

City of London Environmentally Significant Areas – 2014 / 2015 Projects

*Environmental and
Ecological Planning
Advisory Committee
October 23, 2014*



London
CANADA

City of London ESAs

■ Presentation Overview

- Management of ESAs in London
- Summary of 2014 Accomplishments
- Summary of 2015 Projects
 - Master Plans & Other Studies
 - Invasive Species Management
 - Trail / Signage Work
 - Adopt an ESA
- Questions

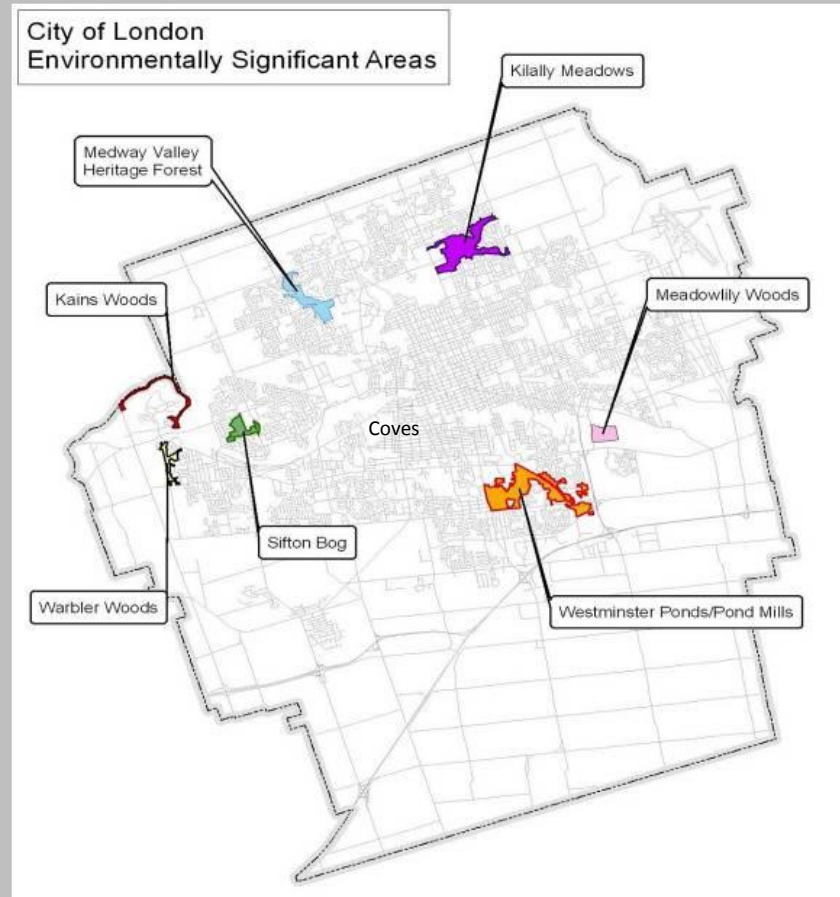


Nathaniel Bergman PhD Candidate & EEPAC Member
Buckthorn Busting in Medway ESA - Adopt an ESA Program

City of London ESAs

Managed ESAs in London

- Westminster Ponds (204 h)
- Sifton Bog (40 h)
- Warbler Woods (29 h)
- Kains Woods (25 h)
- Kilally Meadows (132 h)
- Meadowlily Woods (44 + 14h)
- Medway VHF (95 + 34h)
- Coves ESA (46 ha)



UTRCA manages publically owned ESA land

City of London ESAs

■ ESA Team

- 7 ESAs are managed by the UTRCA under agreement with the City
- ESA Team have unique skills:
 - Wildlife management
 - Professional foresters/arborists
 - Tree Risk Assessor Qualification
 - Carpentry
 - Municipal By-law Enforcement
- Yearly Operating Budget
- Yearly Capital Budget



Project Planning in ESAs

■ Conservation Master Plans

- Goals, Objectives, Recommendations
- Phase I and Phase II Process

- Sifton Bog 2009
- Westminster Ponds 2005 & 2014
- Kilally Meadows 1999
- Medway Valley HF 1996
- Meadowlily Woods 1989
- Coves 2014
- Update to Medway VHF 2015 est.
- Update to Meadowlily Woods 2015 est.



Conservation Master Plan for the Coves ESA

Prepared for the City of London Parks Planning & Design

October 2014

North-South Environmental Inc.
 35 Crawford Crescent, Suite U5
P.O. Box 518
Campbellville, Ontario
L0P 1B0

Overview of 2014 Capital Projects in ESAs

■ Master Plans & Other Studies

- The Coves Phase 2 Conservation Master Plan
- Meadowlily Woods Phase 1 Conservation Master Plan
- Medway Valley Heritage Forest Phase 1 Conservation Master Plan
- Westminster Ponds / Pond Mills Inventory, Management Zones & Hydrology
- Sifton Bog Hydrology Monitoring Initiated



Overview of 2014 Capital Projects in ESAs

■ Invasive Species Management

- EAB Tree Injections in all ESAs
- Buckthorn Management at Sifton Bog, Killaly, WMP, Warbler & Meadowlily
- Dog Strangling Vine Management at Kains Woods
- English Ivy & Goutweed at Warbler
- Japanese Knotweed Management at Medway, WMP, Kains & Killaly
- Phragmites Management at Medway
- Medway SAR / Goutweed Management Project



Overview of 2014 Capital Projects in ESAs

Trail Improvements & Signage

- Kains Woods TAG Recommendations
- Killaly Wakefield Access TAG Solution
- All ESAs - NEW Green ESA Signage w QR Codes at most ESA access (55+)
- Bike Racks at ESA accesses
- Medway (north) Boardwalks, Bridge, Trails, Restoration and Turtle Habitat
- Warbler Woods Boardwalk Extensions



Killaly ESA Wakefield Access TAG Solution Warbler Woods Environmentally Significant Area Signage w QR Codes

2014 Stewardship Projects in ESAs

- Adopt an ESA
- 7 Adopt an ESA Groups
- 3 in Medway, 1 in WMP, Coves, Meadowlily, and Killaly
- Buckthorn Busting in Medway (south)
- Sweet White Clover Pull in Medway (north)



2015 Proposed Capital Projects in ESAs

- **Master Plans and Studies**
 - Medway (south) Phase II CMP
 - Meadowlily Phase II CMP
 - Sifton Bog Terrestrial Study



Sifton Bog - *Calopogon tuberosus*
Photo David Wake

2015 Projects in ESAs

■ Invasive Species Management / Restoration

- Coves – Buckthorn, Knotweed
- WMP – Buckthorn Project & Loosetrife Beetle Project
- Killaly - Dog Strangling Vine
- Sifton Bog - Buckthorn
- Medway (north) - Buckthorn & Phragmites
- Medway (south) - SAR/Goutweed/Knotweed Project & Phragmites
- Warbler – Buckthorn, English Ivy & Barberry
- Meadowlily & Kains - Monitor using EDRR approach



Goutweed Control w Herbicide



Medway VHF ESA False Rue-anemone (Species at Risk)


2015 Proposed Projects in ESAs

Trail Work

- Coves – Priority Items as per CMP
- Westminster Ponds - Trail review based on Management Zones for 2015/2016 implementation
- Westminster Ponds - Community Connections Project & Recommendation # 62 CN Crossing
- Kains - re-alignment and Sifton easement
- Sifton Bog - Trail review based on Management Zones for 2015/2016 implementation
- All ESAs – Continue un-official trail closures w Warbler as a priority

City of London
Parks Planning and Design Manual of Design Specifications


**PLANNING AND DESIGN STANDARDS
FOR TRAILS IN
ENVIRONMENTALLY SIGNIFICANT AREAS**



Granular pedestrian trail through an old field / savannah habitat in Killaly Meadows ESA

June 4, 2012

Prepared by:
Parks Planning and Design, Planning Division
with Schollen & Company Inc. and
North-South Environmental



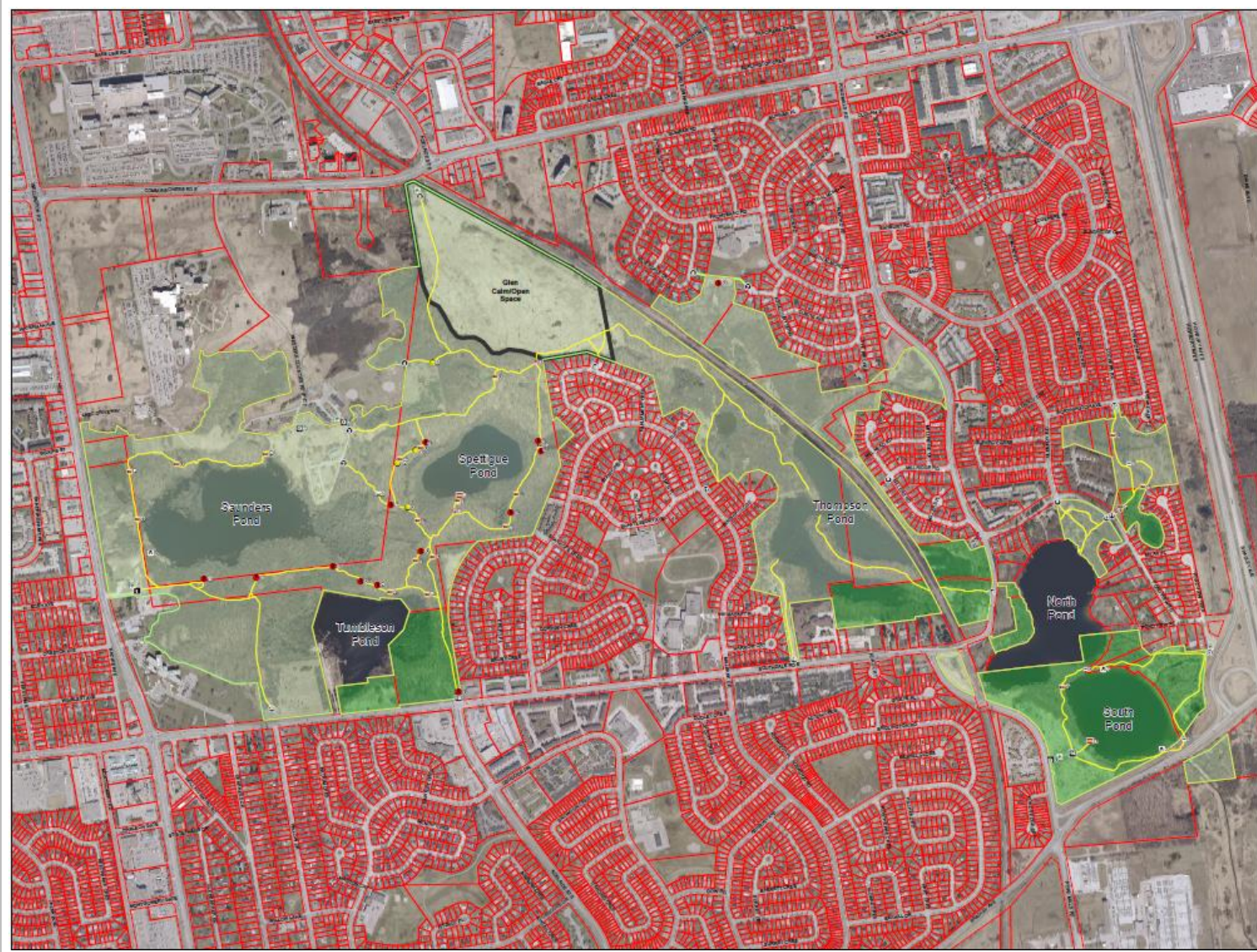
2014 / 2015 Projects in ESAs

■ Anticipated ESA Meetings Oct. 2014 - March 2015

- Coves ESA – Phase II Planning and Env. Committee – **November 4, 2014**
- Medway VHF CMP Phase I to Planning and Env. Committee - January 2015
- Medway VHF CMP Phase II Start-up - Winter 2015
- Medway VHF CMP Phase II Local Advisory Committee (LAC) - Spring 2015
- Meadowlily Woods CMP – Phase I Summary – Nov./Dec. 2014
- Meadowlily Woods CMP Phase II Start-up - Winter 2015
- Meadowlily Woods CMP Phase II Local Advisory Committee (LAC) - Spring 2015



Westminster Ponds ESA



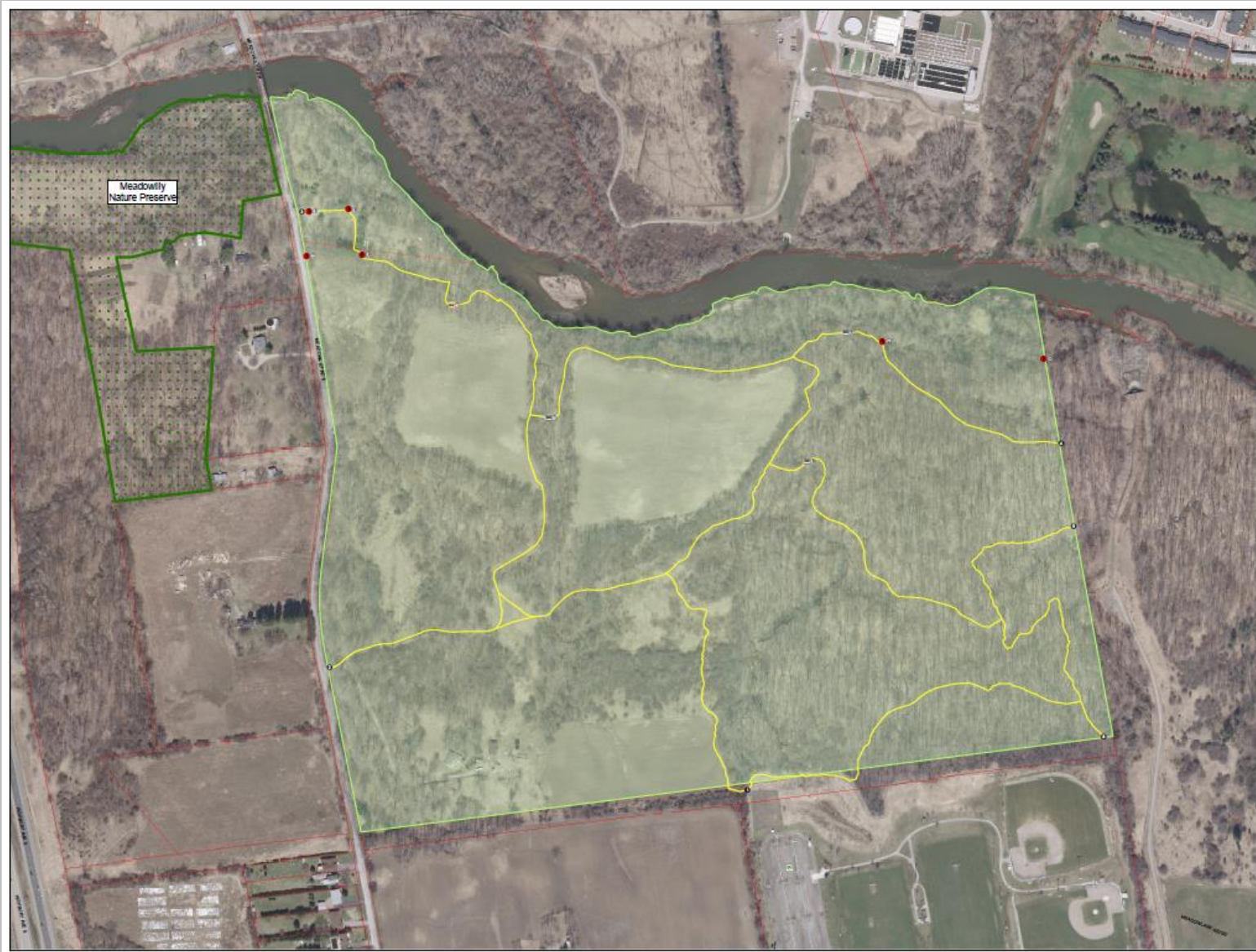
Sifton Bog ESA



Medway Valley Heritage Forest ESA



Meadowlily ESA



Kilally Meadows ESA



Warbler Woods ESA



Kains ESA

