

Richmond to Adelaide TVP, MCEA

ENVIRONMENTAL & PARKS PLANNING SECTION

EEPAC Meeting October 23, 2014



London
CANADA

Richmond to Adelaide TVP - MCEA

- Presentation Objective:

Inform EEPAC members of the Richmond to Adelaide Thames Valley Parkway MCEA which is just getting started.

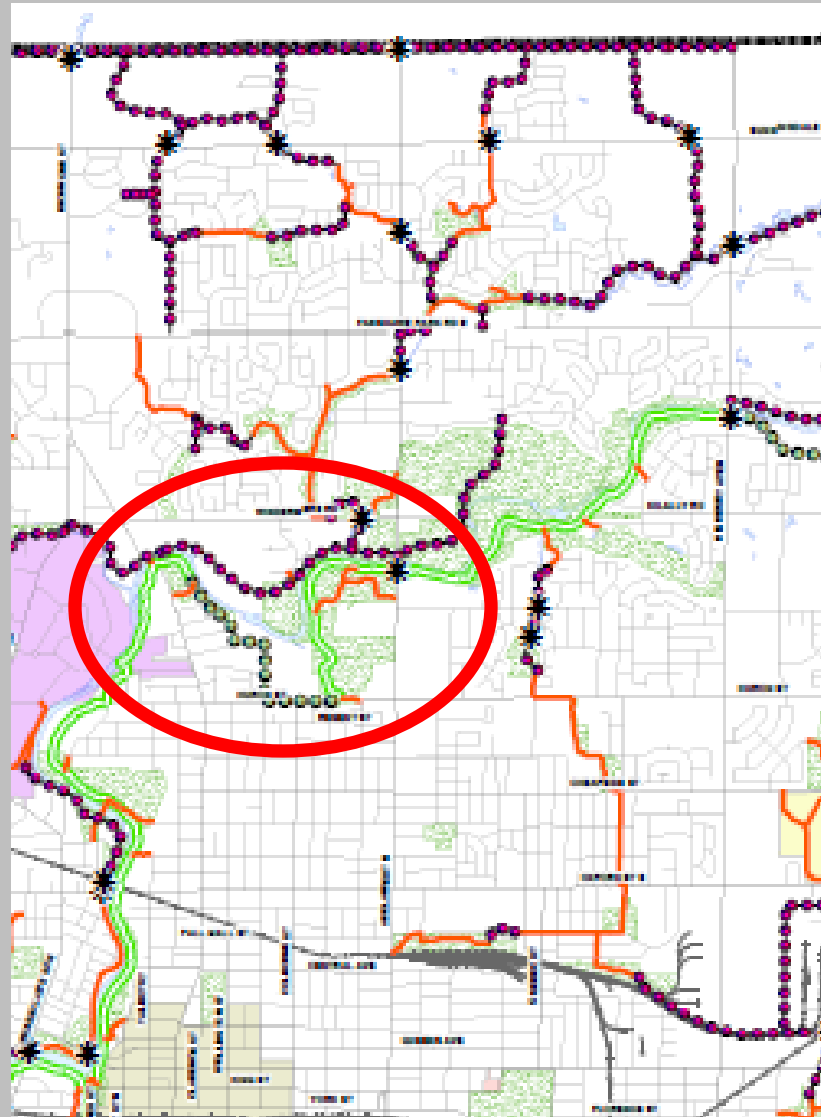
Discuss the planning process and opportunities for input into this project.



Richmond to Adelaide TVP - MCEA

■ Planning Context:

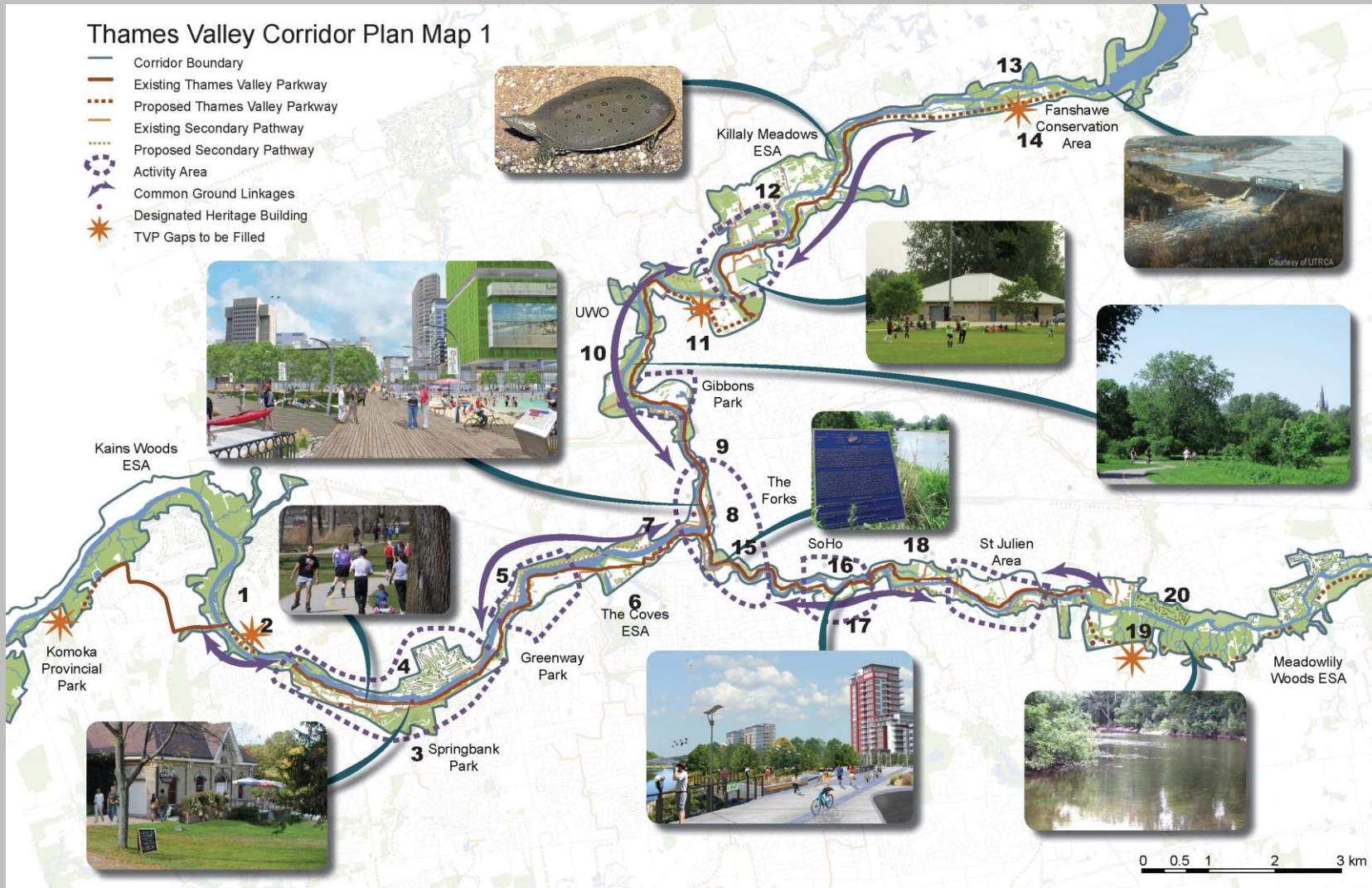
- Official Plan, Section 15.3.3
 - Chapter 8 & 16 – Open space, Parks & Recreation policies
 - Chapter 15 – Environmental policies
- Parks & Recreation Master Plan
 - Expand and improve access to the City's pathway system
 - Improve accessibility along the pathway system
- Bicycle Master Plan
 - Provides planning context for all cycling infrastructure
 - Complete gaps in the primary & secondary pathway system
- Strengthening Neighbourhoods Strategy
 - Encourage biking & walking as a means of transportation
 - Improve connectivity between neighbourhoods
- Age Friendly London Action Plan
 - Increase the walkability and safety of pathways and improve neighbourhood connections to the pathway system
- Smart Moves 2030 Master Plan
 - Investing in Active transportation, including cycling and walking infrastructure is a key priority for the City
- Thames Valley Corridor Plan
 - 61 recommendations that range from environmental initiatives to pathway development with a focus on completing gaps in the TVP



Richmond to Adelaide TVP - MCEA

Thames Valley Corridor Plan Map 1

-  Corridor Boundary
-  Existing Thames Valley Parkway
-  Proposed Thames Valley Parkway
-  Existing Secondary Pathway
-  Proposed Secondary Pathway
-  Activity Area
-  Common Ground Linkages
-  Designated Heritage Building
-  TVP Gaps to be Filled

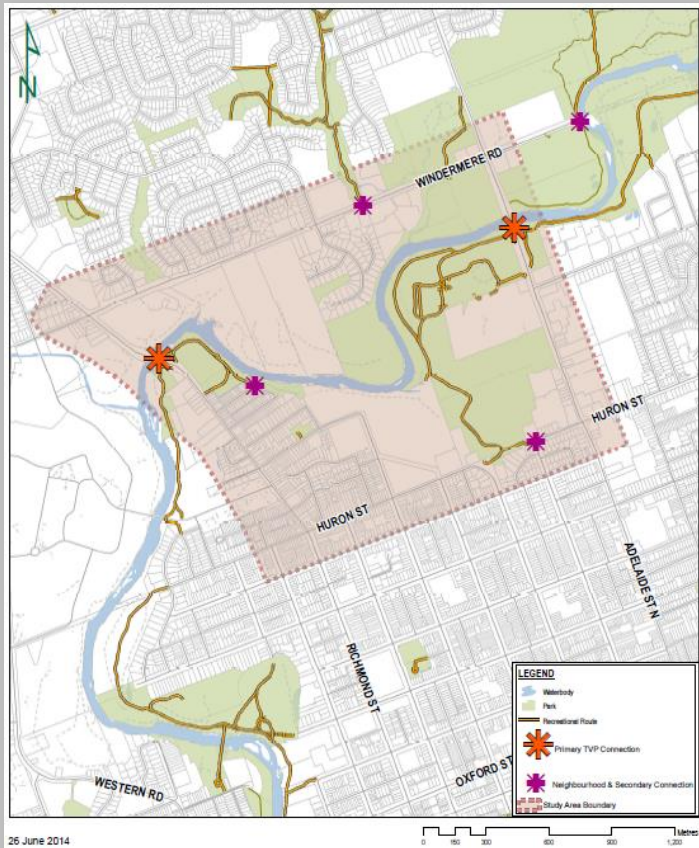


0 0.5 1 2 3 km

Richmond to Adelaide TVP - MCEA

■ Study Context

- Numerous studies confirm the need to complete gaps in the TVP.
- Richmond to Adelaide = highest priority.



■ Study Overview

- Project Manager: Jeff Bruin
- Consultant: Dillon Consulting Ltd.
- Study Type: Schedule 'C' MCEA
- Started: September 2014
- Anticipated Completion: November 2015
- Status: Preparing for PIC #1 & formal notifications. Ecological inventories progressing.

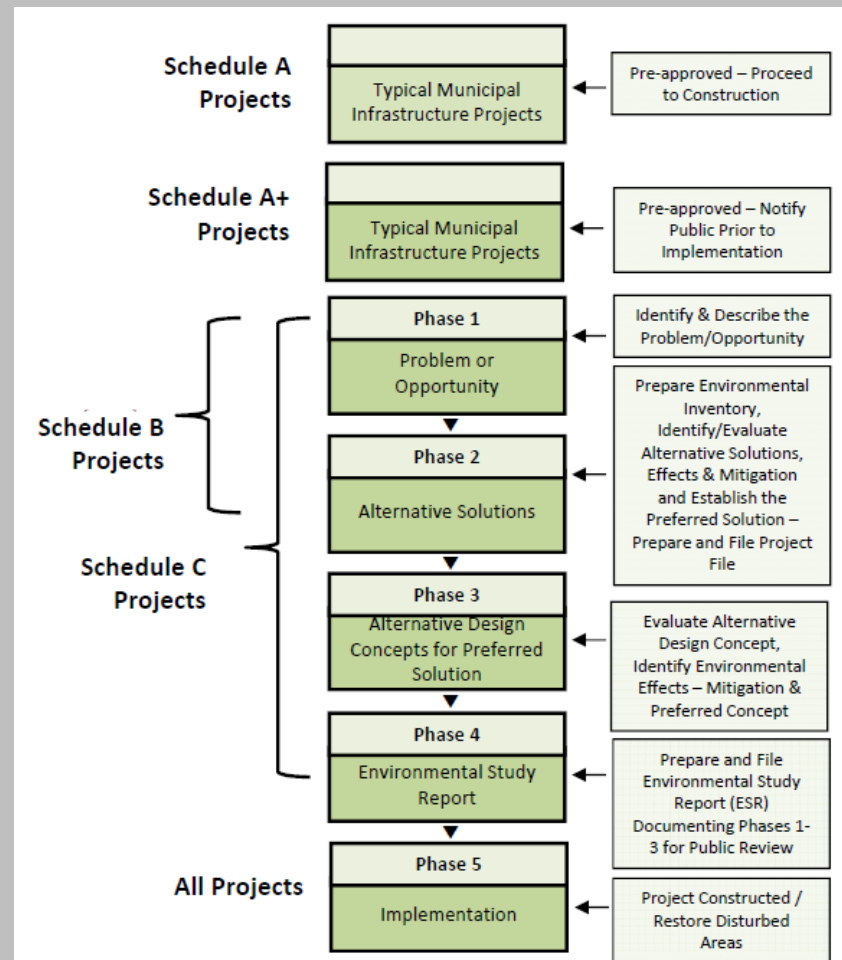
■ Study Objective

- Identify the preferred alignment for the Thames Valley Parkway (primary pathway system) between Richmond Street and Adelaide Street North, as well as secondary pathway connections to surrounding neighbourhoods.

Richmond to Adelaide TVP - MCEA

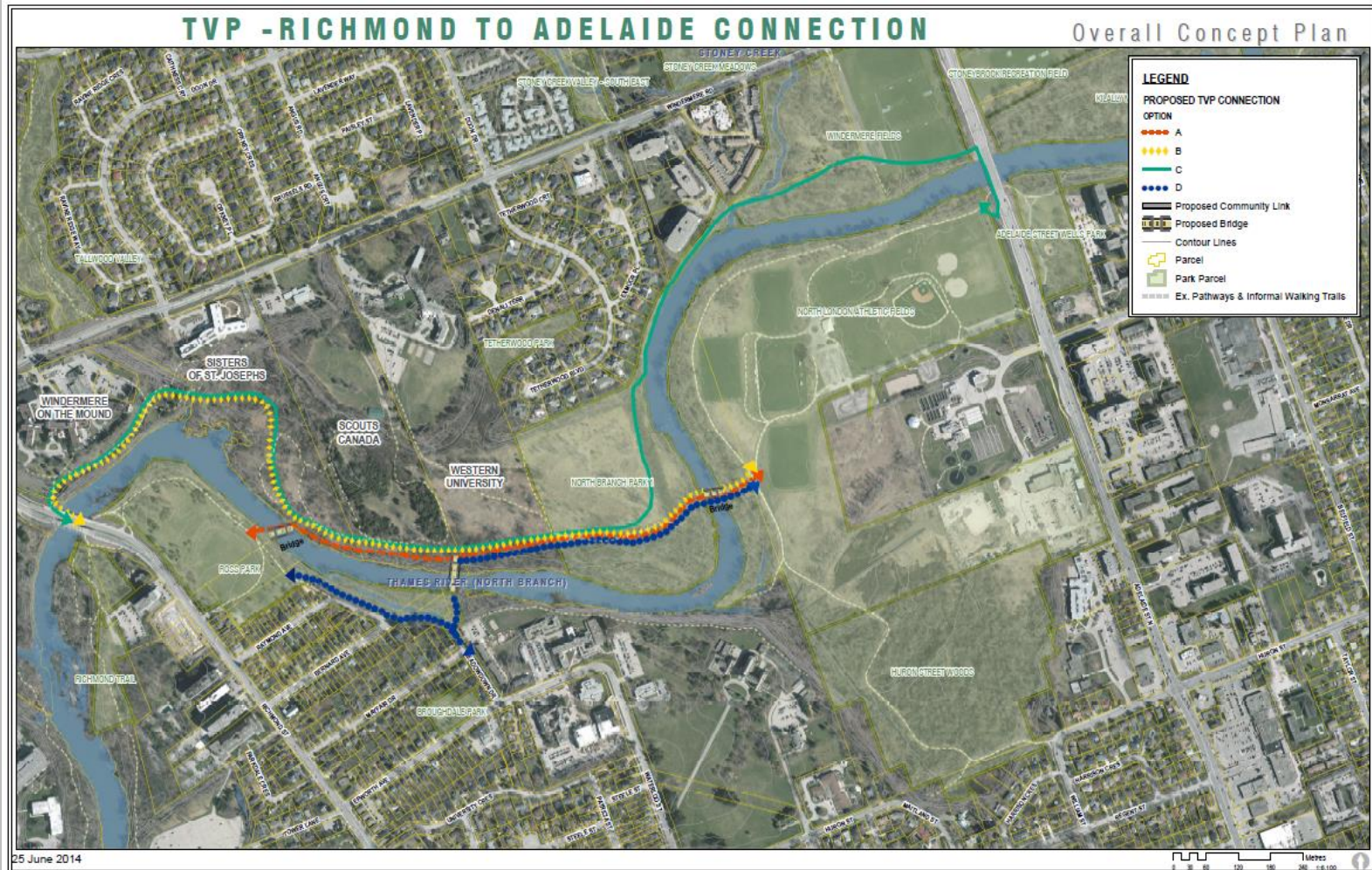
■ What is a MCEA:

- The Class EA process is a five phase planning process which:
 - Identifies **reasonable solutions** to the problem;
 - Considers **advantages and disadvantages** including net environmental effects;
 - Requires **public consultation**; and
 - Provides **clear documentation** that describes the decision making process
- Phase 1: problem or opportunity
- Phase 2: alternative solutions
- Phase 3: alternative design concepts for preferred solution
- Phase 4: environmental study report
- Phase 5: implementation



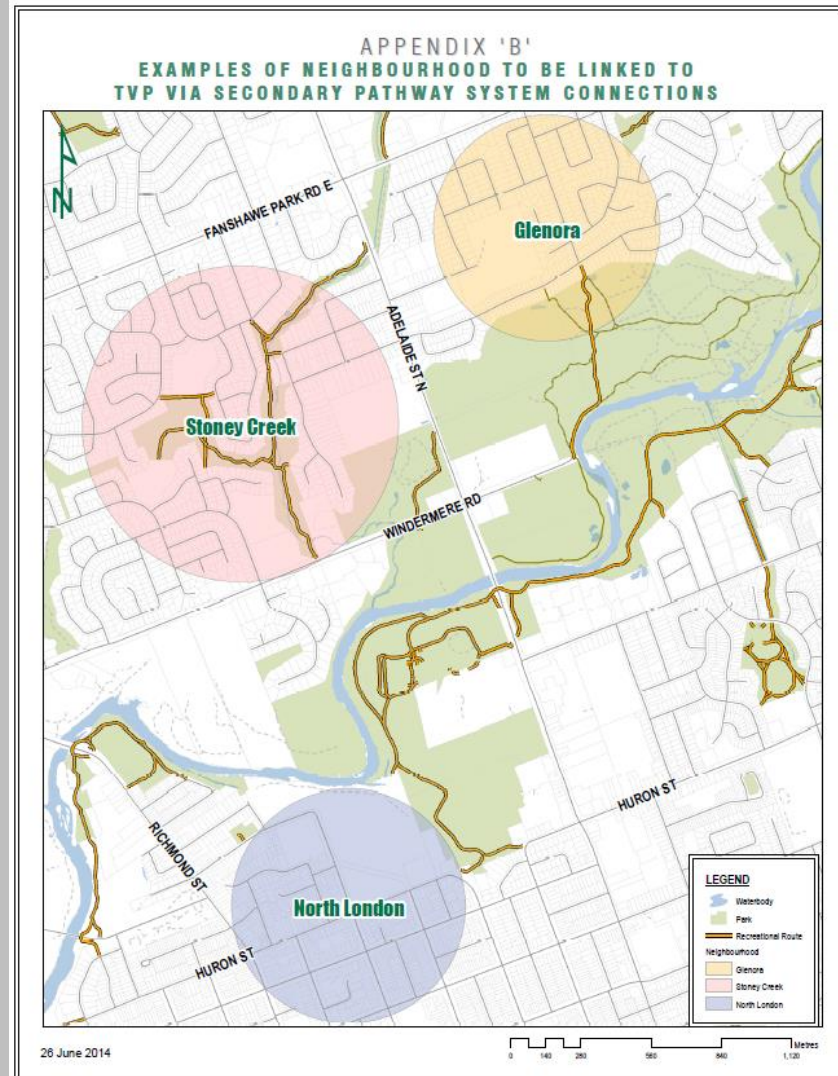
Richmond to Adelaide TVP - MCEA

- Draft TVP (primary pathway) Options to be Assessed



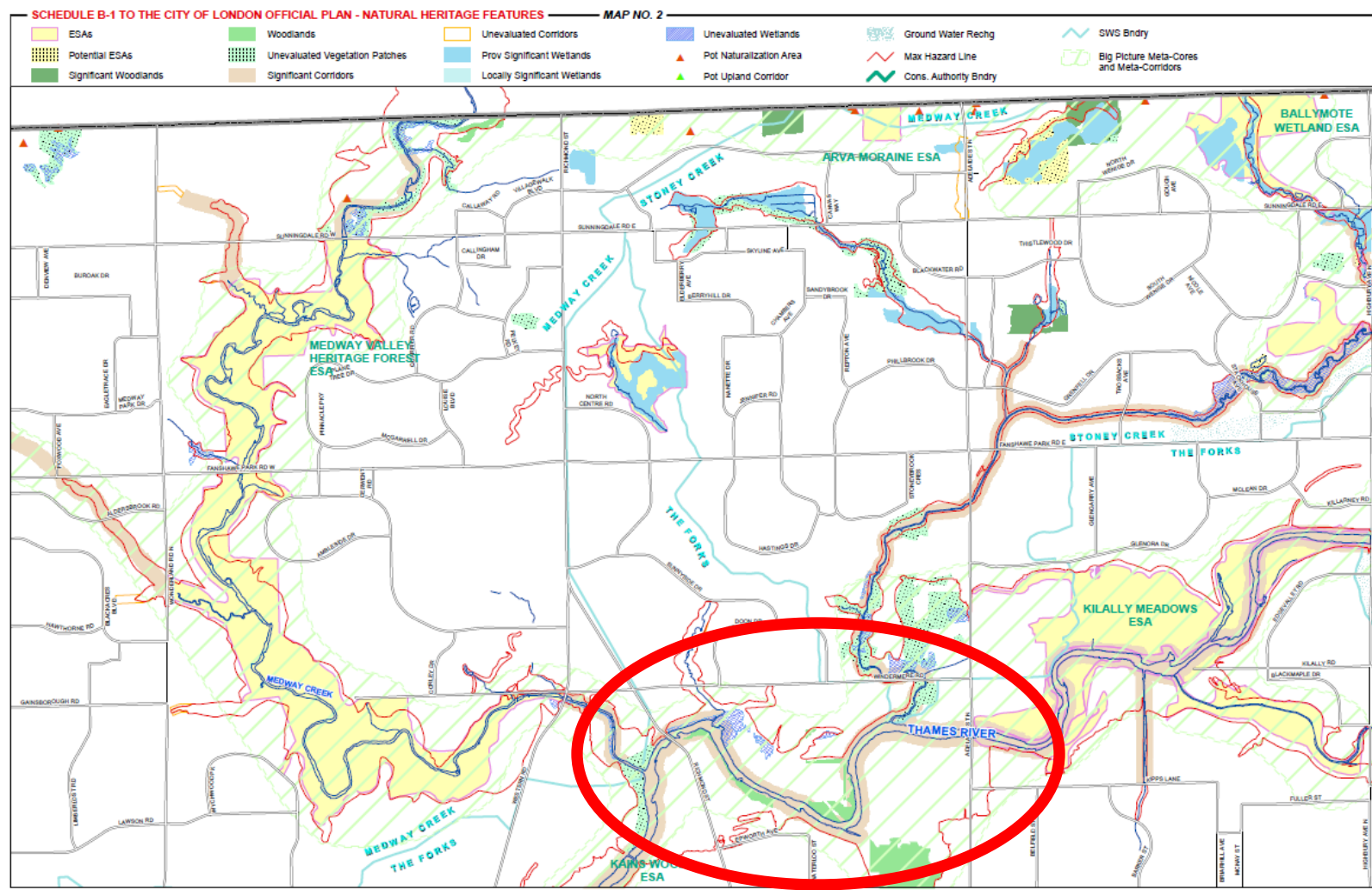
Richmond to Adelaide TVP - MCEA

- Neighbourhood Linkage Options to be developed & Assessed
- Stoney Creek/Masonville neighbourhood
- Glenora neighbourhood
- North London neighbourhood



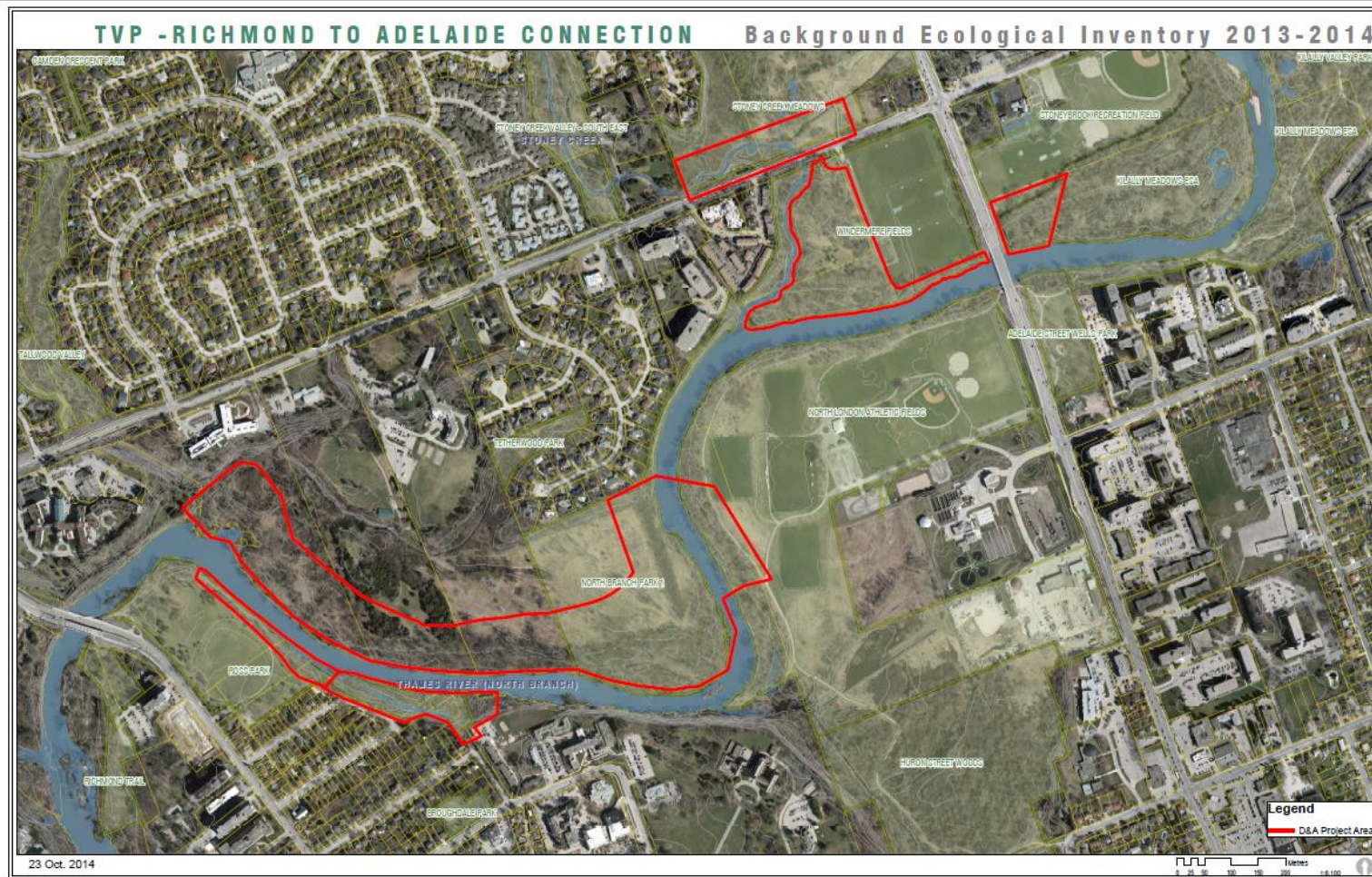
Richmond to Adelaide TVP - MCEA

Official Plan, Schedule 'B-1'



Richmond to Adelaide TVP - MCEA

- Background Ecological Inventory Completed 2013/2014
- Subject lands status report and EIS will be completed as per Section 15.3.3 of the OP.



Richmond to Adelaide TVP - MCEA

■ Summary

- Richmond to Adelaide Thames Valley Parkway, MCEA study is commencing Fall 2014, with an anticipated completion date in Fall 2015. This is a high priority project for the City of London.
- City staff encourage EEPAC members to attend Public Meetings and provide formal comments during this MCEA process.
- Dillon Consulting and City staff will provide EEPAC with the Draft MCEA Screening Report and Draft EIS for formal comment prior to the documents being finalized.

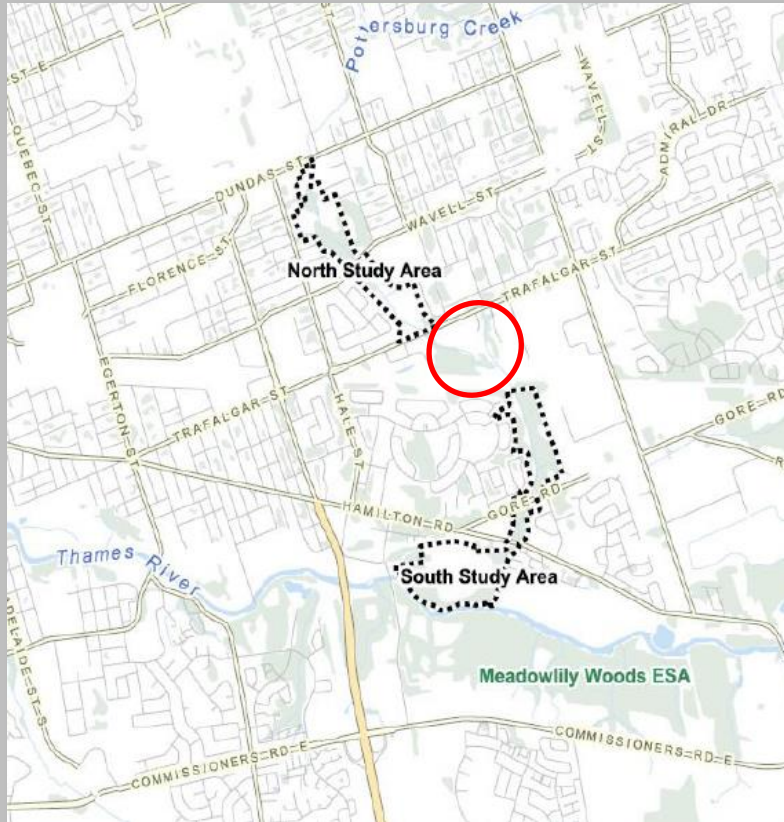


Other Background Information

Kiwanis Park Pathway & CNR Crossing - MCEA

■ Study Context

- 2009: \$1.6M Federal/Provincial funding
- 2009-2012: Constructed 4km of pathway
- Gap: south of Trafalgar at CNR land



■ Study Overview

- Project Manager: Jeff Bruin
- Consultant: AECOM Canada Ltd.
- Study Type: Schedule 'B' MCEA
- Started: July 2013
- Anticipated Completion: Winter 2015
- Status: finalizing comments on draft EA screening report and draft EIS

■ Study Objective

- Confirm the most appropriate way of establishing a recreational pathway connection between Trafalgar Road and Tweedsmuir Avenue, across CNR lands in Kiwanis Park.
- Resolve Transport Canada order to CNR to deter trespassing.

Kiwanis Park Pathway & CNR Crossing - MCEA

■ Study Area & Assessed Options:



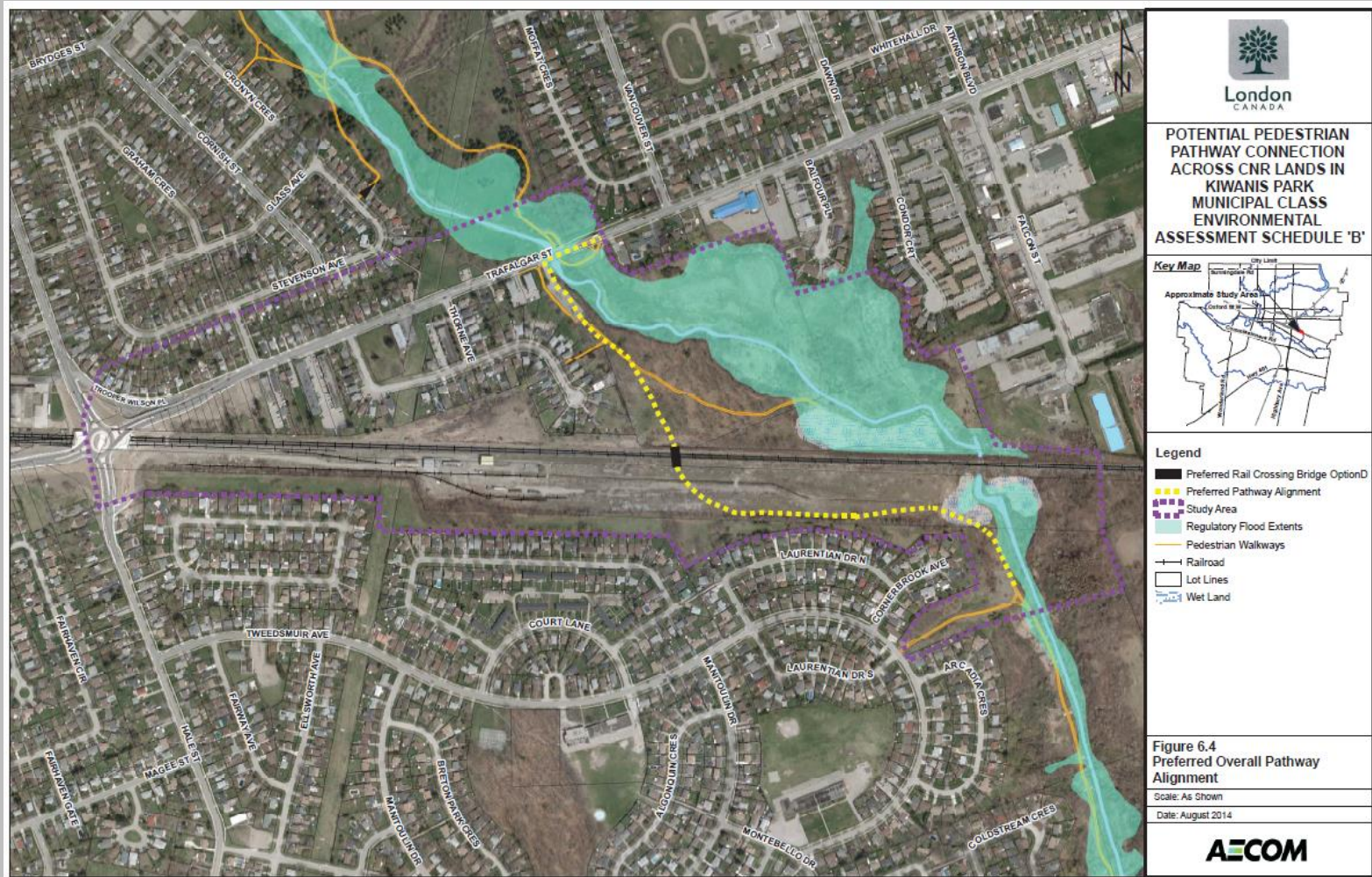
Kiwanis Park Pathway & CNR Crossing - MCEA

- Existing Pathways in Study Area:



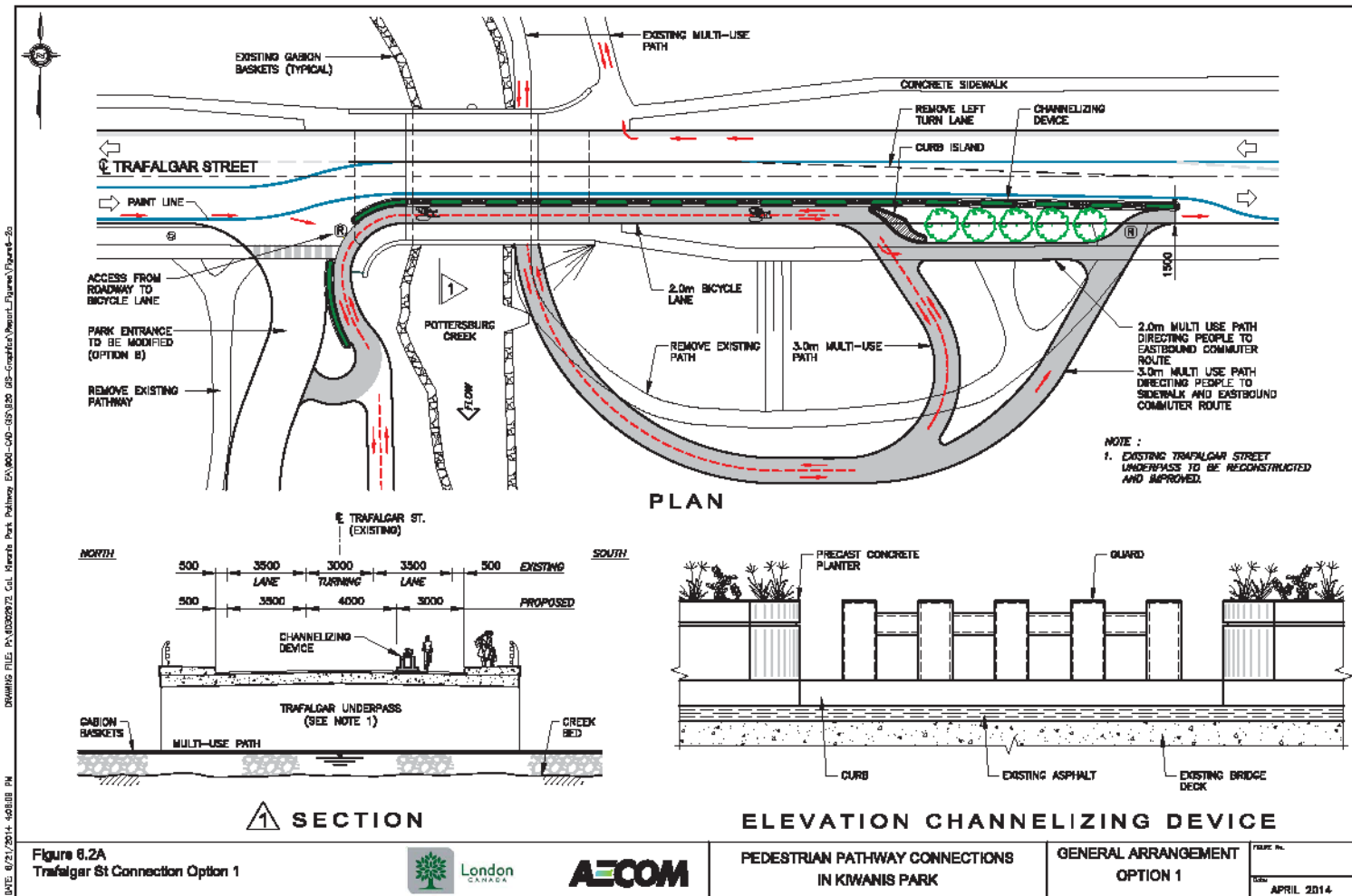
Kiwanis Park Pathway & CNR Crossing - MCEA

- Preferred Alignment...with one exception



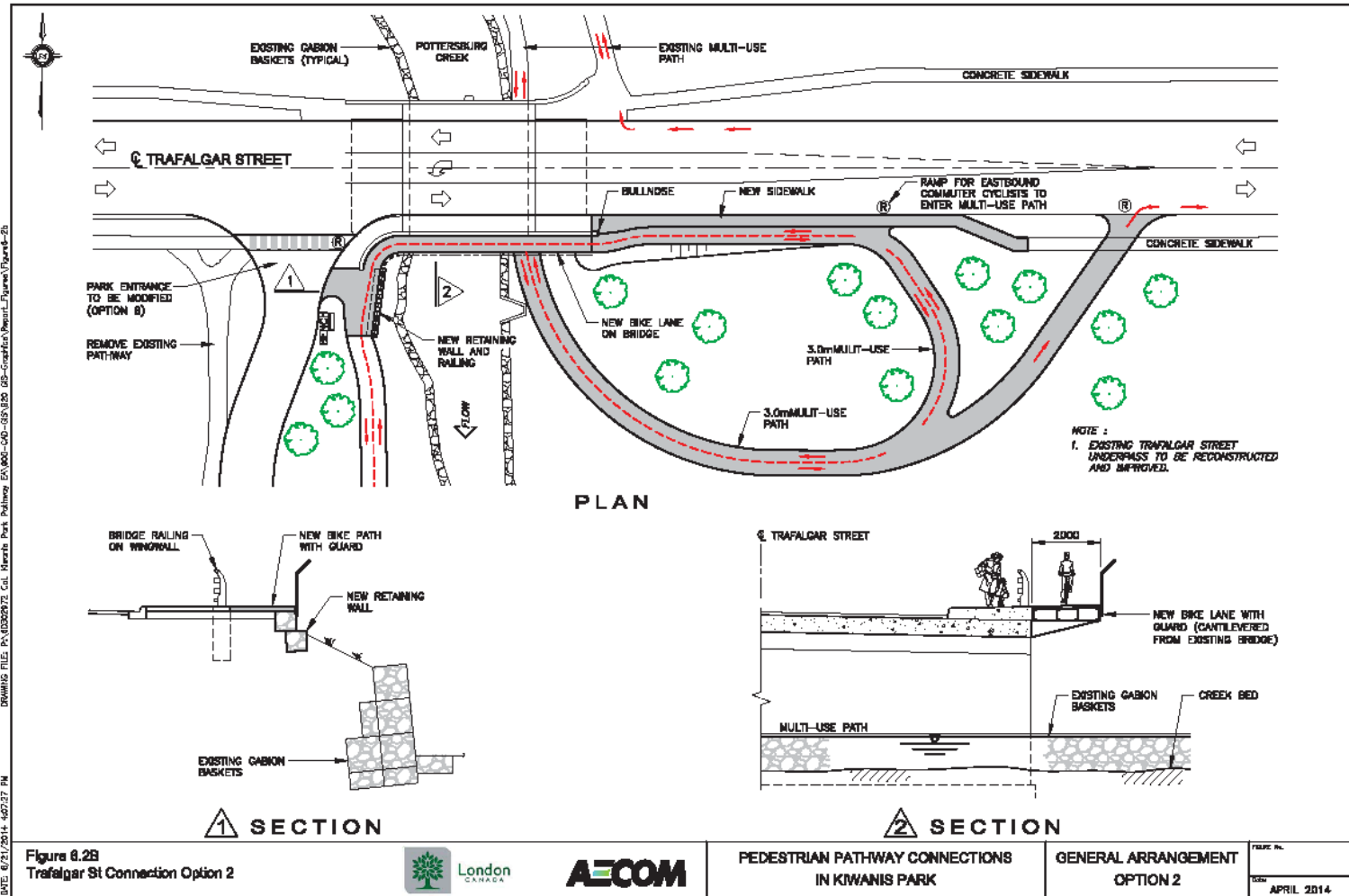
Kiwanis Park Pathway & CNR Crossing - MCEA

Trafalgar Crossing – Option 1



Kiwanis Park Pathway & CNR Crossing - MCEA

Trafalgar Crossing – Option 2



DATE: 6/21/2014 4:02:27 PM DRAWING FILE: P:\1828973_Col_Merits_Park_Pathway_E\1800-00-05\81830_08-Concept\Sheet_Figures\Figure-28



PEDESTRIAN PATHWAY CONNECTIONS
IN KIWANIS PARK

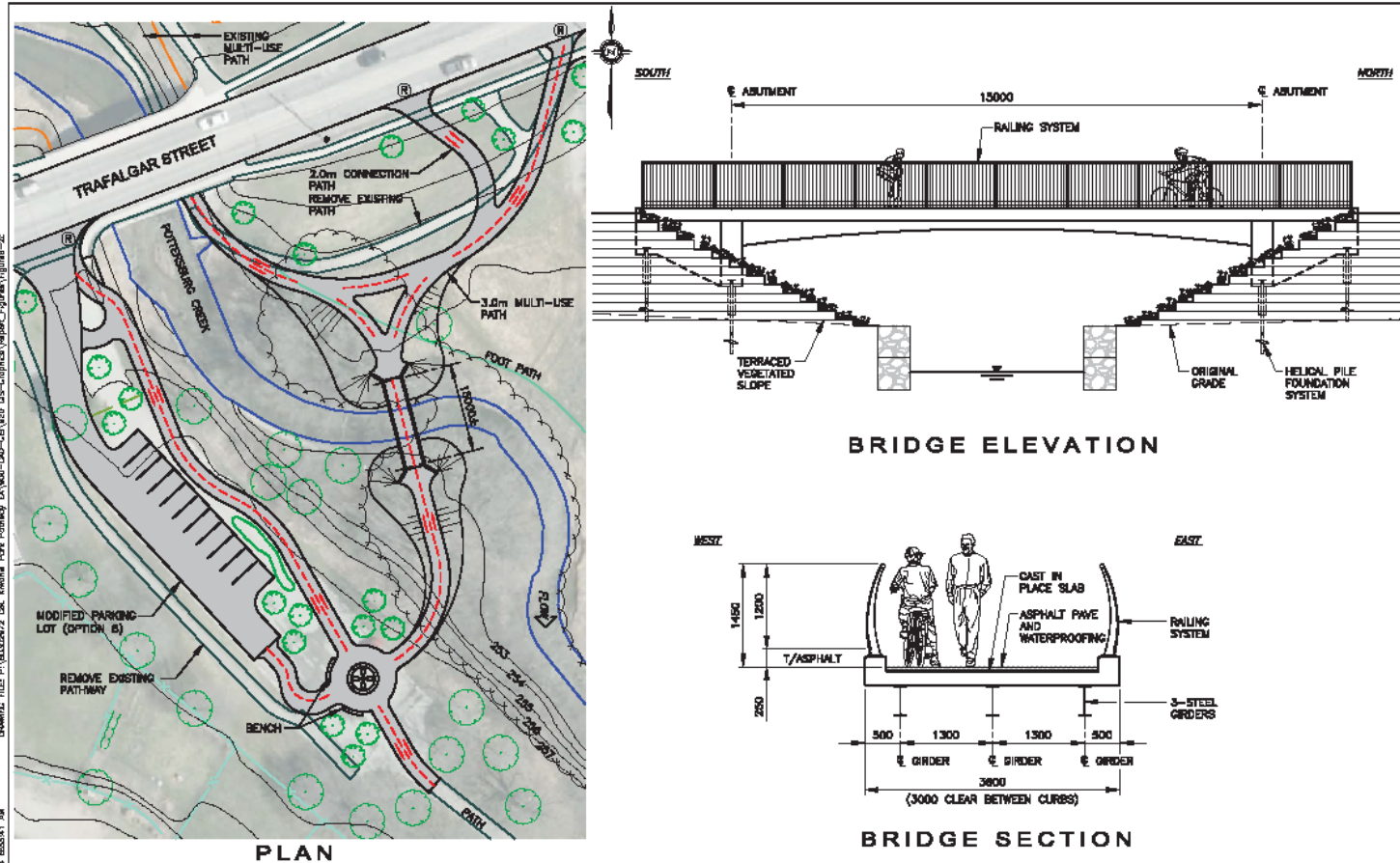
GENERAL ARRANGEMENT
OPTION 2

FIGURE NO.
DATE
APRIL 2014



Kiwanis Park Pathway & CNR Crossing - MCEA

Trafalgar Crossing – Option 3



DRAWING FILE: P:\PROJECTS\2014\Kiwaniis Park Pathway - MCEA\00-CEV\03-DE-Capitol\Drawn_Figures\Figure-2c DATE: 04/27/2014 08:51:41 AM

Figure 6.2C
Trafalgar St Connection Option 3



PEDESTRIAN PATHWAY CONNECTIONS
IN KIWANIS PARK

GENERAL ARRANGEMENT
OPTION 3

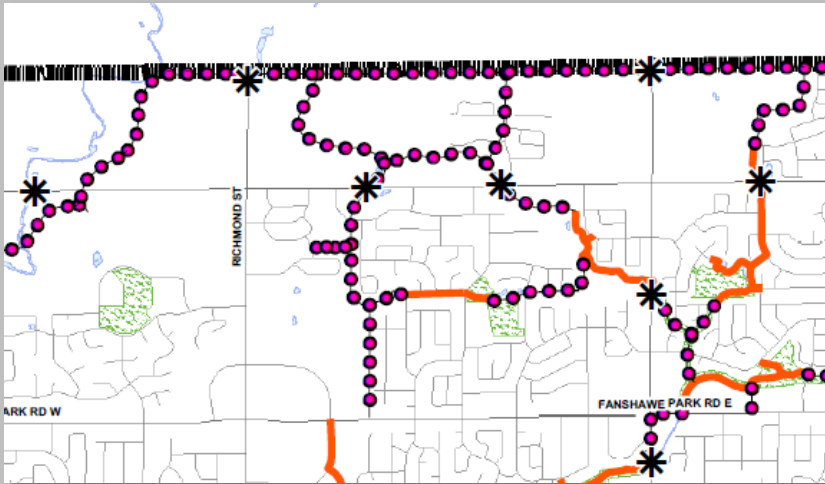
FIGURE NO.
DATE
APRIL 2014



Richmond Street North Pedestrian Crossing - MCEA

■ Study Context

- Ongoing and future subdivision development along City's north boundary
- A Richmond Street North pedestrian crossing is recommended in the Bicycle Master Plan and Sunningdale North Area Plan.



Bicycle Master Plan, 2005

■ Study Overview

- Project Manager: Jane Fullick
- Consultant: AECOM Canada Ltd.
- Study Type: Schedule 'C' MCEA
- Started: June 2014
- Anticipated Completion: June 2015
- Status: Preparing for PIC #1 & formal notifications. Ecological inventories progressing.

■ Study Objective

- Determine the most appropriate means of linking a future recreational pathway system across Richmond Street North.

Richmond Street North Pedestrian Crossing - MCEA

- Study Area & Preliminary Options to be Assessed

