

London's Recreational Pathway System

ENVIRONMENTAL & PARKS PLANNING SECTION

- *Implementing London's Recreational Pathway System*
- *Kiwanis Park Pathway & CNR Crossing – MCEA*
- *Richmond Street North Pedestrian Crossing - MCEA*
- *Richmond to Adelaide TVP – MCEA*

CAC Meeting October 15, 2014



London
CANADA

Implementing London's Recreational Pathway System

■ Presentation Objective:

Provide CAC members with a broad understanding of how London's recreational pathway system is planned for and implemented.

Provide CAC members with status updates on current recreational pathway studies.

- *Kiwanis Park Pathway/CN Crossing, MCEA*
- *Richmond Street Pedestrian Crossing, MCEA*
- *Richmond to Adelaide TVP, MCEA*



Implementing London's Recreational Pathway System

■ E&PP Mandate

- Identify, plan & manage the natural heritage system for the protection of significant features and functions and the enjoyment of all Londoners.
- Plan, design & coordinate implementation throughout London's parks and open space system with the objective of maximizing recreation, healthy living and social opportunities for all Londoners.

■ E&PP Activities

- Contract administration
- Community projects
- Environmental review, management
- Subdivision review processes
- Master plans
- Technical support to other departments

■ City of London Support

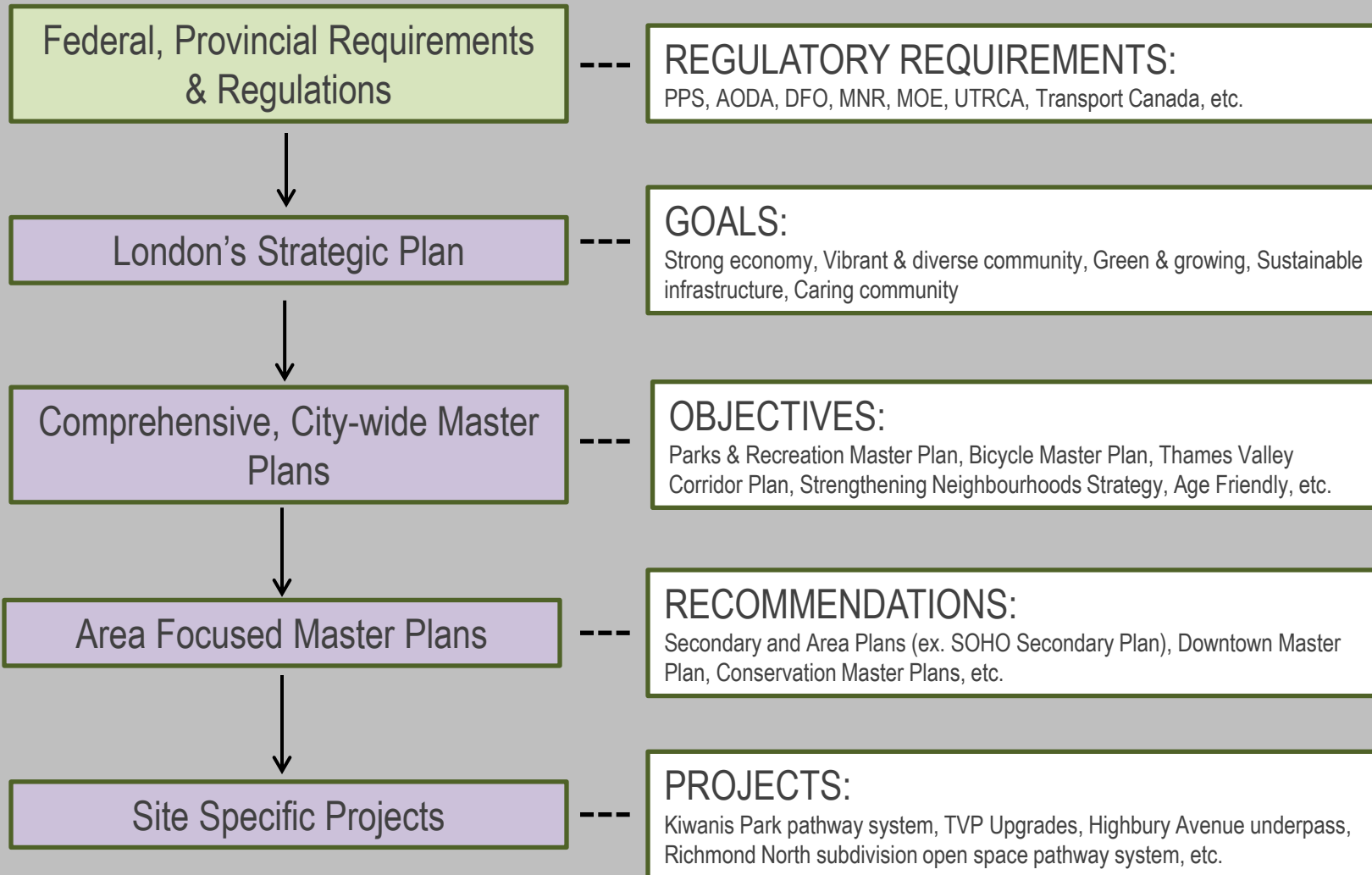
- Transportation Design
- Community Services
- Environmental Programs
- Development Services
- Park Operations
- Others...

■ Interesting Facts

- 430 Parks in London
- 2,600 hectares of park land
- 150km of recreational pathway
- 1800+ people per day on the busiest sections of the Thames Valley Parkway
- 40 capital projects per year
- 80 community projects per year
- \$750k of in-kind funding per year

Implementing London's Recreational Pathway System

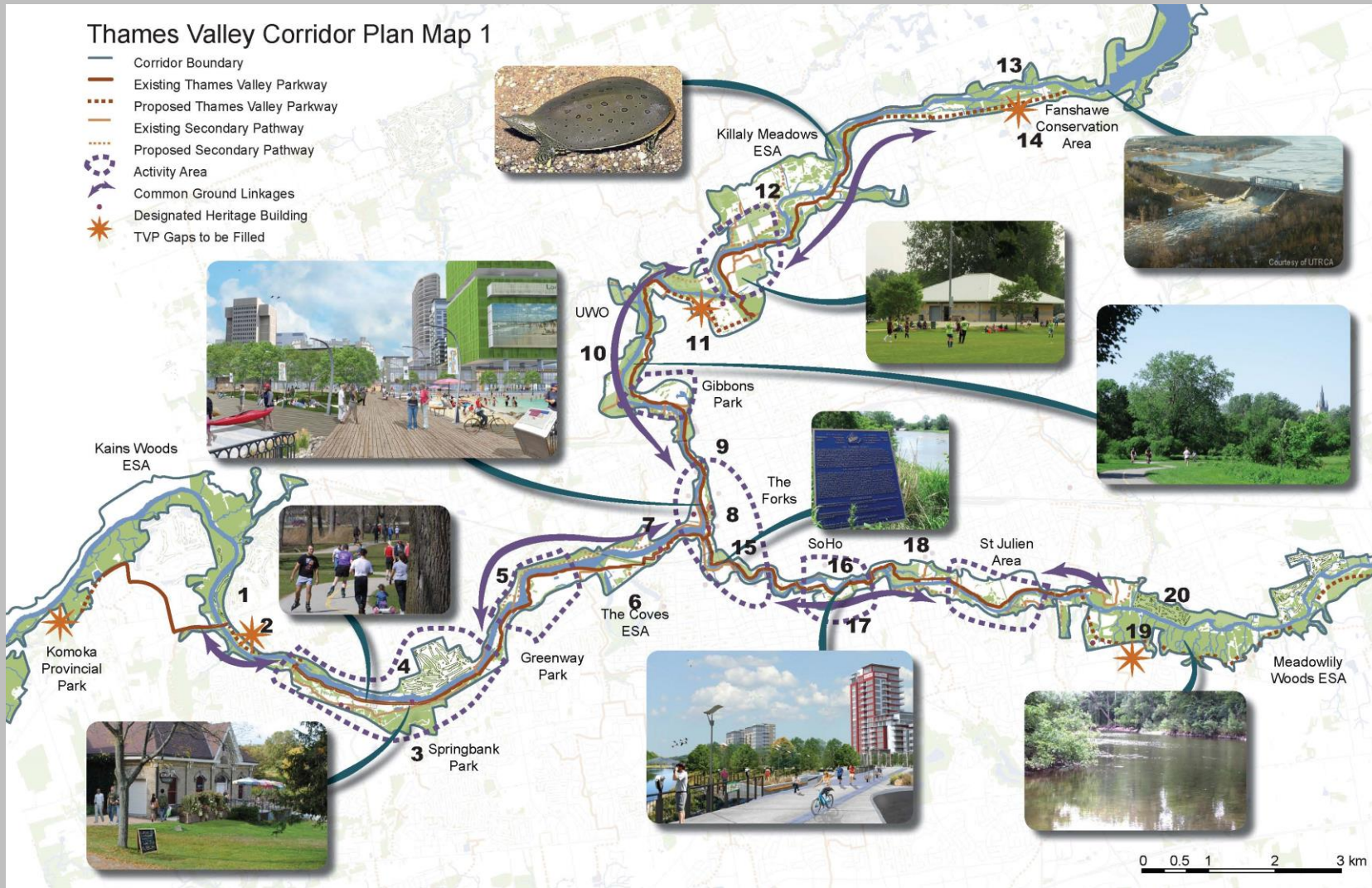
■ Planning Context for all Capital Projects



Implementing London's Recreational Pathway System

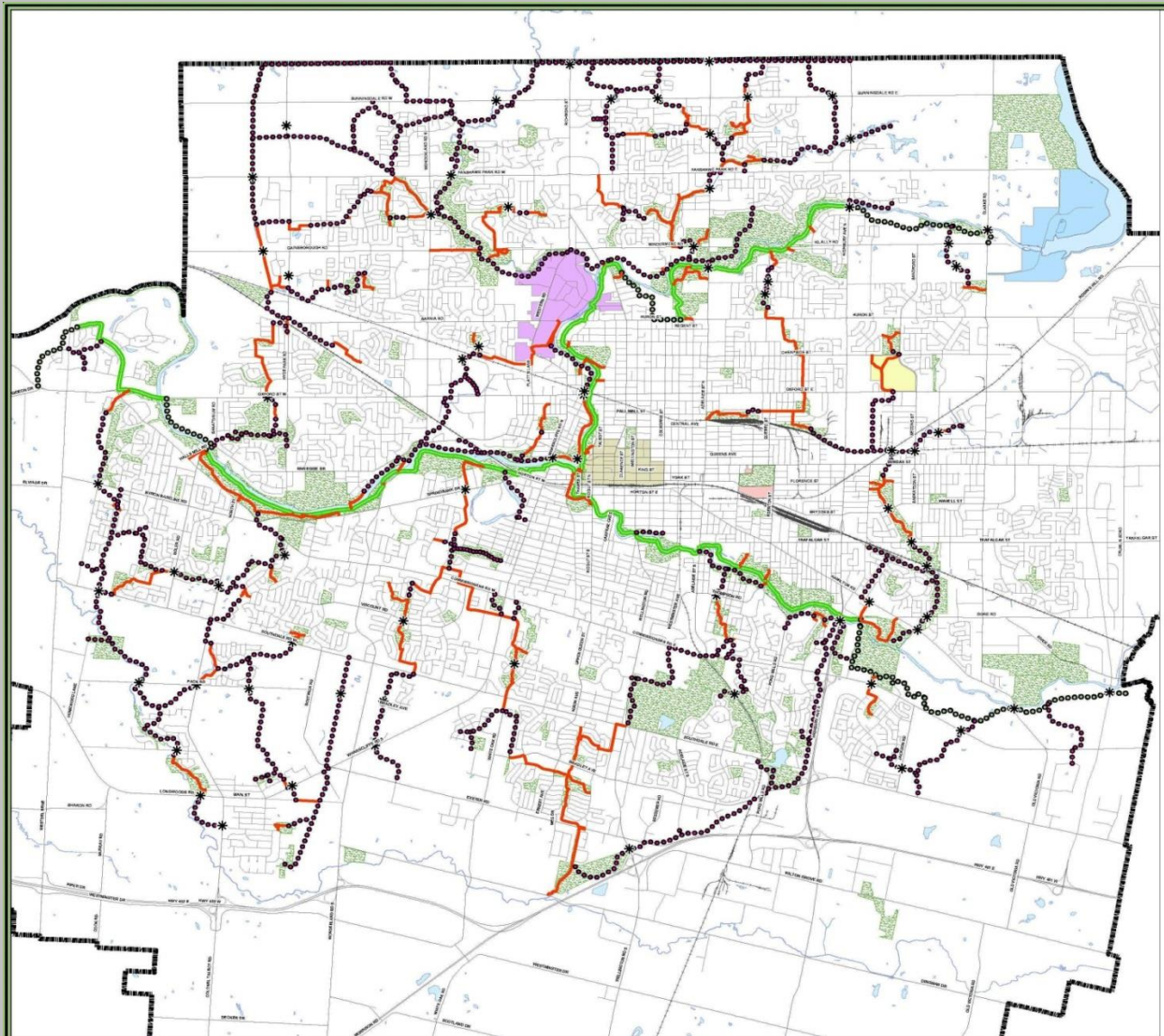
Thames Valley Corridor Plan Map 1

-  Corridor Boundary
-  Existing Thames Valley Parkway
-  Proposed Thames Valley Parkway
-  Existing Secondary Pathway
-  Proposed Secondary Pathway
-  Activity Area
-  Common Ground Linkages
-  Designated Heritage Building
-  TVP Gaps to be Filled



0 0.5 1 2 3 km

Implementing London's Recreational Pathway System



Existing Recreational Bicycle Routes

Legend

- RAILWAYS
- ROADS
- PARKS
- CENTRAL BUSINESS DISTRICT
- WATER
- FANSHAW COLLEGE
- UNIVERSITY OF WESTERN ONTARIO
- U.T.R.C.A.
- WESTERN FAIR

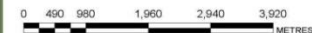
Bike Paths

- THAMES VALLEY PARKWAY (TVP)
- PROPOSED PRIMARY RECREATIONAL ROUTE (alignment conceptual)
- EXISTING SECONDARY RECREATIONAL ROUTE (built, not signed)
- PROPOSED SECONDARY RECREATIONAL ROUTE (alignment conceptual)
- * BIKE PATHS CROSSING MAJOR ROAD

This Schedule forms part of the Bicycle Master Plan and is not intended to depict existing on or off-road bicycle routes. This Schedule is intended to depict proposed cycling infrastructure, and alternative alignments to those illustrated on this map may be explored as new information becomes available. Please refer to the City of London Bike Map for existing bicycle routes.



1:25,000



THE CORPORATION OF THE CITY OF LONDON

DEPARTMENT OF
PLANNING AND DEVELOPMENT
PREPARED BY:
GRAPHICS AND
INFORMATION SERVICES

MODIFIED DATE: JUNE 2007

LOCATION: \\city\london\planning\projects
s_bicycle_master_planning\graphics\recreational\cycle_routes.mxd



London
CANADA

Implementing London's Recreational Pathway System

- Planning Department Capital Programs that Contributes to Recreational Pathway Development.

Tax Based Programs	Growth Based Programs (DC Funded)
Maintain Major Open Space System	New Major Open Space System
Maintain Thames Valley Parkway	New Thames Valley Parkway
Maintain District Parks	New District Parks
Maintain Neighbourhood Parks	New Neighbourhood Parks
Maintain Sports Parks	New Sports Parks
Forks Redevelopment	
Springbank Park Redevelopment	

- Projects are forecasted 10-years out in the capital budget.
- Strong coordination between City departments to align capital budgets & overlapping projects.
- Historically, \$2M +/- per year invested into the recreational pathway system.
- 2009 Federal/Provincial Infrastructure grants provided a \$15M investment into London parks.
- Approximately 350 hectares of new park and 8.3km of new TVP anticipated in future growth areas over the next 10 years. This represents a \$40M investment into parks and open space.

Implementing London's Recreational Pathway System

■ Successes:

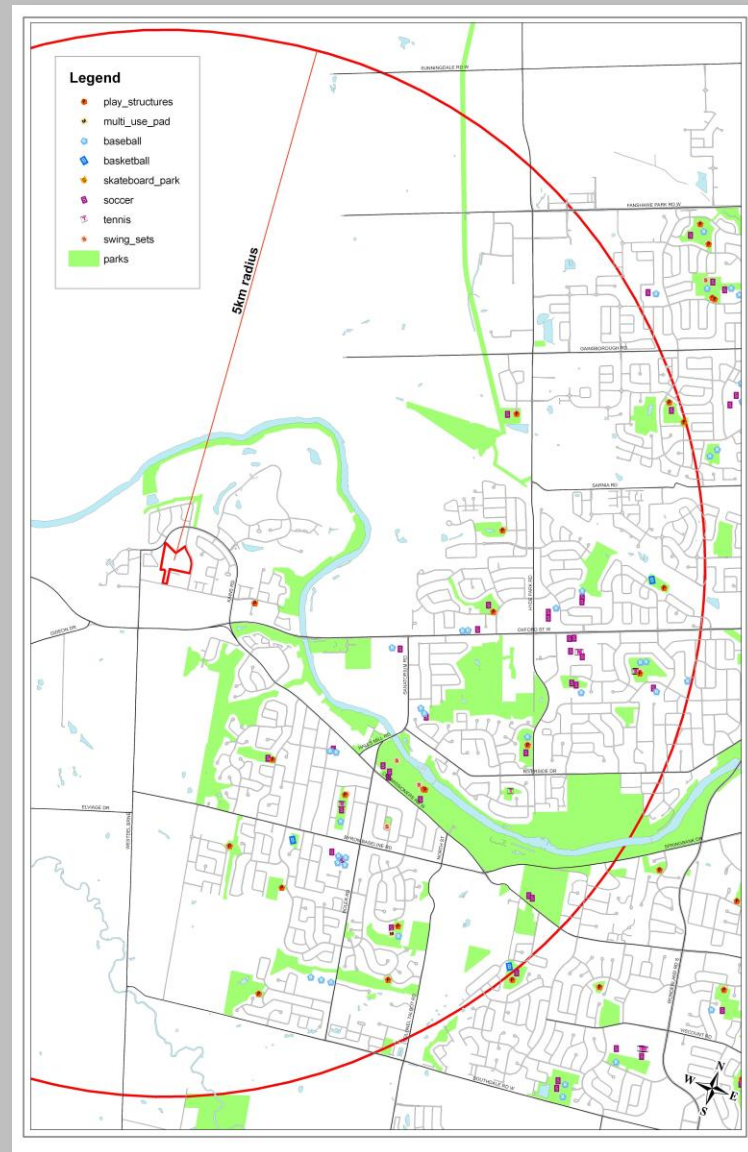
- Strong Public Support for Parks at a City-wide level (ReThink, 2012 community perception survey, etc.).
- Regular inquiries from other Municipalities – London is seen as forward thinking in many of our park related programs.
- Strong relationships with local contractors and developers results in an efficient construction program and productive dialogue surrounding various land acquisition processes.
- High quality projects being delivered under tight budget scenarios.



Implementing London's Recreational Pathway System

■ Challenges:

- Consistent council and community support for master plan goals, objectives and recommendations. Occasional erosion of support at the implementation stage.
- Balancing environmental and social objectives.
- Ensuring operational budgets keep pace with capital investments.



Implementing London's Recreational Pathway System

■ Summary

- The recreational pathway system is very well used and respected by Londoners.
- The planning and implementation associated with the recreational pathway system can be very complex.
- City staff appreciate and look forward to working with CAC on future projects.

■ Opportunities for CAC Involvement

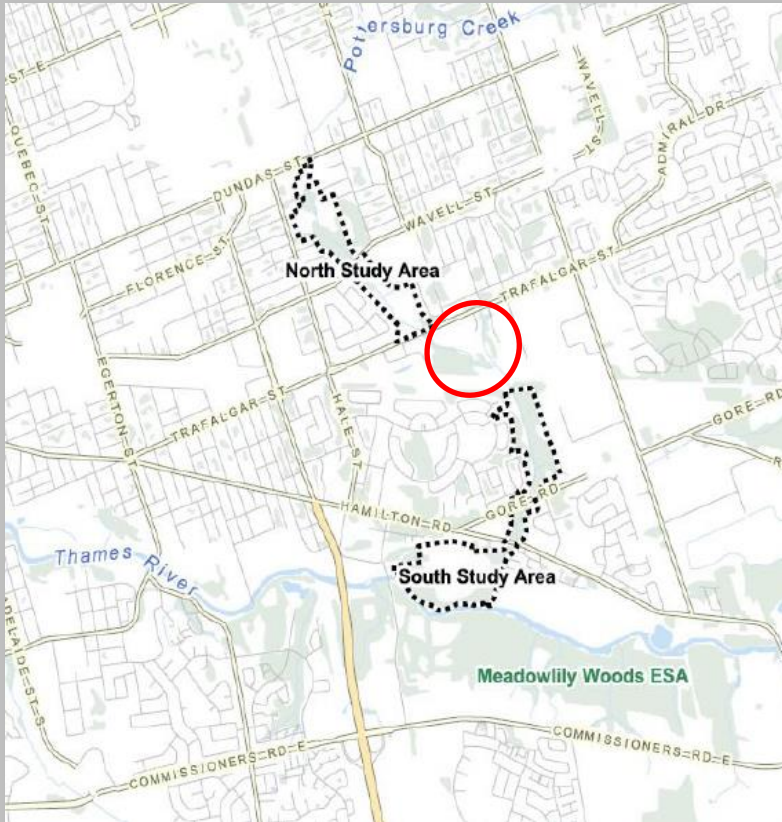
- A strong, unified voice of support for London's recreational pathway system & associated infrastructure.
- Formal input into 'big picture' master plans (ex. Active Transportation Master Plan).
- Formal comments at critical planning stages for priority capital projects.
- Others?



Kiwanis Park Pathway & CNR Crossing - MCEA

■ Study Context

- 2009: \$1.6M Federal/Provincial funding
- 2009-2012: Constructed 4km of pathway
- Gap: south of Trafalgar at CNR land



■ Study Overview

- Project Manager: Jeff Bruin
- Consultant: AECOM Canada Ltd.
- Study Type: Schedule 'B' MCEA
- Started: July 2013
- Anticipated Completion: Winter 2015
- Status: finalizing comments on draft EA screening report and draft EIS

■ Study Objective

- Confirm the most appropriate way of establishing a recreational pathway connection between Trafalgar Road and Tweedsmuir Avenue, across CNR lands in Kiwanis Park.
- Resolve Transport Canada order to CNR to deter trespassing.

Kiwanis Park Pathway & CNR Crossing - MCEA

■ Study Area & Assessed Options:



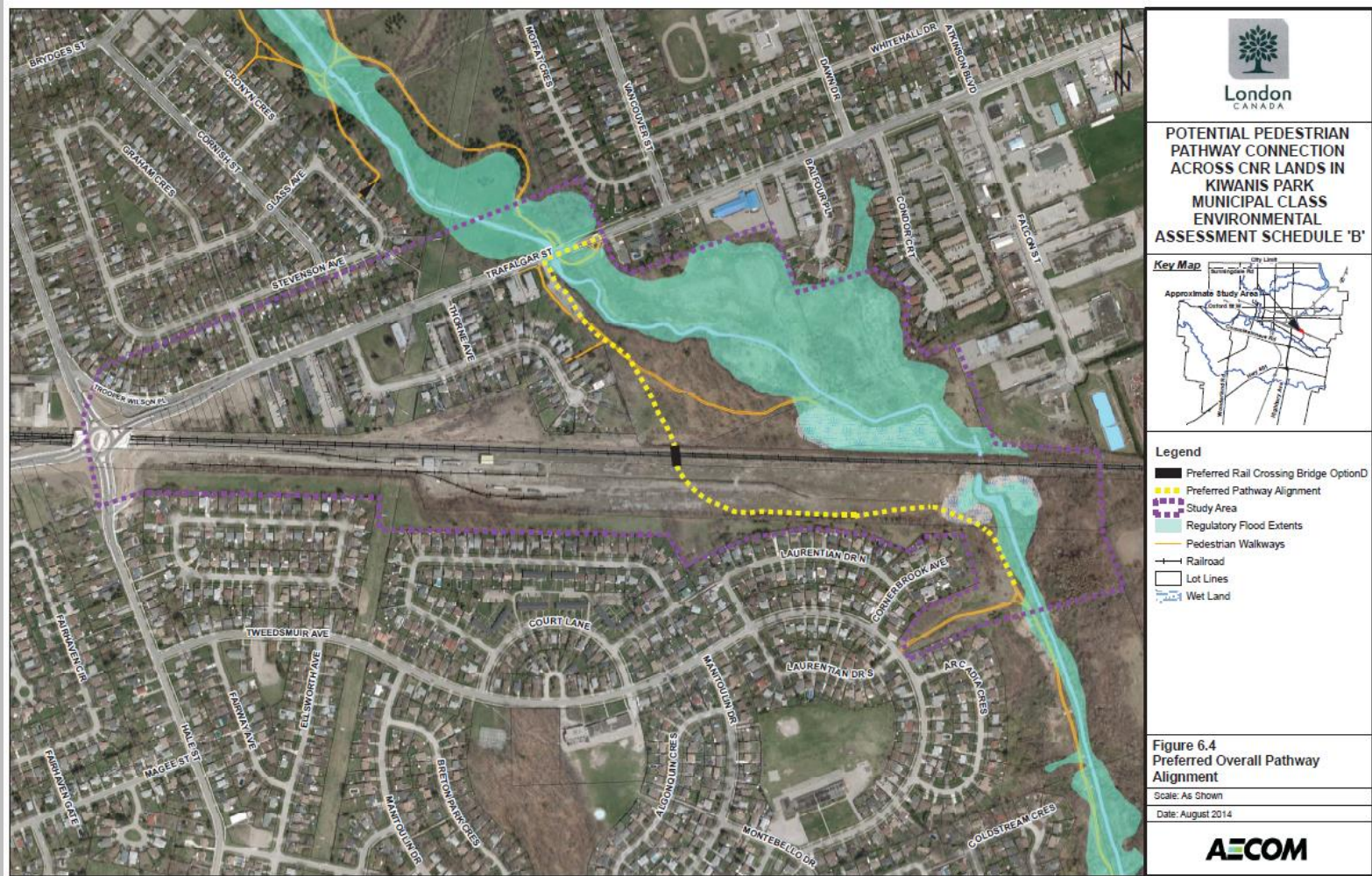
Kiwanis Park Pathway & CNR Crossing - MCEA

- Existing Pathways in Study Area:



Kiwanis Park Pathway & CNR Crossing - MCEA

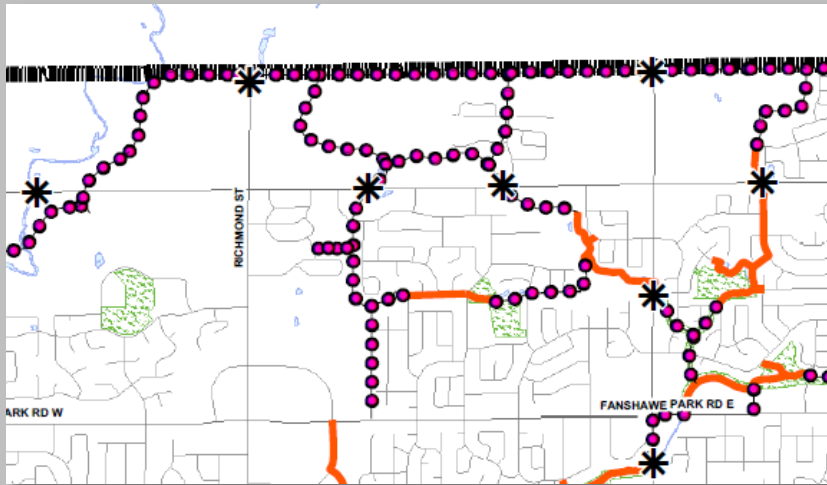
- Preferred Alignment...with one exception



Richmond Street North Pedestrian Crossing - MCEA

■ Study Context

- Ongoing and future subdivision development along City's north boundary
- A Richmond Street North pedestrian crossing is recommended in the Bicycle Master Plan and Sunningdale North Area Plan.



Bicycle Master Plan, 2005

■ Study Overview

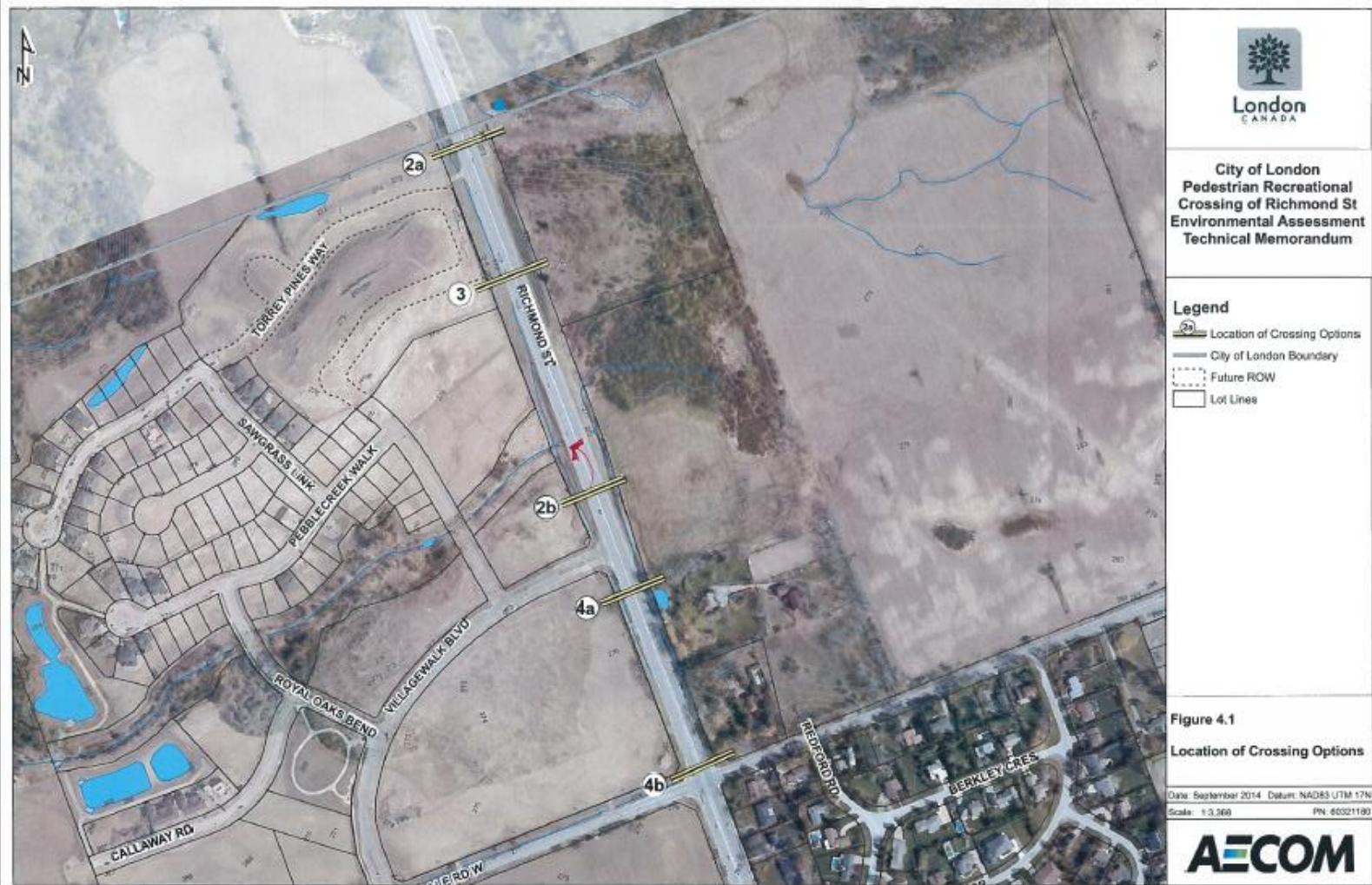
- Project Manager: Jane Fullick
- Consultant: AECOM Canada Ltd.
- Study Type: Schedule 'C' MCEA
- Started: June 2014
- Anticipated Completion: June 2015
- Status: Preparing for PIC #1 & formal notifications. Ecological inventories progressing.

■ Study Objective

- Determine the most appropriate means of linking a future recreational pathway system across Richmond Street North.

Richmond Street North Pedestrian Crossing - MCEA

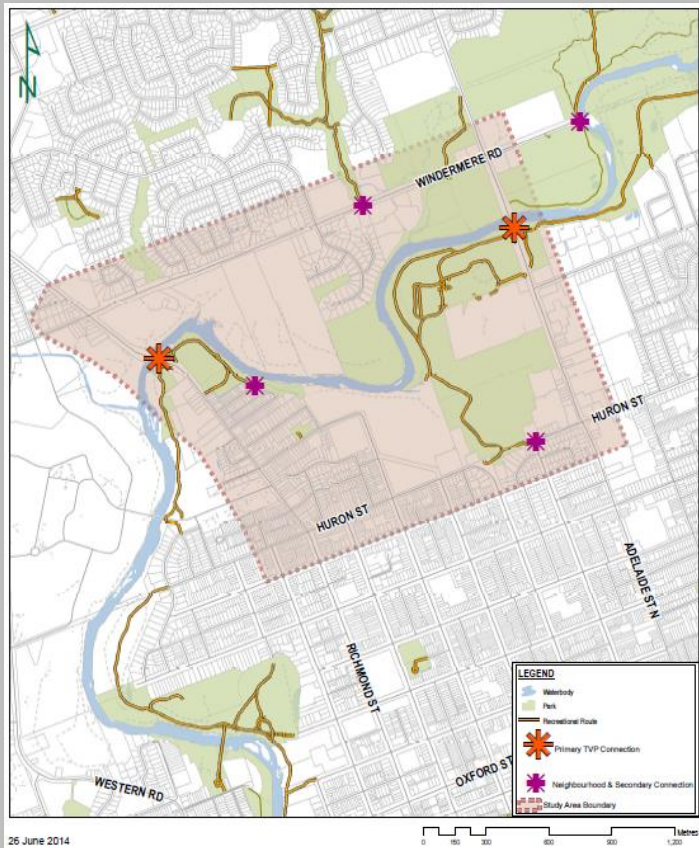
■ Study Area & Preliminary Options to be Assessed



Richmond to Adelaide TVP - MCEA

■ Study Context

- Numerous studies confirm the need to complete gaps in the TVP.
- Richmond to Adelaide = highest priority.



■ Study Overview

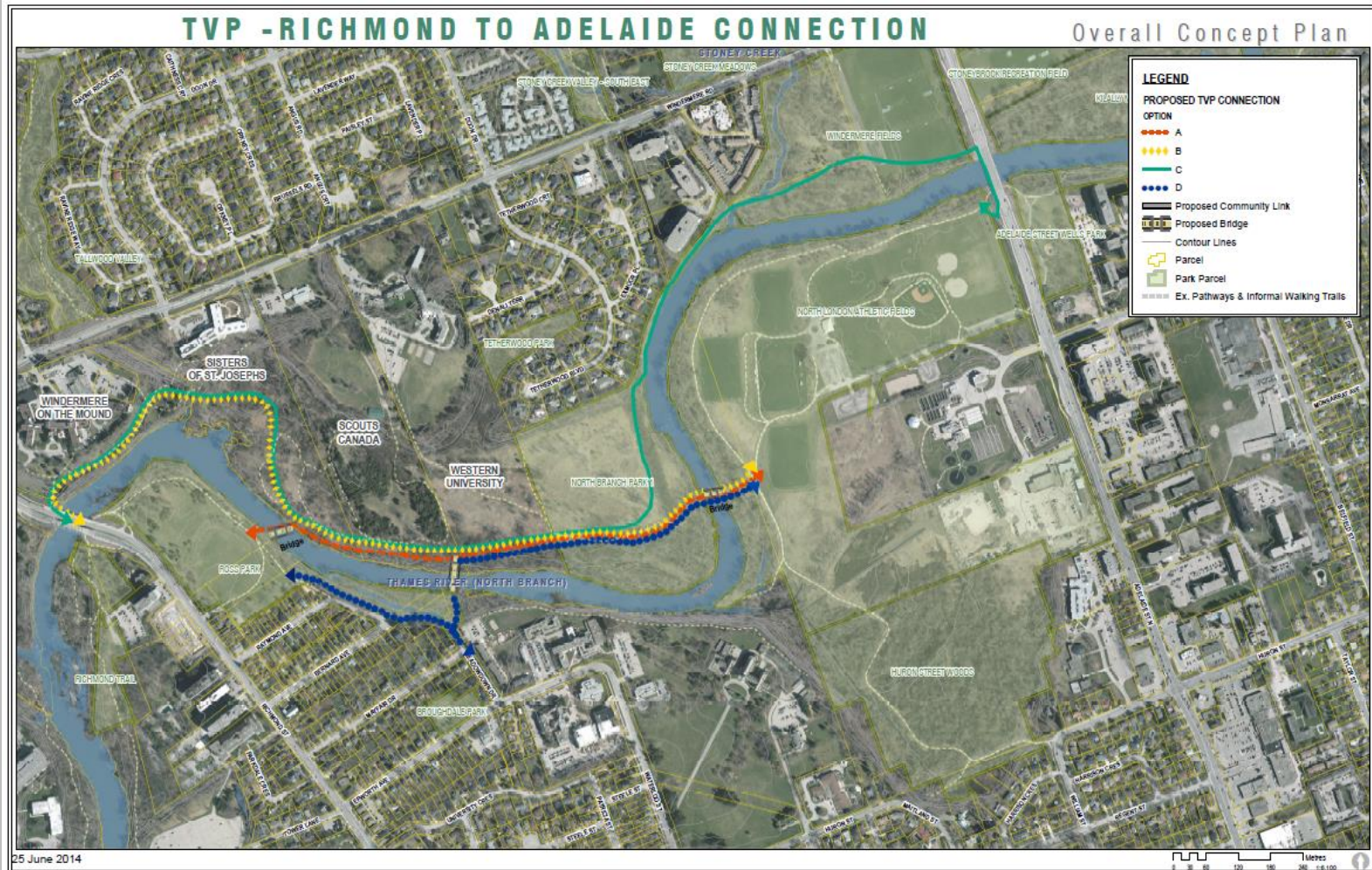
- Project Manager: Jeff Bruin
- Consultant: Dillon Consulting Ltd.
- Study Type: Schedule 'C' MCEA
- Started: September 2014
- Anticipated Completion: November 2015
- Status: Preparing for PIC #1 & formal notifications. Ecological inventories progressing.

■ Study Objective

- Identify the preferred alignment for the Thames Valley Parkway (primary pathway system) between Richmond Street and Adelaide Street North, as well as secondary pathway connections to surrounding neighbourhoods.

Richmond to Adelaide TVP - MCEA

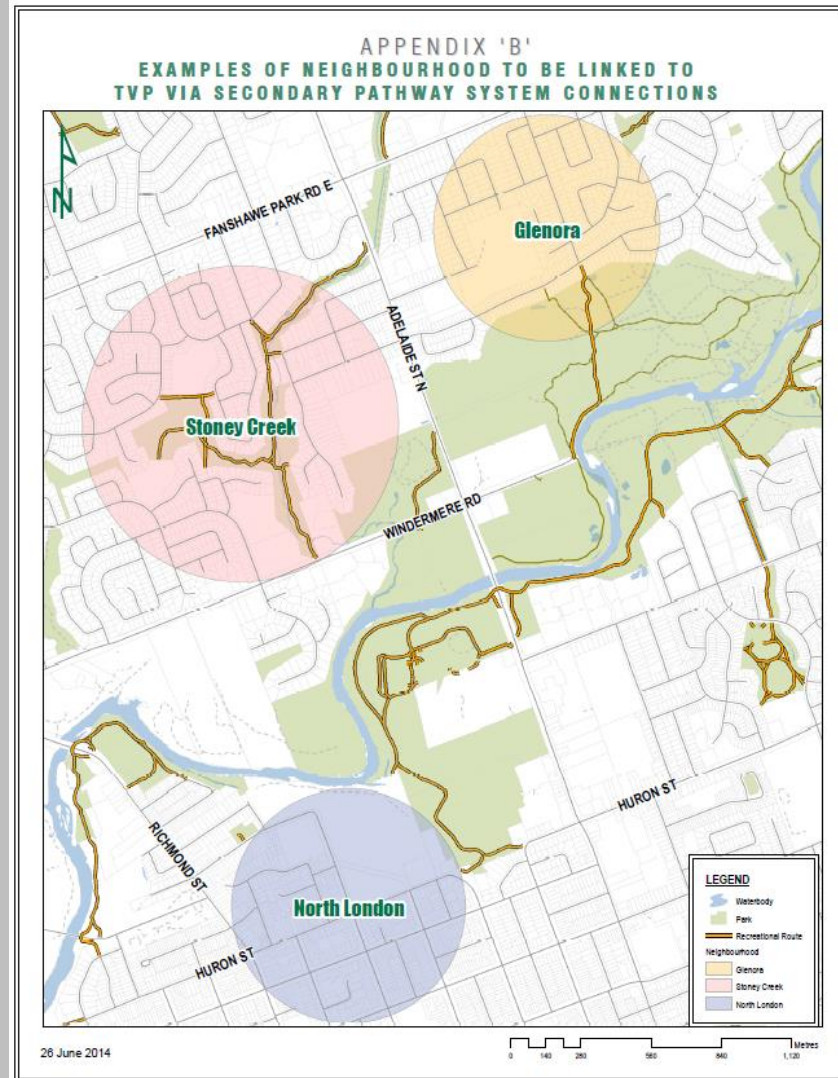
- Draft TVP (primary pathway) Options to be Assessed



Richmond to Adelaide TVP - MCEA

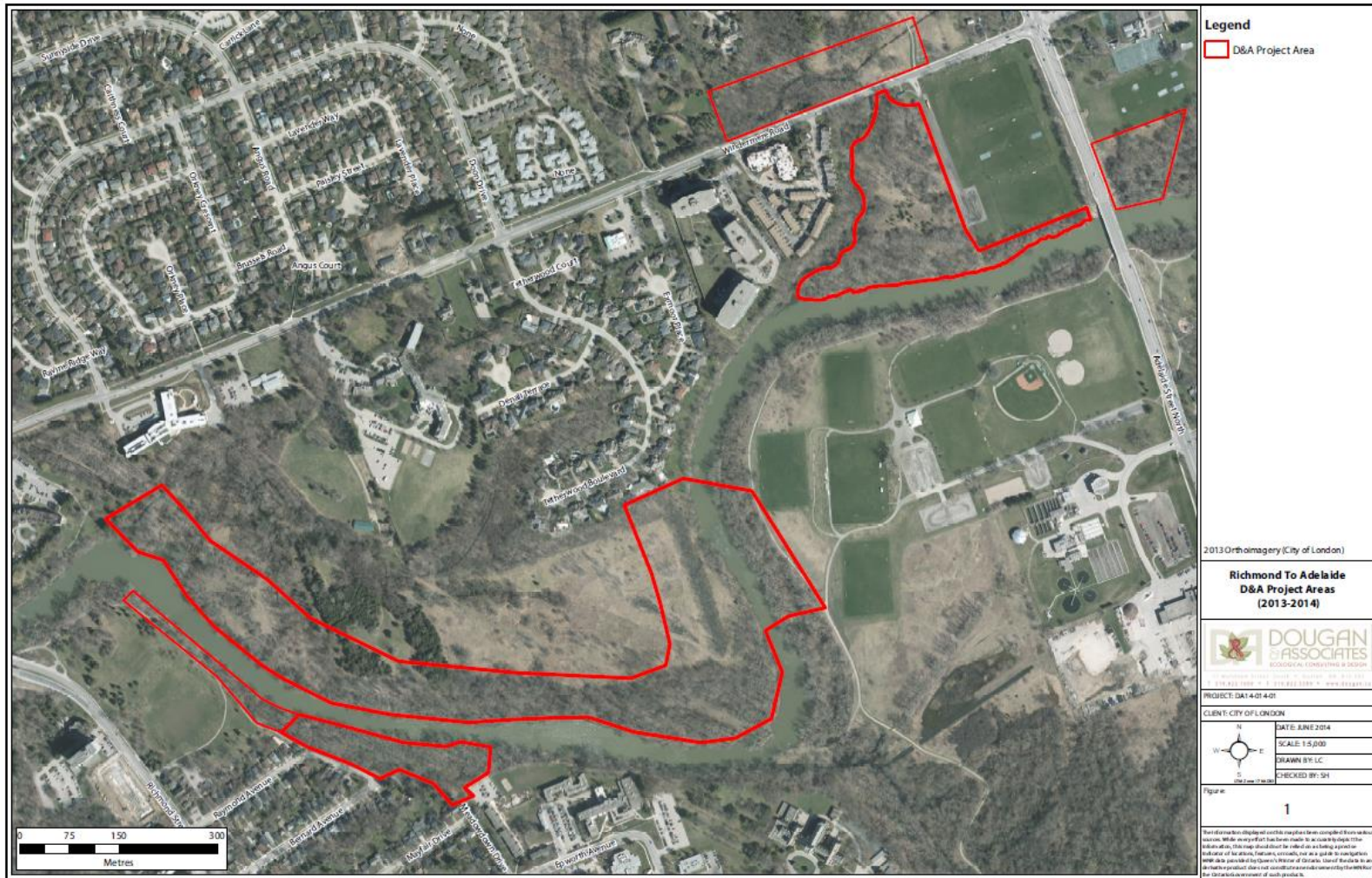
■ Neighbourhood Linkage Options to be developed & Assessed

- Stoney Creek/Masonville neighbourhood
- Glenora neighbourhood
- North London neighbourhood



Richmond to Adelaide TVP - MCEA

- Background Ecological Inventory Completed 2012/2013



Summary & Discussion Regarding Ongoing MCEAs

■ Summary

- Lots of opportunity for CAC to become involved with current and future pathway studies.
- Staff would encourage CAC members to attend Public Meetings for major pathway projects.
- Staff expect real progress to be made on numerous 'big picture' recreational pathway projects over the next 5-years.

■ Opportunities for CAC Involvement

- A strong, unified voice of support for London's recreational pathway system & associated infrastructure.
- Formal input into 'big picture' master plans (ex. Active Transportation Master Plan).
- Formal comments at critical planning stages for priority capital projects (ex. MCEAs).
- Others?

