



West London Neighbourhood Profile

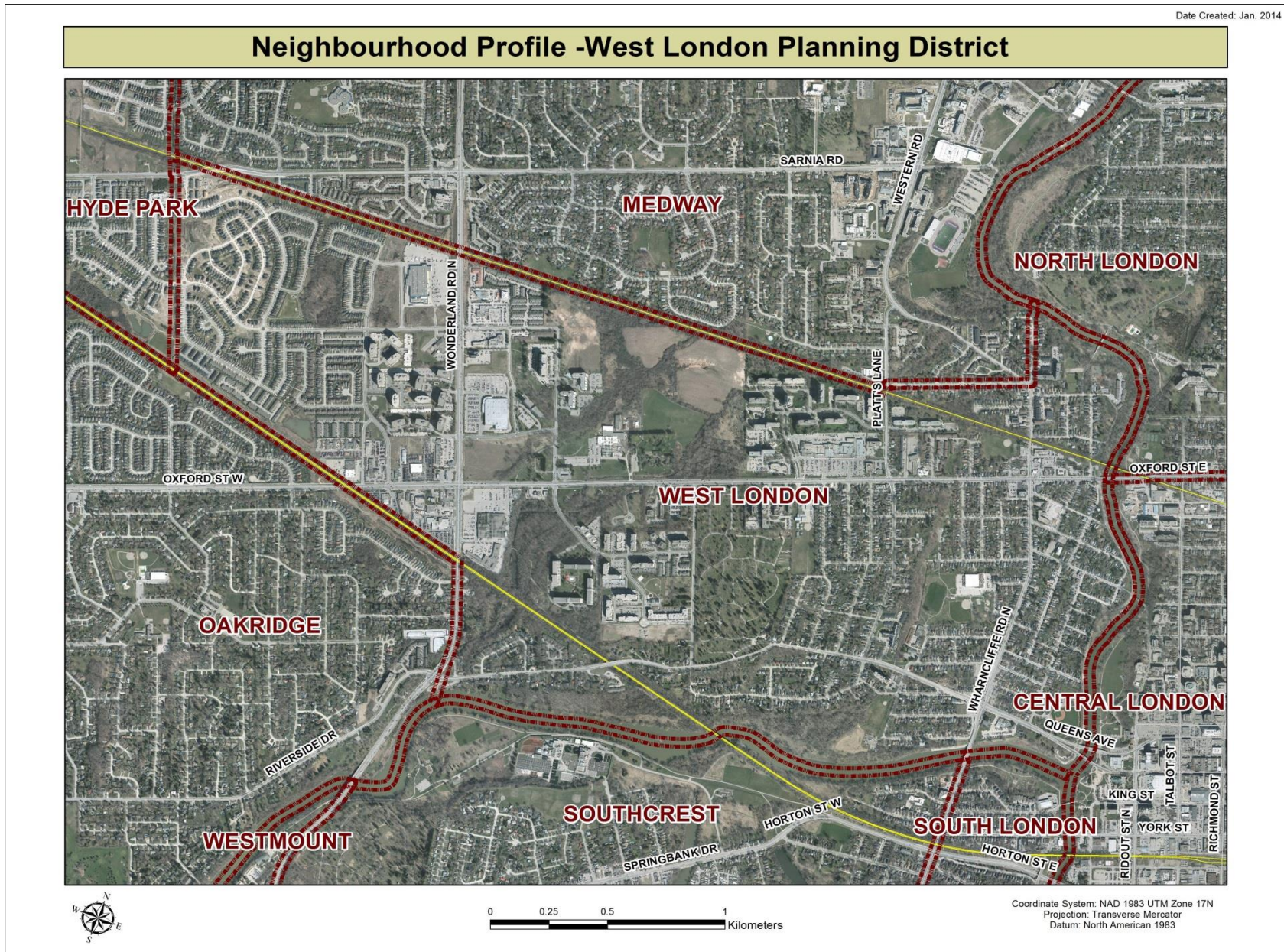
For further information contact:

John-Paul Sousa

Planning Research Analyst

Direct: (519) 661-2500 ext. 5989 | email: jpsousa@london.ca

Date Created: Jan. 2014

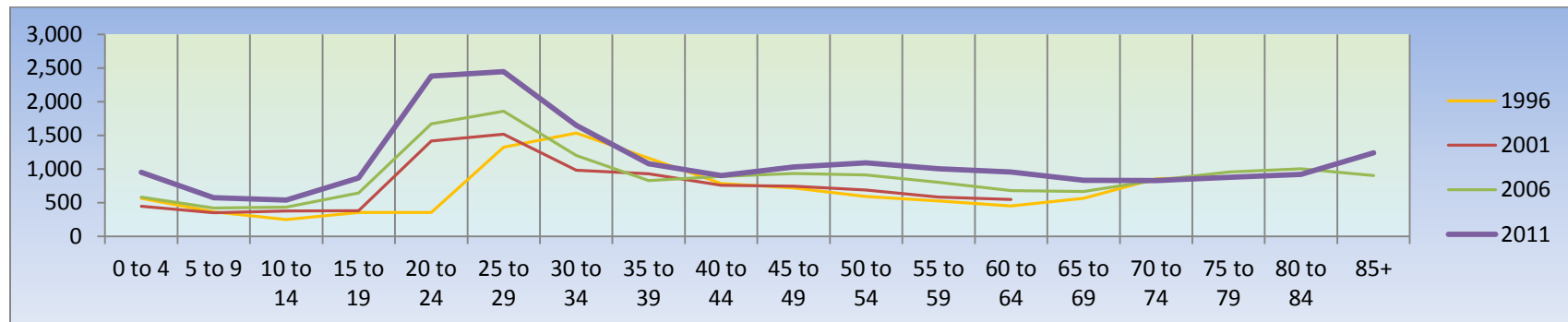


Population Characteristics & Age Distribution

West London Neighbourhood	1996	2001	2006	2011	Change From Previous Period	
Total Population	13,270	13,945	16,240	20,165	↑	24%
Female	7,535	8,035	9,200	11,160	↑	21%
Male	5,735	5,910	7,035	9,005	↑	28%

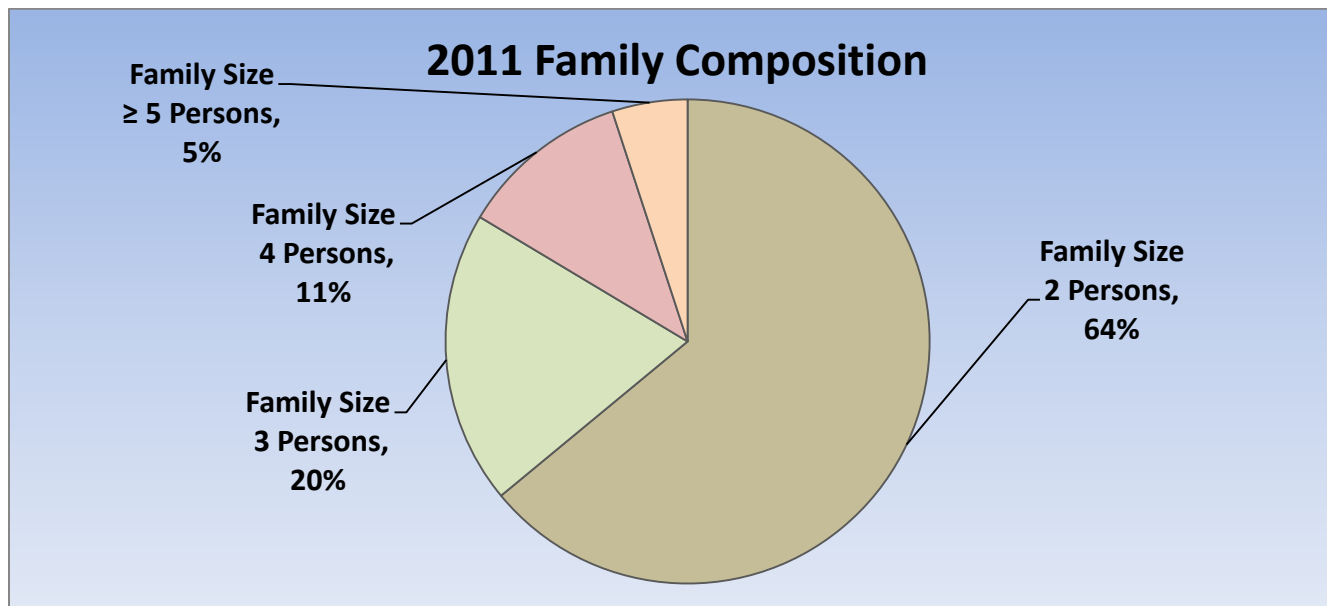
Age Structure	1996	2001	2006	2011	Change From Previous Period		As a % of Neighbourhood
0-19	1,535	1,555	2,085	2,935	↑	41%	15%
0 to 4	565	445	585	950	↑	62%	5%
5 to 9	365	350	420	575	↑	37%	3%
10 to 14	250	375	435	540	↑	24%	35
15 to 19	355	380	645	870	↑	35%	4%
20-44	5,525	5,600	6,455	8,460	↑	31%	42%
45-64	2,130	2,570	3,330	4,080	↑	23%	20%
65+	4,095	4,225	4,365	4,700	↑	7%	23%
Median Age	N.A.	N.A.	N.A.	37.9			

2011 Census Age Cohort Breakout	Male	Female	Total	As a % of Neighbourhood
0 to 4	475	475	950	4.71%
5 to 9	295	280	575	2.85%
10 to 14	265	275	540	2.68%
15 to 19	430	440	870	4.31%
20 to 24	1090	1,290	2,380	11.80%
25 to 29	1165	1,280	2,445	12.12%
30 to 34	860	790	1,650	8.18%
35 to 39	570	510	1,080	5.35%
40 to 44	470	435	905	4.49%
45 to 49	500	530	1,030	5.11%
50 to 54	470	620	1,090	5.40%
55 to 59	470	535	1,005	4.98%
60 to 64	425	530	955	4.73%
65 to 69	320	515	835	4.14%
70 to 74	290	540	830	4.11%
75 to 79	320	555	875	4.34%
80 to 84	285	635	920	4.56%
85+	315	925	1,240	6.15%
Total	9,015	11,160	20,175	



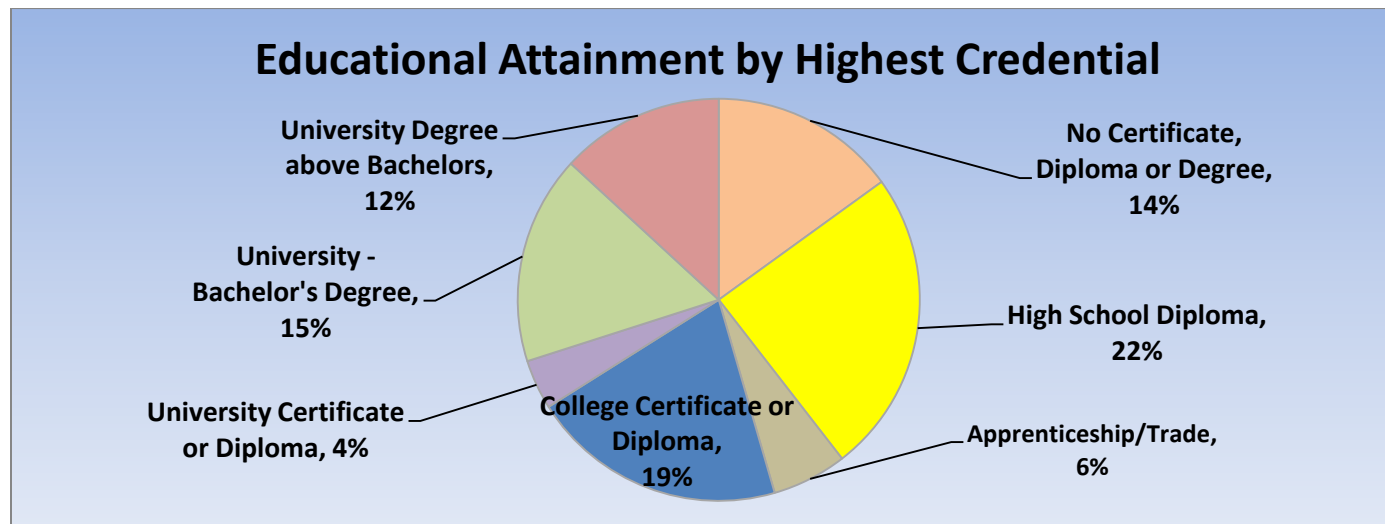
Marital Status	1996	2001	2006	2011	Change From Previous Period	As a % of Neighbourhood
Single	4,110	4,660	5,695	5,985	↑ 5%	30%
Married	4,420	4,405	5,145	6,190	↑ 20%	31%
Common-Law	740	1,050	1,295	1,670	↑ 29%	8%
Divorced	1,155	1,280	1,410	1,465	↑ 4%	7%
Separated	510	515	615	695	↑ 13%	3%
Widowed	1,905	1,925	1,915	2,090	↑ 9%	10%
Citizenship, Immigration & Ethnic Identity	1996	2001	2006	2011	Change From Previous Period	As a % of Neighbourhood
Citizenship						
Canadian Citizens	12,595	12,875	14,900	16,320	↑ 10%	81%
Non-Canadian Citizens	675	1,070	1,340	3,040	↑ 127%	15%
Immigration Status						
Canadian Born Population	10,280	10,225	11,740	12,605	↑ 7%	63%
Foreign Born Population	2,840	3,565	3,935	5,555	↑ 41%	28%
Visible Minority Population	905	1,355	2,450	5,190	↑ 112%	26%
Aboriginal Identity Population	120	185	170	475	↑ 179%	2%

Family Composition	1996	2001	2006	2011	Change From Previous Period	As a % of Neighbourhood
Number of Census Families	3,005	3,210	3,850	4,570	↑ 19%	
Family Size - 2 Persons	2,160	2,240	2,580	2,925	↑ 13%	64%
Family Size - 3 Persons	465	575	705	895	↑ 27%	20%
Family Size - 4 Persons	290	290	420	520	↑ 24%	11%
Family Size - ≥ 5 Persons	100	106	145	230	↑ 59%	5%
Census Family - Average Size	2.00	3.00	3.00			



Family Structure & Number of Children	1996	2001	2006	2011	Change From Previous Period	
Married Couples	2,175	2,165	2,535	2,920	↑	15%
Without Children	1,525	1,385	1,605	1,685	↑	5%
With Children	650	785	935	1,235	↑	32%
Common-Law	370	525	645	835	↑	29%
Without Children	285	465	495	685	↑	38%
With Children	90	60	150	150	—	—
Lone Parent Families	460	515	665	815	↑	23%
Female Headed	410	445	545	690	↑	27%
1 Child	310	325	395	465	↑	18%
2 Children	70	105	90	175	↑	94%
≥ 3 Children	25	15	90	50	↓	(-44%)
Male Headed	50	70	115	125	↑	9%
1 Child	45	65	85	90	↑	6%
2 Children	10	10	15	30	↑	100%
≥ 3 Children	0	0	15	5	↓	(-67%)

Educational Attainment by Credential	1996	2001	2006	2011	Change From Previous Period	As a % of Neighbourhood
No Certificate, Diploma or Degree	N.A.	N.A.	2,765	2,610	↓ (-6%)	13%
High School Diploma or Equivalent	N.A.	N.A.	4,070	4,250	↑ 4%	21%
Apprenticeship, or Trade Certificate	365	1,080	1,125	1,045	↓ (-7%)	5%
College Certificate or Diploma	N.A.	1,885	2,655	3,570	↑ 34%	18%
University Certificate or Diploma	N.A.	N.A.	175	695	↑ 297%	3%
University -Bachelor's Degree	N.A.	N.A.	2,115	2,915	↑ 38%	14%
University Degree above bachelor level (M.A. or PhD)	N.A.	N.A.	1,025	2,285	↑ 123%	11%

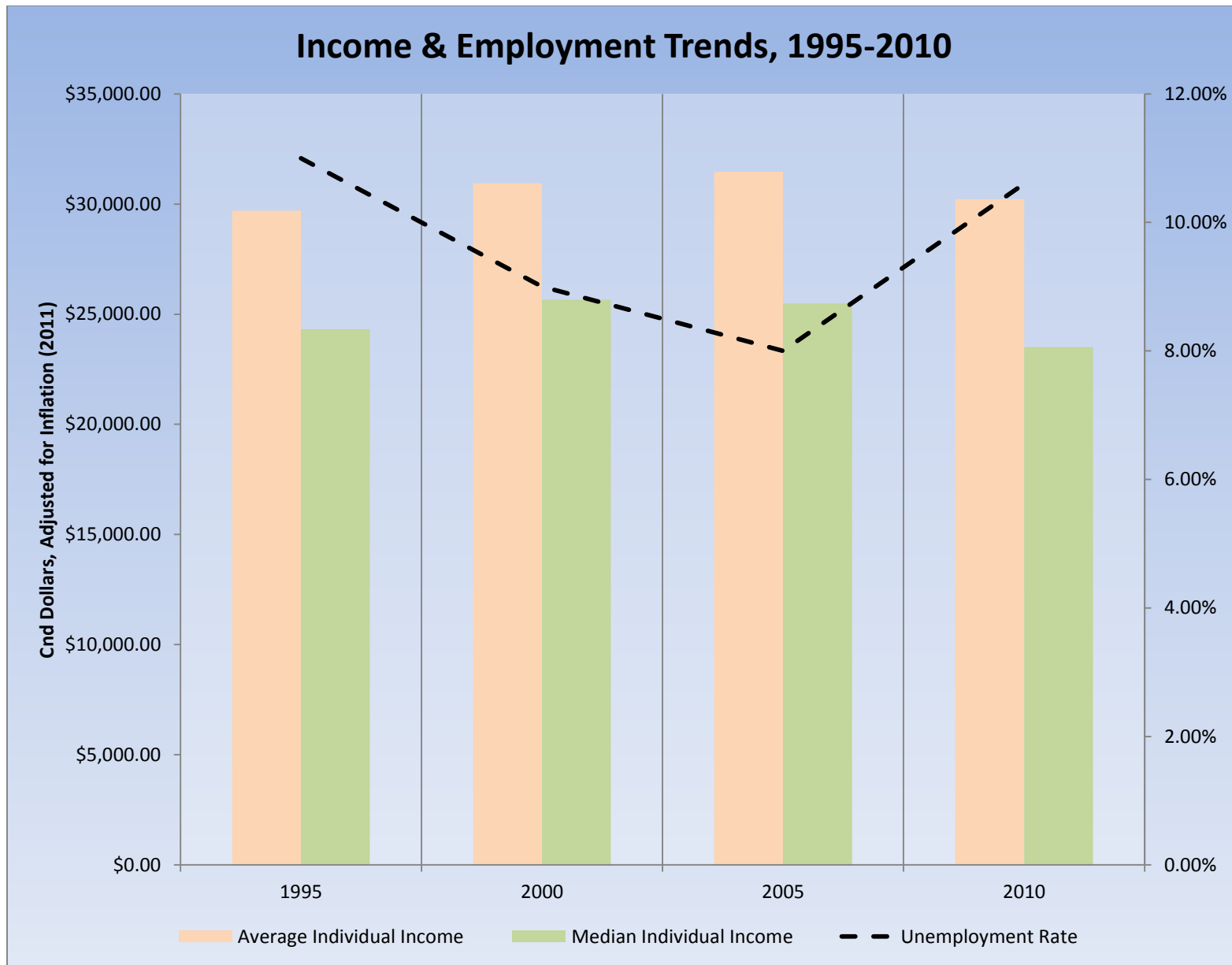


Housing by Structure Type & Tenure	1996	2001	2006	2011	Change From Previous Period	As a % of Neighbourhood
Total Occupied Dwellings	7,880	8,425	9,325	10,740	15%	
Single-Detached	1,475	1,545	1,650	1,970	19%	18%
Semi-Detached	160	125	150	175	17%	2%
Row House	45	165	390	520	33%	5%
Duplex	235	235	345	330	(-4%)	3%
Apartment < 5 Storeys	325	535	420	360	(-14%)	69%
Apartment ≥ 5 Storeys	5,635	5,825	6,355	7,375	16%	3%
Number of Owned Dwellings	1,435	1,640	2,310	2,640	14%	
Owned as a % of Total	18%	19%	25%	25%	— —	
Number of Rented Dwellings	6,445	6,785	7,010	8,050	15%	
Rented as a % of Total	82%	81%	75%	75%	— —	
Average # of Rooms	5	5	5	4.60		
Average # of Bedrooms	2	2	2	N.A.	— —	
Average Gross Rent	\$626.00	\$661.00	\$746.00	\$848.00	14%	
Average Value of Dwelling	\$129,185.00	\$133,824.00	\$189,231.00	\$237,454.00	25%	

Labour Market Indicators	1996	2001	2006	2011	Change From Previous Period	As a % of Neighbourhood
Total Labour Force ≥ 15 years	6,175	6,615	8,195	9,770	↑ 19%	
Female	3,075	3,410	4,290	4,880	↑ 14%	50%
Male	3,100	3,205	3,905	4,890	↑ 25%	50%
Unemployment Rate	11%	9%	8%	10.60%	↑	
Female	11%	8%	8%	12%	↑	
Male	12%	10%	8%	9.30%	↑	
Employment Rate	N.A.	N.A.	N.A.	50.30%		
Participation Rate	51%	52%	51%	56.20%	↑	
Female	44%	46%	50%	50.80%	↑	
Male	60%	60%	62%	63.00%	↑	
Labour Force by Sector						
Primary (Agriculture & Resources)	85	55	60	75	↑ 25%	1%
Secondary (Construction & Manufacturing)	925	915	960	1,350	↑ 41%	14%
Tertiary Services	5,000	5,570	6,875	8,115	↑ 18%	85%

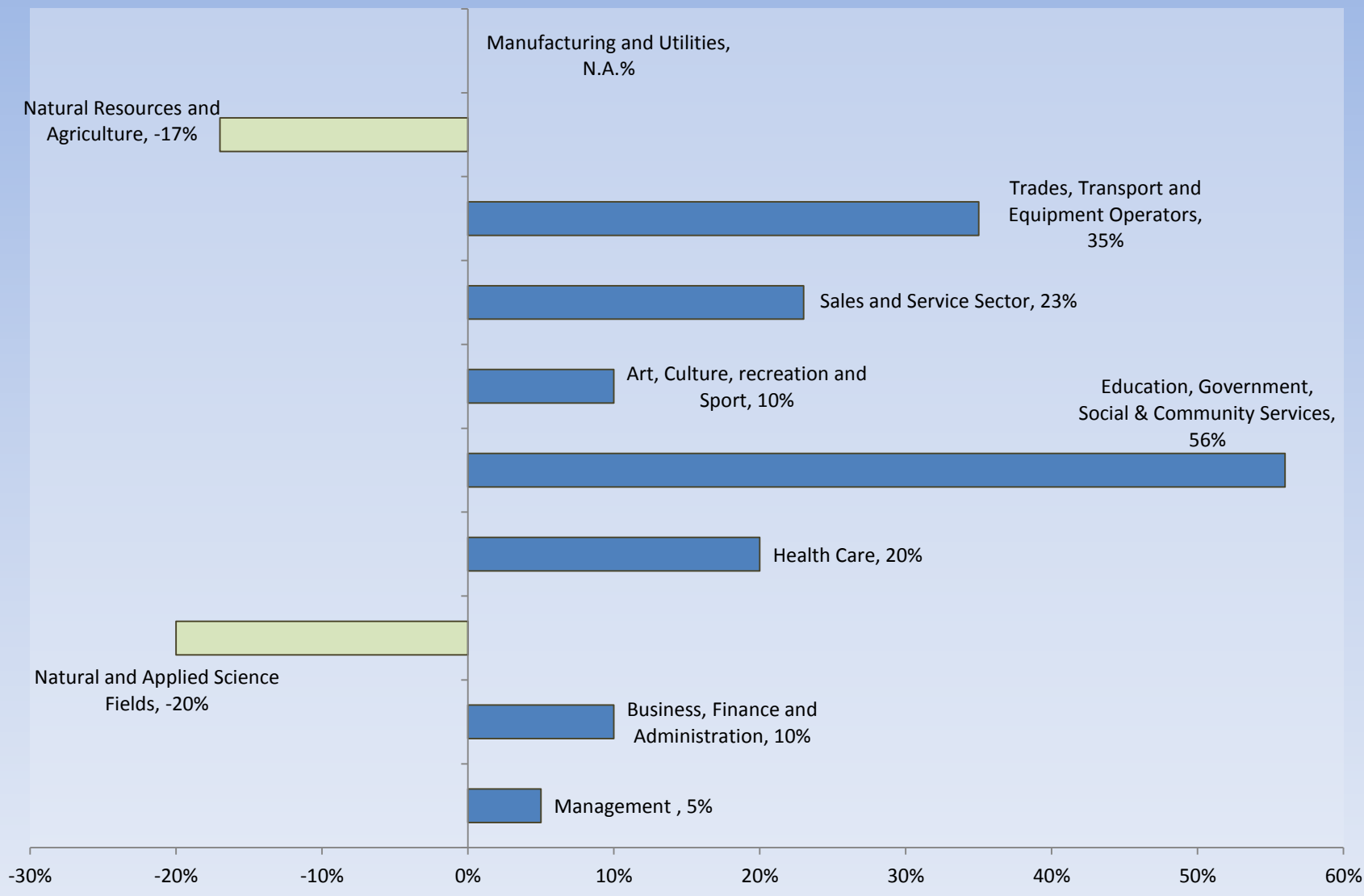
Income Characteristics of Economically Active Population	1996	2001	2006	2011	Change From Previous Period	
Individual Income						
Average Income	\$21,755.00	\$24,705.50	\$28,083.00	\$29,422.00	↑	5%
Median Income	\$17,815.00	\$20,488.50	\$22,747.00	\$22,876.00	↑	<1%
Income by Gender						
Average Income – Male	\$24,130.00	\$27,932.00	\$32,473.00	\$31,191.00	↓	(-4%)
Average Income - Female	\$19,381.00	\$21,479.00	\$24,852.00	\$27,959.00	↑	13%
Median Income – Male	\$19,833.00	\$23,384.00	\$27,539.00	\$24,380.00	↓	(-11%)
Median Income - Female	\$15,797.00	\$17,593.00	\$20,494.00	\$22,101.00	↑	8%
Household Income						
Average Household Income	\$32,084.00	\$35,809.00	\$43,210.00	\$46,008.00	↑	7%
Median Household Income	\$25,745.00	\$28,358.00	\$36,204.00	\$36,530.00	↑	1%
Family Income						
Average Family Income	\$43,281.00	\$49,918.00	\$60,754.00	\$63,746.00	↑	5%
Median Family Income	\$39,025.00	\$45,253.00	\$54,194.00	\$56,804.00	↑	5%
Lone-Parent Families						
Average Family Income	N.A.	N.A.	N.A.	\$52,462.00		
Median Family Income	N.A.	N.A.	N.A.	\$49,751.00		

Data Note: Income figures based on previous reporting year (1995, 2000, 2005 & 2010).



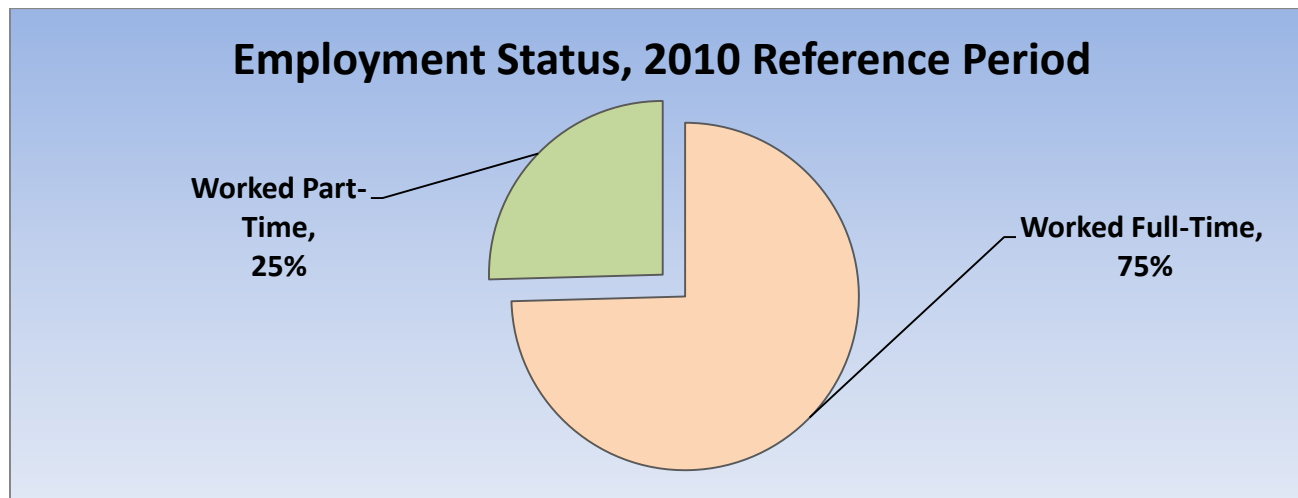
Labour Force by National Occupational Classification	1996	2001	2006	2011	Change From Previous Period		As a % of Labour Force
Management	595	500	605	635	↑	5%	6%
Business, Finance and Administration	980	1,295	1,445	1,590	↑	10%	15%
Natural and Applied Science Fields	205	450	615	490	↓	(-20%)	5%
Health Care	430	545	700	840	↑	20%	8%
Education, Government, Social & Community Services	530	790	1,045	1,635	↑	56%	16%
Art, Culture, recreation and Sport	230	295	260	285	↑	10%	3%
Sales and Service Sector	1,940	1,505	2,150	2,640	↑	23%	25%
Trades, Transport and Equipment Operators	650	735	685	925	↑	35%	9%
Natural Resources and Agriculture	N.A.	N.A.	90	75	↓	(-17%)	1%
Manufacturing and Utilities	N.A.	N.A.	N.A.	1,350	↑		13%

Employment Trends by Occupational Breakout, 2006-2011



Class of Worker	1996	2001	2006	2011	Change From Previous Period	As a % Neighbourhood
Employee	5,480	6,030	7,560	8,930	↓ (-18%)	96%
Female	2,810	3,180	3,995	4,535		
Male	2,680	2,850	3,565	4,395		
Self-Employed	520	460	515	380	↑ 26%	4%
Female	190	160	175	215		
Male	330	300	340	380		

Employment Status	1996	2001	2006	2011	Change From Previous Period	As a % of Active Labour Force
Worked Full-Time in 2010	N.A.	N.A.	N.A.	6,860	N.A.	75%
Worked Part-Time in 2010	N.A.	N.A.	N.A.	2,34-	N.A.	25%



Mode of Transport to Work	1996	2001	2006	2011	Change From Previous Period	As a % of Neighbourhood
Automobile -As a Driver	3,370	3,930	4,710	5,635	↑ 20%	69%
Car-Pool	365	440	615	435	↓ (-29%)	5%
Public Transportation	650	725	1,040	1,180	↑ 13%	14%
Walked or Bicycled	600	605	735	770	↑ 5%	9%
Other Modes	45	50	70	125	↑ 79%	2%
Median Commuting Duration	N.A.	N.A.	N.A.	15.9 min		

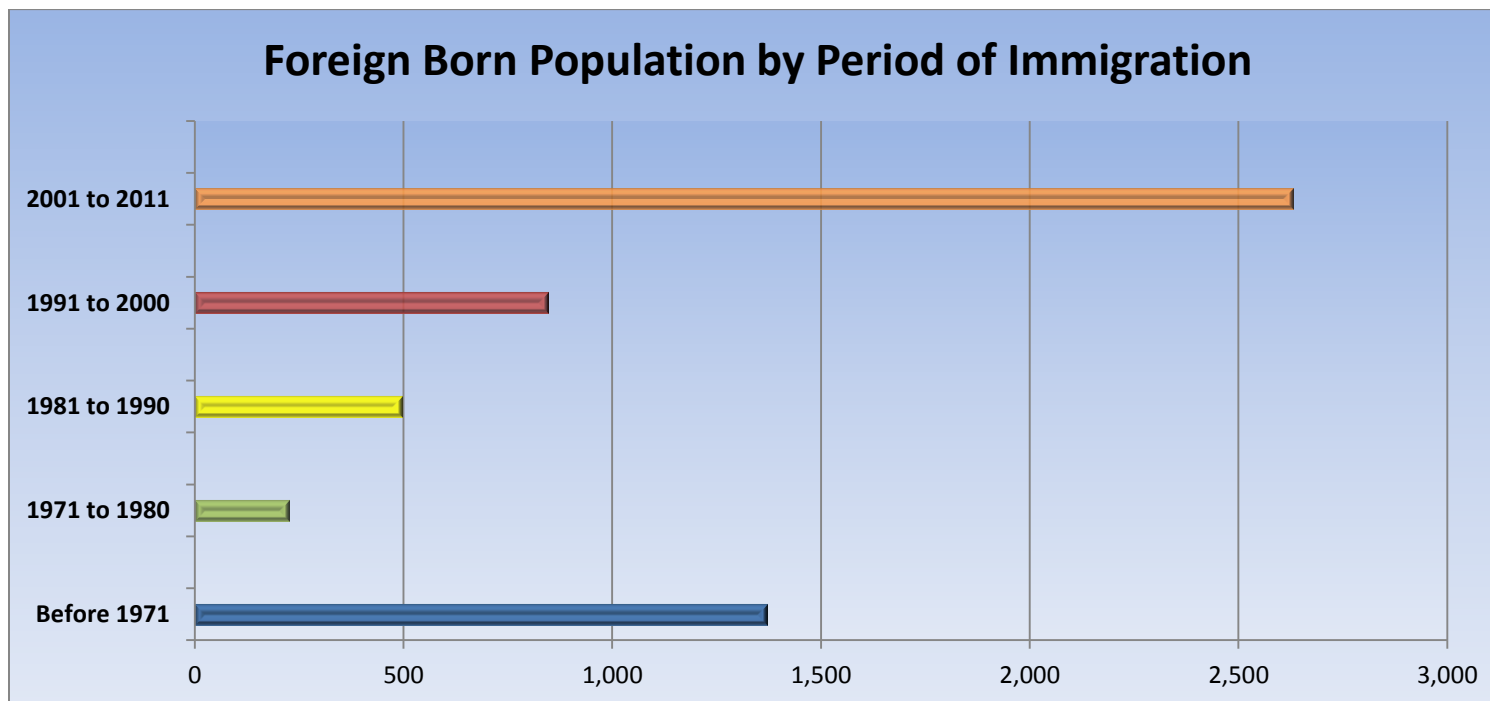
Place of Work	1996	2001	2006	2011	Change From Previous Period	As a % of Neighbourhood
Worked at Home	295	285	330	530	↑ 61%	6%
Worked at a Fixed Address	4,720	5,245	6,515	7,295	↑ 12%	84%
No Fixed Workplace Address	405	505	665	855	↑ 29%	10%
Worked within Municipality	4,250	4,880	5,915	N.A.	— —	
Work in a different Municipality	470	370	595	N.A.	— —	
Worked outside Canada	40	10	20	60	↑ 200%	

Mobility/Migration Status	1996	2001	2006	2011	Change From Previous Period	As a % of Neighbourhood
Lived at the same address 5 years ago	4,910	5,480	6,265	6,435	↑	35%
Moved sometime with the last 5 years	7,790	8,020	9,390	12,005	↑ 28%	65%
Internal Migrants	2,245	2,630	2,745	3,510	↑ 28%	61%
- Intra-provincial	1,930	2,240	2,440	3,065	↑	
- Inter-provincial	315	390	305	445	↑	
External Migrants	485	820	1,135	2,250	↑ 98%%	39%
Lived at the same address 1 years ago	9,610	10,540	12,540	13,910	↑ 11%	73%
Moved sometime with the last year	3,545	3,270	3,575	5,215	↑ 46%	27%
Internal Migrants	760	740	870	1,600	↑ 84%	74%
- Intra-provincial	630	605	760	1,350	↑ 78%	
- Inter-provincial	135	135	115	250	↑ 118%	
External Migrants	145	230	225	575	↑ 156%	26%

Place of Birth	1996	2001	2006	2011	Change From Previous Period		As a % of Neighbourhood
Total Immigrant Population	N.A.	N.A.	3,935	5,555	↑	41%	28%
Place of Birth by Continent							
North America (US only)	N.A.	N.A.	160	250	↑	56%	1%
Africa	N.A.	N.A.	190	185	↓	(-3%)	1%
Asia	N.A.	N.A.	1,005	1,840	↑	83%	9%
Caribbean	N.A.	N.A.	65	170	↑	162%	1%
Central and South America	N.A.	N.A.	N.A.	1,015	↑		5%
Europe	N.A.	N.A.	2,210	2,070	↓	(-6%)	10%
Recent Immigration by Continent, 2006-2011							
Recent Immigrants	N.A.	N.A.	890	1,590	↑	79%	8%
North America (US only)	N.A.	N.A.	25	115	↑	360%	1%
Africa	N.A.	N.A.	35	80	↑	129%	<1%
Asia	N.A.	N.A.	440	625	↑	42%	3%
Caribbean	N.A.	N.A.	0	0	—	—	0%
Central and South America	N.A.	N.A.	185	635	↑	243%	3%
Europe	N.A.	N.A.	200	115	↓	(-43%)	1%

Immigration by Place of Birth	1996	2001	2006	2011	Change From Previous Period	As a % of Neighbourhood
1. Colombia	N.A.	N.A.	N.A.	830		4%
2. United Kingdom	N.A.	N.A.	N.A.	570		3%
3. China	N.A.	N.A.	N.A.	415		2%
4. United States of America	N.A.	N.A.	N.A.	250		1%
5. Iran	N.A.	N.A.	N.A.	245		1%
6. Poland	N.A.	N.A.	N.A.	215		1%
7. Netherlands	N.A.	N.A.	N.A.	205		1%
8. India	N.A.	N.A.	N.A.	175		1%
9. South Korea	N.A.	N.A.	N.A.	175		1%
10. Pakistan	N.A.	N.A.	N.A.	140		1%

Period of Immigration	1996	2001	2006	2011	Change From Previous Period	As a % of Neighbourhood
Before 1971	N.A.	N.A.	1,510	1,370	↓ (-9%)	7%
1971 to 1980	N.A.	N.A.	300	225	↓ (-25%)	1%
1981 to 1990	N.A.	N.A.	315	495	↑ 57%	2%
1991 to 2000	N.A.	N.A.	990	845	↓ (-15%)	4%
2001 to 2011	N.A.	N.A.	890	2,630	↑ 196%	13%



Language	1996	2001	2006	2011	Change From Previous Period		As a % of Neighbourhood
Knowledge of Official Languages							
English Only	12,170	12,685	14,565	17,705	↑	22%	88%
French Only	0	0	10	25	↑	150%	<1%
English and French	980	1,170	1,460	1,520	↑	4%	8%
Neither English or French	120	100	210	400	↑	90%	2%
Language Spoken Most Often at Home							
English	12,200	11,825	14,105	15,300	↑	8%	75%
French	25	10	90	65	↓	(-28%)	<1%
Non-Official Language	825	680	1,825	3,495	↑	92%	17%
Mother Tongue *							
English	11,160	11,045	12,330	13,295	↑	8%	66%
French	200	235	270	270	—	—	1%
Non-Official Language	1,790	2,455	3,475	5,715	↑	64%	28%

* Statistics Canada defines 'mother tongue' as the first language learned in childhood and still understood by the individual at the time of census reporting.

Non-Official Languages Spoken Top 10 Reported	1996	2001	2006	2011	Change From Previous Period	As a % of Neighbourhood
1. Spanish	N.A.	N.A.	N.A.	1,550		8%
2. Chinese*	N.A.	N.A.	N.A.	1,015		5%
3. Arabic	N.A.	N.A.	N.A.	885		4%
4. German	N.A.	N.A.	N.A.	380		2%
5. Persian	N.A.	N.A.	N.A.	345		2%
6. Korean	N.A.	N.A.	N.A.	290		1%
7. Polish	N.A.	N.A.	N.A.	270		1%
8. Italian	N.A.	N.A.	N.A.	200		1%
9. Hindi	N.A.	N.A.	N.A.	200		1%
10. Dutch	N.A.	N.A.	N.A.	175		1%

* Refers to Cantonese and Mandarin language speakers as well as others who do not specify otherwise.

Religious Identification	1996	2001	2006	2011	Change From Previous Period	As a % of Neighbourhood
Buddhist	N.A.	N.A.	N.A.	90		<1%
Christian	N.A.	N.A.	N.A.	11,690		58%
Anglican	N.A.	N.A.	N.A.	1,510		7%
Baptist	N.A.	N.A.	N.A.	530		3%
Catholic	N.A.	N.A.	N.A.	4,650		23%
Orthodox	N.A.	N.A.	N.A.	465		2%
Lutheran	N.A.	N.A.	N.A.	175		1%
Pentecostal	N.A.	N.A.	N.A.	180		1%
Presbyterian	N.A.	N.A.	N.A.	590		3%
United Church	N.A.	N.A.	N.A.	1,800		9%
Other Christian	N.A.	N.A.	N.A.	1,790		9%
Hindu	N.A.	N.A.	N.A.	215		1%
Jewish	N.A.	N.A.	N.A.	105		1%
Muslim	N.A.	N.A.	N.A.	1,590		8%
Sikh	N.A.	N.A.	N.A.	10		<1%
Aboriginal Spirituality	N.A.	N.A.	N.A.	30		<1%

Notes:

- (1) Source Data –Statistics Canada. 1996-2011 Census Data, Customized Profiles. Ottawa, Canada
- (2) Data also derived from Statistics Canada’s National Household Survey (NHS)
- (3) Customized Community and Neighbourhood Profiles tabulated and compiled by the City of London’s Planning Division –Policy Planning and Research Section.