



Uplands Neighbourhood Profile

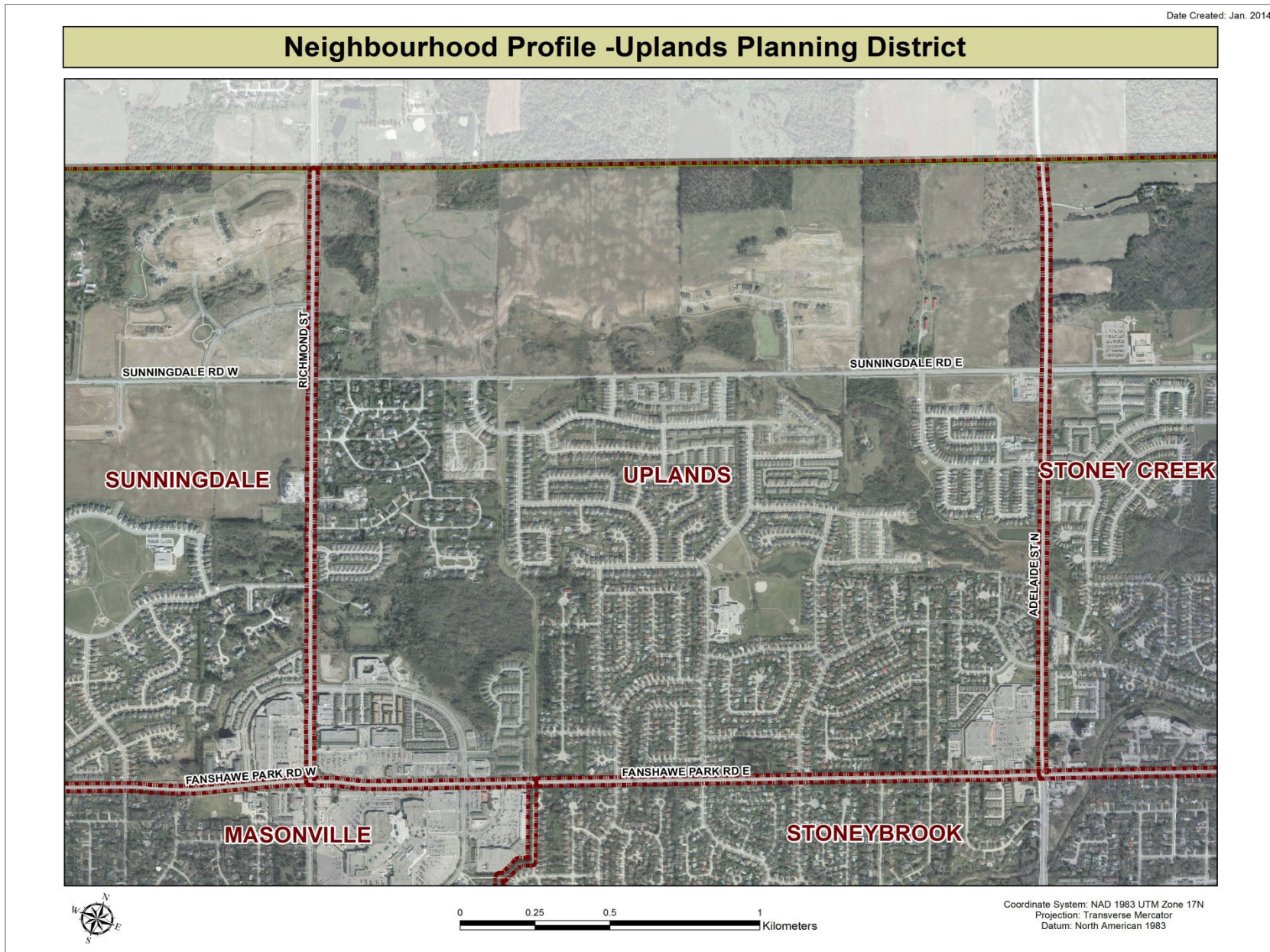
For further information contact:

John-Paul Sousa

Planning Research Analyst

Direct: (519) 661-2500 ext. 5989 | email: jpsousa@london.ca

Date Created: Jan. 2014

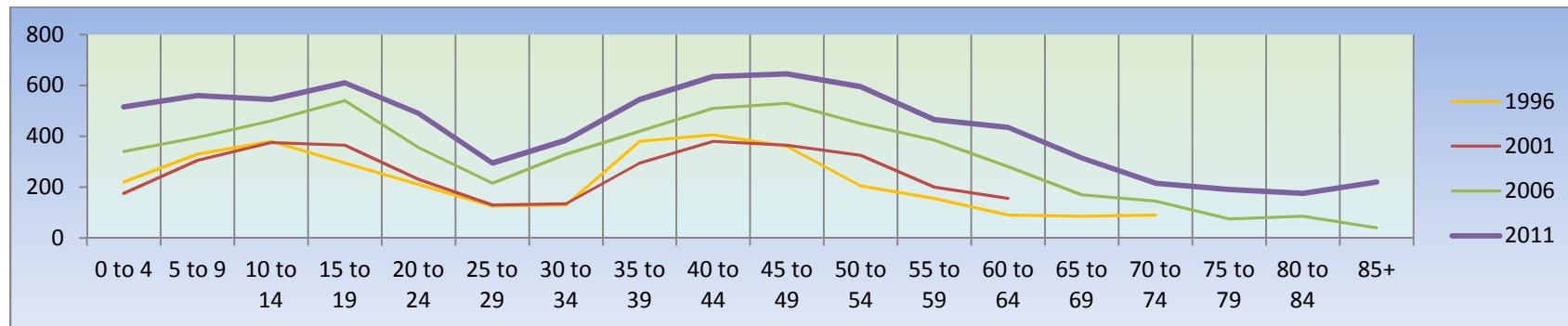


Population Characteristics & Age Distribution

Uplands Neighbourhood	1996	2001	2006	2011	Change From Previous Period	
Total Population	3,475	3,770	5,705	7,835	↑	37%
Female	1,720	1,905	2,885	4,045	↑	40%
Male	1,755	1,865	2,820	3,790	↑	34%

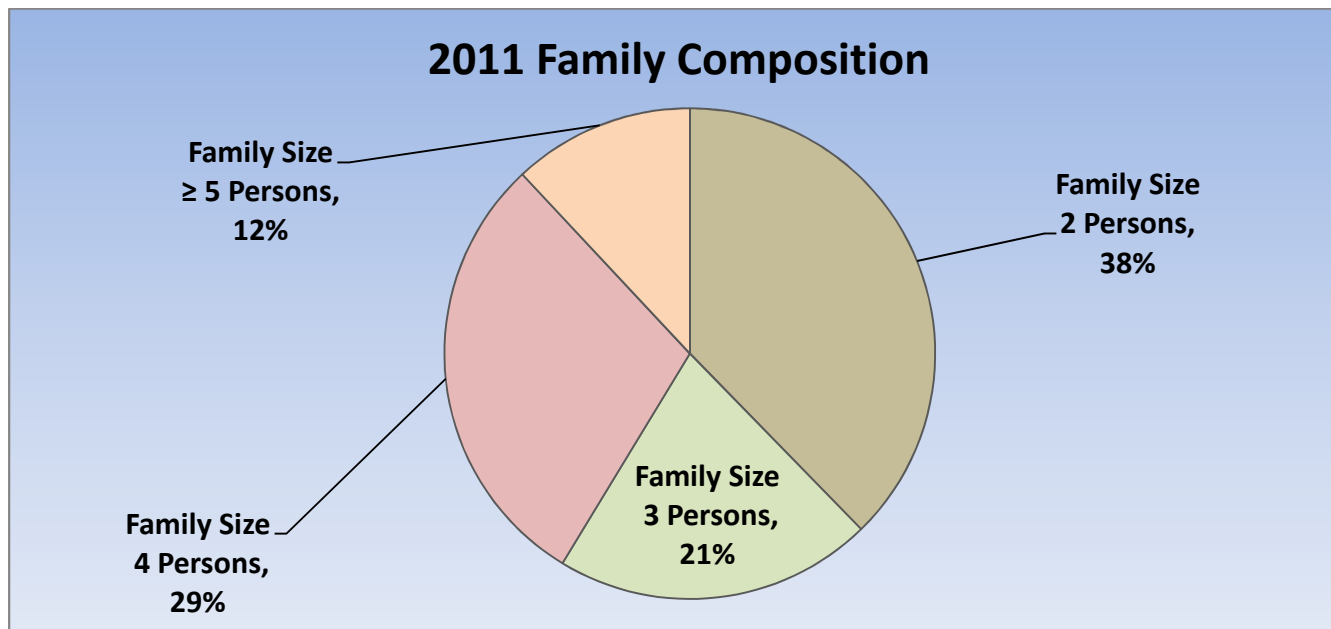
Age Structure	1996	2001	2006	2011	Change From Previous Period		As a % of Neighbourhood
0-19	1,225	1,220	1,735	2,235	↑	29%	29%
0 to 4	220	175	340	515	↑	51%	7%
5 to 9	330	305	395	560	↑	42%	7%
10 to 14	380	375	460	550	↑	20%	7%
15 to 19	295	365	540	610	↑	13%	8%
20-44	1,250	1,170	1,830	2,345	↑	28%	30%
45-64	810	1,045	1,675	2,140	↑	28%	27%
65+	220	330	515	1,115	↑	117%	14%
Median Age	N.A.	N.A.	N.A.	39.8			

2011 Census Age Cohort Breakout	Male	Female	Total	As a % of Neighbourhood
0 to 4	255	260	515	6.57%
5 to 9	305	255	560	7.15%
10 to 14	270	275	545	6.96%
15 to 19	310	300	610	7.79%
20 to 24	260	230	490	6.25%
25 to 29	140	155	295	3.77%
30 to 34	170	215	385	4.91%
35 to 39	250	295	545	6.96%
40 to 44	305	330	635	8.10%
45 to 49	310	335	645	8.23%
50 to 54	295	300	595	7.59%
55 to 59	225	240	465	5.94%
60 to 64	210	225	435	5.55%
65 to 69	160	155	315	4.02%
70 to 74	90	125	215	2.74%
75 to 79	95	95	190	2.43%
80 to 84	70	105	175	2.23%
85+	70	150	220	2.81%
Total	3,790	4,045	7,835	



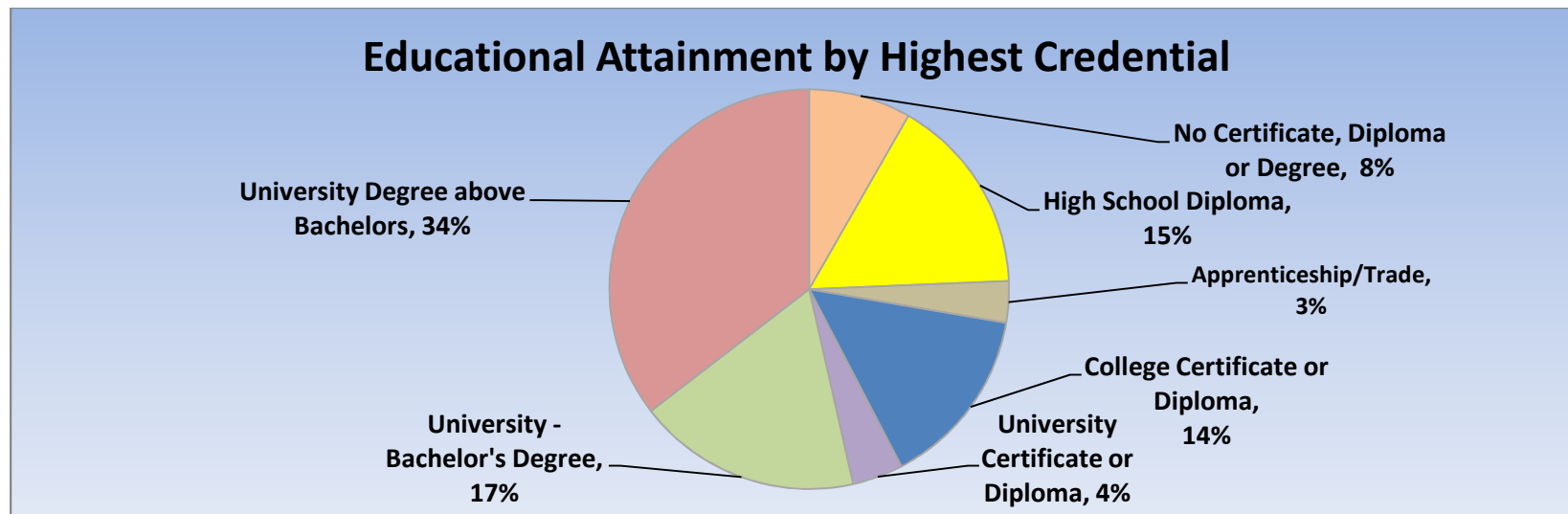
Marital Status	1996	2001	2006	2011	Change From Previous Period	As a % of Neighbourhood
Single	645	780	1,215	1,470	↑ 21%	19%
Married	1,730	1,880	2,885	3,895	↑ 35%	50%
Common-Law	60	90	175	200	↑ 14%	3%
Divorced	110	125	215	180	↓ (-16%)	2%
Separated	30	70	75	110	↑ 47%	1%
Widowed	35	65	130	365	↑ 181%	5%
Citizenship, Immigration & Ethnic Identity	1996	2001	2006	2011	Change From Previous Period	As a % of Neighbourhood
Citizenship						
Canadian Citizens	3,335	3,640	3,915	7,110	↑ 82%	91%
Non-Canadian Citizens	140	130	320	615	↑ 92%	8%
Immigration Status						
Canadian Born Population	2,710	2,845	3,915	5,410	↑ 38%	69%
Foreign Born Population	755	895	1,750	2,265	↑ 29%	29%
Visible Minority Population	400	540	1,255	2,090	↑ 67%	27%
Aboriginal Identity Population	0	30	20	90	↑ 350%	1%

Family Composition	1996	2001	2006	2011	Change From Previous Period	As a % of Neighbourhood
Number of Census Families	975	1,075	1,670	2,220	↑ 33%	
Family Size - 2 Persons	300	360	605	835	↑ 38%	38%
Family Size - 3 Persons	205	225	340	465	↑ 37%	21%
Family Size - 4 Persons	320	350	520	650	↑ 25%	29%
Family Size - ≥ 5 Persons	150	145	205	265	↑ 29%	12%
Census Family - Average Size	3.4	3.3	3.2	3,200	↑	



Family Structure & Number of Children	1996	2001	2006	2011	Change From Previous Period	
Married Couples	860	930	1,435	1,910	↑	33%
Without Children	255	315	480	670	↑	40%
With Children	605	620	955	1,240	↑	30%
Common-Law	30	50	90	100	↑	11%
Without Children	10	10	40	55	↑	38%
With Children	20	40	45	45	—	—
Lone Parent Families	85	100	140	215	↑	54%
Female Headed	80	70	125	175	↑	40%
1 Child	35	30	75	90	↑	20%
2 Children	30	35	40	70	↑	75%
≥ 3 Children	10	10	15	20	↑	33%
Male Headed	5	30	15	35	↑	133%
1 Child	N.A.	10	15	25	↑	67%
2 Children	N.A.	20	0	5	↑	100%
≥ 3 Children	N.A.	0	0	5	↑	100%

Educational Attainment by Credential	1996	2001	2006	2011	Change From Previous Period		As a % of Neighbourhood
No Certificate, Diploma or Degree	N.A.	N.A.	255	N.A.	—	—	8%
High School Diploma or Equivalent	N.A.	N.A.	670	1,195	↑	78%	15%
Apprenticeship, or Trade Certificate	55	245	205	250	↑	22%	3%
College Certificate or Diploma	N.A.	535	850	1,090	↑	28%	14%
University Certificate or Diploma	N.A.	N.A.	115	305	↑	165%	4%
University -Bachelor's Degree	N.A.	N.A.	825	1,345	↑	63%	17%
University Degree above bachelor level (M.A. or PhD)	N.A.	N.A.	460	2,635	↑	473%	34%

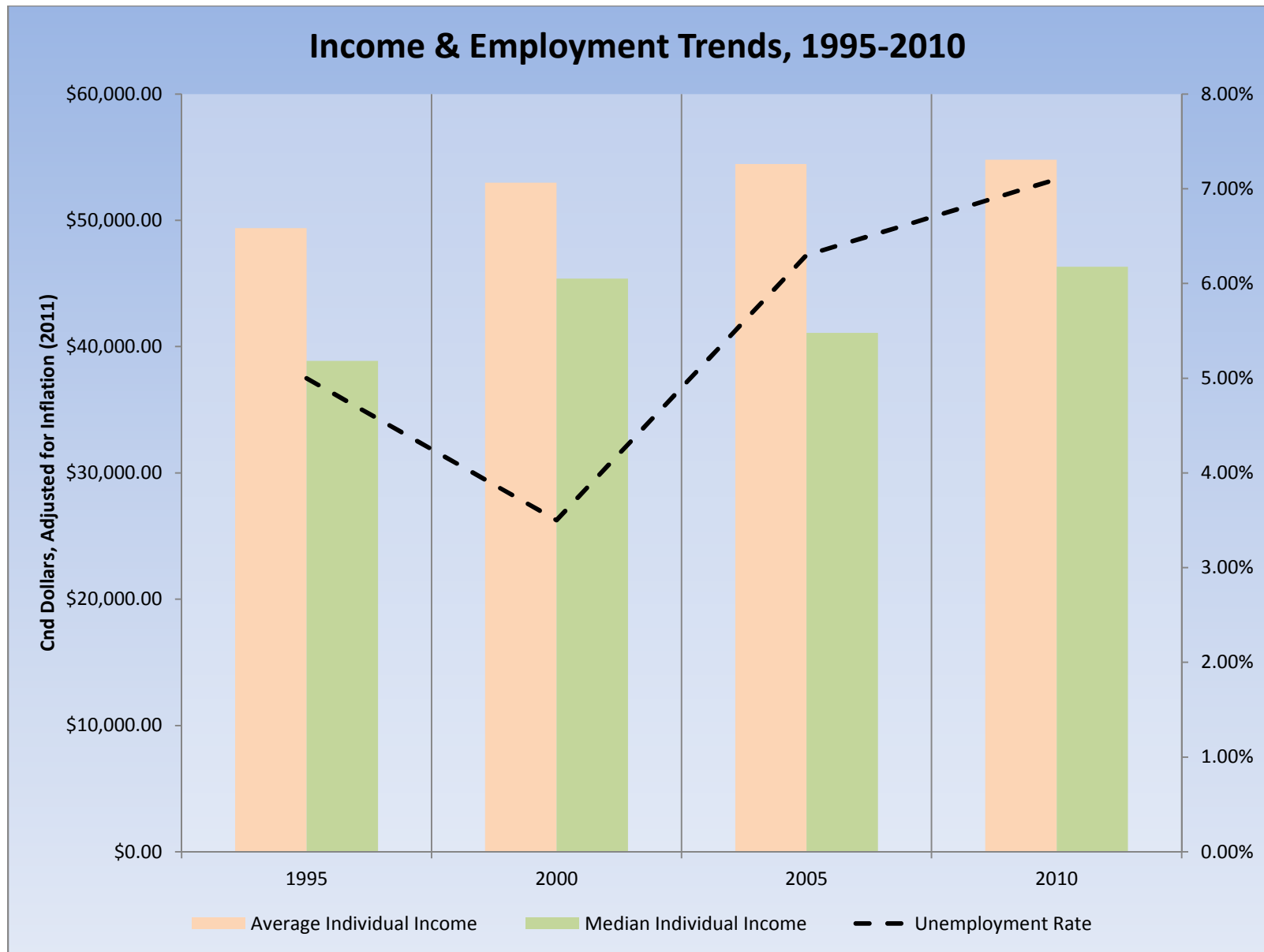


Housing by Structure Type & Tenure	1996	2001	2006	2011	Change From Previous Period	As a % of Neighbourhood
Total Occupied Dwellings	1,025	1,190	1,860	2,630	41%	
Single-Detached	890	1,025	1,625	2,050	26%	78%
Semi-Detached	10	0	10	5	(-50%)	<1%
Row House	130	160	230	440	91%	17%
Duplex	0	0	10	10	—	<1%
Apartment < 5 Storeys	0	0	0	120	100%	5%
Apartment ≥ 5 Storeys	0	0	0	0	—	0%
Number of Owned Dwellings	850	1,195	1,700	2,235	31%	85%
Owned as a % of Total	83%	90%	91%	85%		
Number of Rented Dwellings	170	120	165	400	142%	15%
Rented as a % of Total	17%	10%	9%	15%		
Average # of Rooms	8.60	8.70	8.40	7.9		
Average # of Bedrooms	3.60	3.50	3.4	N.A.	—	
Average Gross Rent	\$825.00	\$722.00	\$989.00	\$1,621.00	64%	
Average Value of Dwelling	\$242,715.00	\$230,351.00	\$329,168.00	\$371,210.00	13%	

Labour Market Indicators	1996	2001	2006	2011	Change From Previous Period		As a % of Neighbourhood
Total Labour Force ≥ 15 years	1,905	2,145	3,260	4,020	↑	23%	
Female	925	1,005	1,590	1,945	↑	22%	48%
Male	980	1,140	1,670	2,075	↑	24%	52%
Unemployment Rate	5%	3.50%	6.30%	7.10%	↑		
Female	9%	5%	7.50%	6.40%	↓		
Male	4%	2%	5%	7.70%	↑		
Employment Rate	N.A.	N.A.	N.A.	61.20%	—	—	
Participation Rate	75%	74%	72%	65.80%	↓		
Female	73%	67%	68%	61.30%	↓		
Male	77%	80%	77%	70.80%	↓		
Labour Force by Sector							
Primary (Agriculture & Resources)	0	35	75	45	↓	(-40%)	1%
Secondary (Construction & Manufacturing)	365	350	475	300	↓	(-37%)	8%
Tertiary Services	1,530	1,750	2,660	3,580	↑	35%	91%

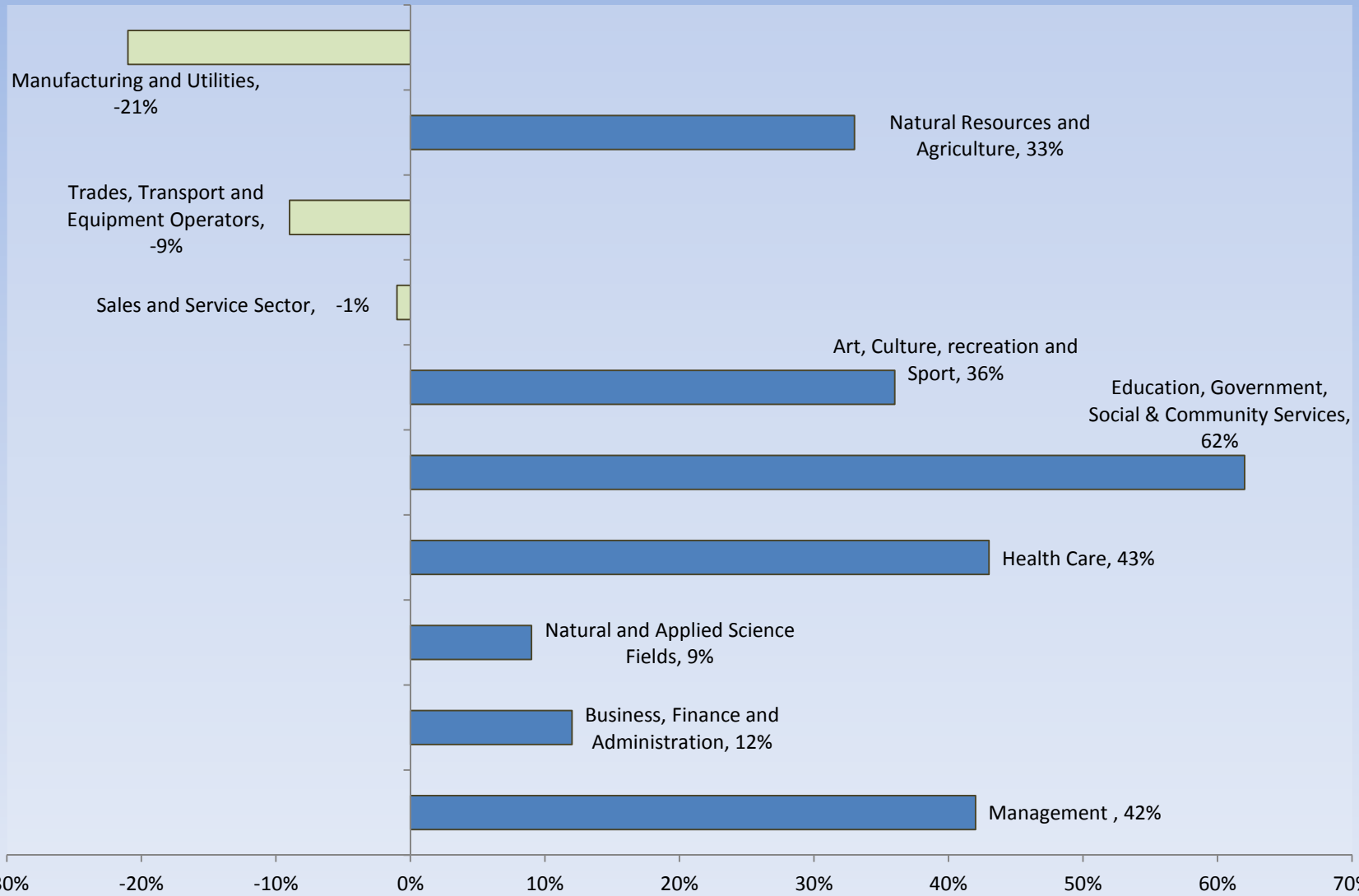
Income Characteristics of Economically Active Population	1996	2001	2006	2011	Change From Previous Period	
Individual Income						
Average Income	\$36,177.50	\$42,298.00	\$48,595.00	\$53,342.00	↑	10%
Median Income	\$28,470.00	\$36,230.00	\$36,671.00	\$45,089.00	↑	23%
Income by Gender						
Average Income – Male	\$46,464.00	\$54,766.00	\$62,911.00	\$64,407.00	↑	2%
Average Income - Female	\$25,891.00	\$29,831.00	\$35,155.00	\$43,407.00	↑	23%
Median Income – Male	\$35,905.00	\$48,522.00	\$50,772.00	\$58,822.00	↑	16%
Median Income - Female	\$21,035.00	\$23,939.00	\$31,122.00	\$39,804.00	↑	28%
Household Income						
Average Household Income	\$86,521.00	\$98,024.00	\$112,338.00	\$116,317.00	↑	4%
Median Household Income	\$77,668.00	\$90,042.00	\$98,105.00	\$106,312.00	↑	8%
Family Income						
Average Family Income	\$87,041.00	\$101,177.00	\$120,992.00	\$128,806.00	↑	6%
Median Family Income	\$77,668.00	\$92,631.00	\$104,211.00	\$119,144.00	↑	14%
Lone-Parent Families						
Average Family Income	N.A.	N.A.	N.A.	\$75,664.00		
Median Family Income	N.A.	N.A.	N.A.	\$67,001.00		

Data Note: Income figures based on previous reporting year (1995, 2000, 2005 & 2010).



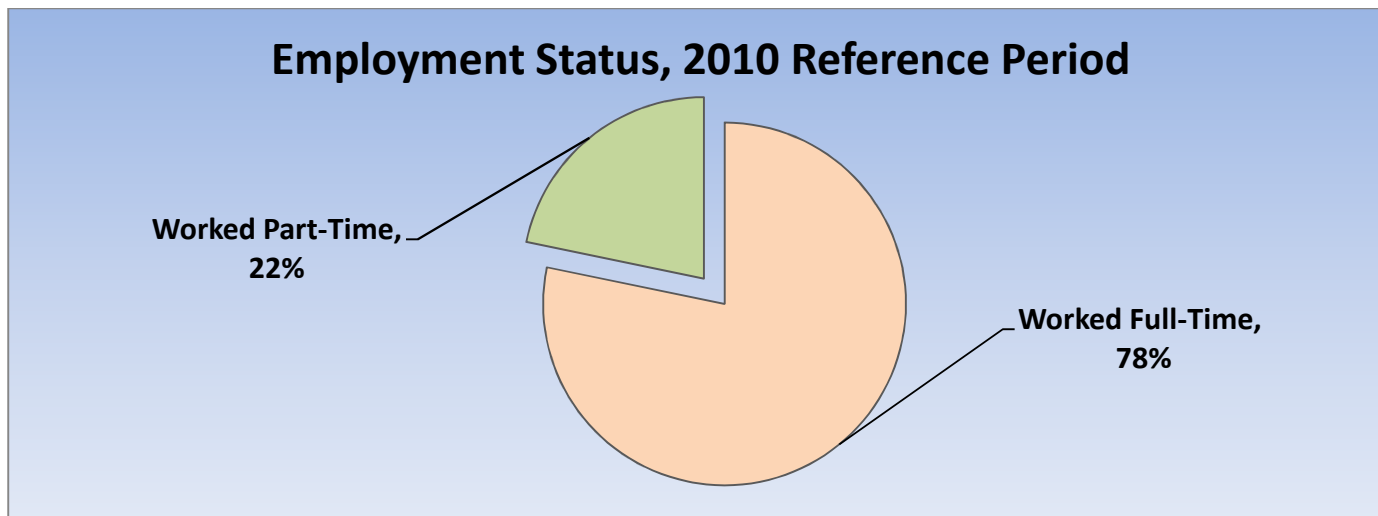
Labour Force by National Occupational Classification	1996	2001	2006	2011	Change From Previous Period	As a % of Labour Force
Management	295	365	380	540	↑ 42%	14%
Business, Finance and Administration	335	405	590	660	↑ 12%	17%
Natural and Applied Science Fields	140	190	290	360	↑ 24%	9%
Health Care	110	185	340	485	↑ 43%	12%
Education, Government, Social & Community Services	200	210	455	735	↑ 62%	19%
Art, Culture, recreation and Sport	30	35	55	75	↑ 36%	2%
Sales and Service Sector	515	475	730	725	↓ (<-1%)	18%
Trades, Transport and Equipment Operators	135	180	225	205	↓ (-9%)	5%
Natural Resources and Agriculture	25	15	30	45	↑ 33%	1%
Manufacturing and Utilities	105	65	120	95	↓ (-21%)	2%

Employment Trends by Occupational Breakout, 2006-2011



Class of Worker	1996	2001	2006	2011	Change From Previous Period	As a % Neighbourhood
Employee	1,610	1,950	2,810	3,450	↑ 23%	88%
Female	800	925	1,420	1,715		
Male	810	1,025	1,390	1,730		
Self-Employed	270	265	395	475	↑ 20%	12%
Female	110	70	145	170		
Male	160	195	250	305		

Employment Status	1996	2001	2006	2011	Change From Previous Period	As a % of Active Labour Force
Worked Full-Time in 2010	N.A.	N.A.	N.A.	2,965	N.A.	78%
Worked Part-Time in 2010	N.A.	N.A.	N.A.	825	N.A.	22%



Mode of Transport to Work	1996	2001	2006	2011	Change From Previous Period	As a % of Neighbourhood
Automobile -As a Driver	1,405	1,605	2,250	2,770	↑ 23%	81%
Car-Pool	120	140	270	275	↑ 2%	8%
Public Transportation	60	60	100	205	↑ 105%	6%
Walked or Bicycled	80	65	105	155	↑ 48%	5%
Other Modes	25	0	30	35	↑ 17%	1%
Median Commuting Duration	N.A.	N.A.	N.A.	15.9min		

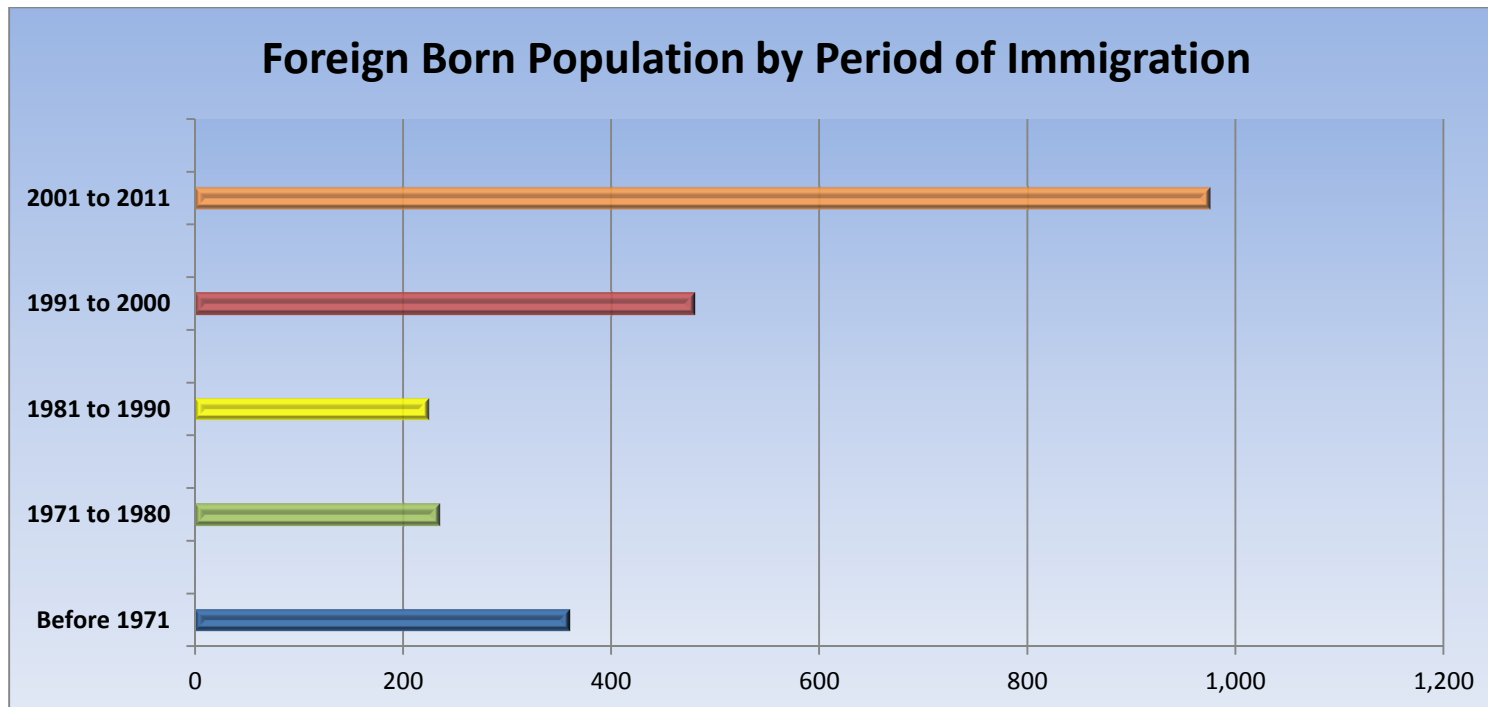
Place of Work	1996	2001	2006	2011	Change From Previous Period	As a % of Neighbourhood
Worked at Home	110	180	285	280	↓ (-2%)	8%
Worked at a Fixed Address	1,610	1,790	2,545	3,225	↑ 27%	87%
No Fixed Workplace Address	85	90	70	210	↑ 200%	6%
Worked within Municipality	1,420	1,545	2,250	N.A.	— —	
Work in a different Municipality	140	245	290	N.A.	— —	
Worked outside Canada	0	0	10	25	↑ 150%	

Mobility/Migration Status	1996	2001	2006	2011	Change From Previous Period	As a % of Neighbourhood
Lived at the same address 5 years ago	2,095	2,400	2,455	3,810	↑	53%
Moved sometime with the last 5 years	1,165	1,200	2,915	3,400	↑ 17%	47%
Internal Migrants	255	425	500	895	↑ 79%	68%
- Intra-provincial	190	340	370	690	↑	
- Inter-provincial	65	85	135	205	↑	
External Migrants	95	90	370	420	↑ 14%	32%
Lived at the same address 1 years ago	3,110	3,280	4,715	6,650	↑ 41%	87%
Moved sometime with the last year	350	475	945	1,000	↑ 6%	13%
Internal Migrants	120	180	170	285	↑ 68%	67%
- Intra-provincial	105	160	160	250	↑ 56%	
- Inter-provincial	10	25	10	35	↑ 250%	
External Migrants	15	15	45	140	↑ 238%	33%

Place of Birth	1996	2001	2006	2011	Change From Previous Period		As a % of Neighbourhood
Total Immigrant Population	N.A.	N.A.	1,750	2,265	↑	29%	29%
Place of Birth by Continent							
North America (US only)	N.A.	N.A.	45	75	↑	67%	1%
Africa	N.A.	N.A.	115	160	↑	39%	2%
Asia	N.A.	N.A.	810	1,185	↑	46%	15%
Caribbean	N.A.	N.A.	0	50	↑	100%	1%
Central and South America	N.A.	N.A.	45	50	↑	11%	1%
Europe	N.A.	N.A.	735	685	↓	(-7%)	9%
Recent Immigration by Continent, 2006-2011							
Recent Immigrants	N.A.	N.A.	375	390	↑	4%	5%
North America (US only)	N.A.	N.A.	10	N.A.	—		
Africa	N.A.	N.A.	55	N.A.	—		
Asia	N.A.	N.A.	285	225	↓	(-21%)	3%
Caribbean	N.A.	N.A.	0	N.A.	—		
Central and South America	N.A.	N.A.	0	N.A.	—		
Europe	N.A.	N.A.	20	20	—		<1%

Immigration by Place of Birth	1996	2001	2006	2011	Change From Previous Period		As a % of Neighbourhood
1. China	N.A.	N.A.	165	305	↑	85%	4%
2. South Korea	N.A.	N.A.	N.A.	225	—	—	3%
3. India	N.A.	N.A.	135	165	↑	18%	2%
4. United Kingdom	N.A.	N.A.	145	130	↓	(-10%)	2%
5. Italy	N.A.	N.A.	110	110	—	—	2%
6. United States	N.A.	N.A.	N.A.	75			1%
7. Mexico	N.A.	N.A.	N.A.	60			1%
8. Sri Lanka	N.A.	N.A.	N.A.	60			1%
9. Pakistan	N.A.	N.A.	N.A.	50			<1%
10. NA	N.A.	N.A.	N.A.	N.A.			

Period of Immigration	1996	2001	2006	2011	Change From Previous Period	As a % of Neighbourhood
Before 1971	N.A.	N.A.	415	360	↓ (-13%)	5%
1971 to 1980	N.A.	N.A.	280	235	↓ (-16%)	3%
1981 to 1990	N.A.	N.A.	195	225	↑ 15%	3%
1991 to 2000	N.A.	N.A.	490	480	↓ (-2%)	6%
2001 to 2011	N.A.	N.A.	N.A.	975		12%



Language	1996	2001	2006	2011	Change From Previous Period		As a % of Neighbourhood
Knowledge of Official Languages							
English Only	3,205	3,355	5,065	6,970	↑	38%	89%
French Only	0	0	0	5	↑	100%	<1%
English and French	255	390	570	625	↑	10%	8%
Neither English or French	15	20	70	125	↑	79%	2%
Language Spoken Most Often at Home							
English	3,130	3,055	4,640	6,250	↑	35%	80%
French	15	0	25	20	↓	(-20%)	<1%
Non-Official Language	265	155	930	1,120	↑	20%	14%
Mother Tongue *							
English	2,815	2,805	3,720	5,310	↑	43%	68%
French	25	60	90	80	↓	(-11%)	1%
Non-Official Language	560	860	1,855	2,190	↑	18%	28%

* Statistics Canada defines 'mother tongue' as the first language learned in childhood and still understood by the individual at the time of census reporting.

Non-Official Languages Spoken Top 10 Reported	1996	2001	2006	2011	Change From Previous Period		As a % of Neighbourhood
1. Chinese*	N.A.	N.A.	265	445	↑	68%	6%
2. Arabic	N.A.	N.A.	365	270	↓	(-26%)	3%
3. Korean	N.A.	N.A.	N.A.	240	—	—	3%
4. Italian	N.A.	N.A.	185	175	↓	(-5%)	2%
5. Spanish	N.A.	N.A.	130	165	↑	27%	2%
6. Polish	N.A.	N.A.	140	145	↑	4%	2%
7. Russian	N.A.	N.A.	N.A.	135	—	—	2%
8. Greek	N.A.	N.A.	120	105	↓	(-13%)	1%
9. German	N.A.	N.A.	N.A.	100	—	—	1%
10. Malayalam	N.A.	N.A.	N.A.	90	—	—	1%

* Refers to Cantonese and Mandarin language speakers as well as others who do not specify otherwise.

Religious Identification	1996	2001	2006	2011	Change From Previous Period	As a % of Neighbourhood
Buddhist	N.A.	N.A.	N.A.	65		1%
Christian	N.A.	N.A.	N.A.	4,885		62%
Anglican	N.A.	N.A.	N.A.	530		7%
Baptist	N.A.	N.A.	N.A.	140		7%
Catholic	N.A.	N.A.	N.A.	2,145		27%
Orthodox	N.A.	N.A.	N.A.	225		3%
Lutheran	N.A.	N.A.	N.A.	205		3%
Pentecostal	N.A.	N.A.	N.A.	80		1%
Presbyterian	N.A.	N.A.	N.A.	285		4%
United Church	N.A.	N.A.	N.A.	860		11%
Other Christian	N.A.	N.A.	N.A.	415		5%
Hindu	N.A.	N.A.	N.A.	125		2%
Jewish	N.A.	N.A.	N.A.	45		1%
Muslim	N.A.	N.A.	N.A.	515		7%
Sikh	N.A.	N.A.	N.A.	0		0%
Aboriginal Spirituality	N.A.	N.A.	N.A.	0		0%

Notes:

- (1) Source Data –Statistics Canada. 1996-2011 Census Data, Customized Profiles. Ottawa, Canada
- (2) Data also derived from Statistics Canada’s National Household Survey (NHS)
- (3) Customized Community and Neighbourhood Profiles tabulated and compiled by the City of London’s Planning Division –Policy Planning and Research Section.