



Stoney Creek Neighbourhood Profile

For further information contact:

John-Paul Sousa

Planning Research Analyst

Direct: (519) 661-2500 ext. 5989 | email: jpsousa@london.ca

Date Created: Jan. 2014

Neighbourhood Profile -Stoney Creek Planning District



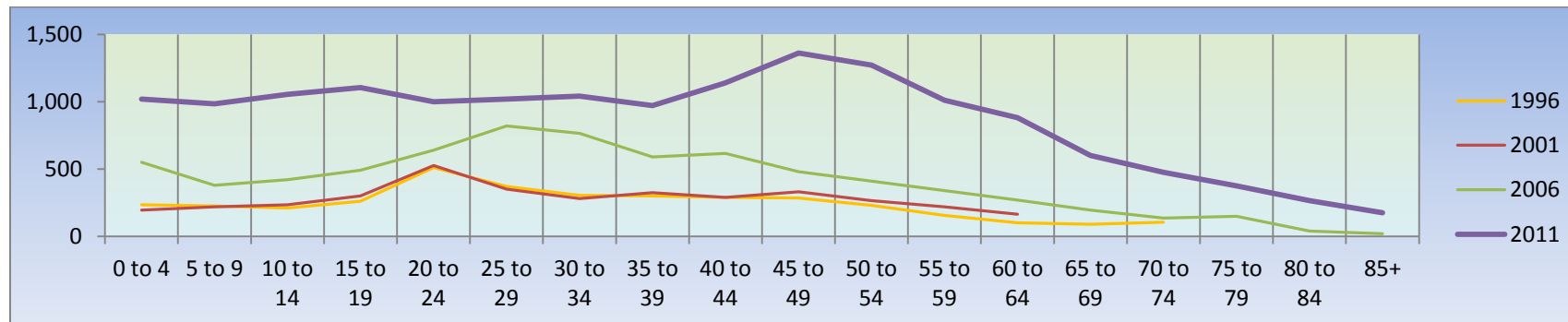
Coordinate System: NAD 1983 UTM Zone 17N
Projection: Transverse Mercator
Datum: North American 1983

Population Characteristics & Age Distribution

Stoney Creek Neighbourhood	1996	2001	2006	2011	Change From Previous Period	
Total Population	3,750	4,050	7,310	9,680	↑	32%
Female	1,950	2,130	3,760	5,020	↑	34%
Male	1,800	1,920	3,550	4,665	↑	31%

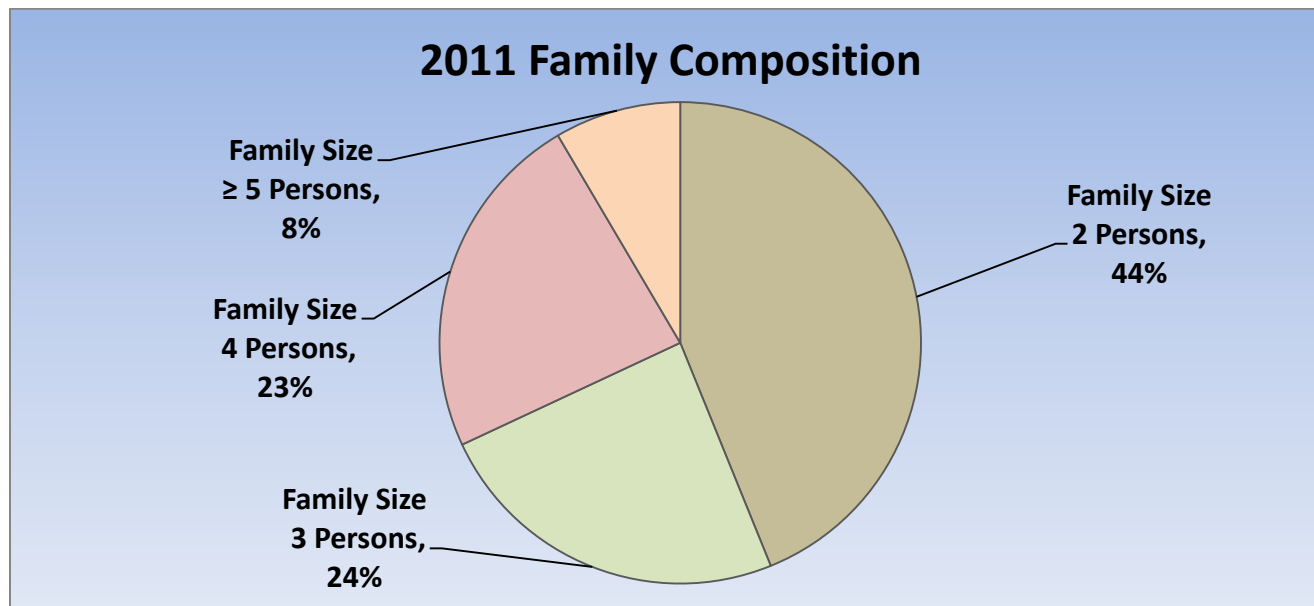
Age Structure	1996	2001	2006	2011	Change From Previous Period		As a % of Neighbourhood
0-19	930	950	1,840	2,615	↑	42%	27%
0 to 4	235	195	550	775	↑	41%	8%
5 to 9	225	220	380	585	↑	54%	6%
10 to 14	210	235	420	575	↑	37%	6%
15 to 19	260	300	490	680	↑	39%	7%
20-44	1,775	1,770	3,430	3,975	↑	16%	41%
45-64	770	980	1,500	2,260	↑	51%	23%
65+	280	340	540	825	↑	53%	9%
Median Age	N.A.	N.A.	N.A.	34.4			

2011 Census Age Cohort Breakout	Male	Female	Total	As a % of Neighbourhood
0 to 4	390	385	775	8.01%
5 to 9	285	300	585	6.05%
10 to 14	295	280	575	5.95%
15 to 19	340	340	680	7.03%
20 to 24	335	360	695	7.19%
25 to 29	345	355	700	7.24%
30 to 34	435	500	935	9.67%
35 to 39	445	455	900	9.31%
40 to 44	345	390	735	7.60%
45 to 49	385	385	770	7.96%
50 to 54	250	330	580	6.00%
55 to 59	230	265	495	5.12%
60 to 64	205	215	420	4.34%
65 to 69	135	170	305	3.15%
70 to 74	85	110	195	2.02%
75 to 79	70	80	150	1.55%
80 to 84	45	65	110	1.14%
85+	30	35	65	0.67%
Total	4,650	5,020	9,670	



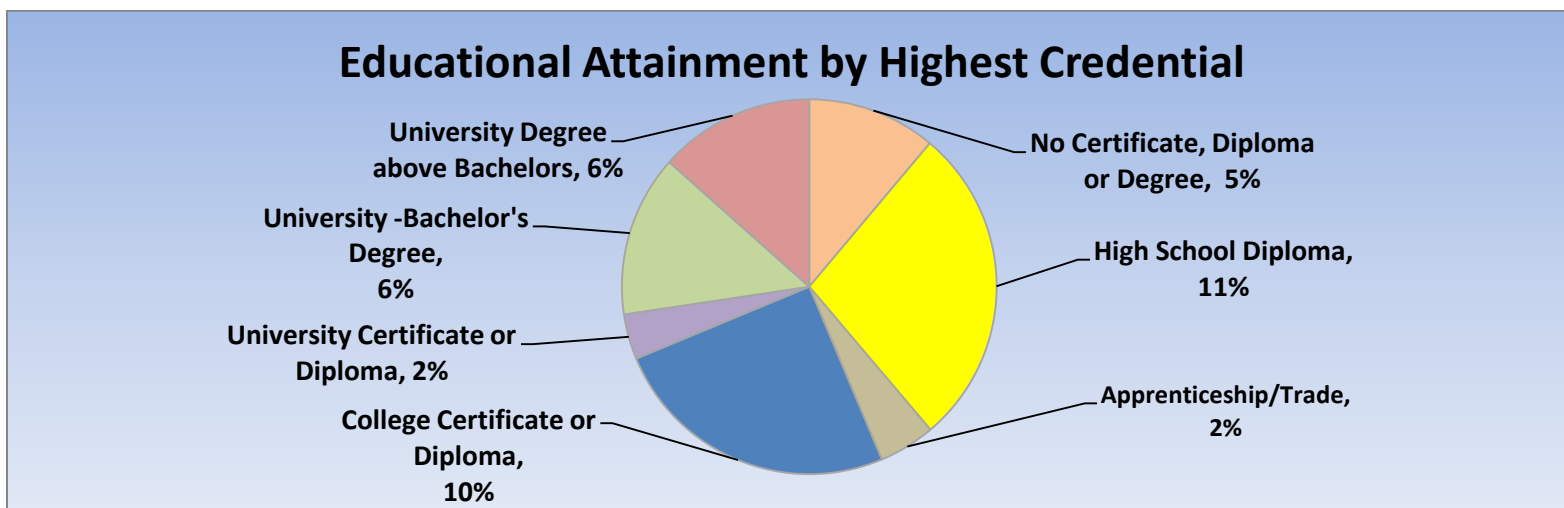
Marital Status	1996	2001	2006	2011	Change From Previous Period	As a % of Neighbourhood
Single	1,190	1,300	2,020	2,080	↑ 3%	21%
Married	1,400	1,570	3,165	4,165	↑ 32%	43%
Common-Law	260	295	545	580	↑ 6%	6%
Divorced	240	240	395	425	↑ 8%	4%
Separated	125	135	190	245	↑ 29%	3%
Widowed	125	145	185	255	↑ 38%	3%
Citizenship, Immigration & Ethnic Identity	1996	2001	2006	2011	Change From Previous Period	As a % of Neighbourhood
Citizenship						
Canadian Citizens	3,55	3,685	6,875	9,155	↑ 33%	95%
Non-Canadian Citizens	190	365	435	550	↑ 26%	6%
Immigration Status						
Canadian Born Population	3,140	4,050	5,725	7,180	↑ 25%	74%
Foreign Born Population	585	850	1,520	2,460	↑ 62%	25%
Visible Minority Population	360	540	1,065	2,380	↑ 123%	25%
Aboriginal Identity Population	30	10	45	235	↑ 422%	2%

Family Composition	1996	2001	2006	2011	Change From Previous Period	As a % of Neighbourhood
Number of Census Families	1,005	1,145	2,165	2,770	↑ 28%	
Family Size - 2 Persons	480	635	1,020	1,215	↑ 19%	44%
Family Size - 3 Persons	215	190	520	670	↑ 29%	24%
Family Size - 4 Persons	240	230	495	650	↑ 31%	23%
Family Size - ≥ 5 Persons	75	90	135	235	↑ 74%	8%
Census Family - Average Size	3.00	3.00	3.00	3.00	↑	



Family Structure & Number of Children	1996	2001	2006	2011	Change From Previous Period	
Married Couples	695	765	1,565	2,040	↑	30%
Without Children	255	320	635	745	↑	17%
With Children	440	440	635	1,300	↑	105%
Common-Law	130	150	270	290	↑	7%
Without Children	80	140	190	200	↑	5%
With Children	45	10	80	90	↑	13%
Lone Parent Families	185	235	325	435	↑	34%
Female Headed	160	190	225	370	↑	64%
1 Child	120	140	120	230	↑	8%
2 Children	30	35	85	110	↑	29%
≥ 3 Children	10	15	25	25	–	
Male Headed	25	40	95	70	↓	(-26%)
1 Child	20	30	70	45	↓	(-36%)
2 Children	5	10	10	20	↑	100%
≥ 3 Children	0	0	15	10	↓	33%

Educational Attainment by Credential	1996	2001	2006	2011	Change From Previous Period	As a % of Neighbourhood
No Certificate, Diploma or Degree	N.A.	N.A.	905	870	↓ (-4%)	5%
High School Diploma or Equivalent	N.A.	N.A.	1,555	2,165	↑ 39%	11%
Apprenticeship, or Trade Certificate	105	245	280	380	↑ 36%	2%
College Certificate or Diploma	N.A.	625	1,260	1,960	↑ 56%	10%
University Certificate or Diploma	N.A.	N.A.	30	305	↑ 917%	2%
University -Bachelor's Degree	N.A.	N.A.	1,055	1,090	↑ 3%	6%
University Degree above bachelor level (M.A. or PhD)	N.A.	N.A.	330	1,050	↑ 218%	6%

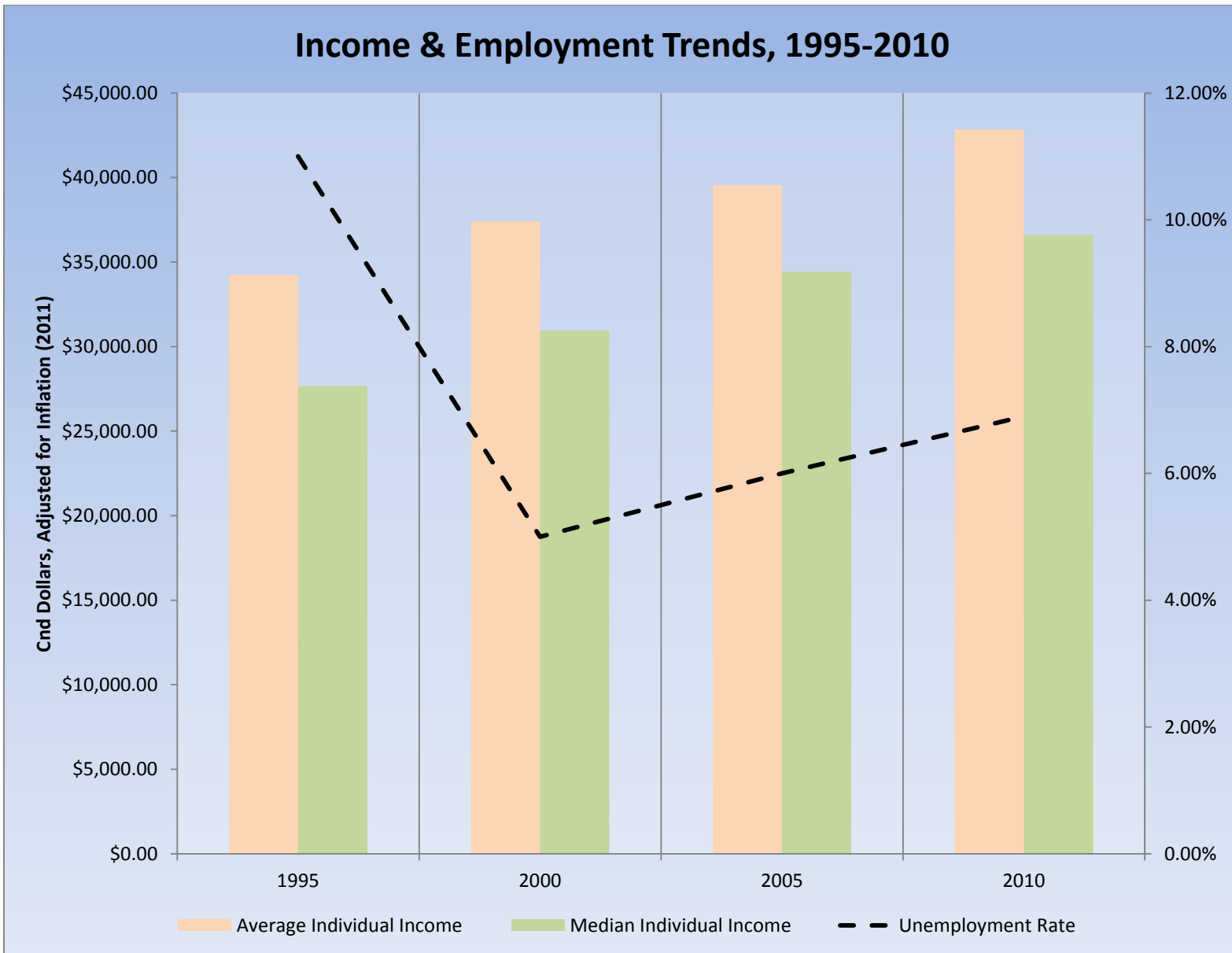


Housing by Structure Type & Tenure	1996	2001	2006	2011	Change From Previous Period	As a % of Neighbourhood
Total Occupied Dwellings	1,605	1,815	3,005	3,815	↑ 27%	
Single-Detached	575	580	1,645	2,140	↑ 30%	56%
Semi-Detached	0	0	0	5	↑ 100%	<1%
Row House	80	195	280	515	↑ 84%	13%
Duplex	0	0	10	15	↑ 50%	<1%
Apartment < 5 Storeys	95	120	280	125	↓ (-55%)	3%
Apartment ≥ 5 Storeys	855	920	1,000	1,015	↑ 2%	27%
Number of Owned Dwellings	640	740	1,875	2,665	↑ 42%	
Owned as a % of Total	40%	41%	62%	70%	↑	
Number of Rented Dwellings	965	1,075	1,135	1,165	↑ 3%	
Rented as a % of Total	60%	59%	38%	30%	↓	
Average # of Rooms	6	6	6	6.5	↑	
Average # of Bedrooms	2	2	3	N.A.	-	
Average Gross Rent	\$614.00	\$633.00	\$757.00	\$827.00	↑ 9%	
Average Value of Dwelling	\$166,505.00	\$164,399.00	\$223,014.00	\$281,711.00	↑ 26%	

Labour Market Indicators	1996	2001	2006	2011	Change From Previous Period		As a % of Neighbourhood
Total Labour Force ≥ 15 years	2,160	2,375	4,430	5,785	↑	31%	
Female	1,040	1,160	2,255	2,970	↑	32%	51%
Male	1,120	1,215	2,175	2,820	↑	30%	49%
Unemployment Rate	11%	5%	6%	6.90%	↑		
Female	8.00%	6.00%	7.00%	7.40%	↑		
Male	13.00%	5.00%	6.00%	6.40%	↑		
Employment Rate	N.A.	N.A.	N.A.	68.80%	–		
Participation Rate	70%	70%	74%	73.9%	↓		
Female	64%	65%	73%	72.40%	↓		
Male	77%	76%	76%	75.70%	↓		
Labour Force by Sector							
Primary (Agriculture & Resources)	15	35	45	85	↑	89%	1%
Secondary (Construction & Manufacturing)	305	385	740	1,005	↑	36%	18%
Tertiary Services	1,505	1,945	4,265	4,600	↑	8%	81%

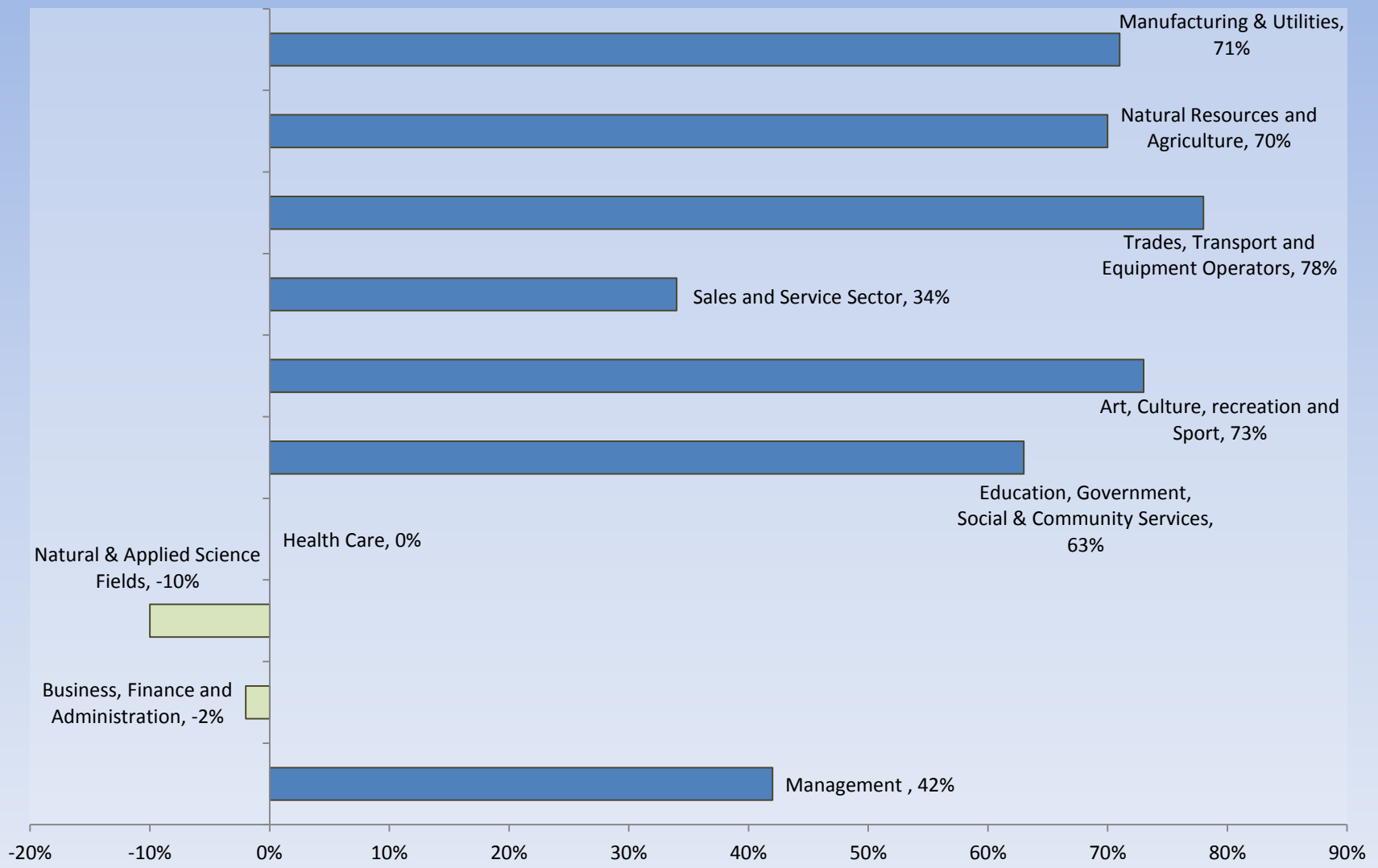
Income Characteristics of Economically Active Population	1996	2001	2006	2011	Change From Previous Period	
Individual Income						
Average Income	\$25,009.50	\$29,507.00	\$35,194.00	\$41,491.00	↑	18%
Median Income	\$20,202.50	\$24,414.00	\$30,646.00	\$35,427.00	↑	16%
Income by Gender						
Average Income – Male	\$29,432.00	\$34,318.00	\$42,132.00	\$48,549.00	↑	15%
Average Income - Female	\$20,587.00	\$24,696.00	\$28,805.00	\$35,068.00	↑	22%
Median Income – Male	\$24,956.00	\$29,671.00	\$38,927.00	\$41,968.00	↑	8%
Median Income - Female	\$15,449.00	\$19,157.00	\$24,899.00	\$32,020.00	↑	29%
Household Income						
Average Household Income	\$44,682.00	\$51,347.00	\$66,526.00	\$79,866.00	↑	20%
Median Household Income	\$36,920.00	\$42,010.00	\$60,984.00	\$72,040.00	↑	18%
Family Income						
Average Family Income	\$50,038.00	\$64,404.00	\$76,837.00	\$93,442.00	↑	22%
Median Family Income	\$55,260.00	\$59,600.00	\$75,067.00	\$88,002.00	↑	17%
Lone-Parent Families						
Average Family Income	N.A.	N.A.	N.A.	\$48,363.00	—	
Median Family Income	N.A.	N.A.	N.A.	\$41,049.00	—	

Data Note: Income figures based on previous reporting year (1995, 2000, 2005 & 2010).



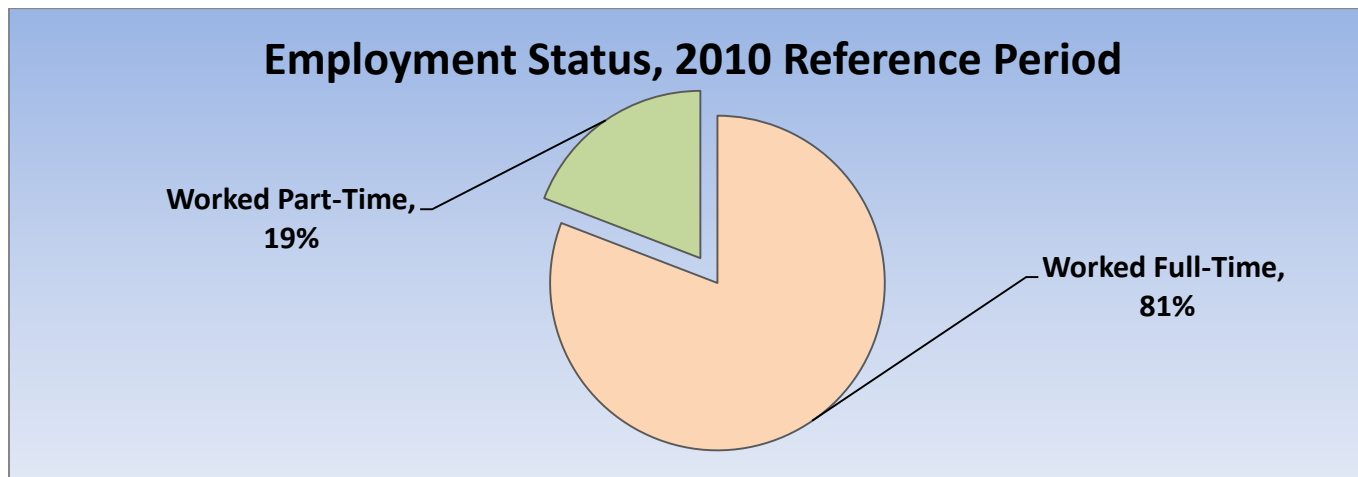
Labour Force by National Occupational Classification	1996	2001	2006	2011	Change From Previous Period		As a % of Labour Force
Management	160	225	430	610	↑	42%	11%
Business, Finance and Administration	455	495	905	890	↓	(-2%)	16%
Natural and Applied Science Fields	110	215	345	310	↓	(-10%)	5%
Health Care	135	115	425	425	—	—	7%
Education, Government, Social & Community Services	255	250	550	895	↑	63%	16%
Art, Culture, recreation and Sport	35	70	75	130	↑	73%	2%
Sales and Service Sector	620	570	1,000	1,340	↑	34%	24%
Trades, Transport and Equipment Operators	165	265	385	685	↑	78%	12%
Natural Resources and Agriculture	35	25	50	85	↑	70%	1%
Manufacturing and Utilities	105	110	190	325	↑	71%	6%

Employment Trends by Occupational Breakout, 2006-2011



Class of Worker	1996	2001	2006	2011	Change From Previous Period	As a % Neighbourhood
Employee	1,945	2,160	4,045	5,360	↑ 33%	94%
Female	985	1,070	2,095	2,795		
Male	960	1,090	1,950	2,565		
Self-Employed	140	175	315	315	— —	6%
Female	20	70	130	120		
Male	120	105	185	195		

Employment Status	1996	2001	2006	2011	Change From Previous Period	As a % of Active Labour Force
Worked Full-Time in 2010	N.A.	N.A.	N.A.	4,450	N.A.	81%
Worked Part-Time in 2010	N.A.	N.A.	N.A.	1,055	N.A.	19%



Mode of Transport to Work	1996	2001	2006	2011	Change From Previous Period	As a % of Neighbourhood
Automobile -As a Driver	1,530	1,605	3,165	4,130	↑ 30%	83%
Car-Pool	115	165	320	290	↓ (-9%)	6%
Public Transportation	140	225	325	385	↑ 18%	8%
Walked or Bicycled	10	70	115	180	↑ 57%	4%
Other Modes	0	10	20	20	— —	<1%
Median Commuting Duration	N.A.	N.A.	N.A.	20 min.		

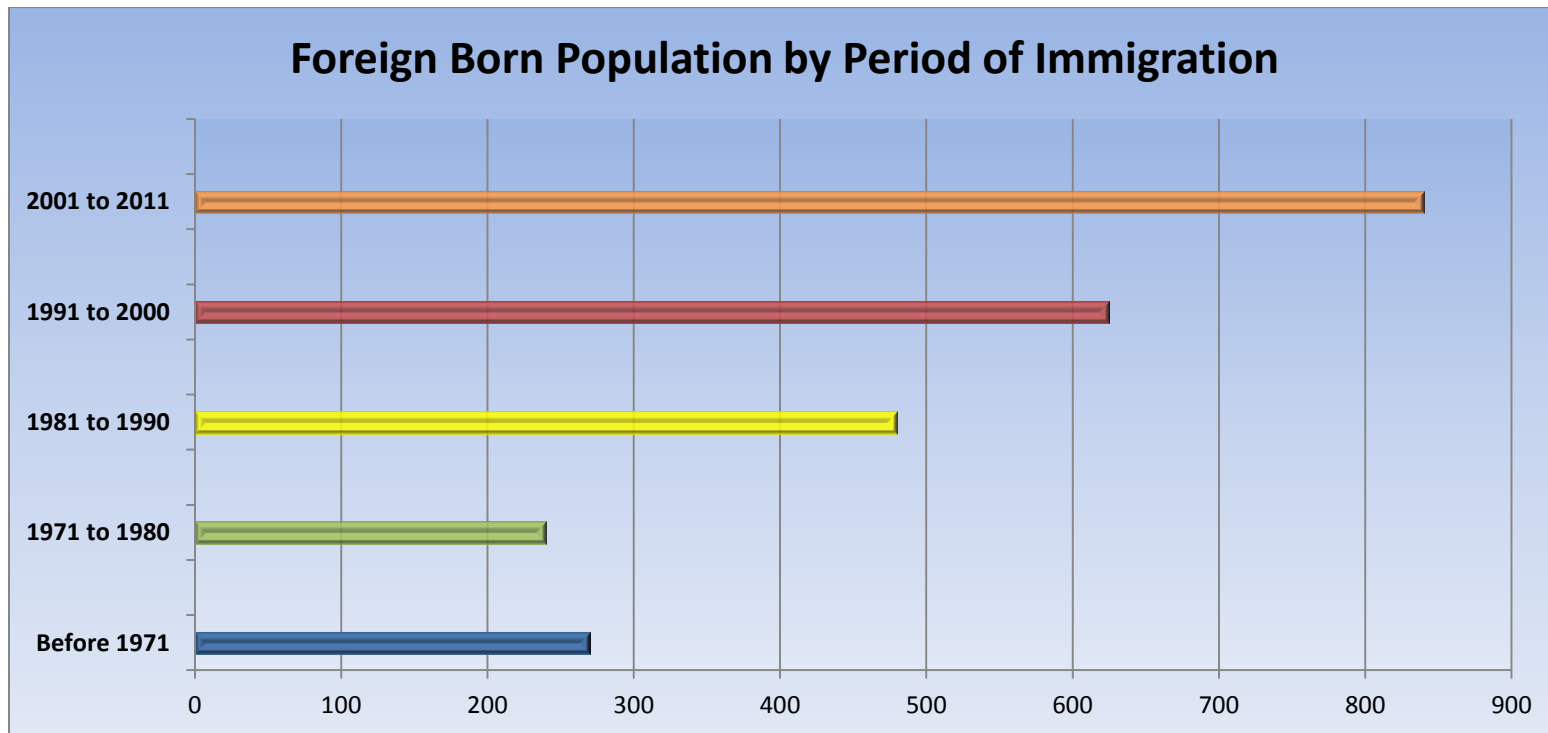
Place of Work	1996	2001	2006	2011	Change From Previous Period	As a % of Neighbourhood
Worked at Home	115	140	185	350	↑ 89%	7%
Worked at a Fixed Address	1,715	1,865	3,640	4,520	↑ 24%	84%
No Fixed Workplace Address	105	205	305	485	↑ 59%	9%
Worked within Municipality	1,535	1,660	3,215	N.A.	— —	
Work in a different Municipality	95	205	435	N.A.	— —	
Worked outside Canada	0	30	30	30	— —	<1%

Mobility/Migration Status	1996	2001	2006	2011	Change From Previous Period	As a % of Neighbourhood
Lived at the same address 5 years ago	1,645	1,650	1,960	3,830	↑	43%
Moved sometime with the last 5 years	1,865	2,205	4,800	5,110	↑ (6%)	57%
Internal Migrants	810	755	1,780	1,500	↓ (-16%)	73%
- Intra-provincial	710	610	1,195	1,280	↑	
- Inter-provincial	100	150	145	220	↑	
External Migrants	120	255	445	545	↑ (22%)	27%
Lived at the same address 1 years ago	2,835	3,065	5,410	7,760	↑ 43%	82%
Moved sometime with the last year	875	950	1,750	1,755	↑ <1%	18%
Internal Migrants	250	320	455	440	↓ (-3%)	86%
- Intra-provincial	230	275	440	345	↓ (-22%)	
- Inter-provincial	20	45	10	95	↑ 850%	
External Migrants	30	100	105	70	↓ (-33%)	14%

Place of Birth	1996	2001	2006	2011	Change From Previous Period		As a % of Neighbourhood
Total Immigrant Population	N.A.	N.A.	1,520	2,455	↑	62%	25%
Place of Birth by Continent							
North America (US only)	N.A.	N.A.	40	50	↑	25%	1%
Africa	N.A.	N.A.	75	180	↑	140%	2%
Asia	N.A.	N.A.	625	1,020	↑	63%	11%
Caribbean	N.A.	N.A.	30	50	↑	67%	1%
Central and South America	N.A.	N.A.	140	180	↑	29%	2%
Europe	N.A.	N.A.	605	885	↑	46%	9%
Recent Immigration by Continent, 2006-2011							
Recent Immigrants	N.A.	N.A.	365	385	↑	5%	4%
North America (US only)	N.A.	N.A.	0	0	—	—	0%
Africa	N.A.	N.A.	35	70	↑	100%	1%
Asia	N.A.	N.A.	275	210	↓	(-24%)	2%
Caribbean	N.A.	N.A.	10	0	↓	(-100%)	0%
Central and South America	N.A.	N.A.	80	35	↓	(-56%)	<1%
Europe	N.A.	N.A.	10	45	↑	350%	<1%

Immigration by Place of Birth	1996	2001	2006	2011	Change From Previous Period		As a % of Neighbourhood
1. India	N.A.	N.A.	100	240	↑	140%	2%
2. China	N.A.	N.A.	215	220	↑	2%	2%
3. Poland	N.A.	N.A.	80	180	↑	125%	2%
4. South Korea	N.A.	N.A.	N.A.	165	↑		2%
5. Colombia	N.A.	N.A.	70	145	↑	107%	1%
6. United Kingdom	N.A.	N.A.	200	130	↓	35%	1%
7. Portugal	N.A.	N.A.	N.A.	105	↑		1%
8. Viet Nam	N.A.	N.A.	N.A.	90	↑		<1%
9. Bosnia & Herzegovina	N.A.	N.A.	N.A.	85	↑		<1%
10. Philippines	N.A.	N.A.	N.A.	70	↑		<1%

Period of Immigration	1996	2001	2006	2011	Change From Previous Period	As a % of Neighbourhood
Before 1971	N.A.	N.A.	215	270	↑ 26%	3%
1971 to 1980	N.A.	N.A.	200	240	↑ 20%	2%
1981 to 1990	N.A.	N.A.	100	480	↑ 380%	5%
1991 to 2000	N.A.	N.A.	80	625	↑ 681%	6%
2001 to 2011	N.A.	N.A.	70	840	↑ 1,100%	9%



Language	1996	2001	2006	2011	Change From Previous Period		As a % of Neighbourhood
Knowledge of Official Languages							
English Only	3,450	3,610	6,700	8,835	↑	32%	91%
French Only	0	0	0	0	–	–	0%
English and French	285	370	510	690	↑	35%	7%
Neither English or French	20	75	105	160	↑	52%	2%
Language Spoken Most Often at Home							
English	3,420	3,295	6,250	7,740	↑	24%	80%
French	0	15	0	45	↑	100%	<1%
Non-Official Language	265	340	930	1,435	↑	54%	15%
Mother Tongue *							
English	3,205	3,080	5,610	6,765	↑	21%	70%
French	50	70	40	120	↑	200%	1%
Non-Official Language	480	885	1,570	2,595	↑	65%	27%

* Statistics Canada defines 'mother tongue' as the first language learned in childhood and still understood by the individual at the time of census reporting.

Non-Official Languages Spoken Top 10 Reported	1996	2001	2006	2011	Change From Previous Period		As a % of Neighbourhood
1. Spanish	N.A.	80	205	360	↑	76%	4%
2. Chinese*	N.A.	N.A.	230	350	↑	52%	4%
3. Korean	N.A.	545	130	215	↑	65%	2%
4. Polish	N.A.	N.A.	145	215	↑	48%	2%
5. Vietnamese	N.A.	N.A.	N.A.	200	↑	100%	2%
6. Panjabi (Punjabi)	N.A.	N.A.	N.A.	195	↑	100%	2%
7. Portuguese	N.A.	N.A.	80	185	↑	135%	2%
8. Arabic	N.A.	N.A.	135	145	↑	7%	1%
9. Italian	N.A.	N.A.	120	140	↑	17%	1%
10. Hindi	N.A.	N.A.	120	100	↓	(-16%)	1%

* Refers to Cantonese and Mandarin language speakers as well as others who do not specify otherwise.

Religious Identification	1996	2001	2006	2011	Change From Previous Period	As a % of Neighbourhood
Buddhist	N.A.	N.A.	N.A.	180		2%
Christian	N.A.	N.A.	N.A.	5,945		61%
Anglican	N.A.	N.A.	N.A.	435		4%
Baptist	N.A.	N.A.	N.A.	235		2%
Catholic	N.A.	N.A.	N.A.	3,275		34%
Orthodox	N.A.	N.A.	N.A.	125		1%
Lutheran	N.A.	N.A.	N.A.	135		1%
Pentecostal	N.A.	N.A.	N.A.	135		1%
Presbyterian	N.A.	N.A.	N.A.	200		2%
United Church	N.A.	N.A.	N.A.	755		8%
Other Christian	N.A.	N.A.	N.A.	665		7%
Hindu	N.A.	N.A.	N.A.	150		2%
Jewish	N.A.	N.A.	N.A.	65		1%
Muslim	N.A.	N.A.	N.A.	375		4%
Sikh	N.A.	N.A.	N.A.	140		1%
Aboriginal Spirituality	N.A.	N.A.	N.A.	0		0%

Notes:

- (1) Source Data –Statistics Canada. 1996-2011 Census Data, Customized Profiles. Ottawa, Canada
- (2) Data also derived from Statistics Canada’s National Household Survey (NHS)
- (3) Customized Community and Neighbourhood Profiles tabulated and compiled by the City of London’s Planning Division –Policy Planning and Research Section.