



# Riverbend Neighbourhood Profile

For further information contact:

John-Paul Sousa

Planning Research Analyst

Direct: (519) 661-2500 ext. 5989 | email: [jpsousa@london.ca](mailto:jpsousa@london.ca)

Date Created: Jan. 2014

### Neighbourhood Profile -River Bend Planning District



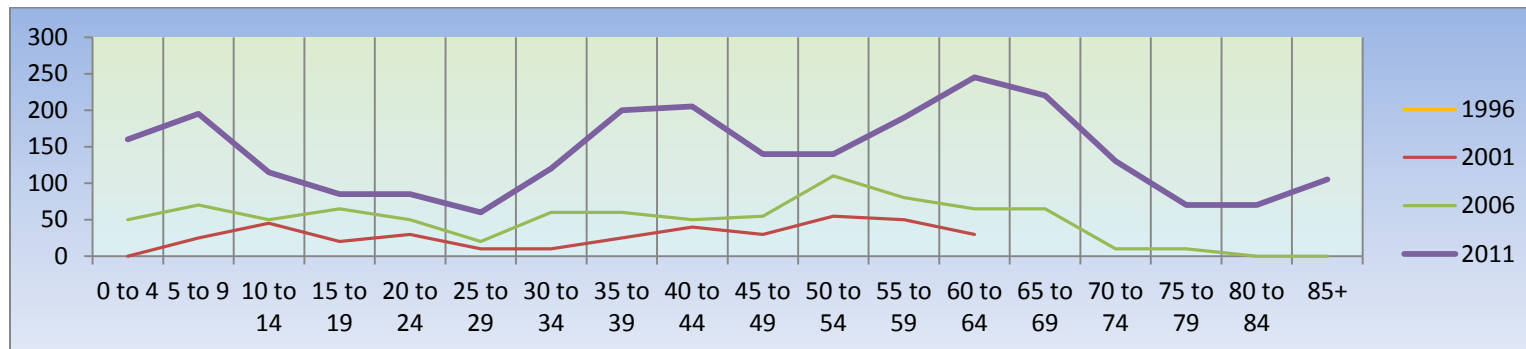
Coordinate System: NAD 1983 UTM Zone 17N  
Projection: Transverse Mercator  
Datum: North American 1983

## Population Characteristics & Age Distribution

Riverbend Neighbourhood	1996	2001	2006	2011	Change From Previous Period	
<b>Total Population</b>	<b>40</b>	<b>465</b>	<b>870</b>	<b>2,520</b>	<b>↑</b>	<b>190%</b>
Female	N.A.	235	415	1,325	↑	219%
Male	N.A.	230	455	1,200	↑	164%

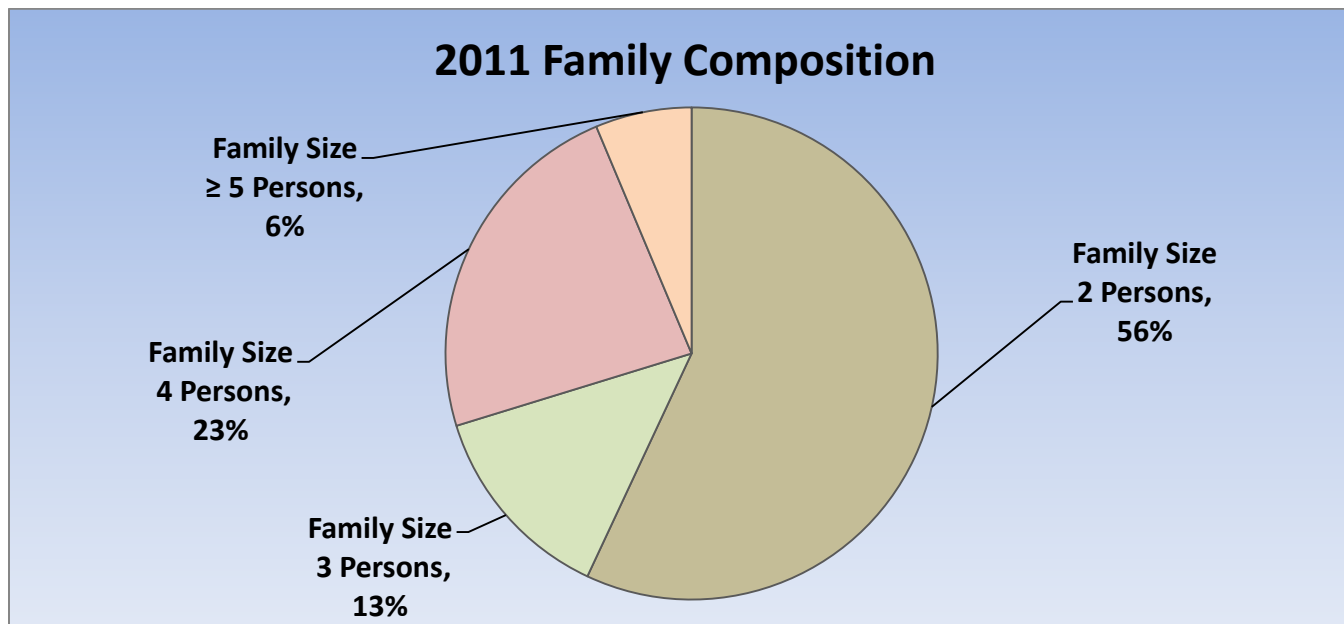
Age Structure	1996	2001	2006	2011	Change From Previous Period		As a % of Neighbourhood
<b>0-19</b>	<b>N.A.</b>	<b>90</b>	<b>235</b>	<b>555</b>	<b>↑</b>	<b>136%</b>	<b>22%</b>
0 to 4	N.A.	0	50	165	↑	230%	7%
5 to 9	N.A.	25	70	195	↑	179%	8%
10 to 14	N.A.	45	50	115	↑	130%	5%
15 to 19	N.A.	20	65	80	↑	23%	3%
<b>20-44</b>	<b>N.A.</b>	<b>115</b>	<b>240</b>	<b>665</b>	<b>↑</b>	<b>177%</b>	<b>26%</b>
<b>45-64</b>	<b>N.A.</b>	<b>165</b>	<b>310</b>	<b>715</b>	<b>↑</b>	<b>131%</b>	<b>28%</b>
<b>65+</b>	<b>N.A.</b>	<b>110</b>	<b>85</b>	<b>590</b>	<b>↑</b>	<b>594%</b>	<b>23%</b>
<b>Median Age</b>	<b>N.A.</b>	<b>N.A.</b>	<b>N.A.</b>	<b>46.5</b>			

2011 Census Age Cohort Breakout	Male	Female	Total	As a % of Neighbourhood
0 to 4	80	80	160	6.31%
5 to 9	95	100	195	7.69%
10 to 14	55	60	115	4.54%
15 to 19	50	35	85	3.35
20 to 24	40	45	85	3.35%
25 to 29	25	35	60	2.37%
30 to 34	50	70	120	4.73%
35 to 39	95	105	200	7.89%
40 to 44	110	95	205	8.09%
45 to 49	65	75	140	5.52%
50 to 54	60	80	140	5.52%
55 to 59	90	100	190	7.50%
60 to 64	115	130	245	9.66%
65 to 69	105	115	220	8.68%
70 to 74	75	55	130	5.13%
75 to 79	35	35	70	2.76%
80 to 84	30	40	70	2.76%
85+	25	80	105	4.14%
<b>Total</b>	<b>1,200</b>	<b>1,335</b>	<b>2,535</b>	



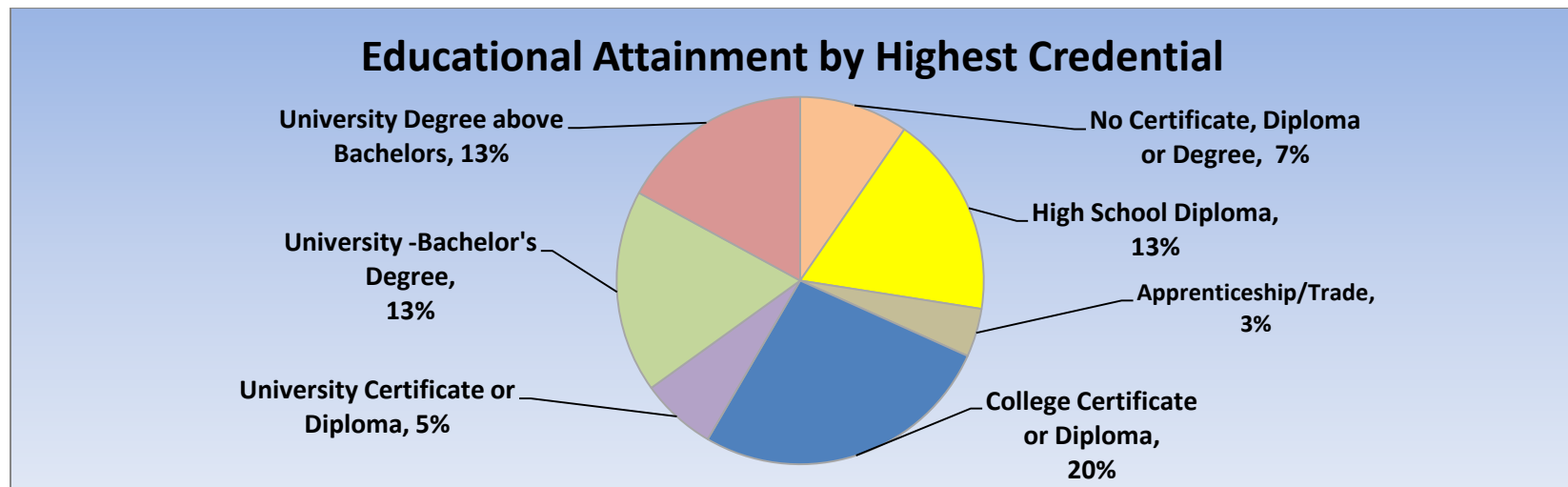
Marital Status	1996	2001	2006	2011	Change From Previous Period	As a % of Neighbourhood
Single	N.A.	90	140	240	↑ 71%	10%
Married	N.A.	185	480	1,510	↑ 215%	60%
Common-Law	N.A.	75	55	90	↑ 64%	4%
Divorced	N.A.	70	50	40	↓ (-20%)	2%
Separated	N.A.	10	25	25	– –	1%
Widowed	N.A.	50	20	145	↑ 625%	6%
Citizenship, Immigration & Ethnic Identity	1996	2001	2006	2011	Change From Previous Period	As a % of Neighbourhood
<b>Citizenship</b>						
Canadian Citizens	N.A.	465	860	2,295	↑ 167%	91%
Non-Canadian Citizens	N.A.	10	10	90	↑ 800%	4%
<b>Immigration Status</b>						
Canadian Born Population	N.A.	350	755	1,950	↑ 158%	77%
Foreign Born Population	N.A.	120	110	415	↑ 277%	16%
Visible Minority Population	N.A.	0	70	100	↑ 43%	4%
Aboriginal Identity Population	N.A.	0	0	15	↑ 100%	1%

Family Composition	1996	2001	2006	2011	Change From Previous Period	As a % of Neighbourhood
<b>Number of Census Families</b>	<b>N.A.</b>	<b>160</b>	<b>280</b>	<b>800</b>	↑ 186%	
Family Size - 2 Persons	N.A.	120	145	450	↑ 210%	56%
Family Size - 3 Persons	N.A.	25	50	105	↑ 110%	13%
Family Size - 4 Persons	N.A.	10	55	185	↑ 236%	23%
Family Size - ≥ 5 Persons	N.A.	10	25	50	↑ 100%	6%
<b>Census Family - Average Size</b>	<b>N.A.</b>	<b>2.5</b>	<b>3</b>	<b>2.80</b>	↓	



Family Structure & Number of Children	1996	2001	2006	2011	Change From Previous Period	
<b>Married Couples</b>	<b>N.A.</b>	<b>90</b>	<b>240</b>	<b>730</b>	<b>↑</b>	<b>204%</b>
Without Children	N.A.	75	115	415	↑	261%
With Children	N.A.	20	125	315	↑	152%
<b>Common-Law</b>	<b>N.A.</b>	<b>40</b>	<b>30</b>	<b>45</b>	<b>↑</b>	<b>50%</b>
Without Children	N.A.	10	25	30	↑	20%
With Children	N.A.	20	5	15	↑	200%
<b>Lone Parent Families</b>	<b>N.A.</b>	<b>35</b>	<b>15</b>	<b>25</b>	<b>↑</b>	<b>67%</b>
Female Headed	N.A.	25	5	20	↑	300%
1 Child	N.A.	25	N.A.	10	—	—
2 Children	N.A.	0	N.A.	10	—	—
≥ 3 Children	N.A.	0	N.A.	0	—	—
Male Headed	N.A.	10	10	5	↓	(-50%)
1 Child	N.A.	10	N.A.	0	—	—
2 Children	N.A.	0	N.A.	5	—	—
≥ 3 Children	N.A.	0	N.A.	0	—	—

Educational Attainment by Credential	1996	2001	2006	2011	Change From Previous Period		As a % of Neighbourhood
No Certificate, Diploma or Degree	N.A.	N.A.	15	180	↑	1100%	7%
High School Diploma or Equivalent	N.A.	N.A.	190	335	↑	76%	13%
Apprenticeship, or Trade Certificate	N.A.	10	0	80	↑	100%	3%
College Certificate or Diploma	N.A.	45	125	500	↑	300%	20%
University Certificate or Diploma	N.A.	N.A.	N.A.	125	—	—	5%
University -Bachelor's Degree	N.A.	N.A.	105	335	↑	219%	13%
University Degree above bachelor level (M.A. or PhD)	N.A.	N.A.	45	320	↑	611%	13%



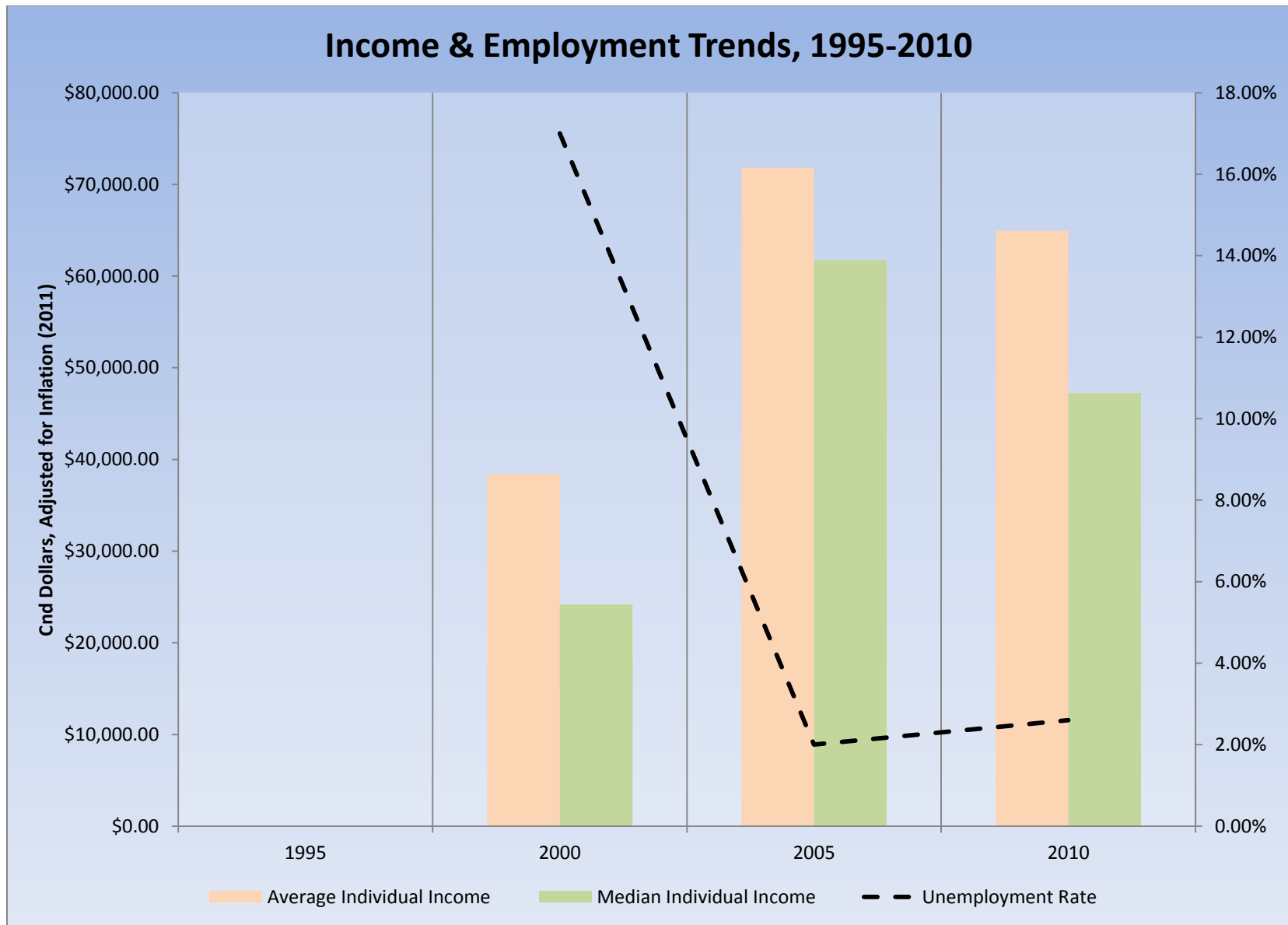


Housing by Structure Type & Tenure	1996	2001	2006	2011	Change From Previous Period		As a % of Neighbourhood
<b>Total Occupied Dwellings</b>	<b>N.A.</b>	<b>225</b>	<b>315</b>	<b>875</b>	<b>↑</b>	<b>178%</b>	
Single-Detached	N.A.	30	240	750	↑	213%	86%
Semi-Detached	N.A.	15	15	20	↑	33%	2%
Row House	N.A.	125	60	100	↑	67%	11%
Duplex	N.A.	0	0	0	—	—	0%
Apartment < 5 Storeys	N.A.	60	0	5	↑	100%	1%
Apartment ≥ 5 Storeys	N.A.	0	0	0	—	—	0%
<b>Number of Owned Dwellings</b>	<b>N.A.</b>	<b>130</b>	<b>305</b>	<b>855</b>	<b>↑</b>	<b>180%</b>	
Owned as a % of Total	N.A.	59%	97%	98%	↑		
<b>Number of Rented Dwellings</b>	<b>N.A.</b>	<b>90</b>	<b>5</b>	<b>20</b>	<b>↑</b>	<b>300%</b>	
Rented as a % of Total	N.A.	41%	3%	2%	↓		
Average # of Rooms	N.A.	5.9	7.8	8	↑		
Average # of Bedrooms	N.A.	2.2	3	N.A.	—	—	
Average Gross Rent	N.A.	\$478.00	N.A.	\$2,226.00	—	—	
Average Value of Dwelling	N.A.	\$193,256.00	\$357,540.00	\$422,102.00	↑	18%	

Labour Market Indicators	1996	2001	2006	2011	Change From Previous Period		As a % of Neighbourhood
<b>Total Labour Force ≥ 15 years</b>	<b>N.A.</b>	<b>175</b>	<b>550</b>	<b>1,135</b>	<b>↑</b>	<b>106%</b>	
Female	N.A.	95	255	520	↑	104%	46%
Male	N.A.	80	295	615	↑	108%	54%
<b>Unemployment Rate</b>	<b>N.A.</b>	<b>17%</b>	<b>2%</b>	<b>2.60%</b>	<b>↑</b>		
Female	N.A.	16%	4%	0%	↓		
Male	N.A.	19%	<1%	3.3%	↑		
Employment Rate	N.A.	N.A.	N.A.	59.20%	—	—	
Participation Rate	N.A.	44%	78%	60.90%	↓		
Female	N.A.	45%	74%	54.20%	↓		
Male	N.A.	43%	81%	66.30%	↓		
<b>Labour Force by Sector</b>							
Primary (Agriculture & Resources)	N.A.	10	0	10	↑	100%	2%
Secondary (Construction & Manufacturing)	N.A.	25	70	90	↑	29%	15%
Tertiary Services	N.A.	155	470	500	↑	6%	83%

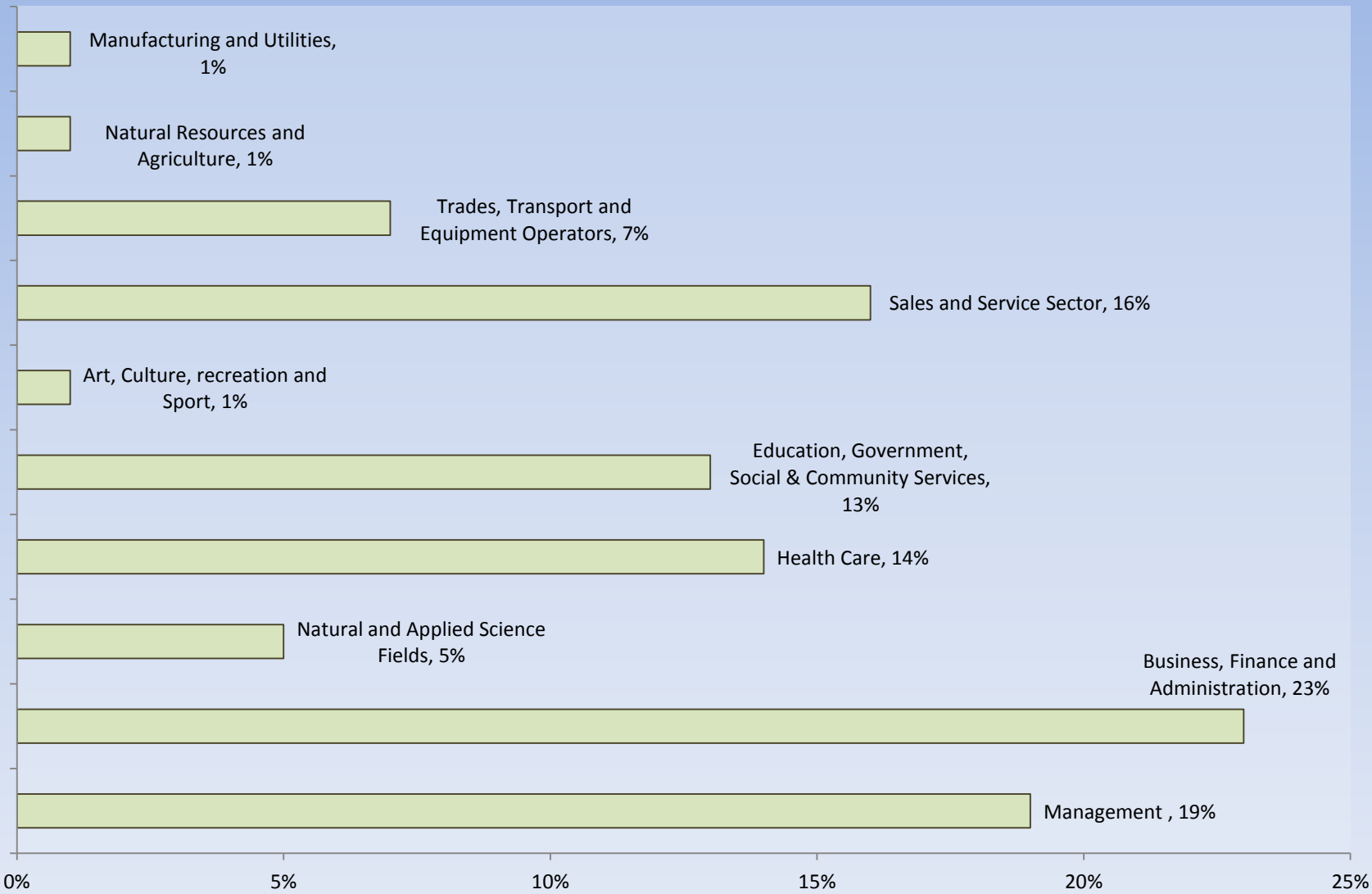
Income Characteristics of Economically Active Population	1996	2001	2006	2011	Change From Previous Period
<b>Individual Income</b>					
Average Income	N.A.	\$30,603.00	\$64,093.00	\$62,989.00	↓ (-1.72%)
Median Income	N.A.	\$19,281.00	\$55,083.00	\$45,825.00	↓ (-17%)
<b>Income by Gender</b>					
Average Income – Male	N.A.	\$37,194.00	\$81,333.00	\$80,405.00	↓ (-1%)
Average Income - Female	N.A.	\$24,012.00	\$45,596.00	\$46,646.00	↑ 2%
Median Income – Male	N.A.	\$21,117.00	\$67,955.00	\$62,887.00	↓ (-7%)
Median Income - Female	N.A.	\$17,446.00	\$35,282.00	\$34,555.00	↓ (-2%)
<b>Household Income</b>					
Average Household Income	N.A.	\$50,747.00	\$139,403.00	\$130,576.00	↓ (-6%)
Median Household Income	N.A.	\$34,547.00	\$128,576.00	\$116,752.00	↓ (-9%)
<b>Family Income</b>					
Average Family Income	N.A.	\$59,413.00	\$143,147.00	\$138,457.00	↓ (-3%)
Median Family Income	N.A.	\$39,291.00	\$129,156.00	\$123,587.00	↓ (-4%)
<b>Lone-Parent Families</b>					
Average Family Income	N.A.	N.A.	N.A.	N.A.	— —
Median Family Income	N.A.	N.A.	N.A.	N.A.	— —

Data Note: Income figures based on previous reporting year (1995, 2000, 2005 & 2010).



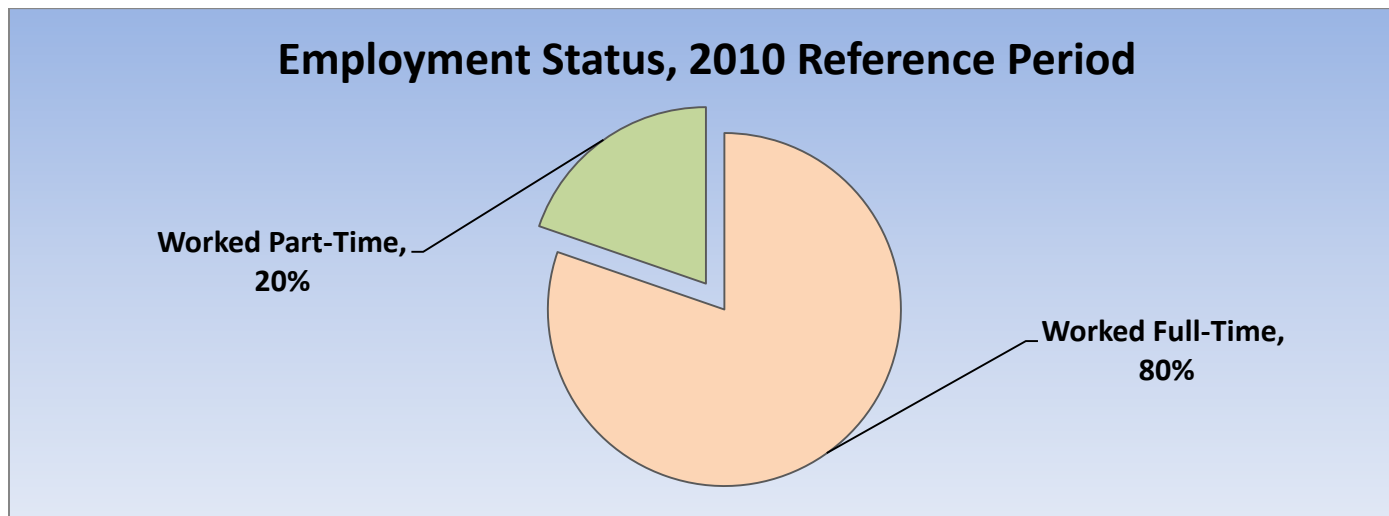
<b>Labour Force by National Occupational Classification</b>	<b>1996</b>	<b>2001</b>	<b>2006</b>	<b>2011</b>	<b>Change From Previous Period</b>		<b>As a % of Labour Force</b>
Management	N.A.	30	125	210	↑	68%	19%
Business, Finance and Administration	N.A.	35	110	260	↑	136%	23%
Natural and Applied Science Fields	N.A.	0	10	55	↑	450%	5%
Health Care	N.A.	0	10	155	↑	1,450%	14%
Education, Government, Social & Community Services	N.A.	10	60	140	↑	133%	13%
Art, Culture, recreation and Sport	N.A.	0	10	15	↑	50%	1%
Sales and Service Sector	N.A.	60	120	175	↑	46%	16%
Trades, Transport and Equipment Operators	N.A.	20	35	80	↑	129%	7%
Natural Resources and Agriculture	N.A.	0	0	15	↑	100%	1%
Manufacturing and Utilities	N.A.	0	45	15	↓	67%	1%

### Employment Trends by Occupational Breakout, 2006-2011



Class of Worker	1996	2001	2006	2011	Change From Previous Period	As a % Neighbourhood
<b>Employee</b>	<b>N.A.</b>	<b>160</b>	<b>480</b>	<b>925</b>	<b>↑ 93%</b>	<b>82%</b>
Female	N.A.	90	245	445		
Male	N.A.	70	235	480		
<b>Self-Employed</b>	<b>N.A.</b>	<b>10</b>	<b>70</b>	<b>200</b>	<b>↑ 186%</b>	<b>18%</b>
Female	N.A.	N.A.	10	70		
Male	N.A.	10	60	125		

Employment Status	1996	2001	2006	2011	Change From Previous Period	As a % of Active Labour Force
Worked Full-Time in 2010	N.A.	N.A.	N.A.	855	N.A.	80%
Worked Part-Time in 2010	N.A.	N.A.	N.A.	210	N.A.	20%



Mode of Transport to Work	1996	2001	2006	2011	Change From Previous Period	As a % of Neighbourhood
Automobile -As a Driver	N.A.	100	410	910	↑ 122%	97%
Car-Pool	N.A.	0	60	25	↓ (-58%)	3%
Public Transportation	N.A.	0	40	0	↓ (-100%)	0%
Walked or Bicycled	N.A.	10	20	0	↓ (-100%)	0%
Other Modes	N.A.	0	0	0	— —	0%
<b>Median Commuting Duration</b>	<b>N.A.</b>	<b>N.A.</b>	<b>N.A.</b>	<b>20.3</b>		

Place of Work	1996	2001	2006	2011	Change From Previous Period	As a % of Neighbourhood
Worked at Home	N.A.	10	35	130	↑ 271%	12%
Worked at a Fixed Address	N.A.	125	475	905	↑ 91%	83%
No Fixed Workplace Address	N.A.	10	30	60	↑ 100%	5%
Worked within Municipality	N.A.	120	390	N.A.	— —	
Work in a different Municipality	N.A.	0	80	N.A.	— —	
Worked outside Canada	N.A.	0	0	10	↑	<1%

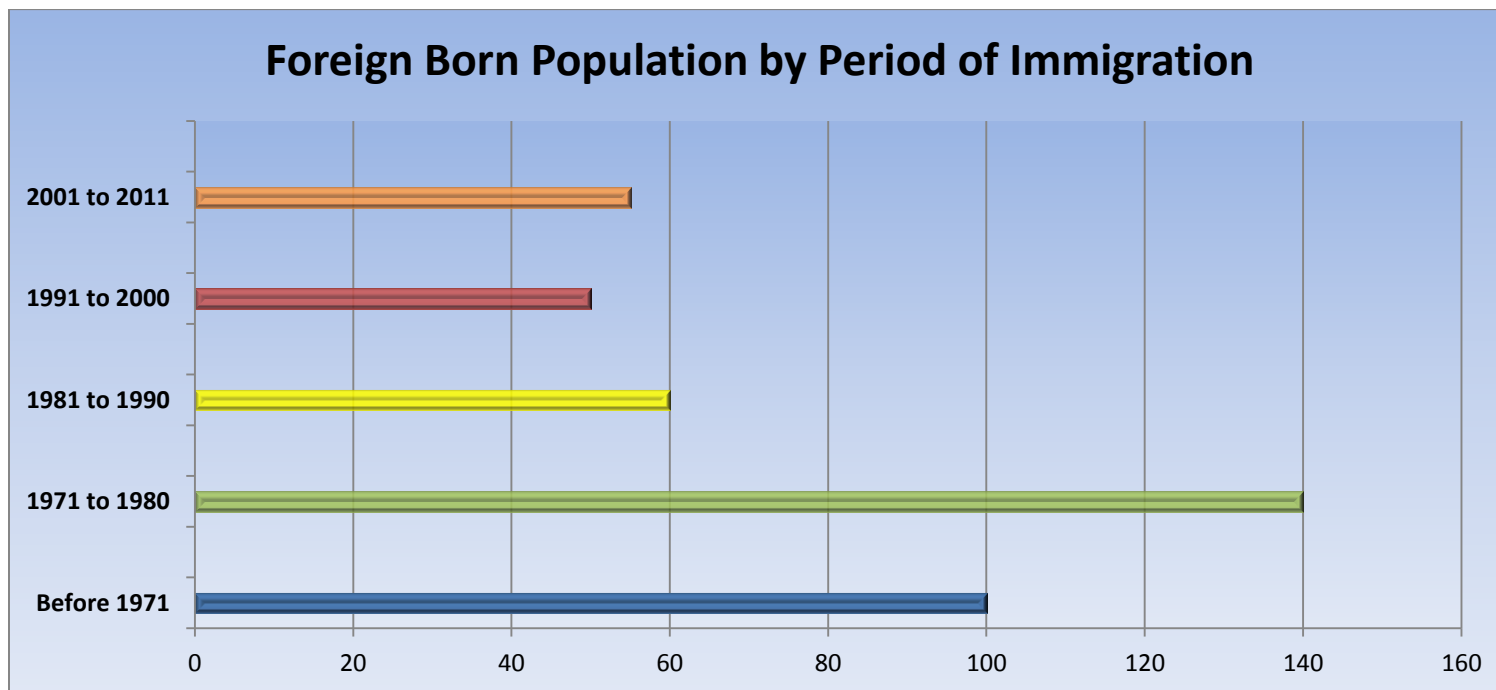


Mobility/Migration Status	1996	2001	2006	2011	Change From Previous Period	As a % of Neighbourhood
Lived at the same address 5 years ago	N.A.	195	45	725	↑	33%
<b>Moved sometime with the last 5 years</b>	<b>N.A.</b>	<b>275</b>	<b>780</b>	<b>1,450</b>	<b>↑ (86%)</b>	<b>67%</b>
<b>Internal Migrants</b>	<b>N.A.</b>	<b>105</b>	<b>215</b>	<b>585</b>	<b>↑ (172%)</b>	<b>93%</b>
- Intra-provincial	N.A.	105	205	540	↑	
- Inter-provincial	N.A.	0	10	40	↑	
<b>External Migrants</b>	<b>N.A.</b>	<b>0</b>	<b>20</b>	<b>45</b>	<b>↑ (125%)</b>	<b>7%</b>
Lived at the same address 1 years ago	N.A.	370	500	1,020	↑ 104%	86%
<b>Moved sometime with the last year</b>	<b>N.A.</b>	<b>105</b>	<b>360</b>	<b>170</b>	<b>↓ (-53%)</b>	<b>14%</b>
<b>Internal Migrants</b>	<b>N.A.</b>	<b>70</b>	<b>105</b>	<b>90</b>	<b>↓ (-14%)</b>	<b>100%</b>
- Intra-provincial	N.A.	0	95	85	↓ (-11%)	
- Inter-provincial	N.A.	0	10	5	↓ (-50%)	
<b>External Migrants</b>	<b>N.A.</b>	<b>0</b>	<b>0</b>	<b>0</b>	<b>— —</b>	<b>0%</b>

Place of Birth	1996	2001	2006	2011	Change From Previous Period		As a % of Neighbourhood
<b>Total Immigrant Population</b>	<b>N.A.</b>	<b>N.A.</b>	<b>100</b>	<b>415</b>	<b>↑</b>	<b>315%</b>	<b>16%</b>
<b>Place of Birth by Continent</b>							
North America (US only)	N.A.	N.A.	10	30	↑	200%	1%
Africa	N.A.	N.A.	0	0	—	—	0%
Asia	N.A.	N.A.	15	70	↑	367%	3%
Caribbean	N.A.	N.A.	0	0	—	—	0%
Central and South America	N.A.	N.A.	0	0	—	—	0%
Europe	N.A.	N.A.	80	315	↑	294%	13%
<b>Recent Immigration by Continent, 2006-2011</b>							
<b>Recent Immigrants</b>	<b>N.A.</b>	<b>N.A.</b>	<b>0</b>	<b>50</b>	<b>↑</b>	<b>100%</b>	<b>2%</b>
North America (US only)	N.A.	N.A.	0	N.A.	N.A.	N.A.	N.A.
Africa	N.A.	N.A.	0	N.A.	N.A.	N.A.	N.A.
Asia	N.A.	N.A.	0	N.A.	N.A.	N.A.	N.A.
Caribbean	N.A.	N.A.	0	N.A.	N.A.	N.A.	N.A.
Central and South America	N.A.	N.A.	0	N.A.	N.A.	N.A.	N.A.
Europe	N.A.	N.A.	0	N.A.	N.A.	N.A.	N.A.

Immigration by Place of Birth	1996	2001	2006	2011	Change From Previous Period	As a % of Neighbourhood
1. United Kingdom	N.A.	N.A.	N.A.	185	— —	185
N.A.	N.A.	N.A.	N.A.	N.A.	— —	N.A.

Period of Immigration	1996	2001	2006	2011	Change From Previous Period	As a % of Neighbourhood
Before 1971	N.A.	N.A.	40	100	↑ 150%	4%
1971 to 1980	N.A.	N.A.	10	140	↑ 1300%	6%
1981 to 1990	N.A.	N.A.	20	60	↑ 200%	2%
1991 to 2000	N.A.	N.A.	25	50	↑ 100%	2%
2001 to 2011	N.A.	N.A.	30	55	↑ 83%	2%



Language	1996	2001	2006	2011	Change From Previous Period		As a % of Neighbourhood
<b>Knowledge of Official Languages</b>							
English Only	N.A.	470	785	2,150	↓	174%	85%
French Only	N.A.	0	10	0	↓	(-100%)	0%
English and French	N.A.	0	95	205	↑	116%	8%
Neither English or French	N.A.	0	0	5	↑	100%	<1%
<b>Language Spoken Most Often at Home</b>							
English	N.A.	365	750	2,220	↑	196%	88%
French	N.A.	0	40	10	↓	(-75%)	<1%
Non-Official Language	N.A.	100	85	85	—	—	3%
<b>Mother Tongue *</b>							
English	N.A.	400	835	980	↑	17%	39%
French	N.A.	0	20	15	↓	(-25%)	1%
Non-Official Language	N.A.	20	0	140	↑	100%	6%

\* Statistics Canada defines 'mother tongue' as the first language learned in childhood and still understood by the individual at the time of census reporting.

<b>Non-Official Languages Spoken Top 10 Reported</b>	<b>1996</b>	<b>2001</b>	<b>2006</b>	<b>2011</b>	<b>Change From Previous Period</b>	<b>As a % of Neighbourhood</b>
1. Chinese*	N.A.	N.A.	N.A.	80	— —	3%
2. Portuguese	N.A.	N.A.	N.A.	50	— —	2%
N.A.	N.A.	N.A.	N.A.	N.A.		
N.A.	N.A.	N.A.	N.A.	N.A.		
N.A.	N.A.	N.A.	N.A.	N.A.		
N.A.	N.A.	N.A.	N.A.	N.A.		
N.A.	N.A.	N.A.	N.A.	N.A.		
N.A.	N.A.	N.A.	N.A.	N.A.		
N.A.	N.A.	N.A.	N.A.	N.A.		
N.A.	N.A.	N.A.	N.A.	N.A.		

\* Refers to Cantonese and Mandarin language speakers as well as others who do not specify otherwise.

Religious Identification	1996	2001	2006	2011	Change From Previous Period	As a % of Neighbourhood
Buddhist	N.A.	N.A.	N.A.	0		0%
Christian	N.A.	N.A.	N.A.	1,755		70%
Anglican	N.A.	N.A.	N.A.	280		11%
Baptist	N.A.	N.A.	N.A.	60		2%
Catholic	N.A.	N.A.	N.A.	885		35%
Orthodox	N.A.	N.A.	N.A.	35		1%
Lutheran	N.A.	N.A.	N.A.	45		2%
Pentecostal	N.A.	N.A.	N.A.	0		0%
Presbyterian	N.A.	N.A.	N.A.	120		5%
United Church	N.A.	N.A.	N.A.	250		10%
Other Christian	N.A.	N.A.	N.A.	90		4%
Hindu	N.A.	N.A.	N.A.	0		0%
Jewish	N.A.	N.A.	N.A.	0		0%
Muslim	N.A.	N.A.	N.A.	30		1%
Sikh	N.A.	N.A.	N.A.	0		0%
Aboriginal Spirituality	N.A.	N.A.	N.A.	0		0%

Notes:

- (1) Source Data –Statistics Canada. 1996-2011 Census Data, Customized Profiles. Ottawa, Canada
- (2) Data also derived from Statistics Canada’s National Household Survey (NHS)
- (3) Customized Community and Neighbourhood Profiles tabulated and compiled by the City of London’s Planning Division –Policy Planning and Research Section.