



Oakridge Neighbourhood Profile

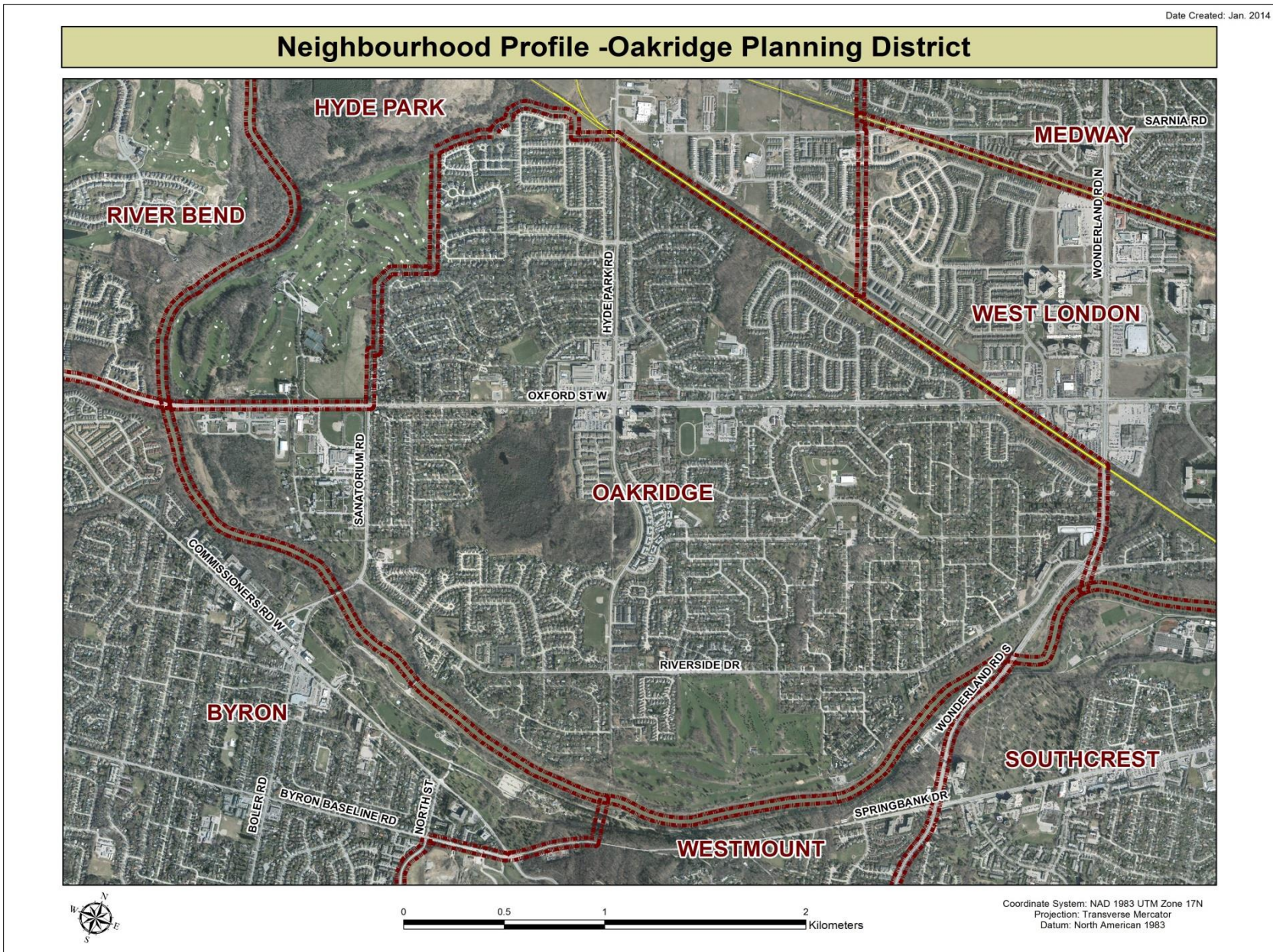
For further information contact:

John-Paul Sousa

Planning Research Analyst

Direct: (519) 661-2500 ext. 5989 | email: jpsousa@london.ca

Date Created: Jan. 2014

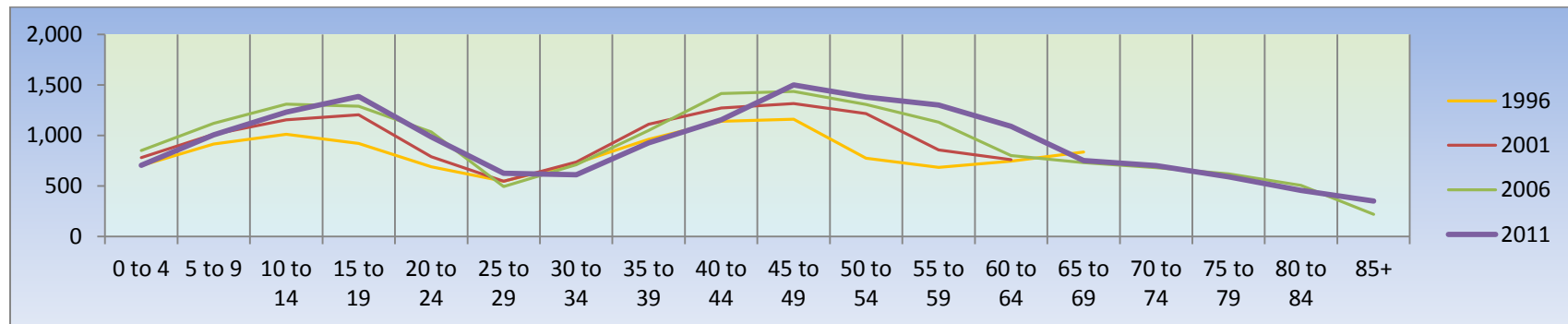


Population Characteristics & Age Distribution

Oakridge Neighbourhood	1996	2001	2006	2011	Change From Previous Period	
Total Population	13,205	15,340	16,710	16,730	↑	<1%
Female	6,870	7,960	8,620	8,725	↑	<1%
Male	6,335	7,380	8,090	8,005	↓	(<-1%)

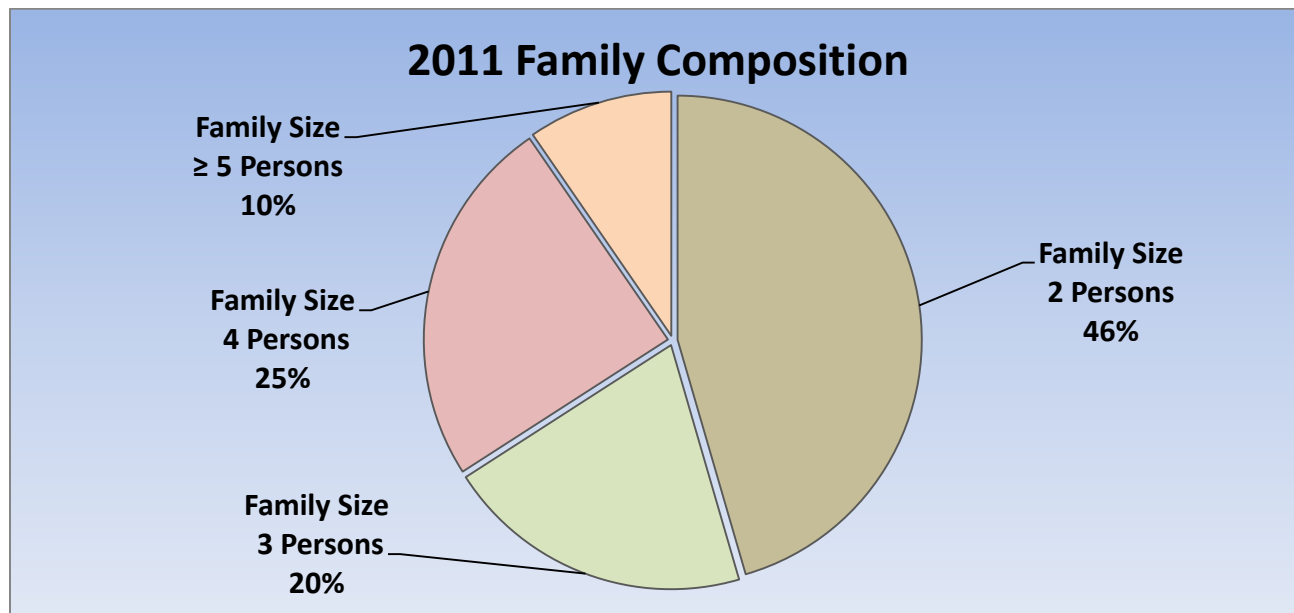
Age Structure	1996	2001	2006	2011	Change From Previous Period		As a % of Neighbourhood
0-19	3,545	4,150	4,570	4,320	↓	(-5%)	26%
0 to 4	700	780	850	705	↓	(-17%)	4%
5 to 9	915	1,010	1,120	1,005	↓	(-10%)	6%
10 to 14	1,010	1,155	1,310	1,230	↓	(-6%)	7%
15 to 19	920	1,205	1,290	1,380	↑	7%	8%
20-44	4,060	4,450	4,705	4,295	↓	(-9%)	26%
45-64	3,365	4,145	4,670	5,270	↑	13%	32%
65+	2,220	2,585	2,755	2,845	↑	3%	17%
Median Age	N.A.	N.A.	N.A.	43.9			

2011 Census Age Cohort Breakout	Male	Female	Total	As a % of Neighbourhood
0 to 4	325	380	705	4.21%
5 to 9	515	490	1,005	6.00%
10 to 14	625	605	1,230	7.35%
15 to 19	700	685	1,385	8.27%
20 to 24	495	490	985	5.88%
25 to 29	320	305	625	3.73%
30 to 34	290	320	610	3.64%
35 to 39	430	495	925	5.53%
40 to 44	515	640	1,155	6.90%
45 to 49	710	790	1,500	8.96%
50 to 54	630	750	1,380	8.24%
55 to 59	625	675	1,300	7.77%
60 to 64	545	545	1,090	6.51%
65 to 69	330	420	750	4.48%
70 to 74	325	375	700	4.18%
75 to 79	265	325	590	3.52%
80 to 84	220	235	455	2.72%
85+	140	210	350	2.09%
Total	8,005	8,735	16,740	



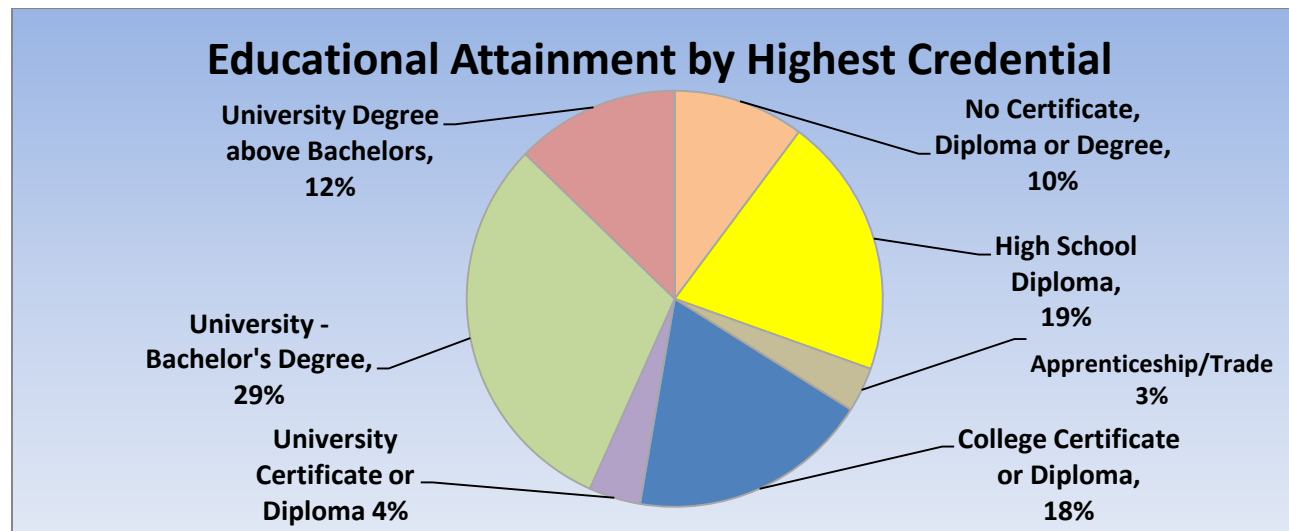
Marital Status	1996	2001	2006	2011	Change From Previous Period	As a % of Neighbourhood
Single	2,410	2,940	3,365	3,360	↓	20%
Married	6,870	7,930	8,310	8,170	↓	49%
Common-Law	280	445	545	675	↑	4%
Divorced	425	600	680	620	↓	4%
Separated	295	270	320	275	↓	2%
Widowed	570	655	755	695	↓	4%
Citizenship, Immigration & Ethnic Identity	1996	2001	2006	2011	Change From Previous Period	As a % of Neighbourhood
Citizenship						
Canadian Citizens	12,890	14,720	15,915	16,725	↑	100%
Non-Canadian Citizens	310	610	795	610	↓	4%
Immigration Status						
Canadian Born Population	11,060	12,830	13,515	13,620	↑	81%
Foreign Born Population	2,115	2,400	3,085	2,935	↓	18%
Visible Minority Population	550	890	1,440	1,940	↑	12%
Aboriginal Identity Population	35	115	125	350	↑	2%

Family Composition	1996	2001	2006	2011	Change From Previous Period	As a % of Neighbourhood
Number of Census Families	3,945	4,630	4,960	5,000	↑	
Family Size - 2 Persons	1,890	2,140	2,225	2,275	↑	46%
Family Size - 3 Persons	720	840	890	1,020	↑	20%
Family Size - 4 Persons	910	1,135	1,245	1,225	↓	25%
Family Size - ≥ 5 Persons	430	510	595	480	↓	10%
Census Family - Average Size	3.00	3.00	3.00	3.00		



Family Structure & Number of Children	1996	2001	2006	2011	Change From Previous Period
Married Couples	3,420	3,935	4,135	4,045	↓
Without Children	1,580	1,710	1,725	1,725	–
With Children	1,835	2,225	2,415	2,315	↓
Common-Law	140	225	270	335	↑
Without Children	95	130	140	200	↑
With Children	45	90	135	135	–
Lone Parent Families	385	470	550	620	↑
Female Headed	340	405	455	505	↑
1 Child	185	260	295	280	↓
2 Children	115	105	125	185	↑
≥ 3 Children	45	40	35	45	↑
Male Headed	45	65	90	115	↑
1 Child	30	40	70	70	–
2 Children	15	20	25	35	↑
≥ 3 Children	0	10	0	10	↑

Educational Attainment by Credential	1996	2001	2006	2011	Change From Previous Period	As a % of Neighbourhood
No Certificate, Diploma or Degree	N.A.	N.A.	785	1,610	↑	10%
High School Diploma or Equivalent	N.A.	N.A.	3,500	3,205	↓	19%
Apprenticeship, or Trade Certificate	N.A.	N.A.	720	550	↓	3%
College Certificate or Diploma	N.A.	N.A.	2,510	2,960	↑	18%
University Certificate or Degree	N.A.	N.A.	220	635	↑	4%
University -Bachelor's Degree	N.A.	N.A.	2,500	4,830	↑	29%
University Degree above bachelor level (M.A. or PhD)	N.A.	N.A.	1,125	2,015	↑	12%

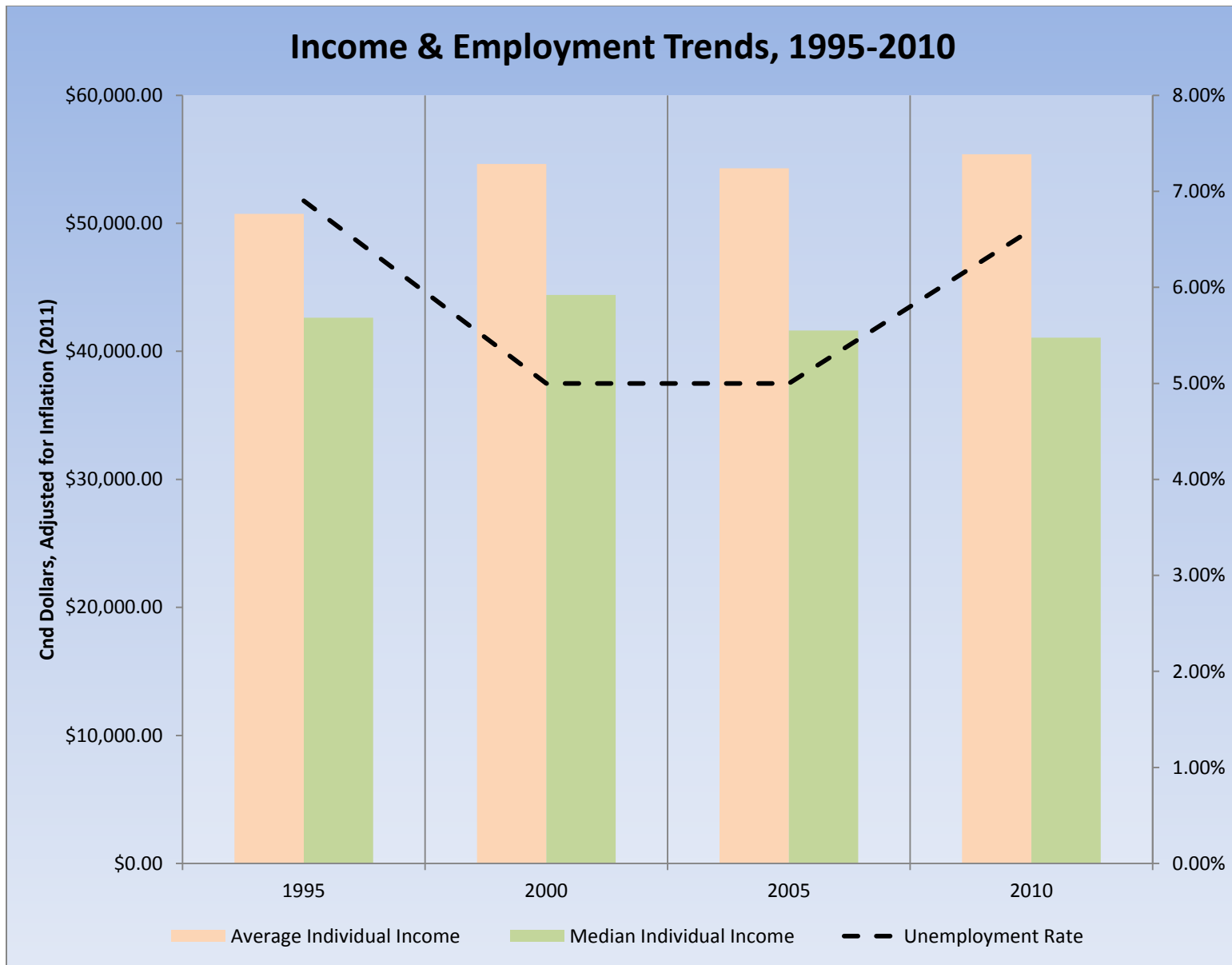


Housing by Structure Type & Tenure	1996	2001	2006	2011	Change From Previous Period	As a % of Neighbourhood
Total Occupied Dwellings	4,900	5,535	6,135	6,310	3%	
Single-Detached	3,655	4,340	4,680	4,810	3%	76%
Semi-Detached	0	10	15	5	(-67%)	<1%
Row House	600	670	745	810	9%	13%
Duplex	10	10	20	15	(-25%)	<1%
Apartment < 5 Storeys	180	220	195	180	(-8%)	3%
Apartment ≥ 5 Storeys	445	480	480	475	(-1%)	8%
Number of Owned Dwellings	4,235	4,975	5,415	5,610	4%	
Owned as a % of Total	86%	87%	88%	89%		
Number of Rented Dwellings	665	750	720	695	(-3%)	
Rented as a % of Total	14%	13%	12%	11%		
Average # of Rooms	7.70	7.90	8.1	8		
Average # of Bedrooms	3.20	3.10	3.2	N.A.		
Average Gross Rent	\$643.00	\$707.00	\$743.00	\$802.00	8%	
Average Value of Dwelling	\$190,394.00	\$204,458.00	\$274,005.00	\$319,726.00	17%	

Labour Market Indicators	1996	2001	2006	2011	Change From Previous Period	As a % of Neighbourhood
Total Labour Force ≥ 15 years	7,035	7,985	8,870	8,895	↑	
Female	3,465	3,900	4,255	4,440	↑	50%
Male	3,570	4,085	4,615	4,445	↓	50%
Unemployment Rate	6.90%	5%	5%	6.60%	↑	
Female	6.60%	5%	5%	6.40%	↑	
Male	7.30%	5%	5%	6.90%	↑	
Employment Rate	N.A.	N.A.	N.A.	60.20%		
Participation Rate	67%	65%	66%	64.50%	↓	
Female	62%	60%	60%	61.20%	↑	
Male	72%	70%	72%	68.10%	↓	
Labour Force by Sector						
Primary (Agriculture & Resources)	45	100	75	85	↑	1%
Secondary (Construction & Manufacturing)	885	1,140	1,045	815	↓	9%
Tertiary Services	5,960	6,635	7,615	7,795	↑	90%

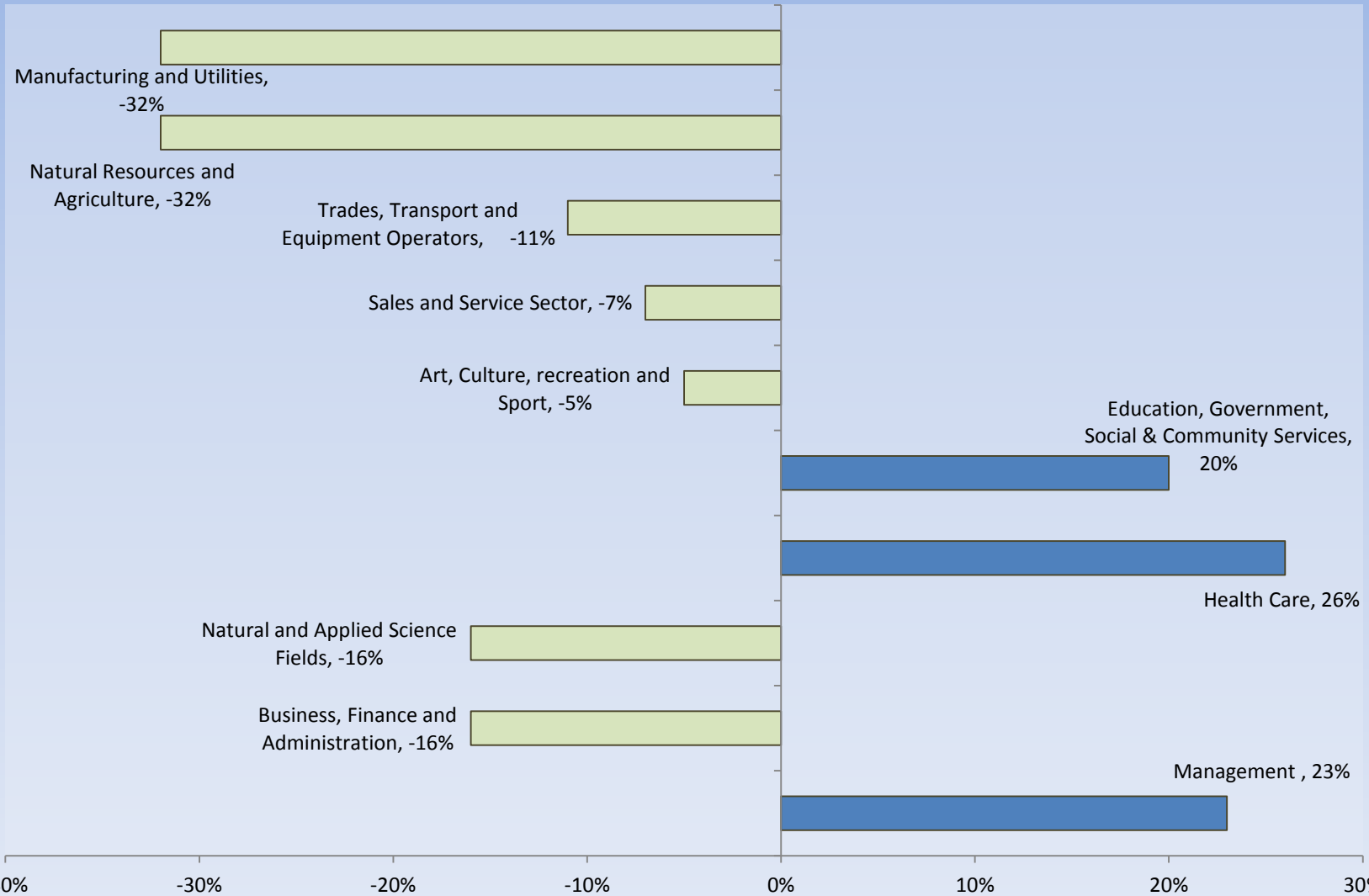
Income Characteristics of Economically Active Population	1996	2001	2006	2011	Change From Previous Period	
Individual Income						
Average Income	\$37,167.00	\$43,620.00	\$48,452.00	\$53,925.00	↑	11%
Median Income	\$31,229.00	\$35,456.00	\$37,158.00	\$39,975.00	↑	8%
Income by Gender						
Average Income – Male	\$48,843.00	\$56,025.00	\$61,624.00	\$66,033.00	↑	7%
Average Income - Female	\$25,492.00	\$31,214.00	\$36,454.00	\$42,844.00	↑	18%
Median Income – Male	\$41,700.00	\$46,171.00	\$48,991.00	\$50,313.00	↑	3%
Median Income - Female	\$20,758.00	\$24,740.00	\$28,230.00	\$32,696.00	↑	16%
Household Income						
Average Household Income	\$75,038.00	\$88,890.00	\$101,743.00	\$112,095.00	↑	10%
Median Household Income	\$64,547.00	\$76,487.00	83,965.00	\$89,679.00	↑	7%
Family Income						
Average Family Income	\$82,222.00	\$97,368.00	\$112,091.00	\$124,966.00	↑	11%
Median Family Income	\$70,504.00	\$85,242.00	\$96,755.00	\$105,263.00	↑	9%
Lone-Parent Families						
Average Family Income	N.A.	N.A.	N.A.	\$65,927.00		
Median Family Income	N.A.	N.A.	N.A.	\$52,881.00		

Data Note: Income figures based on previous reporting year (1995, 2000, 2005 & 2010).



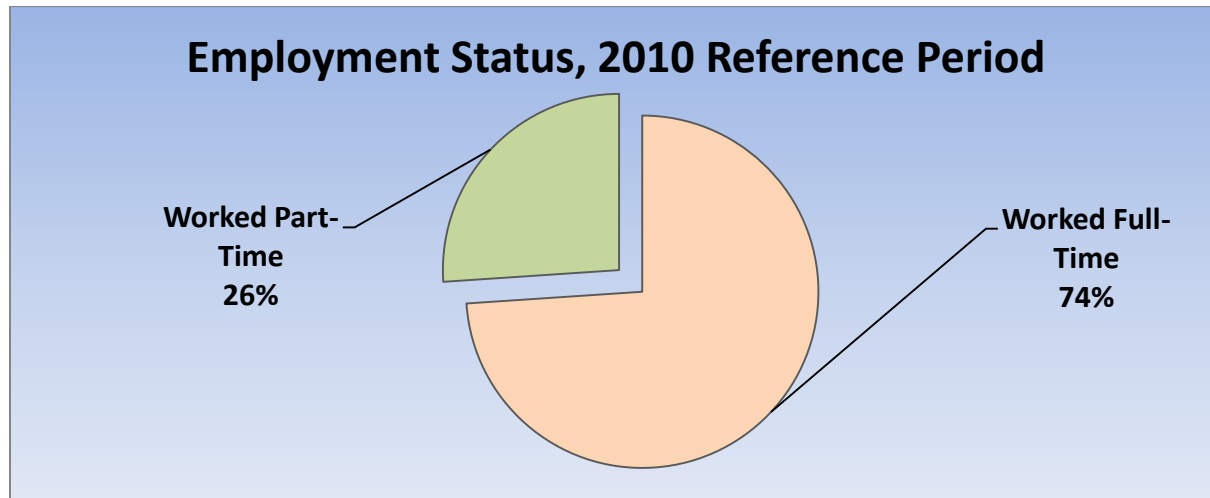
Labour Force by National Occupational Classification	1996	2001	2006	2011	Change From Previous Period	As a % of Labour Force
Management	900	1,200	1,035	1,275	↑ 23%	15%
Business, Finance and Administration	1,425	1,545	1,645	1,380	↓ (-16%)	16%
Natural and Applied Science Fields	310	525	665	560	↓ (-16%)	6%
Health Care	505	565	660	830	↑ 26%	10%
Education, Government, Social & Community Services	1,020	1,175	1,250	1,500	↑ 20%	17%
Art, Culture, recreation and Sport	160	260	290	275	↓ (-5%)	3%
Sales and Service Sector	1,815	1,725	2,120	1,975	↓ (-7%)	23%
Trades, Transport and Equipment Operators	395	540	755	675	↓ (-11%)	8%
Natural Resources and Agriculture	130	75	125	85	↓ (-32%)	1%
Manufacturing and Utilities	230	270	205	140	↓ (-32%)	2%

Employment Trends by Occupational Breakout, 2006-2011



Class of Worker	1996	2001	2006	2011	Change From Previous Period	As a % Neighbourhood
Employee	5,925	6,960	7,705	7,670	↓ <-1%	88%
Female	3,090	3,490	3,785	3,930		
Male	2,835	3,470	3,920	3,740		
Self-Employed	935	885	1,040	1,030	↑ 1%	12%
Female	295	310	395	415		
Male	640	575	645	615		

Employment Status	1996	2001	2006	2011	Change From Previous Period	As a % of Active Labour Force
Worked Full-Time in 2010	N.A.	N.A.	N.A.	6,270	N.A.	74%
Worked Part-Time in 2010	N.A.	N.A.	N.A.	2,210	N.A.	26%



Mode of Transport to Work	1996	2001	2006	2011	Change From Previous Period	As a % of Neighbourhood
Automobile -As a Driver	5,015	5,900	6,335	6,265	↓	83%
Car-Pool	380	450	705	605	↓	8%
Public Transportation	295	205	415	330	↓	4%
Walked or Bicycled	290	225	335	290	↓	4%
Other Modes	15	55	20	75	↑	1%
Median Commuting Duration	N.A.	N.A.	N.A.	20 min.		

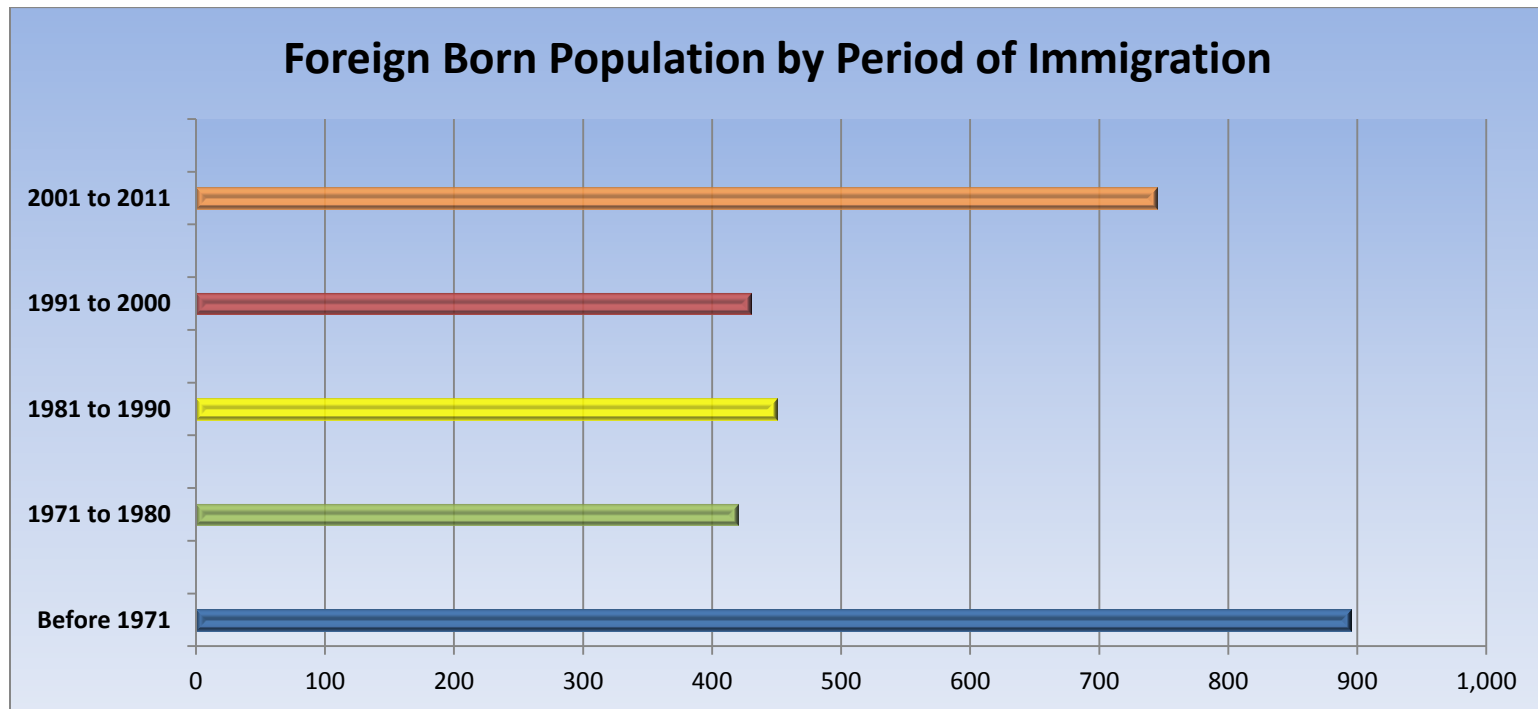
Place of Work	1996	2001	2006	2011	Change From Previous Period	As a % of Neighbourhood
Worked at Home	520	730	580	725	↑	9%
Worked at a Fixed Address	5,640	6,365	7,190	6,885	↓	83%
No Fixed Workplace Address	355	475	630	675	↑	8%
Worked within Municipality	4,940	5,665	6,365	N.A.	—	
Work in a different Municipality	400	700	820	N.A.	—	
Worked outside Canada	225	10	45	20	↓	

Mobility/Migration Status	1996	2001	2006	2011	Change From Previous Period	As a % of Neighbourhood
Lived at the same address 5 years ago	7,760	8,630	10,255	11,325	↑	71%
Moved sometime with the last 5 years	4,735	5,915	5,600	4,700	↓	29%
Internal Migrants	1,310	1,540	1,460	1,285	↓	74%
- Intra-provincial	1,190	1,215	1,260	1,045	↓	
- Inter-provincial	120	325	200	240	↑	
External Migrants	120	285	535	460	↓	26%
Lived at the same address 1 years ago	11,550	13,405	14,925	15,090	↑	91%
Moved sometime with the last year	1,540	1,790	1,650	1,495	↓	9%
Internal Migrants	365	465	455	490	↑	77%
- Intra-provincial	330	335	380	400	↑	
- Inter-provincial	35	125	70	85	↑	
External Migrants	130	170	105	150	↑	23%

Place of Birth	1996	2001	2006	2011	Change From Previous Period	As a % of Neighbourhood
Total Immigrant Population	N.A.	N.A.	3,085	2,935	↓	
Place of Birth by Continent						
North America (US only)	N.A.	N.A.	290	265	↓	
Africa	N.A.	N.A.	135	90	↓	
Asia	N.A.	N.A.	710	965	↑	
Caribbean	N.A.	N.A.	45	105	↑	
Central and South America	N.A.	N.A.	245	165	↓	
Europe	N.A.	N.A.	1,630	1,310	↓	
Recent Immigration by Continent, 2006-2011						
Recent Immigrants	N.A.	N.A.	460	410	↓	2%
North America (US only)	N.A.	N.A.	40	35	↓	<1%
Africa	N.A.	N.A.	45	15	↓	<1%
Asia	N.A.	N.A.	170	220	↑	1%
Caribbean	N.A.	N.A.	0	0	—	<1%
Central and South America	N.A.	N.A.	170	70	↓	<1%
Europe	N.A.	N.A.	40	50	↑	<1%

Immigration by Place of Birth	1996	2001	2006	2011	Change From Previous Period	As a % of Neighbourhood
1. United States	N.A.	N.A.	N.A.	265		3%
2. China (w Hong Kong)	N.A.	N.A.	N.A.	225		2%
3. South Korea	N.A.	N.A.	N.A.	220		2%
4. India	N.A.	N.A.	N.A.	140		1%
5. Iran	N.A.	N.A.	N.A.	140		1%
6. Colombia	N.A.	N.A.	N.A.	105		1%
7. Netherlands	N.A.	N.A.	N.A.	105		<1%
8. Poland	N.A.	N.A.	N.A.	90		<1%
9. Germany	N.A.	N.A.	N.A.	75		<1%
10. Guyana	N.A.	N.A.	N.A.	70		<1%

Period of Immigration	1996	2001	2006	2011	Change From Previous Period	As a % of Neighbourhood
Before 1971	N.A.	N.A.	1,115	895	↓	5%
1971 to 1980	N.A.	N.A.	380	420	↑	3%
1981 to 1990	N.A.	N.A.	360	450	↑	3%
1991 to 2000	N.A.	N.A.	770	430	↓	3%
2001 to 2011	N.A.	N.A.	460	745	↑	4%



Language	1996	2001	2006	2011	Change From Previous Period	As a % of Neighbourhood
Knowledge of Official Languages						
English Only	12,065	13,935	15,305	15,145	↓	91%
French Only	0	0	10	5	↓	<1%
English and French	1,110	1,285	1,325	1,450	↑	9%
Neither English or French	25	110	75	125	↑	1%
Language Spoken Most Often at Home						
English	12,770	14,020	15,460	15,225	↓	91%
French	35	10	95	80	↓	<1%
Non-Official Language	300	360	985	1,065	↑	6%
Mother Tongue *						
English	11,860	13,400	14,085	13,900	↓	83%
French	80	165	245	210	↓	1%
Non-Official Language	1,180	1,710	2,310	2,415	↑	14%

* Statistics Canada defines 'mother tongue' as the first language learned in childhood and still understood by the individual at the time of census reporting.

Non-Official Languages Spoken Top 10 Reported	1996	2001	2006	2011	Change From Previous Period	As a % of Neighbourhood
1. Spanish	N.A.	N.A.	N.A.	380		2%
2. Chinese*	N.A.	N.A.	N.A.	330		2%
3. Korean	N.A.	N.A.	N.A.	320		2%
4. German	N.A.	N.A.	N.A.	220		1%
5. Arabic	N.A.	N.A.	N.A.	200		1%
6. Dutch	N.A.	N.A.	N.A.	200		1%
7. Italian	N.A.	N.A.	N.A.	180		1%
8. Persian	N.A.	N.A.	N.A.	170		1%
9. Hindi	N.A.	N.A.	N.A.	140		1%
10. Polish	N.A.	N.A.	N.A.	135		1%

* Refers to Cantonese and Mandarin language speakers as well as others who do not specify otherwise.

Religious Identification	1996	2001	2006	2011	Change From Previous Period	As a % of Neighbourhood
Buddhist	N.A.	N.A.	N.A.	55		<1%
Christian	N.A.	N.A.	N.A.	11,965		72%
Anglican	N.A.	N.A.	N.A.	1,695		10%
Baptist	N.A.	N.A.	N.A.	420		3%
Catholic	N.A.	N.A.	N.A.	4,735		28%
Orthodox	N.A.	N.A.	N.A.	180		1%
Lutheran	N.A.	N.A.	N.A.	285		2%
Pentecostal	N.A.	N.A.	N.A.	50		<1%
Presbyterian	N.A.	N.A.	N.A.	615		4%
United Church	N.A.	N.A.	N.A.	2,505		15%
Other Christian	N.A.	N.A.	N.A.	1,490		9%
Hindu	N.A.	N.A.	N.A.	155		1%
Jewish	N.A.	N.A.	N.A.	85		1%
Muslim	N.A.	N.A.	N.A.	540		3%
Sikh	N.A.	N.A.	N.A.	0		0%
Aboriginal Spirituality	N.A.	N.A.	N.A.	0		0%

Notes:

- (1) Source Data –Statistics Canada. 1996-2011 Census Data, Customized Profiles. Ottawa, Canada
- (2) Data also derived from Statistics Canada’s National Household Survey (NHS)
- (3) Customized Community and Neighbourhood Profiles tabulated and compiled by the City of London’s Planning Division –Policy Planning and Research Section.