



Hamilton Road Neighbourhood Profile

For further information contact:

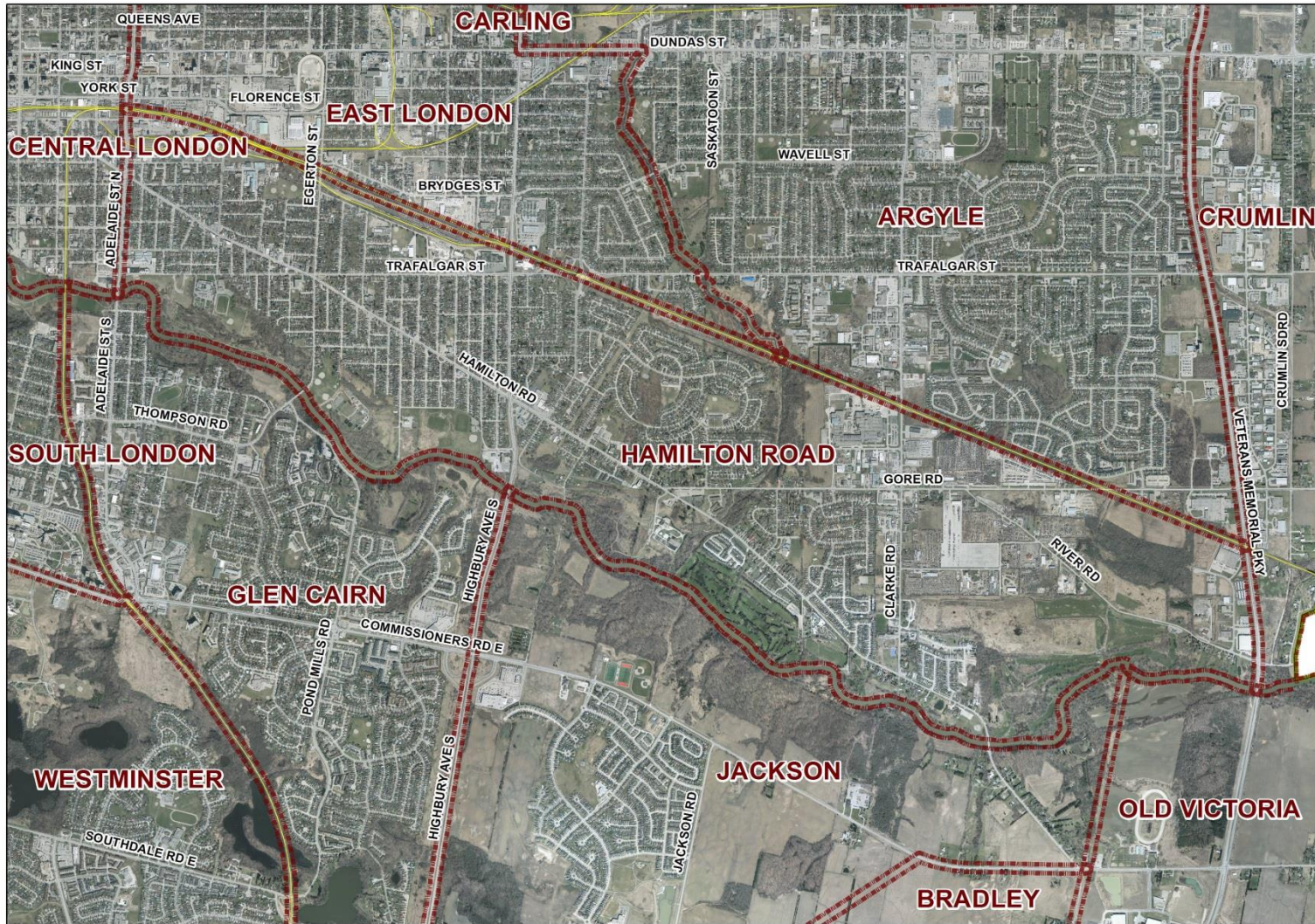
John-Paul Sousa

Planning Research Analyst

Direct: (519) 661-2500 ext. 5989 | email: jpsousa@london.ca

Date Created: Jan. 2014

Neighbourhood Profile -Hamilton Road Planning District



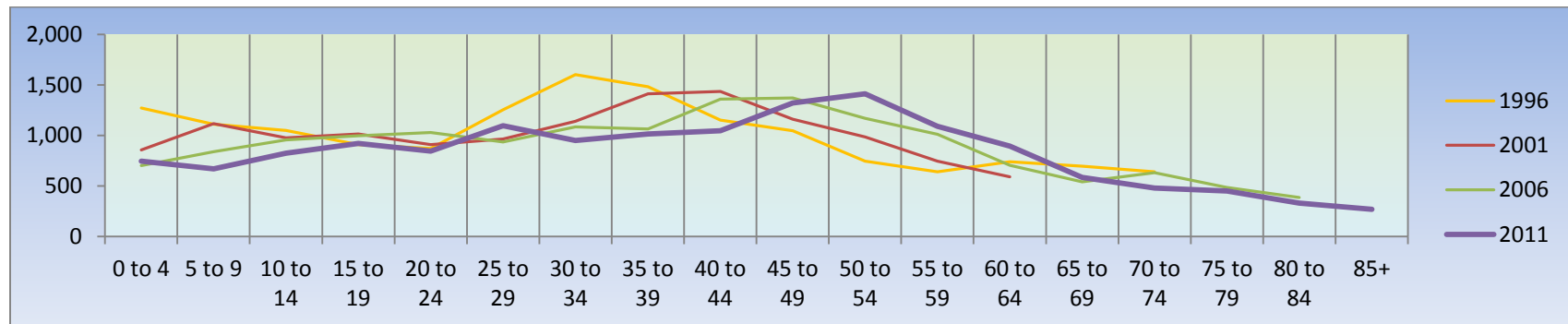
Coordinate System: NAD 1983 UTM Zone 17N
Projection: Transverse Mercator
Datum: North American 1983

Population Characteristics & Age Distribution

Hamilton Road Neighbourhood	1996	2001	2006	2011	Change From Previous Period	
Total Population	15,970	15,445	15,380	14,935	↓	(-3%)
Female	7,980	7,780	7,645	7,445	↓	(-3%)
Male	7,990	7,665	7,725	7,490	↓	(-3%)

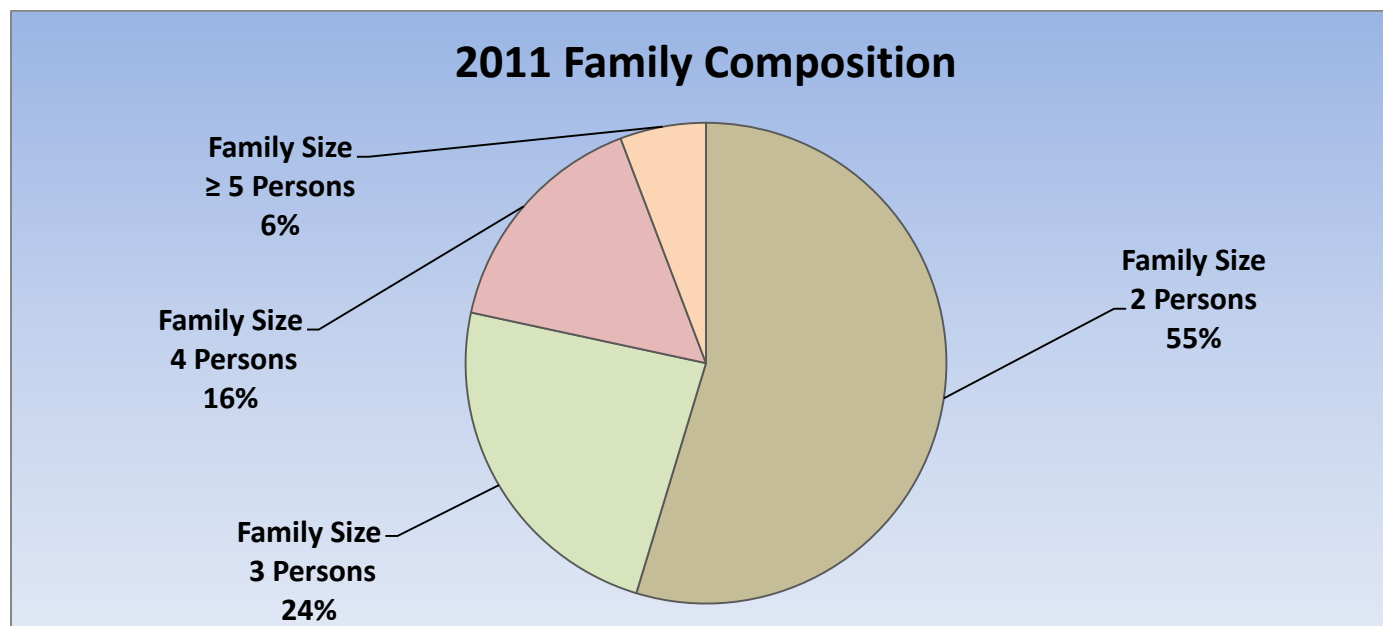
Age Structure	1996	2001	2006	2011	Change From Previous Period		As a % of Neighbourhood
0-19	4,340	3,960	3,490	3,160	↓	(-9%)	23%
0 to 4	1,270	855	700	745	↑	6%	6%
5 to 9	1,110	1,115	840	670	↓	(-20%)	5%
10 to 14	1,050	975	955	825	↓	(-13.6%)	6%
15 to 19	910	1,015	995	920	↓	(-8%)	7%
20-44	6,430	5,860	5,475	4,950	↓	(-10%)	37%
45-64	3,170	3,480	4,255	4,715	↑	11%	35%
65+	2,105	2,160	2,170	2,115	↓	(-3%)	16%
Median Age	N.A.	N.A.	N.A.	42			

2011 Census Age Cohort Breakout	Male	Female	Total	As a % of Neighbourhood
0 to 4	380	370	750	5.02%
5 to 9	315	355	670	5.02%
10 to 14	445	380	825	5.52%
15 to 19	475	445	920	6.15%
20 to 24	430	415	845	5.65%
25 to 29	575	525	1,100	7.36%
30 to 34	470	485	955	6.39%
35 to 39	520	495	1,015	6.79%
40 to 44	570	480	1,050	7.02%
45 to 49	645	675	1,320	8.83%
50 to 54	705	705	1,410	9.43%
55 to 59	545	540	1,085	7.26%
60 to 64	440	460	900	6.02%
65 to 69	295	290	585	3.91%
70 to 74	235	245	480	3.21%
75 to 79	210	235	445	2.98%
80 to 84	130	200	330	2.21%
85+	105	165	270	1.81%
Total	7,490	7,465	14,955	



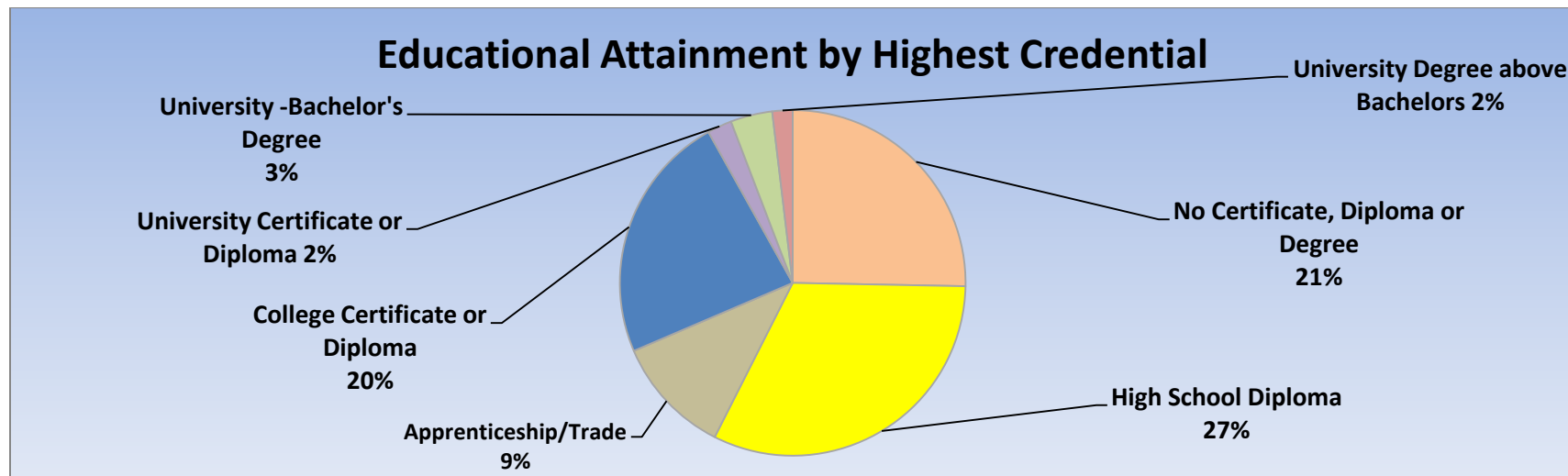
Marital Status	1996	2001	2006	2011	Change From Previous Period	As a % of Neighbourhood
Single	3,425	3,905	4,490	3,575	↓ (-20%)	24%
Married	6,610	6,025	5,710	5,325	↓ (-7%)	36%
Common-Law	830	1,170	1,520	1,550	↑ 2%	10%
Divorced	1,025	1,155	1,260	980	↓ (-22%)	7%
Separated	605	555	640	520	↓ (-19%)	3%
Widowed	870	870	780	740	↓ (-5%)	5%
Citizenship, Immigration & Ethnic Identity	1996	2001	2006	2011	Change From Previous Period	As a % of Neighbourhood
Citizenship						
Canadian Citizens	15,255	14,720	14,755	14,560	↓ (-1%)	97%
Non-Canadian Citizens	720	725	620	345	↓ (-44%)	2%
Immigration Status						
Canadian Born Population	12,865	12,420	12,410	12,825	↑ 3%	86%
Foreign Born Population	3,105	2,930	2,920	2,030	↓ (-30%)	14%
Visible Minority Population	465	990	1,055	1,010	↓ (-4%)	7%
Aboriginal Identity Population	440	345	465	650	↑ 40%	4%

Family Composition	1996	2001	2006	2011	Change From Previous Period	As a % of Neighbourhood
Number of Census Families	4,460	4,425	4,500	4,330	↓ (-4%)	
Family Size - 2 Persons	2,115	2,130	2,415	2,365	↓ (-2%)	55%
Family Size - 3 Persons	950	1,060	1,015	1,025	↑ 1%	24%
Family Size - 4 Persons	990	875	750	685	↓ (-9%)	16%
Family Size - ≥ 5 Persons	410	365	320	250	↓ (-22%)	6%
Census Family - Average Size	3	3	3	2.70	↓	



Family Structure & Number of Children	1996	2001	2006	2011	Change From Previous Period	
Married Couples	3,270	3,000	2,820	2,635	↓	(-7%)
Without Children	1,455	1,380	1,405	1,325	↓	(-7%)
With Children	1,810	1,620	1,415	1,310	↓	(-7%)
Common-Law	415	585	760	775	↑	2%
Without Children	225	270	430	440	↑	2%
With Children	185	315	330	335	↑	2%
Lone Parent Families	780	835	925	920	↓	(<-1%)
Female Headed	675	685	780	710	↓	(-9%)
1 Child	370	385	490	445	↓	(-9%)
2 Children	240	195	210	195	↓	(-7%)
≥ 3 Children	70	100	80	70	↓	(-13%)
Male Headed	105	160	145	215	↑	48%
1 Child	60	90	95	160	↑	68%
2 Children	30	65	30	40	↑	33%
≥ 3 Children	15	0	20	15	↓	(-25%)

Educational Attainment by Credential	1996	2001	2006	2011	Change From Previous Period	As a % of Neighbourhood
No Certificate, Diploma or Degree	N.A.	2,880	3,425	3,200	↓ (-7%)	21%
High School Diploma or Equivalent	N.A.	N.A.	3,805	4,065	↑ 7%	27%
Apprenticeship, or Trade Certificate	625	1,500	1,355	1,405	↑ 4%	9%
College Certificate or Diploma	N.A.	1,830	2,400	2,950	↑ 23%	20%
University Certificate or Diploma	N.A.	N.A.	N.A.	290	— —	2%
University -Bachelor's Degree	N.A.	N.A.	430	495	↑ 15%	3%
University Degree above bachelor level (M.A. or PhD)	N.A.	N.A.	150	240	↑ 60%	2%

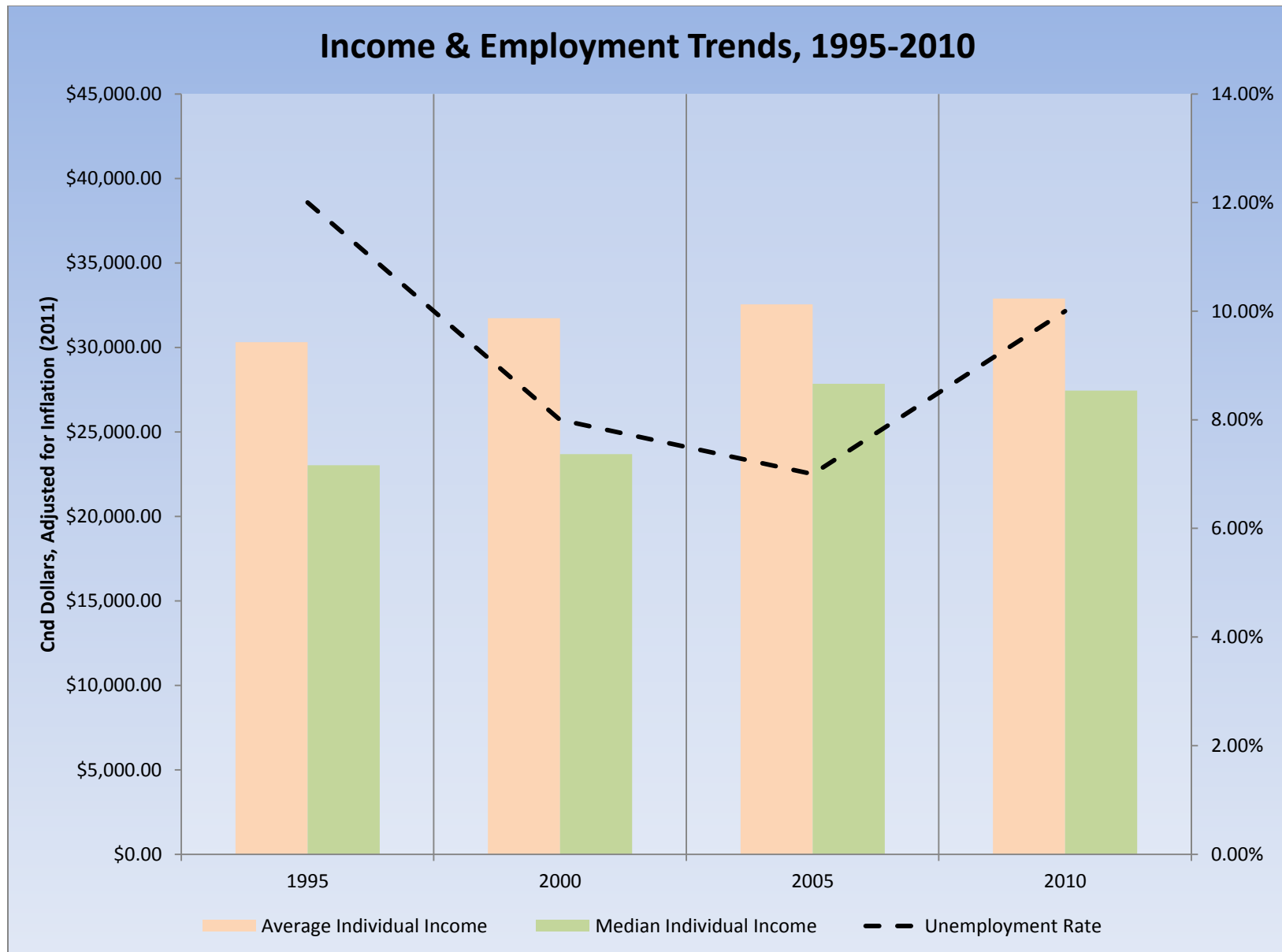


Housing by Structure Type & Tenure	1996	2001	2006	2011	Change From Previous Period	As a % of Neighbourhood
Total Occupied Dwellings	6,190	6,295	6,420	6,460	↑ 1%	
Single-Detached	4,675	4,765	4,760	4,810	↑ 1%	75%
Semi-Detached	255	160	185	200	↑ 1%	3%
Row House	365	420	415	400	↓ (-4%)	6%
Duplex	330	260	320	335	↑ 5%	5%
Apartment < 5 Storeys	515	680	725	710	↓ (-2%)	11%
Apartment ≥ 5 Storeys	0	0	0	0	— —	—
Number of Owned Dwellings	4,595	4,760	4,950	4,970	↑ <1%	
Owned as a % of Total	74%	76%	77%	77%	— —	
Number of Rented Dwellings	1,595	1,535	1,475	1,525	↑ 3%	
Rented as a % of Total	26%	24%	23%	23%	— —	
Average # of Rooms	7	7	7	6.7	↓	
Average # of Bedrooms	3	3	3	N.A.	—	
Average Gross Rent	\$632.00	\$596.00	\$688.00	\$719.00	↑ 4.5%	
Average Value of Dwelling	\$114,868.00	\$112,733.00	\$146,954.00	\$176,688.00	↑ 20%	

Labour Market Indicators	1996	2001	2006	2011	Change From Previous Period	As a % of Work Force
Total Labour Force ≥ 15 years	7,715	8,185	8,245	8,240	↓ (<-1%)	
Female	3,525	3,860	3,770	3,545	↓ (-6%)	47%
Male	4,190	4,335	4,475	4,400	↓ (-2%)	53%
Unemployment Rate	12%	8%	7%	10.00%	↑	
Female	10%	8%	7%	7.80%	↑	
Male	13%	8%	7%	11.90%	↑	
Employment Rate	N.A.	N.A.	N.A.	58%	–	
Participation Rate	62%	66%	64%	65%	↑	
Female	55%	61%	58%	60%	↑	
Male	68%	71%	70%	70%	–	
Labour Force by Sector						
Primary (Agriculture & Resources)	55	70	80	90	↑ 13%	2%
Secondary (Construction & Manufacturing)	2,230	2,495	2,305	2,620	↑ 14%	44%
Tertiary Services	5,105	5,415	5,695	4,750	↓ (-17%)	54%

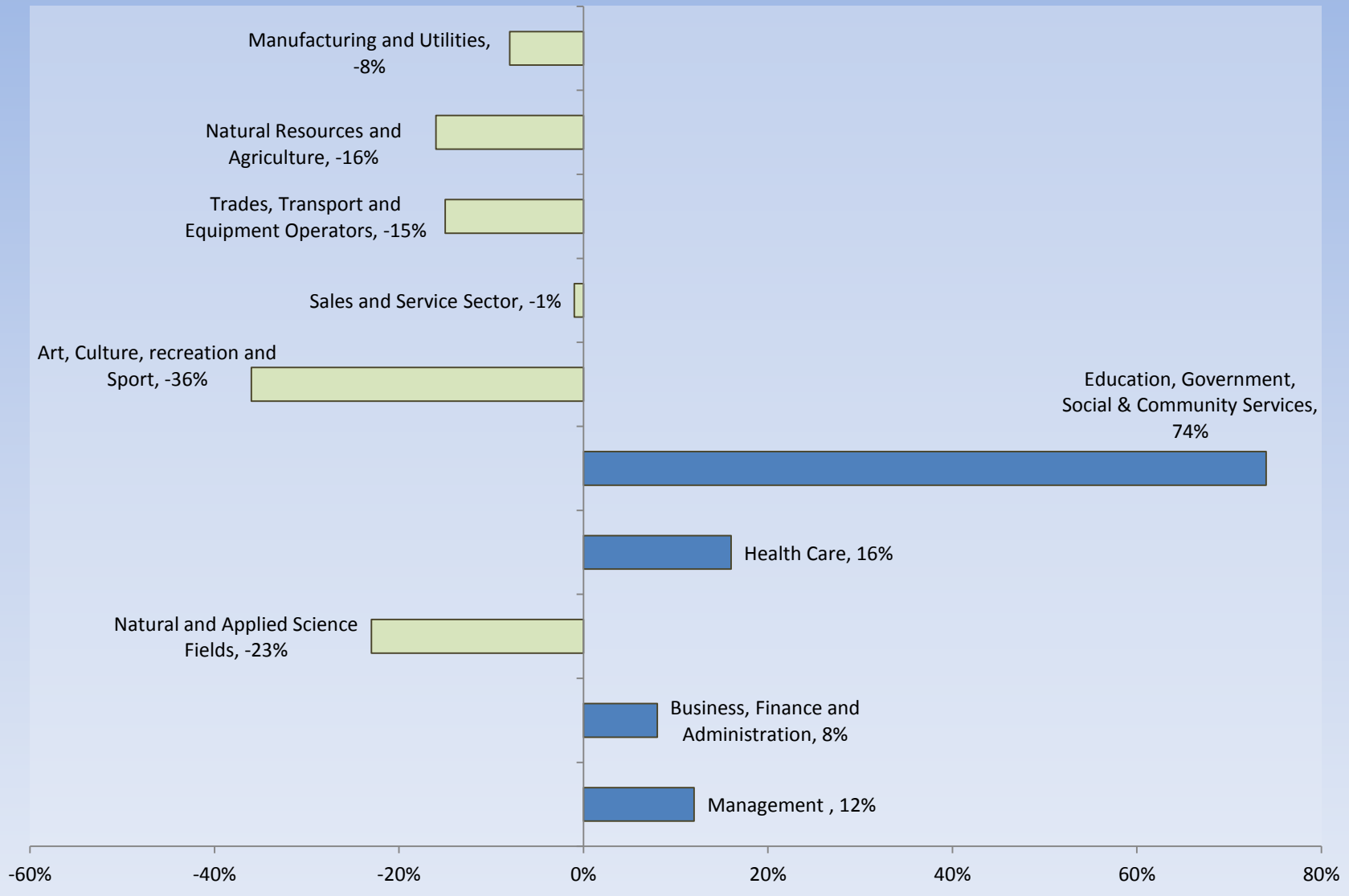
Income Characteristics of Economically Active Population	1996	2001	2006	2011	Change From Previous Period	
Individual Income						
Average Income	\$22,137.00	\$25,189.00	\$28,971.00	\$31,838.00	↑	10%
Median Income	\$16,819.00	\$18,806.00	\$24,789.00	\$26,565.00	↑	7%
Income by Gender						
Average Income – Male	\$26,349.00	\$29,905.00	\$34,668.00	\$34,165.00	↓	(-1%)
Average Income - Female	\$17,925.00	\$20,473.00	\$23,286.00	\$29,485.00	↑	27%
Median Income – Male	\$24,054.00	\$26,814.00	\$30,409.00	\$28,827.00	↓	(-5%)
Median Income - Female	\$15,714.00	\$17,139.00	\$19,866.00	\$24,285.00	↑	22%
Household Income						
Average Household Income	\$41,613.00	\$47,675.00	\$55,216.00	\$59,143.00	↑	7%
Median Household Income	\$38,474.00	\$43,718.00	\$48,707.00	\$50,249.00	↑	3%
Family Income						
Average Family Income	\$45,435.00	\$53,045.00	\$64,061.00	\$68,631.00	↑	7%
Median Family Income	\$43,477.00	\$50,530.00	\$59,442.00	\$62,977.00	↑	6%
Lone-Parent Families						
Average Family Income	N.A.	N.A.	N.A.	\$40,888.00		
Median Family Income	N.A.	N.A.	N.A.	\$37,062.00		

Data Note: Income figures based on previous reporting year (1995, 2000, 2005 & 2010).



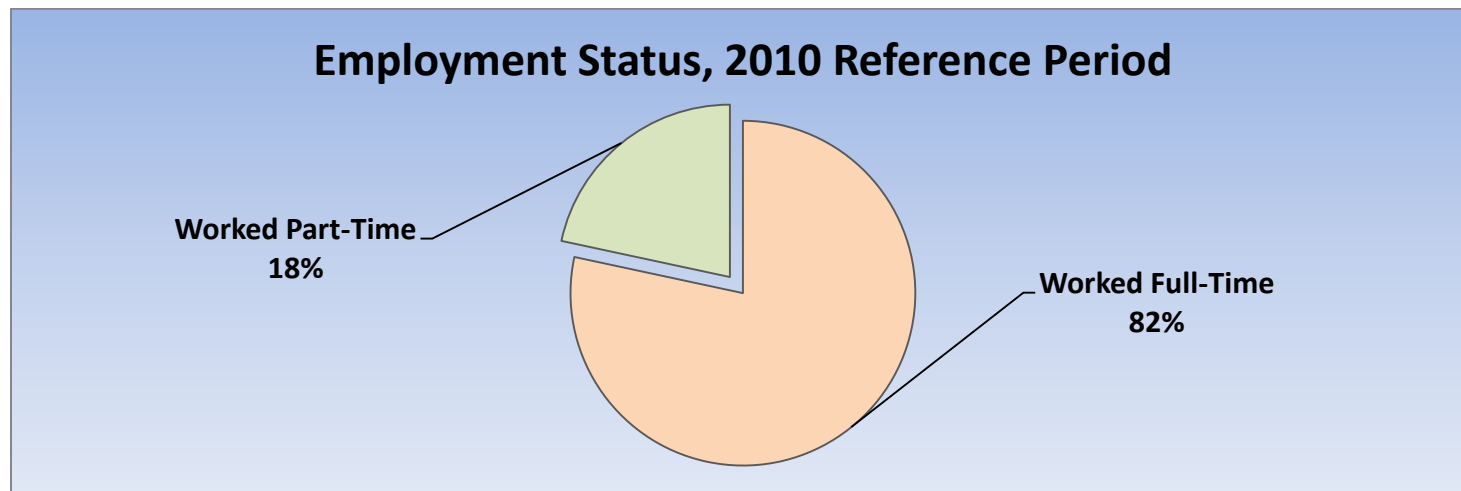
Labour Force by National Occupational Classification	1996	2001	2006	2011	Change From Previous Period	As a % of Labour Force
Management	455	415	445	500	↑ 12%	6%
Business, Finance and Administration	1,170	1,255	1,200	1,295	↑ 8%	16%
Natural and Applied Science Fields	275	295	430	330	↓ (-23%)	4%
Health Care	300	310	345	400	↑ 16%	5%
Education, Government, Social & Community Services	290	395	350	610	↑ 74%	8%
Art, Culture, recreation and Sport	105	160	140	90	↓ (-36%)	1%
Sales and Service Sector	2,100	2,065	2,030	2,025	↓ (<-1%)	25%
Trades, Transport and Equipment Operators	1,570	2,060	2,165	1,840	↓ (-15%)	23%
Natural Resources and Agriculture	75	100	120	90	↓ (-16%)	1%
Manufacturing and Utilities	1,070	915	850	780	↓ (-8%)	10%

Employment Trends by Occupational Breakout, 2006-2011



Class of Worker	1996	2001	2006	2011	Change From Previous Period	As a % Work Force
Employee	6,775	7,160	7,420	7,490	↑ 1%	94%
Female	3,150	3,420	3,410	3,600		
Male	3,625	3,740	4,010	3,880		
Self-Employed	615	785	630	485	↓ (-23%)	6%
Female	215	275	475	115		
Male	400	510	355	370		

Employment Status	1996	2001	2006	2011	Change From Previous Period	As a % of Active Labour Force
Worked Full-Time in 2010	N.A.	N.A.	N.A.	6,290	N.A.	82%
Worked Part-Time in 2010	N.A.	N.A.	N.A.	1,385	N.A.	18%



Mode of Transport to Work	1996	2001	2006	2011	Change From Previous Period	As a % of Neighbourhood
Automobile -As a Driver	4,940	5,265	5,620	5,810	↑ 3%	84%
Car-Pool	630	900	795	520	↓ (-35%)	7%
Public Transportation	385	535	470	440	↓ (-6%)	6%
Walked or Bicycled	490	470	420	105	↓ (-75%)	2%
Other Modes	50	45	95	70	↓ (-26%)	1%
Median Commuting Duration	N.A.	N.A.	N.A.	15.6 min		

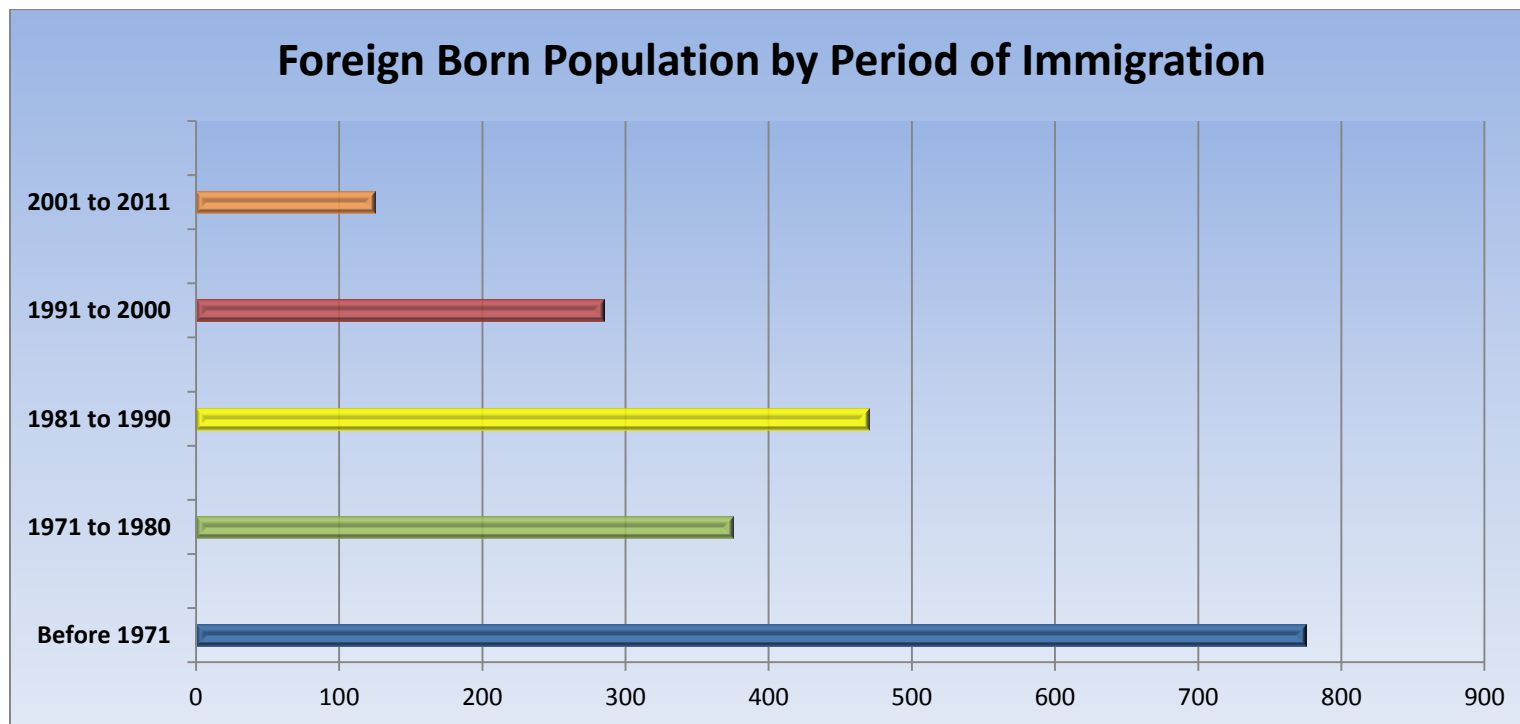
Place of Work	1996	2001	2006	2011	Change From Previous Period	As a % of Work Force
Worked at Home	285	260	245	295	↑ 20%	4%
Worked at a Fixed Address	5,945	6,235	6,325	6,055	↓ (-4%)	82%
No Fixed Workplace Address	565	990	1,080	1,055	↓ (-2%)	14%
Worked within Municipality	5,305	5,635	5,460	N.A.	— —	
Work in a different Municipality	635	605	870	N.A.	— —	
Worked outside Canada	10	30	40	0	↓ (-100%)	

Mobility/Migration Status	1996	2001	2006	2011	Change From Previous Period	As a % of Neighbourhood
Lived at the same address 5 years ago	8,670	8,950	8,965	9,015	↑	64%
Moved sometime with the last 5 years	6,030	5,635	5,695	5,050	↓ (-11%)	36%
Internal Migrants	1,105	1,065	1,145	1,025	↓ (-10%)	94%
- Intra-provincial	985	930	1,030	870	↓	
- Inter-provincial	120	135	125	155	↑	
External Migrants	140	130	160	65	↓ (-60%)	6%
Lived at the same address 1 years ago	13,590	13,060	13,345	13,185	↓ (-1%)	91%
Moved sometime with the last year	2,175	2,205	1,905	1,295	↓ (-32%)	9%
Internal Migrants	380	340	330	275	↓ (-17%)	93%
- Intra-provincial	330	325	305.	230	↓ (-25%)	
- Inter-provincial	55	20	25	20	↓ (-20%)	
External Migrants	20	60	55	20	↓ (-64%)	7%

Place of Birth	1996	2001	2006	2011	Change From Previous Period	As a % of Neighbourhood
Total Immigrant Population	N.A.	N.A.	2,920	2,030	↓ (-30%)	14%
Place of Birth by Continent						
North America (US only)	N.A.	N.A.	100	75	↓ (-25%)	1%
Africa	N.A.	N.A.	20	25	↑ 25%	<1%
Asia	N.A.	N.A.	175	170	↓ (-3%)	1%
Caribbean	N.A.	N.A.	80	70	↓ (-13%)	0%
Central and South America	N.A.	N.A.	160	185	↑ 16%	<1%
Europe	N.A.	N.A.	2,275	1,465	↓ (-36%)	10%
Recent Immigration by Continent, 2006-2011						
Recent Immigrants	N.A.	N.A.	150	40	↓ (-73%)	<1%
North America (US only)	N.A.	N.A.	10	0	↓ (-100%)	<1%
Africa	N.A.	N.A.	10	0	↓ (-100%)	0%
Asia	N.A.	N.A.	30	20	↓ (-33%)	<1%
Caribbean	N.A.	N.A.	0	0	— —	0%
Central and South America	N.A.	N.A.	0	15	↑ 100%	0%
Europe	N.A.	N.A.	55	0	↓ (-100%)	<1%

Immigration by Place of Birth	1996	2001	2006	2011	Change From Previous Period		As a % of Neighbourhood
1. Portugal	N.A.	N.A.	810	535	↓	(-34%)	4%
2. United Kingdom	N.A.	N.A.	380	255	↓	(-33%)	2%
3. Italy	N.A.	N.A.	365	190	↓	(-48%)	1%
4. Poland	N.A.	N.A.	230	125	↓	(-46%)	1%
5. El Salvador	N.A.	N.A.	N.A.	110	—	—	1%
6. United States of America	N.A.	N.A.	100	75	↓	(-25%)	1%
7. Germany	N.A.	N.A.	N.A.	75	—	—	1%
8. Jamaica	N.A.	N.A.	N.A.	70	—	—	<1%
9. N.A.	N.A.	N.A.	N.A.	N.A.			
10. N.A.	N.A.	N.A.	N.A.	N.A.			

Period of Immigration	1996	2001	2006	2011	Change From Previous Period	As a % of Neighbourhood
Before 1971	N.A.	N.A.	1,220	775	↓ (-36%)	5%
1971 to 1980	N.A.	N.A.	495	375	↓ (-24%)	3%
1981 to 1990	N.A.	N.A.	750	470	↓ (-37%)	3%
1991 to 2000	N.A.	N.A.	310	285	↓ (-8%)	2%
2001 to 2011	N.A.	N.A.	145	125	↓ (-14%)	1%



Language	1996	2001	2006	2011	Change From Previous Period		As a % of Neighbourhood
Knowledge of Official Languages							
English Only	15,005	14,445	14,420	14,045	↓	(-3%)	94%
French Only	10	10	15	5	↓	(-67%)	<1%
English and French	560	730	N.A.	655	—	—	4%
Neither English or French	405	270	270	205	↓	(-24%)	1%
Language Spoken Most Often at Home							
English	14,030	12,760	13,635	13,565	↓	(<-1%)	91%
French	10	35	40	30	↓	(-25%)	<1%
Non-Official Language	1,570	825	2,570	970	↓	(-62%)	6%
Mother Tongue *							
English	12,810	12,760	12,130	12,445	↑	3%	83%
French	100	150	135	170	↑	26%	1%
Non-Official Language	2,815	2,885	2,970	2,135	↓	(-28%)	14%

* Statistics Canada defines 'mother tongue' as the first language learned in childhood and still understood by the individual at the time of census reporting.

Non-Official Languages Spoken Top 10 Reported	1996	2001	2006	2011	Change From Previous Period		As a % of Neighbourhood
1. Portuguese	N.A.	1,110	1,205	875	↓	(-27%)	6%
2. Spanish	N.A.	300	445	375	↓	(-16%)	3%
3. Italian	N.A.	470	535	275	↓	(-49%)	2%
4. Polish	N.A.	470	350	195	↓	(-44%)	1%
5. German	N.A.	210	110	165	↑	50%	1%
6. Dutch	N.A.	120	110	100	↓	(-9%)	1%
7. N.A.	N.A.	N.A.	N.A.	N.A.	—	—	—
8. N.A.	N.A.	N.A.	N.A.	N.A.	—	—	—
9. N.A.	N.A.	N.A.	N.A.	N.A.	—	—	—
10. N.A.	N.A.	N.A.	N.A.	N.A.	—	—	—

Religious Identification	1996	2001	2006	2011	Change From Previous Period	As a % of Neighbourhood
Buddhist	N.A.	N.A.	N.A.	45		<1%
Christian	N.A.	N.A.	N.A.	9,230		62%
Anglican	N.A.	N.A.	N.A.	1,390		9%
Baptist	N.A.	N.A.	N.A.	465		3%
Catholic	N.A.	N.A.	N.A.	3,855		26%
Orthodox	N.A.	N.A.	N.A.	40		<1%
Lutheran	N.A.	N.A.	N.A.	120		<1%
Pentecostal	N.A.	N.A.	N.A.	150		<1%
Presbyterian	N.A.	N.A.	N.A.	490		3%
United Church	N.A.	N.A.	N.A.	1,440		10%
Other Christian	N.A.	N.A.	N.A.	1,285		9%
Hindu	N.A.	N.A.	N.A.	45		<1%
Jewish	N.A.	N.A.	N.A.	30		<1%
Muslim	N.A.	N.A.	N.A.	60		<1%
Sikh	N.A.	N.A.	N.A.	N.A.		
Aboriginal Spirituality	N.A.	N.A.	N.A.	N.A.		

Notes:

- (1) Source Data –Statistics Canada. 1996-2011 Census Data, Customized Profiles. Ottawa, Canada
- (2) Data also derived from Statistics Canada’s National Household Survey (NHS)
- (3) Customized Community and Neighbourhood Profiles tabulated and compiled by the City of London’s Planning Division –Policy Planning and Research Section.