

Glanworth Neighbourhood Profile

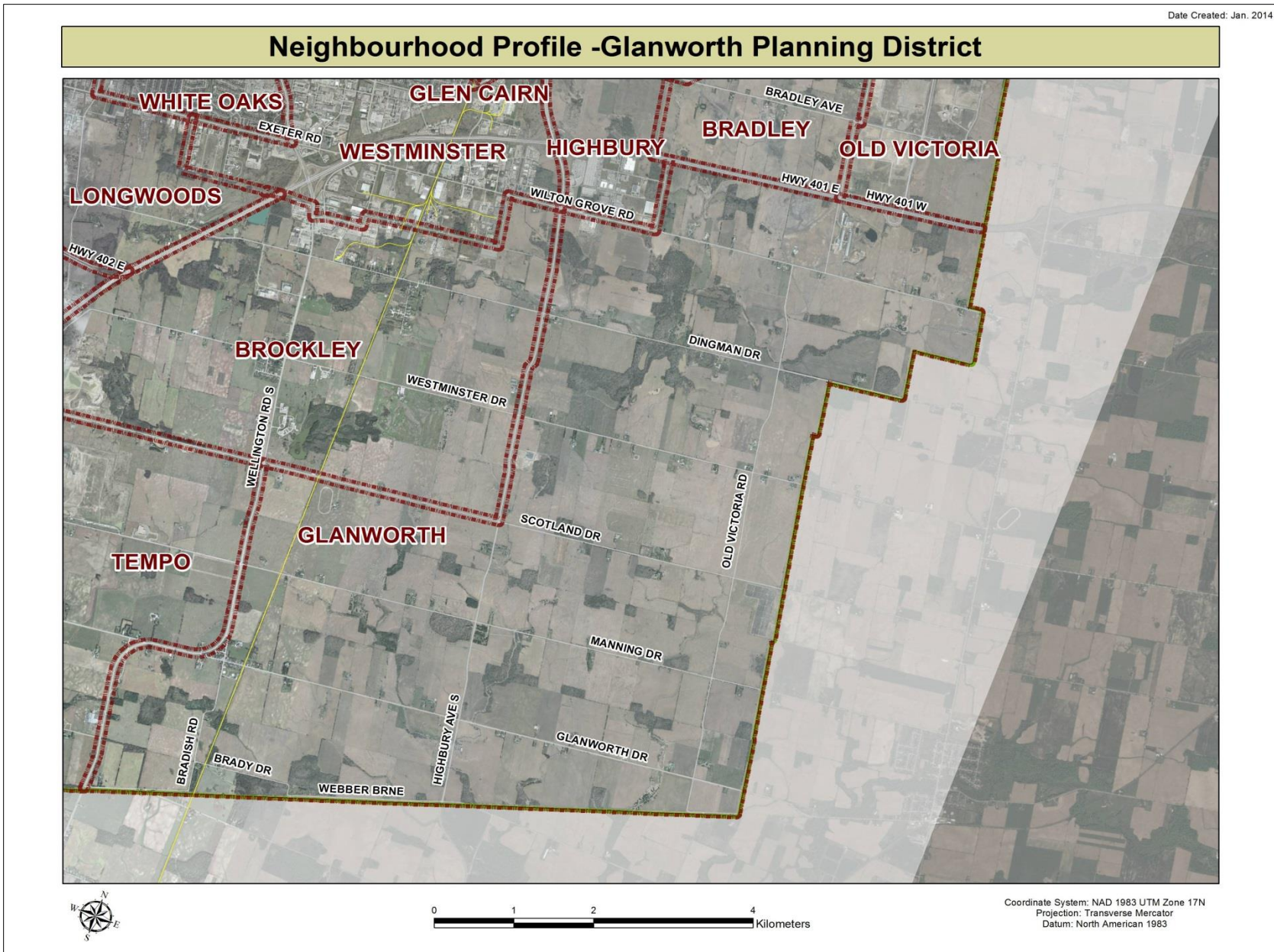
For further information contact:

John-Paul Sousa

Planning Research Analyst

Direct: (519) 661-2500 ext. 5989 | email: jpsousa@london.ca

Date Created: Jan. 2014

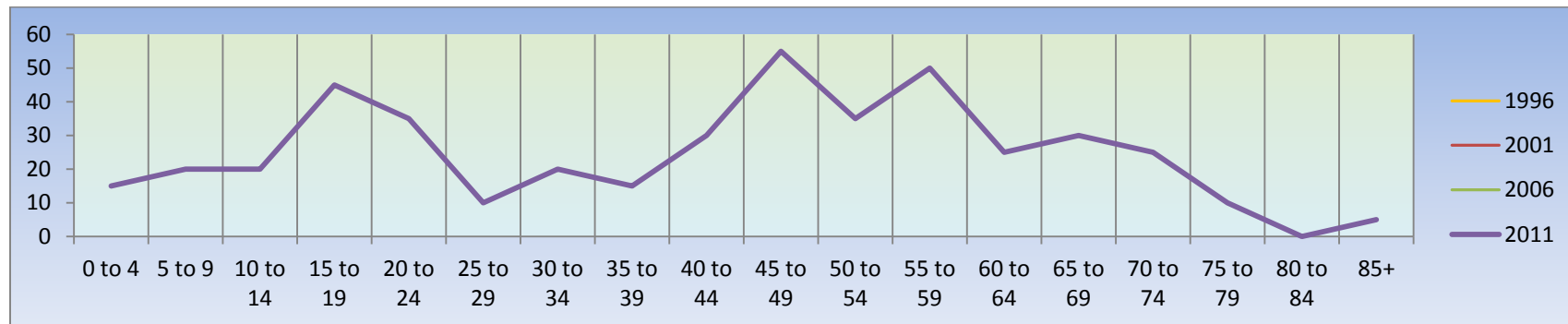


Population Characteristics & Age Distribution

Glanworth Neighbourhood	1996	2001	2006	2011	Change From Previous Period	
Total Population	1,000	465	490	460	↓	(-6%)
Female	490	285	245	220	↓	(-10%)
Male	510	180	245	245	—	—

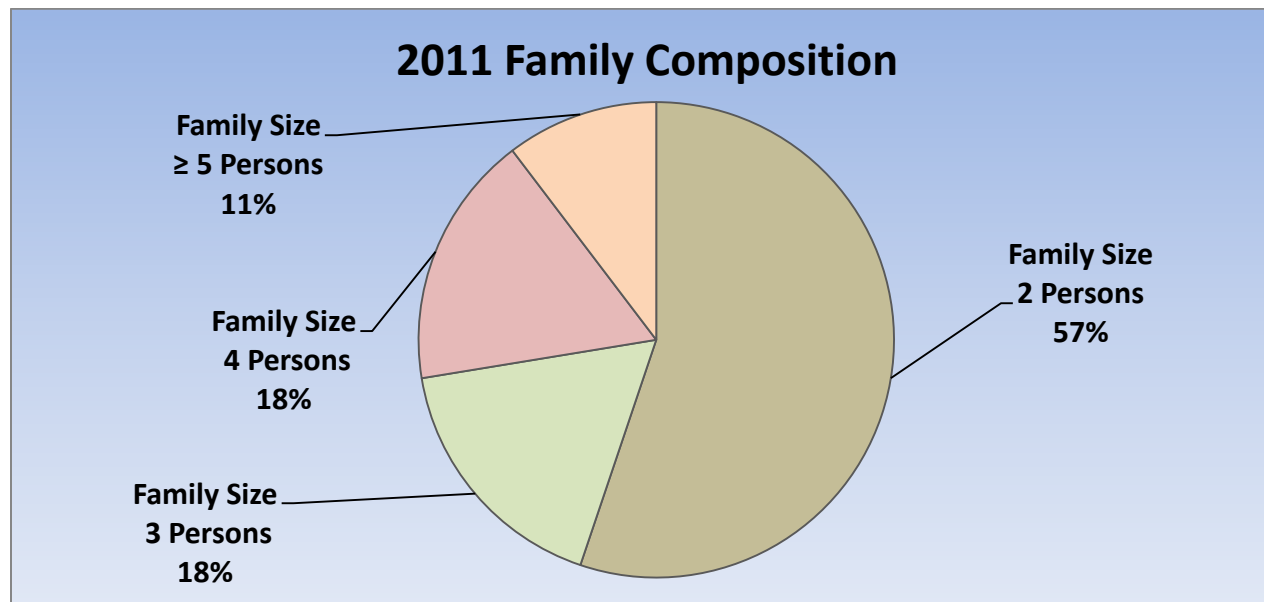
Age Structure	1996	2001	2006	2011	Change From Previous Period	As a % of Neighbourhood
0-19	280	130	95	100	↑	22%
0 to 4	N.A.	N.A.	N.A.	N.A.		
5 to 9	N.A.	N.A.	N.A.	N.A.		
10 to 14	N.A.	N.A.	N.A.	N.A.		
15 to 19	N.A.	N.A.	N.A.	N.A.		
20-44	365	175	135	120	↓	26%
45-64	240	110	175	170	↓	37%
65+	130	70	95	80	↓	17%
Median Age	N.A.	N.A.	N.A.	46.5		

2011 Census Age Cohort Breakout	Male	Female	Total	As a % of Neighbourhood
0 to 4	5	10	15	3.37%
5 to 9	15	5	20	4.49%
10 to 14	10	10	20	4.49%
15 to 19	25	20	45	10.11%
20 to 24	20	15	35	7.87%
25 to 29	5	5	10	2.25%
30 to 34	10	10	20	4.49%
35 to 39	5	10	15	3.37%
40 to 44	15	15	30	6.74%
45 to 49	30	25	55	12.36%
50 to 54	15	20	35	7.87%
55 to 59	25	25	50	11.24%
60 to 64	15	10	25	5.62%
65 to 69	15	15	30	6.74%
70 to 74	15	10	25	5.62%
75 to 79	5	5	10	2.25%
80 to 84	0	0	0	0%
85+	0	5	5	1.12%
Total	230	215	445	



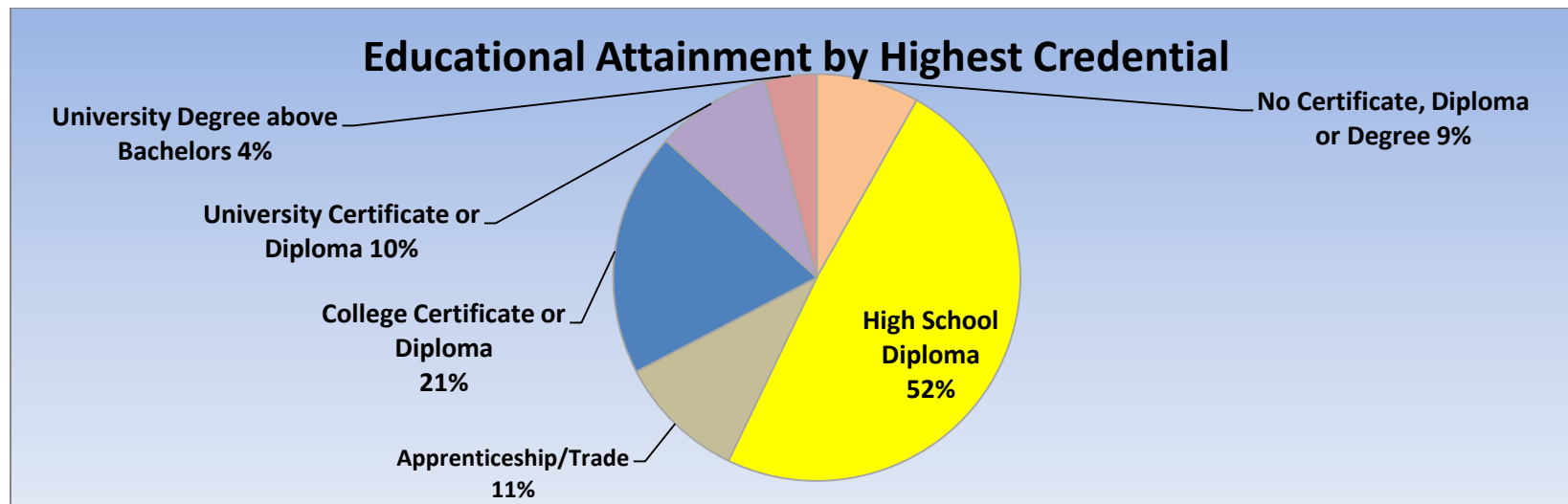
Marital Status	1996	2001	2006	2011	Change From Previous Period	As a % of Neighbourhood
Single	195	105	150	110	↓	24%
Married	485	210	255	225	↓	49%
Common-Law	40	10	0	20	↑	4%
Divorced	35	15	15	25	↑	5%
Separated	20	10	0	5	↑	1%
Widowed	45	35	25	20	↓	4%
Citizenship, Immigration & Ethnic Identity	1996	2001	2006	2011	Change From Previous Period	As a % of Neighbourhood
Citizenship						
Canadian Citizens	940	435	470	460	↓	100%
Non-Canadian Citizens	60	25	25	0	↓	0%
Immigration Status						
Canadian Born Population	850	415	470	395	↓	86%
Foreign Born Population	130	45	25	110	↑	24%
Visible Minority Population	45	0	10	0	↓	0%
Aboriginal Identity Population	0	0	0	0	—	0%

Family Composition	1996	2001	2006	2011	Change From Previous Period	As a % of Neighbourhood
Number of Census Families	295	125	135	140	↑	
Family Size - 2 Persons	135	55	70	80	↑	57%
Family Size - 3 Persons	60	25	25	25	–	18%
Family Size - 4 Persons	55	15	20	25	↑	18%
Family Size - ≥ 5 Persons	40	25	25	15	↓	11%
Census Family - Average Size	3.10	3.20	3.10	2.90		



Family Structure & Number of Children	1996	2001	2006	2011	Change From Previous Period
Married Couples	240	105	125	115	↓
Without Children	95	45	60	55	↓
With Children	145	60	70	55	↓
Common-Law	20	15	10	10	—
Without Children	15	15	N.A.	N.A.	
With Children	10	N.A.	N.A.	N.A.	
Lone Parent Families	35	15	10	15	↑
Female Headed	25	15	N.A.	N.A.	
1 Child	N.A.	N.A.	N.A.	N.A.	
2 Children	N.A.	N.A.	N.A.	N.A.	
≥ 3 Children	N.A.	N.A.	N.A.	N.A.	
Male Headed	10	N.A.	N.A.	N.A.	
1 Child	N.A.	N.A.	N.A.	N.A.	
2 Children	N.A.	N.A.	N.A.	N.A.	
≥ 3 Children	N.A.	N.A.	N.A.	N.A.	

Educational Attainment by Credential	1996	2001	2006	2011	Change From Previous Period	As a % of Neighbourhood
No Certificate, Diploma or Degree	N.A.	N.A.	65	40	↓	9%
High School Diploma or Equivalent	N.A.	N.A.	130	240	↑	52%
Apprenticeship, or Trade Certificate	N.A.	N.A.	50	50	–	11%
College Certificate or Diploma	N.A.	N.A.	50	95	↑	21%
University Certificate or Diploma	N.A.	N.A.	0	45	↑	10%
University -Bachelor's Degree	N.A.	N.A.	40	0	↓	0%
University Degree above bachelor level (M.A. or PhD)	N.A.	N.A.	10	20	↑	4%

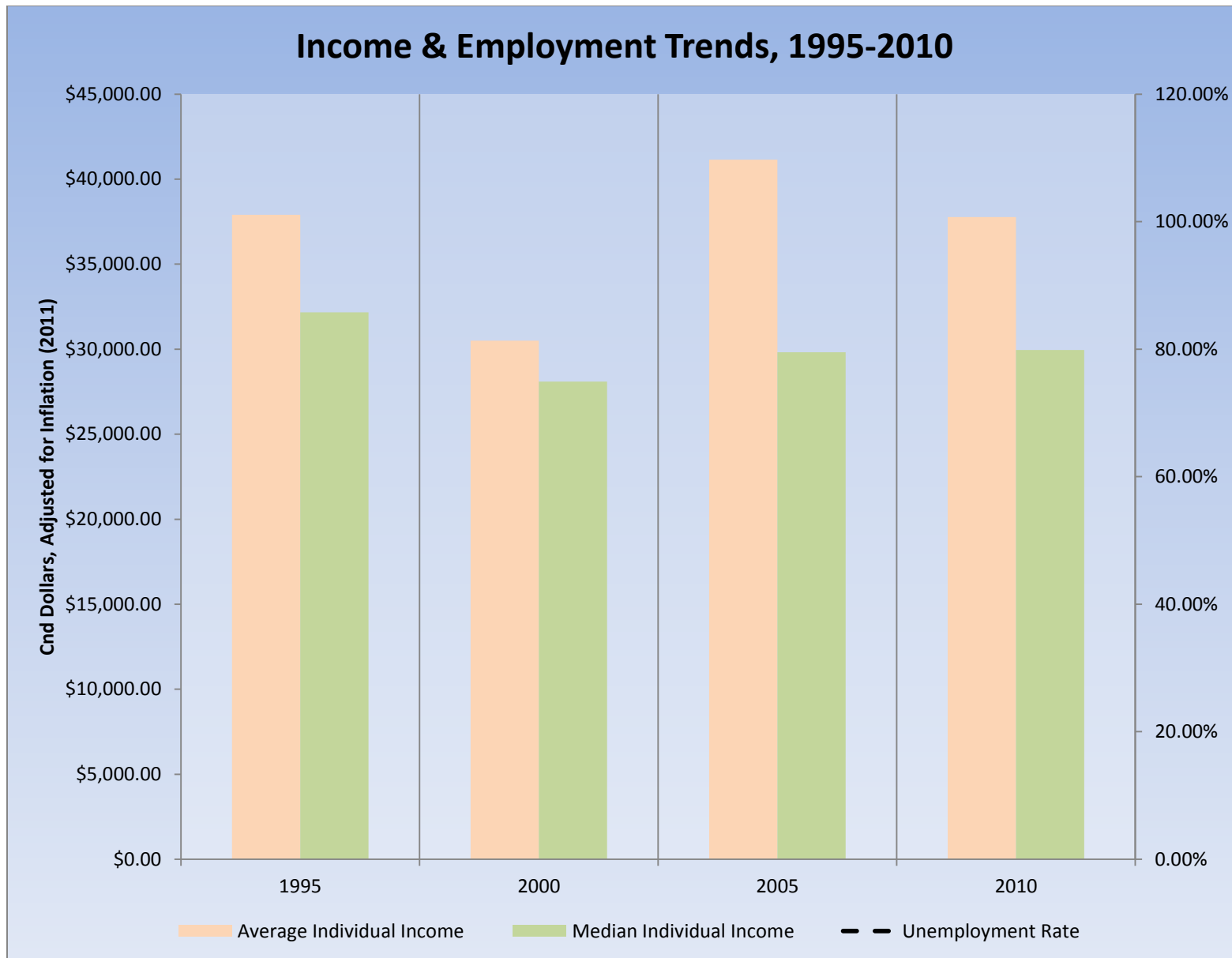


Housing by Structure Type & Tenure	1996	2001	2006	2011	Change From Previous Period		As a % of Neighbourhood
Total Occupied Dwellings	335	175	185	185	—	—	
Single-Detached	295	170	170	170	—	—	92%
Semi-Detached	20	0	10	5	↓		3%
Row House	0	0	0	0	—		0
Duplex	20	0	0	5	↑		3%
Apartment < 5 Storeys	0	0	0	0	—		0%
Apartment ≥ 5 Storeys	0	0	0	0	—		0%
Number of Owned Dwellings	250	135	165	150	↓		
Owned as a % of Total	75%	79%	89%	86%	↓		
Number of Rented Dwellings	85	35	20	25	↑		
Rented as a % of Total	25%	21%	11%	24%	↑		
Average # of Rooms	8.10	7.60	8.20	8.7	↑		
Average # of Bedrooms	3.30	3.10	3.30	N.A.			
Average Gross Rent	\$635.00	\$481.00	\$769.00	\$657.00	↓	(-15%)	
Average Value of Dwelling	\$206,403.00	\$173,822.00	\$270,331.00	\$364,706.00	↑	35%	

Labour Market Indicators	1996	2001	2006	2011	Change From Previous Period	As a % of Neighbourhood
Total Labour Force ≥ 15 years	555	310	325	365	↑	
Female	240	175	170	185	↑	51%
Male	315	135	155	175	↑	48%
Unemployment Rate	7.10%	N.A.	N.A.	N.A.	↑	
Female	6.20%	N.A.	N.A.	N.A.		
Male	7.90%	N.A.	N.A.	N.A.		
Employment Rate	N.A.	N.A.	N.A.	75.80%		
Participation Rate	70%	82%	72%	76.80%	↑	
Female	62.30%	78%	72%	68.50%	↓	
Male	77.80%	87%	72%	85.40%	↑	
Labour Force by Sector						
Primary (Agriculture & Resources)	60	50	35	0	↓	0%
Secondary (Construction & Manufacturing)	120	55	75	75	–	23%
Tertiary Services	315	210	205	245	↑	77%

Income Characteristics of Economically Active Population	1996	2001	2006	2011	Change From Previous Period
Individual Income					
Average Income	\$27,636.00	\$24,263.00	\$36,765.00	\$36,642.00	↓
Median Income	\$23,449.00	\$22,350.00	\$26,642.00	\$29,054.00	↓
Income by Gender					
Average Income – Male	\$34,861.00	\$30,176.00	\$45,354.00	\$43,694.00	↓
Average Income - Female	\$20,411.00	\$18,351.00	\$28,786.00	\$31,166.00	↑
Median Income – Male	\$27,885.00	\$28,850.00	\$27,255.00	\$38,795.00	↑
Median Income - Female	\$19,014.00	\$15,850.00	\$22,455.00	\$17,943.00	↓
Household Income					
Average Household Income	\$62,758.00	\$49,416.00	\$66,309.00	\$96,636.00	↑
Median Household Income	\$51,101.00	\$46,086.00	\$84,756.00	\$91,568.00	↑
Family Income					
Average Family Income	\$64,814.00	\$59,800.00	\$96,070.00	\$96,701.00	↑
Median Family Income	\$51,884.00	\$61,742.00	\$72,362.00	\$100,386.00	↑
Lone-Parent Families					
Average Family Income	N.A.	N.A.	N.A.	\$61,046.00	
Median Family Income	N.A.	N.A.	N.A.	\$66,622.00	

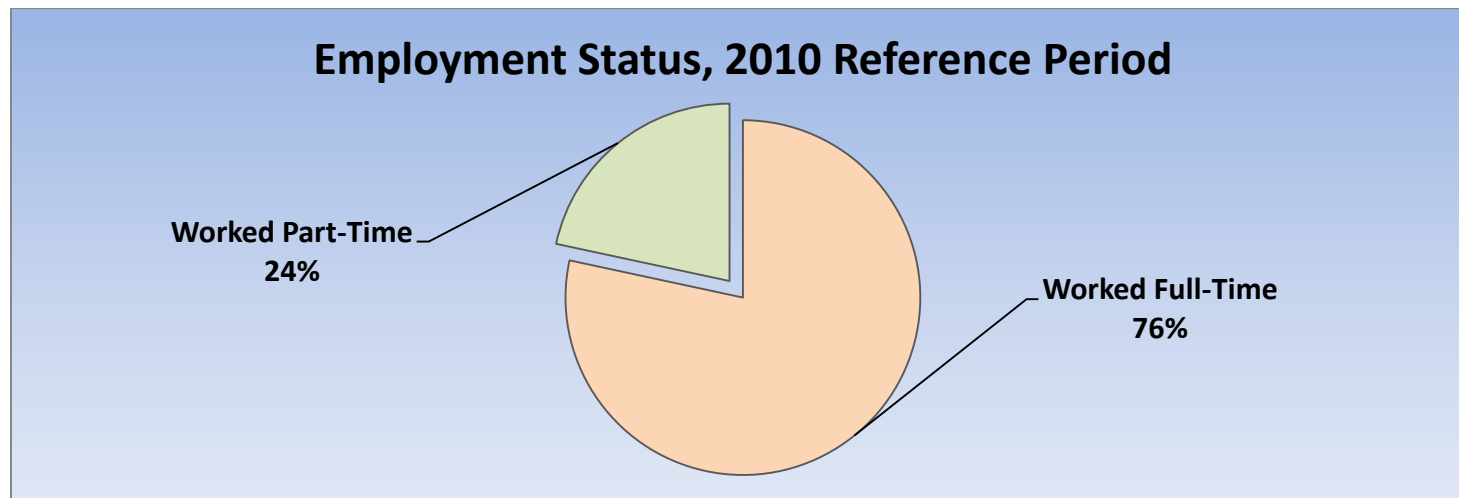
Data Note: Income figures based on previous reporting year (1995, 2000, 2005 & 2010).



Labour Force by National Occupational Classification	1996	2001	2006	2011	Change From Previous Period	As a % of Labour Force
Management	30	10	35	80	↑	25%
Business, Finance and Administration	115	40	55	35	↓	11%
Natural and Applied Science Fields	15	0	15	0	↓	0%
Health Care	10	15	10	35	↑	11%
Education, Government, Social & Community Services	20	10	15	45	↑	14%
Art, Culture, recreation and Sport	20	10	20	0	↓	0%
Sales and Service Sector	130	80	50	50	—	16%
Trades, Transport and Equipment Operators	100	60	70	75	↑	23%
Natural Resources and Agriculture	65	60	35	0	↓	0%
Manufacturing and Utilities	50	20	15	0	↓	0%

Class of Worker	1996	2001	2006	2011	Change From Previous Period	As a % Neighbourhood
Employee	470	220	225	245	↓	67%
Female	220	145	130	135		
Male	250	75	95	110		
Self-Employed	85	90	85	120	↑	33%
Female	30	30	25	70		
Male	60	60	60	50		

Employment Status	1996	2001	2006	2011	Change From Previous Period	As a % of Active Labour Force
Worked Full-Time in 2010	N.A.	N.A.	N.A.	270	N.A.	76%
Worked Part-Time in 2010	N.A.	N.A.	N.A.	85	N.A.	24%



Mode of Transport to Work	1996	2001	2006	2011	Change From Previous Period	As a % of Neighbourhood
Automobile -As a Driver	330	210	240	240	—	87%
Car-Pool	40	20	20	35	↑	13%
Public Transportation	0	0	0	0	—	0%
Walked or Bicycled	35	20	0	0	—	0%
Other Modes	10	0	0	0	—	0%
Median Commuting Duration	N.A.	N.A.	N.A.	15.3 min.		

Place of Work	1996	2001	2006	2011	Change From Previous Period	As a % of Neighbourhood
Worked at Home	95	100	50	80	↑	23%
Worked at a Fixed Address	345	270	220	220	—	62%
No Fixed Workplace Address	70	40	35	55	↑	15%
Worked within Municipality	260	135	155	N.A.	—	
Work in a different Municipality	60	65	55	N.A.	—	
Worked outside Canada	0	0	0	0	—	

Mobility/Migration Status	1996	2001	2006	2011	Change From Previous Period	As a % of Neighbourhood
Lived at the same address 5 years ago	650	325	445	435	↓	85%
Moved sometime with the last 5 years	280	120	45	75	↑	15%
Internal Migrants	95	0	20	35	↑	100%
- Intra-provincial	95	0	10	30	↑	
- Inter-provincial	0	0	10	5	↓	
External Migrants	10	0	0	0		0%
Lived at the same address 1 years ago	835	395	485	475	↓	94%
Moved sometime with the last year	155	120	0	30	↑	6%
Internal Migrants	35	0	0	10	↑	100%
- Intra-provincial	35	0	0	N.A.		
- Inter-provincial	0	0	0	N.A.		
External Migrants	10	0	0	0		0%

Place of Birth	1996	2001	2006	2011	Change From Previous Period	As a % of Neighbourhood
Total Immigrant Population	N.A.	N.A.	N.A.	110		24%
Place of Birth by Continent						
North America (US only)	N.A.	N.A.	N.A.	N.A.		
Africa	N.A.	N.A.	N.A.	N.A.		
Asia	N.A.	N.A.	N.A.	N.A.		
Caribbean	N.A.	N.A.	N.A.	N.A.		
Central and South America	N.A.	N.A.	N.A.	N.A.		
Europe	N.A.	N.A.	N.A.	N.A.		
Recent Immigration by Continent, 2006-2011						
Recent Immigrants	N.A.	N.A.	N.A.	N.A.		
North America (US only)	N.A.	N.A.	N.A.	N.A.		
Africa	N.A.	N.A.	N.A.	N.A.		
Asia	N.A.	N.A.	N.A.	N.A.		
Caribbean	N.A.	N.A.	N.A.	N.A.		
Central and South America	N.A.	N.A.	N.A.	N.A.		
Europe	N.A.	N.A.	N.A.	N.A.		

Immigration by Place of Birth	1996	2001	2006	2011	Change From Previous Period	As a % of Neighbourhood
1. United Kingdom	N.A.	N.A.	N.A.	105		23%

Period of Immigration	1996	2001	2006	2011	Change From Previous Period	As a % of Neighbourhood
Before 1971	N.A.	N.A.	N.A.	N.A.		
1971 to 1980	N.A.	N.A.	N.A.	N.A.		
1981 to 1990	N.A.	N.A.	N.A.	N.A.		
1991 to 2000	N.A.	N.A.	N.A.	N.A.		
2001 to 2011	N.A.	N.A.	N.A.	N.A.		

Language	1996	2001	2006	2011	Change From Previous Period	As a % of Neighbourhood
Knowledge of Official Languages						
English Only	970	450	440	450	↑	98%
French Only	0	0	0	0	—	0%
English and French	20	10	50	10	↓	2%
Neither English or French	0	0	0	0	—	0%
Language Spoken Most Often at Home						
English	945	430	460	430	↓	93%
French	0	0	30	5	↓	1%
Non-Official Language	35	0	0	25	↑	5%
Mother Tongue *						
English	910	435	435	410	↓	89%
French	0	0	40	5	↓	1%
Non-Official Language	85	20	10	45	↑	10%

* Statistics Canada defines 'mother tongue' as the first language learned in childhood and still understood by the individual at the time of census reporting.

Non-Official Languages Spoken Top 10 Reported	1996	2001	2006	2011	Change From Previous Period	As a % of Neighbourhood
N.A.	N.A.	N.A.	N.A.	N.A.		

Religious Identification	1996	2001	2006	2011	Change From Previous Period	As a % of Neighbourhood
Buddhist	N.A.	N.A.	N.A.	0		0%
Christian	N.A.	N.A.	N.A.	340		74%
Anglican	N.A.	N.A.	N.A.	55		12%
Baptist	N.A.	N.A.	N.A.	10		2%
Catholic	N.A.	N.A.	N.A.	140		30%
Orthodox	N.A.	N.A.	N.A.	0		0%
Lutheran	N.A.	N.A.	N.A.	0		0%
Pentecostal	N.A.	N.A.	N.A.	0		0%
Presbyterian	N.A.	N.A.	N.A.	25		5%
United Church	N.A.	N.A.	N.A.	100		22%
Other Christian	N.A.	N.A.	N.A.	0		0%
Hindu	N.A.	N.A.	N.A.	0		0%
Jewish	N.A.	N.A.	N.A.	0		0%
Muslim	N.A.	N.A.	N.A.	0		0%
Sikh	N.A.	N.A.	N.A.	0		0%
Aboriginal Spirituality	N.A.	N.A.	N.A.	0		0%

Notes:

- (1) Source Data –Statistics Canada. 1996-2011 Census Data, Customized Profiles. Ottawa, Canada
- (2) Data also derived from Statistics Canada’s National Household Survey (NHS)
- (3) Customized Community and Neighbourhood Profiles tabulated and compiled by the City of London’s Planning Division –Policy Planning and Research Section.