

Argyle Neighbourhood Profile

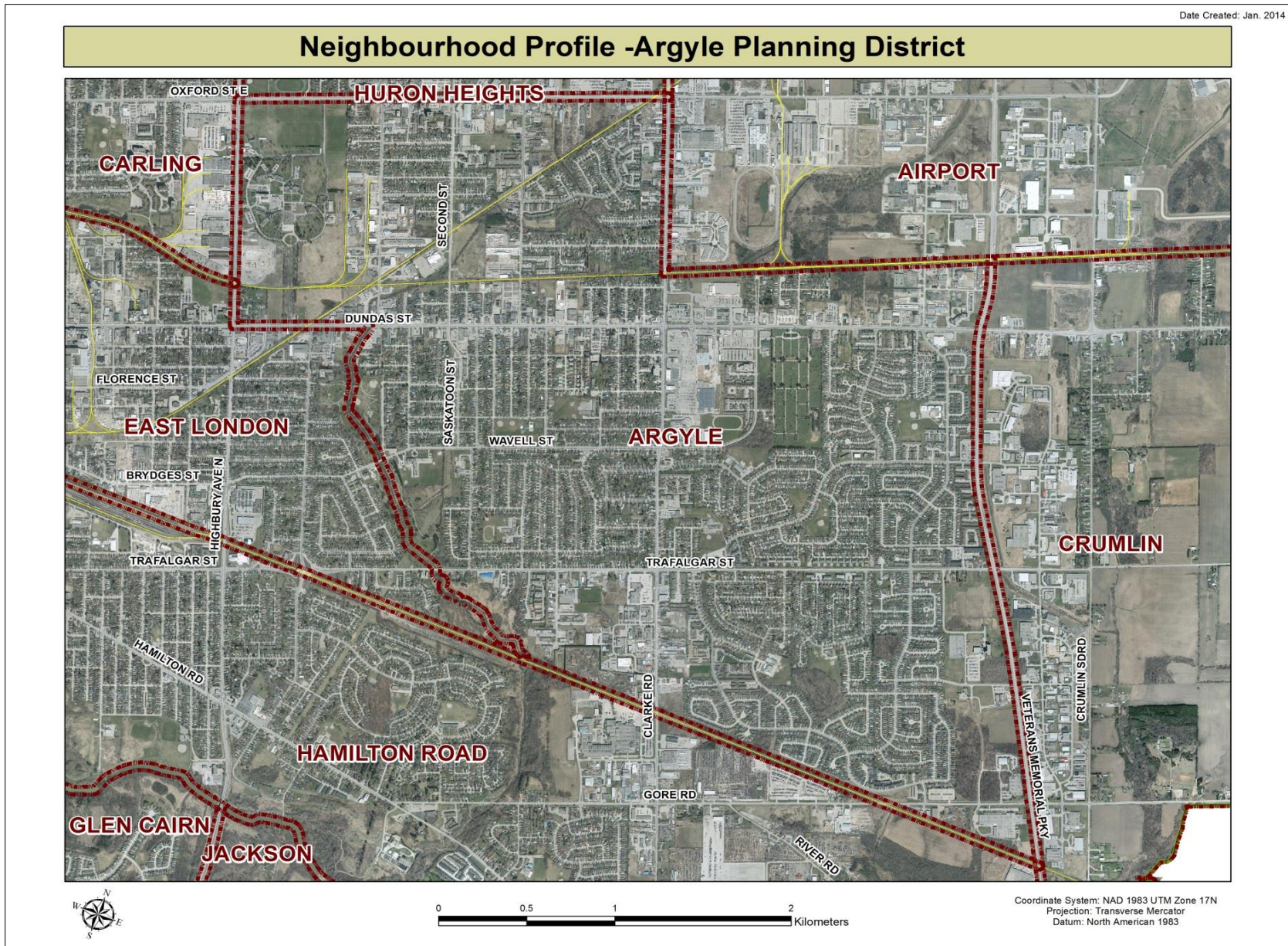
For further information contact:

John-Paul Sousa

Planning Research Analyst

Direct: (519) 661-2500 ext. 5989 | email: jpsousa@london.ca

Date Created: Jan. 2014

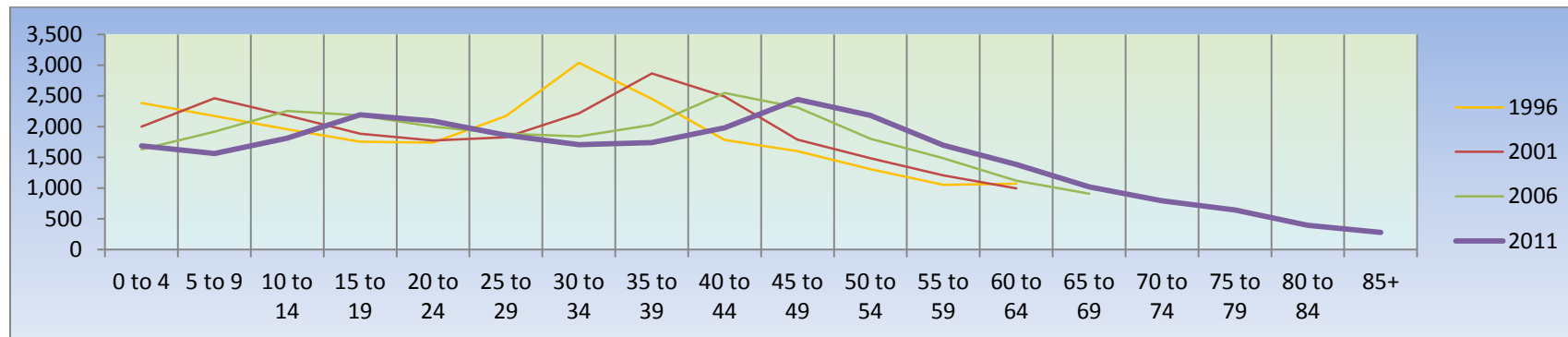


Population Characteristics & Age Distribution

Argyle Neighbourhood	1996	2001	2006	2011	Change From Previous Period	
Total Population	26,655	27,715	27,830	27,435	↓	(-1%)
Female	13,530	14,180	14,180	13,935	↓	(-2%)
Male	13,125	13,535	13,650	13,500	↓	(-1%)

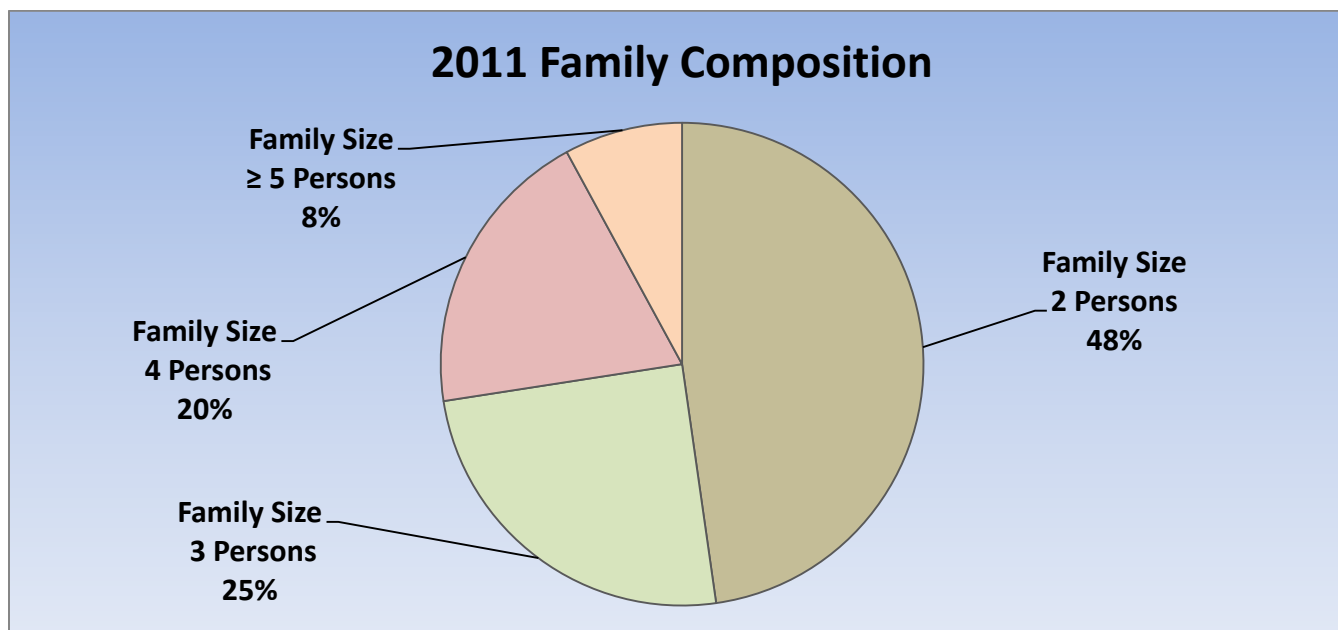
Age Structure	1996	2001	2006	2011	Change From Previous Period		As a % of Neighbourhood
0-19	8,265	8,525	8,090	7,245	↓	(-10%)	26%
0 to 4	2,385	2,000	1,655	1,685	↑	2%	6%
5 to 9	2,170	2,460	1,935	1,560	↓	(-19%)	6%
10 to 14	1,955	2,180	2,275	1,810	↓	(-20%)	7%
15 to 19	1,755	1,885	2,195	2,190	↓	(-<1%)	8%
20-44	11,175	11,165	10,295	9,375	↓	(-9%)	34%
45-64	5,025	5,470	6,715	7,700	↑	15%	28%
65+	2,170	2,550	2,840	3,135	↑	15%	11%
Median Age	NA	NA	NA	37.4	NA	NA	

2011 Census Age Cohort Breakout	Male	Female	Total	As a % of Argyle Neighbourhood
0 to 4	875	810	1,685	6.14%
5 to 9	775	785	1,560	5.68%
10 to 14	930	880	1,810	6.59%
15 to 19	1,175	1,015	2,190	7.98%
20 to 24	1,070	1,020	2,090	7.61%
25 to 29	935	925	1,860	6.78%
30 to 34	840	865	1,705	6.21%
35 to 39	855	885	1,740	6.34%
40 to 44	950	1,030	1,980	7.21%
45 to 49	1,200	1,240	2,440	8.89%
50 to 54	1,030	1,150	2,180	7.94%
55 to 59	835	860	1,695	6.17%
60 to 64	665	720	1,385	5.05%
65 to 69	460	560	1,020	3.72%
70 to 74	370	420	790	2.88%
75 to 79	280	365	645	2.35%
80 to 84	165	230	395	1.44%
85+	100	180	280	1.02%
Total	13,500	13,935	27,450	



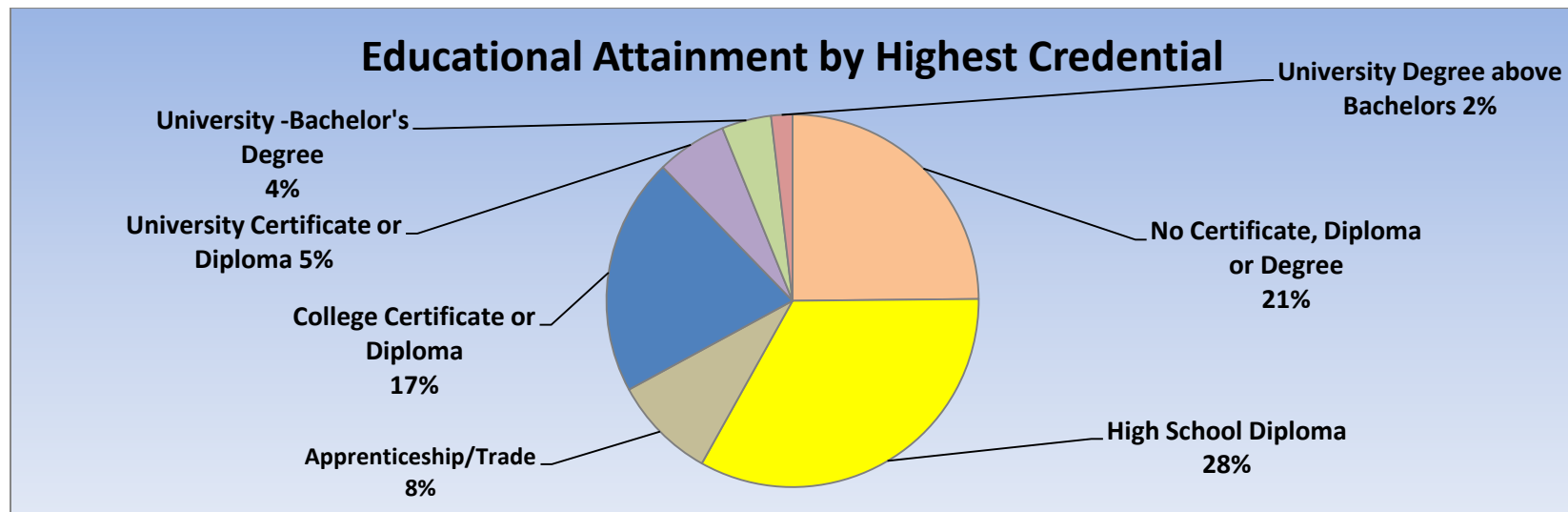
Marital Status	1996	2001	2006	2011	Change From Previous Period	As a % of Neighbourhood
Single	5,725	6,440	7,535	6,860	↓ (-9%)	25%
Married	10,850	10,630	10,120	9,385	↓ (-7%)	34%
Common-Law	1,400	1,970	2,240	2,425	↑ 8%	9%
Divorced	1,615	1,860	2,040	1,645	↓ (-19%)	6%
Separated	935	1,075	1,235	930	↓ (-25%)	3%
Widowed	100	1,070	1,105	1,145	↑ 4%	4%
Citizenship, Immigration & Ethnic Identity	1996	2001	2006	2011	Change From Previous Period	As a % of Neighbourhood
Citizenship						
Canadian Citizens	25,535	26,760	26,695	26,550	↓ (<-1%)	97%
Non-Canadian Citizens	1,120	960	1,130	785	↓ (-31%)	3%
Immigration Status						
Canadian Born Population	21,680	22,815	22,635	22,695	↑ <1%	83%
Foreign Born Population	4,925	4,830	5,060	4,570	↓ (-10%)	17%
Visible Minority Population	1,615	2,195	2,845	2,640	↓ (-7%)	10%
Aboriginal Identity Population	370	530	480	1,095	↑ 128%	4%

Family Composition	1996	2001	2006	2011	Change From Previous Period	As a % of Neighbourhood
Number of Census Families	7,515	7,985	8,045	7,765	↓ (-3%)	
Family Size - 2 Persons	3,150	3,530	3,665	3,705	↑ 1%	48%
Family Size - 3 Persons	1,735	1,830	2,015	1,925	↓ (-4%)	25%
Family Size - 4 Persons	1,840	1,785	1,635	1,515	↓ (-7%)	20%
Family Size - ≥ 5 Persons	785	835	730	615	↓ (-16)	8%
Census Family - Average Size	3.00	3.00	3.00	2.90	↓	















Family Structure & Number of Children	1996	2001	2006	2011	Change From Previous Period	
Married Couples	5,410	5,285	5,030	4,620	↓	(-8%)
Without Children	2,085	1,980	2,045	2,015	↓	(-1%)
With Children	3,325	3,305	2,985	2,605	↓	(-13%)
Common-Law	700	985	1,120	1,210	↑	8%
Without Children	295	475	575	590	↑	3%
With Children	400	505	545	620	↑	14%
Lone Parent Families	1,405	1,715	1,890	1,945	↑	3%
Female Headed	1,230	1,470	1,665	1,590	↓	(-5%)
1 Child	665	895	875	845	↓	(-3%)
2 Children	415	440	610	530	↓	(-13%)
≥ 3 Children	145	130	180	205	↑	14%
Male Headed	175	245	225	355	↑	58%
1 Child	100	180	170	260	↑	53%
2 Children	55	50	55	70	↑	27%
≥ 3 Children	15	20	0	30	↑	100%

Educational Attainment by Credential	1996	2001	2006	2011	Change From Previous Period	As a % of Neighbourhood
No Certificate, Diploma or Degree	N.A.	4,570	6,345	5,780	↓ (-9%)	21%
High School Diploma or Equivalent	N.A.	N.A.	6,915	7,735	↑ 12%	28%
Apprenticeship, or Trade Certificate	740	2,495	2,385	2,090	↓ (-12%)	8%
College Certificate or Diploma	N.A.	3,585	4,680	4,800	↑ 3%	17%
University Certificate or Degree	N.A.	N.A.	N.A.	1,425	N.A. N.A.	5%
University -Bachelor's Degree	N.A.	N.A.	860	1,000	↑ 16%	4%
University Degree above bachelor level (M.A. or PhD)	N.A.	N.A.	325	430	↑ 32%	2%

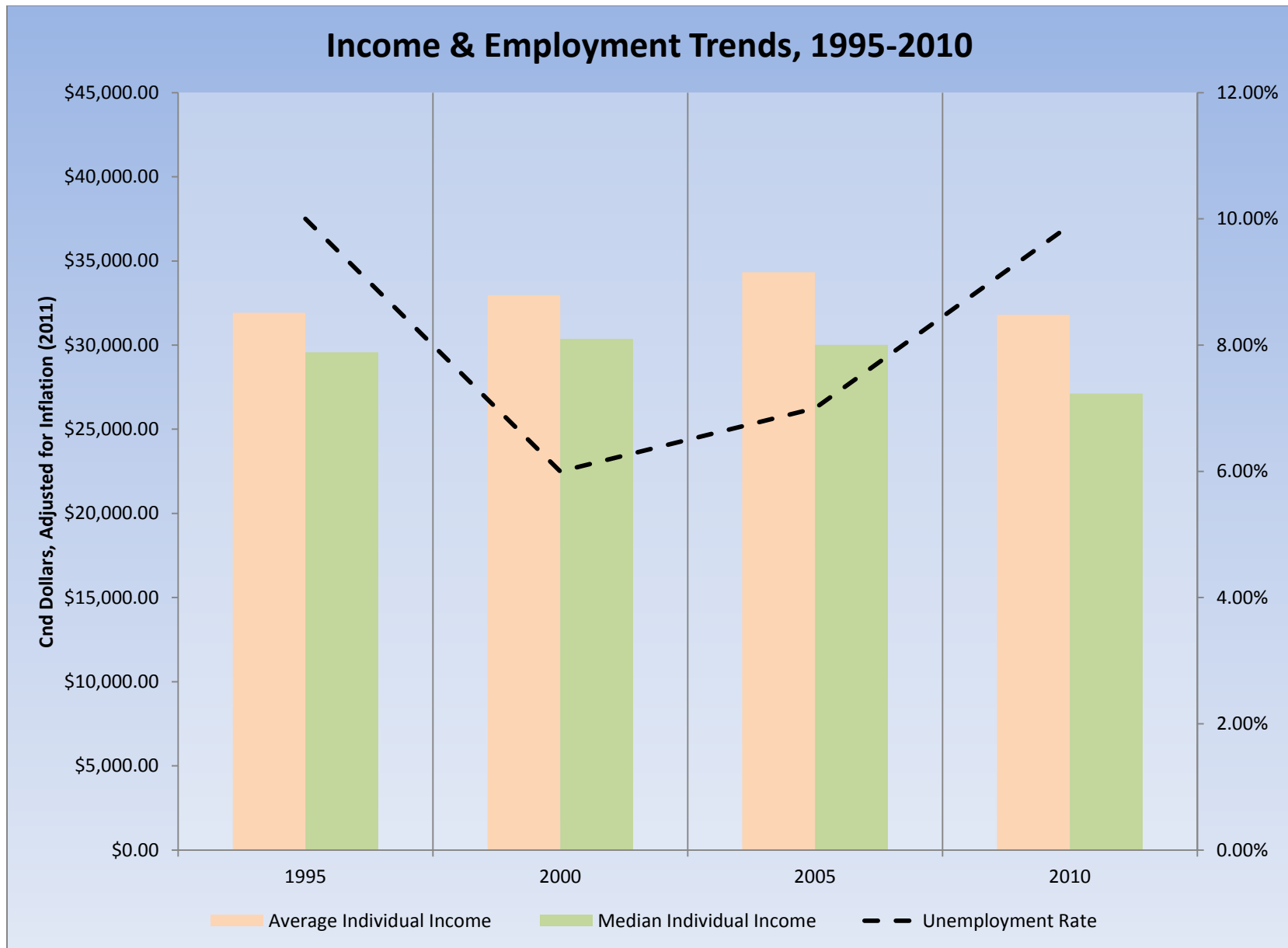


Housing by Structure Type & Tenure	1996	2001	2006	2011	Change From Previous Period	As a % of Neighbourhood
Total Occupied Dwellings	9,675	10,320	10,705	10,835	↑ 1%	
Single-Detached	5,185	5,805	5,785	5,855	↑ 1%	54%
Semi-Detached	630	760	865	815	↓ (-6%)	8%
Row House	2,275	2,060	2,130	2,230	↑ 5%	21%
Duplex	230	190	320	290	↓ (-9%)	3%
Apartment < 5 Storeys	1,165	1,250	1,355	1,375	↑ 1%	13%
Apartment ≥ 5 Storeys	175	255	240	270	↑ 13%	2%
Number of Owned Dwellings	6,540	7,260	7,795	7,555	↓ (-3%)	
Owned as a % of Total	68%	70%	73%	70%	↓	70%
Number of Rented Dwellings	3,135	3,070	2,910	3,280	↑ 13%	
Rented as a % of Total	32%	30%	27%	30%	↑	30%
Average # of Rooms	7	7	7	6.7	↓	
Average # of Bedrooms	3	3	3	N.A.	N.A.	
Average Gross Rent	\$645.00	\$636.00	\$692.00	\$818.00	↑ 18%	
Average Value of Dwelling	\$122,998.00	\$120,742.00	\$156,453.00	\$193,832.00	↑ 24%	

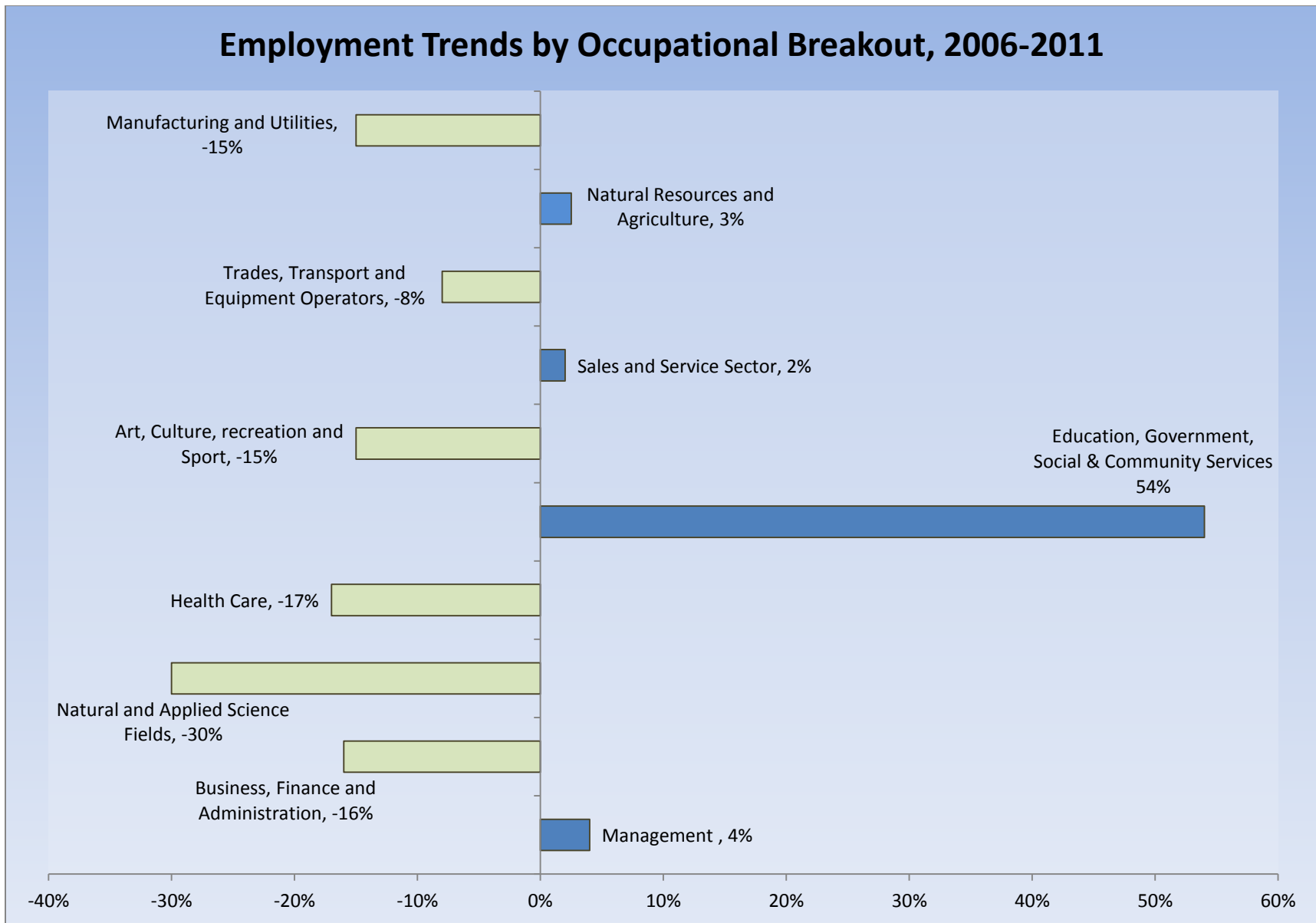
Labour Market Indicators	1996	2001	2006	2011	Change From Previous Period	As a % of Work Force
Total Labour Force ≥ 15 years	13,740	14,705	15,245	14,660	 (-4%)	
Female	6,475	7,110	7,400	6,915	 (-7%)	47%
Male	7,265	7,595	7,845	7,745	 (-1%)	53%
Unemployment Rate	10.00%	6.00%	7.00%	9.90%		
Female	12.00%	6.00%	6.00%	8.70%		
Male	9.00%	6.00%	7.00%	11.00%		
Employment Rate	N.A.	N.A.	N.A.	59.30%		
Participation Rate	68.00%	70.00%	69.00%	65.80%		
Female	62.00%	65.00%	65.00%	55.40%		
Male	75.00%	75.00%	74.00%	71.10%		
Labour Force by Sector						
Primary (Agriculture & Resources)	145	130	160	205	 28%	1%%
Secondary (Construction & Manufacturing)	3,895	3,995	4,690	4,260	 (-9%)	30%
Tertiary Services	9,590	10,305	10,715	9,590	 (-10%)	68%

Income Characteristics of Economically Active Population	1996	2001	2006	2011	Change From Previous Period	
Individual Income						
Average Income	\$23,464.50	\$26,168.50	\$30,684.00	\$31,069.00	↑	1%
Median Income	\$21,739.00	\$24,102.50	\$26,835.00	\$26,503.00	↓	(-1%)
Income by Gender						
Average Income – Male	\$28,550.00	\$31,692.00	\$36,164.00	\$35,346.00	↓	(-2%)
Average Income - Female	\$18,379.00	\$20,645.00	\$25,504.00	\$27,050.00	↑	6%
Median Income – Male	\$27,715.00	\$30,294.00	\$33,231.00	\$33,166.00	↓	(<-1%)
Median Income - Female	\$15,763.00	\$17,911.00	\$22,160.00	\$22,389.00	↑	1%
Household Income						
Average Household Income	\$45,613.00	\$50,494.00	\$59,734.00	\$60,313.00	↑	1%
Median Household Income	\$42,506.00	\$46,913.00	\$53,530.00	\$51,453.00	↓	(-4%)
Family Income						
Average Family Income	\$48,754.00	\$54,939.00	\$67,071.00	\$68,798.00	↑	3%
Median Family Income	\$47,531.00	\$52,430.00	\$62,272.00	\$62,863.00	↑	1%
Lone-Parent Families						
Average Family Income	N.A.	N.A.	N.A.	\$54,116.00		
Median Family Income	N.A.	N.A.	N.A.	\$43,902.00		

Data Note: Income figures based on previous reporting year (1995, 2000, 2005 & 2010).

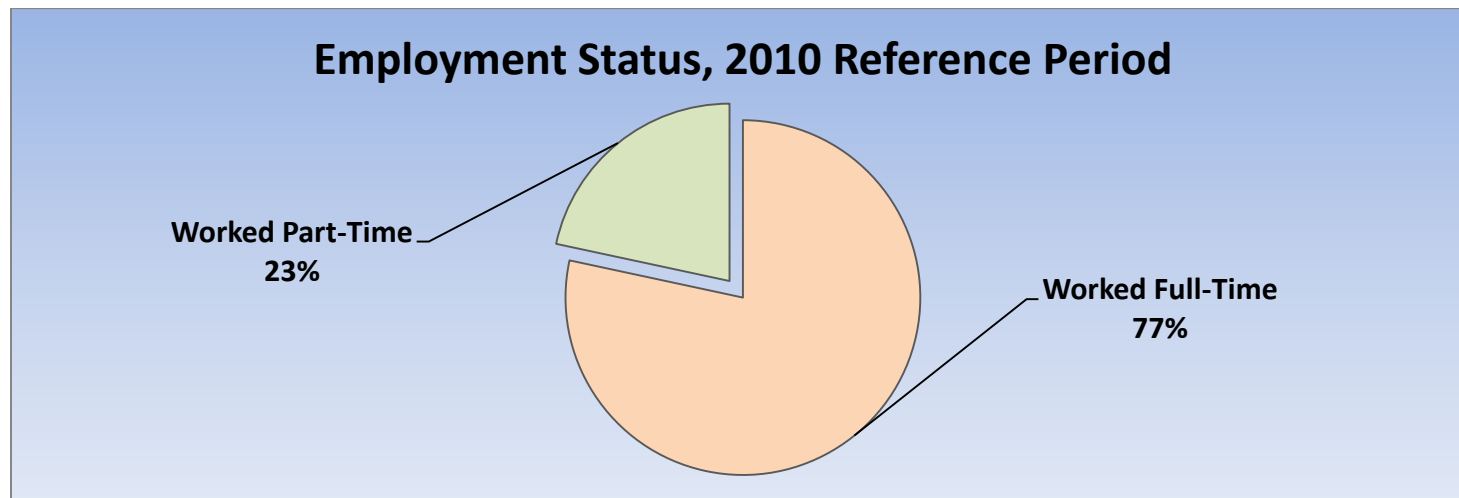


Labour Force by National Occupational Classification	1996	2001	2006	2011	Change From Previous Period	As a % of Argyle Work Force
Management	730	945	860	895	↑ 4%	6%
Business, Finance and Administration	2,410	2,645	2,805	2,370	↓ (-16%)	17%
Natural and Applied Science Fields	455	665	750	525	↓ (-30%)	4%
Health Care	580	775	735	610	↓ (-17%)	4%
Education, Government, Social & Community Services	485	555	695	1,070	↑ 54%	8%
Art, Culture, recreation and Sport	255	220	230	195	↓ (-15%)	1%
Sales and Service Sector	3,770	3,750	3,855	3,925	↑ 2%	28%
Trades, Transport and Equipment Operators	2,435	3,055	3,005	2,755	↓ (-8%)	20%
Natural Resources and Agriculture	135	145	200	205	↑ 2.5%	1%
Manufacturing and Utilities	2,040	1,685	1,765	1,505	↓ (-15%)	11%



Class of Worker	1996	2001	2006	2011	Change From Previous Period	As a % of Work Force
Employee	12,570	13,425	14,120	13,325	↓ 6%	95%
Female	5,880	6,540	6,940	6,275		
Male	6,690	6,885	7,180	7,050		
Self-Employed	960	980	610	735	↑ 20%	5%
Female	345	405	120	355		
Male	615	575	490	375		

Employment Status	1996	2001	2006	2011	Change From Previous Period	As a % of Work Force
Worked Full-Time in 2010	N.A.	N.A.	N.A.	10,570	N.A.	77%
Worked Part-Time in 2010	N.A.	N.A.	N.A.	3,145	N.A.	23%



Mode of Transport to Work	1996	2001	2006	2011	Change From Previous Period	As a % of Work Force
Automobile -As a Driver	9,290	10,440	10,345	10,000	↓ (-3%)	36%
Car-Pool	1,225	1,055	1,300	1,000	↓ (-23%)	4%
Public Transportation	665	815	995	980	↓ (-2%)	4%
Walked or Bicycled	525	660	935	625	↓ (-33%)	2%
Other Modes	70	175	125	100	↓ (-20%)	<1%
Median Commuting Duration	N.A.	N.A.	N.A.	15.8		

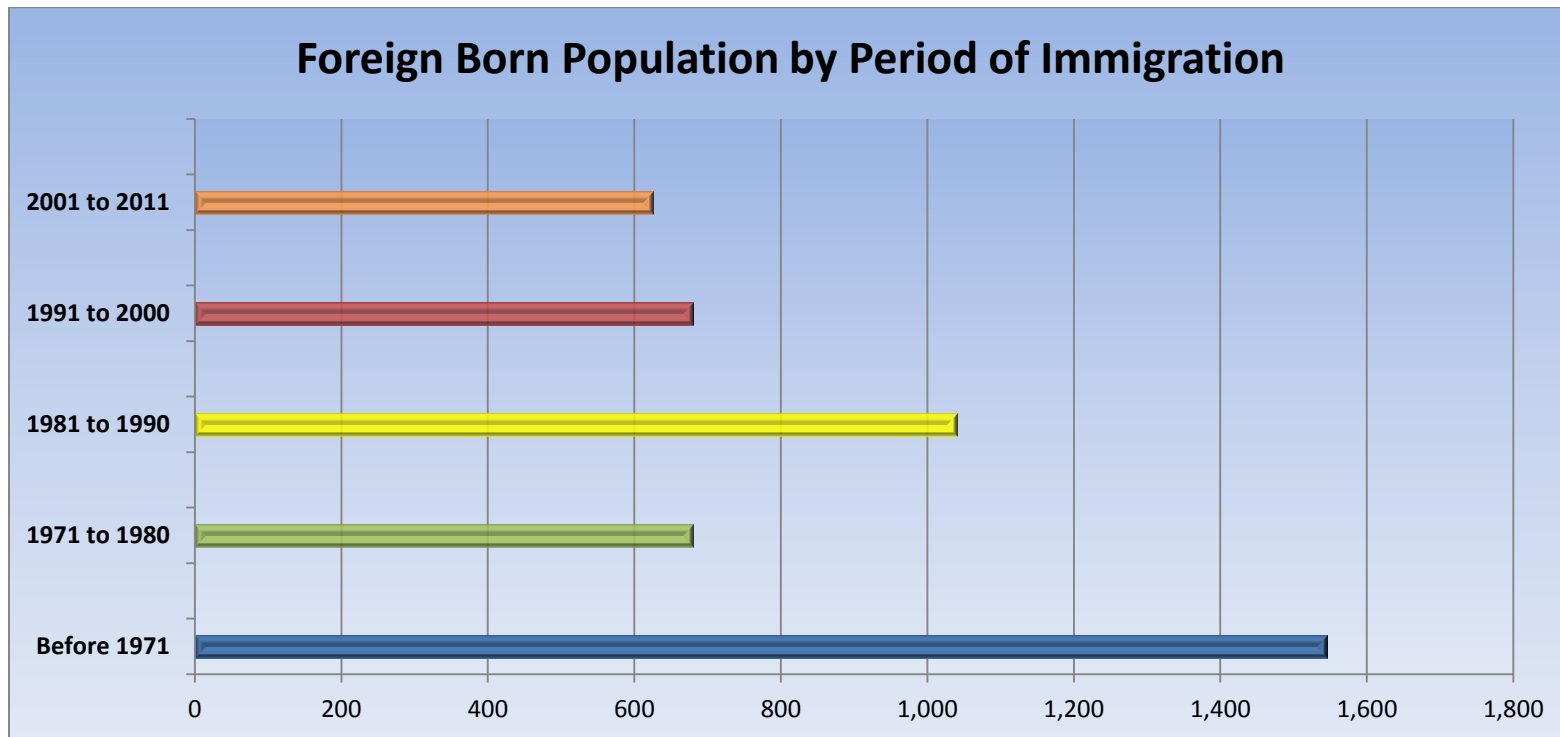
Place of Work	1996	2001	2006	2011	Change From Previous Period	As a % of Work Force
Worked at Home	1,105	590	455	480	↑ 5%	2%
Worked at a Fixed Address	10,785	12,030	12,375	11,305	↓ (-9%)	41%
No Fixed Workplace Address	975	1,120	1,370	1,395	↑ 2%	5%
Worked within Municipality	10,130	10,820	10,785	N.A.		
Work in a different Municipality	940	1,200	1,590	N.A.		
Worked outside Canada	30	40	35	35	— —	<1%

Mobility/Migration Status	1996	2001	2006	2011	Change From Previous Period	As a % of Neighbourhood
Lived at the same address 5 years ago	11,640	14,250	15,255	16,210	↑	63%
Moved sometime with the last 5 years	12,625	11,455	10,930	9,475	↓ (-13%)	37%
Internal Migrants	2,505	2,750	2,835	2,160	↓ (-24%)	79%
- Intra-provincial	2,260	2,365	2,610	1,955	↓	
- Inter-provincial	245	385	225	205	↓	
External Migrants	500	250	350	215	↓ (-39%)	1%
Lived at the same address 1 years ago	21,565	22,810	23,915	23,970	↑ <1%	89%
Moved sometime with the last year	4,560	4,570	3,630	3,060	↓ (-16%)	11%
Internal Migrants	745	915	880	765	↓ (-13%)	3%
- Intra-provincial	590	755	860	660	↓ (-23%)	
- Inter-provincial	160	155	20	105	↑ 425%	
External Migrants	35	40	75	35	↓ (-53%)	<1%

Place of Birth	1996	2001	2006	2011	Change From Previous Period		As a % of Neighbourhood
Total Immigrant Population	N.A.	N.A.	5,060	4,575	↓	(-10%)	17%
Place of Birth by Continent							
North America (US only)	N.A.	N.A.	230	295	↑	28%	1%
Africa	N.A.	N.A.	260	335	↑	29%	1%
Asia	N.A.	N.A.	590	695	↑	18%	2%
Caribbean	N.A.	N.A.	155	135	↓	(-13%)	<1%
Central and South America	N.A.	N.A.	575	335	↓	(-42%)	1%
Europe	N.A.	N.A.	3,045	2,700	↓	(-11%)	10%
Recent Immigration by Continent, 2006-2011							
Recent Immigrants	N.A.	N.A.	320	340	↑	6%	1%
North America (US only)	N.A.	N.A.	15	35	↑	133%	<1%
Africa	N.A.	N.A.	85	30	↓	(-65%)	<1%
Asia	N.A.	N.A.	65	200	↑	208%	1%
Caribbean	N.A.	N.A.	15	0	↓	(-100%)	0%
Central and South America	N.A.	N.A.	80	15	↓	(-81%)	<1%
Europe	N.A.	N.A.	20	30	↑	50%	<1%

Immigration by Place of Birth	1996	2001	2006	2011	Change From Previous Period	As a % of Neighbourhood
1. Portugal	N.A.	N.A.	580	685	↑ 18%	2%
2. United Kingdom	N.A.	N.A.	765	605	↓ (-21%)	2%
3. Poland	N.A.	N.A.	505	450	↓ (-11%)	2%
4. United States of America	N.A.	N.A.	230	295	↑ 28%	1%
5. Netherlands	N.A.	N.A.	N.A.	245		1%
6. Italy	N.A.	N.A.	N.A.	230		1%
7. El Salvador	N.A.	N.A.	265	160	↓ (-40%)	1%
8. Germany	N.A.	N.A.	N.A.	115		<1%
9. Viet Nam	N.A.	N.A.	N.A.	115		<1%
10. China & India	N.A.	N.A.	N.A.	80		<1%

Period of Immigration	1996	2001	2006	2011	Change From Previous Period	As a % of Neighbourhood
Before 1971	N.A.	N.A.	1,855	1,545	↓ (-17%)	6%
1971 to 1980	N.A.	N.A.	670	680	↑ 1%	2%
1981 to 1990	N.A.	N.A.	1,000	1,040	↑ 4%	4%
1991 to 2000	N.A.	N.A.	1,225	680	↓ (-44%)	2%
2001 to 2011	N.A.	N.A.	N.A.	625	↑ 95%	2%



Language	1996	2001	2006	2011	Change From Previous Period	As a % of Neighbourhood
Knowledge of Official Languages						
English Only	25,075	26,015	25,940	25,790	↓ (<-1%)	94%
French Only	25	0	60	15	↓ (-75%)	<1%
English and French	1,200	1,380	1,495	1,320	↓ (-12%)	5%
Neither English or French	355	320	335	255	↓ (-24%)	1%
Language Spoken Most Often at Home						
English	23,970	24,030	25,035	24,960	↓ (<-1%)	91%
French	65	10	170	135	↓ (-21%)	<1%
Non-Official Language	2,215	1,160	2,330	1,585	↓ (-32%)	6%
Mother Tongue *						
English	21,970	22,855	22,330	23,010	↑ 3%	84%
French	65	305	560	410	↓ (-27%)	1%
Non-Official Language	2,215	4,265	4,595	3,590	↓ (-22%)	13%

* Statistics Canada defines 'mother tongue' as the first language learned in childhood and still understood by the individual at the time of census reporting.

Non-Official Languages Spoken Top 10 Reported	1996	2001	2006	2011	Change From Previous Period	As a % of Neighbourhood
Portuguese	N.A.	1,000	995	990	↓ (<-1%)	4%
Polish	N.A.	N.A.	710	650	↓ (-8%)	2%
Spanish	N.A.	545	1,040	520	↓ (-50%)	2%
Dutch	N.A.	N.A.	260	295	↑ 13%	1%
Italian	N.A.	N.A.	355	290	↓ (-18%)	1%
German	N.A.	N.A.	295	220	↓ (-25%)	1%
Arabic	N.A.	N.A.	180	200	↑ 11%	1%
Greek	N.A.	N.A.	150	130	↓ (-13%)	<1%
Hindi	N.A.	N.A.	145	130	↓ (-10%)	<1%
Chinese*	N.A.	N.A.	N.A.	130	— —	<1%

* Refers to Cantonese and Mandarin language speakers as well as others who do not specify otherwise.

Religious Identification	1996	2001	2006	2011	Change From Previous Period	As a % of Neighbourhood
Buddhist	N.A.	N.A.	N.A.	105		<1%
Christian	N.A.	N.A.	N.A.	16,685		61%
Anglican	N.A.	N.A.	N.A.	1,940		7%
Baptist	N.A.	N.A.	N.A.	750		3%
Catholic	N.A.	N.A.	N.A.	7,355		27%
Orthodox	N.A.	N.A.	N.A.	310		1%
Lutheran	N.A.	N.A.	N.A.	280		1%
Pentecostal	N.A.	N.A.	N.A.	585		2%
Presbyterian	N.A.	N.A.	N.A.	610		2%
United Church	N.A.	N.A.	N.A.	1,990		7%
Other Christian	N.A.	N.A.	N.A.	2,865		10%
Hindu	N.A.	N.A.	N.A.	150		<1%
Jewish	N.A.	N.A.	N.A.	0		0%
Muslim	N.A.	N.A.	N.A.	370		1%
Sikh	N.A.	N.A.	N.A.	25		<1%
Aboriginal Spirituality	N.A.	N.A.	N.A.	15		<1%

Notes:

- (1) Source Data –Statistics Canada. 1996-2011 Census Data, Customized Profiles. Ottawa, Canada
- (2) Data also derived from Statistics Canada’s National Household Survey (NHS)
- (3) Customized Community and Neighbourhood Profiles tabulated and compiled by the City of London’s Planning Division –Policy Planning and Research Section.