



## Westmount Neighbourhood Profile

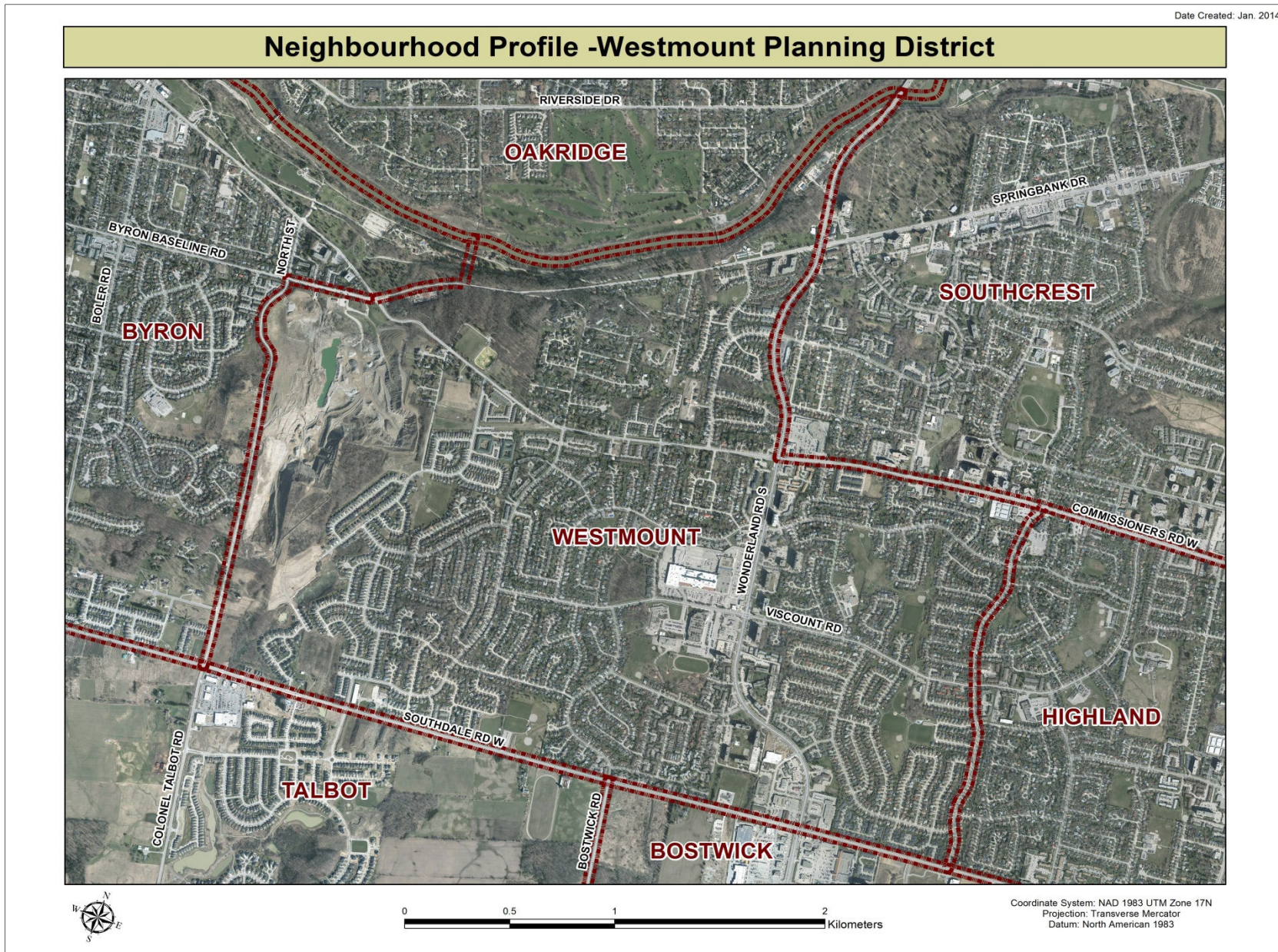
For further information contact:

John-Paul Sousa

Planning Research Analyst

Direct: (519) 661-2500 ext. 5989 | email: [jpsousa@london.ca](mailto:jpsousa@london.ca)

Date Created: Jan. 2014

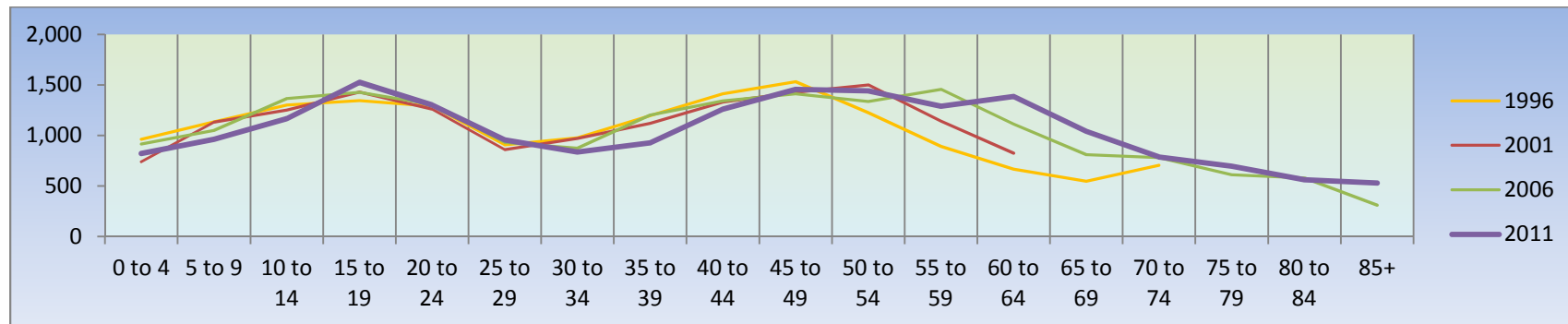


## Population Characteristics & Age Distribution

| Westmount Neighbourhood | 1996          | 2001          | 2006          | 2011          | Change From Previous Period |     |
|-------------------------|---------------|---------------|---------------|---------------|-----------------------------|-----|
| <b>Total Population</b> | <b>16,890</b> | <b>17,535</b> | <b>18,795</b> | <b>18,930</b> | ↑                           | <1% |
| Female                  | 8,760         | 9,145         | 9,880         | 9,990         | ↑                           | <1% |
| Male                    | 8,130         | 8,390         | 8,920         | 8,940         | ↑                           | <1% |

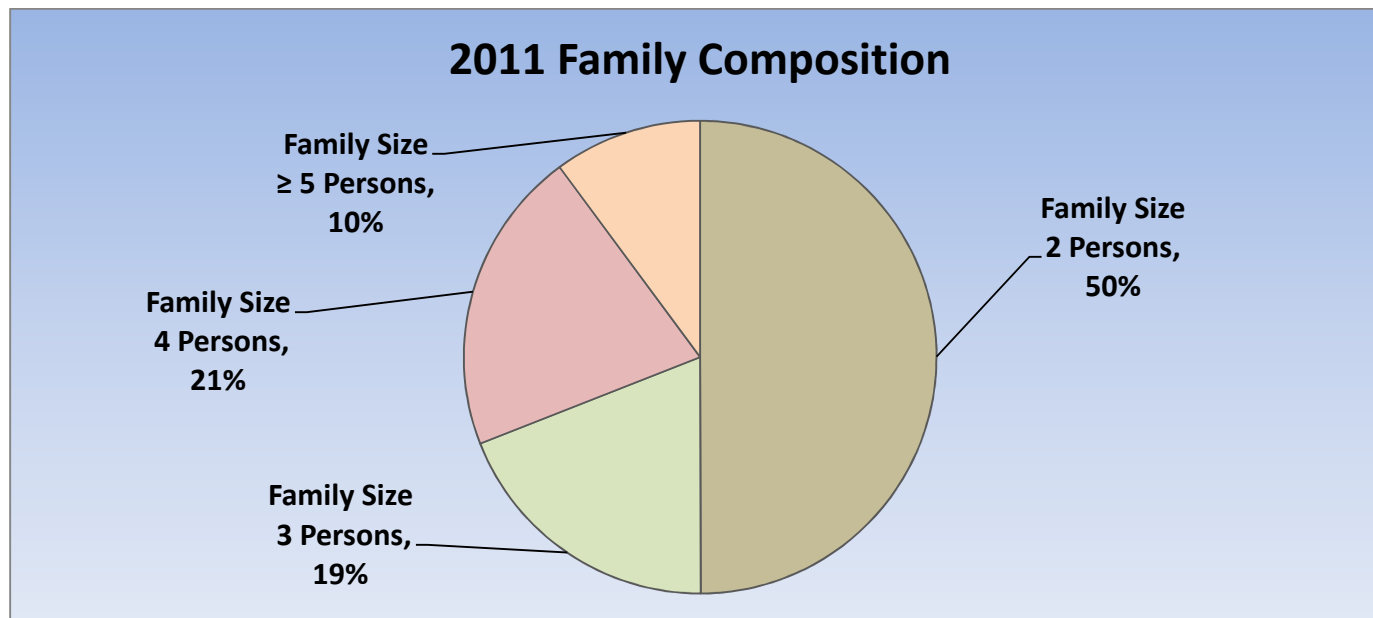
| Age Structure     | 1996         | 2001         | 2006         | 2011         | Change From Previous Period |        | As a % of Neighbourhood |
|-------------------|--------------|--------------|--------------|--------------|-----------------------------|--------|-------------------------|
| <b>0-19</b>       | <b>4,740</b> | <b>4,550</b> | <b>4,755</b> | <b>4,465</b> | ↓                           | (-6%)  | <b>24%</b>              |
| 0 to 4            | 960          | 740          | 915          | 820          | ↓                           | (-10%) | 4%                      |
| 5 to 9            | 1,135        | 1,130        | 1,050        | 960          | ↓                           | (-9%)  | 5%                      |
| 10 to 14          | 1,135        | 1,250        | 1,365        | 1,160        | ↓                           | (-15%) | 6%                      |
| 15 to 19          | 1,345        | 1,430        | 1,525        | 1,525        | —                           | —      | 8%                      |
| <b>20-44</b>      | <b>5,775</b> | <b>5,540</b> | <b>5,650</b> | <b>5,285</b> | ↓                           | (-6%)  | <b>28%</b>              |
| <b>45-64</b>      | <b>4,310</b> | <b>4,890</b> | <b>5,310</b> | <b>5,555</b> | ↑                           | 5%     | <b>29%</b>              |
| <b>65+</b>        | <b>2,090</b> | <b>2,555</b> | <b>3,090</b> | <b>3,625</b> | ↑                           | 17%    | <b>19%</b>              |
| <b>Median Age</b> | <b>N.A.</b>  | <b>N.A.</b>  | <b>N.A.</b>  | <b>43.9</b>  |                             |        |                         |

| 2011 Census Age Cohort Breakout | Male         | Female       | Total         | As a % of Neighbourhood |
|---------------------------------|--------------|--------------|---------------|-------------------------|
| 0 to 4                          | 440          | 380          | 820           | 4.33%                   |
| 5 to 9                          | 485          | 475          | 960           | 5.07%                   |
| 10 to 14                        | 575          | 590          | 1,165         | 6.16%                   |
| 15 to 19                        | 790          | 735          | 1,525         | 8.06%                   |
| 20 to 24                        | 655          | 645          | 1,300         | 6.87%                   |
| 25 to 29                        | 435          | 520          | 955           | 5.05%                   |
| 30 to 34                        | 385          | 450          | 835           | 4.41%                   |
| 35 to 39                        | 425          | 500          | 925           | 4.89%                   |
| 40 to 44                        | 580          | 680          | 1,260         | 6.66%                   |
| 45 to 49                        | 685          | 770          | 1,455         | 7.69%                   |
| 50 to 54                        | 675          | 765          | 1,440         | 7.61%                   |
| 55 to 59                        | 590          | 700          | 1,290         | 6.82%                   |
| 60 to 64                        | 640          | 745          | 1,385         | 7.32%                   |
| 65 to 69                        | 490          | 550          | 1,040         | 5.50%                   |
| 70 to 74                        | 375          | 410          | 785           | 4.15%                   |
| 75 to 79                        | 300          | 395          | 695           | 3.67%                   |
| 80 to 84                        | 235          | 325          | 560           | 2.96%                   |
| 85+                             | 170          | 360          | 530           | 2.80%                   |
| <b>Total</b>                    | <b>8,930</b> | <b>9,995</b> | <b>18,925</b> |                         |



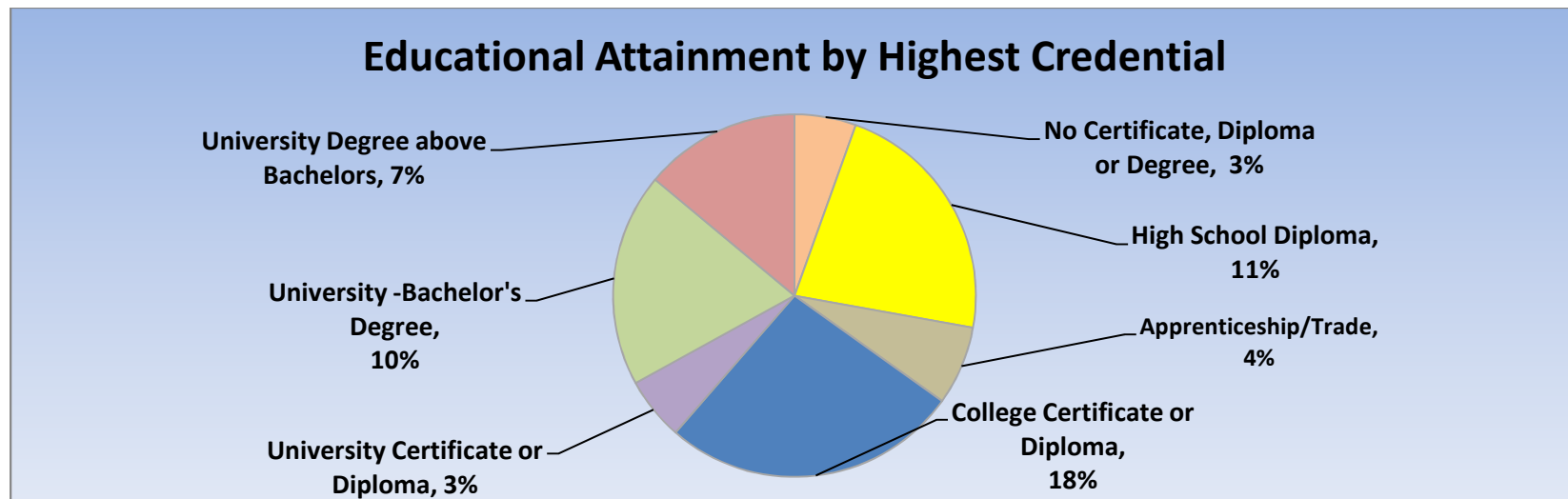
| <b>Marital Status</b>                                 | <b>1996</b> | <b>2001</b> | <b>2006</b> | <b>2011</b> | <b>Change From Previous Period</b> | <b>As a % of Neighbourhood</b> |
|---|-------------|-------------|-------------|-------------|------------------------------------|--------------------------------|
| Single  | 3,785       | 4,065       | 4,400       | 4,195       | ↓ (-5%)                            | 22%                            |
| Married   | 7,695       | 8,260       | 8,790       | 8,585       | ↓ (-2%)                            | 45%                            |
| Common-Law  | 660         | 660         | 740         | 950         | ↑ 28%                              | 5%                             |
| Divorced  | 775         | 830         | 895         | 785         | ↓ (-12%)                           | 4%                             |
| Separated   | 470         | 400         | 395         | 425         | ↑ 7%                               | 2%                             |
| Widowed   | 790         | 850         | 990         | 1,040       | ↑ 5%                               | 5%                             |
| <b>Citizenship, Immigration &amp; Ethnic Identity</b> | <b>1996</b> | <b>2001</b> | <b>2006</b> | <b>2011</b> | <b>Change From Previous Period</b> | <b>As a % of Neighbourhood</b> |
| <b>Citizenship</b>                                    |             |             |             |             |                                    |                                |
| Canadian Citizens                                     | 15,505      | 16,035      | 17,255      | 17,295      | ↑ <1%                              | 91%                            |
| Non-Canadian Citizens                                 | 1,395       | 1,500       | 1,540       | 1,345       | ↓ (-13%)                           | 7%                             |
| <b>Immigration Status</b>                             |             |             |             |             |                                    |                                |
| Canadian Born Population                              | 12,425      | 12,825      | 13,465      | 13,465      | — —                                | 71%                            |
| Foreign Born Population                               | 4,355       | 4,365       | 4,935       | 4,960       | ↑ <1%                              | 26%                            |
| Visible Minority Population                           | 2,445       | 2,675       | 3,710       | 3,560       | ↓ (-4%)                            | 19%                            |
| Aboriginal Identity Population                        | 80          | 100         | 170         | 185         | ↑ 9%                               | 1%                             |

| Family Composition                  | 1996         | 2001         | 2006         | 2011         | Change From Previous Period | As a % of Neighbourhood |
|-------------------------------------|--------------|--------------|--------------|--------------|-----------------------------|-------------------------|
| <b>Number of Census Families</b>    | <b>4,775</b> | <b>5,085</b> | <b>5,365</b> | <b>5,480</b> | ↑ 2%                        |                         |
| Family Size - 2 Persons             | 2,085        | 2,335        | 2,485        | 2,735        | ↑ 10%                       | 50%                     |
| Family Size - 3 Persons             | 965          | 980          | 1,035        | 1,045        | ↑ 1%                        | 19%                     |
| Family Size - 4 Persons             | 1,100        | 1,225        | 1,240        | 1,045        | ↓ (-16%)                    | 21%                     |
| Family Size - ≥ 5 Persons           | 625          | 545          | 610          | 555          | ↓ (-9%)                     | 10%                     |
| <b>Census Family - Average Size</b> | <b>3.00</b>  | <b>3.00</b>  | <b>3.00</b>  | <b>2.90</b>  | ↓                           |                         |



| Family Structure & Number of Children | 1996         | 2001         | 2006         | 2011         | Change From Previous Period |        |
|---------------------------------------|--------------|--------------|--------------|--------------|-----------------------------|--------|
| <b>Married Couples</b>                | <b>3,380</b> | <b>4,085</b> | <b>4,325</b> | <b>4,190</b> | ↑                           | 3%     |
| Without Children                      | 1,515        | 1,730        | 1,860        | 1,955        | ↑                           | 5%     |
| With Children                         | 2,315        | 2,355        | 2,465        | 2,235        | ↓                           | (-9%)  |
| <b>Common-Law</b>                     | <b>330</b>   | <b>325</b>   | <b>375</b>   | <b>475</b>   | ↑                           | 27%    |
| Without Children                      | 210          | 210          | 230          | 295          | ↑                           | 28%    |
| With Children                         | 115          | 115          | 140          | 180          | ↑                           | 29%    |
| <b>Lone Parent Families</b>           | <b>615</b>   | <b>670</b>   | <b>670</b>   | <b>810</b>   | ↑                           | 21%    |
| Female Headed                         | 525          | 565          | 560          | 675          | ↑                           | 21%    |
| 1 Child                               | 290          | 325          | 340          | 395          | ↑                           | 16%    |
| 2 Children                            | 175          | 180          | 160          | 200          | ↑                           | 25%    |
| ≥ 3 Children                          | 60           | 60           | 55           | 75           | ↑                           | 36%    |
| Male Headed                           | 90           | 105          | 110          | 140          | ↑                           | 23%    |
| 1 Child                               | 65           | 60           | 60           | 90           | ↑                           | 50%    |
| 2 Children                            | 20           | 30           | 30           | 30           | —                           | —      |
| ≥ 3 Children                          | 0            | 0            | 25           | 15           | ↓                           | (-40%) |

| Educational Attainment by Credential                 | 1996 | 2001  | 2006  | 2011  | Change From Previous Period |        | As a % of Neighbourhood |
|--|------|-------|-------|-------|-----------------------------|--------|-------------------------|
| No Certificate, Diploma or Degree                    | N.A. | N.A.  | N.A.  | 520   | —                           | —      | 3%                      |
| High School Diploma or Equivalent                    | N.A. | N.A.  | 4,290 | 2,115 | ↓                           | (-51%) | 11%                     |
| Apprenticeship, or Trade Certificate                 | 430  | 1,290 | 850   | 665   | ↓                           | (22%)  | 4%                      |
| College Certificate or Diploma                       | N.A. | 2,465 | 3,120 | 2,510 | ↓                           |        | 13%                     |
| University Certificate or Diploma                    | N.A. | N.A.  | N.A.  | 530   | —                           | —      | 3%                      |
| University -Bachelor's Degree                        | N.A. | N.A.  | 670   | 1,805 | ↑                           |        | 10%                     |
| University Degree above bachelor level (M.A. or PhD) | N.A. | N.A.  | 690   | 1,320 | ↑                           |        | 7%                      |



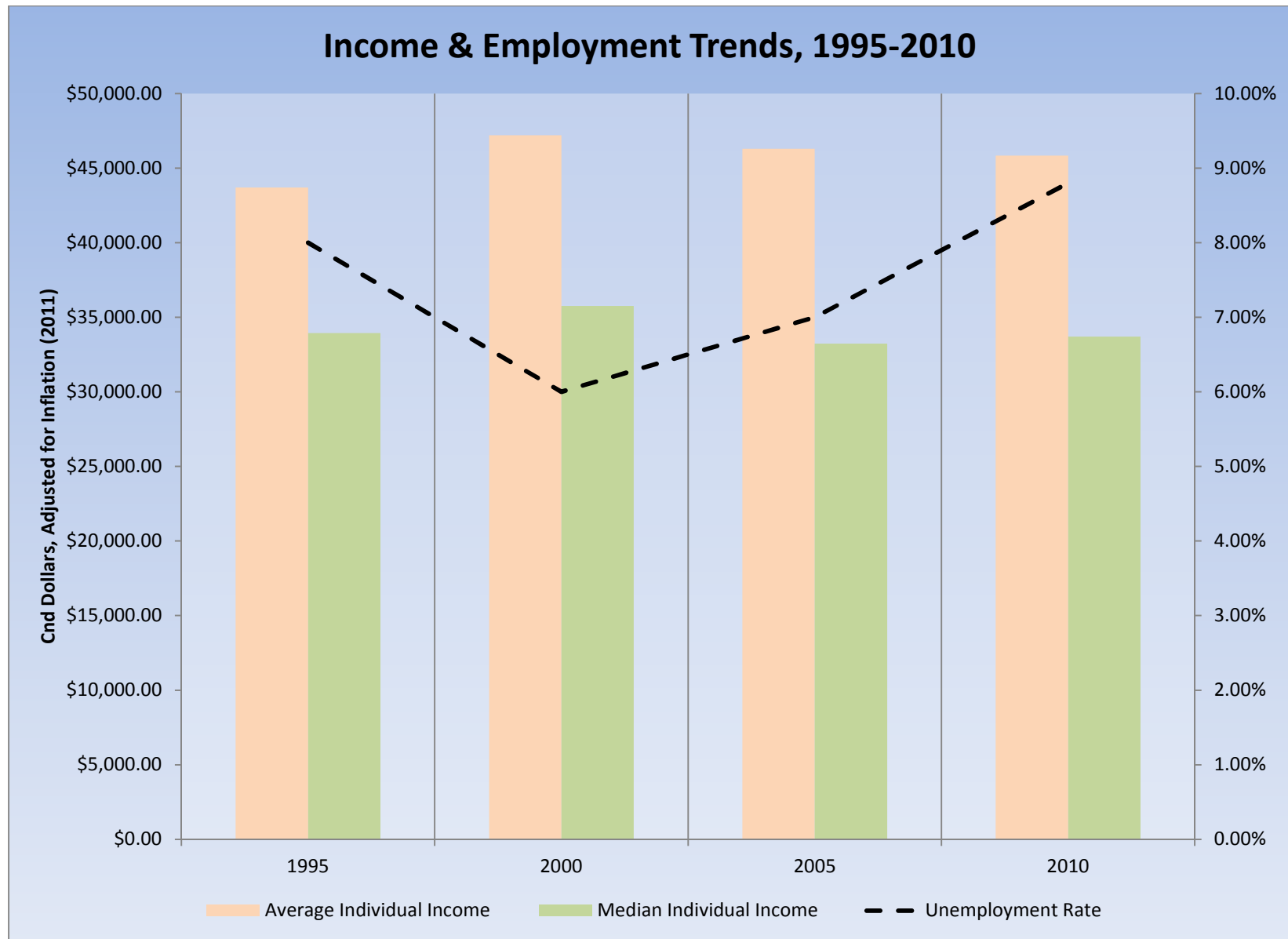


| Housing by Structure Type & Tenure | 1996         | 2001         | 2006         | 2011         | Change From Previous Period | As a % of Neighbourhood |
|------------------------------------|--------------|--------------|--------------|--------------|-----------------------------|-------------------------|
| <b>Total Occupied Dwellings</b>    | <b>6,240</b> | <b>6,695</b> | <b>7,130</b> | <b>7,360</b> | ↑ 3%                        |                         |
| Single-Detached                    | 3,060        | 3,115        | 3,535        | 3,755        | ↑ 6%                        | 51%                     |
| Semi-Detached                      | 0            | 115          | 0            | 5            | ↑ 100%                      | <1%                     |
| Row House                          | 995          | 1,050        | 1,255        | 1,265        | ↑ <1%                       | 17%                     |
| Duplex                             | 0            | 0            | 35           | 20           | ↓ (-43%)                    | <1%                     |
| Apartment < 5 Storeys              | 500          | 540          | 505          | 535          | ↑ 6%                        | 7%                      |
| Apartment ≥ 5 Storeys              | 1,685        | 1,825        | 1,800        | 1,780        | ↓ (-1%)                     | 24%                     |
| <b>Number of Owned Dwellings</b>   | <b>3,630</b> | <b>3,825</b> | <b>4,455</b> | <b>4,810</b> | ↑ 8%                        |                         |
| Owned as a % of Total              | 58%          | 57%          | 62%          | 65%          | ↑                           |                         |
| <b>Number of Rented Dwellings</b>  | <b>2,610</b> | <b>2,870</b> | <b>2,675</b> | <b>2,565</b> | ↓ (-4%)                     |                         |
| Rented as a % of Total             | 42%          | 43%          | 38%          | 35%          | ↓                           |                         |
| Average # of Rooms                 | 7            | 7            | 7            | 7.2          | ↑                           |                         |
| Average # of Bedrooms              | 3            | 3            | 3            | N.A.         | —                           |                         |
| Average Gross Rent                 | \$679.00     | \$731.00     | \$836.00     | \$904.00     | ↑ 8%                        |                         |
| Average Value of Dwelling          | \$203,759.00 | \$207,831.00 | \$293,020.00 | \$309,806.00 | ↑ 6%                        |                         |

| Labour Market Indicators                 | 1996         | 2001         | 2006         | 2011         | Change From Previous Period |        | As a % of Neighbourhood |
|--|--------------|--------------|--------------|--------------|-----------------------------|--------|-------------------------|
| <b>Total Labour Force ≥ 15 years</b>     | <b>8,830</b> | <b>9,010</b> | <b>9,355</b> | <b>9,775</b> | ↑                           | 4%     |                         |
| Female                                   | 4,230        | 4,435        | 4,580        | 4,945        | ↑                           | 8%     | 51%                     |
| Male                                     | 4,600        | 4,575        | 4,775        | 4,830        | ↑                           | 1%     | 49%                     |
| <b>Unemployment Rate</b>                 | <b>8%</b>    | <b>6%</b>    | <b>7%</b>    | <b>8.80%</b> | ↑                           |        |                         |
| Female                                   | 8%           | 5%           | 7%           | 8.40%        | ↑                           |        |                         |
| Male                                     | 8%           | 6%           | 6%           | 9.40%        | ↑                           |        |                         |
| Employment Rate                          | N.A.         | N.A.         | N.A.         | 56.60%       | –                           | –      |                         |
| Participation Rate                       | 65%          | 63%          | 61%          | 62.10%       | ↑                           |        |                         |
| Female                                   | 59%          | 58%          | 55%          | 58.70%       | ↑                           |        |                         |
| Male                                     | 72%          | 68%          | 67%          | 66.10%       | ↑                           |        |                         |
| <b>Labour Force by Sector</b>            |              |              |              |              |                             |        |                         |
| Primary (Agriculture & Resources)        | 105          | 80           | 110          | 85           | ↓                           | (-23%) | 1%                      |
| Secondary (Construction & Manufacturing) | 1,410        | 1,350        | 1,355        | 1,065        | ↓                           | (-21%) | 11%                     |
| Tertiary Services                        | 7,055        | 7,470        | 7,700        | 8,280        | ↑                           | 8%     | 88%                     |

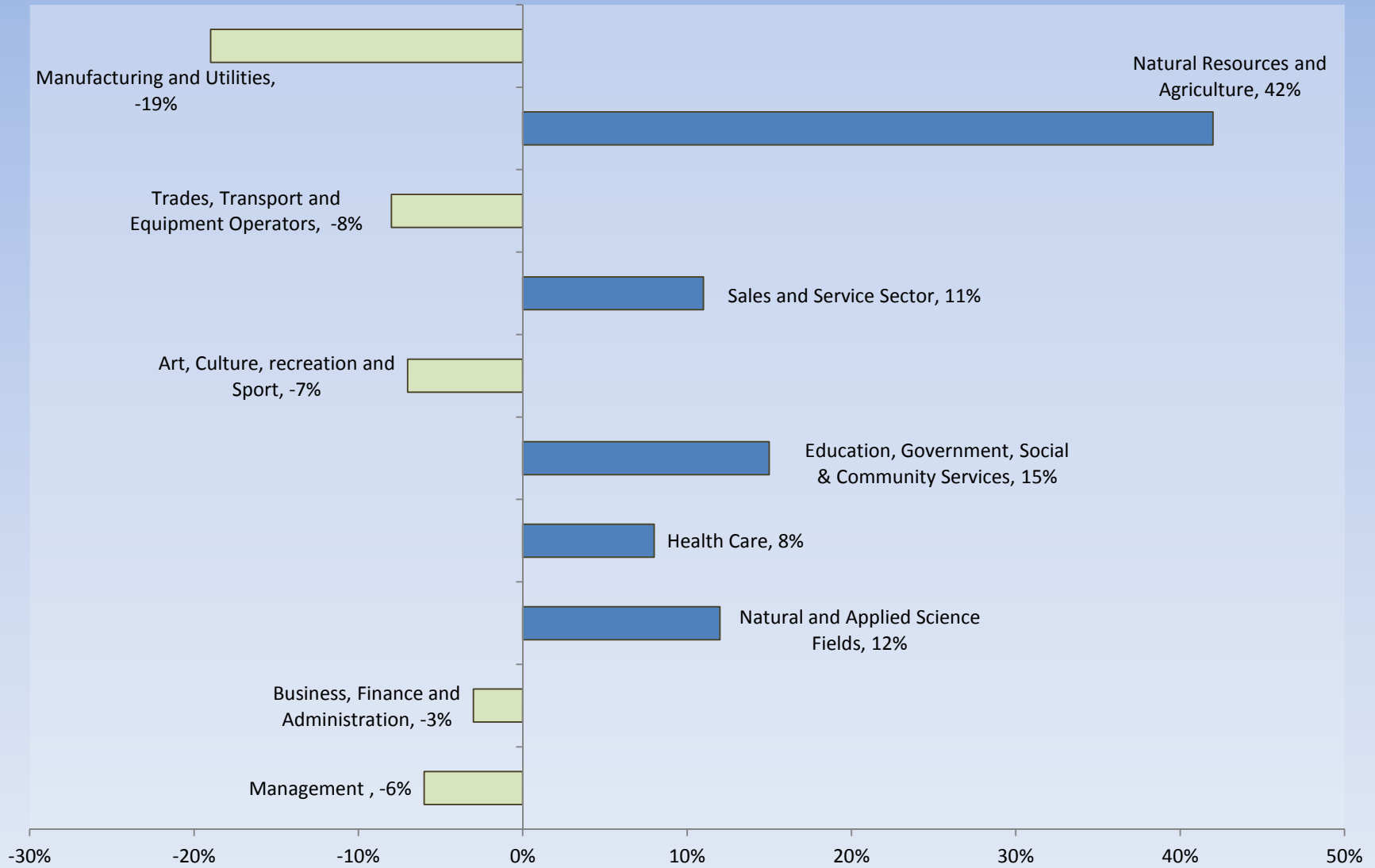
| Income Characteristics of Economically Active Population | 1996        | 2001        | 2006        | 2011         | Change From Previous Period |     |
|--|-------------|-------------|-------------|--------------|-----------------------------|-----|
| <b>Individual Income</b>                                 |             |             |             |              |                             |     |
| Average Income   | \$31,782.00 | \$37,145.50 | \$40,952.00 | \$44,208.00  | ↑                           | 8%  |
| Median Income  | \$24,679.00 | \$28,134.50 | \$29,402.00 | \$32,502.00  | ↑                           | 11% |
| <b>Income by Gender</b>                                  |             |             |             |              |                             |     |
| Average Income – Male                                    | \$39,587.00 | \$47,865.00 | \$51,676.00 | \$53,062.00  | ↑                           | 3%  |
| Average Income - Female                                  | \$23,977.00 | \$26,426.00 | \$31,569.00 | \$36,586.00  | ↑                           | 16% |
| Median Income – Male                                     | \$31,383.00 | \$36,012.00 | \$39,277.00 | \$40,025.00  | ↑                           | 2%  |
| Median Income - Female                                   | \$17,976.00 | \$20,257.00 | \$23,075.00 | \$27,838.00  | ↑                           | 21% |
| <b>Household Income</b>                                  |             |             |             |              |                             |     |
| Average Household Income                                 | \$63,724.00 | \$73,834.00 | \$84,064.00 | \$89,283.00  | ↑                           | 6%  |
| Median Household Income                                  | \$51,875.00 | \$57,876.00 | \$65,539.00 | \$70,189.00  | ↑                           | 7%  |
| <b>Family Income</b>                                     |             |             |             |              |                             |     |
| Average Family Income                                    | \$71,386.00 | \$84,620.00 | \$96,727.00 | \$104,953.00 | ↑                           | 9%  |
| Median Family Income                                     | \$51,875    | \$70,720.00 | \$80,046.00 | \$89,022.00  | ↑                           |     |
| <b>Lone-Parent Families</b>                              |             |             |             |              |                             |     |
| Average Family Income                                    | N.A.        | N.A.        | N.A.        | \$58,828.00  | —                           | —   |
| Median Family Income                                     | N.A.        | N.A.        | N.A.        | \$46,192.00  | —                           | —   |

Data Note: Income figures based on previous reporting year (1995, 2000, 2005 & 2010).



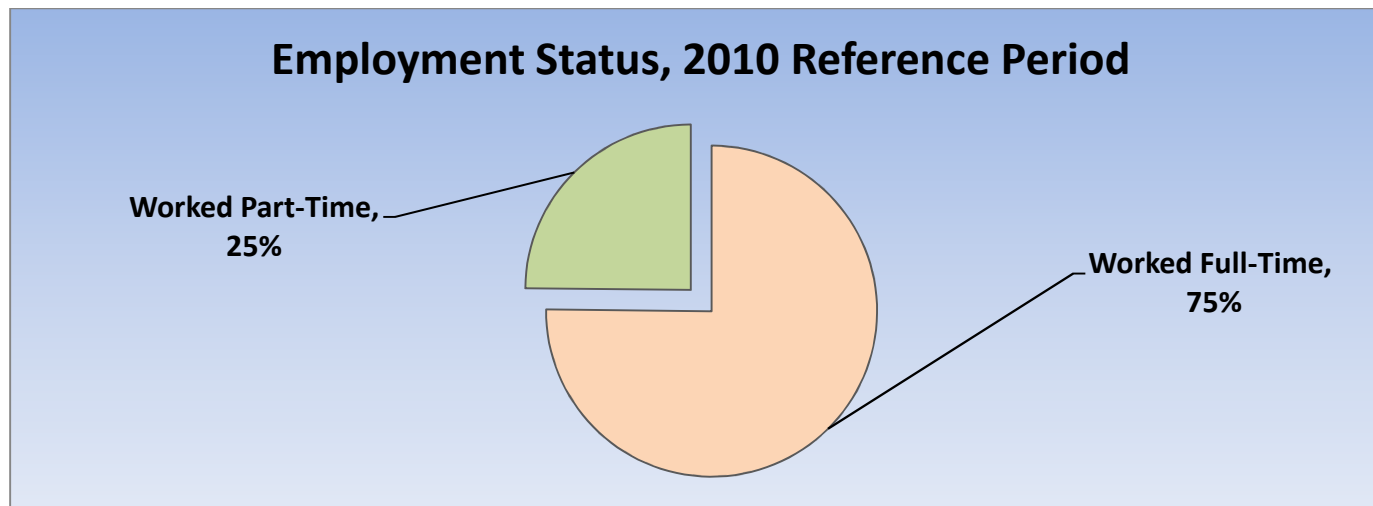
| Labour Force by National Occupational Classification | 1996  | 2001  | 2006  | 2011  | Change From Previous Period | As a % of Labour Force |
|--|-------|-------|-------|-------|-----------------------------|------------------------|
| Management   | 1,315 | 1,325 | 1,130 | 1,065 | ↓ (-6%)                     | 11%                    |
| Business, Finance and Administration                 | 1,610 | 1,725 | 1,730 | 1,680 | ↓ (-3%)                     | 18%                    |
| Natural and Applied Science Fields                   | 375   | 610   | 605   | 680   | ↑ 12%                       | 7%                     |
| Health Care  | 670   | 750   | 825   | 890   | ↑ 8%                        | 9%                     |
| Education, Government, Social & Community Services   | 795   | 890   | 985   | 1,130 | ↑ 15%                       | 12%                    |
| Art, Culture, recreation and Sport                   | 210   | 230   | 290   | 270   | ↓ (-7%)                     | 3%                     |
| Sales and Service Sector                             | 2,355 | 2,015 | 2,320 | 2,565 | ↑ 11%                       | 27%                    |
| Trades, Transport and Equipment Operators            | 660   | 800   | 800   | 735   | ↓ (-8%)                     | 8%                     |
| Natural Resources and Agriculture                    | 115   | 110   | 60    | 85    | ↑ 42%                       | 1%                     |
| Manufacturing and Utilities                          | 450   | 425   | 405   | 330   | ↓ (-19%)                    | 3%                     |

### Employment Trends by Occupational Breakout, 2006-2011



| Class of Worker      | 1996         | 2001         | 2006         | 2011         | Change From Previous Period | As a % Neighbourhood |
|----------------------|--------------|--------------|--------------|--------------|-----------------------------|----------------------|
| <b>Employee</b>      | <b>7,430</b> | <b>7,735</b> | <b>8,040</b> | <b>8,530</b> | <b>↑ 6%</b>                 | <b>90%</b>           |
| Female               | 3,740        | 3,960        | 4,085        | 4,455        |                             |                      |
| Male                 | 3,690        | 3,775        | 3,955        | 4,070        |                             |                      |
| <b>Self-Employed</b> | <b>1,125</b> | <b>1,125</b> | <b>1,095</b> | <b>905</b>   | <b>↓ (-17%)</b>             | <b>10%</b>           |
| Female               | 340          | 380          | 380          | 330          |                             |                      |
| Male                 | 785          | 745          | 715          | 580          |                             |                      |

| Employment Status        | 1996 | 2001 | 2006 | 2011  | Change From Previous Period | As a % of Active Labour Force |
|--------------------------|------|------|------|-------|-----------------------------|-------------------------------|
| Worked Full-Time in 2010 | N.A. | N.A. | N.A. | 6,935 | N.A.                        | 75%                           |
| Worked Part-Time in 2010 | N.A. | N.A. | N.A. | 2,290 | N.A.                        | 25%                           |



| Mode of Transport to Work        | 1996        | 2001        | 2006        | 2011            | Change From Previous Period | As a % of Neighbourhood |
|----------------------------------|-------------|-------------|-------------|-----------------|-----------------------------|-------------------------|
| Automobile -As a Driver          | 6,075       | 6,260       | 6,520       | 6,425           | ↓ (-1%)                     | 77%                     |
| Car-Pool                         | 620         | 515         | 625         | 630             | ↑ <1%                       | 8%                      |
| Public Transportation            | 395         | 540         | 550         | 730             | ↑ 33%                       | 9%                      |
| Walked or Bicycled               | 465         | 430         | 365         | 495             | ↑ 36%                       | 6%                      |
| Other Modes                      | 20          | 25          | 40          | 80              | ↑ 100%                      | 1%                      |
| <b>Median Commuting Duration</b> | <b>N.A.</b> | <b>N.A.</b> | <b>N.A.</b> | <b>20.1 min</b> |                             |                         |

| Place of Work                    | 1996  | 2001  | 2006  | 2011  | Change From Previous Period | As a % of Neighbourhood |
|----------------------------------|-------|-------|-------|-------|-----------------------------|-------------------------|
| Worked at Home                   | 555   | 685   | 560   | 525   | ↓ (-6%)                     | 6%                      |
| Worked at a Fixed Address        | 7,130 | 7,260 | 7,430 | 7,595 | ↑ 2%                        | 85%                     |
| No Fixed Workplace Address       | 445   | 520   | 685   | 765   | ↑ 12%                       | 9%                      |
| Worked within Municipality       | 6,125 | 6,380 | 6,540 | N.A.  | — —                         |                         |
| Work in a different Municipality | 795   | 880   | 900   | N.A.  | — —                         |                         |
| Worked outside Canada            | 25    | 50    | 75    | 20    | ↓ (-73%)                    | <1%                     |

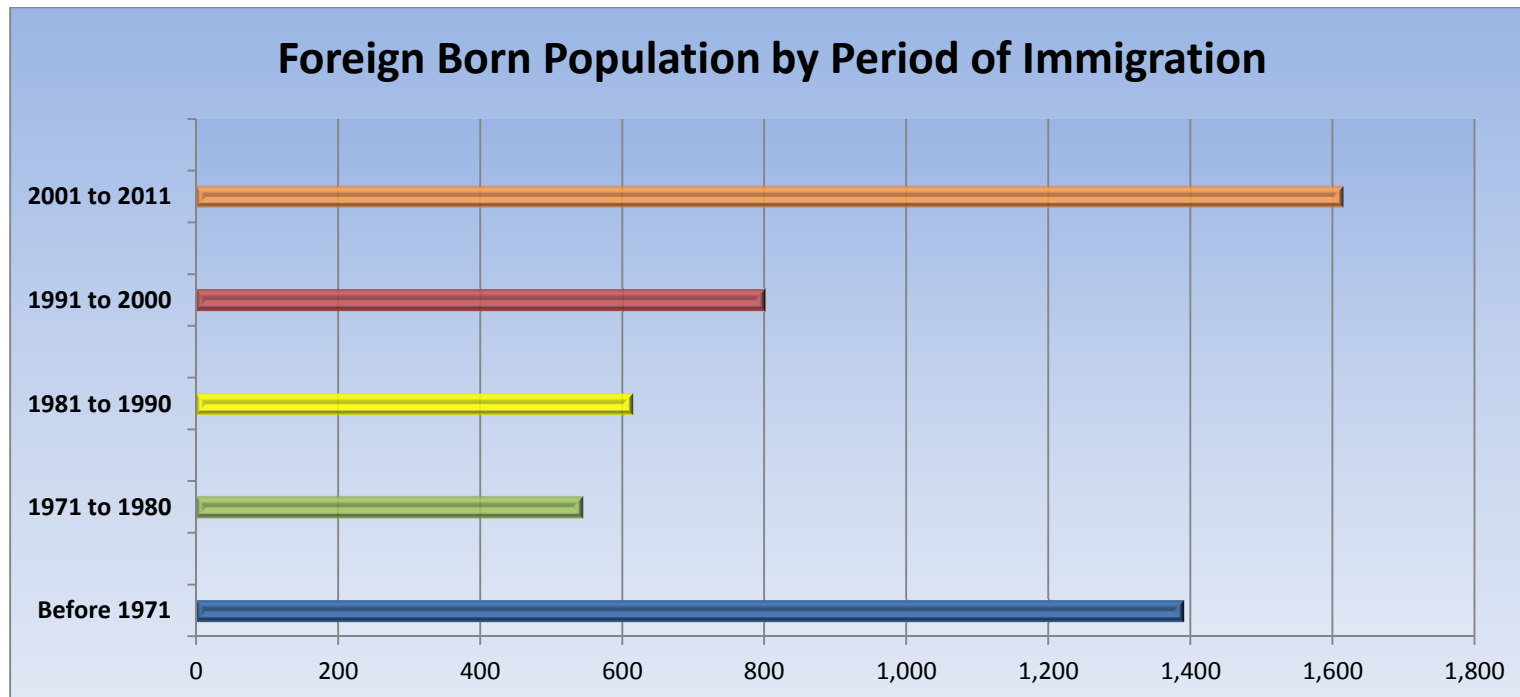


| Mobility/Migration Status                   | 1996         | 2001         | 2006         | 2011         | Change From Previous Period | As a % of Neighbourhood |
|---|--------------|--------------|--------------|--------------|-----------------------------|-------------------------|
| Lived at the same address 5 years ago       | 8,450        | 9,115        | 9,090        | 10,895       | ↑                           | 61%                     |
| <b>Moved sometime with the last 5 years</b> | <b>7,480</b> | <b>7,670</b> | <b>8,785</b> | <b>6,930</b> | ↓ (-21%)                    | <b>39%</b>              |
| <b>Internal Migrants</b>                    | <b>1,940</b> | <b>2,325</b> | <b>1,875</b> | <b>1,290</b> | ↓ (-32%)                    | <b>60%</b>              |
| - Intra-provincial                          | 1,555        | 1,845        | 1,600        | 1,040        | ↓                           |                         |
| - Inter-provincial                          | 385          | 480          | 275          | 245          | ↓                           |                         |
| <b>External Migrants</b>                    | <b>895</b>   | <b>1,375</b> | <b>1,160</b> | <b>854</b>   | ↓ (-26%)                    | <b>40%</b>              |
| Lived at the same address 1 years ago       | 13,870       | 14,475       | 15,745       | 15,960       | ↑ 1%                        | 86%                     |
| <b>Moved sometime with the last year</b>    | <b>2,835</b> | <b>2,940</b> | <b>2,875</b> | <b>2,525</b> | ↓ (-12%)                    | <b>14%</b>              |
| <b>Internal Migrants</b>                    | <b>545</b>   | <b>725</b>   | <b>725</b>   | <b>505</b>   | ↓ (-30%)                    | <b>81%</b>              |
| - Intra-provincial                          | 425          | 660          | 620          | 425          | ↓ (-31%)                    |                         |
| - Inter-provincial                          | 120          | 65           | 100          | 80           | ↓ (-20%)                    |                         |
| <b>External Migrants</b>                    | <b>300</b>   | <b>305</b>   | <b>215</b>   | <b>115</b>   | ↓ (-47%)                    | <b>19%</b>              |

| Place of Birth                                    | 1996        | 2001        | 2006         | 2011         | Change From Previous Period |               | As a % of Neighbourhood |
|---|-------------|-------------|--------------|--------------|-----------------------------|---------------|-------------------------|
| <b>Total Immigrant Population</b>                 | <b>N.A.</b> | <b>N.A.</b> | <b>4,935</b> | <b>4,960</b> | <b>↑</b>                    | <b>&lt;1%</b> | <b>26%</b>              |
| <b>Place of Birth by Continent</b>                |             |             |              |              |                             |               |                         |
| North America (US only)                           | N.A.        | N.A.        | 205          | 170          | ↓                           | (-17%)        | 1%                      |
| Africa  | N.A.        | N.A.        | 265          | 240          | ↓                           | (-9%)         | 1%                      |
| Asia  | N.A.        | N.A.        | 1,765        | 1,685        | ↓                           | (-4%)         | 9%                      |
| Caribbean   | N.A.        | N.A.        | 125          | 40           | ↓                           | (-64%)        | <1%                     |
| Central and South America                         | N.A.        | N.A.        | 360          | 395          | ↓                           | (-8%)         | 2%                      |
| Europe  | N.A.        | N.A.        | 2,170        | 2,255        | ↑                           | 4%            | 12%                     |
| <b>Recent Immigration by Continent, 2006-2011</b> |             |             |              |              |                             |               |                         |
| <b>Recent Immigrants</b>                          | <b>N.A.</b> | <b>N.A.</b> | <b>980</b>   | <b>1,070</b> | <b>↑</b>                    | <b>9%</b>     | <b>6%</b>               |
| North America (US only)                           | N.A.        | N.A.        | 65           | 20           | ↓                           | (-69%)        | <1%                     |
| Africa  | N.A.        | N.A.        | 105          | 90           | ↓                           | (-14%)        | <1%                     |
| Asia  | N.A.        | N.A.        | 475          | 535          | ↑                           | 13%           | 3%                      |
| Caribbean   | N.A.        | N.A.        | 25           | 0            | ↓                           | (-100%)       | 0%                      |
| Central and South America                         | N.A.        | N.A.        | 245          | 270          | ↑                           | 10%           | 1%                      |
| Europe  | N.A.        | N.A.        | 65           | 125          | ↑                           | 92%           | 1%                      |

| Immigration by Place of Birth | 1996 | 2001 | 2006 | 2011 | Change From Previous Period | As a % of Neighbourhood |
|-------------------------------|------|------|------|------|-----------------------------|-------------------------|
| 1. United Kingdom             | N.A. | N.A. | 690  | 705  | ↑ 2%                        | 4%                      |
| 2. Colombia                   | N.A. | N.A. | 280  | 310  | ↑ 11%                       | 2%                      |
| 3. Iraq                       | N.A. | N.A. | N.A. | 265  |                             | 1%                      |
| 4. India                      | N.A. | N.A. | 255  | 230  | ↓ (-10%)                    | 1%                      |
| 5. Bosnia                     | N.A. | N.A. | N.A. | 210  |                             | 1%                      |
| 6. South Korea                | N.A. | N.A. | N.A. | 175  |                             | 1%                      |
| 7. United States              | N.A. | N.A. | 205  | 170  | ↓                           | 1%                      |
| 8. Poland                     | N.A. | N.A. | N.A. | 160  |                             | <1%                     |
| 9. Egypt                      | N.A. | N.A. | N.A. | 150  |                             | <1%                     |
| 10. Netherlands               | N.A. | N.A. | N.A. | 145  |                             | <1%                     |

| Period of Immigration | 1996 | 2001 | 2006  | 2011  | Change From Previous Period | As a % of Neighbourhood |
|-----------------------|------|------|-------|-------|-----------------------------|-------------------------|
| Before 1971           | N.A. | N.A. | 1,100 | 1,390 | ↑ 26%                       | 7%                      |
| 1971 to 1980          | N.A. | N.A. | 870   | 545   | ↓ (-37%)                    | 3%                      |
| 1981 to 1990          | N.A. | N.A. | 1,150 | 615   | ↓ (-47%)                    | 3%                      |
| 1991 to 2000          | N.A. | N.A. | 1,880 | 800   | ↓ (-57%)                    | 4%                      |
| 2001 to 2011          | N.A. | N.A. | 1,250 | 1,615 | ↑ (29%)                     | 9%                      |



| Language                                  | 1996   | 2001   | 2006   | 2011   | Change From Previous Period | As a % of Neighbourhood |
|---|--------|--------|--------|--------|-----------------------------|-------------------------|
| <b>Knowledge of Official Languages</b>    |        |        |        |        |                             |                         |
| English Only                              | 15,120 | 15,805 | 17,040 | 16,915 | ↓ (<-1%)                    | 89%                     |
| French Only                               | 10     | 10     | 20     | 15     | ↓ (-25%)                    | <1%                     |
| English and French                        | 1,520  | 1,510  | 1,490  | 1,575  | ↑ 6%                        | 8%                      |
| Neither English or French                 | 245    | 205    | 255    | 250    | ↓ (-2%)                     | 1%                      |
| <b>Language Spoken Most Often at Home</b> |        |        |        |        |                             |                         |
| English                                   | 14,700 | 13,980 | 15,755 | 15,810 | ↑ <1%                       | 84%                     |
| French                                    | 75     | 10     | 80     | 85     | ↑ 6%                        | <1%                     |
| Non-Official Language                     | 1,705  | 1,155  | 2,590  | 2,190  | ↓ (-15%)                    | 12%                     |
| <b>Mother Tongue *</b>                    |        |        |        |        |                             |                         |
| English                                   | 13,115 | 13,160 | 13,815 | 13,805 | ↓ (<-1%)                    | 73%                     |
| French                                    | 195    | 205    | 255    | 260    | ↑ 2%                        | 1%                      |
| Non-Official Language                     | 3,285  | 3,970  | 4,600  | 4,325  | ↓ (-6%)                     | 23%                     |

\* Statistics Canada defines 'mother tongue' as the first language learned in childhood and still understood by the individual at the time of census reporting.

| Non-Official Languages Spoken<br>Top 10 Reported | 1996 | 2001 | 2006  | 2011 | Change From<br>Previous Period | As a % of<br>Neighbourhood |
|--|------|------|-------|------|--------------------------------|----------------------------|
| 1. Arabic  | N.A. | N.A. | 1,045 | 885  | ↓ (-15%)                       | 5%                         |
| 2. Spanish                                       | N.A. | N.A. | 725   | 675  | ↓ 7%                           | 4%                         |
| 3. German  | N.A. | N.A. | 275   | 360  | ↑ 31%                          | 2%                         |
| 4. Italian                                       | N.A. | N.A. | 290   | 305  | ↑ 5%                           | 2%                         |
| 5. Chinese*                                      | N.A. | N.A. | N.A.  | 290  | — —                            | 2%                         |
| 6. Polish  | N.A. | N.A. | 285   | 270  | ↓ 5%                           | 1%                         |
| 7. Persian (Farsi)                               | N.A. | N.A. | 270   | 260  | ↓ 4%                           | 1%                         |
| 8. Korean  | N.A. | N.A. | 215   | 215  | — —                            | 1%                         |
| 9. Hindi   | N.A. | N.A. | N.A.  | 205  | — —                            | 1%                         |
| 10. Portuguese                                   | N.A. | N.A. | 240   | 190  | — —                            | 1%                         |

\* Refers to Cantonese and Mandarin language speakers as well as others who do not specify otherwise.

| Religious Identification | 1996 | 2001 | 2006 | 2011   | Change From Previous Period | As a % of Neighbourhood |
|--------------------------|------|------|------|--------|-----------------------------|-------------------------|
| Buddhist                 | N.A. | N.A. | N.A. | 50     |                             | <1%                     |
| Christian                | N.A. | N.A. | N.A. | 12,495 |                             | 66%                     |
| Anglican                 | N.A. | N.A. | N.A. | 1,380  |                             | 7%                      |
| Baptist                  | N.A. | N.A. | N.A. | 400    |                             | 2%                      |
| Catholic                 | N.A. | N.A. | N.A. | 5,700  |                             | 30%                     |
| Orthodox                 | N.A. | N.A. | N.A. | 580    |                             | 3%                      |
| Lutheran                 | N.A. | N.A. | N.A. | 265    |                             | 1%                      |
| Pentecostal              | N.A. | N.A. | N.A. | 215    |                             | 1%                      |
| Presbyterian             | N.A. | N.A. | N.A. | 445    |                             | 2%                      |
| United Church            | N.A. | N.A. | N.A. | 1,955  |                             | 10%                     |
| Other Christian          | N.A. | N.A. | N.A. | 235    |                             | 1%                      |
| Hindu                    | N.A. | N.A. | N.A. | 235    |                             | 1%                      |
| Jewish                   | N.A. | N.A. | N.A. | 40     |                             | <1%                     |
| Muslim                   | N.A. | N.A. | N.A. | 1,400  |                             | 7%                      |
| Sikh                     | N.A. | N.A. | N.A. | 25     |                             | <1%                     |
| Aboriginal Spirituality  | N.A. | N.A. | N.A. | 0      |                             | 0%                      |

Notes:

- (1) Source Data –Statistics Canada. 1996-2011 Census Data, Customized Profiles. Ottawa, Canada
- (2) Data also derived from Statistics Canada’s National Household Survey (NHS)
- (3) Customized Community and Neighbourhood Profiles tabulated and compiled by the City of London’s Planning Division –Policy Planning and Research Section.