



Talbot Neighbourhood Profile

For further information contact:

John-Paul Sousa

Planning Research Analyst

Direct: (519) 661-2500 ext. 5989 | email: jpsousa@london.ca

Date Created: Jan. 2014

Neighbourhood Profile -Talbot Planning District



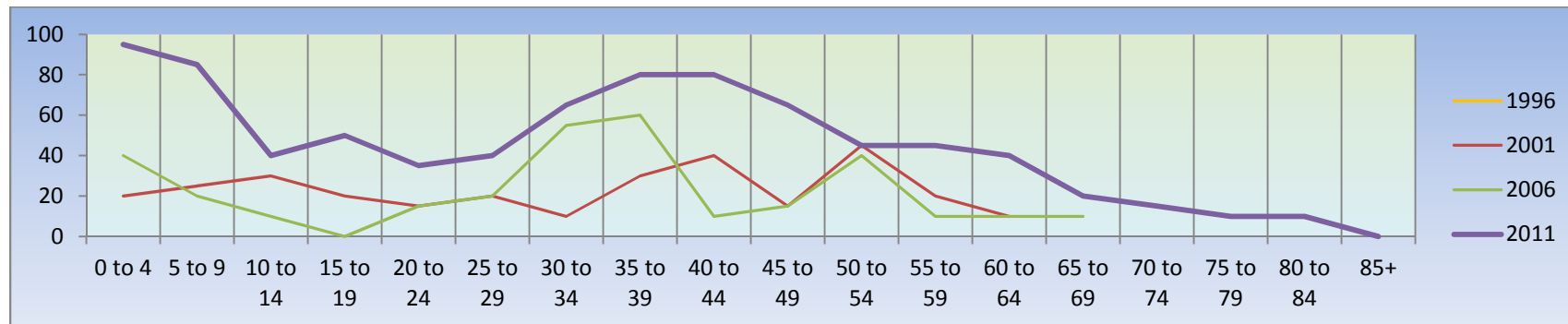
Coordinate System: NAD 1983 UTM Zone 17N
Projection: Transverse Mercator
Datum: North American 1983

Population Characteristics & Age Distribution

Talbot Neighbourhood	1996	2001	2006	2011	Change From Previous Period	
Total Population	65	325	335	1,590	↑	375%
Female	N.A.	165	180	815	↑	353%
Male	N.A.	160	160	775	↑	384%

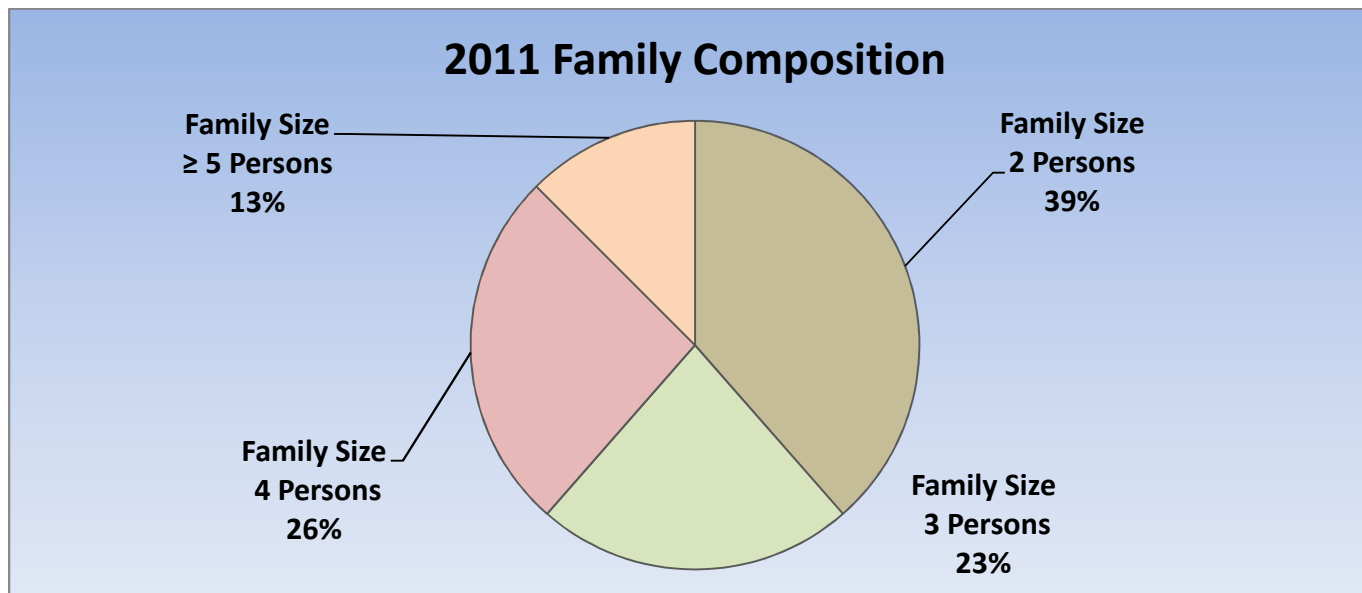
Age Structure	1996	2001	2006	2011	Change From Previous Period		As a % of Neighbourhood
0-19	N.A.	95	70	270	↑	286%	17%
0 to 4	N.A.	20	40	95	↑	138%	6%
5 to 9	N.A.	25	20	85	↑	325%	5%
10 to 14	N.A.	30	10	40	↑	300%	3%
15 to 19	N.A.	20	0	50	↑	100%	3%
20-44	N.A.	115	160	300	↑	88%	19%
45-64	N.A.	90	75	195	↑	160%	12%
65+	N.A.	40	40	55	↑	38%	3%
Median Age	N.A.	N.A.	N.A.	34.8			

2011 Census Age Cohort Breakout	Male	Female	Total	As a % of Neighbourhood
0 to 4	95	85	180	11.39%
5 to 9	85	60	145	9.12%
10 to 14	40	40	80	5.06%
15 to 19	50	40	90	5.70%
20 to 24	35	30	65	4.11%
25 to 29	40	45	85	5.38%
30 to 34	65	90	155	9.81%
35 to 39	80	80	160	10.13%
40 to 44	80	60	140	8.86%
45 to 49	65	60	125	7.91%
50 to 54	45	65	110	6.96%
55 to 59	45	35	80	5.06%
60 to 64	40	35	75	4.75%
65 to 69	20	15	35	2.22%
70 to 74	15	10	25	1.58%
75 to 79	10	5	15	0.95%
80 to 84	10	5	15	0.95%
85+	0	0	0	0%
Total	820	760	1,580	



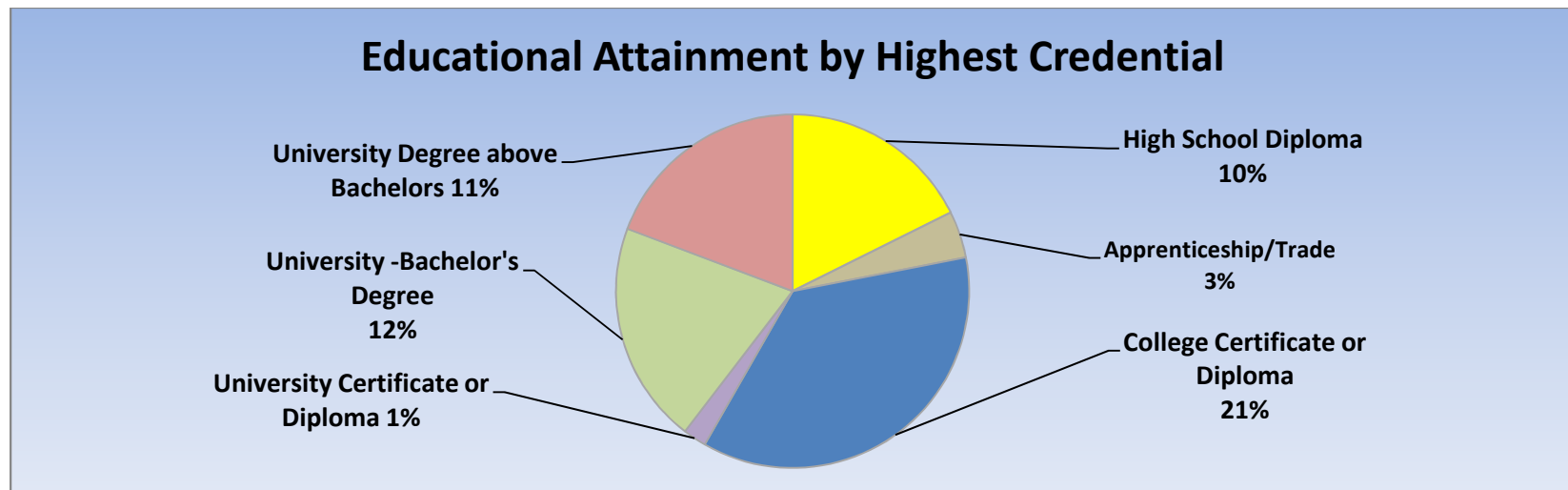
Marital Status	1996	2001	2006	2011	Change From Previous Period		As a % of Neighbourhood
Single	N.A.	50	50	215	↑	330%	14%
Married	N.A.	165	190	830	↑	337%	52%
Common-Law	N.A.	20	40	85	↑	113%	5%
Divorced	N.A.	25	15	20	↑	33%	1%
Separated	N.A.	15	20	20	–	–	1%
Widowed	N.A.	0	10	15	↑	50%	1%
Citizenship, Immigration & Ethnic Identity	1996	2001	2006	2011	Change From Previous Period		As a % of Neighbourhood
Citizenship							
Canadian Citizens	N.A.	310	310	1,545	↑	398%	97%
Non-Canadian Citizens	N.A.	15	25	50	↑	100%	3%
Immigration Status							
Canadian Born Population	N.A.	280	240	1,350	↑	463%	85%
Foreign Born Population	N.A.	45	100	240	↑	140%	15%
Visible Minority Population	N.A.	20	55	375	↑	582%	24%
Aboriginal Identity Population	N.A.	0	0	0	–	–	0%

Family Composition	1996	2001	2006	2011	Change From Previous Period	As a % of Neighbourhood
Number of Census Families	N.A.	110	120	475	↑ 296%	
Family Size - 2 Persons	N.A.	55	75	185	↑ 147%	39%
Family Size - 3 Persons	N.A.	30	10	110	↑ 1000%	23%
Family Size - 4 Persons	N.A.	30	25	125	↑ 400%	26%
Family Size - ≥ 5 Persons	N.A.	0	0	60	↑ 100%	13%
Census Family - Average Size	3.25	2.85	2.75	3.2		



Family Structure & Number of Children	1996	2001	2006	2011	Change From Previous Period	
Married Couples	N.A.	80	90	415	↑	361%
Without Children	N.A.	35	55	140	↑	155%
With Children	N.A.	45	40	275	↑	588%
Common-Law	N.A.	10	20	45	↑	125%
Without Children	N.A.	0	15	30	↑	100%
With Children	N.A.	10	0	15	↑	100%
Lone Parent Families	N.A.	15	10	20	↑	100%
Female Headed	N.A.	15	10	15	↑	50%
1 Child	N.A.	15	10	10	–	–
2 Children	N.A.	0	0	5	↑	100%
≥ 3 Children	N.A.	0	0	0	–	–
Male Headed	N.A.	0	0	10	↑	100%
1 Child	N.A.	0	0	5	↑	100%
2 Children	N.A.	0	0	0	–	–
≥ 3 Children	N.A.	0	0	0	–	–

Educational Attainment by Credential	1996	2001	2006	2011	Change From Previous Period	As a % of Neighbourhood
No Certificate, Diploma or Degree	N.A.	N.A.	10	0	↓ (-100%)	0%
High School Diploma or Equivalent	N.A.	N.A.	50	165	↑ 230%	10%
Apprenticeship, or Trade Certificate	N.A.	N.A.	10	40	↑ 300%	3%
College Certificate or Diploma	N.A.	N.A.	50	340	↑ 580%	21%
University Certificate or Diploma	N.A.	N.A.	N.A.	20	↑ 100%	1%
University -Bachelor's Degree	N.A.	N.A.	105	190	↑ 81%	12%
University Degree above bachelor level (M.A. or PhD)	N.A.	N.A.	25	180	↑ 620%	11%

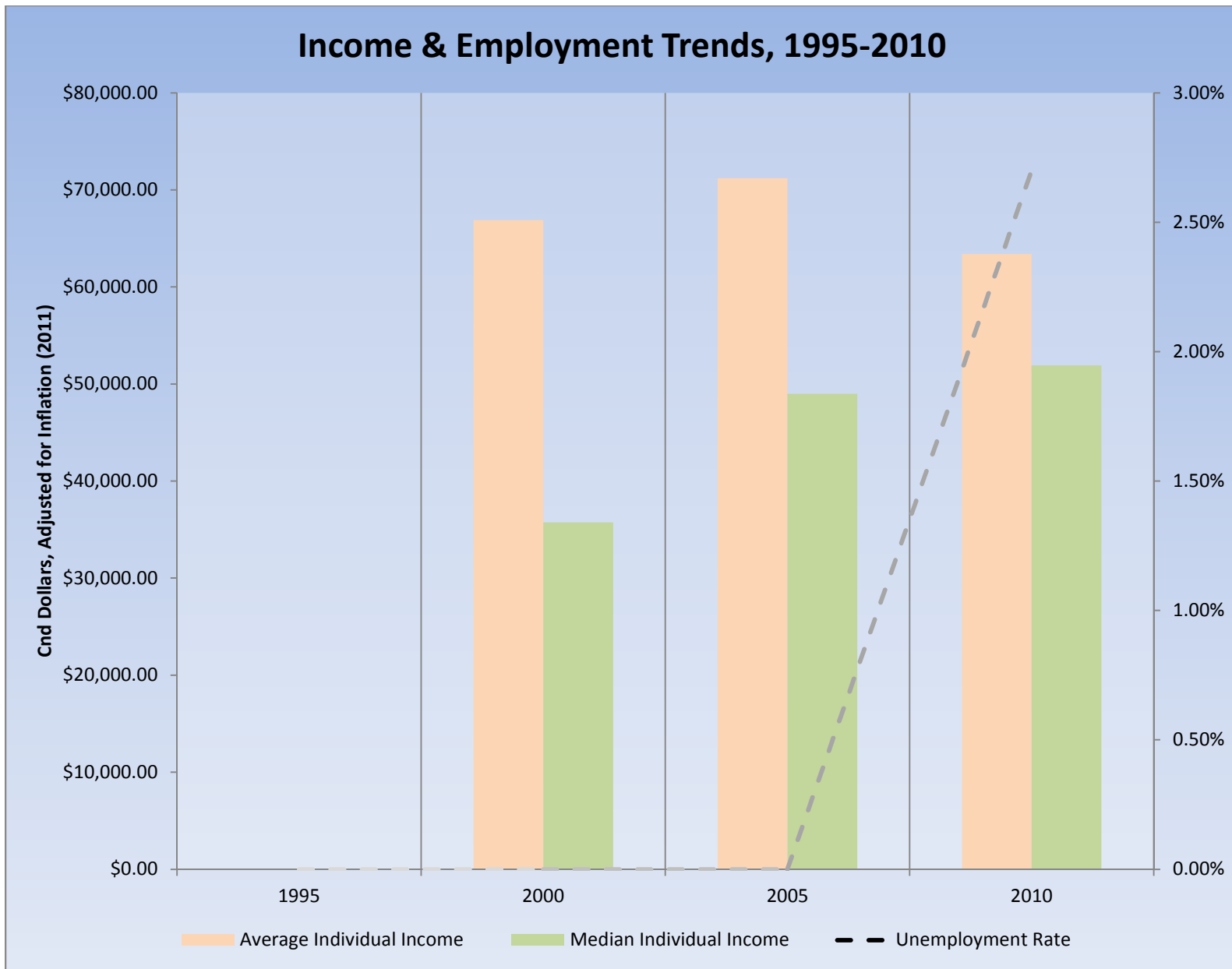


Housing by Structure Type & Tenure	1996	2001	2006	2011	Change From Previous Period		As a % of Neighbourhood
Total Occupied Dwellings	20	125	135	515	↑	281%	
Single-Detached	N.A.	120	125	495	↑	296%	96%
Semi-Detached	N.A.	0	0	0	—	—	0%
Row House	N.A.	0	0	15	↑	100%	3%
Duplex	N.A.	0	0	5	↑	100%	1%
Apartment < 5 Storeys	N.A.	0	0	0	—	—	0%
Apartment ≥ 5 Storeys	N.A.	0	0	0	—	—	0%
Number of Owned Dwellings	N.A.	100	130	500	↑	285%	
Owned as a % of Total	N.A.	92%	93%	100%	↑		100%
Number of Rented Dwellings	N.A.	10	10	0	↓		0%
Rented as a % of Total	N.A.	8%	7%	0%	↓		
Average # of Rooms	N.A.	8.5	7.4	8.5	↑		
Average # of Bedrooms	N.A.	3.3	3.2	N.A.	—		
Average Gross Rent	N.A.	N.A.	N.A.	N.A.	—	—	
Average Value of Dwelling	N.A.	\$276,096.00	\$343,554.00	\$431,056.00	↑	25%	

Labour Market Indicators	1996	2001	2006	2011	Change From Previous Period	As a % of Work Force
Total Labour Force ≥ 15 years	N.A.	N.A.	N.A.	925	—	
Female	N.A.	N.A.	N.A.	465	—	50%
Male	N.A.	N.A.	N.A.	465	—	50%
Unemployment Rate	N.A.	N.A.	N.A.	2.70%	—	
Female	N.A.	N.A.	N.A.	4.30%	—	
Male	N.A.	N.A.	N.A.	0%	—	
Employment Rate	N.A.	N.A.	N.A.	77.20%	—	
Participation Rate	N.A.	N.A.	N.A.	79.70%	—	
Female	N.A.	N.A.	N.A.	75.60%	—	
Male	N.A.	N.A.	N.A.	85.30%	—	
Labour Force by Sector						
Primary (Agriculture & Resources)	N.A.	N.A.	N.A.	0	—	0%
Secondary (Construction & Manufacturing)	N.A.	N.A.	N.A.	100	—	11%
Tertiary Services	N.A.	N.A.	N.A.	820	—	89%

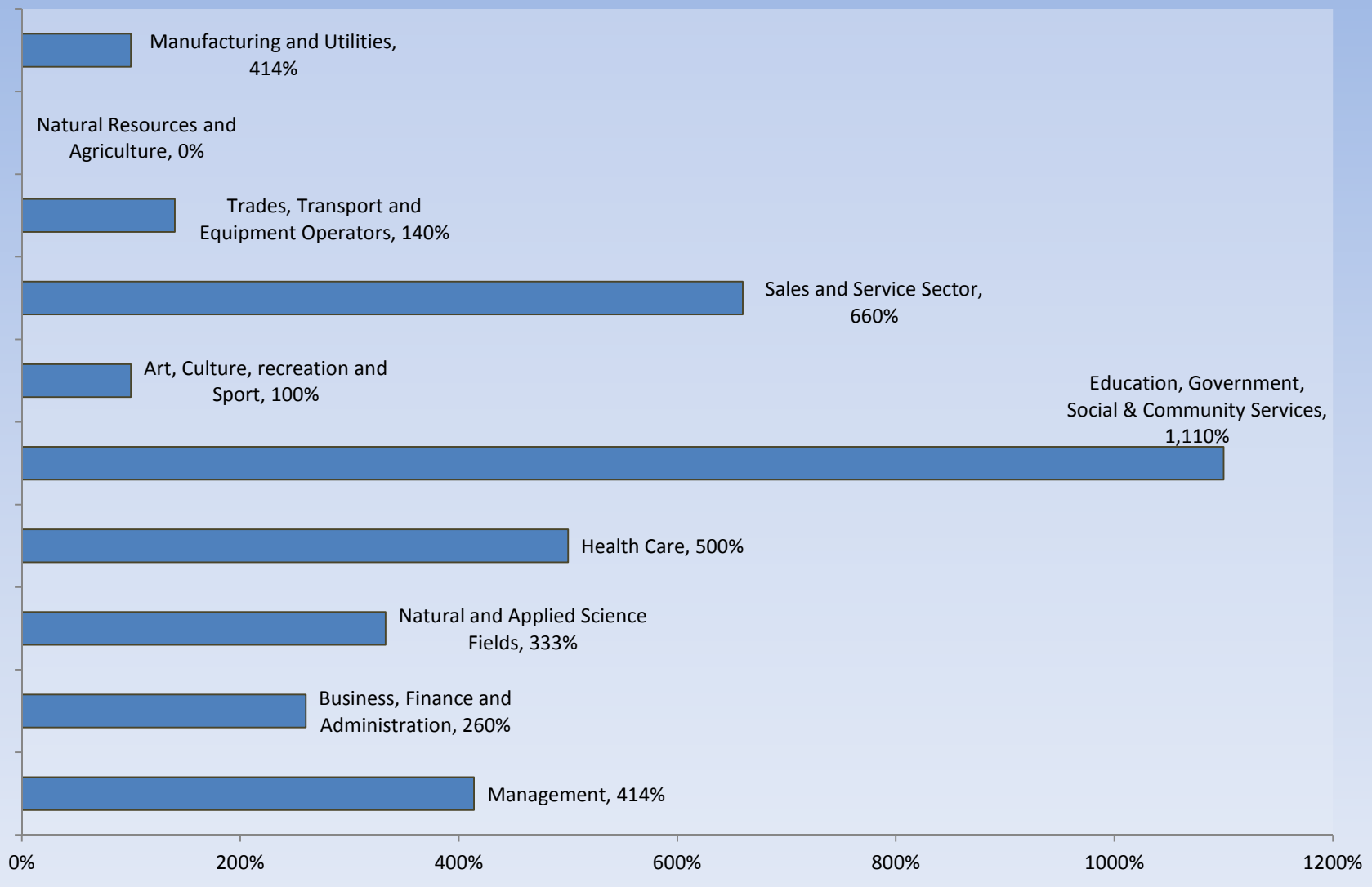
Income Characteristics of Economically Active Population	1996	2001	2006	2011	Change From Previous Period	
Individual Income						
Average Income	N.A.	\$53,106.50	\$63,394.00	\$61,377.00	↓	(-3%)
Median Income	N.A.	\$28,371.50	\$43,616.00	\$50,277.00	↑	15%
Income by Gender						
Average Income – Male	N.A.	\$70,990.00	\$91,425.00	\$79,775.00	↓	(-13%)
Average Income - Female	N.A.	\$30,539.00	\$48,611.00	\$44,624.00	↓	(-8%)
Median Income – Male	N.A.	\$35,223.00	\$73,770.00	\$70,924.00	↓	(-4%)
Median Income - Female	N.A.	\$26,204.00	\$39,427.00	\$38,625.00	↓	(-2%)
Household Income						
Average Household Income	N.A.	\$106,623.00	\$123,208.00	\$136,328.00	↑	11%
Median Household Income	N.A.	\$88,006.00	\$98,156.00	\$125,606.00	↑	28%
Family Income						
Average Family Income	N.A.	\$113,801.00	\$131,372.00	\$135,600.00	↑	3%
Median Family Income	N.A.	\$89,619.00	\$102,383.00	\$127,280.00	↑	24%
Lone-Parent Families						
Average Family Income	N.A.	N.A.	N.A.	N.A.	—	—
Median Family Income	N.A.	N.A.	N.A.	N.A.	—	—

Data Note: Income figures based on previous reporting year (1995, 2000, 2005 & 2010).



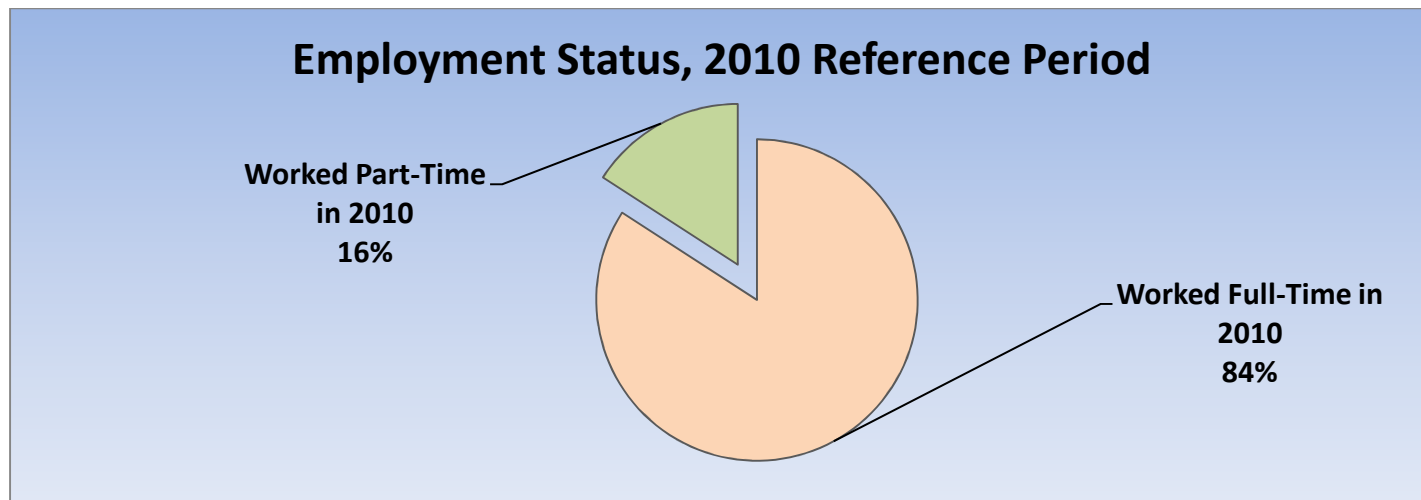
Labour Force by National Occupational Classification	1996	2001	2006	2011	Change From Previous Period		As a % of Labour Force
Management	N.A.	30	35	180	↑	414%	20%
Business, Finance and Administration	N.A.	25	25	90	↑	260%	10%
Natural and Applied Science Fields	N.A.	10	15	65	↑	333%	7%
Health Care	N.A.	0	25	150	↑	500%	16%
Education, Government, Social & Community Services	N.A.	15	10	120	↑	1,100%	13%
Art, Culture, recreation and Sport	N.A.	0	0	30	↑	100%	3%
Sales and Service Sector	N.A.	45	25	185	↑	660%	20%
Trades, Transport and Equipment Operators	N.A.	45	25	60	↑	140%	7%
Natural Resources and Agriculture	N.A.	10	0	0	–	–	0%
Manufacturing and Utilities	N.A.	15	0	40	↑	100%	4%

Employment Trends by Occupational Breakout, 2006-2011



Class of Worker	1996	2001	2006	2011	Change From Previous Period	As a % Work Force
Employee	N.A.	175	155	810	↑ 423%	88%
Female	N.A.	85	75	425		
Male	N.A.	90	80	380		
Self-Employed	N.A.	40	15	110	↑ 633%	12%
Female	N.A.	10	0	30		
Male	N.A.	30	15	80		

Employment Status	1996	2001	2006	2011	Change From Previous Period	As a % of Active Labour Force
Worked Full-Time in 2010	N.A.	N.A.	N.A.	770	N.A.	84%
Worked Part-Time in 2010	N.A.	N.A.	N.A.	145	N.A.	16%



Mode of Transport to Work	1996	2001	2006	2011	Change From Previous Period	As a % of Work Force
Automobile -As a Driver	N.A.	160	130	780	↑ 500%	92%
Car-Pool	N.A.	10	15	65	↑ 333%	8%
Public Transportation	N.A.	0	0	0	— —	0%
Walked or Bicycled	N.A.	0	0	0	— —	0%
Other Modes	N.A.	0	0	0	— —	0%
Median Commuting Duration	N.A.	N.A.	N.A.	20.3		

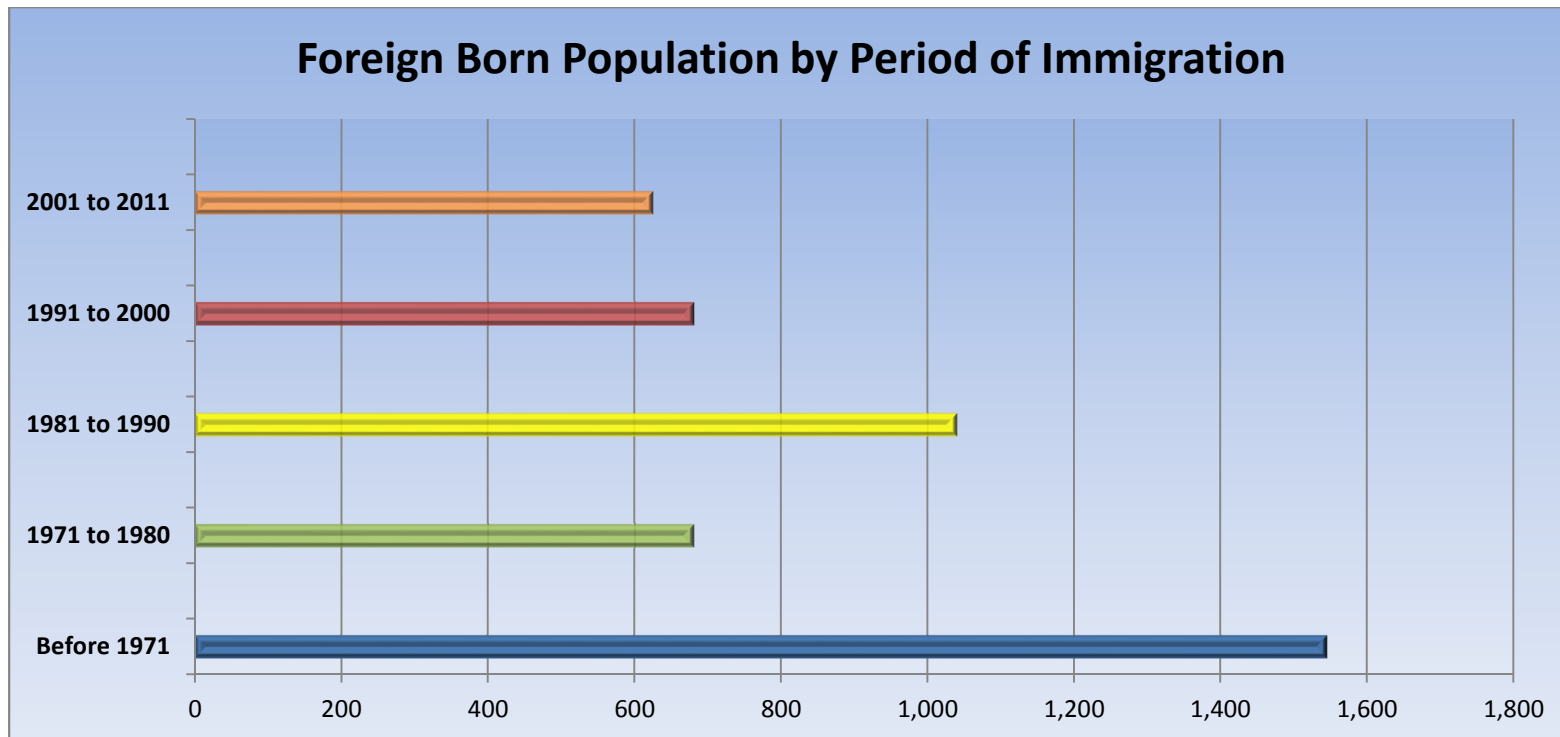
Place of Work	1996	2001	2006	2011	Change From Previous Period	As a % of Work Force
Worked at Home	N.A.	25	10	35	↑ 250%	4%
Worked at a Fixed Address	N.A.	150	140	800	↑ 471%	90%
No Fixed Workplace Address	N.A.	25	10	55	↑ 450%	6%
Worked within Municipality	N.A.	90	115	N.A.	— —	
Work in a different Municipality	N.A.	25	25	N.A.	— —	
Worked outside Canada	N.A.	25	0	0	— —	

Mobility/Migration Status	1996	2001	2006	2011	Change From Previous Period	As a % of Neighbourhood
Lived at the same address 5 years ago	N.A.	225	65	210	↑	15%
Moved sometime with the last 5 years	N.A.	85	230	1,190	↑ 417%	85%
Internal Migrants	N.A.	0	25	345	↑ 1,280%	95%
- Intra-provincial	N.A.	0	25	250	↑	
- Inter-provincial	N.A.	0	0	100	↑	
External Migrants	N.A.	0	30	20	↓ (-33%)	5%
Lived at the same address 1 years ago	N.A.	315	295	1,140	↑ 286%	77%
Moved sometime with the last year	N.A.	0	35	350	↑ 900%	23%
Internal Migrants	N.A.	0	0	105	↑ 100%	100%
- Intra-provincial	N.A.	0	0	100	↑ 100%	
- Inter-provincial	N.A.	0	0	5	↑ 100%	
External Migrants	N.A.	0	0	0	- -	0

Place of Birth	1996	2001	2006	2011	Change From Previous Period		As a % of Neighbourhood
Total Immigrant Population	N.A.	N.A.	100	235	↑	135%	15%
Place of Birth by Continent							
North America (US only)	N.A.	N.A.	N.A.	0	—	—	0%
Africa	N.A.	N.A.	N.A.	0	—	—	0%
Asia	N.A.	N.A.	N.A.	175	↑	100%	11%
Caribbean	N.A.	N.A.	15	0	↓	(-100%)	0%
Central and South America	N.A.	N.A.	N.A.	0	—	—	0%
Europe	N.A.	N.A.	65	50	↓	(-23%)	3%
Recent Immigration by Continent, 2006-2011							
Recent Immigrants	N.A.	N.A.	20	60	↑	200%	4%
North America (US only)	N.A.	N.A.	N.A.	0	↑	—	0%
Africa	N.A.	N.A.	N.A.	0	—	—	0%
Asia	N.A.	N.A.	N.A.	55	↑	100%	3%
Caribbean	N.A.	N.A.	N.A.	0	—	—	0%
Central and South America	N.A.	N.A.	N.A.	0	—	—	0%
Europe	N.A.	N.A.	15	0	↓	(-100%)	0%

Immigration by Place of Birth	1996	2001	2006	2011	Change From Previous Period	As a % of Neighbourhood
1. India	N.A.	N.A.	N.A.	40		3%
2. United Kingdom	N.A.	N.A.	N.A.	40		3%
N.A.						

Period of Immigration	1996	2001	2006	2011	Change From Previous Period	As a % of Neighbourhood
Before 1971	N.A.	N.A.	25	30	↑ 20%	2%
1971 to 1980	N.A.	N.A.	20	55	↑ 175%	3%
1981 to 1990	N.A.	N.A.	15	25	↑ 67%	2%
1991 to 2000	N.A.	N.A.	20	0	↓ (-100%)	0%
2001 to 2011	N.A.	N.A.	20	120	↑ 500%	8%



Language	1996	2001	2006	2011	Change From Previous Period		As a % of Neighbourhood
Knowledge of Official Languages							
English Only	N.A.	325	290	1,450	↑	400%	91%
French Only	N.A.	0	0	0	—	—	0%
English and French	N.A.	0	50	120	↑	140%	8%
Neither English or French	N.A.	0	0	20	↑	100%	1%
Language Spoken Most Often at Home							
English	N.A.	290	325	1,410	↑	334%	89%
French	N.A.	0	10	5	↓	(-50%)	0%
Non-Official Language	N.A.	0	0	100	↑	100%	6%
Mother Tongue *							
English	N.A.	275	270	1,220	↑	352%	77%
French	N.A.	0	15	20	↑	33%	1%
Non-Official Language	N.A.	40	0	320	↑	100%	20%

* Statistics Canada defines 'mother tongue' as the first language learned in childhood and still understood by the individual at the time of census reporting.

Non-Official Languages Spoken Top 10 Reported	1996	2001	2006	2011	Change From Previous Period	As a % of Neighbourhood
1. Arabic	N.A.	N.A.	N.A.	120	— —	8%
2. Chinese*	N.A.	N.A.	N.A.	55	— —	3%
N.A.	N.A.	N.A.	N.A.	N.A.		
N.A.	N.A.	N.A.	N.A.	N.A.		
N.A.	N.A.	N.A.	N.A.	N.A.		
N.A.	N.A.	N.A.	N.A.	N.A.		
N.A.	N.A.	N.A.	N.A.	N.A.		
N.A.	N.A.	N.A.	N.A.	N.A.		
N.A.	N.A.	N.A.	N.A.	N.A.		
N.A.	N.A.	N.A.	N.A.	N.A.		

* Refers to Cantonese and Mandarin language speakers as well as others who do not specify otherwise.

Religious Identification	1996	2001	2006	2011	Change From Previous Period	As a % of Neighbourhood
Buddhist	N.A.	N.A.	N.A.	0		0%
Christian	N.A.	N.A.	N.A.	875		55%
Anglican	N.A.	N.A.	N.A.	75		5%
Baptist	N.A.	N.A.	N.A.	0		0%
Catholic	N.A.	N.A.	N.A.	485		31%
Orthodox	N.A.	N.A.	N.A.	0		0%
Lutheran	N.A.	N.A.	N.A.	15		1%
Pentecostal	N.A.	N.A.	N.A.	0		0%
Presbyterian	N.A.	N.A.	N.A.	0		0%
United Church	N.A.	N.A.	N.A.	110		7%
Other Christian	N.A.	N.A.	N.A.	155		10%
Hindu	N.A.	N.A.	N.A.	30		2%
Jewish	N.A.	N.A.	N.A.	0		0
Muslim	N.A.	N.A.	N.A.	175		11%
Sikh	N.A.	N.A.	N.A.	0		0
Aboriginal Spirituality	N.A.	N.A.	N.A.	0		0

Notes:

- (1) Source Data –Statistics Canada. 1996-2011 Census Data, Customized Profiles. Ottawa, Canada
- (2) Data also derived from Statistics Canada’s National Household Survey (NHS)
- (3) Customized Community and Neighbourhood Profiles tabulated and compiled by the City of London’s Planning Division –Policy Planning and Research Section.