



Sunningdale Neighbourhood Profile

For further information contact:

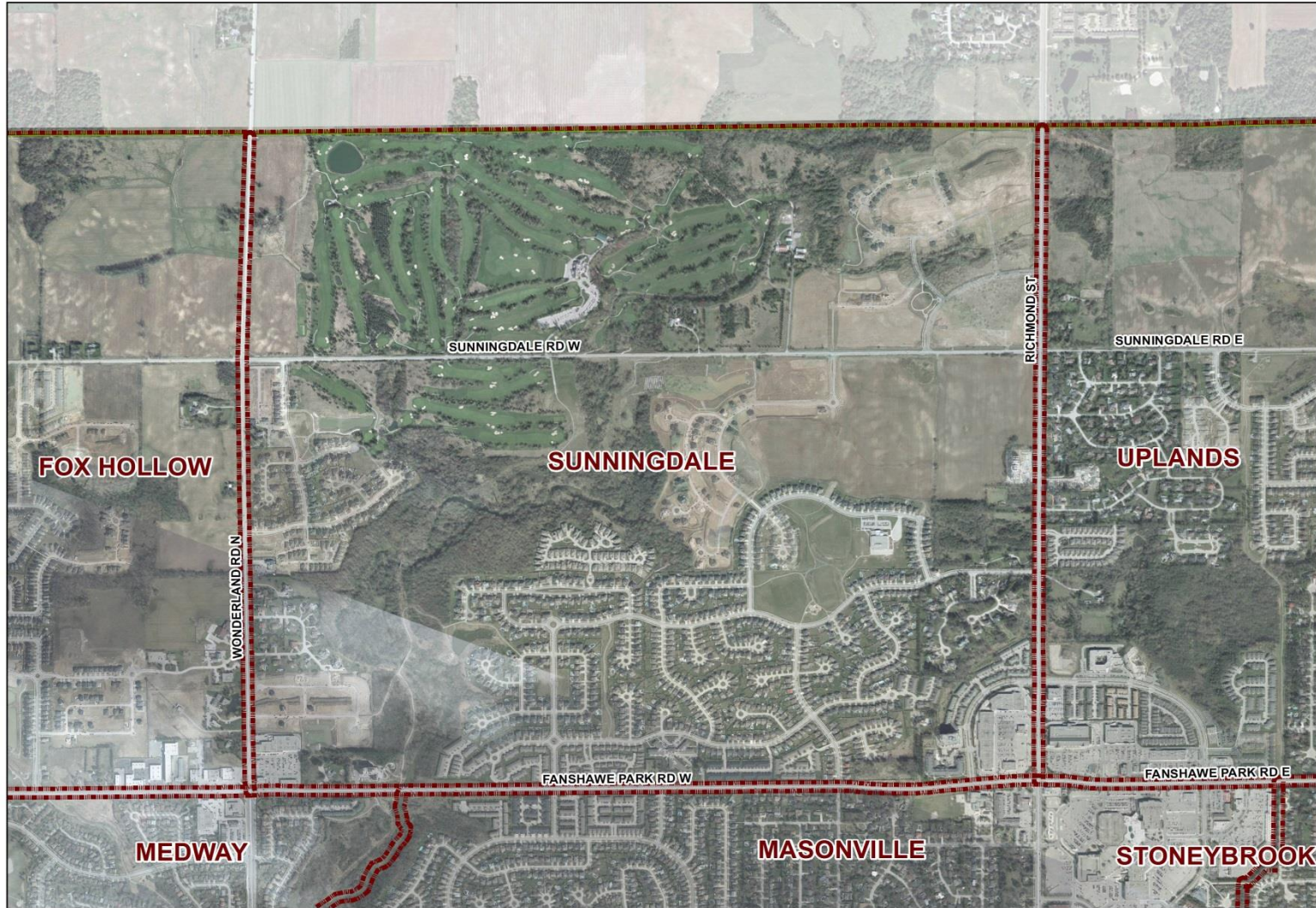
John-Paul Sousa

Planning Research Analyst

Direct: (519) 661-2500 ext. 5989 | email: jpsousa@london.ca

Date Created: Jan. 2014

Neighbourhood Profile -Sunningdale Planning District



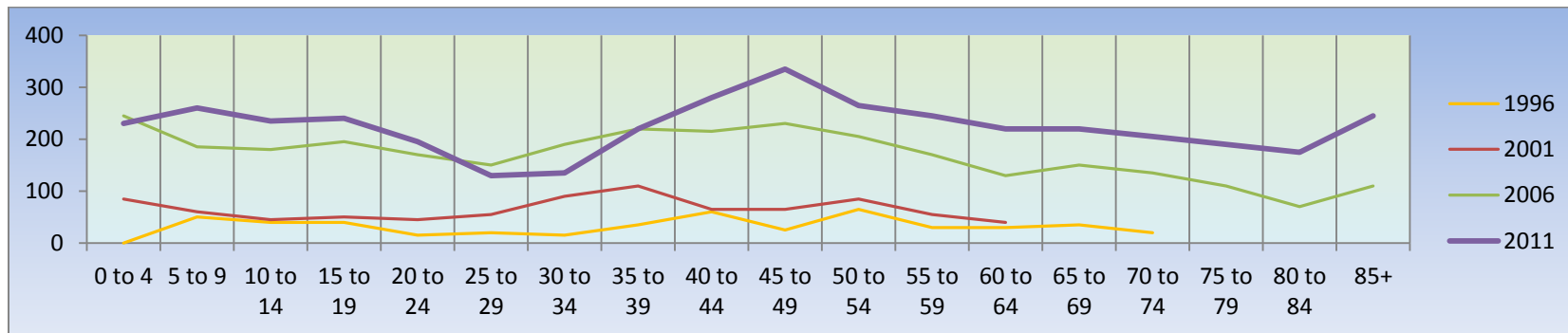
Coordinate System: NAD 1983 UTM Zone 17N
Projection: Transverse Mercator
Datum: North American 1983

Population Characteristics & Age Distribution

Sunningdale Neighbourhood	1996	2001	2006	2011	Change From Previous Period	
Total Population	505	1,075	3,050	4,015	↑	32%
Female	250	550	1,600	2,140	↑	34%
Male	255	525	1,450	1,870	↑	29%

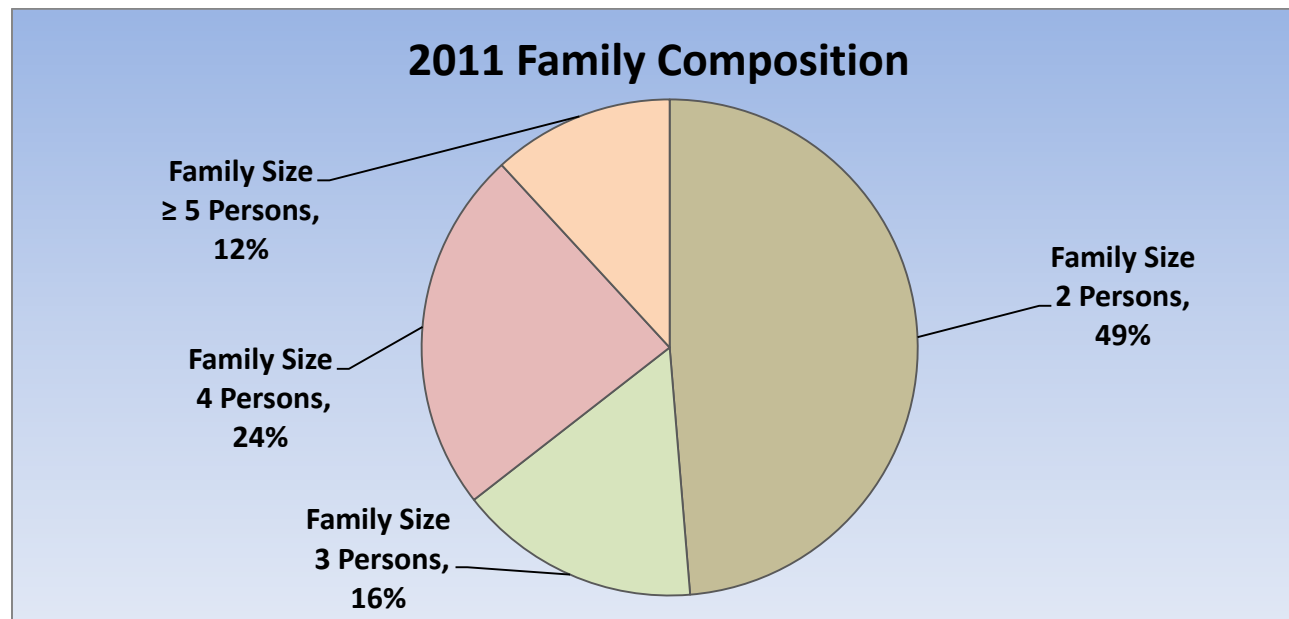
Age Structure	1996	2001	2006	2011	Change From Previous Period		As a % of Neighbourhood
0-19	130	240	805	955	↑	19%	24%
0 to 4	N.A.	N.A.	N.A.	225	↑		6%
5 to 9	N.A.	N.A.	N.A.	260	↑		6%
10 to 14	N.A.	N.A.	N.A.	235	↑		6%
15 to 19	N.A.	N.A.	N.A.	235	↑		6%
20-44	145	365	945	955	↑	1%	24%
45-64	185	245	735	1,055	↑	44%	26%
65+	30	250	575	1,035	↑	80%	26%
Median Age	N.A.	N.A.	N.A.	46.3			

2011 Census Age Cohort Breakout	Male	Female	Total	As a % of Neighbourhood
0 to 4	95	135	230	5.71%
5 to 9	130	130	260	6.46%
10 to 14	140	95	235	5.84%
15 to 19	120	120	240	5.96%
20 to 24	95	100	195	4.84%
25 to 29	60	70	130	3.23%
30 to 34	55	80	135	3.35%
35 to 39	100	120	220	5.47%
40 to 44	130	150	280	6.96%
45 to 49	165	170	335	8.32%
50 to 54	125	140	265	6.58%
55 to 59	115	130	245	6.09%
60 to 64	105	115	220	5.47%
65 to 69	105	115	220	5.47%
70 to 74	95	110	205	5.09%
75 to 79	90	100	190	4.72%
80 to 84	75	100	175	4.35%
85+	75	170	245	6.09%
Total	1,875	2,150	4,025	



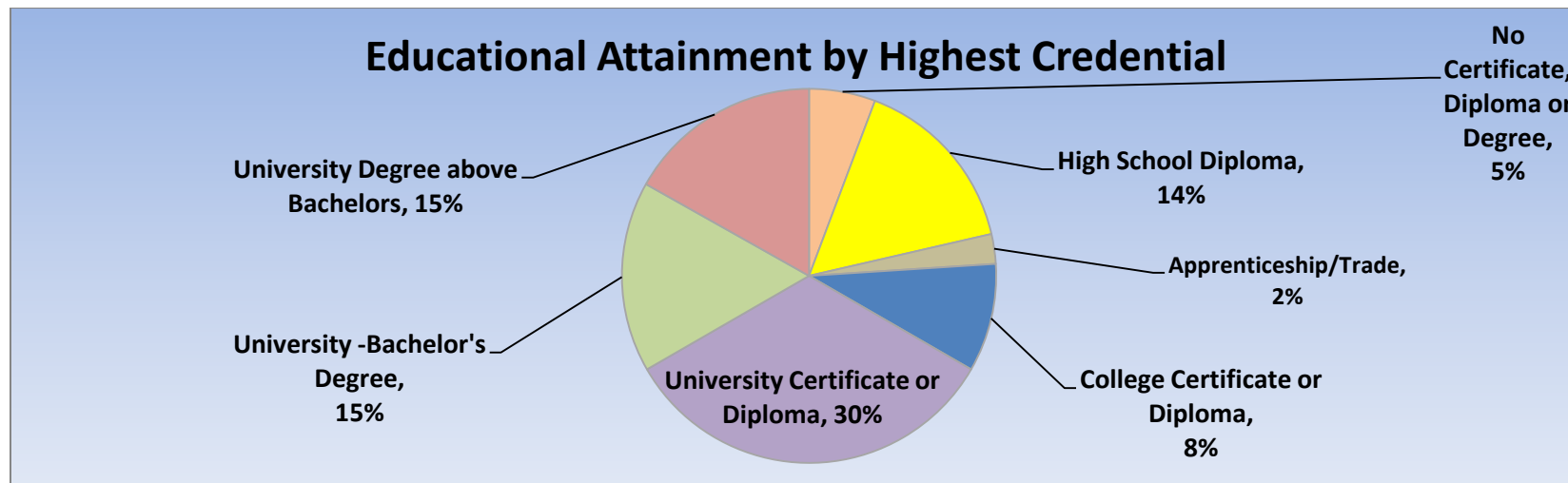
Marital Status	1996	2001	2006	2011	Change From Previous Period		As a % of Neighbourhood
Single	100	170	510	615	↑	21%	15%
Married	275	600	1,625	2,090	↑	29%	52%
Common-Law	20	15	85	95	↑	12%	2%
Divorced	15	15	85	110	↑	29%	3%
Separated	20	10	35	50	↑	43%	1%
Widowed	0	100	195	335	↑	72%	8%
Citizenship, Immigration & Ethnic Identity	1996	2001	2006	2011	Change From Previous Period		As a % of Neighbourhood
Citizenship							
Canadian Citizens	490	1,005	2,895	3,315	↑	15%	83%
Non-Canadian Citizens	20	70	150	260	↑	73%	6%
Immigration Status							
Canadian Born Population	435	790	2,200	2,610	↑	19%	65%
Foreign Born Population	75	290	775	1,045	↑	35%	26%
Visible Minority Population	25	195	630	890	↑	41%	22%
Aboriginal Identity Population	0	0	0	15	↑	100%	<1%

Family Composition	1996	2001	2006	2011	Change From Previous Period	As a % of Neighbourhood
Number of Census Families	155	305	920	1,130	↑ 23%	
Family Size - 2 Persons	75	140	450	555	↑ 23%	49%
Family Size - 3 Persons	30	70	160	180	↑ 13%	16%
Family Size - 4 Persons	35	80	210	270	↑ 29%	24%
Family Size - ≥ 5 Persons	15	20	95	135	↑ 42%	12%
Census Family - Average Size	3.00	3.00	3.00	3.00		



Family Structure & Number of Children	1996	2001	2006	2011	Change From Previous Period
Married Couples	140	300	790	1,000	↑
Without Children	60	130	350	470	↑
With Children	75	170	440	530	↑
Common-Law	10	N.A.	40	45	↑
Without Children	10	N.A.	35	35	–
With Children	0	N.A.	5	10	↑
Lone Parent Families	15	N.A.	85	85	↑
Female Headed	N.A.	N.A.	70	70	–
1 Child	N.A.	N.A.	35	35	–
2 Children	N.A.	N.A.	30	25	↓
≥ 3 Children	N.A.	N.A.	N.A.	10	↑
Male Headed	N.A.	N.A.	N.A.	15	↑
1 Child	N.A.	N.A.	N.A.	10	↑
2 Children	N.A.	N.A.	N.A.	5	↑
≥ 3 Children	N.A.	N.A.	N.A.	0	

Educational Attainment by Credential	1996	2001	2006	2011	Change From Previous Period	As a % of Neighbourhood
No Certificate, Diploma or Degree	N.A.	N.A.	215	245	↑	5%
High School Diploma or Equivalent	N.A.	N.A.	510	670	↑	14%
Apprenticeship, or Trade Certificate	N.A.	N.A.	100	110	↑	2%
College Certificate or Diploma	N.A.	N.A.	360	400	↑	8%
University Certificate or Diploma	N.A.	N.A.	N.A.	1,425	↑	30%
University -Bachelor's Degree	N.A.	N.A.	465	705	↑	15%
University Degree above bachelor level (M.A. or PhD)	N.A.	N.A.	205	720	↑	15%

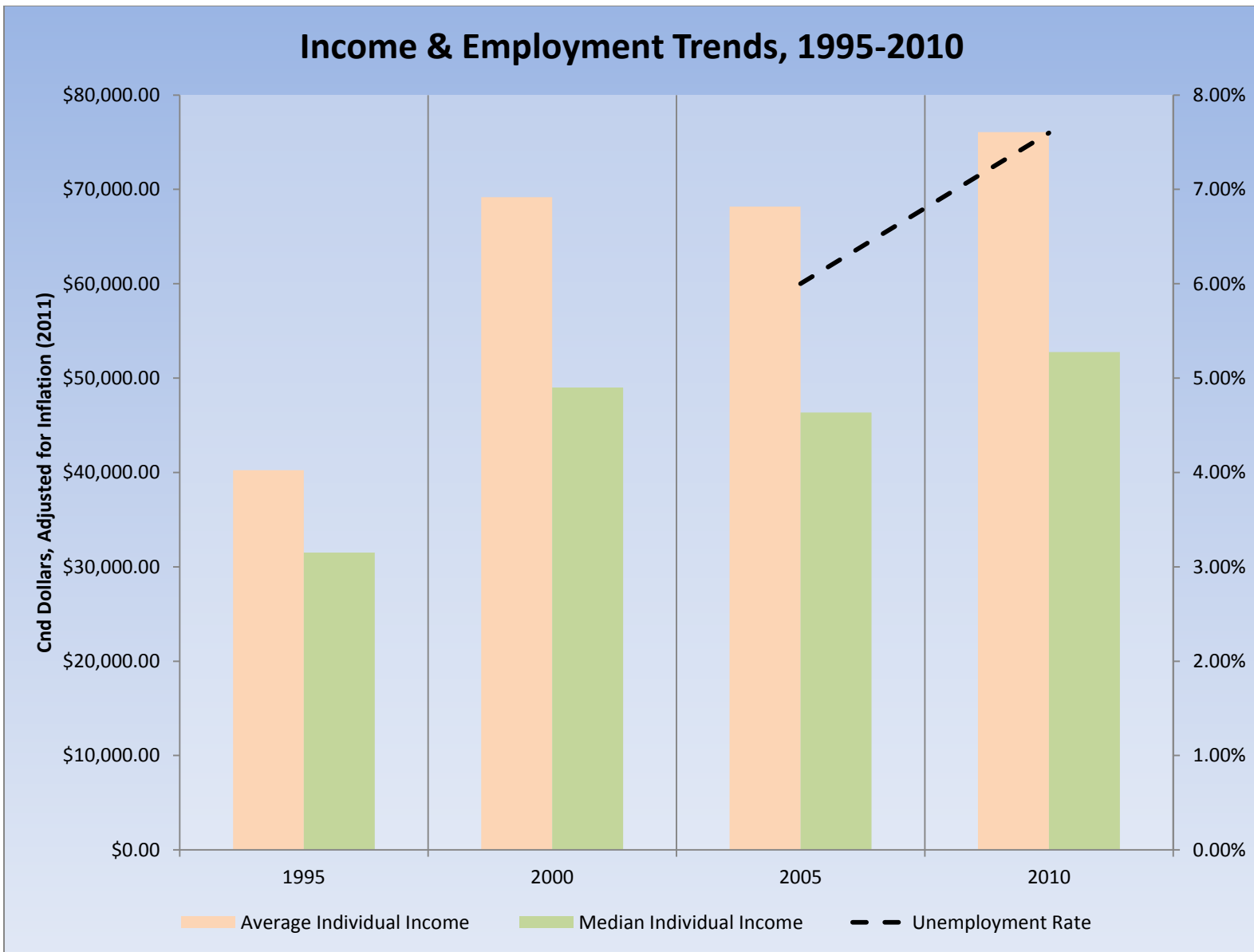


Housing by Structure Type & Tenure	1996	2001	2006	2011	Change From Previous Period	As a % of Neighbourhood
Total Occupied Dwellings	185	455	1,150	1,400	22%	
Single-Detached	165	255	680	935	38%	67%
Semi-Detached	0	0	0	0		0%
Row House	15	105	250	225	(-10%)	16%
Duplex	0	0	10	0	(-100%)	0%
Apartment < 5 Storeys	0	15	15	0	(-100%)	0%
Apartment ≥ 5 Storeys	0	85	110	240	118%	17%
Number of Owned Dwellings	150	365	945	1,110	17%	
Owned as a % of Total	81%	79%	82%	80%		
Number of Rented Dwellings	35	21%	210	280	33%	
Rented as a % of Total	19%	21%	18%	20%		
Average # of Rooms	8.65	6.50	7.30	7.5		
Average # of Bedrooms	3.40	2.70	3.00	N.A.		
Average Gross Rent	\$623.00	\$1,946.00	\$1,535.00	\$1,789.00	17%	
Average Value of Dwelling	\$233,928.00	\$268,983.00	\$407,208.00	\$476,329.00	17%	

Labour Market Indicators	1996	2001	2006	2011	Change From Previous Period	As a % of Neighbourhood
Total Labour Force ≥ 15 years	285	530	1,455	1,705	↑ 17%	
Female	125	250	640	795	↑ 24%	47%
Male	160	280	815	910	↑ 12%	53%
Unemployment Rate	8.60%	N.A.	6.00%	7.60%	↑	
Female	N.A.	N.A.	N.A.	8.20%		
Male	N.A.	N.A.	N.A.	7.10%		
Employment Rate	N.A.	N.A.	N.A.	52.20%		
Participation Rate	70%	59%	62%	56.50%	↓	
Female	63%	52%	53%	51.10%	↓	
Male	73%	68%	72%	62.30%	↓	
Labour Force by Sector						
Primary (Agriculture & Resources)	35	0	10	0	↓	0%
Secondary (Construction & Manufacturing)	50	120	150	80	↓	5%
Tertiary Services	180	450	765	1,565	↑	95%

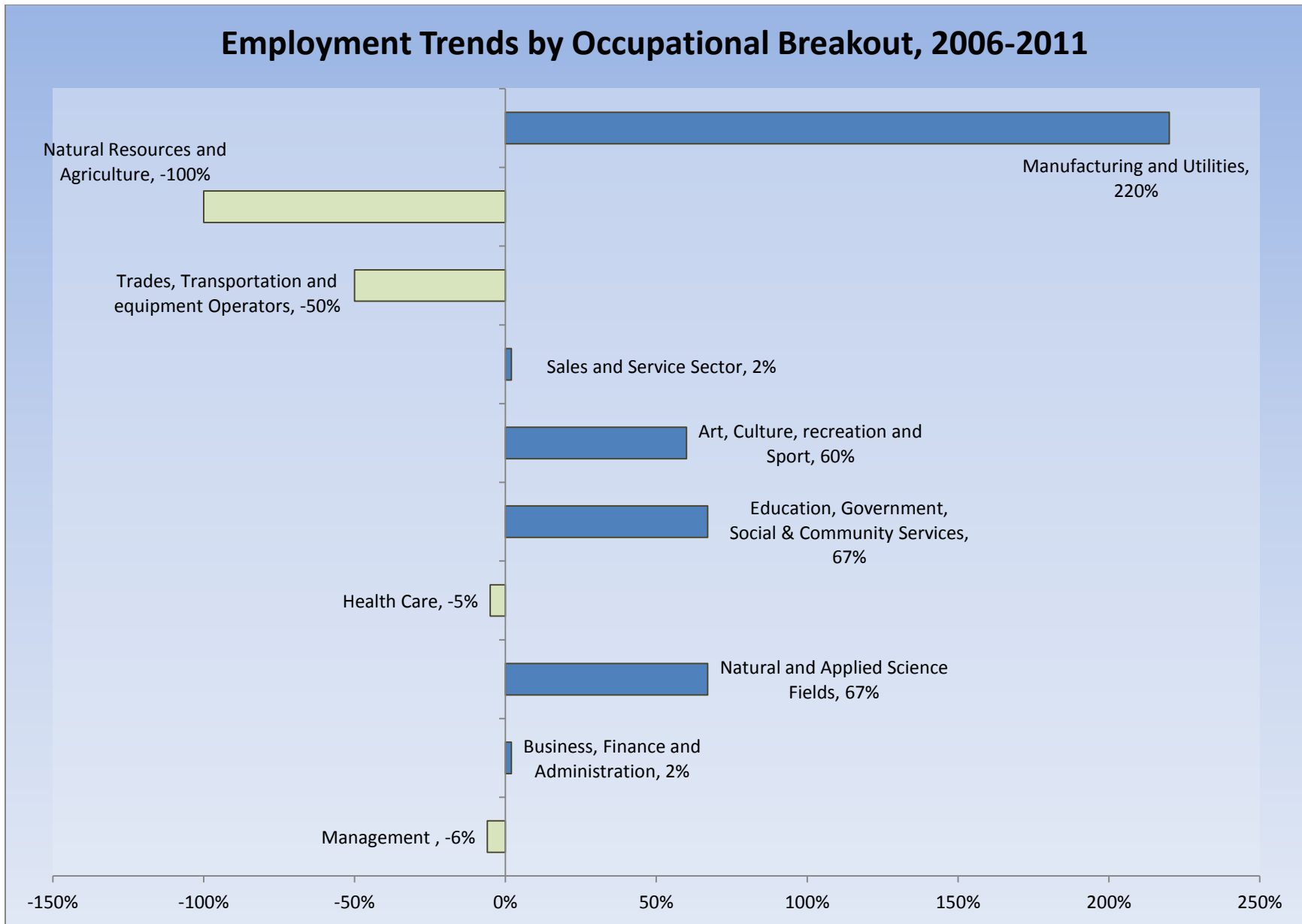
Income Characteristics of Economically Active Population	1996	2001	2006	2011	Change From Previous Period	
Individual Income						
Average Income	\$29,479.00	\$55,226.00	\$60,842.00	\$74,041.00	↑	22%
Median Income	\$23,074.00	\$39,126.00	\$41,378.00	\$51,362.00	↑	24%
Income by Gender						
Average Income – Male	\$36,381.00	\$75,659.00	\$79,846.00	\$100,424.00	↑	26%
Average Income - Female	\$22,577.00	\$34,793.00	\$43,665.00	\$49,744.00	↑	14%
Median Income – Male	\$22,326.00	\$49,936.00	\$57,143.00	\$67,249.00	↑	18%
Median Income - Female	\$23,822.00	\$28,316.00	\$31,477.00	\$38,479.00	↑	22%
Household Income						
Average Household Income	\$62,259.00	\$100,025.00	\$123,098.00	\$153,013.00	↑	24%
Median Household Income	\$52,926.00	\$87,738.00	\$98,838.00	\$117,850.00	↑	19%
Family Income						
Average Family Income	\$68,926.00	\$120,194.00	\$142,651.00	\$159,112.00	↑	12%
Median Family Income	\$52,926.00	\$87,738.00	\$113,885.00	\$132,603.00	↑	16%
Lone-Parent Families						
Average Family Income	N.A.	N.A.	N.A.	\$78,062.00		
Median Family Income	N.A.	N.A.	N.A.	\$73,833.00		

Data Note: Income figures based on previous reporting year (1995, 2000, 2005 & 2010).



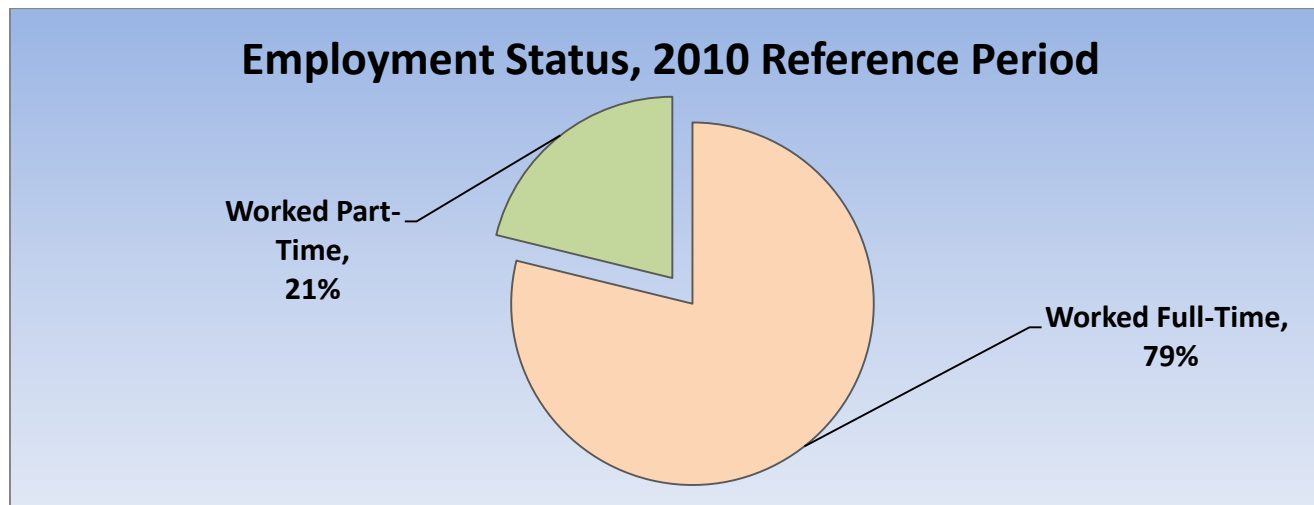
Labour Force by National Occupational Classification	1996	2001	2006	2011	Change From Previous Period	As a % of Labour Force
Management	10	145	245	230	↓ (-6%)	14%
Business, Finance and Administration	45	110	275	280	↑ 2%	17%
Natural and Applied Science Fields	0	30	75	125	↑ 67%	7%
Health Care	20	65	220	210	↓ (-5%)	12%
Education, Government, Social & Community Services	25	65	240	400	↑ 67%	24%
Art, Culture, recreation and Sport	0	65	25	40	↑ 60%	2%
Sales and Service Sector	50	20	275	280	↑ 2%	17%
Trades, Transport and Equipment Operators	35	10	100	50	↓ (-50%)	3%
Natural Resources and Agriculture	40	10	15	0	↓ (-100%)	0%
Manufacturing and Utilities	30	10	25	80	↑ 220%	5%

Employment Trends by Occupational Breakout, 2006-2011



Class of Worker	1996	2001	2006	2011	Change From Previous Period	As a % Neighbourhood
Employee	190	405	1,175	1,395	↑ 19%	92%
Female	105	200	610	700		
Male	85	205	565	695		
Self-Employed	85	125	310	265	↓ (-15%)	8%
Female	20	55	70	70		
Male	65	70	240	195		

Employment Status	1996	2001	2006	2011	Change From Previous Period	As a % of Active Labour Force
Worked Full-Time in 2010	N.A.	N.A.	N.A.	1,265	N.A.	79%
Worked Part-Time in 2010	N.A.	N.A.	N.A.	3,40	N.A.	21%



Mode of Transport to Work	1996	2001	2006	2011	Change From Previous Period	As a % of Neighbourhood
Automobile -As a Driver	170	415	1,065	1,220	↑	86%
Car-Pool	15	55	105	80	↓	6%
Public Transportation	10	0	0	50	↑	4%
Walked or Bicycled	35	0	65	40	↓	3%
Other Modes	0	0	15	30	↑	2%
Median Commuting Duration	N.A.	N.A.	N.A.	20.1 min		

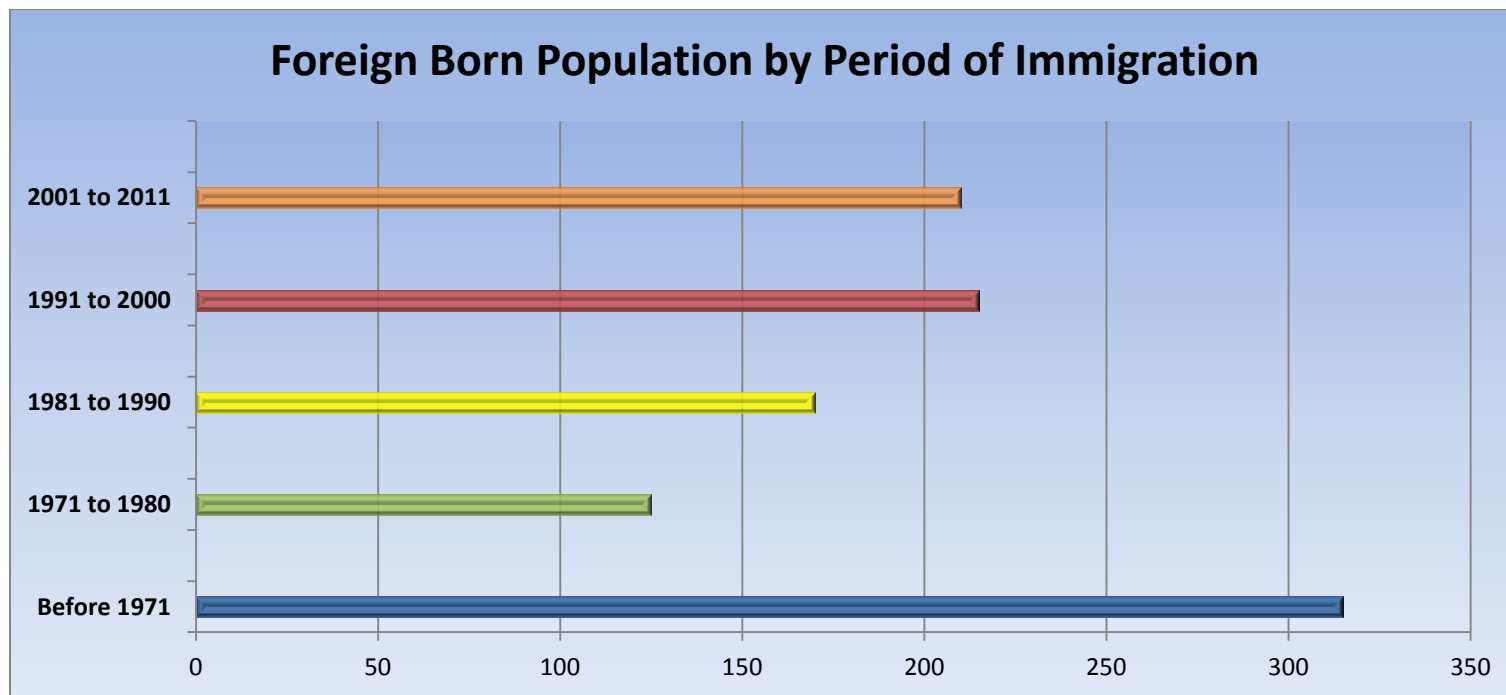
Place of Work	1996	2001	2006	2011	Change From Previous Period	As a % of Neighbourhood
Worked at Home	40	60	150	140	↓	9%
Worked at a Fixed Address	195	440	1,115	1,310	↑	84%
No Fixed Workplace Address	20	30	95	110	↑	7%
Worked within Municipality	175	425	1,050	N.A.		
Work in a different Municipality	15	20	130	N.A.		
Worked outside Canada	0	0	0	0	—	

Mobility/Migration Status	1996	2001	2006	2011	Change From Previous Period	As a % of Neighbourhood
Lived at the same address 5 years ago	350	160	850	2,050	↑	58%
Moved sometime with the last 5 years	150	840	1,960	1,505	↓	42%
Internal Migrants	45	205	530	385	↓	71%
- Intra-provincial	45	150	480	330	↓	
- Inter-provincial	0	55	50	55	↑	
External Migrants	0	30	200	160	↓	29%
Lived at the same address 1 years ago	435	720	2,395	3,420	↑	91%
Moved sometime with the last year	75	350	600	335	↓	9%
Internal Migrants	45	75	150	60	↓	55%
- Intra-provincial	45	75	145	35	↓	
- Inter-provincial	0	0	10	30	↓	
External Migrants	0	20	50	50	—	45%

Place of Birth	1996	2001	2006	2011	Change From Previous Period	As a % of Neighbourhood
Total Immigrant Population	N.A.	N.A.	775	1,045	↑	22%
Place of Birth by Continent						
North America (US only)	N.A.	N.A.	20	45	↑	1%
Africa	N.A.	N.A.	10	30	↑	1%
Asia	N.A.	N.A.	330	480	↑	10%
Caribbean	N.A.	N.A.	55	0	↓	0%
Central and South America	N.A.	N.A.	20	0	↓	0%
Europe	N.A.	N.A.	345	465	↑	10%
Recent Immigration by Continent, 2006-2011						
Recent Immigrants	N.A.	N.A.	60	105	↑	2%
North America (US only)	N.A.	N.A.	0	0	—	0%
Africa	N.A.	N.A.	0	0	↓	0%
Asia	N.A.	N.A.	40	80	↓	2%
Caribbean	N.A.	N.A.	0	0	—	0%
Central and South America	N.A.	N.A.	0	0	—	0%
Europe	N.A.	N.A.	20	0	↓	0%

Immigration by Place of Birth	1996	2001	2006	2011	Change From Previous Period	As a % of Neighbourhood
1. India	N.A.	N.A.	N.A.	145		4%
2. South Korea	N.A.	N.A.	N.A.	95		2%
3. China	N.A.	N.A.	N.A.	75		2%
N.A.						

Period of Immigration	1996	2001	2006	2011	Change From Previous Period	As a % of Neighbourhood
Before 1971	N.A.	N.A.	230	315	↑	8%
1971 to 1980	N.A.	N.A.	130	125	↓	3%
1981 to 1990	N.A.	N.A.	135	170	↑	4%
1991 to 2000	N.A.	N.A.	220	215	↓	5%
2001 to 2011	N.A.	N.A.	N.A.	210		5%



Language	1996	2001	2006	2011	Change From Previous Period	As a % of Neighbourhood
Knowledge of Official Languages						
English Only	430	1,020	2,795	3,500	↑	87%
French Only	0	0	0	0	–	0%
English and French	80	55	220	320	↑	8%
Neither English or French	10	10	35	35	–	1%
Language Spoken Most Often at Home						
English	470	860	2,695	3,265	↑	81%
French	0	15	10	15	↑	<1%
Non-Official Language	35	55	340	425	↑	11%
Mother Tongue *						
English	390	820	2,200	2,760	↑	69%
French	10	20	35	50	↑	1%
Non-Official Language	85	205	780	985	↑	25%

* Statistics Canada defines 'mother tongue' as the first language learned in childhood and still understood by the individual at the time of census reporting.

Non-Official Languages Spoken Top 10 Reported	1996	2001	2006	2011	Change From Previous Period	As a % of Neighbourhood
1. Chinese*	N.A.	N.A.	N.A.	135		3%
2. Korean	N.A.	N.A.	N.A.	120		3%
3. Italian	N.A.	N.A.	N.A.	110		3%
4. Spanish	N.A.	N.A.	N.A.	110		3%
5. Hindi	N.A.	N.A.	N.A.	85		3%
6. Gujarati	N.A.	N.A.	N.A.	85		2%
7. Croatian	N.A.	N.A.	N.A.	70		2%
8. Greek	N.A.	N.A.	N.A.	70		2%
9. Malayalam	N.A.	N.A.	N.A.	65		2%
10. German	N.A.	N.A.	N.A.	55		1%

* Refers to Cantonese and Mandarin language speakers as well as others who do not specify otherwise.

Religious Identification	1996	2001	2006	2011	Change From Previous Period	As a % of Neighbourhood
Buddhist	N.A.	N.A.	N.A.	0		0%
Christian	N.A.	N.A.	N.A.	2,465		61%
Anglican	N.A.	N.A.	N.A.	285		7%
Baptist	N.A.	N.A.	N.A.	50		1%
Catholic	N.A.	N.A.	N.A.	1,165		29%
Orthodox	N.A.	N.A.	N.A.	155		4%
Lutheran	N.A.	N.A.	N.A.	70		2%
Pentecostal	N.A.	N.A.	N.A.	0		0%
Presbyterian	N.A.	N.A.	N.A.	95		2%
United Church	N.A.	N.A.	N.A.	355		9%
Other Christian	N.A.	N.A.	N.A.	145		4%
Hindu	N.A.	N.A.	N.A.	145		4%
Jewish	N.A.	N.A.	N.A.	25		1%
Muslim	N.A.	N.A.	N.A.	210		5%
Sikh	N.A.	N.A.	N.A.	20		<1%
Aboriginal Spirituality	N.A.	N.A.	N.A.	0		0%

Notes:

- (1) Source Data –Statistics Canada. 1996-2011 Census Data, Customized Profiles. Ottawa, Canada
- (2) Data also derived from Statistics Canada’s National Household Survey (NHS)
- (3) Customized Community and Neighbourhood Profiles tabulated and compiled by the City of London’s Planning Division –Policy Planning and Research Section.