



South London Neighbourhood Profile

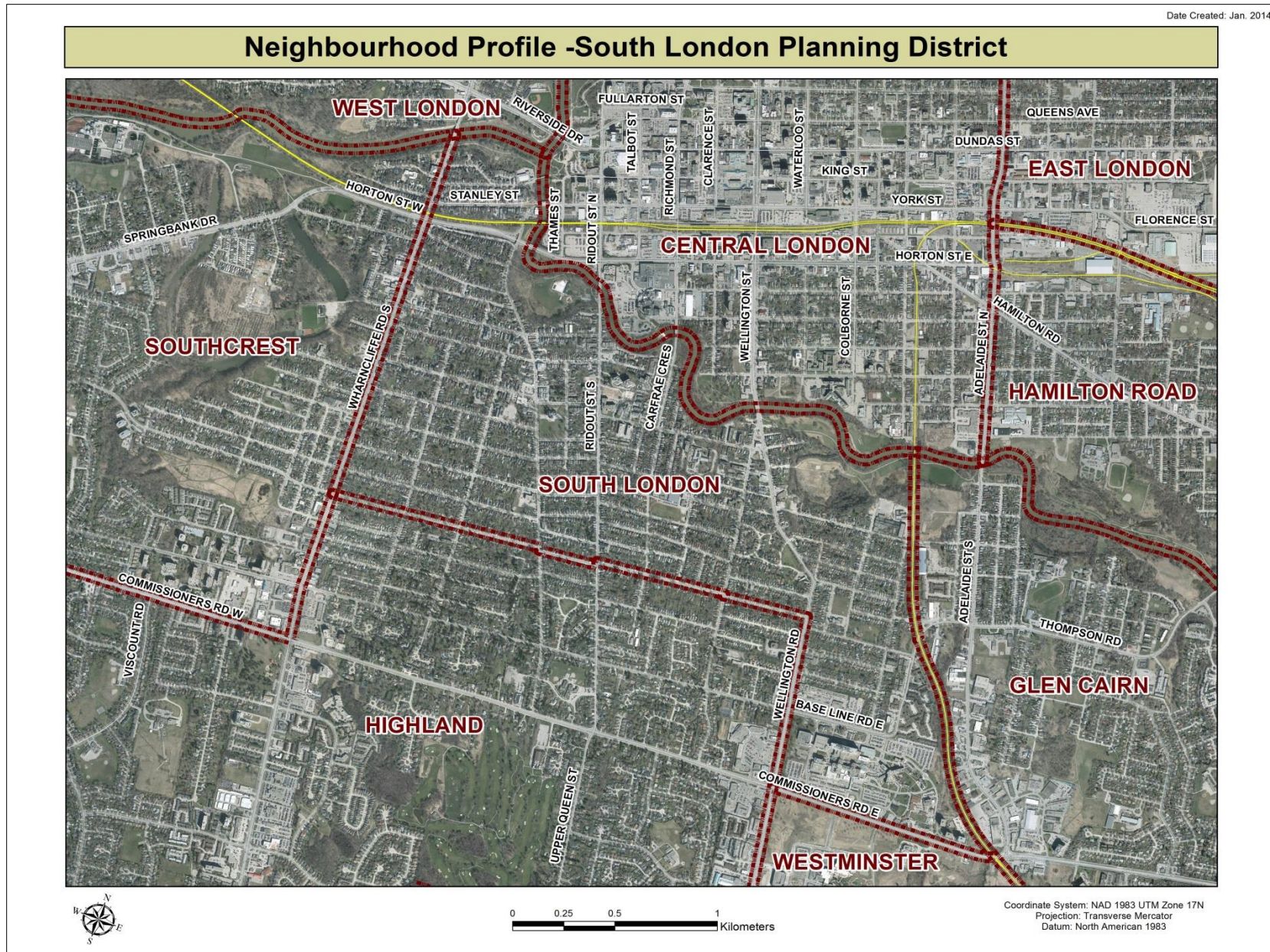
For further information contact:

John-Paul Sousa

Planning Research Analyst

Direct: (519) 661-2500 ext. 5989 | email: jpsousa@london.ca

Date Created: Jan. 2014

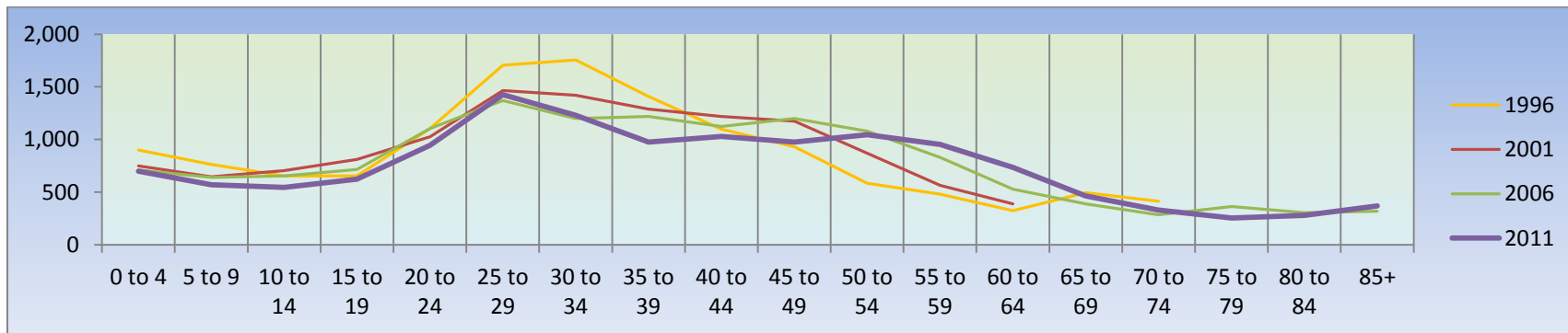


Population Characteristics & Age Distribution

South London Neighbourhood	1996	2001	2006	2011	Change From Previous Period	
Total Population	14,190	13,940	14,055	13,470	↓	(-4%)
Female	7,565	7,325	7,445	7,145	↓	(-4%)
Male	6,630	6,610	6,615	6,325	↓	(-4%)

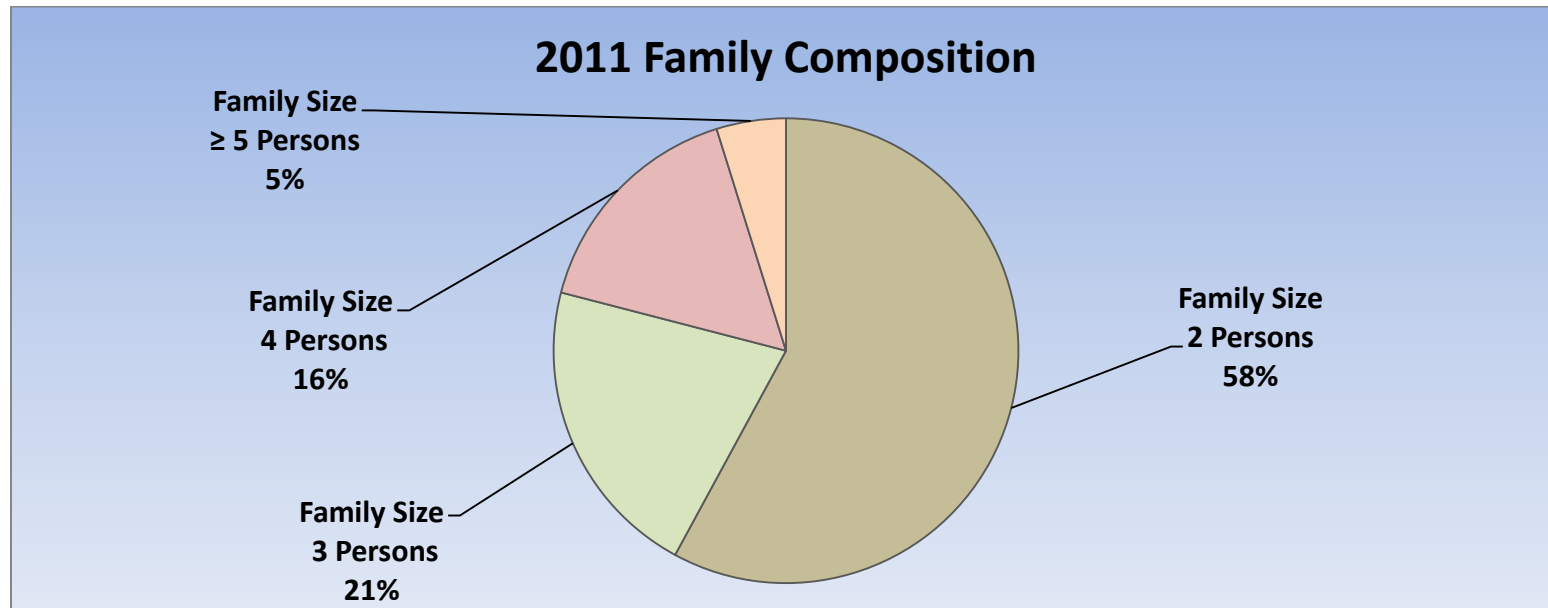
Age Structure	1996	2001	2006	2011	Change From Previous Period		As a % of Neighbourhood
0-19	2,865	2,970	2,720	2,445	↓	(-10%)	18%
0 to 4	900	750	710	700	↓	(-1%)	5%
5 to 9	655	705	640	570	↓	(-11%)	4%
10 to 14	655	705	655	550	↓	(-16%)	4%
15 to 19	655	810	715	625	↓	(-13%)	5%
20-44	7,075	6,420	6,020	5,605	↓	(-7%)	42%
45-64	2,320	3,000	3,640	3,715	↑	2%	28%
65+	1,770	1,610	1,665	1,700	↑	2%	13%
Median Age	N.A.	N.A.	N.A.	38.5			

2011 Census Age Cohort Breakout	Male	Female	Total	As a % of Neighbourhood
0 to 4	355	345	700	5.20%
5 to 9	285	285	570	5.20%
10 to 14	275	270	545	4.05%
15 to 19	335	290	625	4.65%
20 to 24	410	535	945	7.02%
25 to 29	635	790	1,425	10.59%
30 to 34	620	610	1,230	9.14%
35 to 39	480	495	975	7.25%
40 to 44	520	510	1,030	7.66%
45 to 49	465	510	975	7.25%
50 to 54	495	550	1,045	7.77%
55 to 59	440	515	955	7.10%
60 to 64	355	380	735	5.46%
65 to 69	205	260	465	3.46%
70 to 74	145	185	330	2.45%
75 to 79	95	160	255	1.90%
80 to 84	105	175	280	2.08%
85+	85	285	370	2.75%
Total	6,305	7,150	13,455	



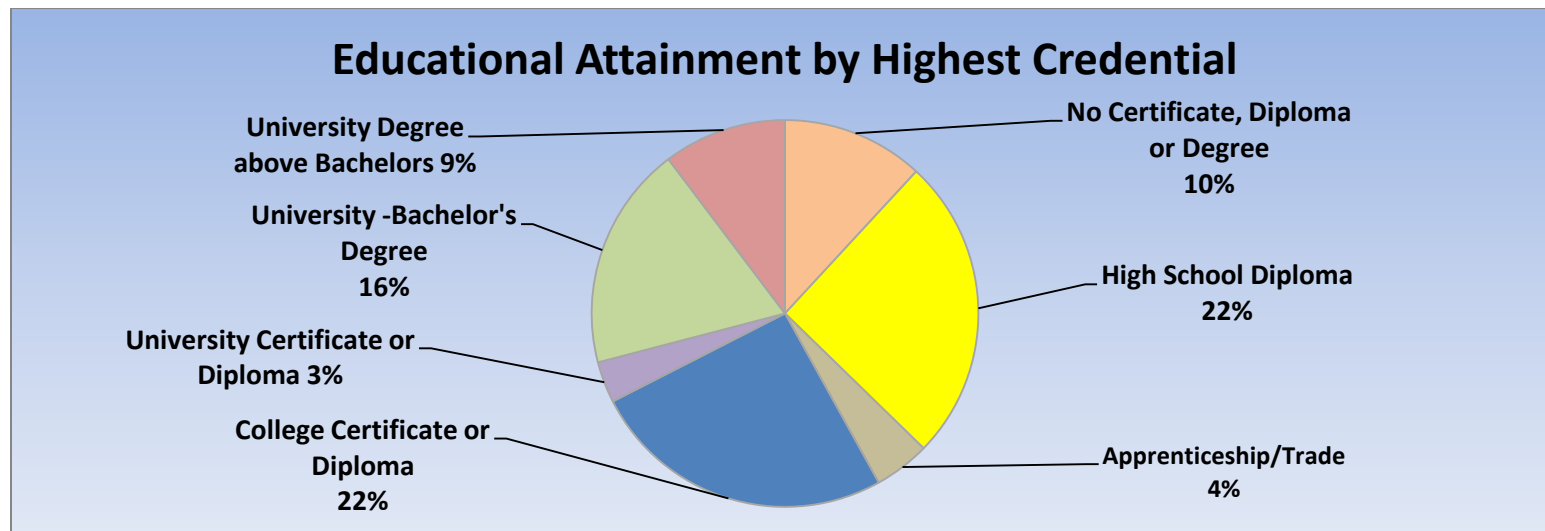
Marital Status	1996	2001	2006	2011	Change From Previous Period	As a % of Neighbourhood
Single	4,755	5,035	5,130	4,075	↓ (-21%)	30%
Married	4,595	4,375	4,240	3,905	↓ (-8%)	39%
Common-Law	1,110	1,300	1,470	1,390	↓ (-5%)	10%
Divorced	1,165	1,205	1,280	1,070	↓ (-16%)	8%
Separated	590	615	645	525	↓ (-19%)	4%
Widowed	1,165	615	745	680	↓ (-9%)	5%
Citizenship, Immigration & Ethnic Identity	1996	2001	2006	2011	Change From Previous Period	As a % of Neighbourhood
Citizenship						
Canadian Citizens	13,565	13,460	13,525	12,940	↓ (-4%)	96%
Non-Canadian Citizens	630	485	525	390	↓ (-26%)	3%
Immigration Status						
Canadian Born Population	11,825	11,990	12,125	11,615	↓ (-4%)	86%
Foreign Born Population	2,305	1,865	1,825	1,640	↓ (-10%)	12%
Visible Minority Population	650	525	860	835	↓ (-3%)	6%
Aboriginal Identity Population	175	150	230	570	↑ 148%	4%

Family Composition	1996	2001	2006	2011	Change From Previous Period	As a % of Neighbourhood
Number of Census Families	3,430	3,535	3,575	3,320	↓ (-7%)	
Family Size - 2 Persons	1,890	1,965	2,040	1,920	↓ (-6%)	58%
Family Size - 3 Persons	695	770	740	700	↓ (-5%)	21%
Family Size - 4 Persons	600	550	600	535	↓ (-11%)	16%
Family Size - ≥ 5 Persons	245	255	200	160	↓ (-20%)	5%
Census Family - Average Size	3	3	3	2.7	↓	



Family Structure & Number of Children	1996	2001	2006	2011	Change From Previous Period	
Married Couples	2,285	2,145	2,095	1,915	↓	(-9%)
Without Children	1,085	1,040	1,035	945	↓	(-9%)
With Children	1,200	1,105	1,055	965	↓	(-9%)
Common-Law	510	650	735	700	↓	(-5%)
Without Children	390	465	540	505	↓	(-6%)
With Children	120	185	200	190	↓	(-5%)
Lone Parent Families	635	740	745	710	↓	(-5%)
Female Headed	560	660	640	580	↓	(-9)
1 Child	360	410	410	390	↓	(-5%)
2 Children	180	195	185	140	↓	(-24%)
≥ 3 Children	20	65	50	50	—	—
Male Headed	80	80	105	130	↑	24%
1 Child	60	45	55	80	↑	45%
2 Children	10	30	40	35	↓	(-12.5)
≥ 3 Children	0	0	10	10	—	—

Educational Attainment by Credential	1996	2001	2006	2011	Change From Previous Period	As a % of Neighbourhood
No Certificate, Diploma or Degree	N.A.	N.A.	1,985	1,360	↓ (-31%)	10%
High School Diploma or Equivalent	N.A.	N.A.	3,200	2,910	↓ (-9%)	22%
Apprenticeship, or Trade Certificate	365	1,015	800	535	↓ (33%)	4%
College Certificate or Diploma	N.A.	N.A.	2,675	2,925	↑ 9%	22%
University Certificate or Diploma	N.A.	N.A.	N.A.	395	— —	3%
University -Bachelor's Degree	N.A.	N.A.	1,705	2,150	↑ 26%	16%
University Degree above bachelor level (M.A. or PhD)	N.A.	N.A.	740	1,180	↑ 59%	9%

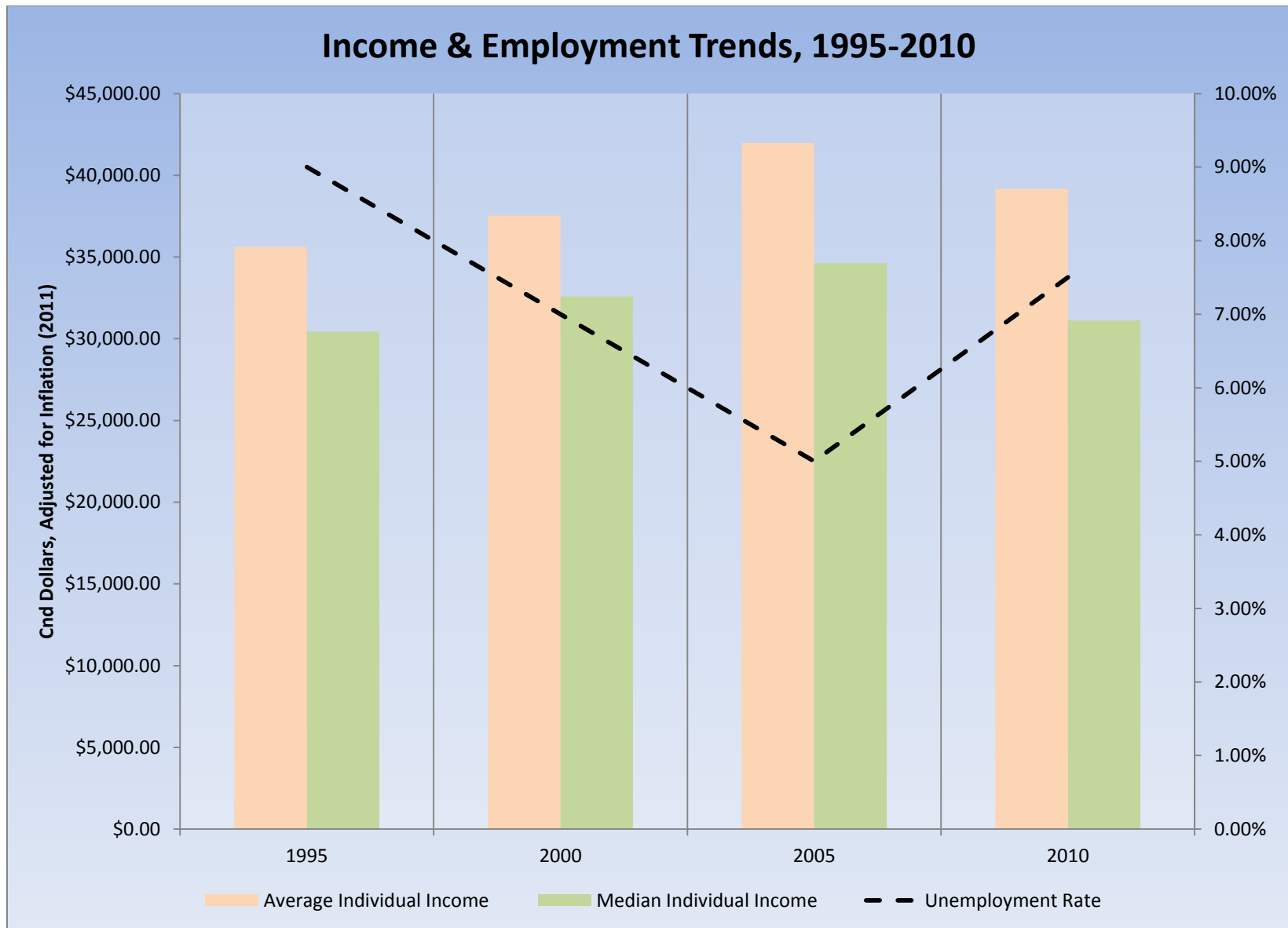


Housing by Structure Type & Tenure	1996	2001	2006	2011	Change From Previous Period	As a % of Neighbourhood
Total Occupied Dwellings	7,075	7,070	7,185	6,930	↓ (-4%)	
Single-Detached	2,810	2,820	2,815	2,830	↑ <1%	41%
Semi-Detached	175	115	140	125	↓ (-11%)	2%
Row House	270	295	275	270	↓ (-2%)	4%
Duplex	710	540	590	485	↓ (-18%)	7%
Apartment < 5 Storeys	1,870	2,005	2,135	2,005	↓ (-6%)	29%
Apartment ≥ 5 Storeys	1,205	1,265	1,205	1,200	↓ (-<1%)	17%
Number of Owned Dwellings	3,080	3,170	3,360	3,370	↑ <1%	
Owned as a % of Total	44%	45%	47%	47%	— —	
Number of Rented Dwellings	4,000	3,905	3,825	3,735	↓ (-2%)	
Rented as a % of Total	56%	55%	53%	54%	↑ 1%	
Average # of Rooms	6	6	6	5.7	↓	
Average # of Bedrooms	2	2	2	N.A.		
Average Gross Rent	\$616.00	\$609.00	\$741.00	\$763.00	↑ 3%	
Average Value of Dwelling	\$141,520.00	\$139,874.00	\$194,995.00	\$229,465.00	↑ 18%	

Labour Market Indicators	1996	2001	2006	2011	Change From Previous Period	As a % of Work Force
Total Labour Force ≥ 15 years	8,555	8,465	8,215	8,240	↑ <1%	
Female	4,245	4,305	4,030	4,185	↑ 4%	51%
Male	4,310	4,160	4,185	4,060	↓ (-3%)	49%
Unemployment Rate	9%	7%	5%	7.50%	↑	
Female	8%	7%	5%	6.60%	↑	
Male	10%	6%	6%	8.40%	↑	
Employment Rate	N.A.	N.A.	N.A.	66.60%		
Participation Rate	72%	72%	70%	72.00%	↑	
Female	66%	68%	66%	70.90%	↑	
Male	79%	76%	75%	73.20%		
Labour Force by Sector						
Primary (Agriculture & Resources)	25	35	25	65	↑ 160%	<1%
Secondary (Construction & Manufacturing)	1,460	1,315	1,245	920	↓ (-26%)	11%
Tertiary Services	6,815	7,050	7,160	7,020	↓ (-2%)	85%

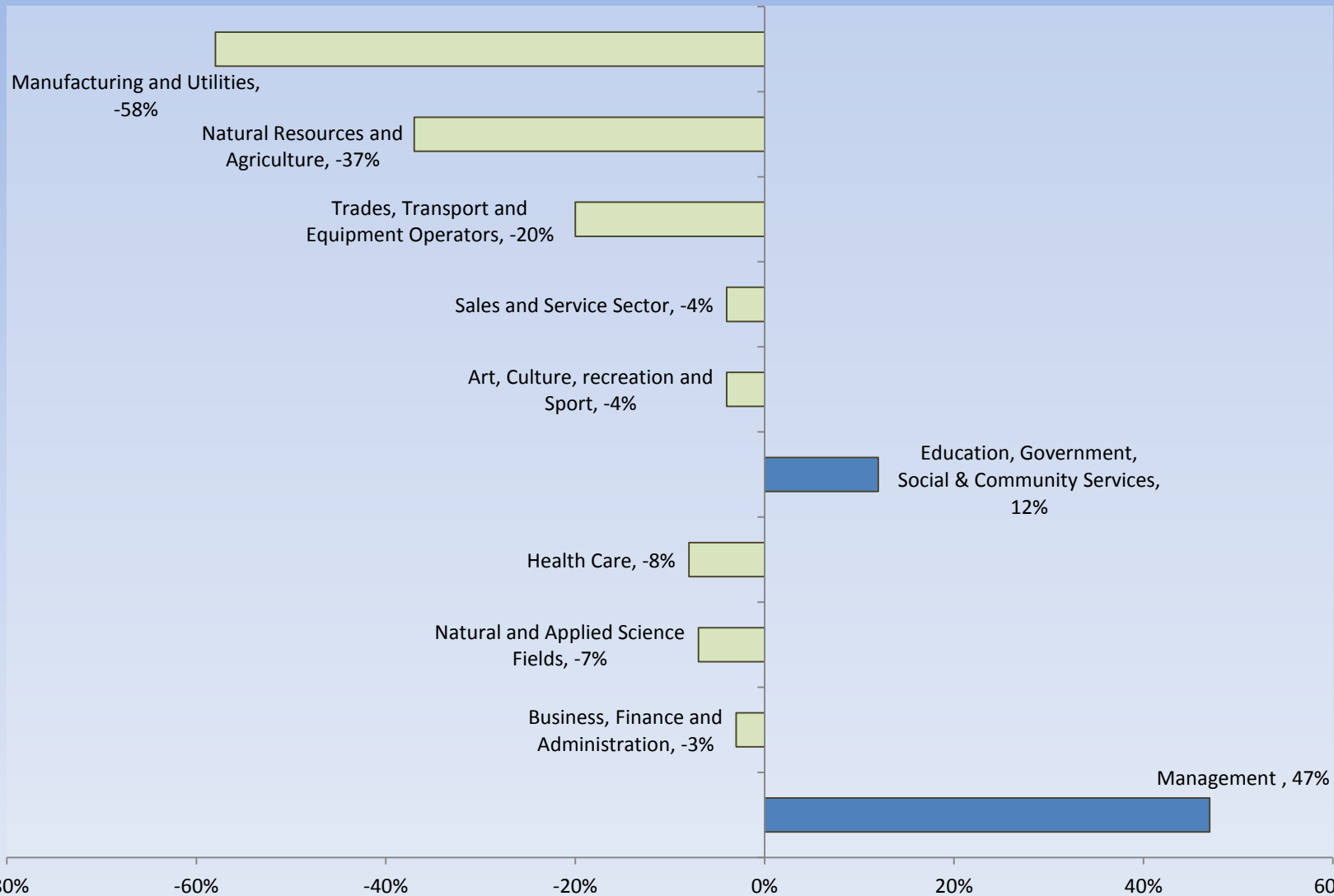
Income Characteristics of Economically Active Population	1996	2001	2006	2011	Change From Previous Period	
Individual Income						
Average Income	\$26,014.50	\$29,802.00	\$37,381.00	\$37,919.00	↑	1%
Median Income	\$22,234.50	\$25,869.00	\$30,827.00	\$30,121.00	↓	(-2%)
Income by Gender						
Average Income – Male	\$28,870.00	\$33,229.00	\$37,381.00	\$38,549.00	↑	3%
Average Income - Female	\$23,159.00	\$26,376.00	\$30,827.00	\$37,330.00	↑	21%
Median Income – Male	\$25,314.00	\$29,248.00	\$31,293.00	\$30,068.00	↓	(-4%)
Median Income - Female	\$19,155.00	\$22,491.00	\$25,735.00	\$30,282.00	↑	18%
Household Income						
Average Household Income	\$41,584.00	\$47,952.00	\$54,183.00	\$58,701.00	↑	8%
Median Household Income	\$34,845.00	\$39,946.00	\$45,277.00	\$46,023.00	↑	2%
Family Income						
Average Family Income	\$53,614.00	\$62,414.00	\$71,885.00	\$82,468.00	↑	15%
Median Family Income	\$48,151.00	\$57,042.00	\$65,198.00	\$69,643.00	↑	7%
Lone-Parent Families						
Average Family Income	N.A.	N.A.	N.A.	\$55,409.00		
Median Family Income	N.A.	N.A.	N.A.	\$46,336.00		

Data Note: Income figures based on previous reporting year (1995, 2000, 2005 & 2010).



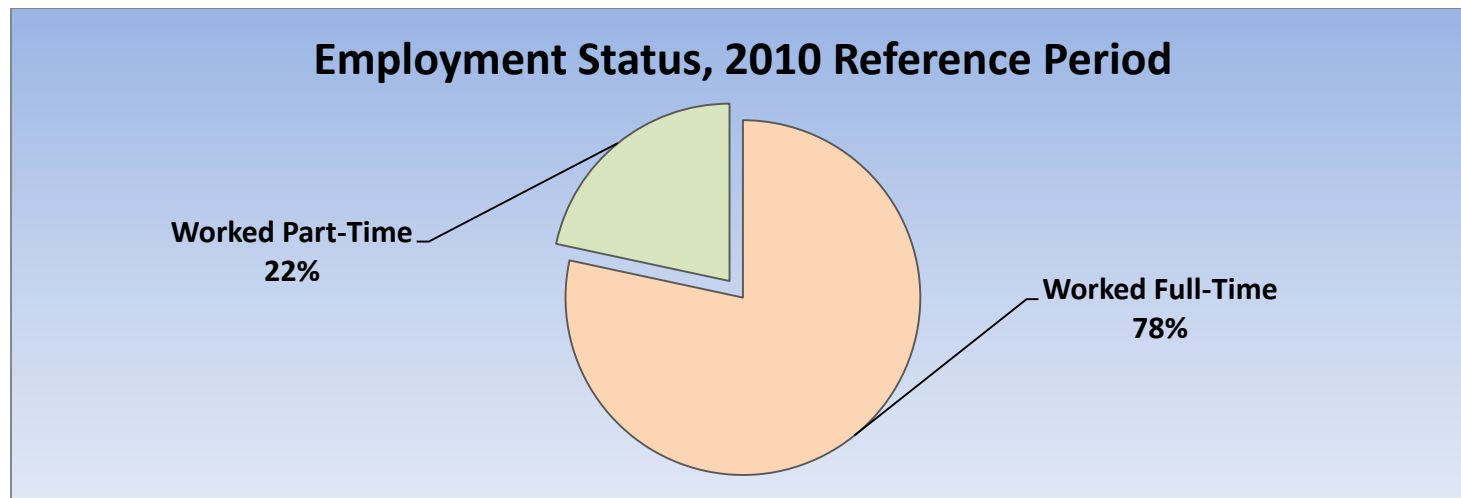
Labour Force by National Occupational Classification	1996	2001	2006	2011	Change From Previous Period	As a % of Labour Force
Management	830	900	600	885	↑ 47%	11%
Business, Finance and Administration	1,545	1,325	1,360	1,320	↓ (-3%)	16%
Natural and Applied Science Fields	345	585	570	530	↓ (-7%)	7%
Health Care	630	615	710	650	↓ (-8%)	8%
Education, Government, Social & Community Services	885	1,185	1,275	1,430	↑ 12%	18%
Art, Culture, recreation and Sport	310	345	415	400	↓ (-4%)	5%
Sales and Service Sector	2,265	2,030	1,880	1,805	↓ (-4%)	22%
Trades, Transport and Equipment Operators	815	870	985	790	↓ (-20%)	10%
Natural Resources and Agriculture	110	75	135	85	↓ (-37%)	1%
Manufacturing and Utilities	560	135	425	180	↓ (-58%)	2%

Employment Trends by Occupational Breakout, 2006-2011



Class of Worker	1996	2001	2006	2011	Change From Previous Period	As a % of Work Force
Employee	7,325	7,560	7,665	7,260	↓ (-5%)	90%
Female	3,780	3,945	3,980	3,895		
Male	3,545	3,620	3,730	3,360		
Self-Employed	940	825	670	810	↑ 21%	10%
Female	350	305	260	230		
Male	590	525	420	580		

Employment Status	1996	2001	2006	2011	Change From Previous Period	As a % of Active Labour Force
Worked Full-Time in 2010	N.A.	N.A.	N.A.	6,170	N.A.	78%
Worked Part-Time in 2010	N.A.	N.A.	N.A.	1,710	N.A.	22%



Mode of Transport to Work	1996	2001	2006	2011	Change From Previous Period	As a % of Work Force
Automobile -As a Driver	4,715	4,855	4,710	4,375	↓ (-7%)	62%
Car-Pool	520	580	635	450	↓ (-29%)	6%
Public Transportation	840	865	835	840	↑ <1%	12%
Walked or Bicycled	1,085	1,090	1,315	1,295	↓ (-2%)	18%
Other Modes	50	75	80	110	↑ 38%	2%
Median Commuting Duration	N.A.	N.A.	N.A.	15.7 min.		

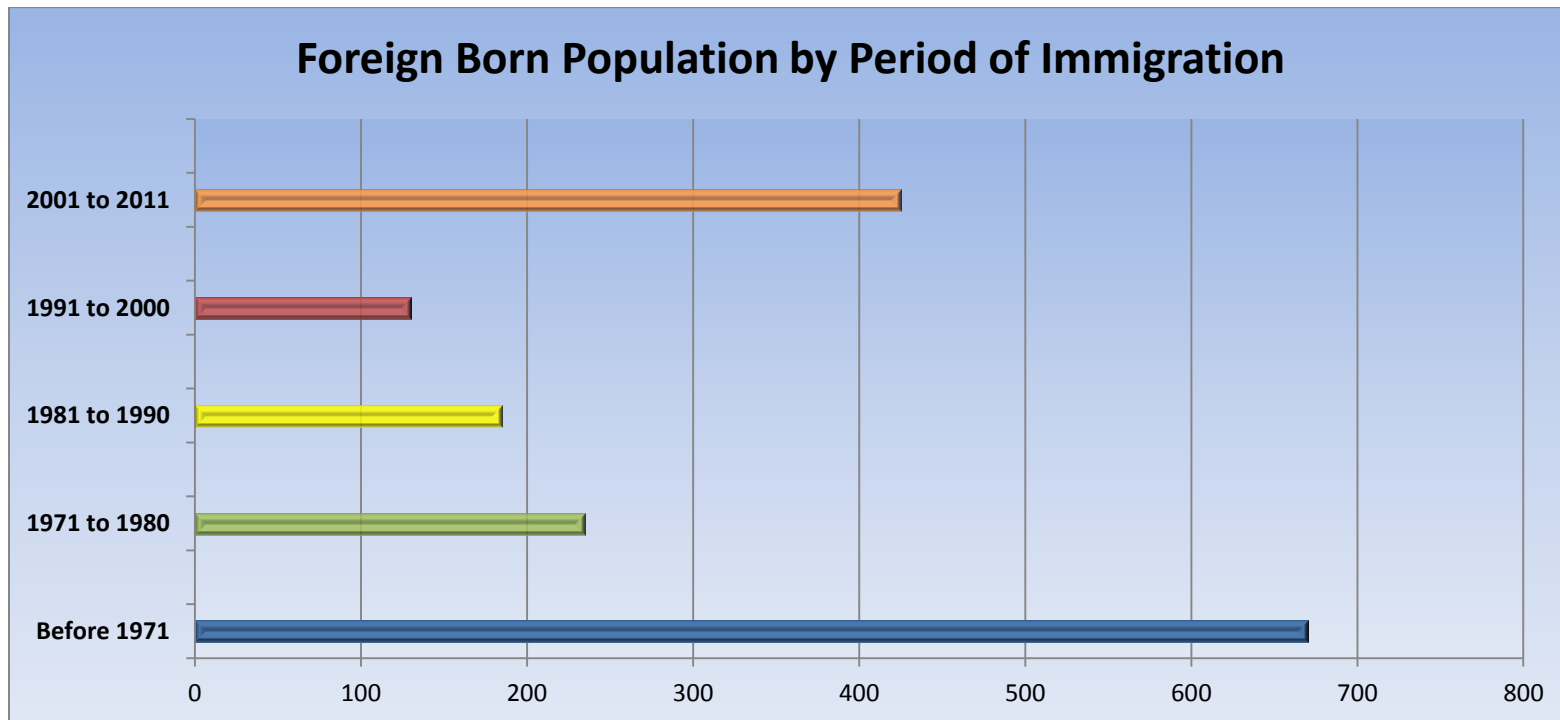
Place of Work	1996	2001	2006	2011	Change From Previous Period	As a % of Work Force
Worked at Home	580	435	395	555	↑ 41%	7%
Worked at a Fixed Address	6,690	6,890	6,840	6,470	↓ (-5%)	85%
No Fixed Workplace Address	530	575	725	590	↓ (-19%)	8%
Worked within Municipality	5,855	6,290	6,165	N.A.		
Work in a different Municipality	830	595	670	N.A.		
Worked outside Canada	10	35	30	0	— —	

Mobility/Migration Status	1996	2001	2006	2011	Change From Previous Period	As a % of Neighbourhood
Lived at the same address 5 years ago	6,235	5,945	6,555	6,550	↓	52%
Moved sometime with the last 5 years	7,055	7,245	6,780	5,990	↓ (-12%)	48%
Internal Migrants	1,740	1,730	1,900	1,620	↓ (-15%)	85%
- Intra-provincial	1,505	1,590	1,590	1,400	↓	
- Inter-provincial	235	310	310	220	↓	
External Migrants	235	355	355	275	↓ (-23%)	15%
Lived at the same address 1 years ago	10,470	11,060	11,100	10,720	↓ (-3%)	81%
Moved sometime with the last year	3,550	2,690	2,810	2,450	↓ (-13%)	19%
Internal Migrants	720	550	1,900	670	↓ (-65%)	88%
- Intra-provincial	620	435	1,590	640	↓ (-60%)	
- Inter-provincial	105	115	310	30	↓ (-90%)	
External Migrants	85	125	120	90	↓ (25%)	12%

Place of Birth	1996	2001	2006	2011	Change From Previous Period		As a % of Neighbourhood
Immigrant Population	N.A.	N.A.	1,825	1,635	↓	(-10%)	12%
Place of Birth by Continent							
North America (US only)	N.A.	N.A.	185	320	↑	73%	2%
Africa	N.A.	N.A.	85	55	↓	(-35%)	<1%
Asia	N.A.	N.A.	220	245	↑	11%	2%
Caribbean	N.A.	N.A.	60	0	↓	(-100%)	0%
Central and South America	N.A.	N.A.	150	70	↓	(-53%)	<1%
Europe	N.A.	N.A.	1,100	995	↓	(-10%)	7%
Recent Immigration by Continent, 2006-2011							
Recent Immigrants	N.A.	N.A.	225	225	—	—	2%
North America (US only)	N.A.	N.A.	60	35	↓	(-42%)	<1%
Africa	N.A.	N.A.	20	0	↓	(-100%)	0%
Asia	N.A.	N.A.	65	15	↓	(-77%)	<1%
Caribbean	N.A.	N.A.	0	0	—	—	0%
Central and South America	N.A.	N.A.	25	0	↓	(-100%)	0%
Europe	N.A.	N.A.	40	75	↑	88%	<1%

Immigration by Place of Birth	1996	2001	2006	2011	Change From Previous Period	As a % of Neighbourhood
1. United Kingdom	N.A.	N.A.	N.A.	460		3%
2. United States	N.A.	N.A.	N.A.	180		1%
3. Netherlands	N.A.	N.A.	N.A.	125		1%
4. Germany	N.A.	N.A.	N.A.	80		<1%
5. China	N.A.	N.A.	N.A.	60		<1%
6. Greece	N.A.	N.A.	N.A.	55		<1%
7. Colombia	N.A.	N.A.	N.A.	50		<1%

Period of Immigration	1996	2001	2006	2011	Change From Previous Period	As a % of Neighbourhood
Before 1971	N.A.	N.A.	495	670	↑	5%
1971 to 1980	N.A.	N.A.	275	235	↑	2%
1981 to 1990	N.A.	N.A.	195	185	↓	1%
1991 to 2000	N.A.	N.A.	385	130	↓	1%
2001 to 2011	N.A.	N.A.	N.A.	425	—	3%



Language	1996	2001	2006	2011	Change From Previous Period		As a % of Neighbourhood
Knowledge of Official Languages							
English Only	12,960	12,570	12,665	12,135	↓	(-4%)	90%
French Only	0	0	0	10	↑	100%	<1%
English and French	1,175	1,365	1,375	1,200	↓	(-13%)	9%
Neither English or French	50	10	10	30	↑	200%	<1%
Language Spoken Most Often at Home							
English	13,550	12,940	13,565	12,845	↓	(-5%)	95%
French	55	40	80	45	↓	(-44%)	<1%
Non-Official Language	455	150	370	335	↓	(-9%)	2%
Mother Tongue *							
English	12,495	12,940	12,575	12,055	↓	(-4%)	89%
French	220	40	205	170	↓	(-17%)	1%
Non-Official Language	1,340	150	1,190	1,025	↓	(-14%)	8%

* Statistics Canada defines 'mother tongue' as the first language learned in childhood and still understood by the individual at the time of census reporting.

Non-Official Languages Spoken Top 10 Reported	1996	2001	2006	2011	Change From Previous Period	As a % of Neighbourhood
1. German	350	360	295	275	↓ (-7%)	2%
2. Spanish	180	275	285	270	↓ (-5%)	2%
3. Arabic	N.A.	10	80	150	↑ 47%	1%
4. Dutch	N.A.	195	115	105	↓ (-9%)	1%
5. Chinese*	N.A.	35	45	105	↑ 133%	1%
6. Polish	N.A.	75	75	105	↑ 40%	1%
7. Portuguese	N.A.	N.A.	N.A.	85	— —	<1%
8. Italian	100	130	110	80	↓	<1%
9. Greek	N.A.	N.A.	N.A.	75	— —	<1%
10. Russian	N.A.	85	70	50	— —	<1%

* Refers to Cantonese and Mandarin language speakers as well as others who do not specify otherwise.

Religious Identification	1996	2001	2006	2011	Change From Previous Period	As a % of Neighbourhood
Buddhist	N.A.	N.A.	N.A.	100		1%
Christian	N.A.	N.A.	N.A.	7,500		56%
Anglican	N.A.	N.A.	N.A.	1,020		8%
Baptist	N.A.	N.A.	N.A.	225		2%
Catholic	N.A.	N.A.	N.A.	3,120		23%
Orthodox	N.A.	N.A.	N.A.	155		1%
Lutheran	N.A.	N.A.	N.A.	155		1%
Pentecostal	N.A.	N.A.	N.A.	90		1%
Presbyterian	N.A.	N.A.	N.A.	390		3%
United Church	N.A.	N.A.	N.A.	1,310		10%
Other Christian	N.A.	N.A.	N.A.	1,035		8%
Hindu	N.A.	N.A.	N.A.	25		0%
Jewish	N.A.	N.A.	N.A.	105		1%
Muslim	N.A.	N.A.	N.A.	220		2%
Sikh	N.A.	N.A.	N.A.	0		0
Aboriginal Spirituality	N.A.	N.A.	N.A.	0		0

Notes:

- (1) Source Data –Statistics Canada. 1996-2011 Census Data, Customized Profiles. Ottawa, Canada
- (2) Data also derived from Statistics Canada’s National Household Survey (NHS)
- (3) Customized Community and Neighbourhood Profiles tabulated and compiled by the City of London’s Planning Division –Policy Planning and Research Section.