



Sharon Creek Neighbourhood Profile

For further information contact:

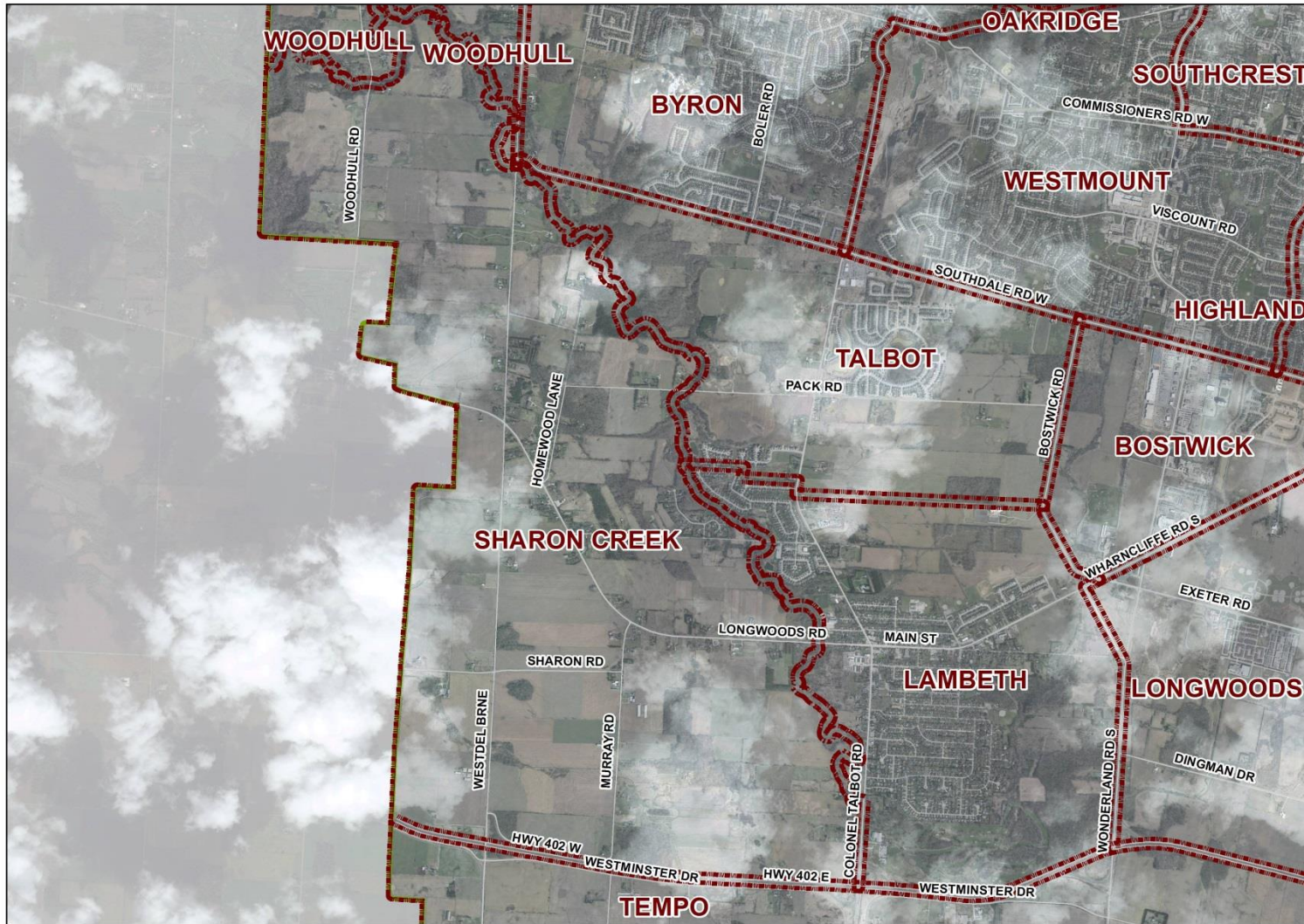
John-Paul Sousa

Planning Research Analyst

Direct: (519) 661-2500 ext. 5989 | email: jpsousa@london.ca




Date Created: Jan. 2014





Neighbourhood Profile -Sharon Creek Planning District



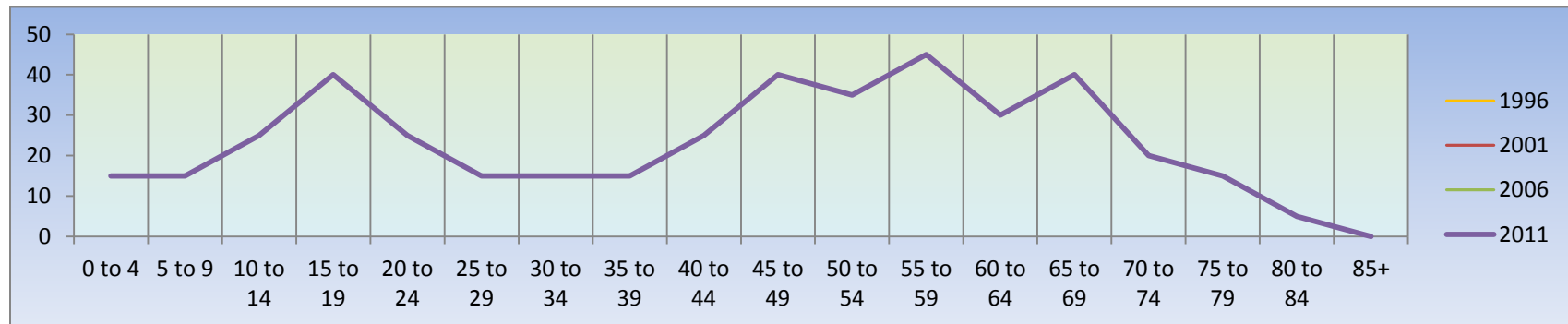
Coordinate System: NAD 1983 UTM Zone 17N
Projection: Transverse Mercator
Datum: North American 1983

Population Characteristics & Age Distribution

Sharon Creek Neighbourhood	1996	2001	2006	2011	Change From Previous Period
Total Population	510	435	470	430	 (-9%)
Female	290	195	220	200	 (-9%)
Male	220	240	250	230	 (-8%)

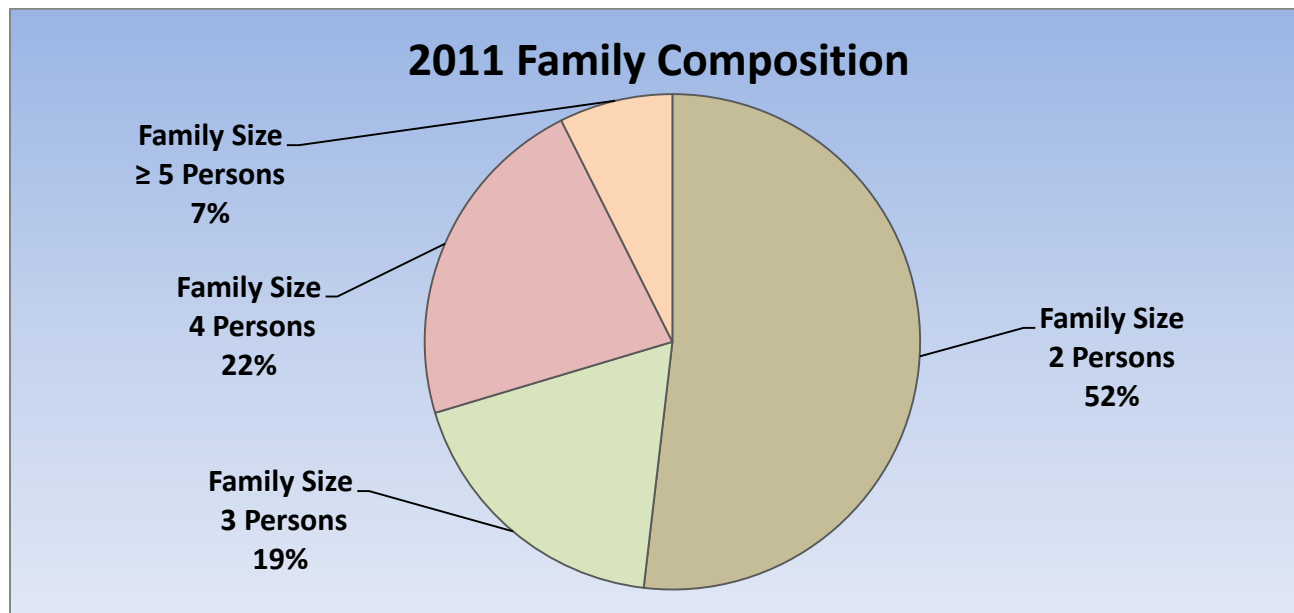
Age Structure	1996	2001	2006	2011	Change From Previous Period	As a % of Neighbourhood
0-19	115	115	140	95		22%
0 to 4	N.A.	N.A.	N.A.	N.A.		2%
5 to 9	N.A.	N.A.	N.A.	N.A.		5%
10 to 14	N.A.	N.A.	N.A.	N.A.		6%
15 to 19	N.A.	N.A.	N.A.	N.A.		9%
20-44	180	115	105	95		22%
45-64	130	145	145	160		37%
65+	80	55	80	95		22%
Median Age	N.A.	N.A.	N.A.	49.6		

2011 Census Age Cohort Breakout	Male	Female	Total	As a % of Neighbourhood
0 to 4	5	10	15	3.75%
5 to 9	10	5	15	3.75%
10 to 14	15	10	25	5.95%
15 to 19	20	20	40	9.52%
20 to 24	15	10	25	5.95%
25 to 29	5	10	15	3.57%
30 to 34	10	5	15	3.75%
35 to 39	5	10	15	3.57%
40 to 44	15	10	25	5.95%
45 to 49	20	20	40	9.52%
50 to 54	15	20	35	8.33%
55 to 59	25	20	45	10.71%
60 to 64	15	15	30	7.14%
65 to 69	25	15	40	9.52%
70 to 74	10	10	20	4.76%
75 to 79	10	5	15	3.57%
80 to 84	5	0	5	1.19%
85+	0	0	0	0%
Total	225	195	420	



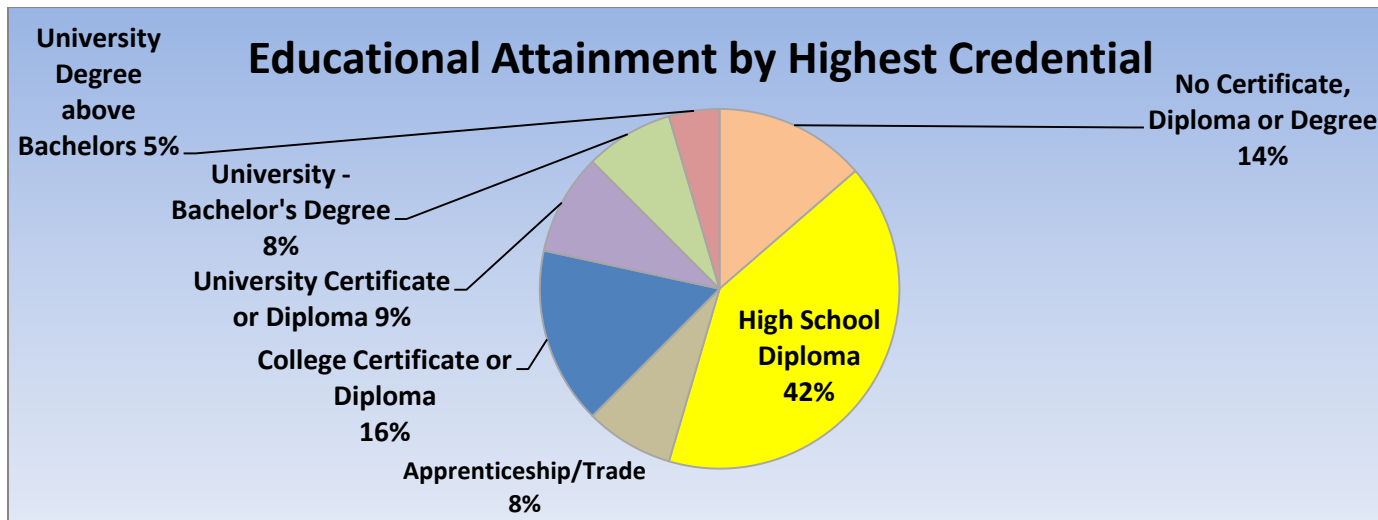
Marital Status	1996	2001	2006	2011	Change From Previous Period	As a % of Neighbourhood
Single	140	90	75	85	↑	20%
Married	260	220	255	240	↓	56%
Common-Law	20	40	15	15	—	3%
Divorced	20	35	15	10	↓	2%
Separated	0	0	10	10	—	2%
Widowed	15	10	10	10	—	2%
Citizenship, Immigration & Ethnic Identity	1996	2001	2006	2011	Change From Previous Period	As a % of Neighbourhood
Citizenship						
Canadian Citizens	500	415	470	430	↓	100%
Non-Canadian Citizens	10	15	0	0	—	0%
Immigration Status						
Canadian Born Population	455	350	360	310	↓	72%
Foreign Born Population	50	80	110	120	↑	28%
Visible Minority Population	0	0	30	45	↑	10%
Aboriginal Identity Population	0	30	0	0	—	0%

Family Composition	1996	2001	2006	2011	Change From Previous Period	As a % of Neighbourhood
Number of Census Families	140	135	135	135	—	
Family Size - 2 Persons	50	60	55	70	↑	52%
Family Size - 3 Persons	30	40	20	25	↑	19%
Family Size - 4 Persons	40	25	35	30	↓	22%
Family Size - ≥ 5 Persons	20	10	25	10	↓	7%
Census Family - Average Size	3.30	2.80	3.30	2.90		



Family Structure & Number of Children	1996	2001	2006	2011	Change From Previous Period
Married Couples	130	105	130	120	↓
Without Children	45	50	50	60	↑
With Children	85	60	75	60	↓
Common-Law	10	0	0	10	↑
Without Children	0	0	0	N.A.	
With Children	10	0	0	N.A.	
Lone Parent Families	0	10	0	10	↑
Female Headed	0	0	0	N.A.	
1 Child	0	0	0	N.A.	
2 Children	0	0	0	N.A.	
≥ 3 Children	0	0	0	N.A.	
Male Headed	N.A.	10	N.A.	N.A.	
1 Child	N.A.	N.A.	N.A.	N.A.	
2 Children	N.A.	N.A.	N.A.	N.A.	
≥ 3 Children	N.A.	N.A.	N.A.	N.A.	

Educational Attainment by Credential	1996	2001	2006	2011	Change From Previous Period	As a % of Neighbourhood
No Certificate, Diploma or Degree	N.A.	N.A.	70	60	↓	14%
High School Diploma or Equivalent	N.A.	N.A.	45	180	↑	42%
Apprenticeship, or Trade Certificate	N.A.	N.A.	45	35	↓	8%
College Certificate or Diploma	N.A.	N.A.	70	70	—	16%
University Certificate or Diploma	N.A.	N.A.	10	40	↑	9%
University -Bachelor's Degree	N.A.	N.A.	35	35	—	8%
University Degree above bachelor level (M.A. or PhD)	N.A.	N.A.	10	20	↑	5%



Housing by Structure Type & Tenure	1996	2001	2006	2011	Change From Previous Period		As a % of Neighbourhood
Total Occupied Dwellings	180	165	160	160	—	—	
Single-Detached	160	155	155	160	—	—	100%
Semi-Detached	0	0	10	0			
Row House	0	0	0	0			
Duplex	25	0	0	0			
Apartment < 5 Storeys	0	10	0	0			
Apartment ≥ 5 Storeys	0	0	0	0			
Number of Owned Dwellings	135	140	130	130	—	—	
Owned as a % of Total	75%	85%	81%	72%			
Number of Rented Dwellings	45	25	30	50			
Rented as a % of Total	25%	15%	19%	28%			
Average # of Rooms	8.10	8.50	8.90	8.6			
Average # of Bedrooms	3.20	3.60	3.60	N.A.			
Average Gross Rent	\$1,051.00	\$758.00	\$458.00	\$1,100.00	↑		
Average Value of Dwelling	\$273,296.00	\$337,590.00	\$432,762.00	\$471,884.00	↑		

Labour Market Indicators	1996	2001	2006	2011	Change From Previous Period	As a % of Neighbourhood
Total Labour Force ≥ 15 years	265	260	240	275	↑	
Female	135	120	105	125	↑	45%
Male	130	140	135	160	↑	55%
Unemployment Rate	15%	N.A.	N.A.	N.A.		
Female	N.A.	N.A.	N.A.	N.A.		
Male	N.A.	N.A.	N.A.	N.A.		
Employment Rate	N.A.	N.A.	N.A.	N.A.		
Participation Rate	61%	72%	69%	64%	↓	
Female	60%	75%	64%	54%	↓	
Male	63%	72%	71%	74%	↑	
Labour Force by Sector						
Primary (Agriculture & Resources)	35	0	25	0	↓	0%
Secondary (Construction & Manufacturing)	55	60	40	85	↑	30%
Tertiary Services	180	200	175	200	↑	70%

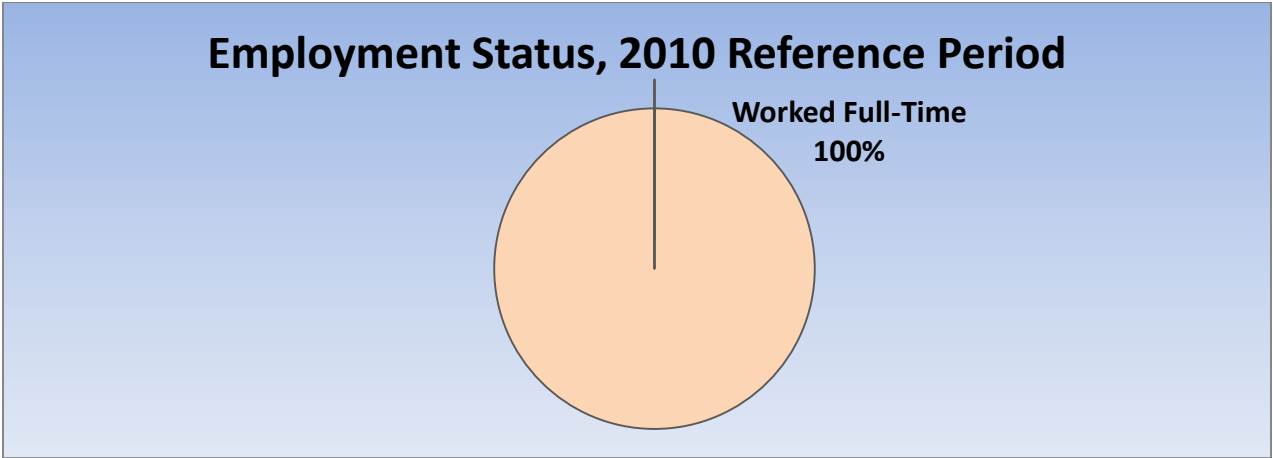
Income Characteristics of Economically Active Population	1996	2001	2006	2011	Change From Previous Period
Individual Income					
Average Income	\$34,153.00	\$94,407.00	N.A.	N.A.	
Median Income	\$21,938.00	\$24,779.00	N.A.	N.A.	
Income by Gender					
Average Income – Male	\$50,795.00	\$137,741.00	N.A.	N.A.	
Average Income - Female	\$17,511.00	\$51,074.00	N.A.	N.A.	
Median Income – Male	\$29,424.00	\$37,100.00	N.A.	N.A.	
Median Income - Female	\$14,452.00	\$12,458.00	N.A.	N.A.	
Household Income					
Average Household Income	\$78,244.00	N.A.	N.A.	\$153,627.00	
Median Household Income	\$63,243.00	N.A.	N.A.	\$88,383.00.	
Family Income					
Average Family Income	\$86,671.00	\$134,827.00	N.A.	\$160,881.00	
Median Family Income	\$63,867.00	\$81,987.00	N.A.	\$90,511.00	
Lone-Parent Families					
Average Family Income	N.A.	N.A.	N.A.	N.A.	
Median Family Income	N.A.	N.A.	N.A.	N.A.	

Data Note: Income figures based on previous reporting year (1995, 2000, 2005 & 2010).

Labour Force by National Occupational Classification	1996	2001	2006	2011	Change From Previous Period	As a % of Labour Force
Management	15	40	10	20	↑	8%
Business, Finance and Administration	45	50	40	70	↑	27%
Natural and Applied Science Fields	10	0	10	0	↓	0%
Health Care	20	30	40	0	↓	0%
Education, Government, Social & Community Services	30	10	0	0	—	0%
Art, Culture, recreation and Sport	0	0	0	0	—	0%
Sales and Service Sector	50	45	55	85	↑	33%
Trades, Transport and Equipment Operators	45	60	35	70	↑	27%
Natural Resources and Agriculture	15	0	35	0	↓	0%
Manufacturing and Utilities	10	20	10	15	↑	6%

Class of Worker	1996	2001	2006	2011	Change From Previous Period	As a % Neighbourhood
Employee	220	160	185	200	↑	70%
Female	115	100	90	115		
Male	105	60	95	85		
Self-Employed	50	95	50	85	↑	30%
Female	20	15	10	0		
Male	30	80	40	85		

Employment Status	1996	2001	2006	2011	Change From Previous Period	As a % of Active Labour Force
Worked Full-Time in 2010	N.A.	N.A.	N.A.	135	N.A.	100%
Worked Part-Time in 2010	N.A.	N.A.	N.A.	0	N.A.	0%



Mode of Transport to Work	1996	2001	2006	2011	Change From Previous Period	As a % of Neighbourhood
Automobile -As a Driver	155	185	190	225	↑	92%
Car-Pool	30	25	0	20	↑	8%
Public Transportation	0	10	0	0	—	0%
Walked or Bicycled	0	20	0	0	—	0%
Other Modes	0	0	0	0	—	0%
Median Commuting Duration	N.A.	N.A.	N.A.	20.0		

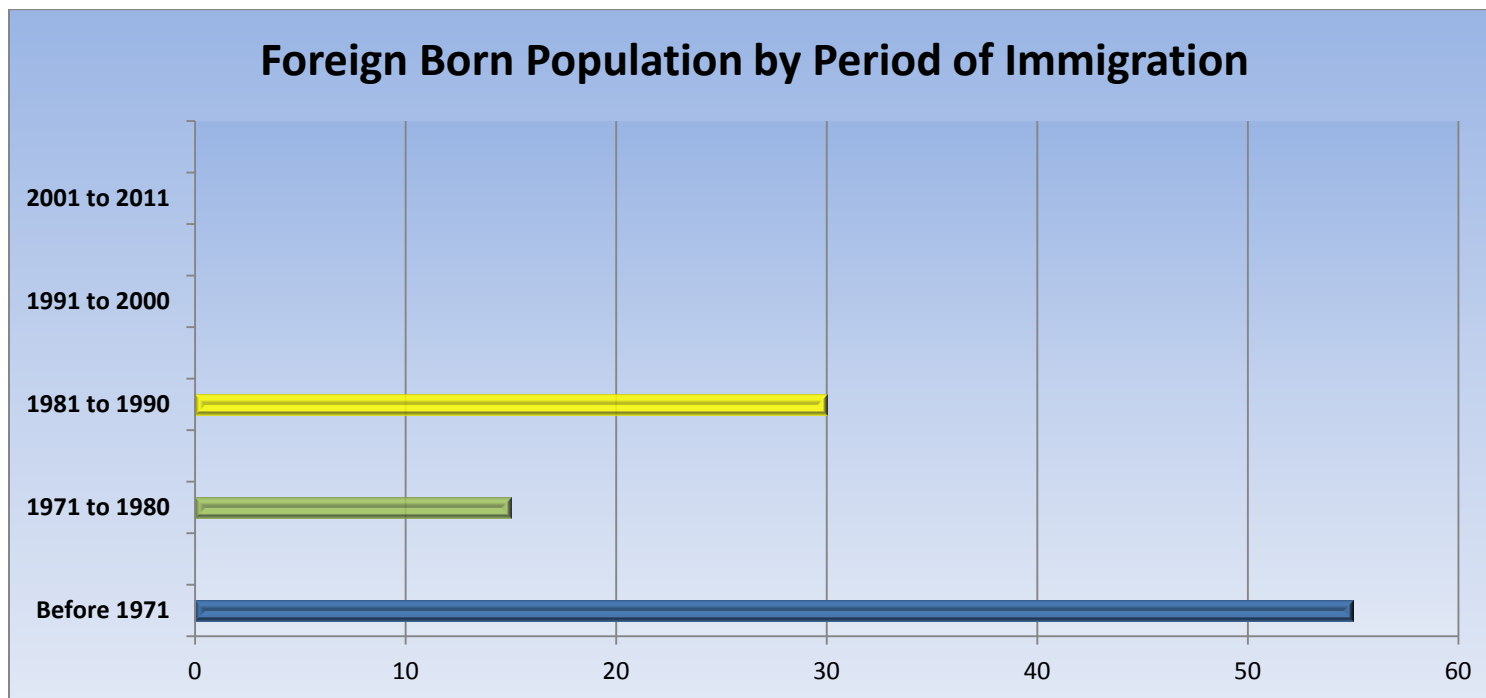
Place of Work	1996	2001	2006	2011	Change From Previous Period	As a % of Neighbourhood
Worked at Home	35	35	35	20	↑	7%
Worked at a Fixed Address	165	210	170	225	↑	83%
No Fixed Workplace Address	20	15	20	25	↑	9%
Worked within Municipality	135	95	140	N.A.		
Work in a different Municipality	25	25	35	N.A.		
Worked outside Canada	0	0	0	0	—	0%

Mobility/Migration Status	1996	2001	2006	2011	Change From Previous Period	As a % of Neighbourhood
Lived at the same address 5 years ago	380	310	360	370	↑	70%
Moved sometime with the last 5 years	105	95	110	155	↑	30%
Internal Migrants	55	35	85	35	↓	100%
- Intra-provincial	25	35	75	30	↓	
- Inter-provincial	30	0	10	5	↓	
External Migrants	0	0	0	0	—	0%
Lived at the same address 1 years ago	475	365	445	555	↑	96%
Moved sometime with the last year	35	55	25	25	—	4%
Internal Migrants	20	20	20	0	↓	0%
- Intra-provincial	20	20	20	0	↓	
- Inter-provincial	0	0	0	0	—	
External Migrants	0	0	0	0	—	0%

Place of Birth	1996	2001	2006	2011	Change From Previous Period	As a % of Neighbourhood
Total Immigrant Population	N.A.	N.A.	115	120	↑	28%
Place of Birth by Continent						
North America (US only)	N.A.	N.A.	N.A.	N.A.		
Africa	N.A.	N.A.	N.A.	N.A.		
Asia	N.A.	N.A.	N.A.	N.A.		
Caribbean	N.A.	N.A.	N.A.	N.A.		
Central and South America	N.A.	N.A.	N.A.	N.A.		
Europe	N.A.	N.A.	105	75	↓	17%
Recent Immigration by Continent, 2006-2011						
Recent Immigrants	N.A.	N.A.	0	0	—	0%
North America (US only)	N.A.	N.A.	0	0	—	
Africa	N.A.	N.A.	0	0	—	
Asia	N.A.	N.A.	0	0	—	
Caribbean	N.A.	N.A.	0	0	—	
Central and South America	N.A.	N.A.	0	0	—	
Europe	N.A.	N.A.	0	0	—	

Immigration by Place of Birth	1996	2001	2006	2011	Change From Previous Period	As a % of Neighbourhood
1. N.A.	N.A.	N.A.	N.A.	N.A.		

Period of Immigration	1996	2001	2006	2011	Change From Previous Period	As a % of Neighbourhood
Before 1971	N.A.	N.A.	95	55	↓	13%
1971 to 1980	N.A.	N.A.	N.A.	15		3%
1981 to 1990	N.A.	N.A.	N.A.	30		7%
1991 to 2000	N.A.	N.A.	N.A.	0		0%
2001 to 2011	N.A.	N.A.	N.A.	0		0%



Language	1996	2001	2006	2011	Change From Previous Period	As a % of Neighbourhood
Knowledge of Official Languages						
English Only	485	405	415	410	↓	95%
French Only	0	0	0	0	—	0%
English and French	25	20	55	25	↓	6%
Neither English or French	0	0	0	5		1%
Language Spoken Most Often at Home						
English	515	415	460	410	↓	95%
French	0	0	0	0	—	0%
Non-Official Language	0	0	15	25	↑	6%
Mother Tongue *						
English	455	350	325	350	↑	81%
French	10	10	0	5	↑	1%
Non-Official Language	50	65	130	75	↓	17%

* Statistics Canada defines 'mother tongue' as the first language learned in childhood and still understood by the individual at the time of census reporting.

Non-Official Languages Spoken Top 10 Reported	1996	2001	2006	2011	Change From Previous Period	As a % of Neighbourhood
1. N.A.	N.A.	N.A.	N.A.	N.A.		

Religious Identification	1996	2001	2006	2011	Change From Previous Period	As a % of Neighbourhood
Buddhist	N.A.	N.A.	N.A.	0		0%
Christian	N.A.	N.A.	N.A.	500		92%
Anglican	N.A.	N.A.	N.A.	40		9%
Baptist	N.A.	N.A.	N.A.	20		5%
Catholic	N.A.	N.A.	N.A.	210		49%
Orthodox	N.A.	N.A.	N.A.	0		0%
Lutheran	N.A.	N.A.	N.A.	15		3%
Pentecostal	N.A.	N.A.	N.A.	0		0%
Presbyterian	N.A.	N.A.	N.A.	75		17%
United Church	N.A.	N.A.	N.A.	100		23%
Other Christian	N.A.	N.A.	N.A.	20		5%
Hindu	N.A.	N.A.	N.A.	0		0%
Jewish	N.A.	N.A.	N.A.	0		0%
Muslim	N.A.	N.A.	N.A.	35		8%
Sikh	N.A.	N.A.	N.A.	0		0%
Aboriginal Spirituality	N.A.	N.A.	N.A.	0		0%

Notes:

- (1) Source Data –Statistics Canada. 1996-2011 Census Data, Customized Profiles. Ottawa, Canada
- (2) Data also derived from Statistics Canada’s National Household Survey (NHS)
- (3) Customized Community and Neighbourhood Profiles tabulated and compiled by the City of London’s Planning Division –Policy Planning and Research Section.