



North London Neighbourhood Profile

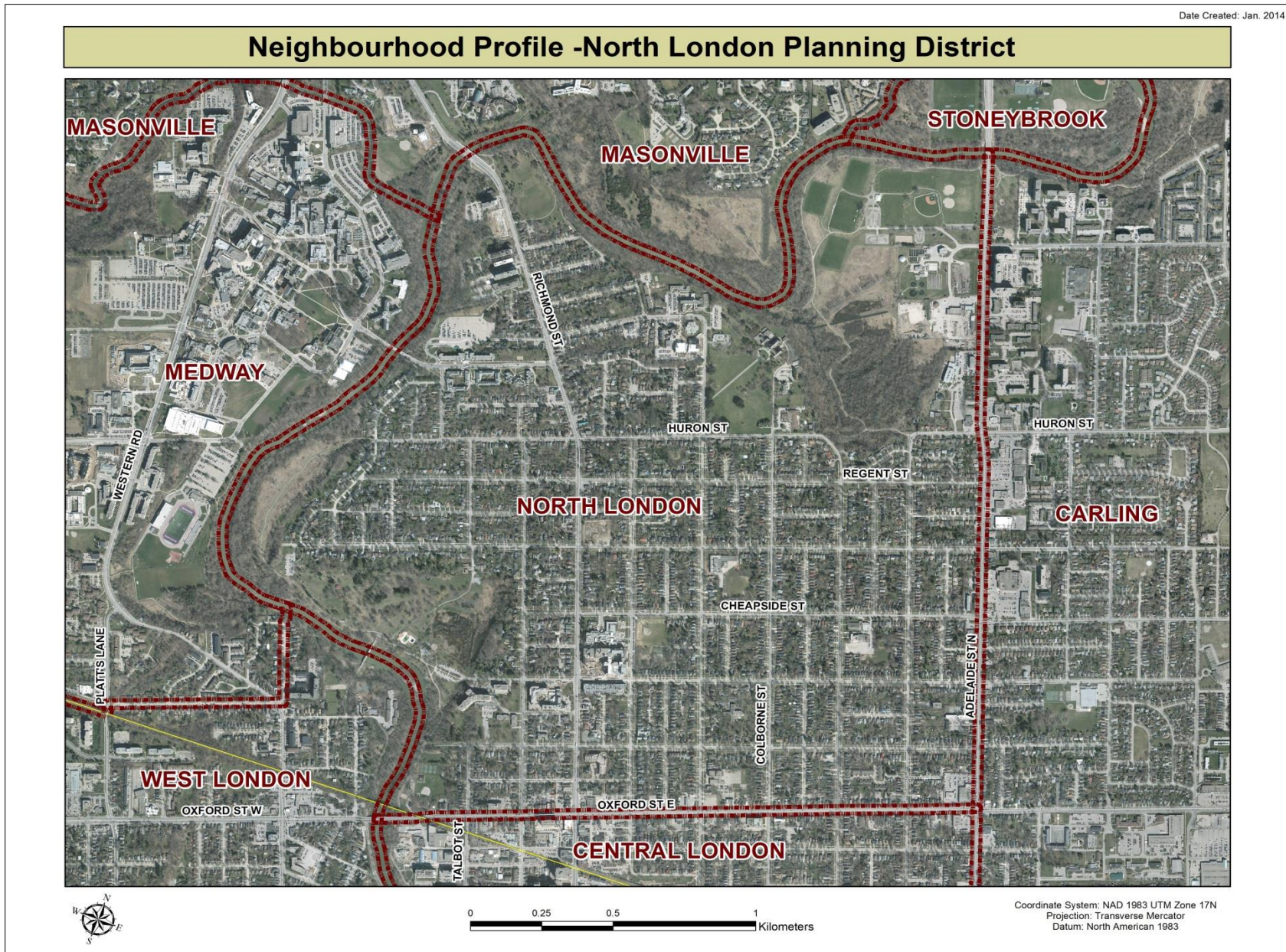
For further information contact:

John-Paul Sousa

Planning Research Analyst

Direct: (519) 661-2500 ext. 5989 | email: jpsousa@london.ca

Date Created: Jan. 2014

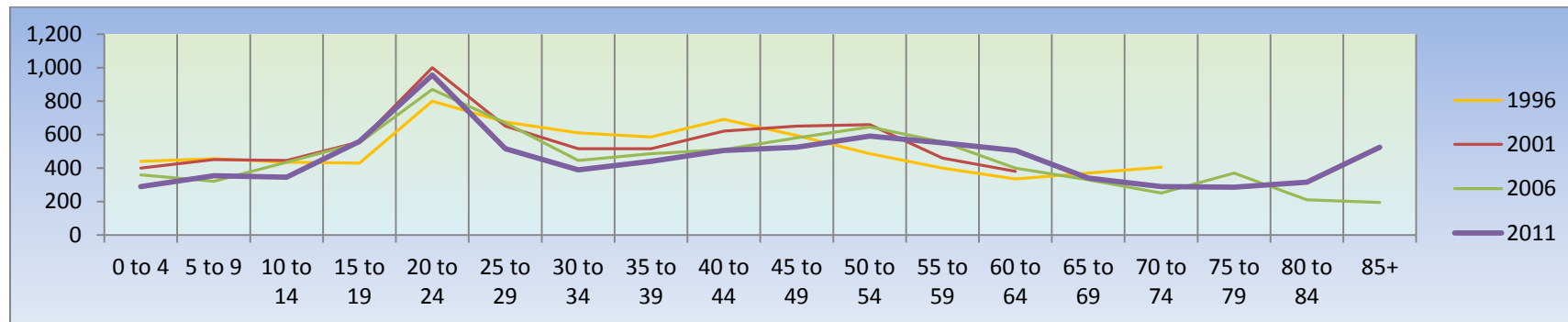


Population Characteristics & Age Distribution

North London Neighbourhood	1996	2001	2006	2011	Change From Previous Period	
Total Population	8,540	8,710	8,190	8,285	↑	1%
Female	4,635	4,565	4,295	4,475	↑	4%
Male	3,905	4,145	3,895	3,805	↓	(-2%)

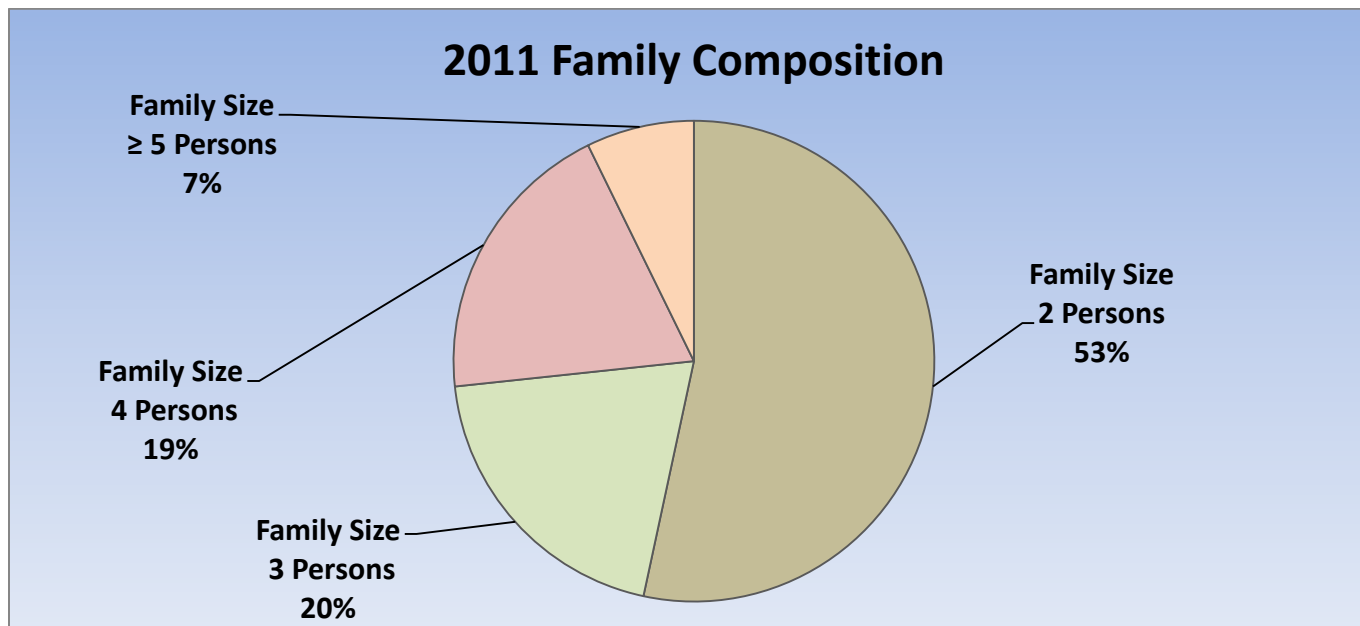
Age Structure	1996	2001	2006	2011	Change From Previous Period		As a % of Neighbourhood
0-19	1,785	1,850	1,665	1,550	↓	(-7%)	19%
0 to 4	440	400	360	290	↓	(-19%)	4%
5 to 9	455	450	320	355	↑	11%	4%
10 to 14	435	445	435	345	↓	(-23%)	4%
15 to 19	430	555	550	560	↑	2%	7%
20-44	3,360	3,300	2,950	2,805	↓	(-5%)	34%
45-64	1,815	2,150	2,180	2,170	↓	(<-1%)	26%
65+	1,590	1,410	1,335	1,755	↑	31%	21%
Median Age	N.A.	N.A.	N.A.	42.8			

2011 Census Age Cohort Breakout	Male	Female	Total	As a % of Neighbourhood
0 to 4	380	370	750	5.02%
5 to 9	315	355	670	5.02%
10 to 14	445	380	825	5.52%
15 to 19	475	445	920	6.15%
20 to 24	430	415	845	5.65%
25 to 29	575	525	1,100	7.36%
30 to 34	470	485	955	6.39%
35 to 39	520	495	1,015	6.79%
40 to 44	570	480	1,050	7.02%
45 to 49	645	675	1,320	8.83%
50 to 54	705	705	1,410	9.43%
55 to 59	545	540	1,085	7.26%
60 to 64	440	460	900	6.02%
65 to 69	295	290	585	3.91%
70 to 74	235	245	480	3.21%
75 to 79	210	235	445	2.98%
80 to 84	130	200	330	2.21%
85+	105	165	270	1.81%
Total	7,490	7,465	14,955	



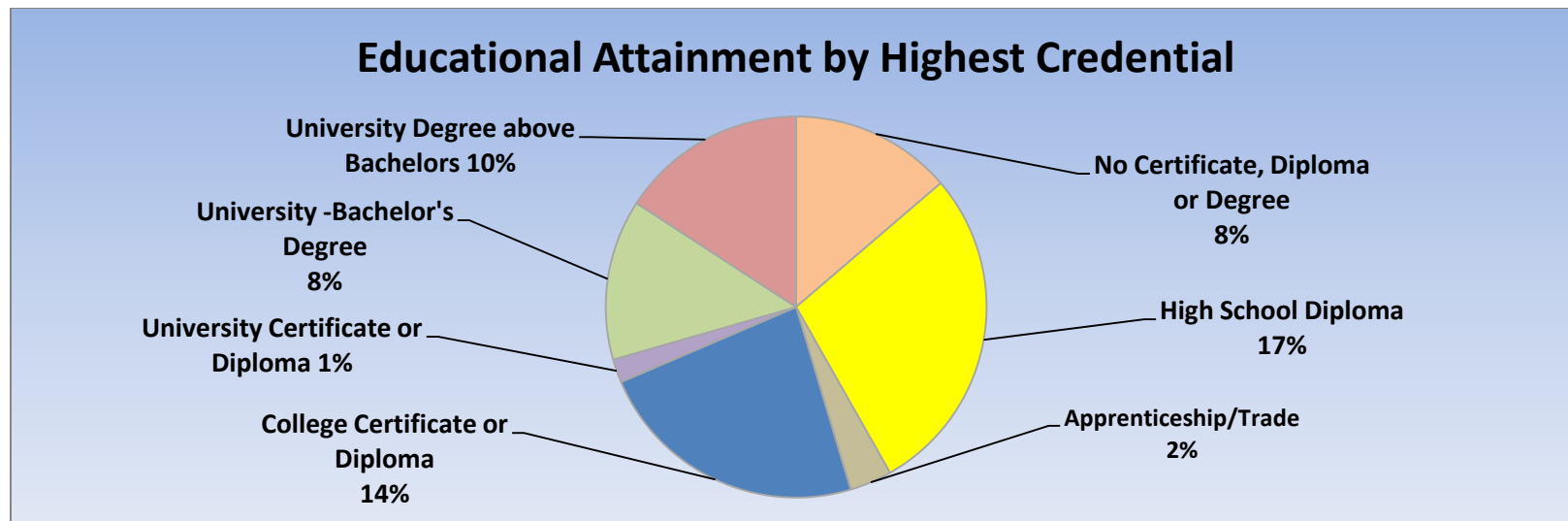
Marital Status	1996	2001	2006	2011	Change From Previous Period	As a % of Neighbourhood
Single	2,515	2,885	2,870	2,540	↓ (-11%)	31%
Married	3,445	3,390	3,155	2,935	↓ (-7%)	35%
Common-Law	230	380	530	550	↑ 4%	7%
Divorced	495	480	460	380	↓ (-17%)	5%
Separated	195	175	175	190	↑ 9%	2%
Widowed	560	485	410	695	↑ 70%	8%
Citizenship, Immigration & Ethnic Identity	1996	2001	2006	2011	Change From Previous Period	As a % of Neighbourhood
Citizenship						
Canadian Citizens	8,190	8,140	7,685	7,420	↓ (-3%)	90%
Non-Canadian Citizens	350	570	500	295	↓ (-41%)	4%
Immigration Status						
Canadian Born Population	6,940	7,100	6,705	6,705	— —	81%
Foreign Born Population	1,555	1,420	1,350	945	↓ (-30%)	11%
Visible Minority Population	330	530	600	605	↑ 1%	7%
Aboriginal Identity Population	30	30	80	210	↑ 163%	3%

Family Composition	1996	2001	2006	2011	Change From Previous Period	As a % of Neighbourhood
Number of Census Families	2,180	2,150	2,125	1,930	↓ (-9%)	
Family Size - 2 Persons	1,190	1,130	1,085	1,030	↓ (-5%)	53%
Family Size - 3 Persons	375	380	430	385	↓ (-10%)	20%
Family Size - 4 Persons	390	435	420	375	↓ (-10%)	19%
Family Size - ≥ 5 Persons	225	205	190	140	↓ (-26%)	7%
Census Family - Average Size	2.9	2.9	2.9	2.8	↓	



Family Structure & Number of Children	1996	2001	2006	2011	Change From Previous Period	
Married Couples	1,705	1,670	1,570	1,375	↓	(-12%)
Without Children	825	830	685	645	↓	(-6%)
With Children	885	840	895	730	↓	(-18%)
Common-Law	165	190	265	275	↑	4%
Without Children	135	100	200	220	↑	10%
With Children	40	85	65	55	↓	(-15%)
Lone Parent Families	310	290	290	280	↓	(-3%)
Female Headed	290	240	255	225	↓	(-12%)
1 Child	215	175	185	130	↓	(-30%)
2 Children	45	55	55	75	↑	36%
≥ 3 Children	25	15	20	20	—	
Male Headed	20	55	30	55	↑	83%
1 Child	20	30	15	30	↑	100%
2 Children	0	20	10	20	↑	100%
≥ 3 Children	0	0	0	0	—	

Educational Attainment by Credential	1996	2001	2006	2011	Change From Previous Period	As a % of Neighbourhood
No Certificate, Diploma or Degree	N.A.	4,570	675	690	↑ 2%	8%
High School Diploma or Equivalent	N.A.	N.A.	1,610	1,410	↓ (-12%)	17%
Apprenticeship, or Trade Certificate	100	355	205	180	↓ (-12%)	2%
College Certificate or Diploma	N.A.	975	1,060	1,165	↑ 10	14%
University Certificate or Diploma	N.A.	N.A.	N.A.	100	— —	1%
University -Bachelor's Degree	N.A.	N.A.	1,450	685	↓ (-53%)	8%
University Degree above bachelor level (M.A. or PhD)	N.A.	N.A.	1,270	795	↓ (-37%)	10%

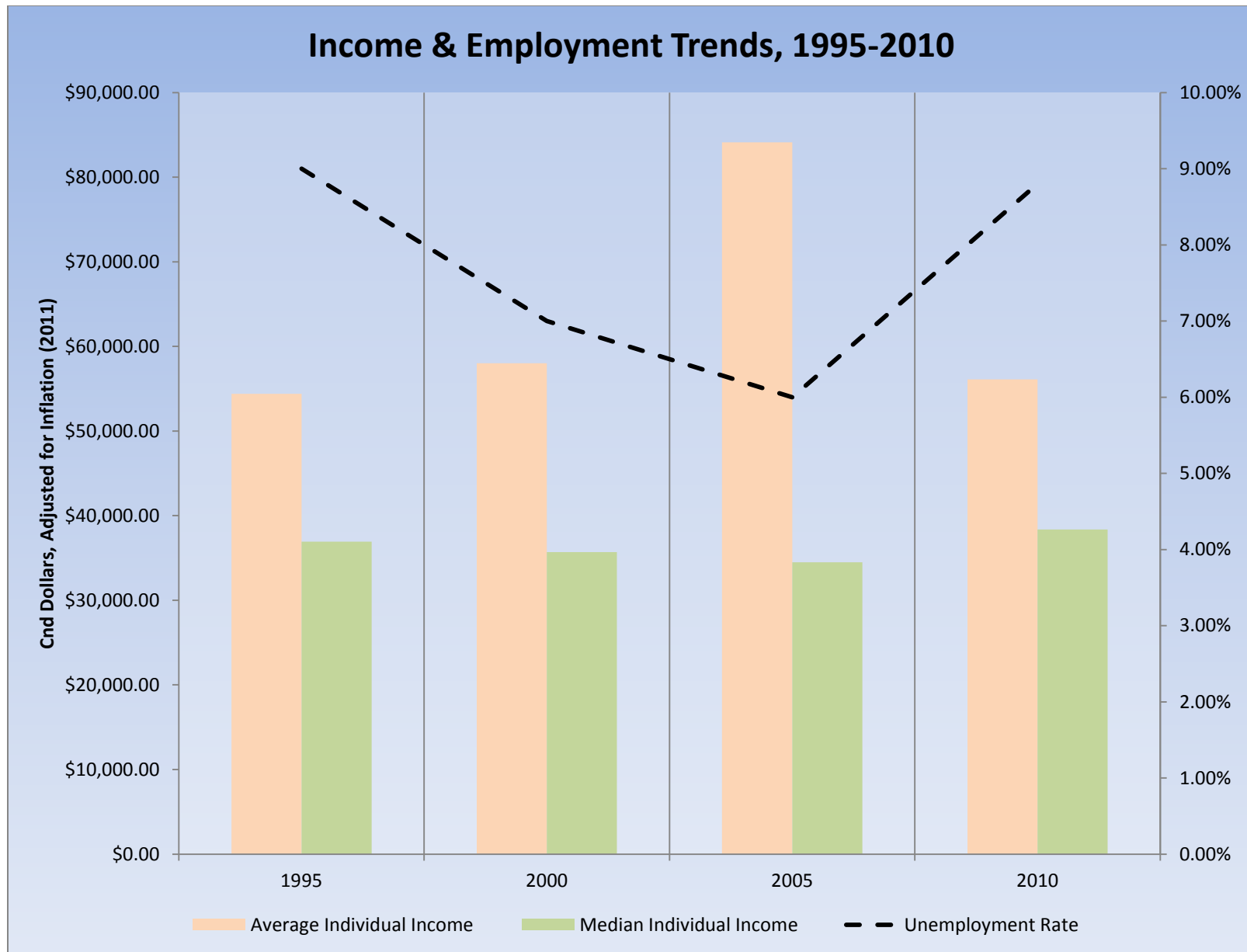


Housing by Structure Type & Tenure	1996	2001	2006	2011	Change From Previous Period	As a % of Neighbourhood
Total Occupied Dwellings	3,925	4,005	3,815	3,575	↓ (-6%)	
Single-Detached	2,370	2,475	2,145	2,095	↓ (-2%)	59%
Semi-Detached	75	100	35	60	↑ 71%	2%
Row House	35	35	30	35	↑ 17%	1%
Duplex	250	180	385	285	↓ (-26%)	8%
Apartment < 5 Storeys	440	395	510	430	↓ (-16%)	12%
Apartment ≥ 5 Storeys	745	815	680	670	↓ (-1%)	19%
Number of Owned Dwellings	2,370	2,430	2,345	2,240	↓ (-4%)	
Owned as a % of Total	60%	61%	62%	62%	— —	
Number of Rented Dwellings	1,555	1,575	1,465	1,355	↓ (-8%)	
Rented as a % of Total	40%	39%	38%	38%	— —	
Average # of Rooms	6.7	6.9	6.7	6.9	↑	
Average # of Bedrooms	2.7	2.7	2.7	N.A.	—	
Average Gross Rent	\$698.00	\$709.00	\$783.00	\$866.00	↑ 11%	
Average Value of Dwelling	\$205,471.00	\$217,820.00	\$286,426.00	\$346,864.00	↑ 21%	

Labour Market Indicators	1996	2001	2006	2011	Change From Previous Period	As a % of Work Force
Total Labour Force ≥ 15 years	4,830	4,770	4,885	4,530	↓ (-7%)	
Female	2,435	2,330	2,475	2,265	↓ (-8%)	50%
Male	2,395	2,440	2,410	2,265	↓ (-6%)	50%
Unemployment Rate	9%	7%	6%	8.8%	↑	
Female	9%	8%	7%	8.2%	↑	
Male	8%	7%	6%	9.5%	↑	
Employment Rate	N.A.	N.A.	N.A.	65.20%	–	
Participation Rate	67%	65%	69%	71.90%	↑	
Female	62%	65%	69%	63.60%	↓	
Male	74%	71%	73%	71.90%	↓	
Labour Force by Sector						
Primary (Agriculture & Resources)	60	35	20	35	↑ 75%	1%
Secondary (Construction & Manufacturing)	435	400	405	285	↓ (-30%)	6%
Tertiary Services	4,425	4,305	4,430	4,090	↓ (-8%)	93%

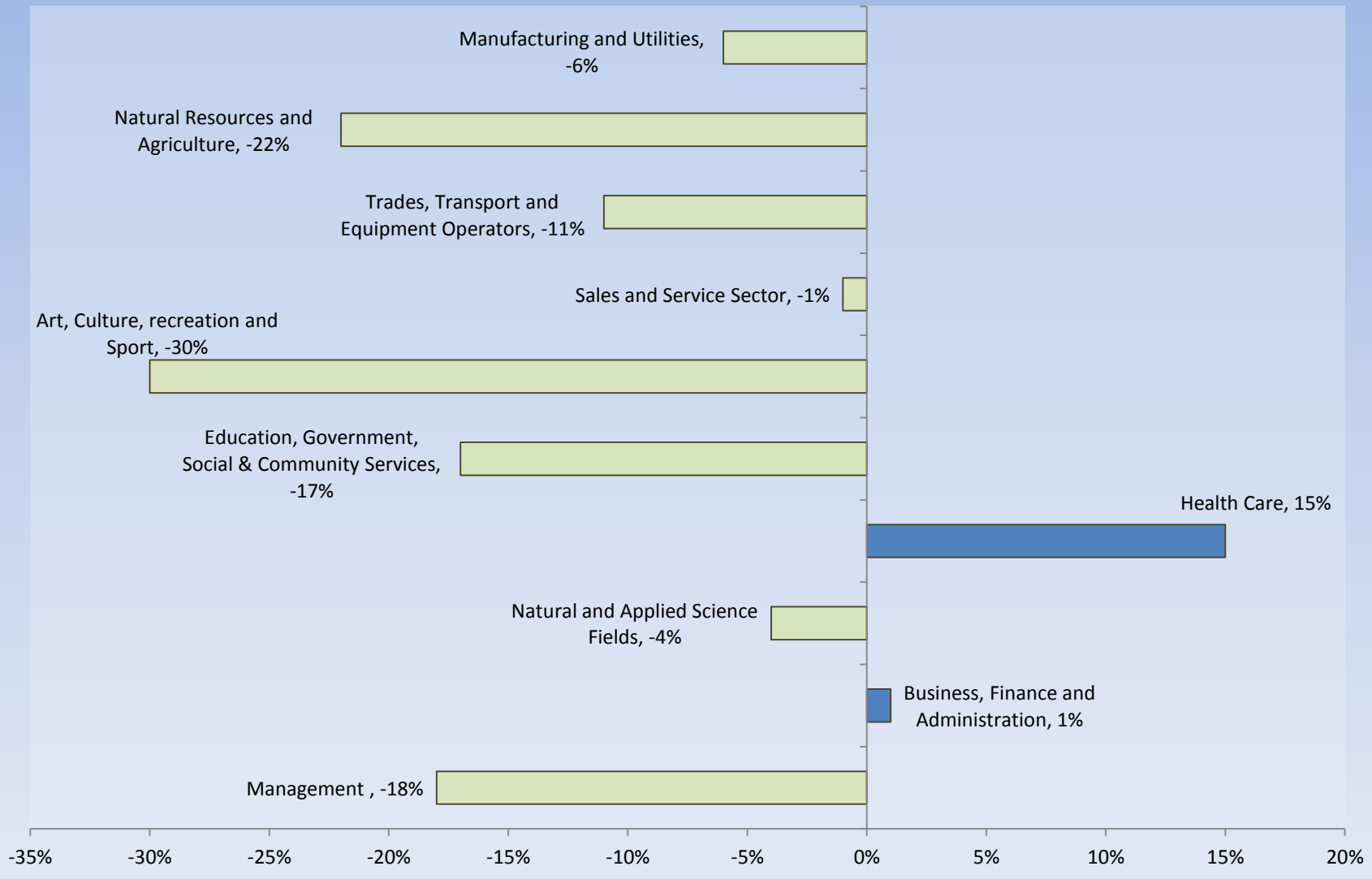
Income Characteristics of Economically Active Population	1996	2001	2006	2011	Change From Previous Period
Individual Income					
Average Income	\$39,728.50	\$46,064.50	\$74,881.00	\$54,323.00	↓ (-27%)
Median Income	\$26,979.00	\$28,332.00	\$30,699.00	\$37,158.00	↑ 21%
Income by Gender					
Average Income – Male	\$51,626.00	\$60,442.00	\$116,467.00	\$67,097.00	↓ (-42%)
Average Income - Female	\$27,831.00	\$31,687.00	\$38,731.00	\$43,129.00	↑ 11%
Median Income – Male	\$33,695.00	\$32,983.00	\$37,173.00	\$37,158.00	↓ (<-1%)
Median Income - Female	\$20,263.00	\$23,682.00	\$26,561.00	\$33,587.00	↑ 26%
Household Income					
Average Household Income	\$67,679.00	\$79,323.00	\$134,758.00	\$97,684.00	↓ (-28%)
Median Household Income	\$47,875.00	\$51,465.00	\$59,163.00	\$61,016.00	↑ 3%
Family Income					
Average Family Income	\$91,564.99	\$116,991.00	\$206,014.00	\$137,351.00	↓ (-33%)
Median Family Income	\$68,918.00	\$78,154.00	\$97,153.00	\$107,135.00	↑ 10%
Lone-Parent Families					
Average Family Income	N.A.	N.A.	N.A.	\$73,333.00	
Median Family Income	N.A.	N.A.	N.A.	\$62,102.00	

Data Note: Income figures based on previous reporting year (1995, 2000, 2005 & 2010).



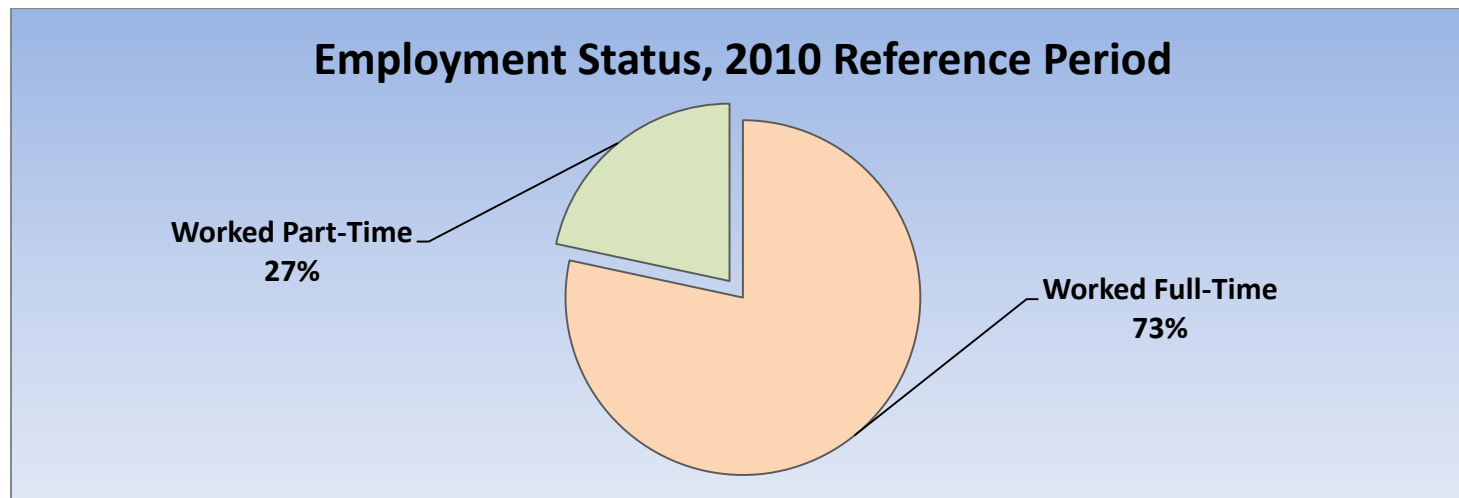
Labour Force by National Occupational Classification	1996	2001	2006	2011	Change From Previous Period	As a % of Labour Force
Management	520	500	570	465	↓ (-18%)	6%
Business, Finance and Administration	740	705	715	725	↑ 1%	9%
Natural and Applied Science Fields	185	285	265	255	↓ (-4%)	3%
Health Care	560	580	500	575	↑ 15%	7%
Education, Government, Social & Community Services	980	1,105	1,180	980	↓ (-17%)	12%
Art, Culture, recreation and Sport	310	250	270	190	↓ (-30%)	2%
Sales and Service Sector	1,085	860	910	900	↓ (-1%)	11%
Trades, Transport and Equipment Operators	190	260	230	205	↓ (-11%)	2%
Natural Resources and Agriculture	60	80	45	35	↓ (-22%)	<1%
Manufacturing and Utilities	105	105	85	80	↓ (-6%)	1%

Employment Trends by Occupational Breakout, 2006-2011



Class of Worker	1996	2001	2006	2011	Change From Previous Period	As a % Work Force
Employee	4,050	4,110	4,050	3,855	↓ (-5%)	87%
Female	2,120	2,085	2,140	1,980		
Male	1,930	2,025	1,910	1,875		
Self-Employed	680	640	775	555	↓ (-28%)	17%
Female	260	240	310	230		
Male	420	400	465	325		

Employment Status	1996	2001	2006	2011	Change From Previous Period	As a % of Active Labour Force
Worked Full-Time in 2010	N.A.	N.A.	N.A.	3,195	N.A.	73%
Worked Part-Time in 2010	N.A.	N.A.	N.A.	1,165	N.A.	27%



Mode of Transport to Work	1996	2001	2006	2011	Change From Previous Period	As a % of Neighbourhood
Automobile -As a Driver	2,590	2,375	2,485	2,375	↓ (-4%)	64%
Car-Pool	245	205	375	205	↓ (-45%)	6%
Public Transportation	610	325	410	385	↓ (-6%)	10%
Walked or Bicycled	895	985	785	710	↓ (-10%)	19%
Other Modes	20	20	25	50	↑ 100%	1%
Median Commuting Duration	N.A.	N.A.	N.A.	15.6		

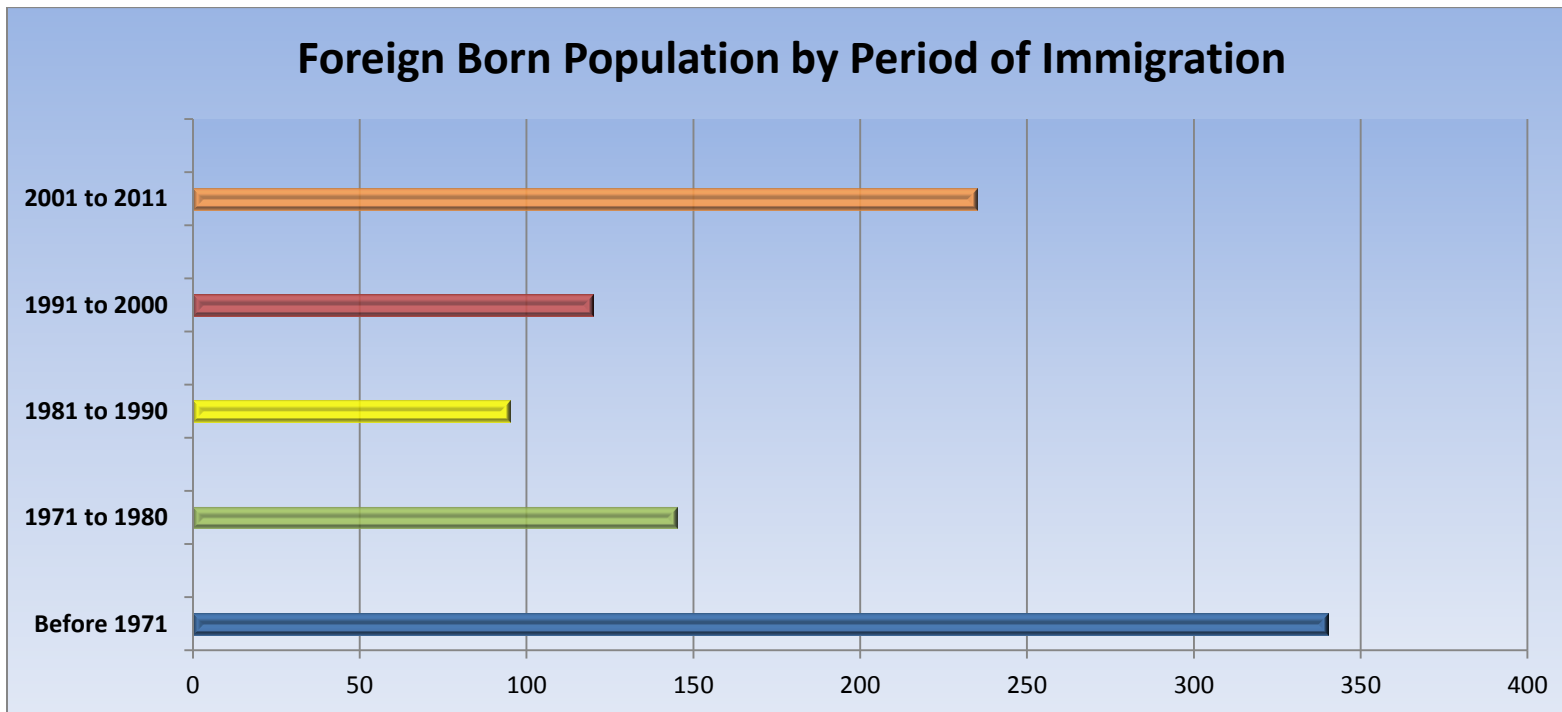
Place of Work	1996	2001	2006	2011	Change From Previous Period	As a % of Neighbourhood
Worked at Home	400	455	465	190	↓ (-59%)	5%
Worked at a Fixed Address	3,790	3,625	3,720	3,400	↓ (-9%)	87%
No Fixed Workplace Address	245	320	370	320	↓ (-14%)	8%
Worked within Municipality	3,435	3,305	3,340	N.A.	—	
Work in a different Municipality	275	325	380	N.A.	—	
Worked outside Canada	0	50	35	20	↓ (-43%)	<1%

Mobility/Migration Status	1996	2001	2006	2011	Change From Previous Period	As a % of Neighbourhood
Lived at the same address 5 years ago	4,610	4,525	4,600	4,135	↓	56%
Moved sometime with the last 5 years	3,485	3,785	3,230	3,250	↑ <1%	44%
Internal Migrants	1,125	1,405	1,145	1,160	↑ 1%	85%
- Intra-provincial	1,015	1,240	990	1,030	↑	
- Inter-provincial	105	165	155	130	↓	
External Migrants	205	375	270	210	↓ 22%	15%
Lived at the same address 1 years ago	6,890	6,860	6,795	6,435	↓ (-5%)	84%
Moved sometime with the last year	1,555	1,795	1,320	1,230	↓ (-7%)	16%
Internal Migrants	305	575	350	275	↓ (-21%)	80%
- Intra-provincial	235	510	320	255	↓ (-20%)	
- Inter-provincial	65	70	35	20	↓ (-43%)	
External Migrants	125	190	135	70	↓ (-48%)	20%

Place of Birth	1996	2001	2006	2011	Change From Previous Period		As a % of Neighbourhood
Total Immigrant Population	N.A.	N.A.	1,350	945	↓	(-30%)	11%
Place of Birth by Continent							
North America (US only)	N.A.	N.A.	260	145	↓	(-44%)	2%
Africa	N.A.	N.A.	10	55	↑	450%	<1%
Asia	N.A.	N.A.	210	255	↑	21%	3%
Caribbean	N.A.	N.A.	30	0	↓	(-100%)	0%
Central and South America	N.A.	N.A.	N.A.	0	—	—	—
Europe	N.A.	N.A.	770	415	↓	(-46%)	5%
Recent Immigration by Continent, 2006-2011							
Recent Immigrants	N.A.	N.A.	125	155	↑	24%	2%
North America (US only)	N.A.	N.A.	15	20	↑	25%	<1%
Africa	N.A.	N.A.	0	35	↑	100%	<1%
Asia	N.A.	N.A.	70	55	↓	(-21%)	<1%
Caribbean	N.A.	N.A.	0	0	—	—	—
Central and South America	N.A.	N.A.	20	0	↓	(-100%)	—
Europe	N.A.	N.A.	10	25	↑	150%	<1%

Immigration by Place of Birth	1996	2001	2006	2011	Change From Previous Period	As a % of Neighbourhood
1. United States	N.A.	N.A.	N.A.	145	— —	2%
2. United Kingdom	N.A.	N.A.	N.A.	125	— —	2%
3. Iran	N.A.	N.A.	N.A.	100	— —	1%
N.A.						

Period of Immigration	1996	2001	2006	2011	Change From Previous Period	As a % of Neighbourhood
Before 1971	N.A.	N.A.	690	340	↓	4%
1971 to 1980	N.A.	N.A.	155	145	↓	2%
1981 to 1990	N.A.	N.A.	190	95	↓	1%
1991 to 2000	N.A.	N.A.	190	120	↓	1%
2001 to 2011	N.A.	N.A.	N.A.	235	—	3%



Language	1996	2001	2006	2011	Change From Previous Period		As a % of Neighbourhood
Knowledge of Official Languages							
English Only	7,455	7,045	6,910	6,695	↓	(-3%)	81%
French Only	0	0	0	5	↑	100%	<1%
English and French	1,075	1,660	1,265	1,025	↓	(-19%)	12%
Neither English or French	10	10	15	25	↑	67%	<1%
Language Spoken Most Often at Home							
English	8,170	7,985	7,765	7,375	↓	(-5%)	89%
French	15	10	40	50	↑	25%	1%
Non-Official Language	255	125	365	265	↓	(-27%)	3%
Mother Tongue *							
English	7,535	7,585	6,995	6,725	↓	(-4%)	81%
French	100	140	110	105	↓	(-5%)	1%
Non-Official Language	870	945	1,060	805	↓	(24%)	10%

* Statistics Canada defines 'mother tongue' as the first language learned in childhood and still understood by the individual at the time of census reporting.

Non-Official Languages Spoken Top 10 Reported	1996	2001	2006	2011	Change From Previous Period	As a % of Neighbourhood
1. German	N.A.	N.A.	N.A.	200		2%
2. Polish	N.A.	N.A.	N.A.	100		1%
3. Spanish	N.A.	N.A.	N.A.	100		1%
4. Dutch	N.A.	N.A.	N.A.	70		1%
5. Italian	N.A.	N.A.	N.A.	60		1%
N.A.	N.A.	N.A.	N.A.	N.A.		
NA.	N.A.	N.A.	N.A.	N.A.		
N.A.	N.A.	N.A.	N.A.	N.A.		
N.A.	N.A.	N.A.	N.A.	N.A.		
N.A.	N.A.	N.A.	N.A.	N.A.		

Religious Identification	1996	2001	2006	2011	Change From Previous Period	As a % of Neighbourhood
Buddhist	N.A.	N.A.	N.A.	35		<1%
Christian	N.A.	N.A.	N.A.	4,575		55%
Anglican	N.A.	N.A.	N.A.	755		9%
Baptist	N.A.	N.A.	N.A.	120		1%
Catholic	N.A.	N.A.	N.A.	1,710		21%
Orthodox	N.A.	N.A.	N.A.	75		1%
Lutheran	N.A.	N.A.	N.A.	120		1%
Pentecostal	N.A.	N.A.	N.A.	0		—
Presbyterian	N.A.	N.A.	N.A.	275		3%
United Church	N.A.	N.A.	N.A.	950		11%
Other Christian	N.A.	N.A.	N.A.	570		7%
Hindu	N.A.	N.A.	N.A.	0		—
Jewish	N.A.	N.A.	N.A.	175		2%
Muslim	N.A.	N.A.	N.A.	75		1%
Sikh	N.A.	N.A.	N.A.	0		—
Aboriginal Spirituality	N.A.	N.A.	N.A.	0		—

Notes:

- (1) Source Data –Statistics Canada. 1996-2011 Census Data, Customized Profiles. Ottawa, Canada
- (2) Data also derived from Statistics Canada’s National Household Survey (NHS)
- (3) Customized Community and Neighbourhood Profiles tabulated and compiled by the City of London’s Planning Division –Policy Planning and Research Section.