



Lambeth Neighbourhood Profile

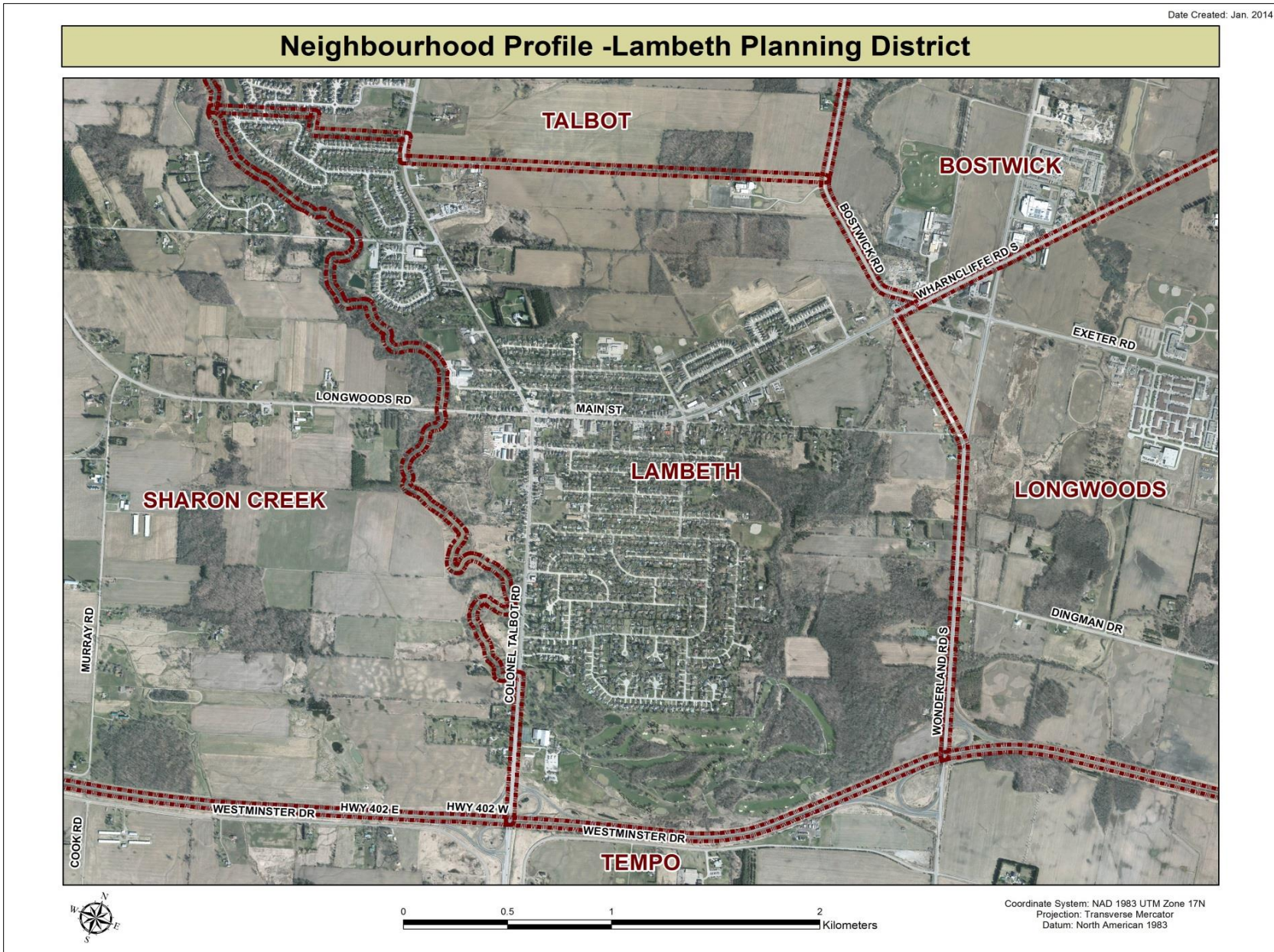
For further information contact:

John-Paul Sousa

Planning Research Analyst

Direct: (519) 661-2500 ext. 5989 | email: jpsousa@london.ca

Date Created: Jan. 2014

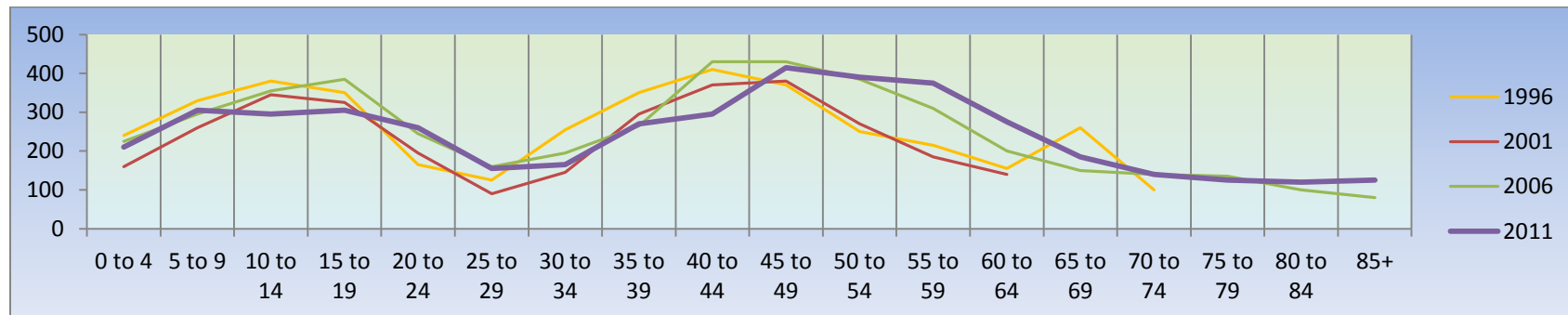


Population Characteristics & Age Distribution

Lambeth Neighbourhood	1996	2001	2006	2011	Change From Previous Period	
Total Population	4,165	3,635	4,465	4,410	↓	(-1%)
Female	2,080	1,850	2,285	2,250	↓	(-1%)
Male	2,085	1,785	2,180	2,165	↓	(-1%)

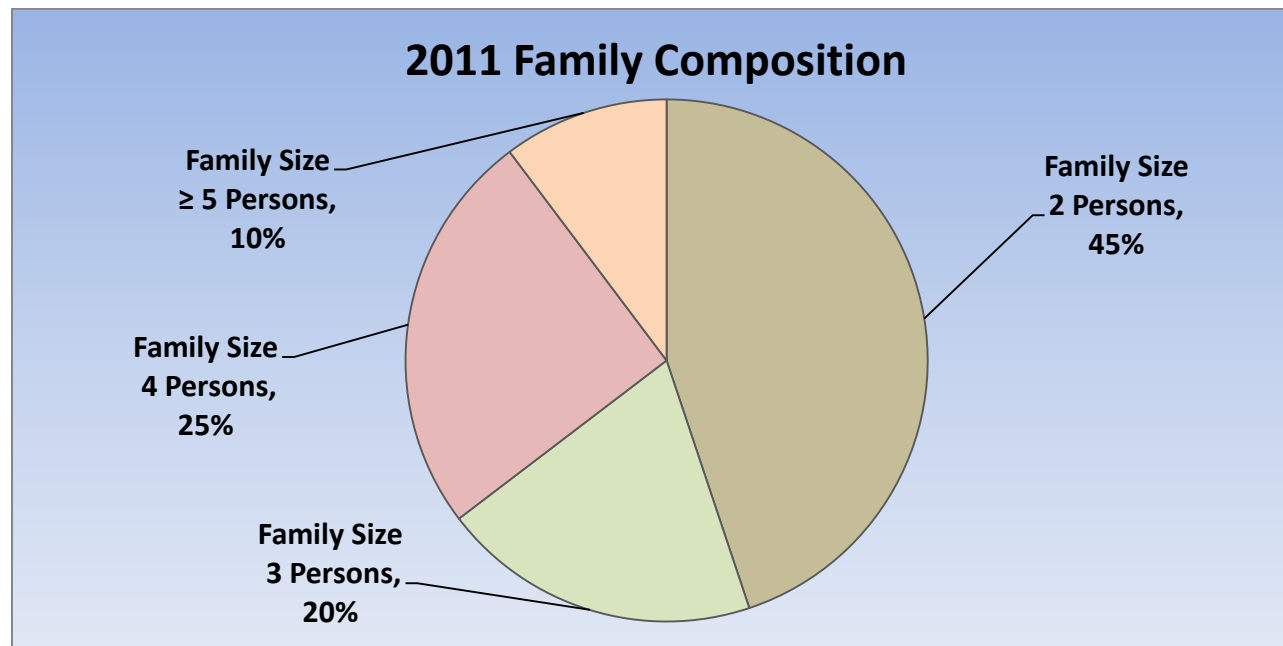
Age Structure	1996	2001	2006	2011	Change From Previous Period		As a % of Neighbourhood
0-19	1,300	1,090	1,260	1,120	↓	(-11%)	25%
0 to 4	240	160	225	210	↓	(-7%)	5%
5 to 9	330	260	295	305	↑	3%	7%
10 to 14	380	345	355	295	↓	(-17%)	7%
15 to 19	350	325	385	310	↑	19%	7%
20-44	1,305	1,095	1,295	1,150	↓	(-11%)	26%
45-64	990	975	1,325	1,445	↑	9%	33%
65+	575	475	605	680	↑	12%	15%
Median Age	N.A.	N.A.	N.A.	43.8			

2011 Census Age Cohort Breakout	Male	Female	Total	As a % of Neighbourhood
0 to 4	110	100	210	4.76%
5 to 9	165	140	305	6.92%
10 to 14	130	165	295	6.69%
15 to 19	155	150	305	6.92%
20 to 24	140	120	260	5.90%
25 to 29	80	75	155	3.51%
30 to 34	80	85	165	3.74%
35 to 39	125	145	270	6.12%
40 to 44	150	145	295	6.69%
45 to 49	205	210	415	9.41%
50 to 54	190	200	390	8.84%
55 to 59	180	195	375	8.50%
60 to 64	135	140	275	6.24%
65 to 69	105	80	185	4.20%
70 to 74	75	65	140	3.17%
75 to 79	50	75	125	2.83%
80 to 84	60	60	120	2.72%
85+	30	95	125	2.83%
Total	2,165	2,245	4,410	



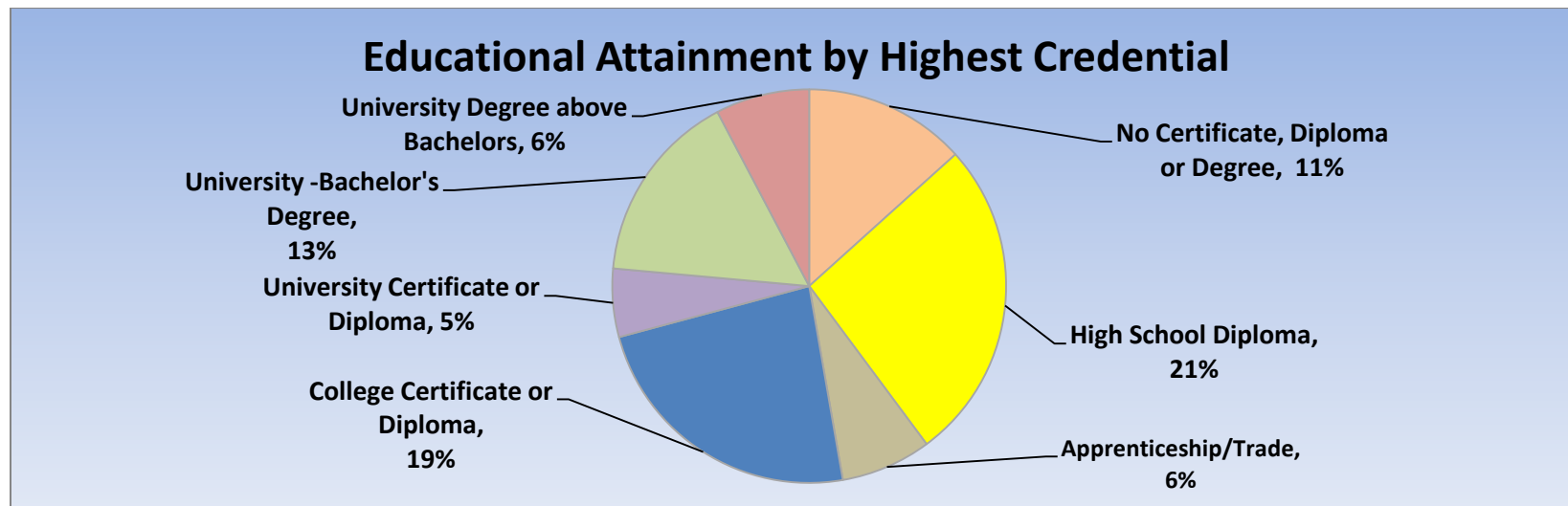
Marital Status	1996	2001	2006	2011	Change From Previous Period	As a % of Neighbourhood
Single	690	675	875	775	↓ (-11%)	18%
Married	2,120	1,840	2,245	2,205	↓ (-2%)	50%
Common-Law	120	115	170	195	↑ 15%	4%
Divorced	135	130	195	145	↓ (-26%)	3%
Separated	90	55	70	70	— —	2%
Widowed	190	155	200	215	↑ 8%	5%
Citizenship, Immigration & Ethnic Identity	1996	2001	2006	2011	Change From Previous Period	As a % of Neighbourhood
Citizenship						
Canadian Citizens	4,040	3,545	4,390	4,280	↓ (-2%)	97%
Non-Canadian Citizens	125	85	75	50	↓ (-33%)	1%
Immigration Status						
Canadian Born Population	3,425	3,095	3,885	3,675	↓ (-5%)	83%
Foreign Born Population	735	530	580	630	↑ 9%	14%
Visible Minority Population	100	55	140	165	↑ 18%	4%
Aboriginal Identity Population	65	25	20	20	— —	<1%

Family Composition	1996	2001	2006	2011	Change From Previous Period	As a % of Neighbourhood
Number of Census Families	1,200	1,065	1,315	1,310	↓ (-1%)	
Family Size - 2 Persons	460	435	565	590	↑ 4%	45%
Family Size - 3 Persons	235	210	235	260	↑ 11%	20%
Family Size - 4 Persons	330	270	350	330	↓ (-6%)	25%
Family Size - ≥ 5 Persons	175	150	170	135	↓ (-21%)	10%
Census Family - Average Size	3.20	3.20	3.10	3.00	↓	



Family Structure & Number of Children	1996	2001	2006	2011	Change From Previous Period	
Married Couples	1,060	910	1,120	1,090	↓	(-3%)
Without Children	365	360	455	460	↑	1%
With Children	665	550	670	630	↓	(-6%)
Common-Law	60	55	85	95	↑	12%
Without Children	45	40	45	55	↑	22%
With Children	15	20	35	45	↑	29%
Lone Parent Families	85	95	110	125	↑	14%
Female Headed	50	65	85	95	↑	12%
1 Child	0	20	45	55	↑	22%
2 Children	30	35	30	30	—	—
≥ 3 Children	20	10	10	10	—	—
Male Headed	35	35	30	25	↓	(-17%)
1 Child	20	20	20	20	—	—
2 Children	15	10	10	5	↓	(-50%)
≥ 3 Children	0	10	0	N.A.		

Educational Attainment by Credential	1996	2001	2006	2011	Change From Previous Period	As a % of Neighbourhood
No Certificate, Diploma or Degree	N.A.	N.A.	365	475	↑ 30%	11%
High School Diploma or Equivalent	N.A.	N.A.	1,115	945	↓ (-15%)	21%
Apprenticeship, or Trade Certificate	130	220	270	265	↓ (-2%)	6%
College Certificate or Diploma	N.A.	775	820	840	↑ 2%	19%
University Certificate or Diploma	N.A.	N.A.	50	200	↑ 300%	5%
University -Bachelor's Degree	N.A.	N.A.	140	565	↑ 303%	13%
University Degree above bachelor level (M.A. or PhD)	N.A.	N.A.	85	275	↑ 223%	6%

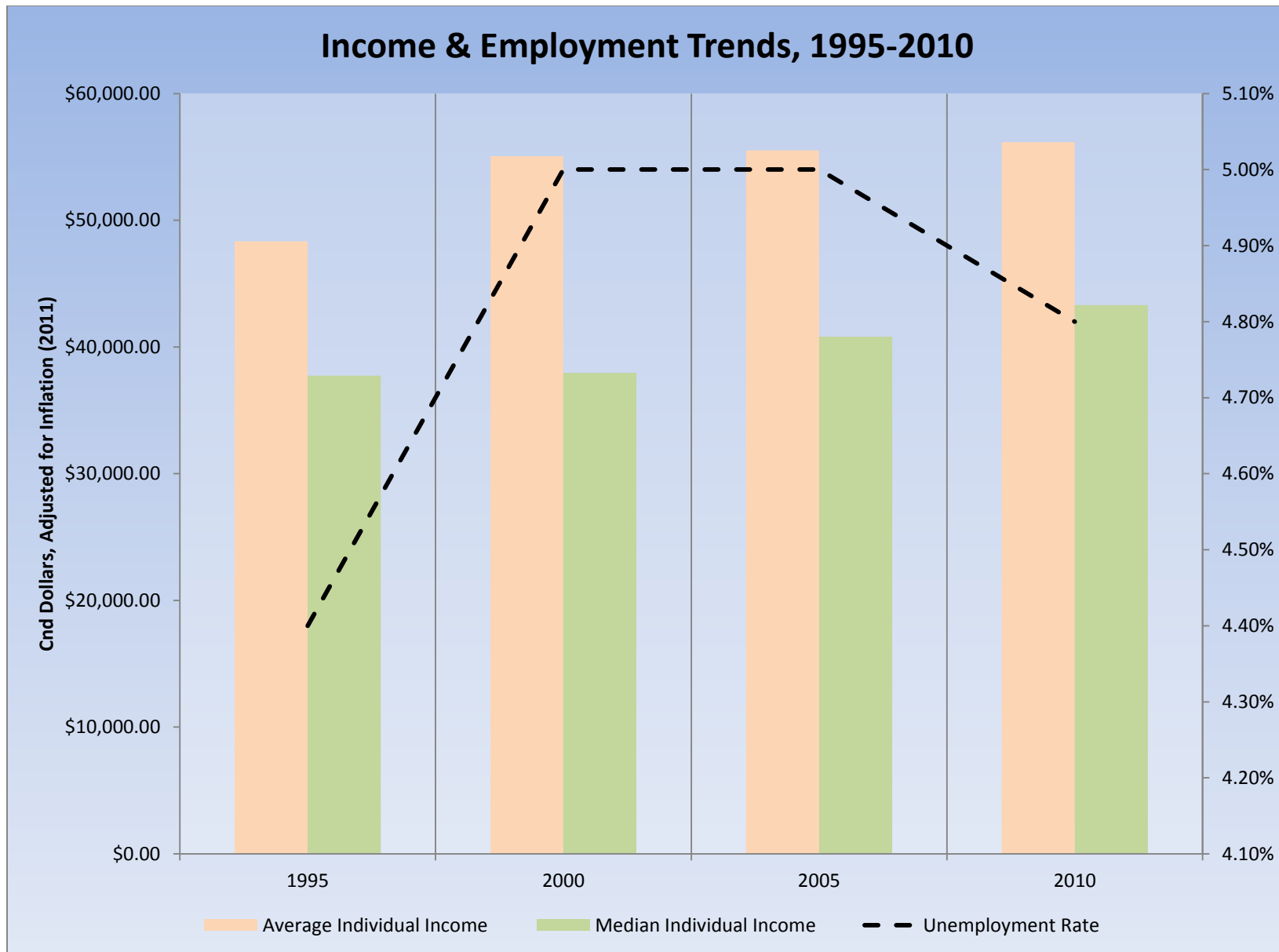


Housing by Structure Type & Tenure	1996	2001	2006	2011	Change From Previous Period	As a % of Neighbourhood
Total Occupied Dwellings	1,445	1,255	1,565	1,580	1%	
Single-Detached	1,345	1,185	1,440	1,470	2%	94%
Semi-Detached	10	15	25	15	(-40%)	1%
Row House	0	0	20	20		1%
Duplex	25	15	30	30		2%
Apartment < 5 Storeys	45	50	50	50		3%
Apartment ≥ 5 Storeys	0	0	10	N.A.		
Number of Owned Dwellings	1,260	1,145	1,430	1,475	3%	
Owned as a % of Total	88%	91%	92%	93%		
Number of Rented Dwellings	180	110	130	120		
Rented as a % of Total	12%	9%	8%	7%		
Average # of Rooms	8.30	8.20	8.3	8.4		
Average # of Bedrooms	3.30	3.20	3.2	N.A.		
Average Gross Rent	\$771.00	\$611.00	\$729.00	\$1,017.00	40%	
Average Value of Dwelling	\$218,167.00	\$215,904.00	\$304,505.00	\$340,707.00	12%	

Labour Market Indicators	1996	2001	2006	2011	Change From Previous Period	As a % of Neighbourhood
Total Labour Force ≥ 15 years	2,255	1,960	2,570	2,405	↓ (-6%)	
Female	1,200	910	1,225	1,180	↓ (-4%)	49%
Male	1,055	1,050	1,340	1,335	↓ (-1%)	56%
Unemployment Rate	4.40%	5%	5%	4.80%	↓	
Female	5.20%	6%	4%	4.20%	↑	
Male	3.80%	4.80%	5.20%	4.90%	↓	
Employment Rate	N.A.	N.A.	N.A.	68%		
Participation Rate	70%	69%	73%	71%	↓	
Female	65%	63%	68%	67%	↓	
Male	75%	74.50%	76.60%	74%	↓	
Labour Force by Sector						
Primary (Agriculture & Resources)	60	35	40	70	↑ 75%	3%
Secondary (Construction & Manufacturing)	495	485	505	305	↓ (-40%)	12%
Tertiary Services	1,670	1,455	1,980	2,115	↑ 7%	85%

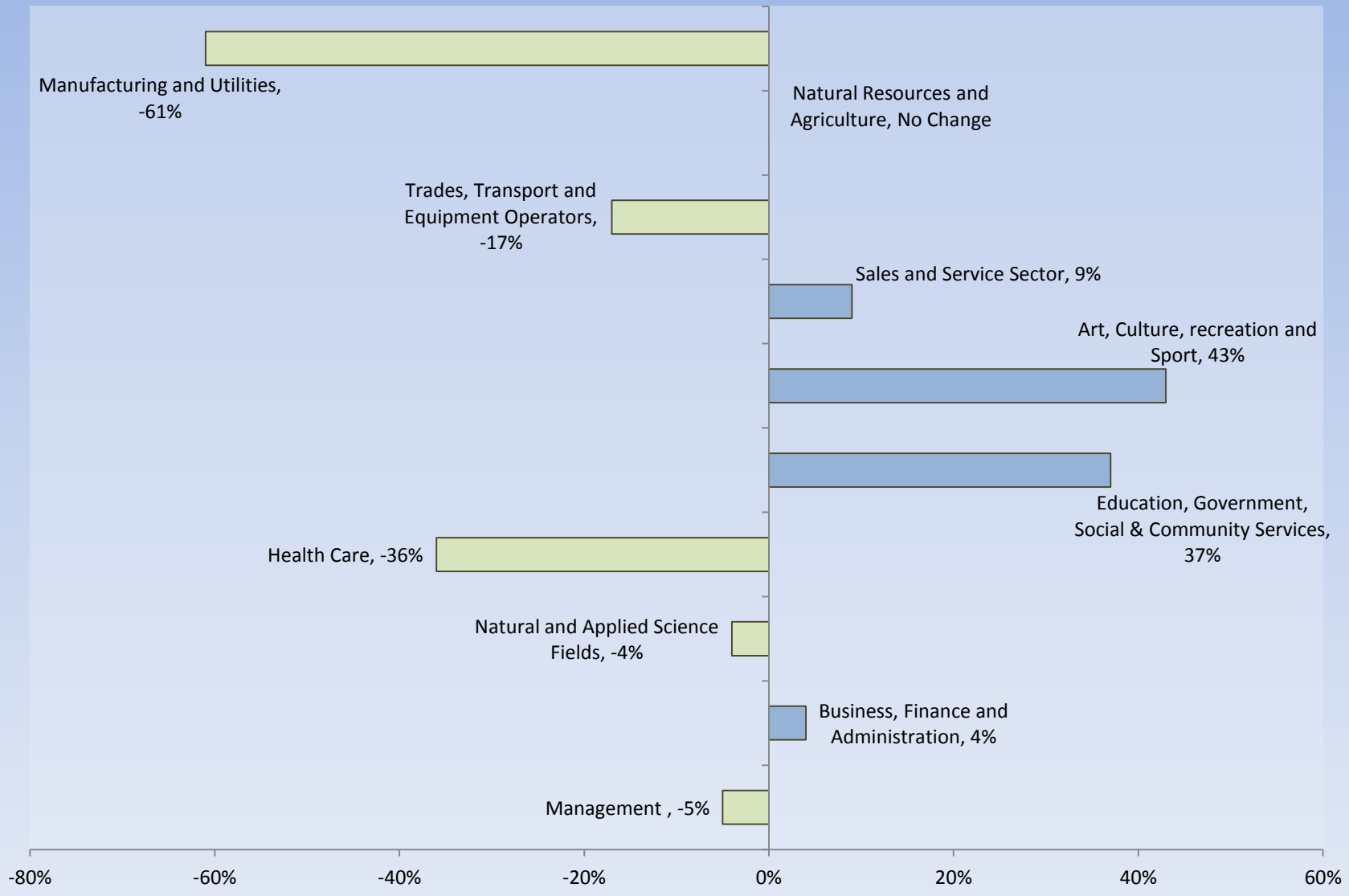
Income Characteristics of Economically Active Population	1996	2001	2006	2011	Change From Previous Period	
Individual Income						
Average Income	\$35,383.00	\$43,882.50	\$49,534.00	\$54,483.00	↑	10%
Median Income	\$27,619.00	\$30,253.50	\$36,411.00	\$42,004.00	↑	15%
Income by Gender						
Average Income – Male	\$46,430.00	\$53,549.00	\$60,520.00	\$64,931.00	↑	7%
Average Income - Female	\$24,336.00	\$34,216.00	\$38,600.00	\$44,088.00	↑	14%
Median Income – Male	\$35,610.00	\$39,332.00	\$45,560.00	\$52,090.00	↑	14%
Median Income - Female	\$19,629.00	\$21,175.00	\$30,337.00	\$34,315.00	↑	13%
Household Income						
Average Household Income	\$74,743.00	\$95,127.00	\$118,578.00	\$115,698.00	↓	(-2%)
Median Household Income	\$62,956.00	\$73,301.00	\$96,864.00	\$104,293.00	↑	8%
Family Income						
Average Family Income	\$83,460.00	\$101,210.00	\$108,194.00	\$129,685.00	↑	20%
Median Family Income	\$70,999.00	\$84,142.00	\$88,045.00	\$115,554.00	↑	31%
Lone-Parent Families						
Average Family Income	N.A.	N.A.	N.A.	\$83,479.00	—	—
Median Family Income	N.A.	N.A.	N.A.	\$90,451.00	—	—

Data Note: Income figures based on previous reporting year (1995, 2000, 2005 & 2010).



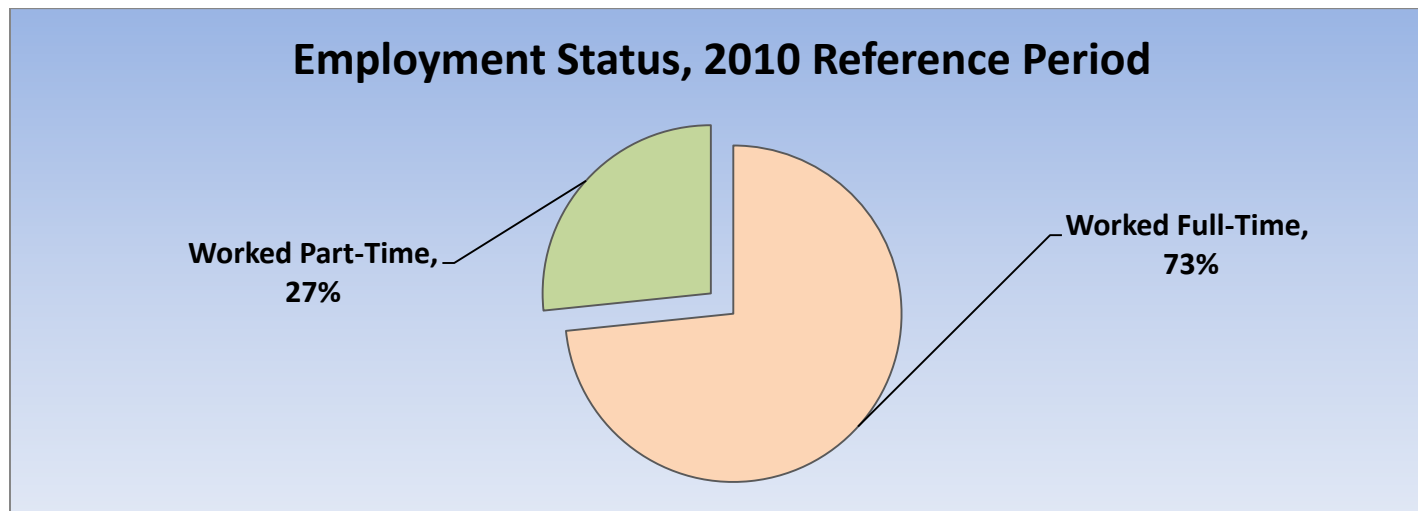
Labour Force by National Occupational Classification	1996	2001	2006	2011	Change From Previous Period	As a % of Labour Force
Management	315	355	410	390	↓ (-5%)	16%
Business, Finance and Administration	510	340	445	465	↑ (4%)	19%
Natural and Applied Science Fields	90	120	140	135	↓ (-4%)	5%
Health Care	160	175	225	145	↓ (-36%)	6%
Education, Government, Social & Community Services	120	145	255	350	↑ 37%	14%
Art, Culture, recreation and Sport	45	40	35	50	↑ 43%	2%
Sales and Service Sector	550	420	530	580	↑ 9%	23%
Trades, Transport and Equipment Operators	265	200	295	245	↓ (-17%)	10%
Natural Resources and Agriculture	60	50	70	70	— —	3%
Manufacturing and Utilities	115	20	155	60	↓ (-61%)	2%

Employment Trends by Occupational Breakout, 2006-2011



Class of Worker	1996	2001	2006	2011	Change From Previous Period	As a % Neighbourhood
Employee	2,045	1,680	2,205	2,165	↓ (-2%)	91%
Female	970	815	1,090	1,070		
Male	1,075	865	1,115	1,100		
Self-Employed	330	280	335	225	↓ (-33%)	9%
Female	115	100	115	225		
Male	115	180	220	95		

Employment Status	1996	2001	2006	2011	Change From Previous Period	As a % of Active Labour Force
Worked Full-Time in 2010	N.A.	N.A.	N.A.	1,805	N.A.	73%
Worked Part-Time in 2010	N.A.	N.A.	N.A.	655	N.A.	27%



Mode of Transport to Work	1996	2001	2006	2011	Change From Previous Period	As a % of Neighbourhood
Automobile -As a Driver	1,695	1,480	2,015	1,945	↓ (-3%)	88%
Car-Pool	70	65	130	145	↑ 12%	7%
Public Transportation	0	15	0	60	↑ 100%	3%
Walked or Bicycled	125	55	65	65	— —	3%
Other Modes	25	15	10	0	↓ (-100%)	0
Median Commuting Duration	N.A.	N.A.	N.A.	19 min		

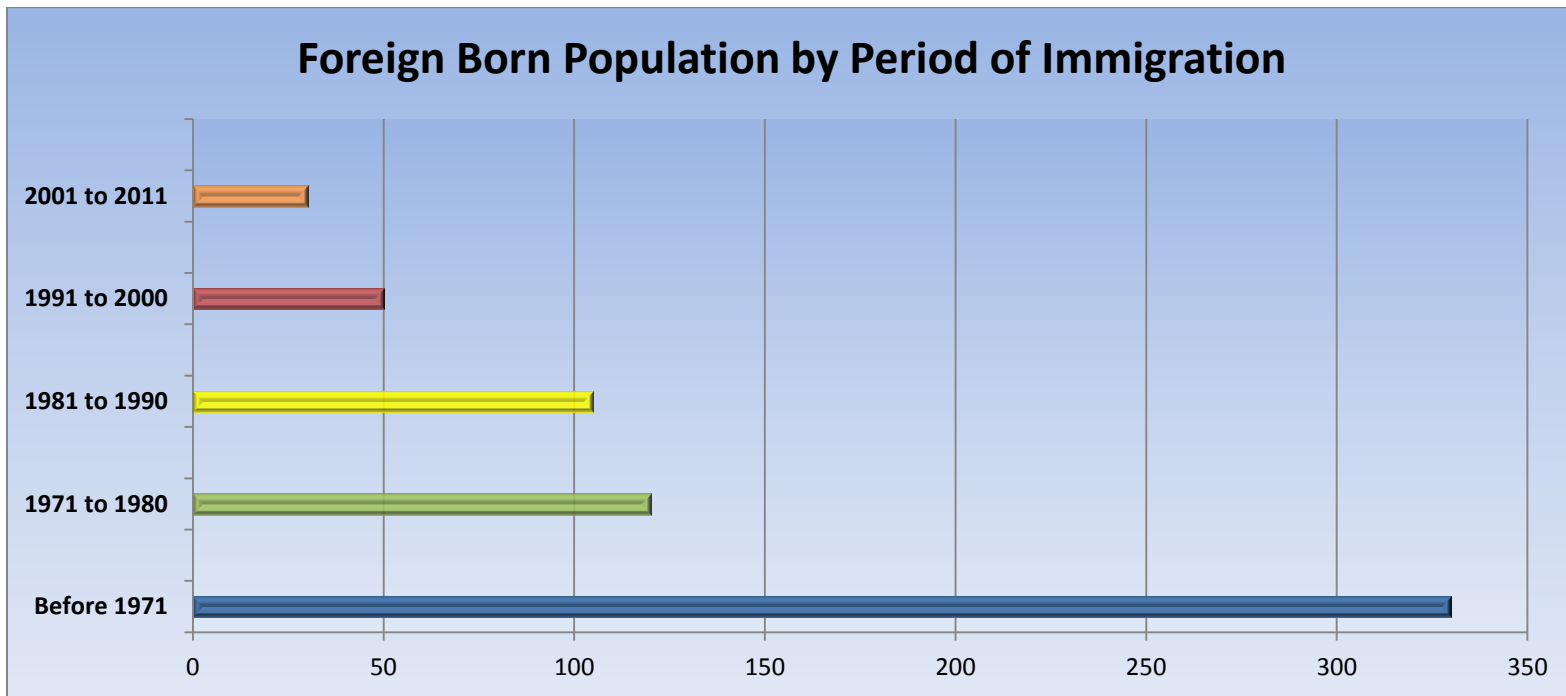
Place of Work	1996	2001	2006	2011	Change From Previous Period	As a % of Neighbourhood
Worked at Home	230	215	225	180	↓ (-20%)	8%
Worked at a Fixed Address	1,660	1,440	2,035	1,995	↓ (-2%)	83%
No Fixed Workplace Address	200	190	185	215	↑ 16%	9%
Worked within Municipality	1,450	1,195	1,715	N.A.	— —	
Work in a different Municipality	190	245	320	N.A.	— —	
Worked outside Canada	10	10	10	0	↓ (-100%)	0%

Mobility/Migration Status	1996	2001	2006	2011	Change From Previous Period	As a % of Neighbourhood
Lived at the same address 5 years ago	2,765	2,320	2,830	2,820	↓	68%
Moved sometime with the last 5 years	1,165	1,145	1,405	1,330	↓ (-5%)	32%
Internal Migrants	290	375	315	345	↑ (10%)	93%
- Intra-provincial	275	355	275	250	↓	
- Inter-provincial	20	20	45	90	↑	
External Migrants	70	20	45	25	↓ (-44%)	7%
Lived at the same address 1 years ago	3,750	3,245	4,040	4,035	↓ (<-1%)	94%
Moved sometime with the last year	380	370	370	270	↓ (-27%)	6%
Internal Migrants	140	150	105	35	↓ (-67%)	47%
- Intra-provincial	105	125	100	30	↓ (-70%)	
- Inter-provincial	40	25	0	0	— —	
External Migrants	70	15	55	40	↓ (-27%)	53%

Place of Birth	1996	2001	2006	2011	Change From Previous Period		As a % of Neighbourhood
Total Immigrant Population	N.A.	N.A.	580	630	↑	9%	14%
Place of Birth by Continent							
North America (US only)	N.A.	N.A.	70	15	↓	(-79%)	<1%
Africa	N.A.	N.A.	15	0	↓	(-100%)	0%
Asia	N.A.	N.A.	35	85	↑	59%	2%
Caribbean	N.A.	N.A.	10	0	↓	(-100%)	0%
Central and South America	N.A.	N.A.	10	0	↓	(-100%)	0%
Europe	N.A.	N.A.	455	490	↑	8%	11%
Recent Immigration by Continent, 2006-2011							
Recent Immigrants	N.A.	N.A.	15	0	↓	(-100%)	0%
North America (US only)	N.A.	N.A.	N.A.	N.A.			
Africa	N.A.	N.A.	N.A.	N.A.			
Asia	N.A.	N.A.	N.A.	N.A.			
Caribbean	N.A.	N.A.	N.A.	N.A.			
Central and South America	N.A.	N.A.	N.A.	N.A.			
Europe	N.A.	N.A.	N.A.	N.A.			

Immigration by Place of Birth	1996	2001	2006	2011	Change From Previous Period		As a % of Neighbourhood
1. United Kingdom	N.A.	N.A.	190	230	↑	21%	5%
2. Netherlands	N.A.	N.A.	70	50	↓	29%	1%
N.A.							

Period of Immigration	1996	2001	2006	2011	Change From Previous Period		As a % of Neighbourhood
Before 1971	N.A.	N.A.	240	330	↑	38%	7%
1971 to 1980	N.A.	N.A.	115	120	↑	4%	3%
1981 to 1990	N.A.	N.A.	60	105	↑	75%	2%
1991 to 2000	N.A.	N.A.	50	50	—	—	1%
2001 to 2011	N.A.	N.A.	N.A.	30	—	—	1%



Language	1996	2001	2006	2011	Change From Previous Period		As a % of Neighbourhood
Knowledge of Official Languages							
English Only	4,020	3,480	4,165	4,135	↓	(<-1%)	94%
French Only	0	0	0	0	—	—	0%
English and French	135	145	295	275	↓	(-7%)	6%
Neither English or French	10	10	0	5	↑	100%	<1%
Language Spoken Most Often at Home							
English	4,050	3,405	3,990	4,285	↑	7%	97%
French	0	0	45	10	↓	(-78%)	<1%
Non-Official Language	115	20	420	70	↓	(-83%)	2%
Mother Tongue *							
English	3,655	3,230	3,990	3,960	↓	(<-1%)	90%
French	10	35	45	35	↓	(-22%)	1%
Non-Official Language	495	370	420	380	↓	(-9%)	9%

* Statistics Canada defines 'mother tongue' as the first language learned in childhood and still understood by the individual at the time of census reporting.

Non-Official Languages Spoken Top 10 Reported	1996	2001	2006	2011	Change From Previous Period	As a % of Neighbourhood
1. Italian	N.A.	N.A.	190	70	↓ (-63%)	2%
2. Dutch	N.A.	N.A.	90	55	↓ (-39%)	1%
3. German	N.A.	N.A.	45	55	↑ 22%	1%

Religious Identification	1996	2001	2006	2011	Change From Previous Period	As a % of Neighbourhood
Buddhist	N.A.	N.A.	N.A.	0		0%
Christian	N.A.	N.A.	N.A.	3,340		76%
Anglican	N.A.	N.A.	N.A.	385		9%
Baptist	N.A.	N.A.	N.A.	155		4%
Catholic	N.A.	N.A.	N.A.	1,220		28%
Orthodox	N.A.	N.A.	N.A.	25		1%
Lutheran	N.A.	N.A.	N.A.	40		1%
Pentecostal	N.A.	N.A.	N.A.	45		1%
Presbyterian	N.A.	N.A.	N.A.	105		2%
United Church	N.A.	N.A.	N.A.	815		18%
Other Christian	N.A.	N.A.	N.A.	555		13%
Hindu	N.A.	N.A.	N.A.	0		0%
Jewish	N.A.	N.A.	N.A.	0		0%
Muslim	N.A.	N.A.	N.A.	15		<1%
Sikh	N.A.	N.A.	N.A.	0		0%
Aboriginal Spirituality	N.A.	N.A.	N.A.	0		0%

Notes:

- (1) Source Data –Statistics Canada. 1996-2011 Census Data, Customized Profiles. Ottawa, Canada
- (2) Data also derived from Statistics Canada’s National Household Survey (NHS)
- (3) Customized Community and Neighbourhood Profiles tabulated and compiled by the City of London’s Planning Division –Policy Planning and Research Section.