



# Hyde Park Neighbourhood Profile

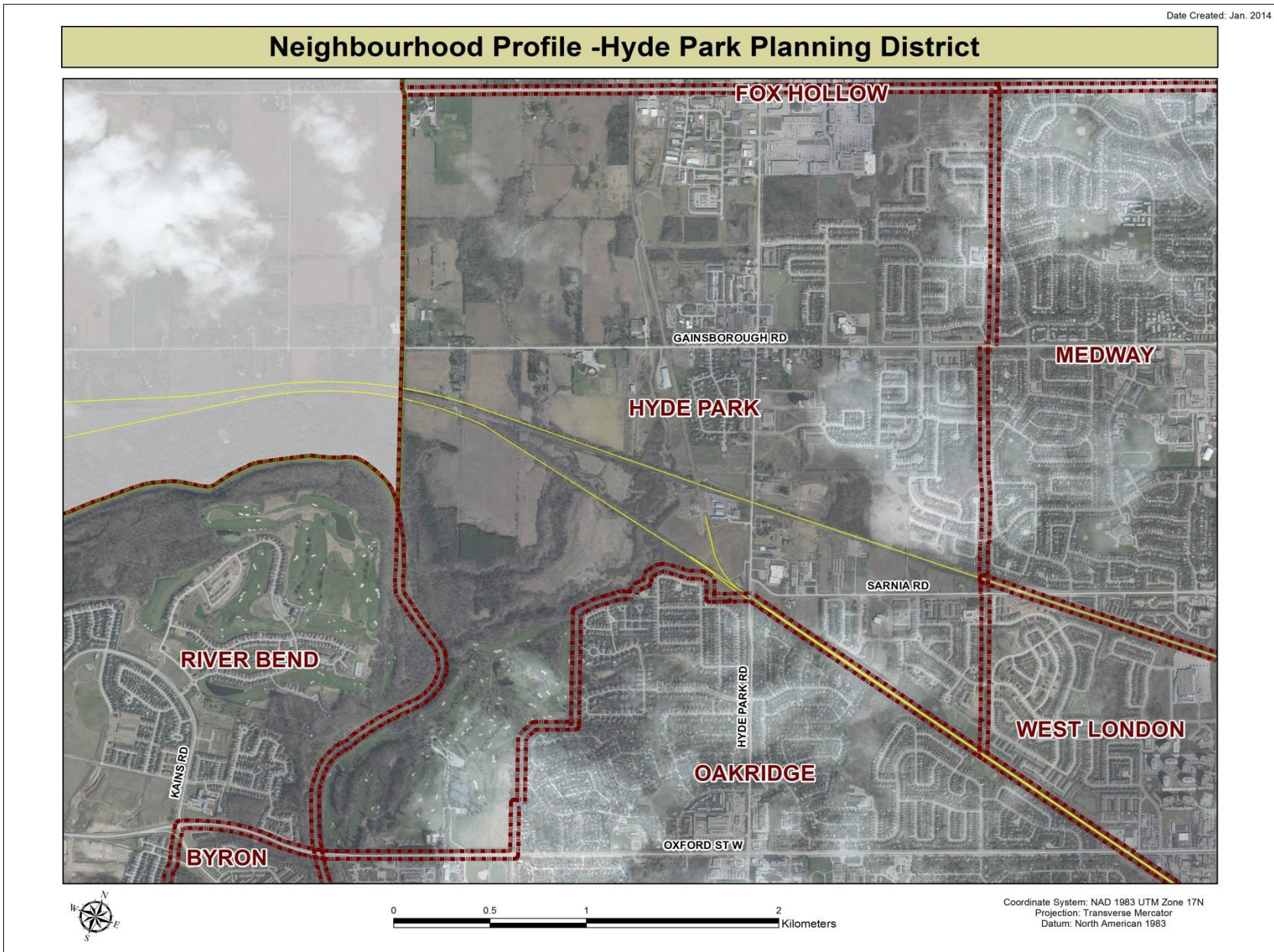
For further information contact:

John-Paul Sousa

Planning Research Analyst

Direct: (519) 661-2500 ext. 5989 | email: [jpsousa@london.ca](mailto:jpsousa@london.ca)

Date Created: Jan. 2014

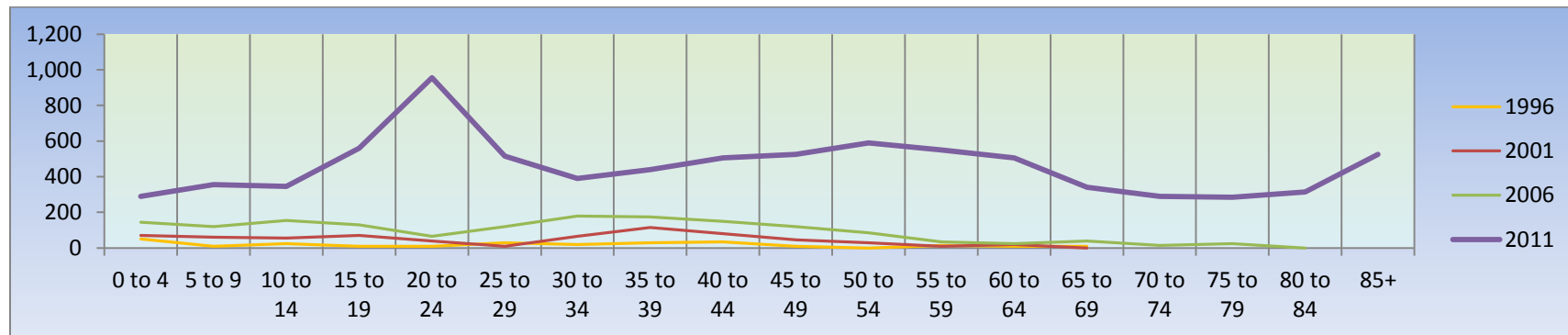


## Population Characteristics & Age Distribution

Hyde Park Neighbourhood	1996	2001	2006	2011	Change From Previous Period	
<b>Total Population</b>	<b>270</b>	<b>730</b>	<b>1,585</b>	<b>6,220</b>	↑	<b>292%</b>
Female	130	355	835	3,215	↑	285%
Male	140	375	750	3,000	↑	300%

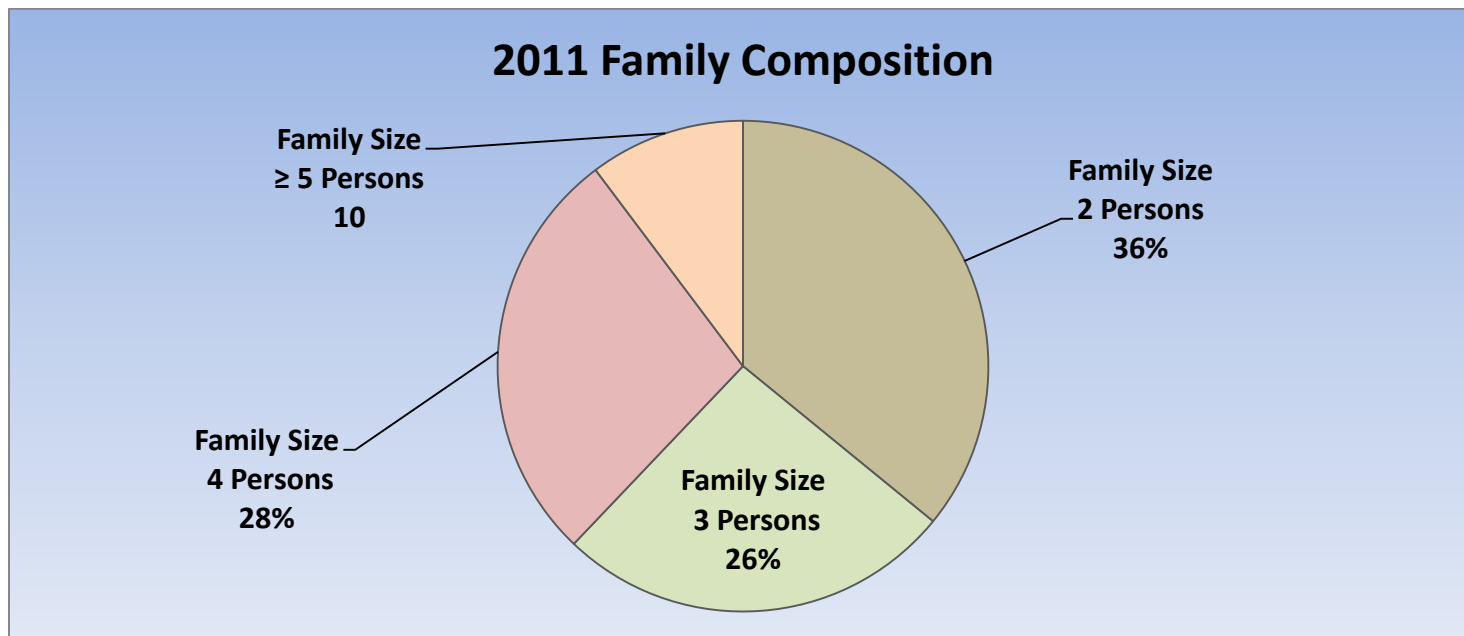
Age Structure	1996	2001	2006	2011	Change From Previous Period		As a % of Neighbourhood
<b>0-19</b>	<b>95</b>	<b>155</b>	<b>555</b>	<b>1,880</b>	↑	<b>239%</b>	<b>30%</b>
0 to 4	50	70	145	650	↑	348%	10%
5 to 9	10	60	120	450	↑	275%	7%
10 to 14	25	55	155	390	↑	152%	6%
15 to 19	10	70	130	390	↑	200%	6%
<b>20-44</b>	<b>125</b>	<b>310</b>	<b>690</b>	<b>2,710</b>	↑	<b>293%</b>	<b>44%</b>
<b>45-64</b>	<b>35</b>	<b>105</b>	<b>380</b>	<b>1,200</b>	↑	<b>216%</b>	<b>19%</b>
<b>65+</b>	<b>10</b>	<b>80</b>	<b>80</b>	<b>435</b>	↑	<b>444%</b>	<b>7%</b>
<b>Median Age</b>	<b>N.A.</b>	<b>N.A.</b>	<b>N.A.</b>	<b>32.5</b>			

2011 Census Age Cohort Breakout	Male	Female	Total	As a % of Neighbourhood
0 to 4	340	315	655	10.51%
5 to 9	220	225	445	7.15%
10 to 14	195	200	395	6.34%
15 to 19	200	190	390	6.26%
20 to 24	150	165	315	5.05%
25 to 29	235	305	540	8.66%
30 to 34	340	395	735	11.79%
35 to 39	320	305	625	10.02%
40 to 44	250	250	500	8.02%
45 to 49	195	235	430	6.90%
50 to 54	170	155	325	5.21%
55 to 59	115	125	240	3.85%
60 to 64	100	105	205	3.29%
65 to 69	70	60	130	2.09%
70 to 74	35	40	75	1.20%
75 to 79	20	35	55	0.88%
80 to 84	20	45	65	1.04%
85+	25	85	110	1.76%
<b>Total</b>	<b>3,000</b>	<b>3,235</b>	<b>6,235</b>	



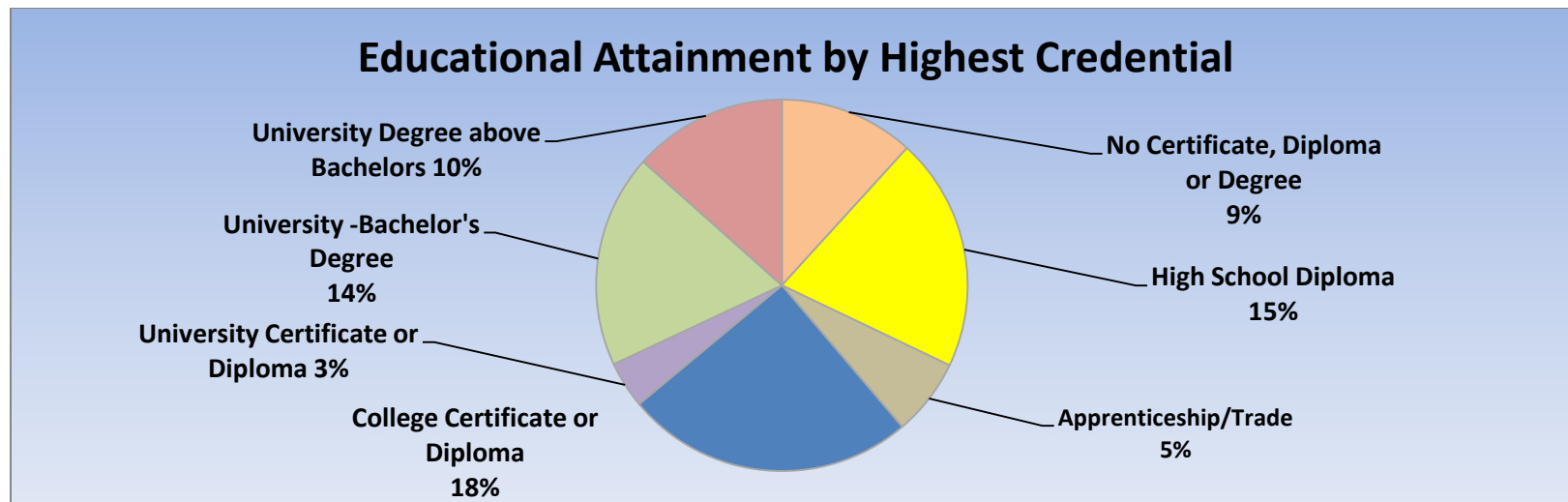
<b>Marital Status</b>	<b>1996</b>	<b>2001</b>	<b>2006</b>	<b>2011</b>	<b>Change From Previous Period</b>	<b>As a % of Neighbourhood</b>
Single	45	155	290	1,050	↑ 262%	17%
Married	110	335	720	2,810	↑ 290%	45%
Common-Law	0	10	95	395	↑ 316%	6%
Divorced	0	30	90	180	↑ 100%	3%
Separated	0	20	15	90	↑ 500%	1%
Widowed	25	10	50	195	↑ 290%	3%
<b>Citizenship, Immigration &amp; Ethnic Identity</b>	<b>1996</b>	<b>2001</b>	<b>2006</b>	<b>2011</b>	<b>Change From Previous Period</b>	<b>As a % of Neighbourhood</b>
<b>Citizenship</b>						
Canadian Citizens	240	730	1,490	5,560	↑ 273%	89%
Non-Canadian Citizens	20	0	90	460	↑ 411%	7%
<b>Immigration Status</b>						
Canadian Born Population	210	520	1,190	4,175	↑ 251%	67%
Foreign Born Population	55	210	390	1,780	↑ 356%	29%
Visible Minority Population	0	110	295	1,705	↑ 478%	27%
Aboriginal Identity Population	0	0	0	100	↑ 100%	2%

Family Composition	1996	2001	2006	2011	Change From Previous Period	As a % of Neighbourhood
<b>Number of Census Families</b>	<b>55</b>	<b>200</b>	<b>460</b>	<b>1,755</b>	↑ 282%	
Family Size - 2 Persons	10	50	140	630	↑ 350%	36%
Family Size - 3 Persons	25	55	170	460	↑ 171%	26%
Family Size - 4 Persons	10	55	115	485	↑ 322%	28%
Family Size - ≥ 5 Persons	15	30	35	180	↑ 414%	10%
<b>Census Family - Average Size</b>	<b>4</b>	<b>3</b>	<b>3</b>	<b>3.2</b>	↑	



Family Structure & Number of Children	1996	2001	2006	2011	Change From Previous Period	As a % of Neighbourhood
<b>Married Couples</b>	<b>55</b>	<b>170</b>	<b>355</b>	<b>1,370</b>	<b>↑ 2.86%</b>	
Without Children	10	45	85	410	↑ 382%	
With Children	50	125	270	955	↑ 254%	
<b>Common-Law</b>	<b>0</b>	<b>10</b>	<b>45</b>	<b>195</b>	<b>↑ 333%</b>	
Without Children	0	0	30	125	↑ 317%	
With Children	0	0	15	70	↑ 367%	
<b>Lone Parent Families</b>	<b>0</b>	<b>20</b>	<b>60</b>	<b>185</b>	<b>↑ 208%</b>	
Female Headed	0	0	45	160	↑ 256%	
1 Child	0	0	15	75	↑ 400%	
2 Children	0	20	25	60	↑ 140%	
≥ 3 Children	0	0	0	25	↑ 100%	
Male Headed	0	0	20	30	↑ 50%	
1 Child	0	0	10	15	↑ 50%	
2 Children	0	0	15	10	↓ (-33%)	
≥ 3 Children	0	0	0	0	—	

Educational Attainment by Credential	1996	2001	2006	2011	Change From Previous Period	As a % of Neighbourhood
No Certificate, Diploma or Degree	N.A.	N.A.	75	535	↑ 613%	9%
High School Diploma or Equivalent	N.A.	N.A.	235	925	↑ 294%	15%
Apprenticeship, or Trade Certificate	0	55	50	305	↑ 510%	5%
College Certificate or Diploma	N.A.	85	270	1,145	↑ 318%	18%
University Certificate or Diploma	N.A.	N.A.	25	185	↑ 640%	3%
University -Bachelor's Degree	N.A.	N.A.	65	845	↑ 1,200%	14%
University Degree above bachelor level (M.A. or PhD)	N.A.	N.A.	125	610	↑ 388%	10%



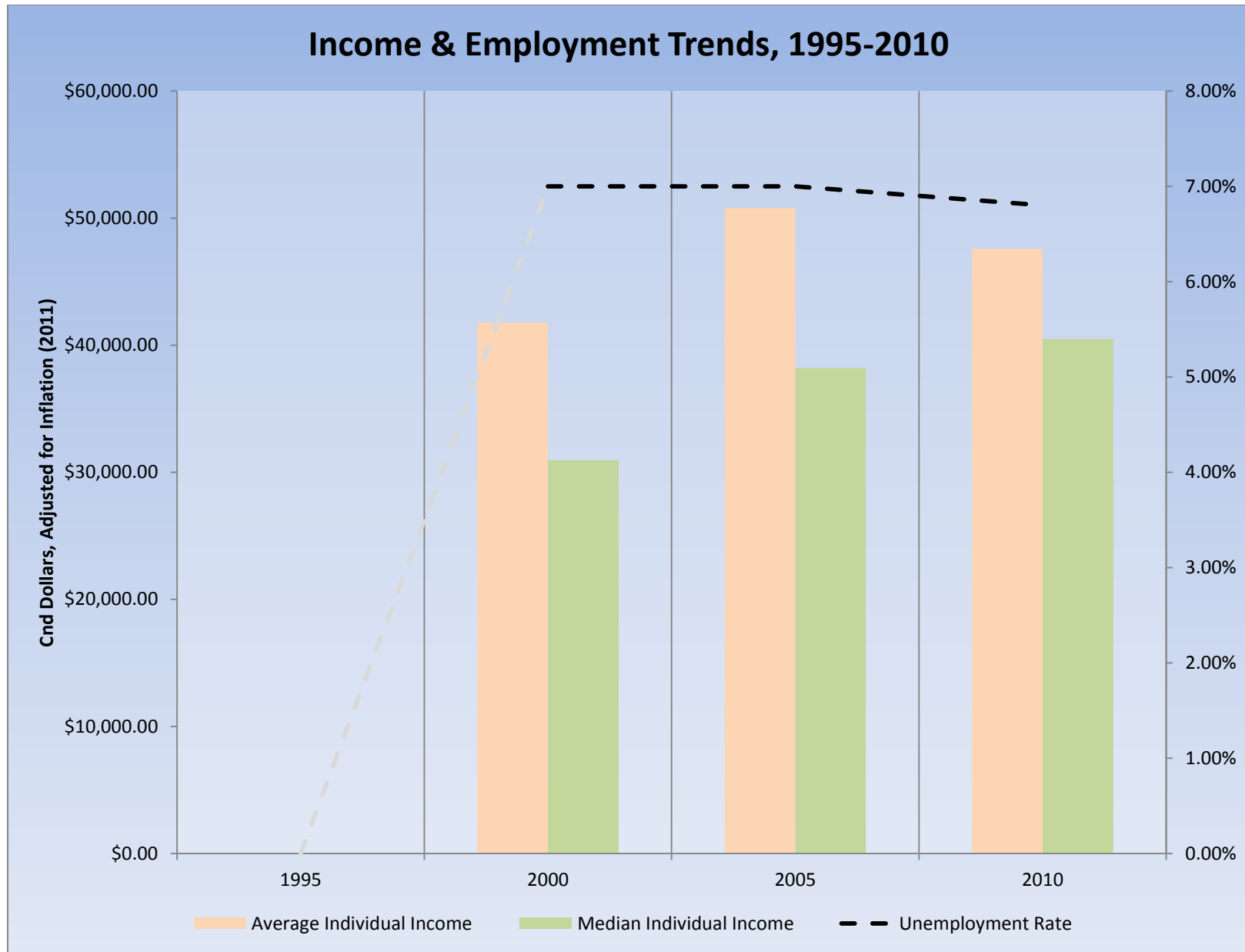


Housing by Structure Type & Tenure	1996	2001	2006	2011	Change From Previous Period	As a % of Neighbourhood
<b>Total Occupied Dwellings</b>	<b>80</b>	<b>225</b>	<b>530</b>	<b>2,065</b>	<b>↑ 290%</b>	
Single-Detached	80	185	495	1,835	↑ 278%	89%
Semi-Detached	0	25	15	55	↑ 267%	3%
Row House	0	0	0	115	↑ 100%	6%
Duplex	0	0	15	5	↓ (-67%)	<1%
Apartment < 5 Storeys	0	15	10	5	↓ (-50%)	<1%
Apartment ≥ 5 Storeys	0	0	0	50	↑ 100	2%
<b>Number of Owned Dwellings</b>	<b>55</b>	<b>175</b>	<b>505</b>	<b>1,990</b>	<b>↑ 294%</b>	<b>96%</b>
Owned as a % of Total	69%	78%	96%	96%	—	—
<b>Number of Rented Dwellings</b>	<b>25</b>	<b>50</b>	<b>20</b>	<b>80</b>	<b>↑ 300%</b>	<b>4%</b>
Rented as a % of Total	31%	22%	4%	4%	—	—
Average # of Rooms	9	8	8	7	↓	
Average # of Bedrooms	4	3	3	N.A.	—	
Average Gross Rent	\$904.00	\$804.00	\$722.00	\$1,529.00	↑ 112%	
Average Value of Dwelling	\$248,253.00	\$211,719.00	\$282,388.00	\$310,133.00	↑ 10%	

Labour Market Indicators	1996	2001	2006	2011	Change From Previous Period		As a % of Work Force
<b>Total Labour Force ≥ 15 years</b>	<b>100</b>	<b>440</b>	<b>870</b>	<b>3,405</b>	↑	<b>291%</b>	
Female	55	185	415	1,695	↑	308%	50%
Male	45	255	455	1,710	↑	276%	50%
<b>Unemployment Rate</b>	<b>N.A.</b>	<b>7%</b>	<b>7%</b>	<b>6.80%</b>	↓		
Female	N.A.	11%	10%	5.60%	↓		
Male	N.A.	4%	3%	7.90%	↑		
Employment Rate	N.A.	N.A.	N.A.	73.00%	–		
Participation Rate	72%	80%	75%	74.90%	↓		
Female	55%	73%	70%	71.40%	↑		
Male	100%	86%	81%	73.00%	↓		
<b>Labour Force by Sector</b>							
Primary (Agriculture & Resources)	25	10	20	0	↓	(-100%)	0%
Secondary (Construction & Manufacturing)	40	110	155	460	↑	197%	14%
Tertiary Services	60	320	675	2,855	↑	323%	86%

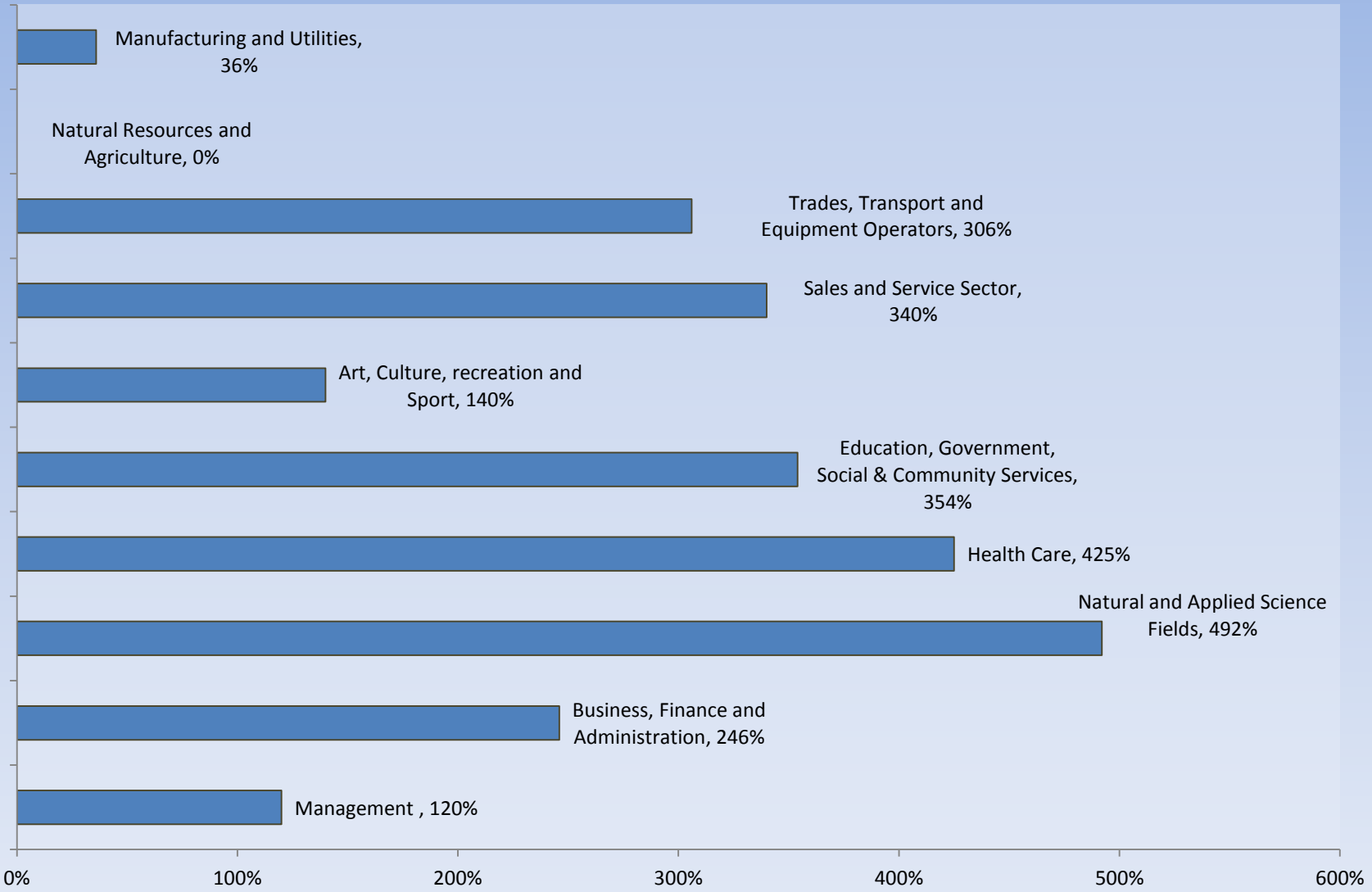
Income Characteristics of Economically Active Population	1996	2001	2006	2011	Change From Previous Period	
<b>Individual Income</b>						
Average Income	N.A.	\$33,172.00	\$45,210.00	\$46,066.00	↑	2%
Median Income	N.A.	\$24,566.00	\$34,007.00	\$39,183.00	↑	15%
<b>Income by Gender</b>						
Average Income – Male	N.A.	\$30,970.00	\$59,337.00	\$54,078.00	↓	(-9%)
Average Income - Female	N.A.	\$35,374.00	\$31,823.00	\$38,931.00	↑	22%
Median Income – Male	N.A.	\$31,474.00	\$49,757.00	\$48,417.00	↓	(-3%)
Median Income - Female	N.A.	\$17,658.00	\$29,785.00	\$33,801.00	↑	13%
<b>Household Income</b>						
Average Household Income	N.A.	\$76,632.00	\$92,828.00	\$95,563.00	↑	3%
Median Household Income	N.A.	\$70,314.00	\$83,373.00	\$91,162.00	↑	9%
<b>Family Income</b>						
Average Family Income	N.A.	\$79,220.00	\$99,551.00	\$99,011.00	↓	(-1%)
Median Family Income	N.A.	\$68,798.00	\$87,359.00	\$96,324.00	↑	10%
<b>Lone-Parent Families</b>						
Average Family Income	N.A.	N.A.	N.A.	\$60,816.00	—	
Median Family Income	N.A.	N.A.	N.A.	\$56,932.00	—	

Data Note: Income figures based on previous reporting year (1995, 2000, 2005 & 2010).



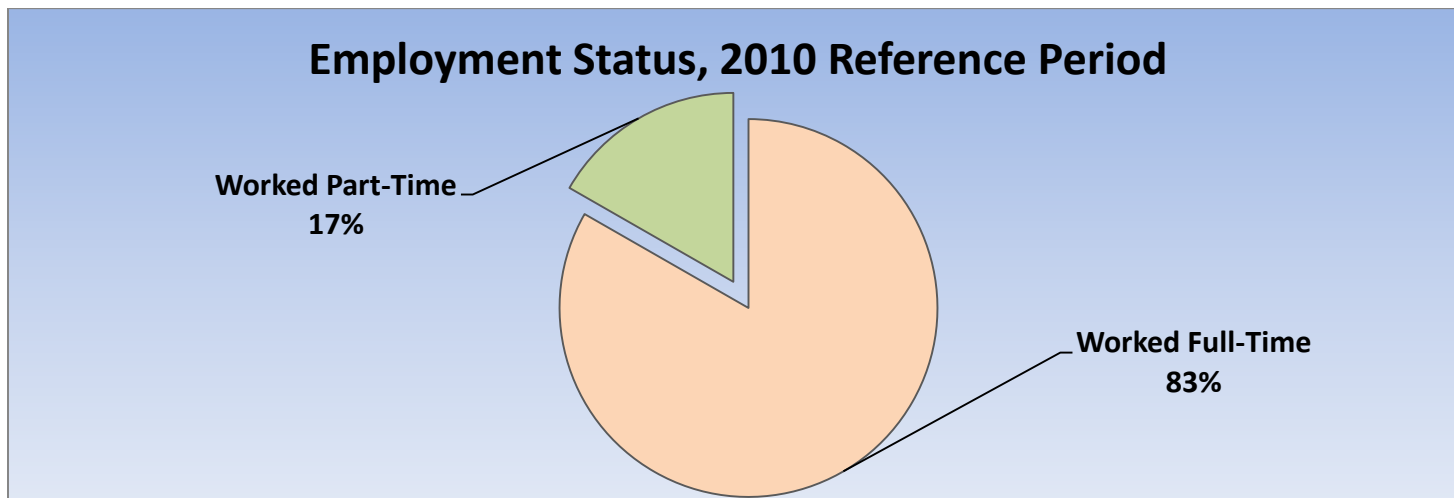
<b>Labour Force by National Occupational Classification</b>	<b>1996</b>	<b>2001</b>	<b>2006</b>	<b>2011</b>	<b>Change From Previous Period</b>		<b>As a % of Labour Force</b>
Management	0	65	120	350	↑	120%	11%
Business, Finance and Administration	15	80	120	415	↑	246%	13%
Natural and Applied Science Fields	0	0	60	355	↑	492%	11%
Health Care	0	20	60	315	↑	425%	10%
Education, Government, Social & Community Services	10	15	130	590	↑	354%	18%
Art, Culture, recreation and Sport	0	0	25	60	↑	140%	2%
Sales and Service Sector	35	125	175	770	↑	340%	23%
Trades, Transport and Equipment Operators	25	45	90	365	↑	306%	11%
Natural Resources and Agriculture	10	25	0	0	–	–	0%
Manufacturing and Utilities	20	40	70	95	↑	36%	3%

### Employment Trends by Occupational Breakout, 2006-2011



Class of Worker	1996	2001	2006	2011	Change From Previous Period	As a % Work Force
<b>Employee</b>	<b>110</b>	<b>385</b>	<b>745</b>	<b>3,020</b>	<b>↑ 305%</b>	<b>91%</b>
Female	50	165	370	1,550		
Male	60	220	375	1,470		
<b>Self-Employed</b>	<b>10</b>	<b>40</b>	<b>100</b>	<b>295</b>	<b>↑ 195%</b>	<b>9%</b>
Female	0	10	15	110		
Male	10	30	85	185		

Employment Status	1996	2001	2006	2011	Change From Previous Period	As a % of Active Labour Force
Worked Full-Time in 2010	N.A.	N.A.	N.A.	2,690	N.A.	83%
Worked Part-Time in 2010	N.A.	N.A.	N.A.	540	N.A.	17%



Mode of Transport to Work	1996	2001	2006	2011	Change From Previous Period	As a % of Neighbourhood
Automobile -As a Driver	100	310	660	2,555	↑ 287%	86%
Car-Pool	0	55	40	255	↑ 538%	9%
Public Transportation	0	0	35	80	↑ 129%	3%
Walked or Bicycled	0	0	30	75	↑ 150%	3%
Other Modes	0	0	20	0	↓ (-100%)	0%
<b>Median Commuting Duration</b>	<b>N.A.</b>	<b>N.A.</b>	<b>N.A.</b>	<b>20.4min</b>		

Place of Work	1996	2001	2006	2011	Change From Previous Period	As a % of Neighbourhood
Worked at Home	10	30	35	190	↑ 443%	6%
Worked at a Fixed Address	110	325	725	2,695	↑ 272%	85%
No Fixed Workplace Address	10	55	40	275	↑ 588%	9%
Worked within Municipality	90	255	645	N.A.	— —	
Work in a different Municipality	10	70	80	N.A.	— —	
Worked outside Canada	0	0	10	0	↓ (-100%)	

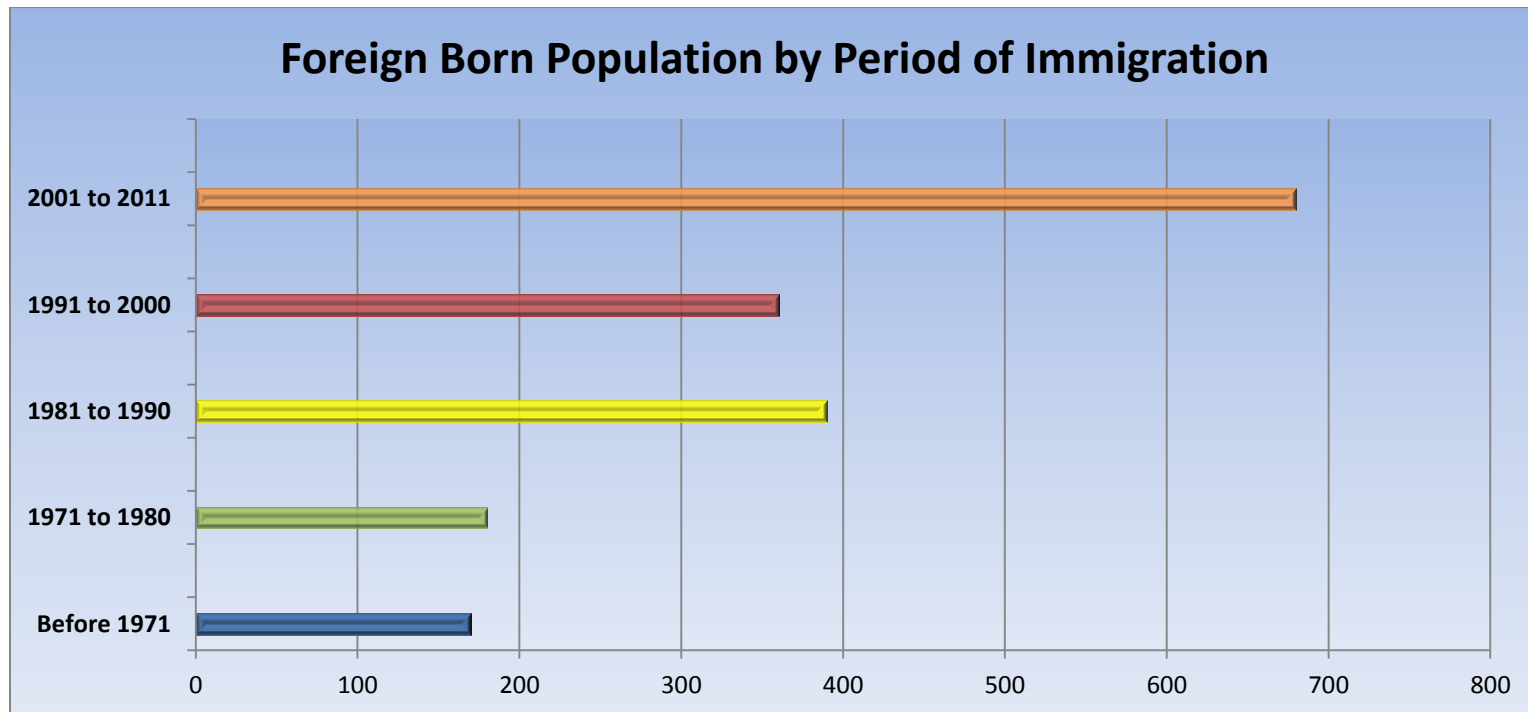


Mobility/Migration Status	1996	2001	2006	2011	Change From Previous Period	As a % of Neighbourhood
Lived at the same address 5 years ago	85	325	455	1,320	↑	25%
<b>Moved sometime with the last 5 years</b>	<b>125</b>	<b>340</b>	<b>975</b>	<b>4,040</b>	↑ 314%	<b>75%</b>
<b>Internal Migrants</b>	<b>15</b>	<b>20</b>	<b>225</b>	<b>980</b>	↑ 336%	<b>79%</b>
- Intra-provincial	15	20	210	730	↑	
- Inter-provincial	15	0	10	245	↑	
<b>External Migrants</b>	<b>0</b>	<b>0</b>	<b>75</b>	<b>255</b>	↑ 240%	<b>21%</b>
Lived at the same address 1 years ago	215	685	1,120	4,780	↑ 327%	82%
<b>Moved sometime with the last year</b>	<b>40</b>	<b>40</b>	<b>440</b>	<b>1,085</b>	↑ 147%	<b>18%</b>
<b>Internal Migrants</b>	<b>20</b>	<b>0</b>	<b>45</b>	<b>230</b>	↑ 411%	<b>84%</b>
- Intra-provincial	20	0	40	190	↑ 375%	
- Inter-provincial	0	0	5	45	↑ 800%	
<b>External Migrants</b>	<b>0</b>	<b>0</b>	<b>0</b>	<b>45</b>	↑ 100%	<b>16%</b>

Place of Birth	1996	2001	2006	2011	Change From Previous Period		As a % of Neighbourhood
<b>Total Immigrant Population</b>	<b>N.A.</b>	<b>N.A.</b>	<b>390</b>	<b>1,780</b>	<b>↑</b>	<b>356%</b>	<b>29%</b>
<b>Place of Birth by Continent</b>							
North America (US only)	N.A.	N.A.	10	50	↑	400%	1%
Africa	N.A.	N.A.	10	190	↑	1,800%	3%
Asia	N.A.	N.A.	170	570	↑	235%	9%
Caribbean	N.A.	N.A.	0	10	↑	100%	<1%
Central and South America	N.A.	N.A.	0	305	↑	100%	5%
Europe	N.A.	N.A.	185	600	↑	224%	10%
<b>Recent Immigration by Continent, 2006-2011</b>							
<b>Recent Immigrants</b>	<b>N.A.</b>	<b>N.A.</b>	<b>50</b>	<b>335</b>	<b>↑</b>	<b>570%</b>	<b>5%</b>
North America (US only)	N.A.	N.A.	10	0	↓	(-100%)	0%
Africa	N.A.	N.A.	0	0	—	—	0%
Asia	N.A.	N.A.	35	135	↑	286%	2%
Caribbean	N.A.	N.A.	0	0	—	—	0%
Central and South America	N.A.	N.A.	10	120	↑	1,100	2%
Europe	N.A.	N.A.	0	50	↑	100%	1%

<b>Immigration by Place of Birth</b>	<b>1996</b>	<b>2001</b>	<b>2006</b>	<b>2011</b>	<b>Change From Previous Period</b>	<b>As a % of Neighbourhood</b>
1. Colombia	N.A.	N.A.	N.A.	155		2%
2. Poland	N.A.	N.A.	N.A.	150		2%
3. South Korea	N.A.	N.A.	N.A.	110		2%
4. India	N.A.	N.A.	N.A.	85		1%
5. United Kingdom	N.A.	N.A.	N.A.	75		1%
6. China	N.A.	N.A.	N.A.	75		1%
7. Iran	N.A.	N.A.	N.A.	75		1%
8. Nigeria	N.A.	N.A.	N.A.	75		1%
9. United Kingdom	N.A.	N.A.	N.A.	75		1%
10. Romania	N.A.	N.A.	N.A.	55		<1%

Period of Immigration	1996	2001	2006	2011	Change From Previous Period	As a % of Neighbourhood
Before 1971	N.A.	N.A.	80	170	↑ 113%	3%
1971 to 1980	N.A.	N.A.	45	180	↑ 300%	3%
1981 to 1990	N.A.	N.A.	80	390	↑ 388%	6%
1991 to 2000	N.A.	N.A.	145	360	↑ 148%	6%
2001 to 2011	N.A.	N.A.	50	680	↑ 1,260%	11%



Language	1996	2001	2006	2011	Change From Previous Period		As a % of Neighbourhood
<b>Knowledge of Official Languages</b>							
English Only	255	640	1,490	5,380	↑	261%	86%
French Only	0	0	0	10	↑	100%	<1%
English and French	15	70	75	555	↑	640%	9%
Neither English or French	0	15	20	105	↑	425%	2%
<b>Language Spoken Most Often at Home</b>							
English	265	545	1,320	4,670	↑	254%	75%
French	0	0	0	65	↑	100%	1%
Non-Official Language	0	45	240	1,005	↑	319%	16%
<b>Mother Tongue *</b>							
English	245	500	1,125	3,930	↑	249%	63%
French	10	0	0	75	↑	100%	1%
Non-Official Language	10	225	430	1,910	↑	344%	31%

\* Statistics Canada defines 'mother tongue' as the first language learned in childhood and still understood by the individual at the time of census reporting.

<b>Non-Official Languages Spoken Top 10 Reported</b>	<b>1996</b>	<b>2001</b>	<b>2006</b>	<b>2011</b>	<b>Change From Previous Period</b>		<b>As a % of Neighbourhood</b>
1. Spanish	N.A.	N.A.	N.A.	405	—	—	7%
2. Arabic	N.A.	N.A.	N.A.	275	—	—	4%
3. Polish	N.A.	N.A.	N.A.	220	—	—	4%
4. Korean	N.A.	N.A.	N.A.	160	—	—	3%
5. Sinhala	N.A.	N.A.	N.A.	150	—	—	2%
6. Greek	N.A.	N.A.	N.A.	135	—	—	2%
7. Portuguese	N.A.	N.A.	N.A.	125	—	—	2%
8. Chinese*	N.A.	N.A.	N.A.	120	—	—	2%
9. German	N.A.	N.A.	N.A.	120	—	—	2%
10. Italian	N.A.	N.A.	N.A.	90	—	—	1%

\* Refers to Cantonese and Mandarin language speakers as well as others who do not specify otherwise.

Religious Identification	1996	2001	2006	2011	Change From Previous Period	As a % of Neighbourhood
Buddhist	N.A.	N.A.	N.A.	0		0%
Christian	N.A.	N.A.	N.A.	4,175		67%
Anglican	N.A.	N.A.	N.A.	180		3%
Baptist	N.A.	N.A.	N.A.	265		4%
Catholic	N.A.	N.A.	N.A.	2,095		34%
Orthodox	N.A.	N.A.	N.A.	270		4%
Lutheran	N.A.	N.A.	N.A.	95		2%
Pentecostal	N.A.	N.A.	N.A.	110		2%
Presbyterian	N.A.	N.A.	N.A.	170		3%
United Church	N.A.	N.A.	N.A.	300		5%
Other Christian	N.A.	N.A.	N.A.	690		11%
Hindu	N.A.	N.A.	N.A.	115		2%
Jewish	N.A.	N.A.	N.A.	40		1%
Muslim	N.A.	N.A.	N.A.	545		9%
Sikh	N.A.	N.A.	N.A.	0		0%
Aboriginal Spirituality	N.A.	N.A.	N.A.	0		0%

Notes:

- (1) Source Data –Statistics Canada. 1996-2011 Census Data, Customized Profiles. Ottawa, Canada
- (2) Data also derived from Statistics Canada’s National Household Survey (NHS)
- (3) Customized Community and Neighbourhood Profiles tabulated and compiled by the City of London’s Planning Division –Policy Planning and Research Section.