



Highland Neighbourhood Profile

For further information contact:

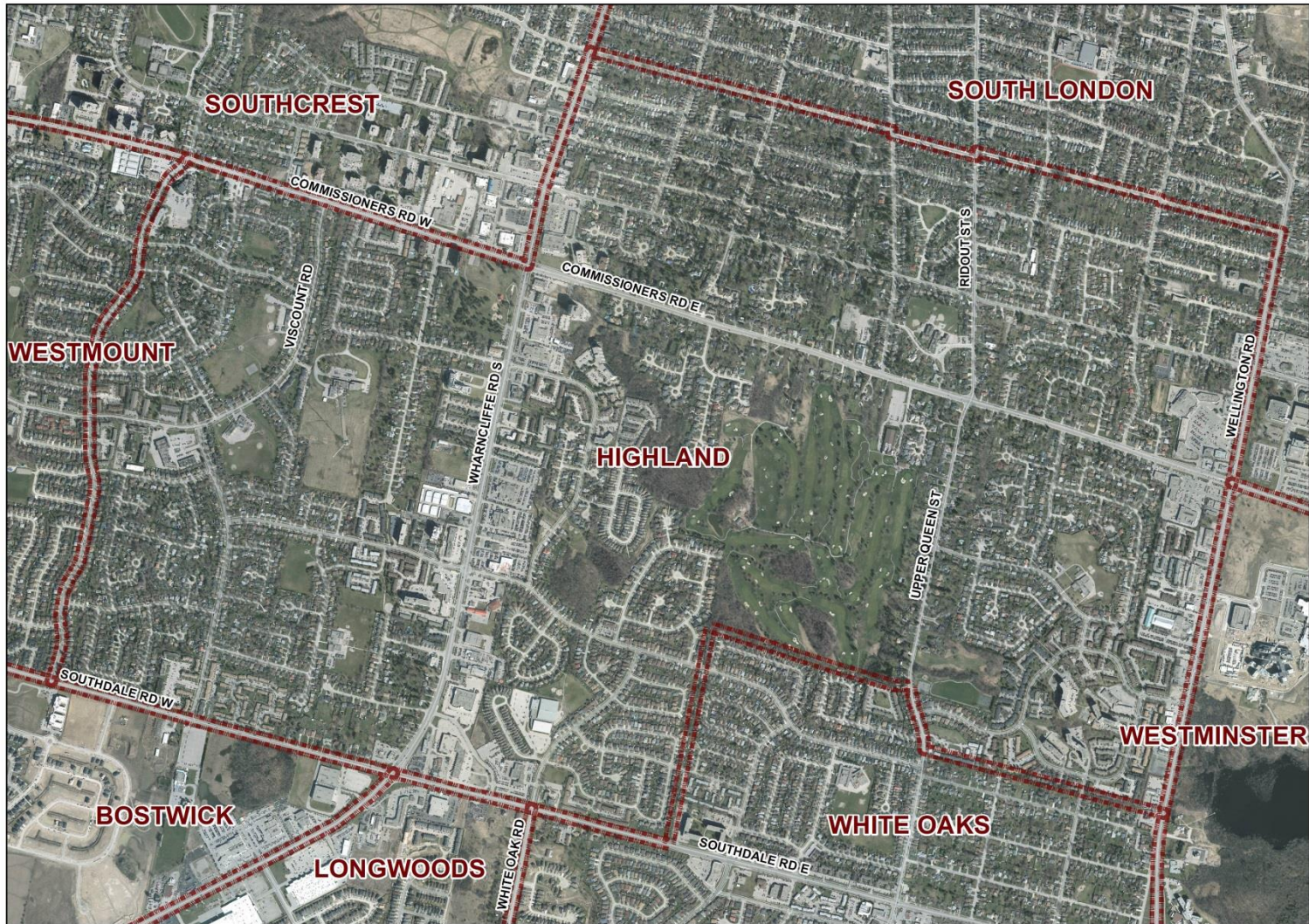
John-Paul Sousa

Planning Research Analyst

Direct: (519) 661-2500 ext. 5989 | email: jpsousa@london.ca

Date Created: Jan. 2014

Neighbourhood Profile -Highland Planning District



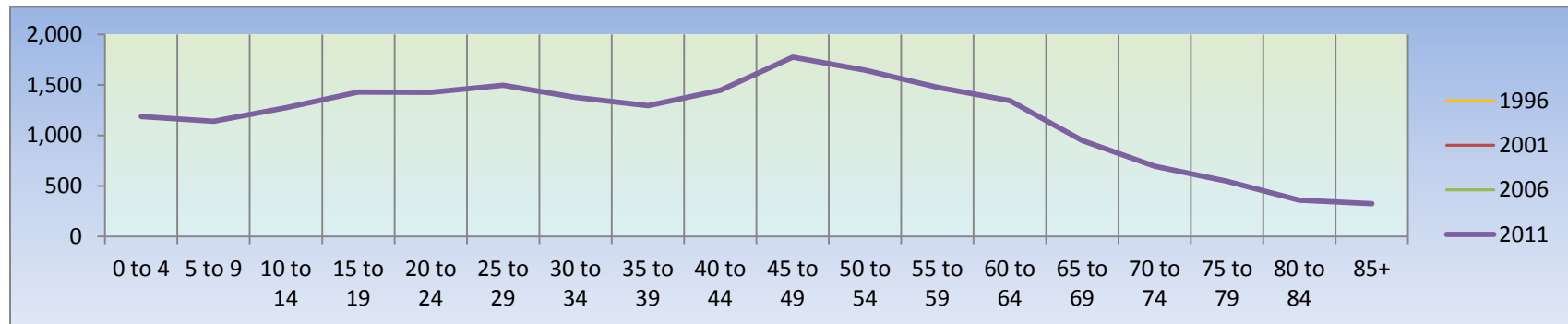
Coordinate System: NAD 1983 UTM Zone 17N
Projection: Transverse Mercator
Datum: North American 1983

Population Characteristics & Age Distribution

Highland Neighbourhood	1996	2001	2006	2011	Change From Previous Period
Total Population	21,960	21,915	21,685	21,190	↓ (-2%)
Female	11,490	11,565	11,410	11,165	↓ (-2%)
Male	10,470	10,350	10,275	10,025	↓ (-2%)

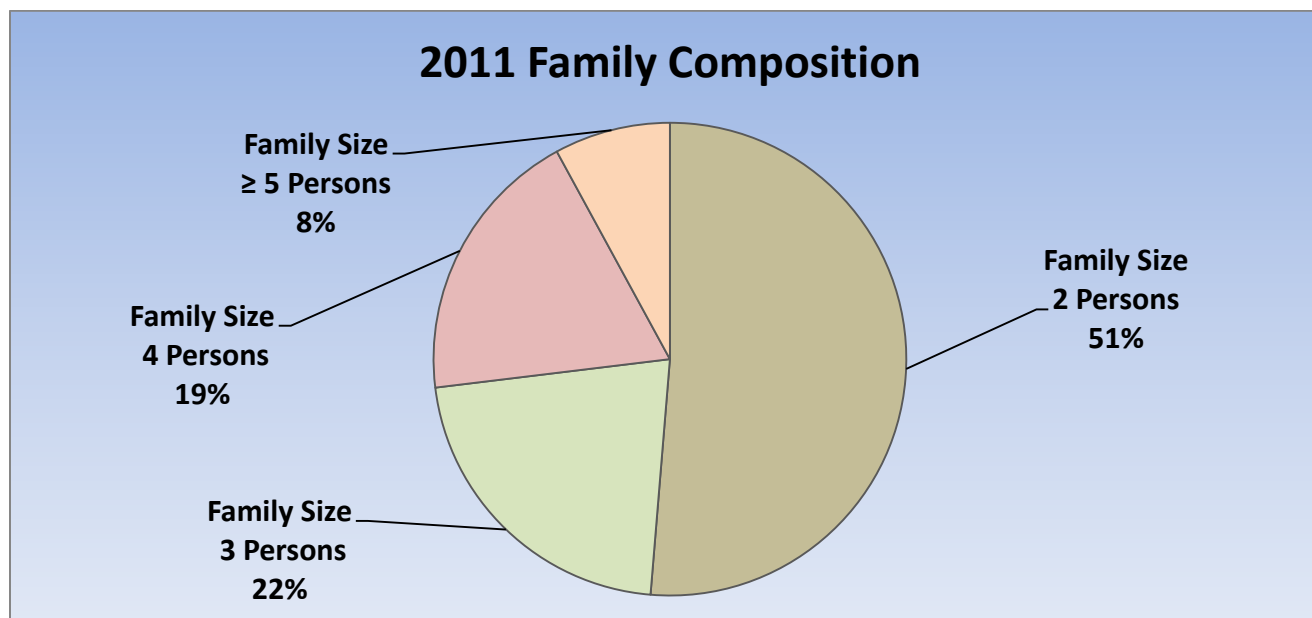
Age Structure	1996	2001	2006	2011	Change From Previous Period	As a % of Neighbourhood
0-19	5,995	5,755	5,325	5,025	↓ (-6%)	24%
0 to 4	N.A.	N.A.	N.A.	1,180	—	6%
5 to 9	N.A.	N.A.	N.A.	1,140	—	5%
10 to 14	N.A.	N.A.	N.A.	1,270	—	6%
15 to 19	N.A.	N.A.	N.A.	1,435	—	7%
20-44	8,970	8,310	7,910	7,040	↓ (-11%)	33%
45-64	4,705	5,410	5,840	6,230	↑ 7%	29%
65+	2,300	2,440	2,645	2,890	↑ 9%	14%
Median Age	N.A.	N.A.	N.A.	39.9		

2011 Census Age Cohort Breakout	Male	Female	Total	As a % of Neighbourhood
0 to 4	635	550	1,185	5.59%
5 to 9	565	575	1,140	5.38%
10 to 14	665	610	1,275	6.02%
15 to 19	730	700	1,430	6.75%
20 to 24	675	750	1,425	6.73%
25 to 29	675	820	1,425	7.06%
30 to 34	680	695	1,375	6.49%
35 to 39	615	680	1,295	6.11%
40 to 44	685	760	1,445	6.82%
45 to 49	815	960	1,775	8.38%
50 to 54	765	880	1,645	7.77%
55 to 59	645	830	1,475	6.96%
60 to 64	615	730	1,345	6.35%
65 to 69	420	530	950	4.49%
70 to 74	300	395	695	3.28%
75 to 79	250	295	545	2.57%
80 to 84	155	205	360	1.70%
85+	125	200	325	1.53%
Total	10,015	11,165	21,180	



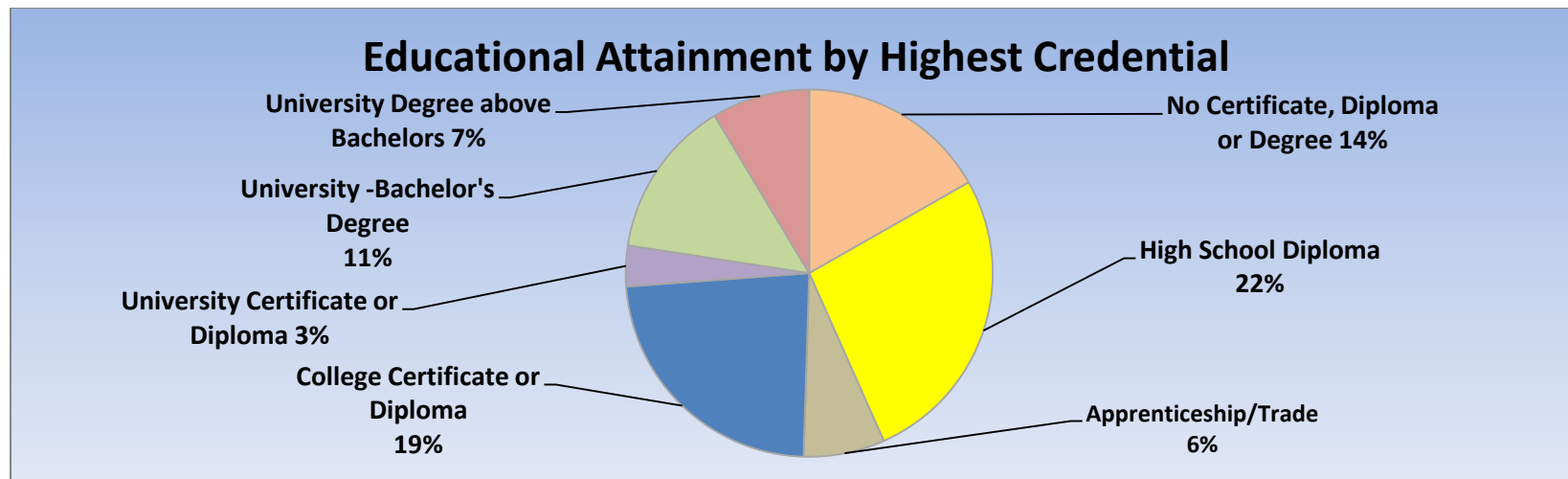
Marital Status	1996	2001	2006	2011	Change From Previous Period	As a % of Neighbourhood
Single	5,160	5,175	5,950	5,020	↓	24%
Married	9,200	9,225	8,700	9,825	↑	46%
Common-Law	900	1,280	1,555	1,550	↓	7%
Divorced	1,325	1,495	1,520	1,250	↓	6%
Separated	670	705	790	650	↓	3%
Widowed	900	890	875	840	↓	4%
Citizenship, Immigration & Ethnic Identity	1996	2001	2006	2011	Change From Previous Period	As a % of Neighbourhood
Citizenship						
Canadian Citizens	20,555	20,695	19,905	19,905	—	94%
Non-Canadian Citizens	1,405	1,220	1,785	1,905	↑	5%
Immigration Status						
Canadian Born Population	16,990	16,790	16,050	16,380	↑	77%
Foreign Born Population	4,880	4,965	5,275	4,445	↓	21%
Visible Minority Population	2,165	2,480	3,510	2,770	↓	13%
Aboriginal Identity Population	195	185	165	660	↑	3%

Family Composition	1996	2001	2006	2011	Change From Previous Period	As a % of Neighbourhood
Number of Census Families	6,165	6,305	6,260	6,115	↓	
Family Size - 2 Persons	2,720	2,975	3,080	3,135	↑	51%
Family Size - 3 Persons	1,485	1,460	1,465	1,330	↓	22%
Family Size - 4 Persons	1,330	1,305	1,175	1,160	↓	19%
Family Size - ≥ 5 Persons	630	560	535	485	↓	8%
Census Family - Average Size	N.A.	N.A.	N.A.	2.9		



Family Structure & Number of Children	1996	2001	2006	2011	Change From Previous Period
Married Couples	4,570	4,575	4,315	4,085	↓
Without Children	1,765	1,875	1,975	1,855	↓
With Children	2,800	2,695	2,335	2,225	↓
Common-Law	450	640	775	775	–
Without Children	280	455	475	460	↓
With Children	170	185	305	310	↑
Lone Parent Families	1,150	1,090	1,170	1,250	↑
Female Headed	1,035	915	960	1,005	↑
1 Child	610	545	510	660	↑
2 Children	290	310	340	255	↓
≥ 3 Children	135	55	105	90	↓
Male Headed	115	180	210	250	↑
1 Child	60	100	115	160	↑
2 Children	40	50	85	70	↓
≥ 3 Children	10	30	10	25	↑

Educational Attainment by Credential	1996	2001	2006	2011	Change From Previous Period	As a % of Neighbourhood
No Certificate, Diploma or Degree	N.A.	N.A.	2,025	2,920	↑	14%
High School Diploma or Equivalent	N.A.	N.A.	4,860	4,625	↓	22%
Apprenticeship, or Trade Certificate	N.A.	N.A.	1,300	1,245	↓	6%
College Certificate or Diploma	N.A.	N.A.	3,885	4,065	↑	19%
University Certificate or Diploma	N.A.	N.A.	85	625	↑	3%
University -Bachelor's Degree	N.A.	N.A.	3,710	2,430	↓	11%
University Degree above bachelor level (M.A. or PhD)	N.A.	N.A.	705	1,500	↑	7%

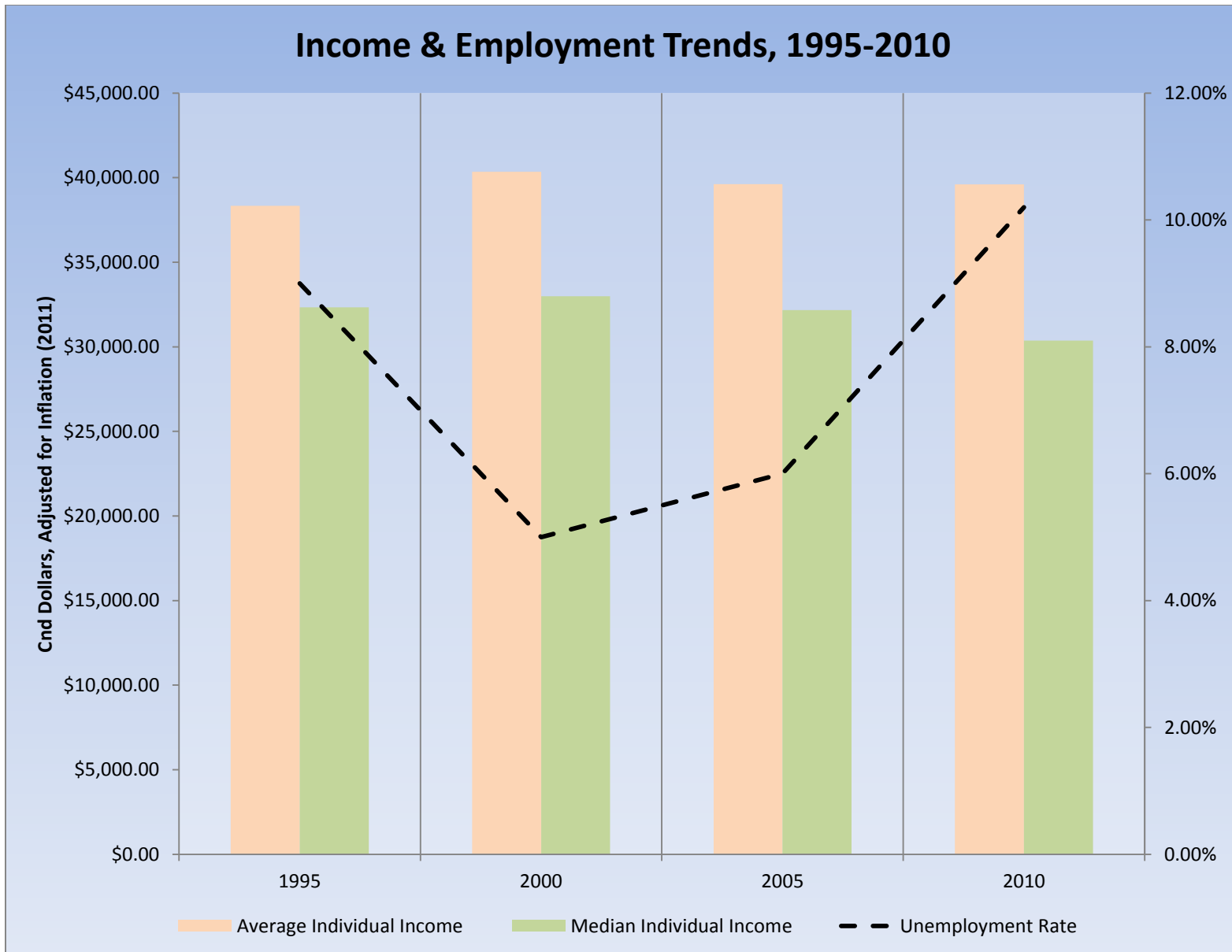


Housing by Structure Type & Tenure	1996	2001	2006	2011	Change From Previous Period		As a % of Neighbourhood
Total Occupied Dwellings	8,580	8,890	8,915	8,915	—	—	
Single-Detached	3,755	4,005	3,960	4,045	↑	2%	45%
Semi-Detached	390	325	370	370	—		4%
Row House	1,790	1,750	1,910	1,805	↓	(-5%)	20%
Duplex	85	75	85	85	—		1%
Apartment < 5 Storeys	535	640	555	585	↑	5%	7%
Apartment ≥ 5 Storeys	2,015	2,290	N.A.	2,035	—		23%
Number of Owned Dwellings	4,940	5,290	5,570	5,615	↑	<1%	
Owned as a % of Total	58%	59%	62%	63%	↑		
Number of Rented Dwellings	3,640	3,605	3,350	3,240	↓	(-3%)	
Rented as a % of Total	42%	41%	38%	37%	↓		
Average # of Rooms	7	7	7	6.7			
Average # of Bedrooms	3	3	3	N.A.			
Average Gross Rent	\$677.00	\$689.00	\$788.00	\$833.00	↑	6%	
Average Value of Dwelling	\$158,903.00	\$154,473.00	\$204,340.00	\$249,232.00	↑	22%	

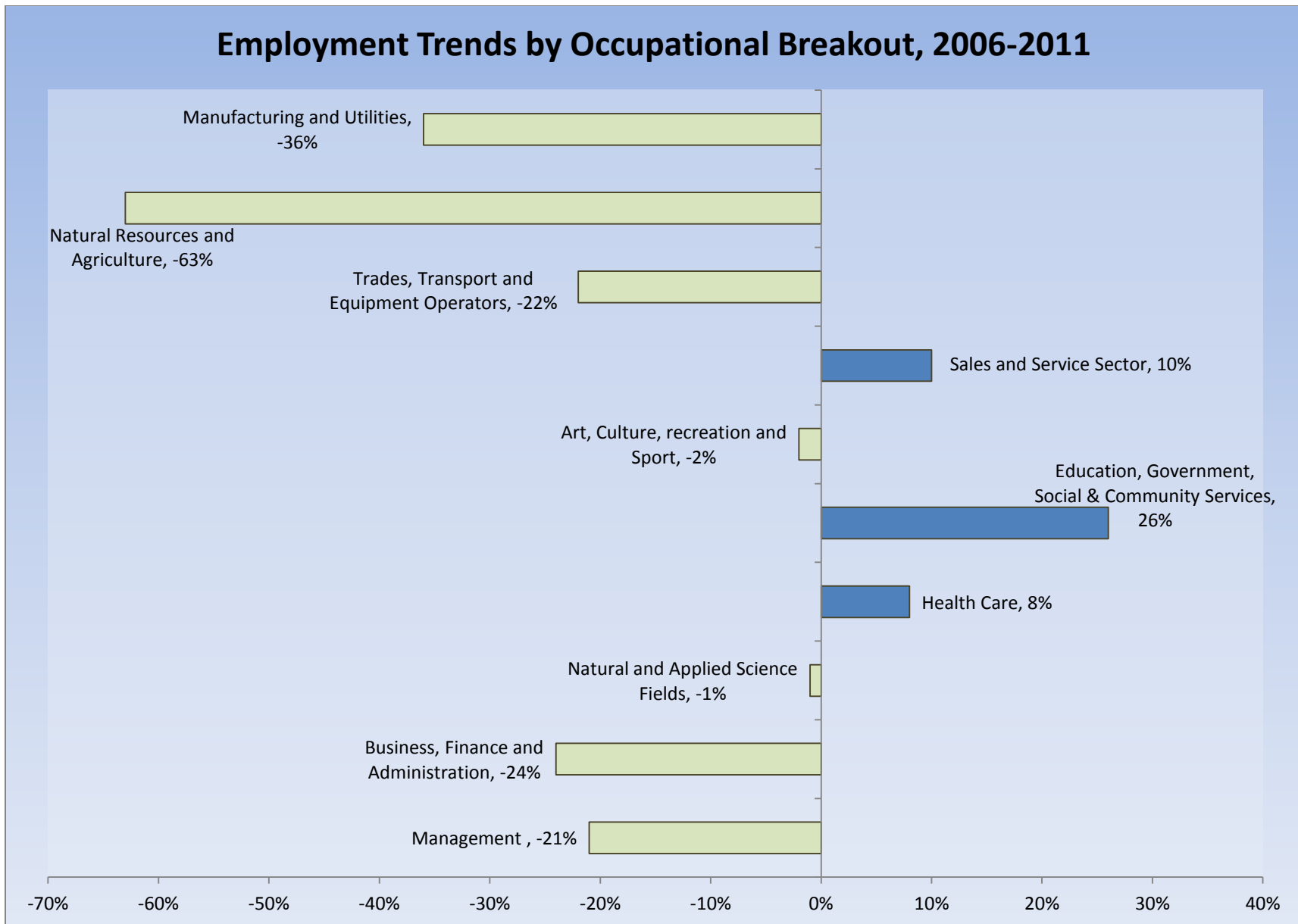
Labour Market Indicators	1996	2001	2006	2011	Change From Previous Period	As a % of Neighbourhood
Total Labour Force ≥ 15 years	11,880	12,125	12,355	11,665	↓	
Female	5,925	6,065	6,230	5,890	↓	
Male	5,925	6,060	6,125	5,780	↓	
Unemployment Rate	9%	5%	6%	10.20%	↑	
Female	10%	5%	6%	10.20%	↑	
Male	8%	6%	6%	10.30%	↑	
Employment Rate	N.A.	N.A.	N.A.	60.20%		
Participation Rate	74%	69%	69%	67.00%	↓	
Female	57%	65%	65%	62.60%	↓	
Male	86%	75%	74%	72.20%	↓	
Labour Force by Sector						
Primary (Agriculture & Resources)	105	85	130	45	↓	<1%
Secondary (Construction & Manufacturing)	1,970	2,190	2,040	1,715	↓	15%
Tertiary Services	9,455	9,605	9,600	9,515	↓	84%

Income Characteristics of Economically Active Population	1996	2001	2006	2011	Change From Previous Period
Individual Income					
Average Income	\$27,950.00	\$32,099.00	\$35,399.00	\$38,425.00	↑
Median Income	\$23,577.00	\$26,244.00	\$28,749.00	\$29,453.00	↑
Income by Gender					
Average Income – Male	\$33,614.00	\$38,480.00	\$42,234.00	\$44,486.00	↑
Average Income - Female	\$22,237.00	\$25,718.00	\$29,485.00	\$33,195.00	↑
Median Income – Male	\$28,946.00	\$32,082.00	\$35,277.00	\$36,801.00	↑
Median Income - Female	\$18,209.00	\$20,406.00	\$23,594.00	\$25,176.00	↑
Household Income					
Average Household Income	\$52,484.00	\$59,938.00	\$68,153.00	\$71,787.00	↑
Median Household Income	\$44,688.00	\$50,554.00	\$55,802.00	\$58,820.00	↑
Family Income					
Average Family Income	\$58,167.00	\$68,958.00	\$78,668.00	\$83,359.00	↑
Median Family Income	\$50,633.00	\$58,950.00	\$64,813.00	\$69,112.00	↑
Lone-Parent Families					
Average Family Income	N.A.	N.A.	N.A.	\$54,785.00	
Median Family Income	N.A.	N.A.	N.A.	\$46,666.00	

Data Note: Income figures based on previous reporting year (1995, 2000, 2005 & 2010).

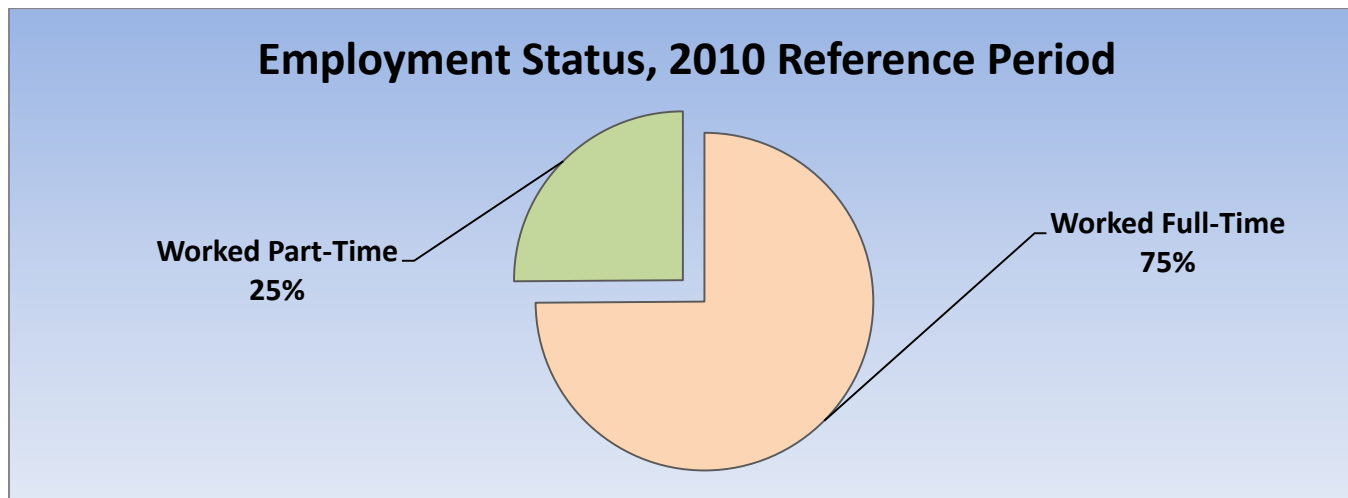


Labour Force by National Occupational Classification	1996	2001	2006	2011	Change From Previous Period	As a % of Labour Force
Management	1,240	1,315	1,220	965	↓ (-21%)	9%
Business, Finance and Administration	2,430	2,355	2,375	1,815	↓ (-24%)	16%
Natural and Applied Science Fields	500	535	670	660	↓ (-1%)	6%
Health Care	885	970	875	945	↑ 8%	8%
Education, Government, Social & Community Services	895	1,085	1,090	1,370	↑ 26%	12%
Art, Culture, recreation and Sport	375	395	315	310	↓ (-2%)	3%
Sales and Service Sector	3,295	2,995	3,130	3,450	↑ 10%	31%
Trades, Transport and Equipment Operators	1,155	1,350	1,635	1,270	↓ (-22%)	11%
Natural Resources and Agriculture	85	110	120	45	↓ (-63%)	<1%
Manufacturing and Utilities	660	785	700	445	↓ (-36%)	4%



Class of Worker	1996	2001	2006	2011	Change From Previous Period	As a % Neighbourhood
Employee	10,115	10,910	11,035	10,285	↓	91%
Female	5,305	440	5,720	5,260		
Male	4,810	820	5,315	5,025		
Self-Employed	1,125	1,260	1,080	990	↓	9%
Female	130	465	360	420		
Male	995	795	720	570		

Employment Status	1996	2001	2006	2011	Change From Previous Period	As a % of Active Labour Force
Worked Full-Time in 2010	N.A.	N.A.	N.A.	8,130	N.A.	75%
Worked Part-Time in 2010	N.A.	N.A.	N.A.	2,725	N.A.	25%



Mode of Transport to Work	1996	2001	2006	2011	Change From Previous Period	As a % of Neighbourhood
Automobile -As a Driver	7,840	8,685	8,075	7,695	↓	78%
Car-Pool	820	785	935	675	↓	7%
Public Transportation	865	615	1,130	880	↓	9%
Walked or Bicycled	520	580	670	555	↓	6%
Other Modes	50	85	70	55	↓	1%
Median Commuting Duration	N.A.	N.A.	N.A.	15.7 min.		

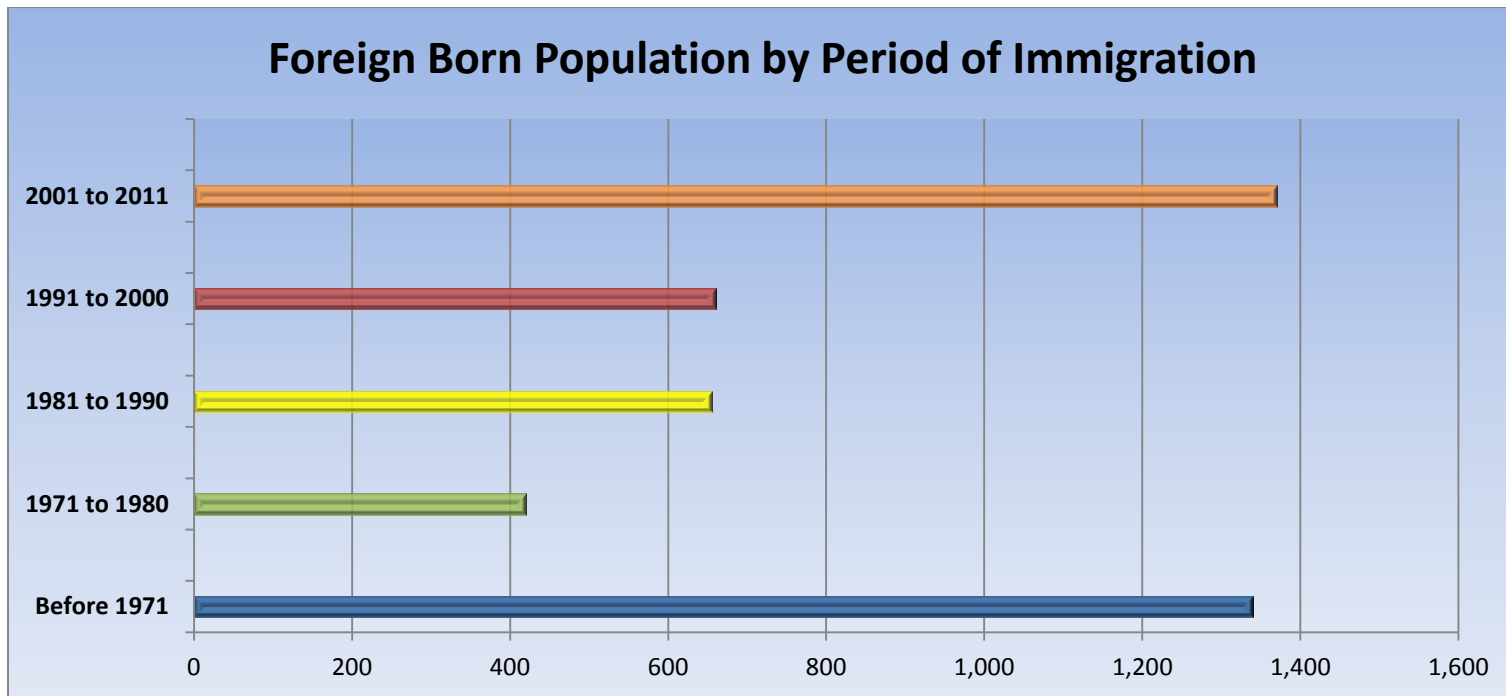
Place of Work	1996	2001	2006	2011	Change From Previous Period	As a % of Neighbourhood
Worked at Home	715	665	660	570	↓	5%
Worked at a Fixed Address	9,460	9,895	10,020	8,950	↓	86%
No Fixed Workplace Address	640	840	910	900	↑	9%
Worked within Municipality	8,295	8,680	8,740	N.A.		
Work in a different Municipality	880	1,225	1,280	N.A.		
Worked outside Canada	25	70	80	50	↓	

Mobility/Migration Status	1996	2001	2006	2011	Change From Previous Period	As a % of Neighbourhood
Lived at the same address 5 years ago	9,630	10,720	11,155	11,385	↑	57%
Moved sometime with the last 5 years	10,700	9,775	9,335	8,440	↓	43%
Internal Migrants	2,470	2,400	1,685	1,680	↓	71%
- Intra-provincial	2,110	2,120	1,490	1,415	↓	
- Inter-provincial	360	280	195	265	↑	
External Migrants	865	795	1,265	675	↓	29%
Lived at the same address 1 years ago	17,535	18,045	18,045	18,120	↑	87%
Moved sometime with the last year	4,130	3,580	3,400	2,635	↓	13%
Internal Migrants	910	970	730	585	↓	79%
- Intra-provincial	795	845	605	560	↓	
- Inter-provincial	110	125	125	25	↓	
External Migrants	170	260	265	155	↓	21%

Place of Birth	1996	2001	2006	2011	Change From Previous Period	As a % of Neighbourhood
Total Immigrant Population	N.A.	N.A.	5,275	4,445	↓	21%
Place of Birth by Continent						
North America (US only)	N.A.	N.A.	150	170	↑	1%
Africa	N.A.	N.A.	170	195	↑	1%
Asia	N.A.	N.A.	1,365	820	↓	4%
Caribbean	N.A.	N.A.	175	115	↓	<1%
Central and South America	N.A.	N.A.	800	655	↓	3%
Europe	N.A.	N.A.	2,565	2,230	↓	11%
Recent Immigration by Continent, 2006-2011						
Recent Immigrants	N.A.	N.A.	1,190	760	↓	4%
North America (US only)	N.A.	N.A.	40	55	↑	<1%
Africa	N.A.	N.A.	115	80	↓	<1%
Asia	N.A.	N.A.	135	135	—	1%
Caribbean	N.A.	N.A.	25	0	↓	0%
Central and South America	N.A.	N.A.	480	265	↓	1%
Europe	N.A.	N.A.	75	110	↓	1%

Immigration by Place of Birth	1996	2001	2006	2011	Change From Previous Period	As a % of Neighbourhood
1. United Kingdom	N.A.	N.A.	N.A.	650		3%
2. Colombia	N.A.	N.A.	N.A.	470		2%
3. Poland	N.A.	N.A.	N.A.	215		1%
4. Germany	N.A.	N.A.	N.A.	180		1%
5. United States	N.A.	N.A.	N.A.	170		1%
6. Netherlands	N.A.	N.A.	N.A.	145		1%
7. Italy	N.A.	N.A.	N.A.	130		1%
8. Portugal	N.A.	N.A.	N.A.	125		1%
9. El Salvador	N.A.	N.A.	N.A.	120		<1%
10. Guyana	N.A.	N.A.	N.A.	120		<1%

Period of Immigration	1996	2001	2006	2011	Change From Previous Period	As a % of Neighbourhood
Before 1971	N.A.	N.A.	1,555	1,340	↓	6%
1971 to 1980	N.A.	N.A.	615	420	↓	2%
1981 to 1990	N.A.	N.A.	775	655	↓	3%
1991 to 2000	N.A.	N.A.	675	660	↓	3%
2001 to 2011	N.A.	N.A.	N.A.	1,370		6%



Language	1996	2001	2006	2011	Change From Previous Period	As a % of Neighbourhood
Knowledge of Official Languages						
English Only	20,090	20,200	19,855	19,445	↓	92%
French Only	15	0	10	15	↑	<1%
English and French	1,580	1,505	1,445	1,415	↓	7%
Neither English or French	280	205	380	270	↓	1%
Language Spoken Most Often at Home						
English	19,630	17,970	18,770	18,290	↓	86%
French	150	50	40	85	↑	<1%
Non-Official Language	1,660	1,140	2,570	2,025	↓	10%
Mother Tongue *						
English	19,630	17,970	18,770	16,545	↓	78%
French	150	50	40	260	↑	1%
Non-Official Language	1,660	1,140	2,570	3,995	↑	19%

* Statistics Canada defines 'mother tongue' as the first language learned in childhood and still understood by the individual at the time of census reporting.

Non-Official Languages Spoken Top 10 Reported	1996	2001	2006	2011	Change From Previous Period	As a % of Neighbourhood
1. Arabic	N.A.	N.A.	N.A.	590		3%
2. Polish	N.A.	N.A.	N.A.	335		2%
3. German	N.A.	N.A.	N.A.	305		1%
4. Italian	N.A.	N.A.	N.A.	280		1%
5. Dutch	N.A.	N.A.	N.A.	190		1%
6. Portuguese	N.A.	N.A.	N.A.	180		1%
7. Kurdish	N.A.	N.A.	N.A.	150		1%
8. Greek	N.A.	N.A.	N.A.	150		1%
9. Russian	N.A.	N.A.	N.A.	140		1%
10. Hungarian	N.A.	N.A.	N.A.	115		1%

Religious Identification	1996	2001	2006	2011	Change From Previous Period	As a % of Neighbourhood
Buddhist	N.A.	N.A.	N.A.	35		<1%
Christian	N.A.	N.A.	N.A.	14,055		66%
Anglican	N.A.	N.A.	N.A.	2,005		9%
Baptist	N.A.	N.A.	N.A.	695		3%
Catholic	N.A.	N.A.	N.A.	5,510		26%
Orthodox	N.A.	N.A.	N.A.	465		2%
Lutheran	N.A.	N.A.	N.A.	315		1%
Pentecostal	N.A.	N.A.	N.A.	420		2%
Presbyterian	N.A.	N.A.	N.A.	690		3%
United Church	N.A.	N.A.	N.A.	1,960		9%
Other Christian	N.A.	N.A.	N.A.	1,995		9%
Hindu	N.A.	N.A.	N.A.	55		<1%
Jewish	N.A.	N.A.	N.A.	35		<1%
Muslim	N.A.	N.A.	N.A.	780		4%
Sikh	N.A.	N.A.	N.A.	0		0%
Aboriginal Spirituality	N.A.	N.A.	N.A.	0		0%

Notes:

- (1) Source Data –Statistics Canada. 1996-2011 Census Data, Customized Profiles. Ottawa, Canada
- (2) Data also derived from Statistics Canada’s National Household Survey (NHS)
- (3) Customized Community and Neighbourhood Profiles tabulated and compiled by the City of London’s Planning Division –Policy Planning and Research Section.