

Carling Neighbourhood Profile

For further information contact:

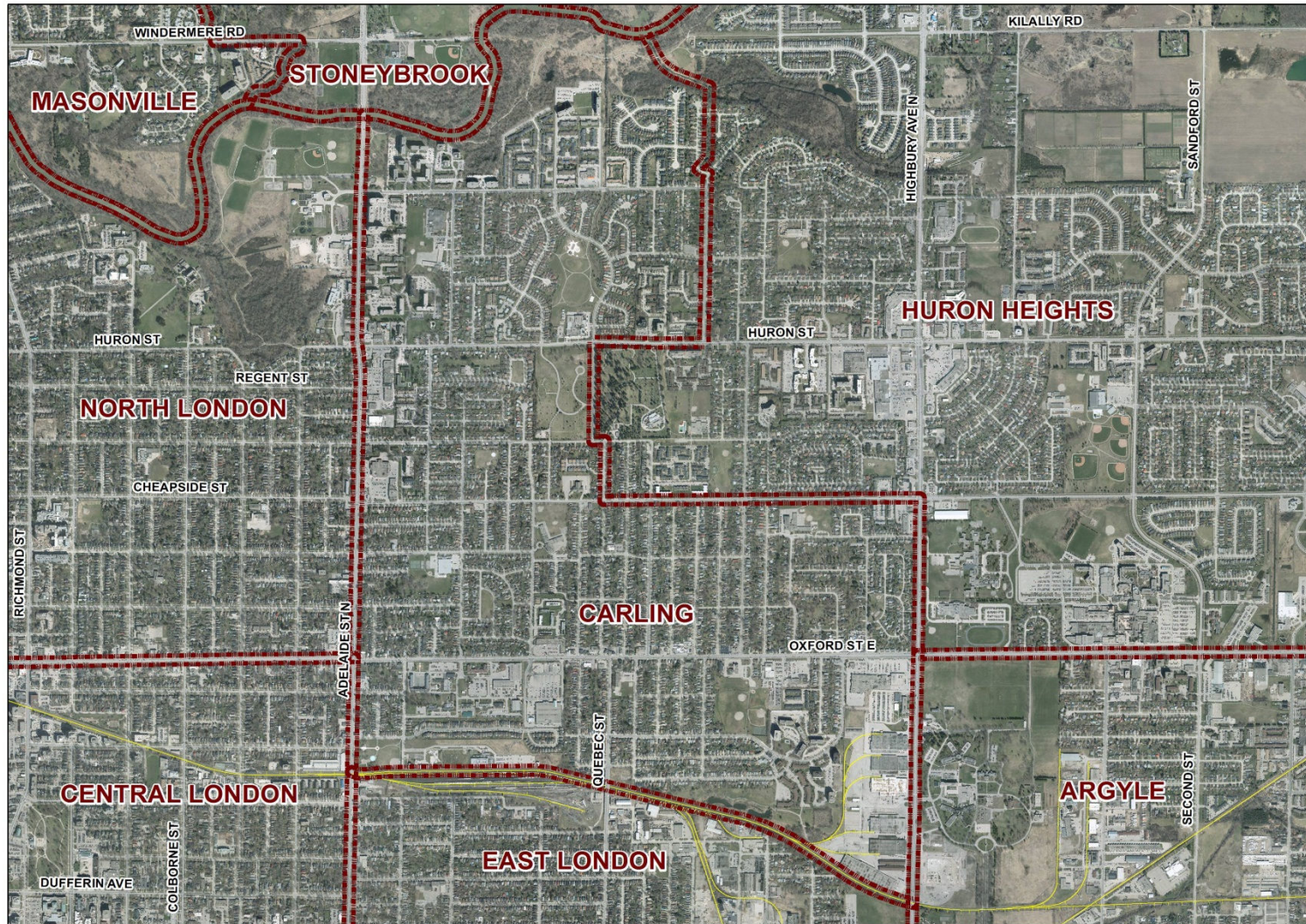
John-Paul Sousa

Planning Research Analyst

Direct: (519) 661-2500 ext. 5989 | email: jpsousa@london.ca

Date Created: Jan. 2014

Neighbourhood Profile -Carling Planning District



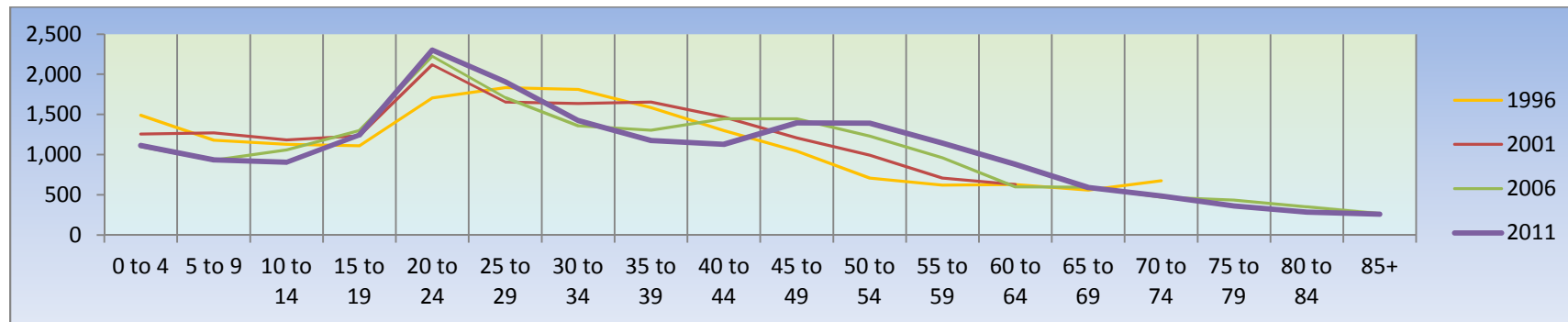
Coordinate System: NAD 1983 UTM Zone 17N
Projection: Transverse Mercator
Datum: North American 1983

Population Characteristics & Age Distribution

Carling Neighbourhood	1996	2001	2006	2011	Change From Previous Period	
Total Population	18,310	19,140	18,790	18,920	↑	<1%
Female	9,625	9,960	9,740	9,735	↓	(<-1%)
Male	8,690	9,180	9,050	9,180	↑	1%

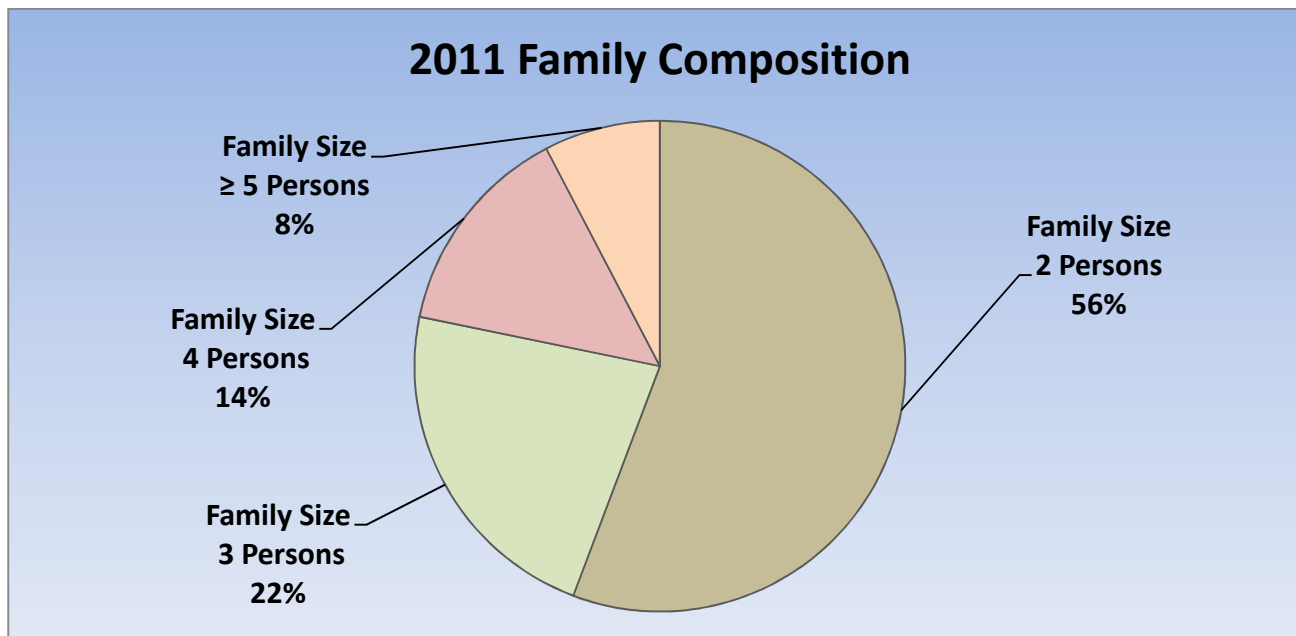
Age Structure	1996	2001	2006	2011	Change From Previous Period		As a % of Neighbourhood
0-19	4,365	4,950	4,390	4,200	↓	(-4%)	22%
0 to 4	1,490	1,255	1,100	1,115	↑	1%	6%
5 to 9	1,180	1,270	930	935	↑	<1%	5%
10 to 14	1,130	1,185	1,060	905	↓	(-15%)	5%
15 to 19	1,110	1,235	1,300	1,245	↓	(-4%)	7%
20-44	8,780	8,540	8,045	7,935	↓	(-1%)	42%
45-64	3,005	3,550	4,245	4,810	↑	13%	25%
65+	2,165	2,100	2,115	1,980	↓	(-6%)	10%
Median Age	NA	NA	NA	33.5			

2011 Census Age Cohort Breakout	Male	Female	Total	As a % of Neighbourhood
0 to 4	560	555	1,115	5.90%
5 to 9	465	465	930	4.92%
10 to 14	450	455	905	4.79%
15 to 19	615	625	1,240	6.56%
20 to 24	1,130	1,170	2,300	12.17%
25 to 29	975	930	1,905	10.08%
30 to 34	700	725	1,425	7.54%
35 to 39	600	575	1,175	6.22%
40 to 44	570	560	1,130	5.98%
45 to 49	715	680	1,395	7.38%
50 to 54	660	725	1,385	7.33%
55 to 59	500	645	1,145	6.06%
60 to 64	410	470	880	4.66%
65 to 69	270	320	590	3.12%
70 to 74	210	275	485	2.57%
75 to 79	155	205	360	1.90%
80 to 84	105	175	280	1.48%
85+	75	180	255	1.35%
Total	9,165	9,735	18,900	



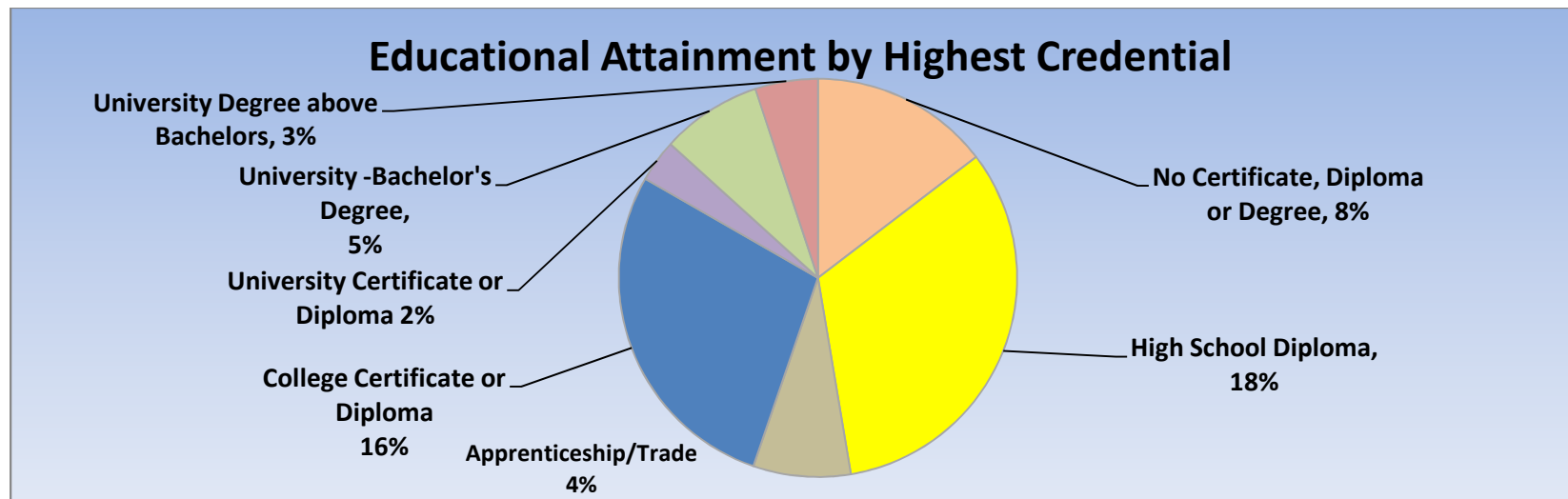
Marital Status	1996	2001	2006	2011	Change From Previous Period	As a % of Neighbourhood
Single	5,330	6,140	6,830	5,810	↓ (-15%)	31%
Married	6,090	5,970	5,765	5,360	↓ (-7%)	28%
Common-Law	1,210	1,720	1,985	2,115	↑ 7%	11%
Divorced	1,405	1,555	1,450	1,205	↓ (-17%)	6%
Separated	745	820	715	675	↓ (-6%)	4%
Widowed	940	945	940	810	↓ (-14%)	4%
Citizenship, Immigration & Ethnic Identity	1996	2001	2006	2011	Change From Previous Period	As a % of Neighbourhood
Citizenship						
Canadian Citizens	17,135	17,485	17,290	17,850	↑ 3%	94%
Non-Canadian Citizens	1,180	1,655	1,500	1,290	↓ (-14%)	7%
Immigration Status						
Canadian Born Population	14,135	14,695	14,460	15,075	↑ 4%	80%
Foreign Born Population	4,080	4,215	4,070	3,690	↓ (-9%)	20%
Visible Minority Population	2,280	2,725	3,030	3,325	↑ 10%	18%
Aboriginal Identity Population	315	355	330	935	↑ 183%	5%

Family Composition	1996	2001	2006	2011	Change From Previous Period	As a % of Neighbourhood
Number of Census Families	4,795	5,065	5,020	4,960	↓ (-1%)	
Family Size - 2 Persons	2,415	2,625	2,590	2,765	↑ 7%	56%
Family Size - 3 Persons	1,155	1,115	1,220	1,115	↓ (-9%)	22%
Family Size - 4 Persons	785	850	825	700	↓ (-15%)	14%
Family Size - ≥ 5 Persons	440	475	385	380	↓ (-1%)	8%
Census Family - Average Size	3	3	3	2.8	↓	



Family Structure & Number of Children	1996	2001	2006	2011	Change From Previous Period	
Married Couples	2,995	2,945	2,840	2,610	↓	(-8%)
Without Children	1,320	1,255	1,190	1,225	↑	3%
With Children	1,675	1,690	1,640	1,380	↓	(-16%)
Common-Law	605	855	990	1,055	↑	7%
Without Children	385	520	635	660	↑	4%
With Children	225	345	355	395	↑	11%
Lone Parent Families	1,190	1,265	1,190	1,295	↑	9%
Female Headed	1,085	1,125	890	1,060	↑	19%
1 Child	640	755	550	700	↑	27%
2 Children	305	260	265	250	↓	(-1%)
≥ 3 Children	140	110	75	105	↑	40
Male Headed	100	135	300	235	↓	(-22%)
1 Child	75	95	205	180	↓	(-12%)
2 Children	25	35	65	45	↓	(-31%)
≥ 3 Children	0	10	25	15	↓	(-40%)

Educational Attainment by Credential	1996	2001	2006	2011	Change From Previous Period	As a % of Neighbourhood
No Certificate, Diploma or Degree	N.A.	2,885	2,740	1,535	↓ (-44%)	8%
High School Diploma or Equivalent	N.A.	N.A.	5,290	3,440	↓ (-35%)	18%
Apprenticeship, or Trade Certificate	N.A.	1,625	1,300	830	↓ (-36%)	4%
College Certificate or Diploma	N.A.	N.A.	N.A.	2,945	— —	16%
University Certificate or Diploma	N.A.	N.A.	N.A.	360	— —	2%
University -Bachelor's Degree	N.A.	N.A.	1,060	860	↓ (-19%)	5%
University Degree above bachelor level (M.A. or PhD)	N.A.	N.A.	310	535	↑ 73%	3%

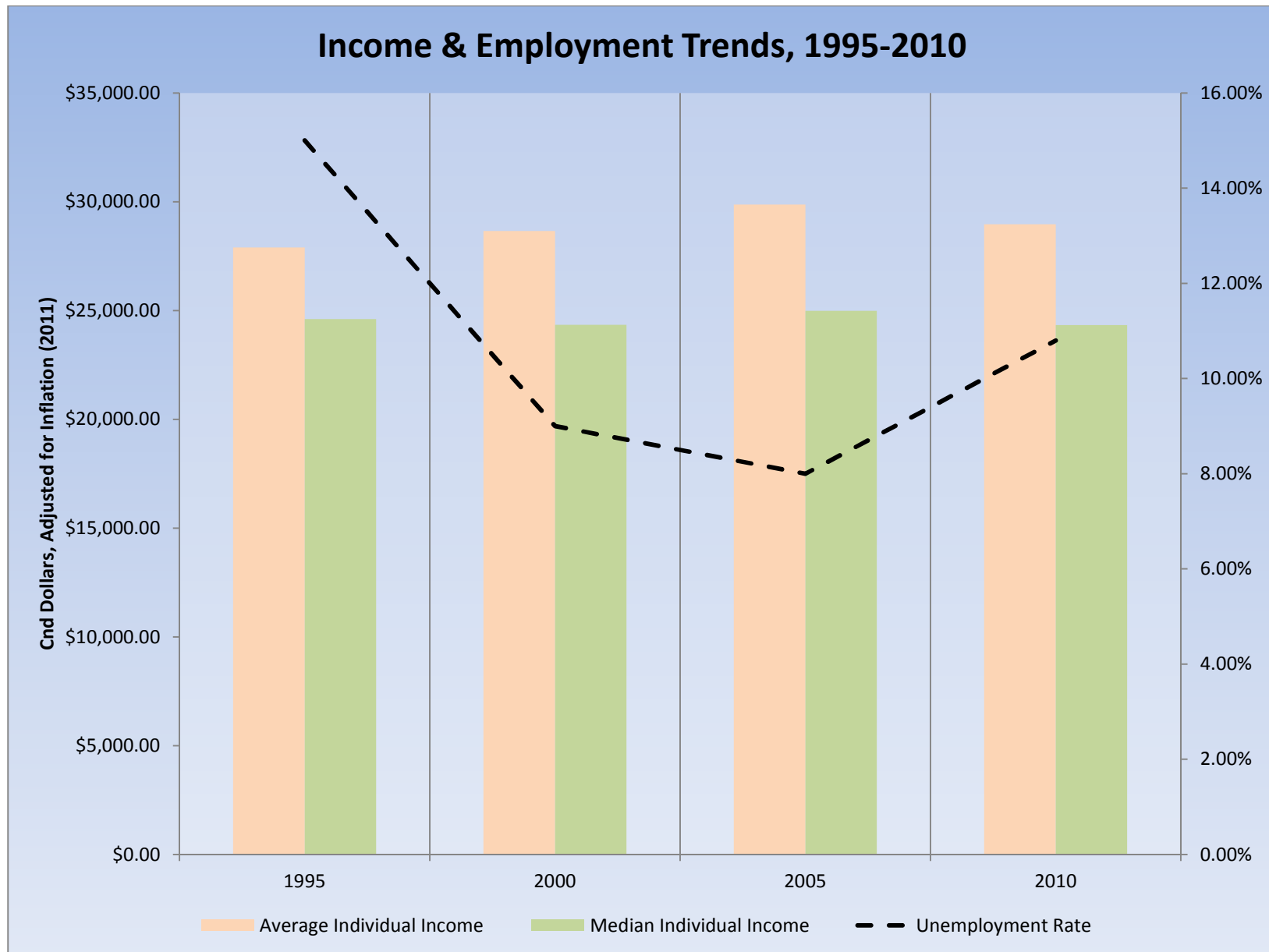


Housing by Structure Type & Tenure	1996	2001	2006	2011	Change From Previous Period	As a % of Neighbourhood
Total Occupied Dwellings	7,900	8,405	8,310	8,550	3%	
Single-Detached	3,260	3,345	3,190	3,330	4%	39%
Semi-Detached	285	295	280	310	11%	4%
Row House	815	950	1,075	1,010	(<-1%)	12%
Duplex	235	190	350	340	(-3%)	4%
Apartment < 5 Storeys	845	855	950	740	(-22%)	9%
Apartment ≥ 5 Storeys	2,440	2,760	2,455	2,815	15%	33%
Number of Owned Dwellings	3,420	3,665	3,675	3,665	(<-1%)	
Owned as a % of Total	43%	44%	44%	43%		43%
Number of Rented Dwellings	4,475	4,735	4,635	4,910		
Rented as a % of Total	57%	56%	56%	57%		57%
Average # of Rooms	6	6	6	5.6		
Average # of Bedrooms	2	2	2	N.A.	-	
Average Gross Rent	\$651.00	\$612.00	\$712.00	\$753.00	6%	
Average Value of Dwelling	\$118,343.00	\$113,627.00	\$148,529	\$180,447.00	21%	

Labour Market Indicators	1996	2001	2006	2011	Change From Previous Period	As a % of Neighbourhood
Total Labour Force ≥ 15 years	9,250	10,105	10,550	10,245	↓ (-3%)	
Female	4,470	4,805	5,085	5,030	↓ (-1%)	49%
Male	4,785	5,305	5,470	5,210	↓ (-5%)	51%
Unemployment Rate	15%	9%	8%	10.80%	↑	
Female	15%	8%	8%	8.30%	↑	
Male	15%	10%	7%	13.20%	↑	
Employment Rate	N.A.	N.A.	N.A.	57.20%	—	
Participation Rate	64%	66%	67%	64.20%	↓	
Female	58%	59%	62%	60.60%	↓	
Male	71%	74%	73%	68.00%	↓	
Labour Force by Sector						
Primary (Agriculture & Resources)	80	70	35	110	↑ 214%	1%
Secondary (Construction & Manufacturing)	2,005	2,070	2,355	2,320	↓ (-1%)	24%
Tertiary Services	6,615	7,795	7,855	7,380	↓ (-6%)	75%

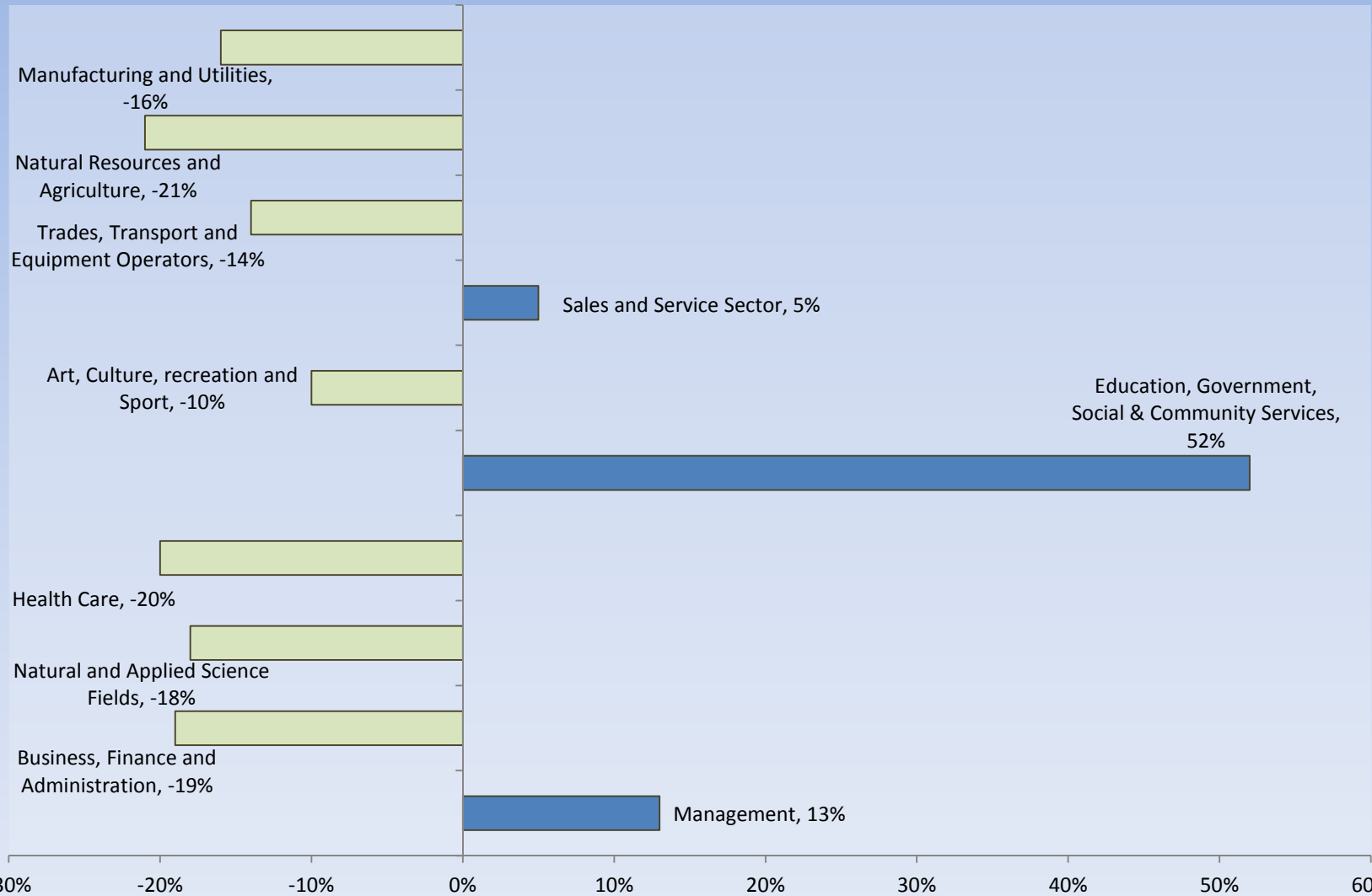
Income Characteristics of Economically Active Population	1996	2001	2006	2011	Change From Previous Period	
Individual Income						
Average Income	\$20,373.00	\$22,599.00	\$26,575.00	\$28,045.00	↑	6%
Median Income	\$17,970.00	\$19,204.00	\$22,229.00	\$23,564.00	↑	6%
Income by Gender						
Average Income – Male	\$23,735.00	\$26,274.00	\$30,629.00	\$30,363.00	↓	(<-1%)
Average Income - Female	\$17,011.00	\$18,924.00	\$22,864.00	\$25,869.00	↑	13%
Median Income – Male	\$21,625.00	\$22,794.00	\$27,741.00	\$25,316.00	↓	(-9%)
Median Income - Female	\$14,315.00	\$15,614.00	\$18,933.00	\$21,746.00	↑	15%
Household Income						
Average Household Income	\$34,203.00	\$38,909.00	\$47,437.00	\$49,445.00	↑	4%
Median Household Income	\$30,432.00	\$32,870.00	\$41,805.00	\$42,272.00	↑	1%
Family Income						
Average Family Income	\$38,798.00	\$44,314.00	\$52,970.00	\$59,955.00	↑	13%
Median Family Income	\$35,884.00	\$40,153.00	\$52,970.00	\$52,253.00	↓	(-1%)
Lone-Parent Families						
Average Family Income	N.A.	N.A.	N.A.	\$32,614.00	—	
Median Family Income	N.A.	N.A.	N.A.	\$26,813.00	—	

Data Note: Income figures based on previous reporting year (1995, 2000, 2005 & 2010).



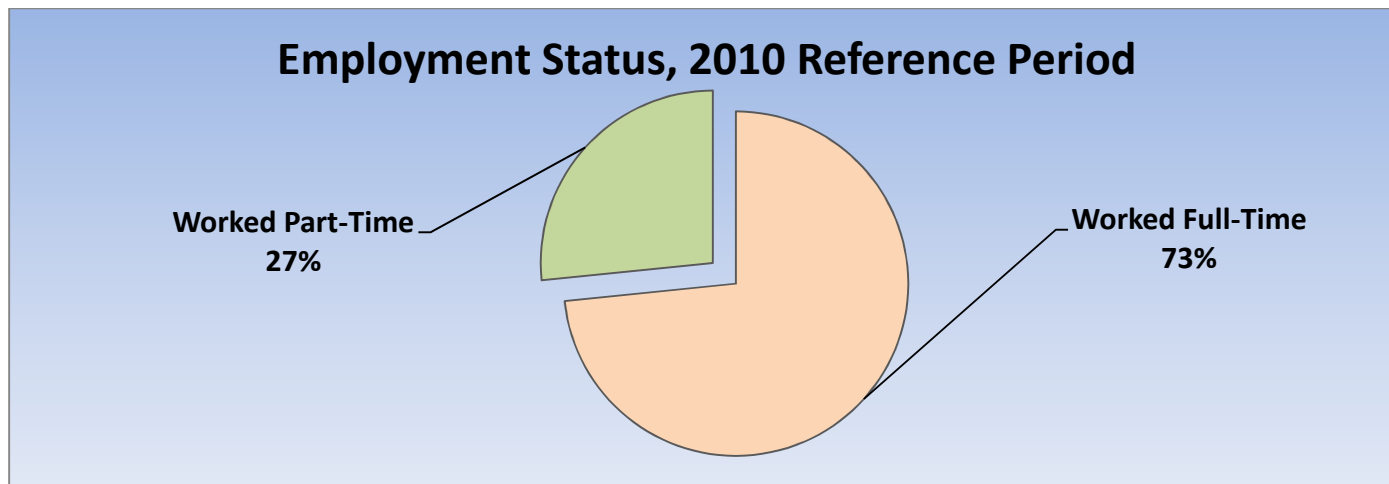
Labour Force by National Occupational Classification	1996	2001	2006	2011	Change From Previous Period	As a % of Labour Force
Management	525	580	560	630	↑ 13%	6%
Business, Finance and Administration	1,660	1,550	1,695	1,365	↓ (-19%)	14%
Natural and Applied Science Fields	315	605	645	530	↓ (-18%)	5%
Health Care	420	455	580	465	↓ (-20%)	5%
Education, Government, Social & Community Services	414	695	690	1,050	↑ 52%	11%
Art, Culture, recreation and Sport	260	190	210	190	↓ (-10%)	2%
Sales and Service Sector	2,810	3,025	3,010	3,150	↑ 5%	32%
Trades, Transport and Equipment Operators	1,235	1,615	1,690	1,450	↓ (-14%)	15%
Natural Resources and Agriculture	120	165	140	110	↓ (-21%)	1%
Manufacturing and Utilities	935	995	1,035	870	↓ (-16%)	9%

Employment Trends by Occupational Breakout, 2006-2011



Class of Worker	1996	2001	2006	2011	Change From Previous Period	As a % Neighbourhood
Employee	8,035	9,245	9,695	9,350	↓ (-4%)	95%
Female	3,870	4,405	4,795	4,670		
Male	4,165	4,835	4,900	4,685		
Self-Employed	650	655	585	455	↓ (-22%)	5%
Female	240	225	185	165		
Male	410	405	405	295		

Employment Status	1996	2001	2006	2011	Change From Previous Period	As a % of Active Labour Force
Worked Full-Time in 2010	N.A.	N.A.	N.A.	3,445	N.A.	73%
Worked Part-Time in 2010	N.A.	N.A.	N.A.	1,250	N.A.	27%



Mode of Transport to Work	1996	2001	2006	2011	Change From Previous Period	As a % of Neighbourhood
Automobile -As a Driver	5,140	5,915	6,195	5,790	↓ (-7%)	66%
Car-Pool	670	820	920	645	↓ (-30%)	7%
Public Transportation	965	1,335	1,455	1,400	↓ (-4%)	16%
Walked or Bicycled	650	665	830	880	↑ 6%	10%
Other Modes	20	100	75	55	↓ (-27%)	1%
Median Commuting Duration	N.A.	N.A.	N.A.	20 min		

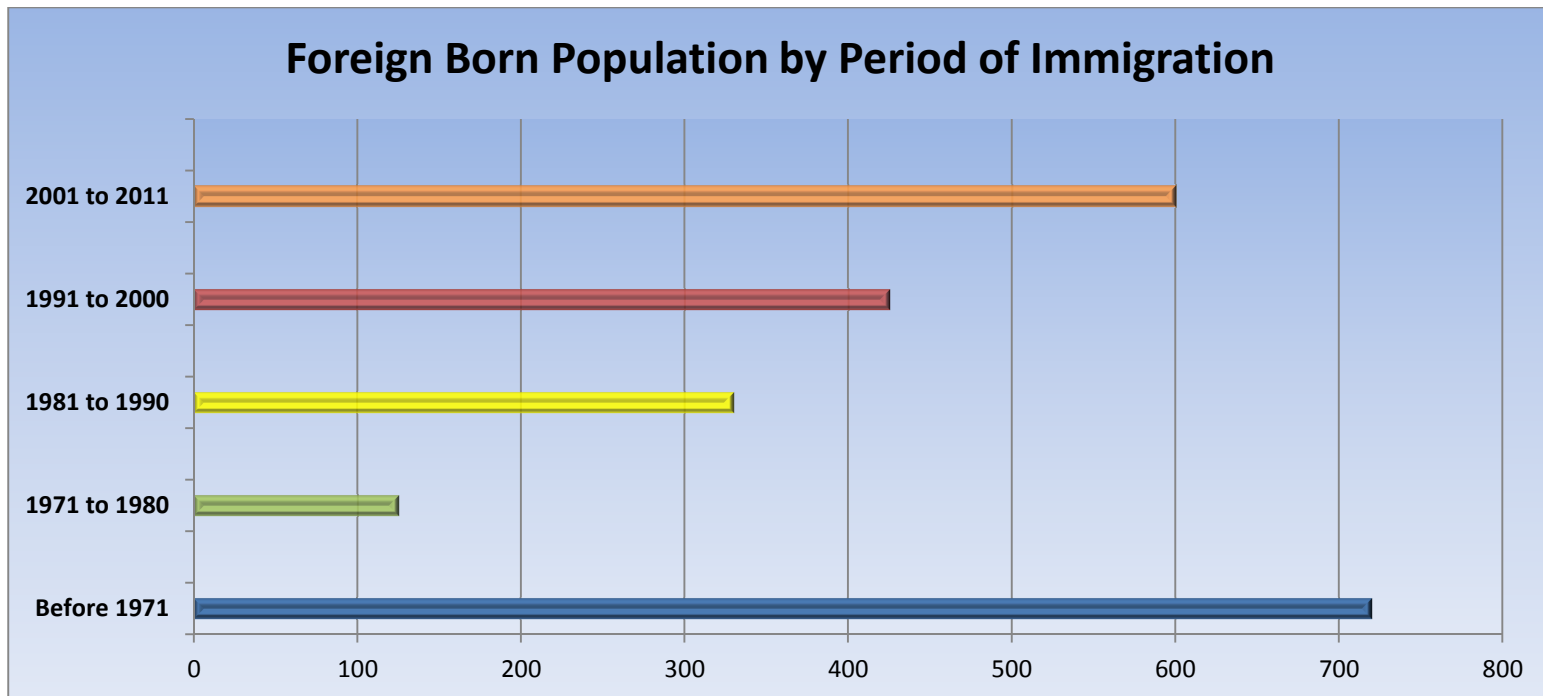
Place of Work	1996	2001	2006	2011	Change From Previous Period	As a % of Neighbourhood
Worked at Home	310	320	260	345	↑ 33%	4%
Worked at a Fixed Address	6,995	8,000	8,400	7,800	↓ (-7%)	86%
No Fixed Workplace Address	515	880	1,070	965	↓ (-10%)	11%
Worked within Municipality	6,110	7,310	7,580	N.A.	— —	
Work in a different Municipality	680	685	815	N.A.	— —	
Worked outside Canada	40	25	25	25	— —	

Mobility/Migration Status	1996	2001	2006	2011	Change From Previous Period	As a % of Neighbourhood
Lived at the same address 5 years ago	7,030	7,785	8,020	7,910	↓	44%
Moved sometime with the last 5 years	9,785	10,085	9,650	10,055	↑ 4%	56%
Internal Migrants	2,340	2,755	2,495	2,770	↑ 11%	70%
- Intra-provincial	1,930	2,330	2,105	2,540	↑	
- Inter-provincial	410	430	395	235	↓	
External Migrants	840	1,260	1,190	1,165	↓ (-2%)	30%
Lived at the same address 1 years ago	12,930	14,460	14,950	14,615	↓ (-2%)	78%
Moved sometime with the last year	5,060	4,400	3,570	4,235	↑ 19%	22%
Internal Migrants	1,170	1,260	870	950	↑ 9%	78%
- Intra-provincial	910	970	650	880	↑ 35%	
- Inter-provincial	260	290	225	75	↓ (-67%)	
External Migrants	230	435	240	270	↑ 13%	22%

Place of Birth	1996	2001	2006	2011	Change From Previous Period		As a % of Neighbourhood
Total Immigrant Population	N.A.	N.A.	4,070	3,695	↓	(-9%)	20%
Place of Birth by Continent							
North America (US only)	N.A.	N.A.	150	130	↓	(-13%)	1%
Africa	N.A.	N.A.	515	265	↓	(-49%)	1%
Asia	N.A.	N.A.	1,050	1,270	↑	21%	7%
Caribbean	N.A.	N.A.	155	85	↓	(-45%)	<1%
Central and South America	N.A.	N.A.	265	320	↑	21%	2%
Europe	N.A.	N.A.	1,935	1,540	↓	(-20%)	8%
Recent Immigration by Continent, 2006-2011							
Recent Immigrants	N.A.	N.A.	1,185	840	↓	(-29%)	4%
North America (US only)	N.A.	N.A.	55	0	↓	(-100%)	0%
Africa	N.A.	N.A.	390	140	↓	(-64%)	1%
Asia	N.A.	N.A.	420	420	—	—	2%
Caribbean	N.A.	N.A.	50	0	↓	(-100%)	0%
Central and South America	N.A.	N.A.	130	105	↓	(-19%)	1%
Europe	N.A.	N.A.	140	110	↓	(-21%)	1%

Immigration by Place of Birth	1996	2001	2006	2011	Change From Previous Period	As a % of Neighbourhood
1. United Kingdom	N.A.	N.A.	485	340	↓ (-30%)	2%
2. Viet Nam	N.A.	N.A.	230	225	↓ (-2%)	1%
3. Philippines	N.A.	N.A.	N.A.	180	—	1%
4. Poland	N.A.	N.A.	295	180	↓ (-39%)	1%
5. El Salvador	N.A.	N.A.	N.A.	165	—	1%
6. United States	N.A.	N.A.	150	130	↓ (-13%)	1%
7. Colombia	N.A.	N.A.	N.A.	120		<1%
8. Bosnia	N.A.	N.A.	N.A.	115		<1%
9. Iraq	N.A.	N.A.	N.A.	110		<1%
10. Portugal	N.A.	N.A.	N.A.	105		<1%

Period of Immigration	1996	2001	2006	2011	Change From Previous Period	As a % of Neighbourhood
Before 1971	N.A.	N.A.	1,005	720	↓ (-28%)	4%
1971 to 1980	N.A.	N.A.	260	125	↓ (-52%)	1%
1981 to 1990	N.A.	N.A.	680	330	↓ (-51%)	2%
1991 to 2000	N.A.	N.A.	940	425	↓ (-55%)	2%
2001 to 2011	N.A.	N.A.	N.A.	600	—	3%



Language	1996	2001	2006	2011	Change From Previous Period		As a % of Neighbourhood
Knowledge of Official Languages							
English Only	16,875	17,620	17,375	17,435	↑	<1%	92%
French Only	0	0	40	10	↓	(-75%)	<1%
English and French	1,120	1,200	1,145	1,125	↓	(-2%)	6%
Neither English or French	320	315	230	330	↑	43%	2%
Language Spoken Most Often at Home							
English	15,445	15,370	16,045	16,025	↓	(<-1%)	85%
French	60	40	130	60	↓	(-54%)	<1%
Non-Official Language	2,265	1,350	2,265	2,210	↓	(-2%)	12%
Mother Tongue *							
English	14,190	14,760	14,405	14,615	↑	1%	77%
French	265	255	295	245	↓	(-17%)	1%
Non-Official Language	3,515	3,925	3,930	3,735	↓	(-5%)	20%

* Statistics Canada defines 'mother tongue' as the first language learned in childhood and still understood by the individual at the time of census reporting.

Non-Official Languages Spoken Top 10 Reported	1996	2001	2006	2011	Change From Previous Period	As a % of Neighbourhood
1. Spanish	N.A.	N.A.	520	635	↑ 22%	3%
2. Vietnamese	N.A.	N.A.	380	345	↓ (-9%)	2%
3. Chinese*	N.A.	N.A.	175	280	↑ 60%	1%
4. Arabic	N.A.	N.A.	430	270	↓ (-37%)	1%
5. German	N.A.	N.A.	160	225	↑ 41%	1%
6. Polish	N.A.	N.A.	365	215	↓ (-41%)	1%
7. Albanian	N.A.	N.A.	N.A.	195	— -	1%
8. Italian	N.A.	N.A.	195	190	↓ (-3%)	1%
9. Tagalog (Filipino)	N.A.	N.A.	N.A.	190	— -	1%
10. Portuguese	N.A.	N.A.	250	185	↓ (-26%)	1%

* Refers to Cantonese and Mandarin language speakers as well as others who do not specify otherwise.

Religious Identification	1996	2001	2006	2011	Change From Previous Period	As a % of Neighbourhood
Buddhist	N.A.	N.A.	N.A.	320		2%
Christian	N.A.	N.A.	N.A.	10,130		54%
Anglican	N.A.	N.A.	N.A.	1,340		7%
Baptist	N.A.	N.A.	N.A.	480		3%
Catholic	N.A.	N.A.	N.A.	4,150		22%
Orthodox	N.A.	N.A.	N.A.	365		2%
Lutheran	N.A.	N.A.	N.A.	175		1%
Pentecostal	N.A.	N.A.	N.A.	300		2%
Presbyterian	N.A.	N.A.	N.A.	330		2%
United Church	N.A.	N.A.	N.A.	985		5%
Other Christian	N.A.	N.A.	N.A.	2,020		11%
Hindu	N.A.	N.A.	N.A.	270		1%
Jewish	N.A.	N.A.	N.A.	55		<1%
Muslim	N.A.	N.A.	N.A.	605		3%
Sikh	N.A.	N.A.	N.A.	0		0%
Aboriginal Spirituality	N.A.	N.A.	N.A.	20		<1%

Notes:

- (1) Source Data –Statistics Canada. 1996-2011 Census Data, Customized Profiles. Ottawa, Canada
- (2) Data also derived from Statistics Canada’s National Household Survey (NHS)
- (3) Customized Community and Neighbourhood Profiles tabulated and compiled by the City of London’s Planning Division –Policy Planning and Research Section.