



Byron Neighbourhood Profile

For further information contact:

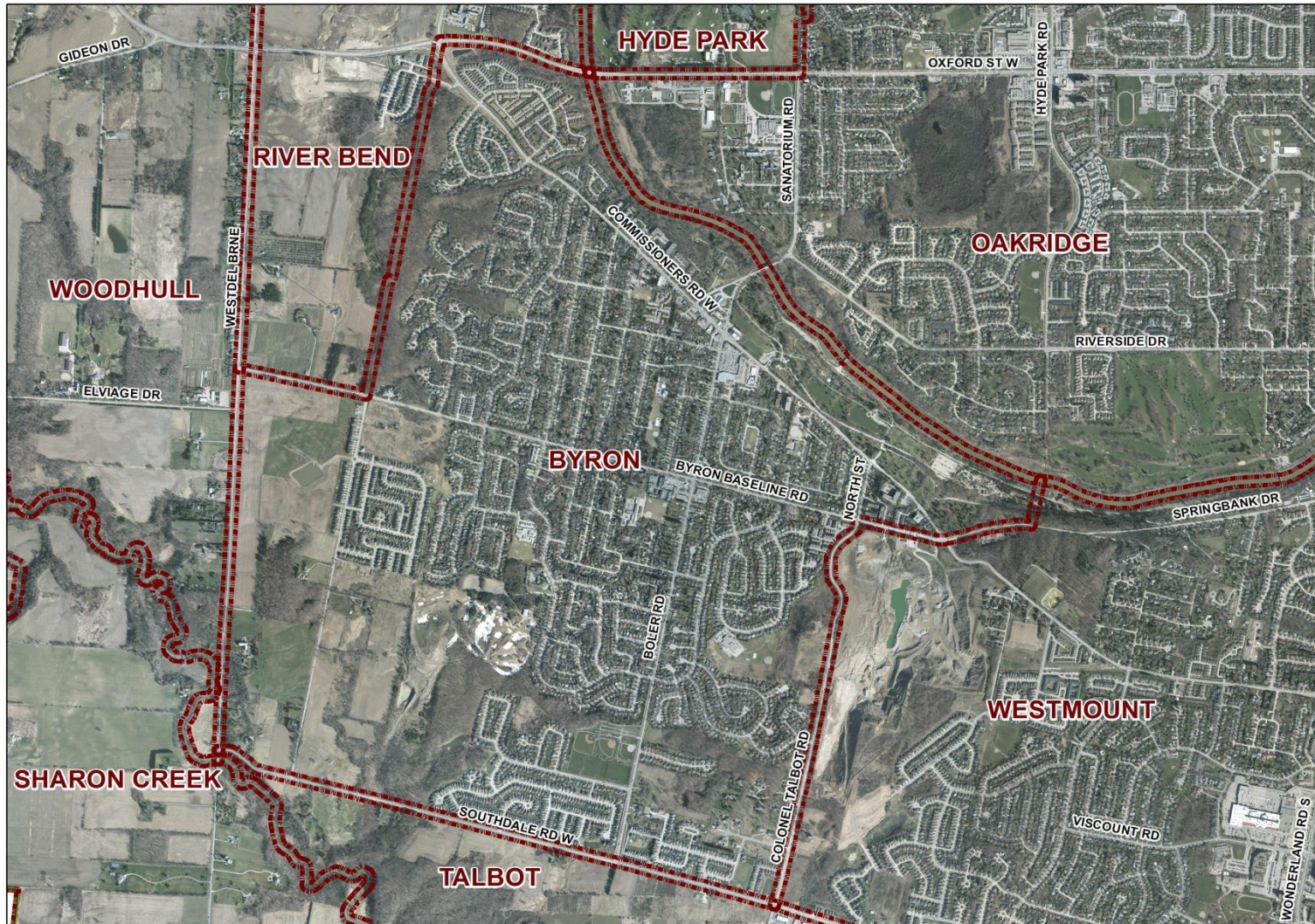
John-Paul Sousa

Planning Research Analyst

Direct: (519) 661-2500 ext. 5989 | email: jpsousa@london.ca

Date Created: Jan. 2014

Neighbourhood Profile -Byron Planning District



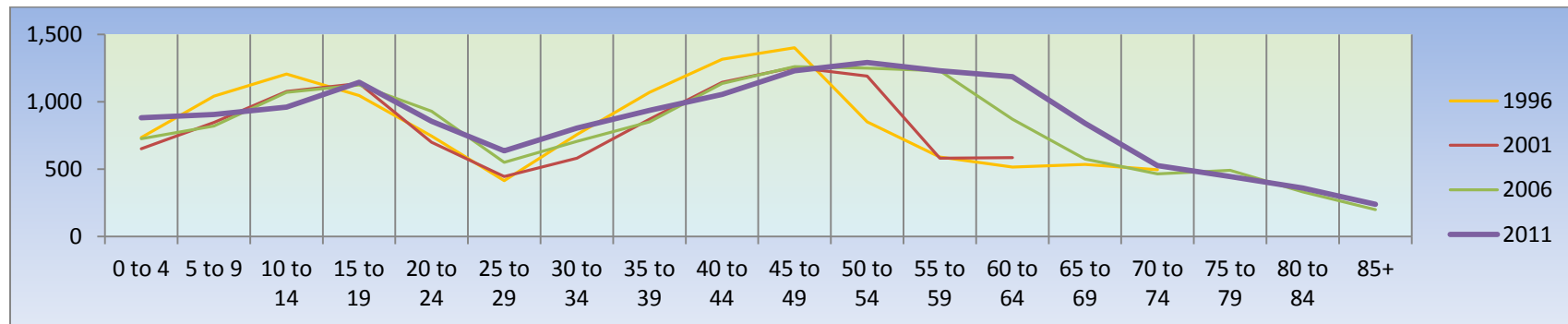
Coordinate System: NAD 1983 UTM Zone 17N
Projection: Transverse Mercator
Datum: North American 1983

Population Characteristics & Age Distribution

Byron Neighbourhood	1996	2001	2006	2011	Change From Previous Period	
Total Population	13,335	13,110	14,585	15,525	↑	6%
Female	6,845	6,810	7,605	7,930	↑	4%
Male	6,490	6,300	6,980	7,595	↑	9%

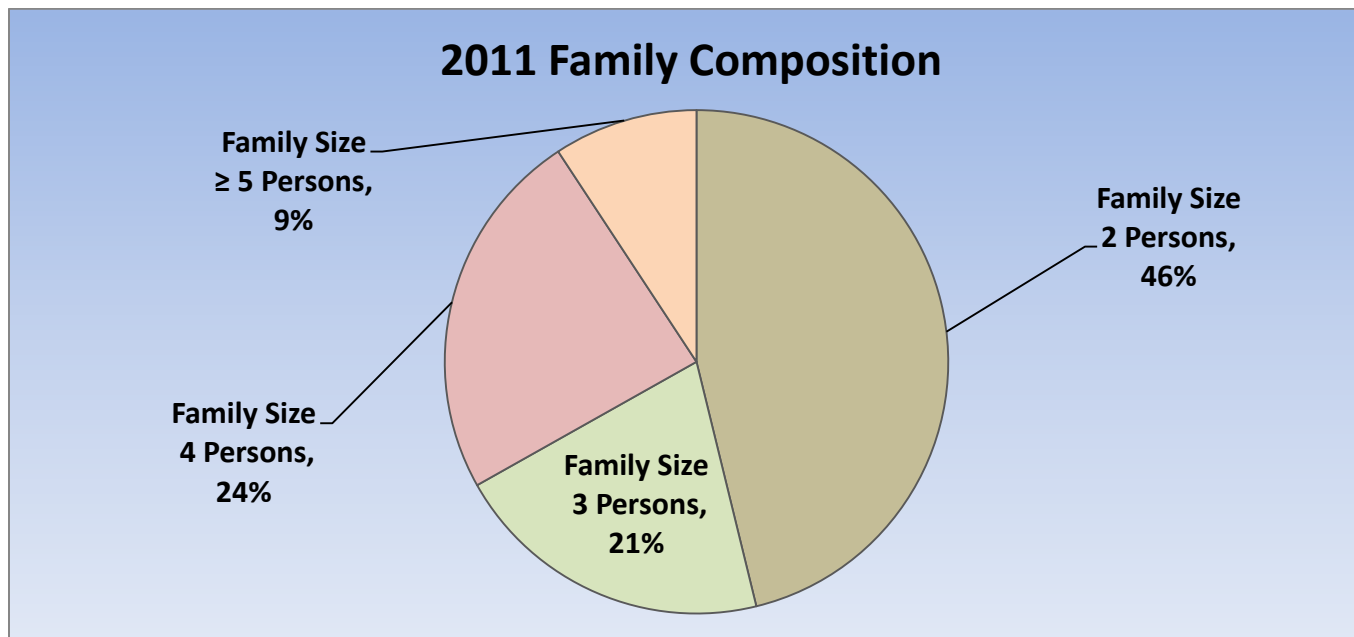
Age Structure	1996	2001	2006	2011	Change From Previous Period		As a % of Neighbourhood
0-19	4,025	3,705	3,740	3,895	↑	4%	25%
0 to 4	735	650	725	885	↑	22%	6%
5 to 9	1,040	845	820	905	↑	10%	6%
10 to 14	1,205	1,075	1,070	960	↓	(-10%)	6%
15 to 19	1,045	1,135	1,125	1,145	↑	2%	7%
20-44	4,300	3,740	4,170	4,270	↑	2%	27%
45-64	3,355	3,830	4,610	4,930	↑	7%	30%
65+	1,650	1,850	1,820	2,420	↑	33%	13%
Median Age	N.A.	N.A.	N.A.	43			

2011 Census Age Cohort Breakout	Male	Female	Total	As a % of Neighbourhood
0 to 4	480	400	880	5.67%
5 to 9	465	440	905	5.83%
10 to 14	505	455	960	6.19%
15 to 19	605	540	1,145	7.38%
20 to 24	455	400	855	5.51%
25 to 29	325	310	635	4.09%
30 to 34	390	415	805	5.19%
35 to 39	450	485	935	6.02%
40 to 44	505	550	1,055	6.80%
45 to 49	555	675	1,230	7.93%
50 to 54	615	675	1,290	8.31%
55 to 59	565	665	1,230	7.93%
60 to 64	570	615	1,185	7.64%
65 to 69	410	430	840	5.41%
70 to 74	260	265	525	3.38%
75 to 79	180	195	445	2.87%
80 to 84	165	145	360	2.32%
85+	95	145	240	1.55%
Total	7,595	7,925	15,520	



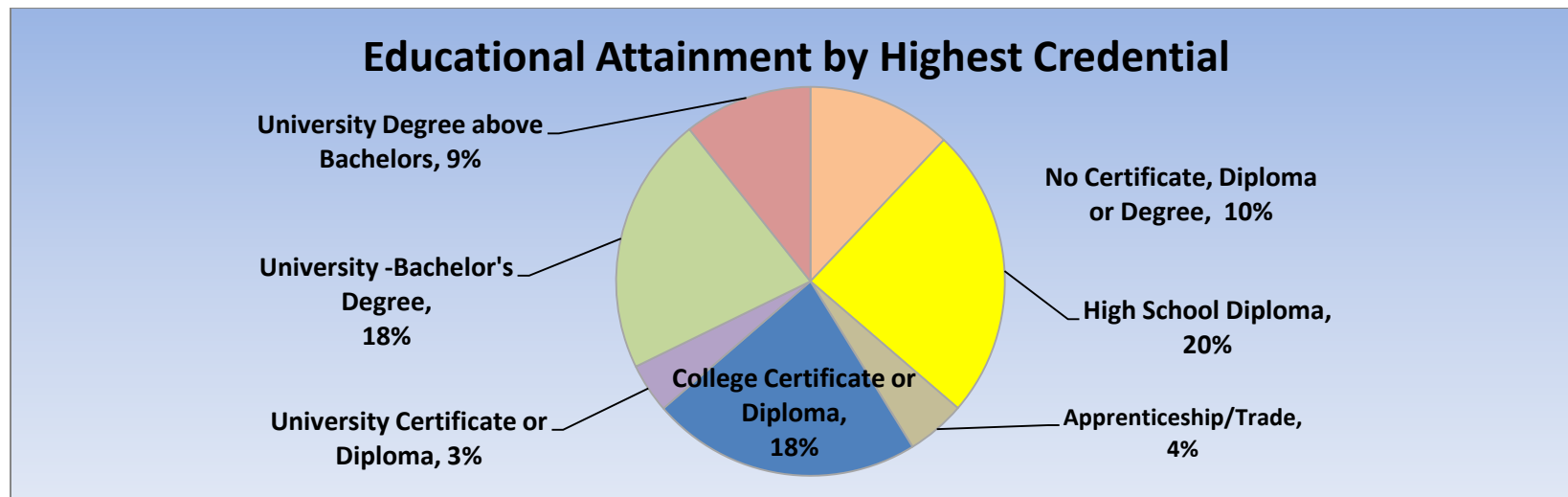
Marital Status	1996	2001	2006	2011	Change From Previous Period	As a % of Neighbourhood
Single	2,440	2,610	3,045	2,905	↓ (-5%)	19%
Married	6,590	6,540	7,245	7,695	↑ 6%	50%
Common-Law	320	360	510	640	↑ 25%	54%
Divorced	500	520	725	625	↓ (-14%)	4%
Separated	270	320	295	290	↓ (-2%)	2%
Widowed	545	550	650	610	↓ (-6%)	4%
Citizenship, Immigration & Ethnic Identity	1996	2001	2006	2011	Change From Previous Period	As a % of Neighbourhood
Citizenship						
Canadian Citizens	13,050	12,825	14,205	15,120	↑ 6%	97%
Non-Canadian Citizens	280	290	380	330	↓ (-13%)	2%
Immigration Status						
Canadian Born Population	11,305	11,275	12,285	13,300	↑ 8%	86%
Foreign Born Population	2,000	1,820	2,250	2,120	↓ (-6%)	14%
Visible Minority Population	290	470	725	1,020	↑ 41%	7%
Aboriginal Identity Population	40	35	50	195	↑ 290%	1%

Family Composition	1996	2001	2006	2011	Change From Previous Period	As a % of Neighbourhood
Number of Census Families	3,785	3,845	4,335	4,650	↑ 7%	
Family Size - 2 Persons	1,405	1,625	1,955	2,145	↑ 10%	46%
Family Size - 3 Persons	765	695	840	960	↑ 14%	21%
Family Size - 4 Persons	1,120	1,085	1,095	1,110	↑ <1%	24%
Family Size - ≥ 5 Persons	495	435	440	430	↓ (-2%)	9%
Census Family - Average Size	3.20	3.10	3.00	3.00		



Family Structure & Number of Children	1996	2001	2006	2011	Change From Previous Period	
Married Couples	3,280	3,245	3,600	3,825	↑	6%
Without Children	1,155	1,270	1,480	1,655	↑	12%
With Children	2,130	1,975	2,120	2,165	↑	2%
Common-Law	160	180	255	320	↑	25%
Without Children	100	95	150	200	↑	33%
With Children	60	80	105	120	↑	14%
Lone Parent Families	335	415	480	505	↑	5%
Female Headed	295	335	360	405	↑	13%
1 Child	135	175	240	235	↓	(-2%)
2 Children	130	130	75	130	↑	73%
≥ 3 Children	30	35	45	45	—	—
Male Headed	40	75	115	105	↓	(-9%)
1 Child	15	75	25	65	↑	160%
2 Children	20	0	10	30	↑	200%
≥ 3 Children	0	0	10	10	—	—

Educational Attainment by Credential	1996	2001	2006	2011	Change From Previous Period	As a % of Neighbourhood
No Certificate, Diploma or Degree	N.A.	980	825	1,535	↑ 86%	10%
High School Diploma or Equivalent	N.A.	N.A.	3,195	3,095	↓ (-3%)	20%
Apprenticeship, or Trade Certificate	330	865	595	625	↑ 5%	4%
College Certificate or Diploma	N.A.	2,175	2,630	2,865	↑ 9%	18%
University Certificate or Diploma	N.A.	N.A.	140	525	↑ 275%	3%
University -Bachelor's Degree	N.A.	N.A.	2,020	2,745	↑ 36%	18%
University Degree above bachelor level (M.A. or PhD)	N.A.	N.A.	680	1,365	↑ 100%	9%

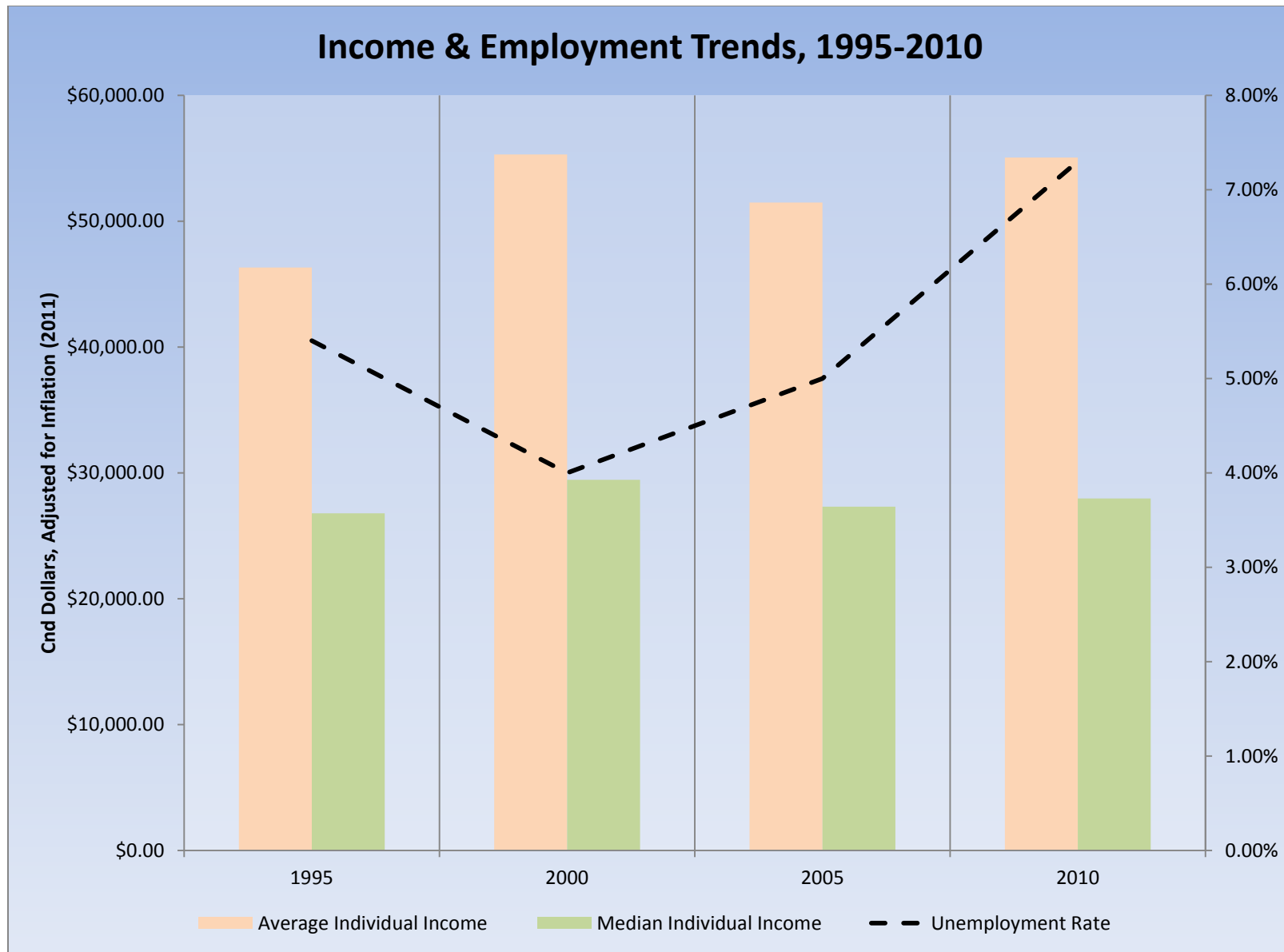


Housing by Structure Type & Tenure	1996	2001	2006	2011	Change From Previous Period	As a % of Neighbourhood
Total Occupied Dwellings	4,700	4,800	5,495	5,915	8%	
Single-Detached	3,495	3,590	4,055	4,505	11%	73%
Semi-Detached	20	45	45	290	544%	5%
Row House	645	680	850	815	(-4%)	13%
Duplex	25	10	0	25	100%	<1%
Apartment < 5 Storeys	220	135	225	220	(-2%)	4%
Apartment ≥ 5 Storeys	290	325	325	290	(-11%)	5%
Number of Owned Dwellings	3,830	4,170	4,870	5,305	9%	
Owned as a % of Total	81%	87%	89%	90%		
Number of Rented Dwellings	870	630	630	610	(-3%)	
Rented as a % of Total	19%	13%	11%	10%		
Average # of Rooms	7.80	8.00	8.00	8.00		
Average # of Bedrooms	3.10	3.10	3.10	N.A.		
Average Gross Rent	\$753.00	\$748.00	\$720.00	\$807.00	12%	
Average Value of Dwelling	\$187,287.00	\$191,403.00	\$252,551.00	\$310,896.00	23%	

Labour Market Indicators	1996	2001	2006	2011	Change From Previous Period		As a % of Neighbourhood
Total Labour Force ≥ 15 years	6,975	7,240	7,950	8,480	↑	7%	
Female	3,420	3,545	3,900	4,175	↑	7%	49%
Male	3,55	3,695	4,050	4,305	↑	6%	51%
Unemployment Rate	5.40%	4.00%	5.00%	7.30%	↑		
Female	5.70%	4.00%	5.00%	6.30%	↑		
Male	5.20%	4.00%	4.60%	8.20%	↑		
Employment Rate	N.A.	N.A.	N.A.	61.60%	–	–	
Participation Rate	67%	69%	66%	66.50%	↑		
Female	63%	64%	62%	63.00%	↑		
Male	72%	74%	72%	70.30%	↓		
Labour Force by Sector							
Primary (Agriculture & Resources)	35	70	90	65	↓	(-28%)	1%
Secondary (Construction & Manufacturing)	990	1,030	1,120	820	↓	(-27%)	10%
Tertiary Services	5,870	6,090	6,645	7,425	↑	12%	89%

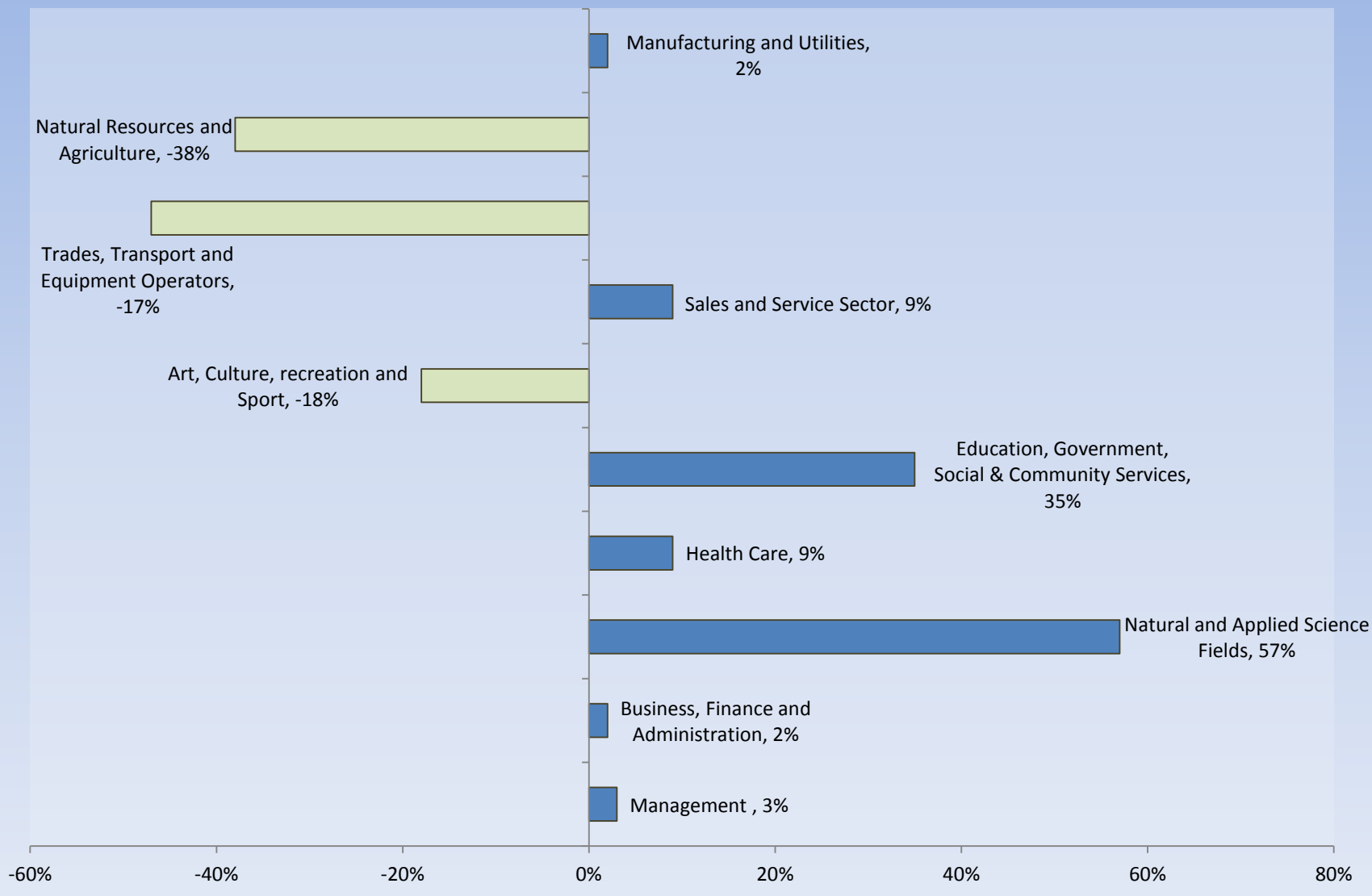
Income Characteristics of Economically Active Population	1996	2001	2006	2011	Change From Previous Period	
Individual Income						
Average Income	\$33,919.50	\$44,145.00	\$45,938.00	\$53,589.00	↑	17%
Median Income	\$29,403.50	\$35,327.00	\$36,657.00	\$42,263.00	↑	15%
Income by Gender						
Average Income – Male	\$44,223.00	\$57,942.00	\$56,718.00	\$64,215.00	↑	13%
Average Income - Female	\$23,616.00	\$30,349.00	\$36,330.00	\$43,709.00	↑	20%
Median Income – Male	\$39,793.00	\$46,276.00	\$46,944.00	\$49,065.00	↑	5%
Median Income - Female	\$19,014.00	\$24,378.00	\$28,613.00	\$35,074.00	↑	23%
Household Income						
Average Household Income	\$69,702.00	\$91,167.00	\$96,605.00	\$110,702.00	↑	15%
Median Household Income	\$61,815.00	\$75,142.00	\$82,391.00	\$90,346.00	↑	10%
Family Income						
Average Family Income	\$77,250.00	\$103,185.00	\$110,443.00	\$128,210.00	↑	16%
Median Family Income	\$69,380.00	\$83,837.00	\$95,932.00	\$104,421.00	↑	9%
Lone-Parent Families						
Average Family Income	N.A.	N.A.	N.A.	\$64,542.00		
Median Family Income	N.A.	N.A.	N.A.	\$50,806.00		

Data Note: Income figures based on previous reporting year (1995, 2000, 2005 & 2010).



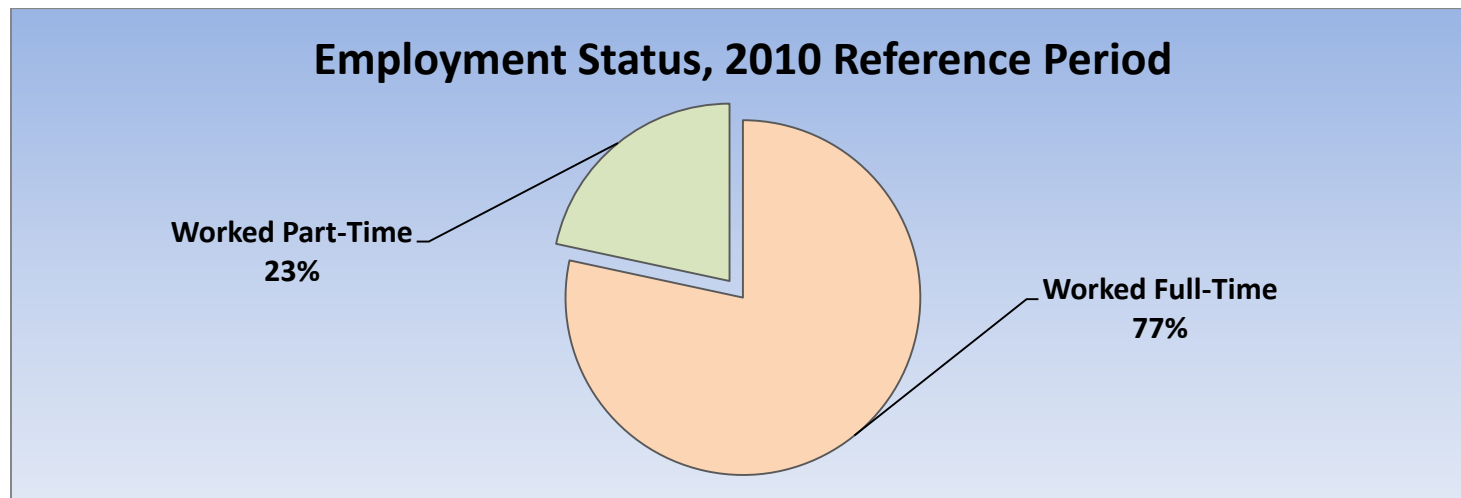
Labour Force by National Occupational Classification	1996	2001	2006	2011	Change From Previous Period		As a % of Labour Force
Management	805	1,025	1,145	1,185	↑	3%	14%
Business, Finance and Administration	1,595	1,345	1,500	1,535	↑	2%	18%
Natural and Applied Science Fields	380	380	395	620	↑	57%	7%
Health Care	565	690	640	695	↑	9%	8%
Education, Government, Social & Community Services	825	790	995	1,345	↑	35%	16%
Art, Culture, recreation and Sport	255	270	275	225	↓	(-18%)	3%
Sales and Service Sector	1,685	1,720	1,675	1,820	↑	9%	22%
Trades, Transport and Equipment Operators	495	665	825	560	↓	(-47%)	7%
Natural Resources and Agriculture	95	50	105	65	↓	(-38%)	1%
Manufacturing and Utilities	195	225	255	260	↑	2%	3%

Employment Trends by Occupational Breakout, 2006-2011



Class of Worker	1996	2001	2006	2011	Change From Previous Period	As a % Neighbourhood
Employee	5,995	6,375	6,975	7,365	↓ (-6%)	89%
Female	3,105	3,310	3,570	3,760		
Male	2,890	3,065	3,405	3,600		
Self-Employed	890	865	875	950	↑ 9%	11%
Female	260	245	265	350		
Male	630	620	610	595		

Employment Status	1996	2001	2006	2011	Change From Previous Period	As a % of Active Labour Force
Worked Full-Time in 2010	N.A.	N.A.	N.A.	6,255	N.A.	77%
Worked Part-Time in 2010	N.A.	N.A.	N.A.	1,870	N.A.	23%



Mode of Transport to Work	1996	2001	2006	2011	Change From Previous Period	As a % of Neighbourhood
Automobile -As a Driver	5,235	5,390	5,810	6,230	↑ 7%	88%
Car-Pool	420	470	595	390	↓ (-34%)	6%
Public Transportation	235	210	285	230	↓ (-19%)	3%
Walked or Bicycled	230	210	180	175	↓ (-3%)	2%
Other Modes	25	45	45	25	↓ (-44%)	<1%
Median Commuting Duration	N.A.	N.A.	N.A.	20.4min.		

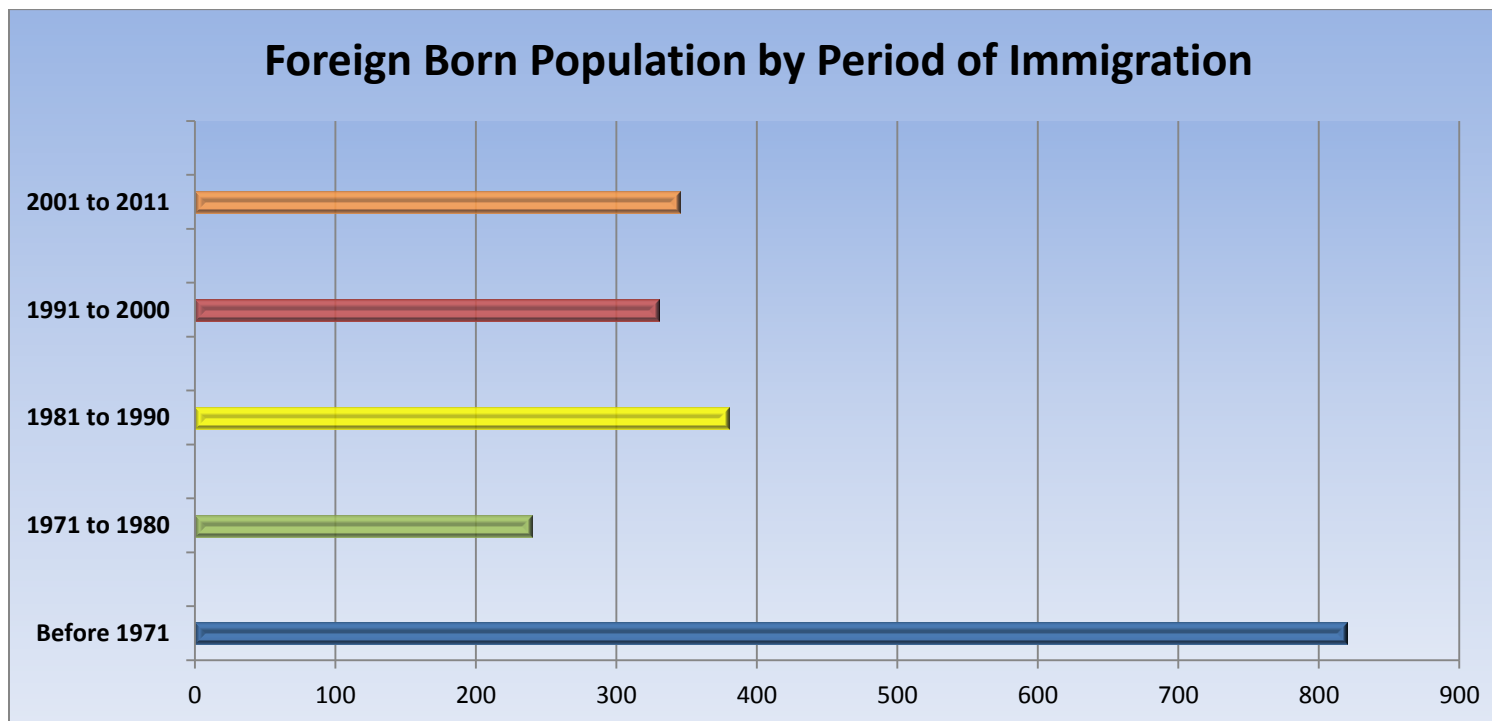
Place of Work	1996	2001	2006	2011	Change From Previous Period	As a % of Neighbourhood
Worked at Home	410	600	610	765	↑ 25%	10%
Worked at a Fixed Address	5,660	5,745	6,310	6,490	↑ 3%	83%
No Fixed Workplace Address	485	570	465	560	↑ 20%	7%
Worked within Municipality	4,935	4,990	5,430	N.A.	— —	
Work in a different Municipality	530	755	880	N.A.	— —	
Worked outside Canada	30	25	30	45	↑ 50%	

Mobility/Migration Status	1996	2001	2006	2011	Change From Previous Period	As a % of Neighbourhood
Lived at the same address 5 years ago	8,205	8,175	8,835	10,060	↑	69%
Moved sometime with the last 5 years	4,385	4,285	5,010	4,565	↓ (-9%)	31%
Internal Migrants	1,525	1,235	1,010	950	↓ (-6%)	90%
- Intra-provincial	1,355	1,070	915	810	↓	
- Inter-provincial	175	165	100	145	↑	
External Migrants	135	145	210	105	↓ (-50%)	10%
Lived at the same address 1 years ago	12,040	11,795	13,185	13,915	↑ 6%	91%
Moved sometime with the last year	1,165	1,190	1,190	1,370	↑ 15%	9%
Internal Migrants	315	430	255	175	↓ (-31%)	80%
- Intra-provincial	250	390	235	165	↓ (-27%)	
- Inter-provincial	60	40	20	0	↓ (-100%)	
External Migrants	35	20	75	45	↓ (-40%)	20%

Place of Birth	1996	2001	2006	2011	Change From Previous Period		As a % of Neighbourhood
Total Immigrant Population	N.A.	N.A.	2,250	2,120	↓	(-6%)	14%
Place of Birth by Continent							
North America (US only)	N.A.	N.A.	185	165	↓	(-11%)	1%
Africa	N.A.	N.A.	95	115	↑	21%	1%
Asia	N.A.	N.A.	285	295	↑	4%	2%
Caribbean	N.A.	N.A.	10	30	↑	200%	<1%
Central and South America	N.A.	N.A.	10	85	↑	750%	1%
Europe	N.A.	N.A.	1,565	1,375	↓	(-12%)	9%
Recent Immigration by Continent, 2006-2011							
Recent Immigrants	N.A.	N.A.	160	130	↓	(-19%)	1%
North America (US only)	N.A.	N.A.	35	0	↓	(-100%)	0%
Africa	N.A.	N.A.	0	0	—	—	0%
Asia	N.A.	N.A.	40	60	↑	50%	<1%
Caribbean	N.A.	N.A.	0	0	—	—	0%
Central and South America	N.A.	N.A.	35	25	↓	(-29%)	<1%
Europe	N.A.	N.A.	50	25	↓	(-50%)	<1%

Immigration by Place of Birth	1996	2001	2006	2011	Change From Previous Period		As a % of Neighbourhood
1. United Kingdom	N.A.	N.A.	2,255	575	↓	(-75%)	4%
2. Poland	N.A.	N.A.	N.A.	195	—	—	1%
3. United States of America	N.A.	N.A.	755	165	↓	(-78%)	1%
4. Germany	N.A.	N.A.	165	140	↓	(-15%)	1%
5. Netherlands	N.A.	N.A.	190	85	↓	(-55%)	1%
6. Portugal	N.A.	N.A.	115	65	↓	(-43%)	1%
7. Colombia	N.A.	N.A.	N.A.	60	—	—	<1%
N.A.							

Period of Immigration	1996	2001	2006	2011	Change From Previous Period	As a % of Neighbourhood
Before 1971	N.A.	N.A.	1,245	820	↓ (-34%)	5%
1971 to 1980	N.A.	N.A.	270	240	↓ (-11%)	2%
1981 to 1990	N.A.	N.A.	265	380	↑ 43%	2%
1991 to 2000	N.A.	N.A.	315	330	↑ 5%	2%
2001 to 2011	N.A.	N.A.	160	345	↑ 116%	2%



Language	1996	2001	2006	2011	Change From Previous Period		As a % of Neighbourhood
Knowledge of Official Languages							
English Only	12,160	12,220	13,205	14,205	↑	8%	91%
French Only	0	0	0	0	—	—	0%
English and French	1,135	890	1,325	1,195	↓	(-10%)	8%
Neither English or French	35	10	50	75	↑	50%	<1%
Language Spoken Most Often at Home							
English	12,900	12,340	13,920	14,665	↑	5%	94%
French	70	25	85	55	↓	(-35%)	<1%
Non-Official Language	235	30	520	550	↑	6%	4%
Mother Tongue *							
English	12,060	12,220	12,595	13,455	↑	7%	87%
French	170	155	325	165	↓	(-50%)	1%
Non-Official Language	1,025	985	1,600	1,690	↑	6%	11%

* Statistics Canada defines 'mother tongue' as the first language learned in childhood and still understood by the individual at the time of census reporting.

Non-Official Languages Spoken Top 10 Reported	1996	2001	2006	2011	Change From Previous Period		As a % of Neighbourhood
1. German	N.A.	N.A.	275	310	↑	13%	2%
2. Polish	N.A.	N.A.	120	265	↑	121%	2%
3. Spanish	N.A.	N.A.	200	235	↑	18%	2%
4. Italian	N.A.	N.A.	180	160	↓	(-11%)	1%
5. Portuguese	N.A.	N.A.	160	145	↓	(-9%)	1%
6. Dutch	N.A.	N.A.	220	140	↓	(-36%)	1%
7. Chinese*	N.A.	N.A.	N.A.	120	—	—	1%
8. Greek	N.A.	N.A.	N.A.	80	—	—	1%
9. Russian	N.A.	N.A.	55	65	↑	18%	<1%
10. Slovak	N.A.	N.A.	N.A.	60	—	—	<1%

* Refers to Cantonese and Mandarin language speakers as well as others who do not specify otherwise.

Religious Identification	1996	2001	2006	2011	Change From Previous Period	As a % of Neighbourhood
Buddhist	N.A.	N.A.	N.A.	0		0%
Christian	N.A.	N.A.	N.A.	11,305		73%
Anglican	N.A.	N.A.	N.A.	1,640		11%
Baptist	N.A.	N.A.	N.A.	255		2%
Catholic	N.A.	N.A.	N.A.	4,450		29%
Orthodox	N.A.	N.A.	N.A.	205		1%
Lutheran	N.A.	N.A.	N.A.	300		2%
Pentecostal	N.A.	N.A.	N.A.	195		1%
Presbyterian	N.A.	N.A.	N.A.	570		4%
United Church	N.A.	N.A.	N.A.	2,455		16%
Other Christian	N.A.	N.A.	N.A.	1,240		8%
Hindu	N.A.	N.A.	N.A.	110		1%
Jewish	N.A.	N.A.	N.A.	60		0%
Muslim	N.A.	N.A.	N.A.	135		1%
Sikh	N.A.	N.A.	N.A.	0		0%
Aboriginal Spirituality	N.A.	N.A.	N.A.	0		0%

Notes:

- (1) Source Data –Statistics Canada. 1996-2011 Census Data, Customized Profiles. Ottawa, Canada
- (2) Data also derived from Statistics Canada’s National Household Survey (NHS)
- (3) Customized Community and Neighbourhood Profiles tabulated and compiled by the City of London’s Planning Division –Policy Planning and Research Section.