



Bostwick Neighbourhood Profile

For further information contact:

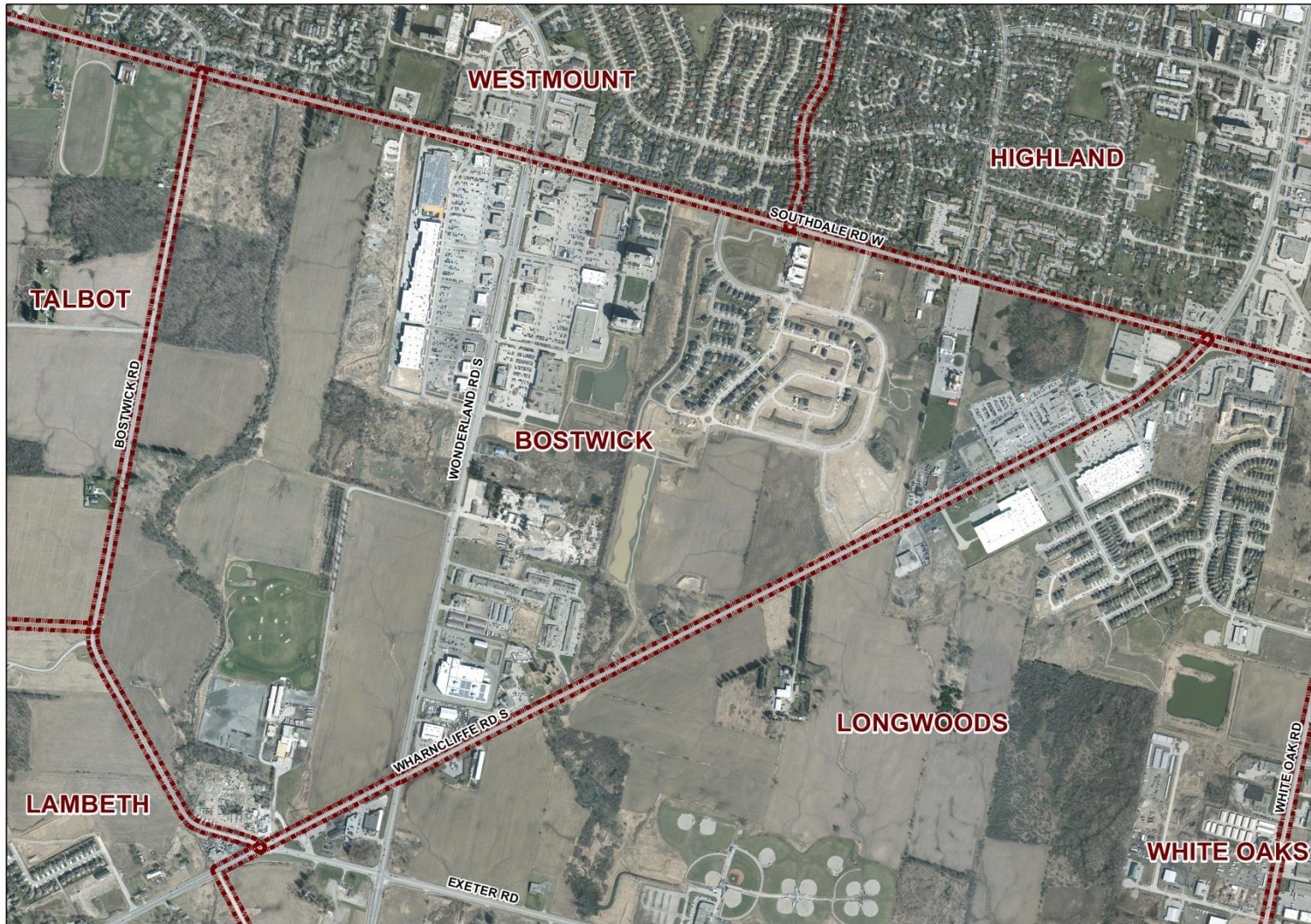
John-Paul Sousa

Planning Research Analyst

Direct: (519) 661-2500 ext. 5989 | email: jpsousa@london.ca

Date Created: Jan. 2014

Neighbourhood Profile -Bostwick Planning District



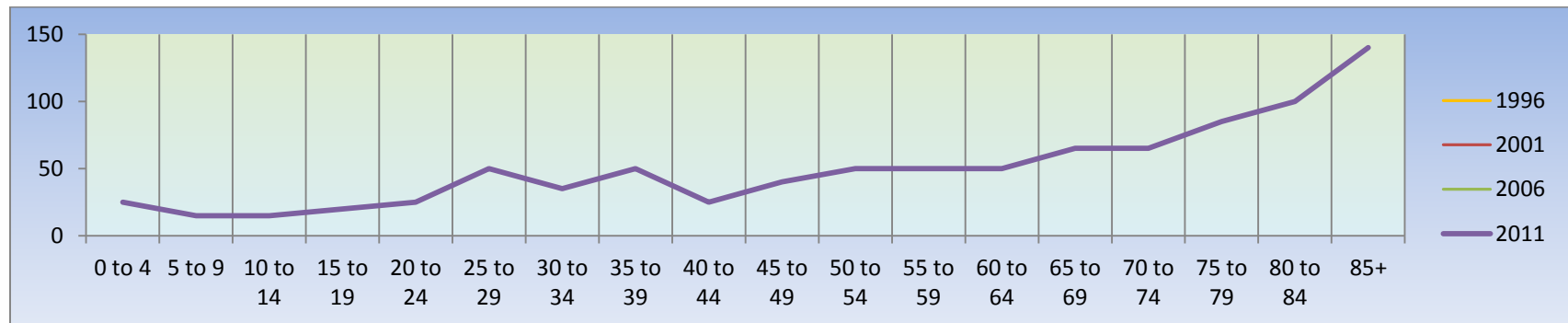
Coordinate System: NAD 1983 UTM Zone 17N
Projection: Transverse Mercator
Datum: North American 1983

Population Characteristics & Age Distribution

Bostwick Neighbourhood	1996	2001	2006	2011	Change From Previous Period	
Total Population	15	20	330	905	↑	174%
Female	N.A.	N.A.	180	530	↑	194%
Male	N.A.	N.A.	150	380	↑	153%

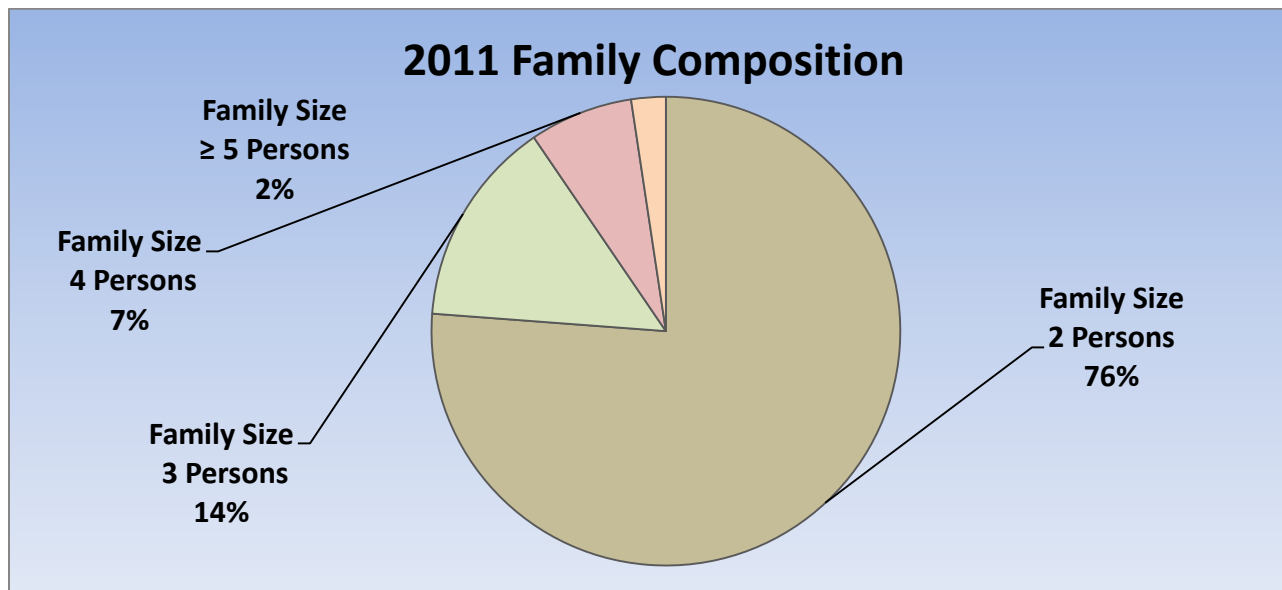
Age Structure	1996	2001	2006	2011	Change From Previous Period		As a % of Neighbourhood
0-19	N.A.	N.A.	30	75	↑	150%	8%
0 to 4	N.A.	N.A.	N.A.	25			3%
5 to 9	N.A.	N.A.	N.A.	15			2%
10 to 14	N.A.	N.A.	N.A.	15			2%
15 to 19	N.A.	N.A.	N.A.	20			2%
20-44	N.A.	N.A.	110	190	↑	73%	20%
45-64	N.A.	N.A.	40	200	↑	400%	21%
65+	N.A.	N.A.	120	460	↑	283%	48%
Median Age	N.A.	N.A.	N.A.	65.3			

2011 Census Age Cohort Breakout	Male	Female	Total	As a % of Neighbourhood
0 to 4	15	10	25	2,76%
5 to 9	5	10	15	1.66%
10 to 14	10	5	15	1.66%
15 to 19	10	10	20	2.21%
20 to 24	15	10	25	2.76%
25 to 29	25	25	50	5.52%
30 to 34	15	20	35	3.87%
35 to 39	25	25	50	5.52%
40 to 44	15	10	25	2.76%
45 to 49	15	25	40	4.42%
50 to 54	25	25	50	5.52%
55 to 59	25	25	50	5.52%
60 to 64	25	25	50	5.52%
65 to 69	30	35	65	7.18%
70 to 74	25	40	65	7.18%
75 to 79	30	55	85	9.39%
80 to 84	35	65	100	11.05%
85+	40	100	140	15.47%
Total	385	520	905	



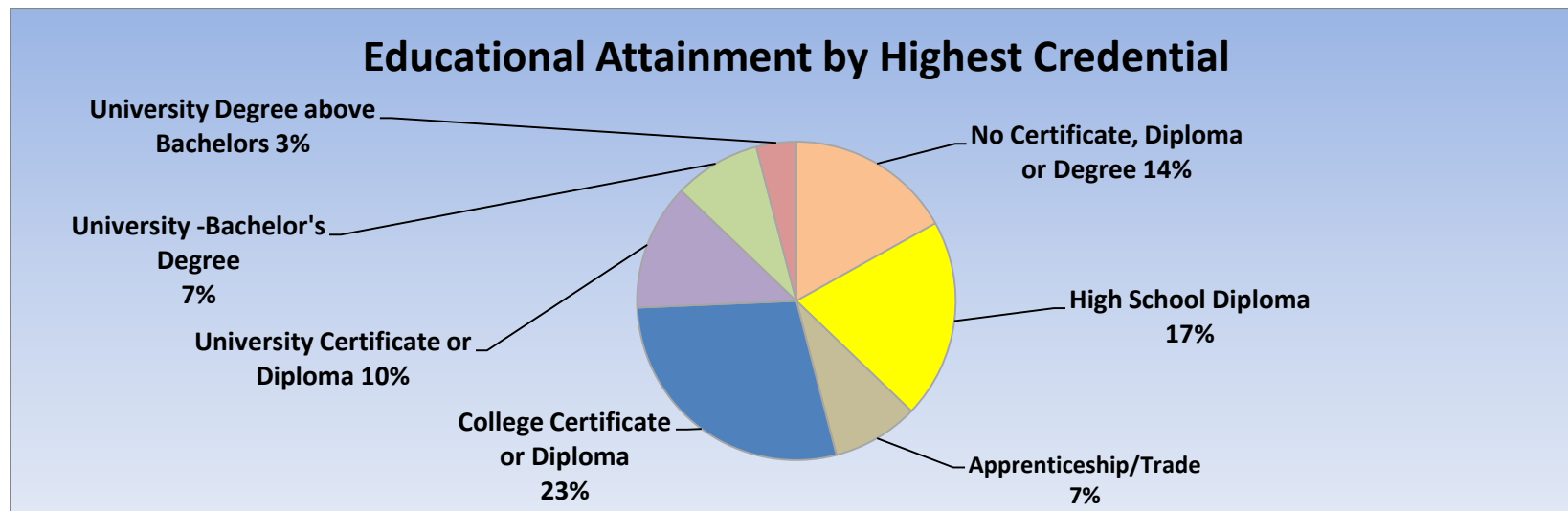
Marital Status	1996	2001	2006	2011	Change From Previous Period	As a % of Neighbourhood
Single	N.A.	N.A.	60	115	↑	13%
Married	N.A.	N.A.	125	375	↑	41%
Common-Law	N.A.	N.A.	20	70	↑	8%
Divorced	N.A.	N.A.	25	65	↑	7%
Separated	N.A.	N.A.	30	35	↑	4%
Widowed	N.A.	N.A.	50	195	↑	22%
Citizenship, Immigration & Ethnic Identity	1996	2001	2006	2011	Change From Previous Period	As a % of Neighbourhood
Citizenship						
Canadian Citizens	N.A.	N.A.	300	685	↑	76%
Non-Canadian Citizens	N.A.	N.A.	30	35	↑	4%
Immigration Status						
Canadian Born Population	N.A.	N.A.	255	215	↓	24%
Foreign Born Population	N.A.	N.A.	60	80	↑	9%
Visible Minority Population	N.A.	N.A.	0	70	↑	8%
Aboriginal Identity Population	N.A.	N.A.	25	20	↓	2%

Family Composition	1996	2001	2006	2011	Change From Previous Period	As a % of Neighbourhood
Number of Census Families	N.A.	N.A.	80	210	↑	
Family Size - 2 Persons	N.A.	N.A.	60	160	↑	76%
Family Size - 3 Persons	N.A.	N.A.	10	30	↑	14%
Family Size - 4 Persons	N.A.	N.A.	15	15	—	7%
Family Size - ≥ 5 Persons	N.A.	N.A.	0	5	↑	2%
Census Family - Average Size	N.A.	N.A.	N.A.	2.40	—	



Family Structure & Number of Children	1996	2001	2006	2011	Change From Previous Period
Married Couples	N.A.	N.A.	65	155	↑
Without Children	N.A.	N.A.	50	115	↑
With Children	N.A.	N.A.	15	45	↑
Common-Law	N.A.	N.A.	10	35	↑
Without Children	N.A.	N.A.	10	25	↑
With Children	N.A.	N.A.	0	10	↑
Lone Parent Families	N.A.	N.A.	10	25	↑
Female Headed	N.A.	N.A.	10	15	↑
1 Child	N.A.	N.A.	0	N.A.	
2 Children	N.A.	N.A.	0	N.A.	
≥ 3 Children	N.A.	N.A.	0	N.A.	
Male Headed	N.A.	N.A.	0	10	↑
1 Child	N.A.	N.A.	0	N.A.	
2 Children	N.A.	N.A.	0	N.A.	
≥ 3 Children	N.A.	N.A.	0	N.A.	

Educational Attainment by Credential	1996	2001	2006	2011	Change From Previous Period	As a % of Neighbourhood
No Certificate, Diploma or Degree	N.A.	N.A.	75	125	↑	14%
High School Diploma or Equivalent	N.A.	N.A.	70	150	↑	17%
Apprenticeship, or Trade Certificate	N.A.	N.A.	40	65	↑	7%
College Certificate or Diploma	N.A.	N.A.	35	210	↑	23%
University Certificate or Diploma	N.A.	N.A.	10	95	↑	10%
University -Bachelor's Degree	N.A.	N.A.	30	65	↑	7%
University Degree above bachelor level (M.A. or PhD)	N.A.	N.A.	0	30	↑	3%

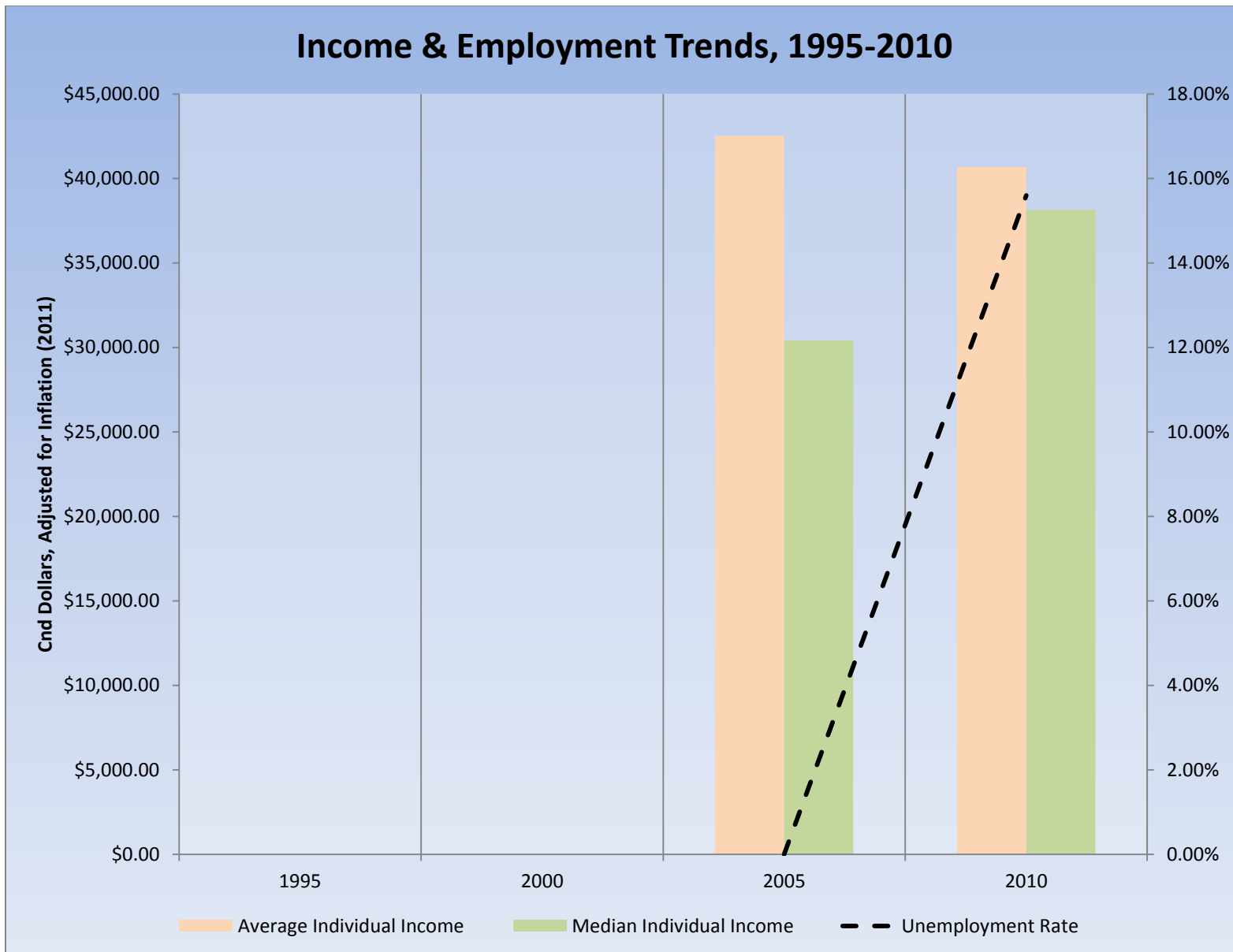


Housing by Structure Type & Tenure	1996	2001	2006	2011	Change From Previous Period	As a % of Neighbourhood
Total Occupied Dwellings	10	10	170	395	↑	
Single-Detached	N.A.	N.A.	10	40	↑	1%
Semi-Detached	N.A.	N.A.	0	0	—	0%
Row House	N.A.	N.A.	20	20	—	1%
Duplex	N.A.	N.A.	0	0	—	0%
Apartment < 5 Storeys	N.A.	N.A.	0	0	—	0%
Apartment ≥ 5 Storeys	N.A.	N.A.	140	335	↑	9%
Number of Owned Dwellings	N.A.	N.A.	155	40	↓	
Owned as a % of Total	N.A.	N.A.	91%	10%	↓	
Number of Rented Dwellings	N.A.	N.A.	15	375	↑	
Rented as a % of Total	N.A.	N.A.	9%	90%	↑	
Average # of Rooms	N.A.	N.A.	N.A.	4.3		
Average # of Bedrooms	N.A.	N.A.	N.A.	N.A.		
Average Gross Rent	N.A.	N.A.	N.A.	\$1,277.00		
Average Value of Dwelling	N.A.	N.A.	N.A.	\$368,272.00		

Labour Market Indicators	1996	2001	2006	2011	Change From Previous Period	As a % of Neighbourhood
Total Labour Force ≥ 15 years	N.A.	N.A.	110	320	↑	
Female	N.A.	N.A.	40	180	↑	56%
Male	N.A.	N.A.	70	140	↑	44%
Unemployment Rate	N.A.	N.A.	N.A.	15.60%	↑	
Female	N.A.	N.A.	N.A.	N.A.		
Male	N.A.	N.A.	N.A.	N.A.		
Employment Rate	N.A.	N.A.	N.A.	40%		
Participation Rate	N.A.	N.A.	40%	47%	↑	
Female	N.A.	N.A.	29%	45%	↑	
Male	N.A.	N.A.	47%	50%	↑	
Labour Force by Sector						
Primary (Agriculture & Resources)	N.A.	N.A.	0	0	–	0%
Secondary (Construction & Manufacturing)	N.A.	N.A.	30	35	↑	12%
Tertiary Services	N.A.	N.A.	90	255	↑	88%

Income Characteristics of Economically Active Population	1996	2001	2006	2011	Change From Previous Period
Individual Income					
Average Income	N.A.	N.A.	\$37,994.00	\$39,459.00	↑
Median Income	N.A.	N.A.	\$27,170.00	\$36,998.00	↑
Income by Gender					
Average Income - Male	N.A.	N.A.	\$38,683.00	\$45,206.00	↑
Average Income - Female	N.A.	N.A.	\$37,286.00	\$35,611.00	↓
Median Income – Male	N.A.	N.A.	\$33,868.00	\$40,518.00	↑
Median Income - Female	N.A.	N.A.	\$19,955.00	\$33,401.00	↑
Household Income					
Average Household Income	N.A.	N.A.	\$63,418.00	\$62,846.00	↓
Median Household Income	N.A.	N.A.	\$19,955.00	\$54,514.00	↑
Family Income					
Average Family Income	N.A.	N.A.	\$63,097.00	\$78,941.00	↑
Median Family Income	N.A.	N.A.	\$72,141.00	\$69,029.00	↓
Lone-Parent Families					
Average Family Income	N.A.	N.A.	N.A.	N.A.	
Median Family Income	N.A.	N.A.	N.A.	N.A.	

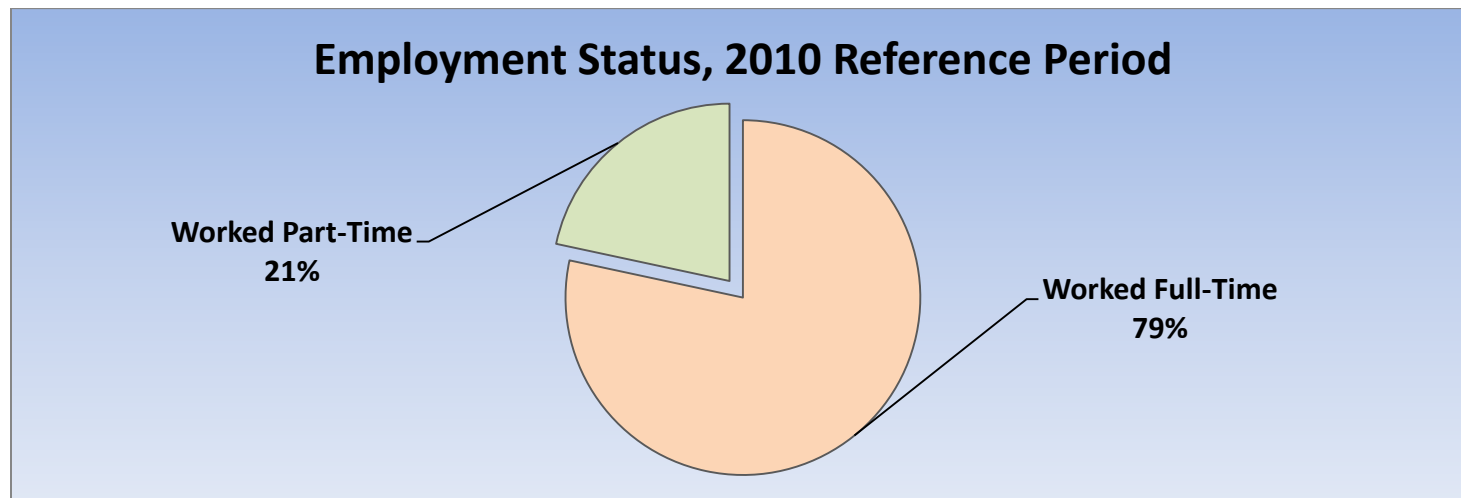
Data Note: Income figures based on previous reporting year (1995, 2000, 2005 & 2010).



Labour Force by National Occupational Classification	1996	2001	2006	2011	Change From Previous Period	As a % of Labour Force
Management	N.A.	N.A.	35	30	↓	10%
Business, Finance and Administration	N.A.	N.A.	15	55	↑	19%
Natural and Applied Science Fields	N.A.	N.A.	10	30	↑	10%
Health Care	N.A.	N.A.	10	35	↑	12%
Education, Government, Social & Community Services	N.A.	N.A.	0	35	↑	12%
Art, Culture, recreation and Sport	N.A.	N.A.	10	0	↓	0%
Sales and Service Sector	N.A.	N.A.	15	70	↑	24%
Trades, Transport and Equipment Operators	N.A.	N.A.	35	35	—	12%
Natural Resources and Agriculture	N.A.	N.A.	0	0	—	0%
Manufacturing and Utilities	N.A.	N.A.	0	0	—	0%

Class of Worker	1996	2001	2006	2011	Change From Previous Period	As a % Neighbourhood
Employee	N.A.	N.A.	85	285	↓	100%
Female	N.A.	N.A.	35	165		
Male	N.A.	N.A.	60	125		
Self-Employed	N.A.	N.A.	50	0	↑	0%
Female	N.A.	N.A.	20	0		
Male	N.A.	N.A.	30	0		

Employment Status	1996	2001	2006	2011	Change From Previous Period	As a % of Active Labour Force
Worked Full-Time in 2010	N.A.	N.A.	N.A.	230	N.A.	79%
Worked Part-Time in 2010	N.A.	N.A.	N.A.	60	N.A.	21%



Mode of Transport to Work	1996	2001	2006	2011	Change From Previous Period	As a % of Neighbourhood
Automobile -As a Driver	N.A.	N.A.	N.A.	210	↑	100%
Car-Pool	N.A.	N.A.	N.A.	0		
Public Transportation	N.A.	N.A.	N.A.	0		
Walked or Bicycled	N.A.	N.A.	N.A.	0		
Other Modes	N.A.	N.A.	N.A.	0		
Median Commuting Duration	N.A.	N.A.	N.A.	20.1 min.		

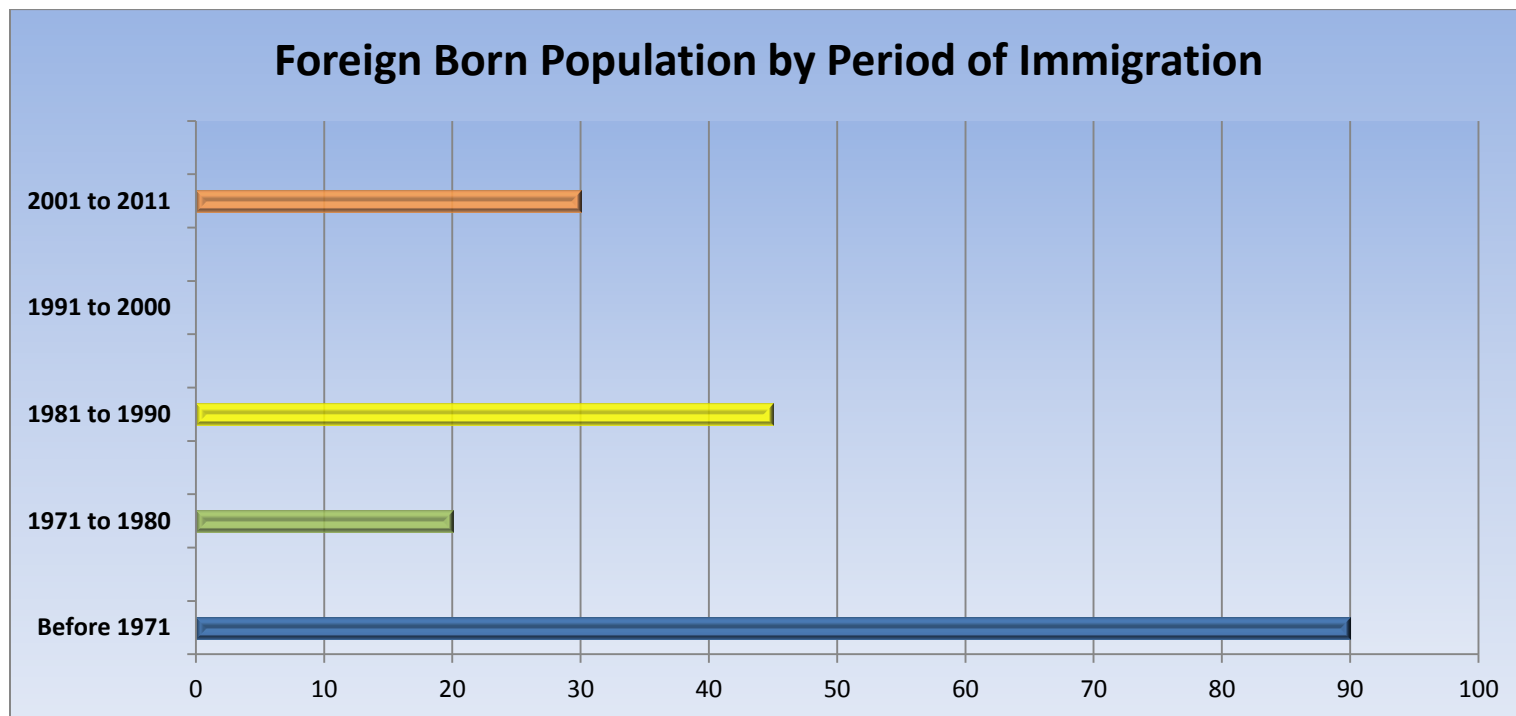
Place of Work	1996	2001	2006	2011	Change From Previous Period	As a % of Neighbourhood
Worked at Home	N.A.	N.A.	20	30	↑	
Worked at a Fixed Address	N.A.	N.A.	80	230	↑	
No Fixed Workplace Address	N.A.	N.A.	0	0	—	
Worked within Municipality	N.A.	N.A.	55	0	↓	
Work in a different Municipality	N.A.	N.A.	30	0	↓	
Worked outside Canada	N.A.	N.A.	0	0	—	

Mobility/Migration Status	1996	2001	2006	2011	Change From Previous Period	As a % of Neighbourhood
Lived at the same address 5 years ago	N.A.	N.A.	35	105	↑	15%
Moved sometime with the last 5 years	N.A.	N.A.	280	590	↑	85%
Internal Migrants	N.A.	N.A.	105	90	↓	100%
- Intra-provincial	N.A.	N.A.	95	80	↓	
- Inter-provincial	N.A.	N.A.	10	0	↓	
External Migrants	N.A.	N.A.	10	0	↓	
Lived at the same address 1 years ago	N.A.	N.A.	170	505	↑	70%
Moved sometime with the last year	N.A.	N.A.	155	215	↑	30%
Internal Migrants	N.A.	N.A.	55	50	↓	100%
- Intra-provincial	N.A.	N.A.	55	45	↓	
- Inter-provincial	N.A.	N.A.	0	0	—	
External Migrants	N.A.	N.A.	10	0	↓	0%

Place of Birth	1996	2001	2006	2011	Change From Previous Period	As a % of Neighbourhood
Total Immigrant Population	N.A.	N.A.	60	195	↑	22%
Place of Birth by Continent						
North America (US only)	N.A.	N.A.	0	0	↑	0%
Africa	N.A.	N.A.	0	0	—	0%
Asia	N.A.	N.A.	0	45	↑	5%
Caribbean	N.A.	N.A.	0	0	—	0%
Central and South America	N.A.	N.A.	0	0	—	0%
Europe	N.A.	N.A.	55	130	↑	14%
Recent Immigration by Continent, 2006-2011						
Recent Immigrants	N.A.	N.A.	0	0	—	0%
North America (US only)	N.A.	N.A.	0	0	—	
Africa	N.A.	N.A.	0	0	—	
Asia	N.A.	N.A.	0	0	—	
Caribbean	N.A.	N.A.	0	0	—	
Central and South America	N.A.	N.A.	0	0	—	
Europe	N.A.	N.A.	0	0	—	

Immigration by Place of Birth	1996	2001	2006	2011	Change From Previous Period	As a % of Neighbourhood
1. United Kingdom N.A.	N.A.	N.A.	N.A.	50		6%

Period of Immigration	1996	2001	2006	2011	Change From Previous Period	As a % of Neighbourhood
Before 1971	N.A.	N.A.	N.A.	90		10%
1971 to 1980	N.A.	N.A.	N.A.	20		2%
1981 to 1990	N.A.	N.A.	N.A.	45		5%
1991 to 2000	N.A.	N.A.	N.A.	0		0%
2001 to 2011	N.A.	N.A.	N.A.	30		3%



Language	1996	2001	2006	2011	Change From Previous Period	As a % of Neighbourhood
Knowledge of Official Languages						
English Only	N.A.	N.A.	290	660	↓	73%
French Only	N.A.	N.A.	0	0	-	0%
English and French	N.A.	N.A.	35	45	↑	5%
Neither English or French	N.A.	N.A.	0	10	↑	1%
Language Spoken Most Often at Home						
English	N.A.	N.A.	280	615	↑	68%
French	N.A.	N.A.	10	0	↓	0%
Non-Official Language	N.A.	N.A.	40	60	↑	7%
Mother Tongue *						
English	N.A.	N.A.	320	515	↑	57%
French	N.A.	N.A.	0	10	↑	1%
Non-Official Language	N.A.	N.A.	10	175	↑	19%

* Statistics Canada defines 'mother tongue' as the first language learned in childhood and still understood by the individual at the time of census reporting.

Non-Official Languages Spoken Top 10 Reported	1996	2001	2006	2011	Change From Previous Period	As a % of Neighbourhood
N.A.	N.A.	N.A.	N.A.	N.A.		

Religious Identification	1996	2001	2006	2011	Change From Previous Period	As a % of Neighbourhood
Buddhist	N.A.	N.A.	N.A.	0		0%
Christian	N.A.	N.A.	N.A.	585		6%
Anglican	N.A.	N.A.	N.A.	85		1%
Baptist	N.A.	N.A.	N.A.	0		0%
Catholic	N.A.	N.A.	N.A.	265		3%
Orthodox	N.A.	N.A.	N.A.	0		0%
Lutheran	N.A.	N.A.	N.A.	0		0%
Pentecostal	N.A.	N.A.	N.A.	0		0%
Presbyterian	N.A.	N.A.	N.A.	30		<1%
United Church	N.A.	N.A.	N.A.	85		1%
Other Christian	N.A.	N.A.	N.A.	70		1%
Hindu	N.A.	N.A.	N.A.	0		0%
Jewish	N.A.	N.A.	N.A.	0		0%
Muslim	N.A.	N.A.	N.A.	0		0%
Sikh	N.A.	N.A.	N.A.	0		0%
Aboriginal Spirituality	N.A.	N.A.	N.A.	0		0%

Notes:

- (1) Source Data –Statistics Canada. 1996-2011 Census Data, Customized Profiles. Ottawa, Canada
- (2) Data also derived from Statistics Canada’s National Household Survey (NHS)
- (3) Customized Community and Neighbourhood Profiles tabulated and compiled by the City of London’s Planning Division –Policy Planning and Research Section.