



City of London –Community Profile

Planning Division

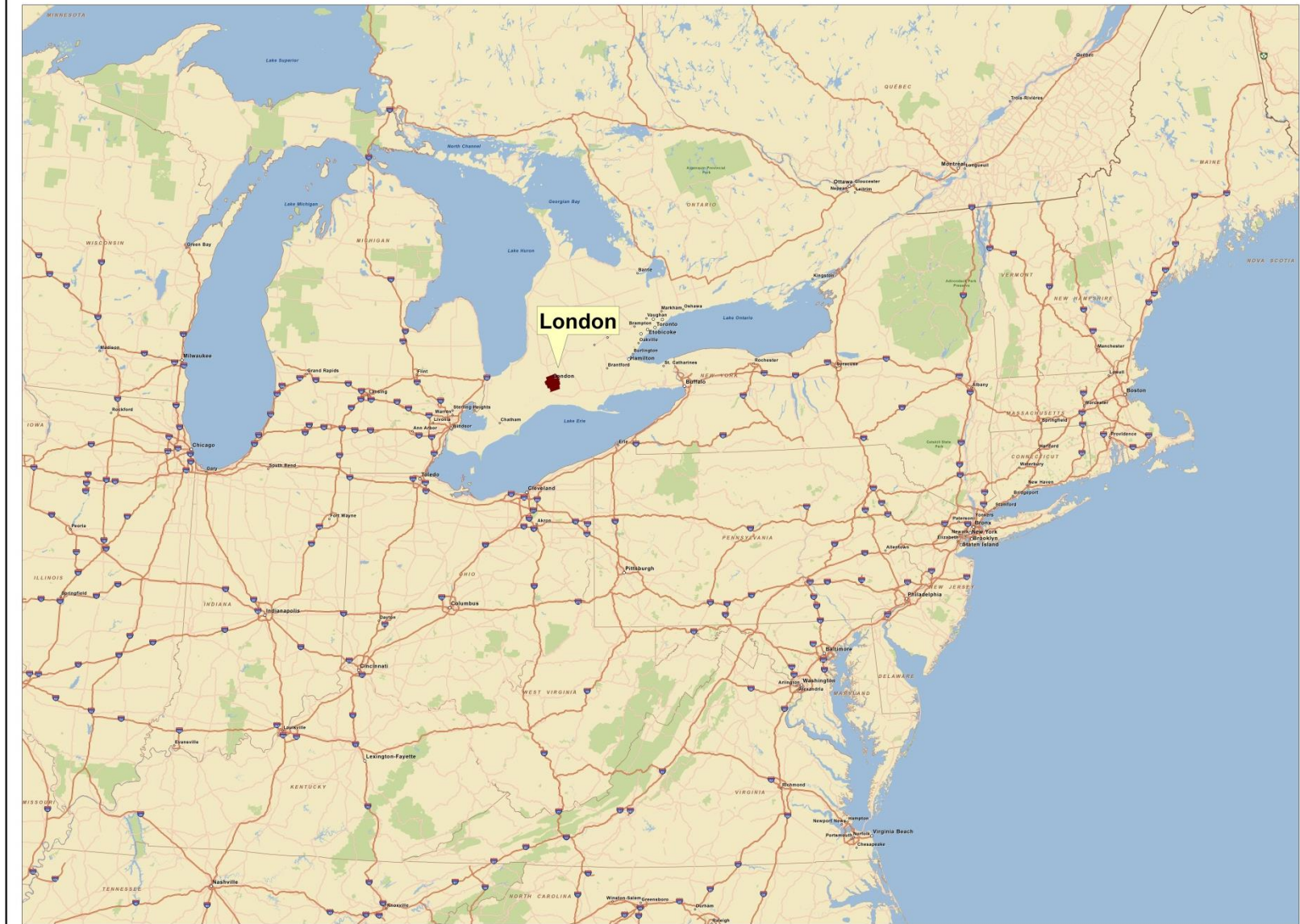
For further information contact:

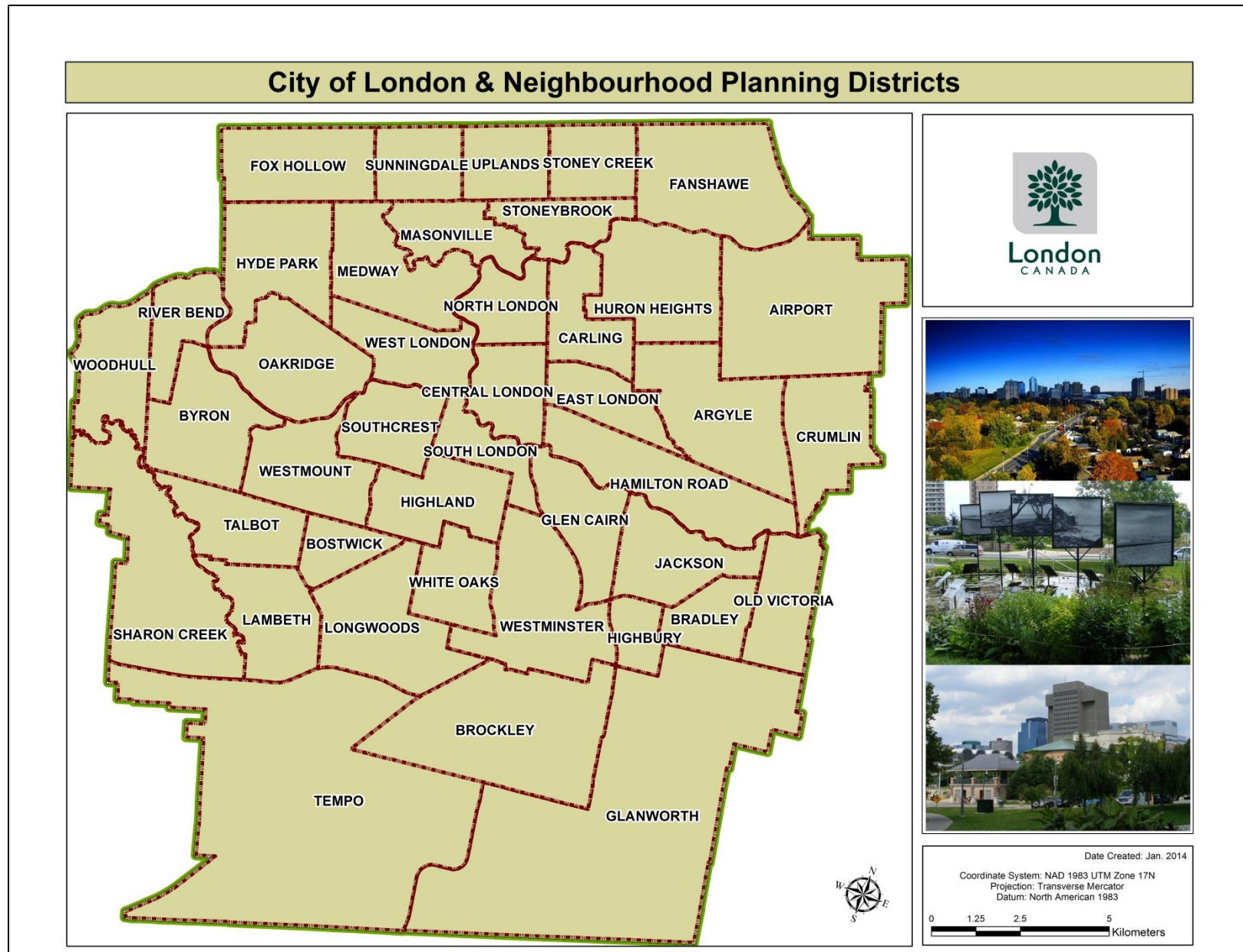
John-Paul Sousa

Planning Research Analyst

Direct: (519) 661-2500 ext. 5989 | email: jpsousa@london.ca

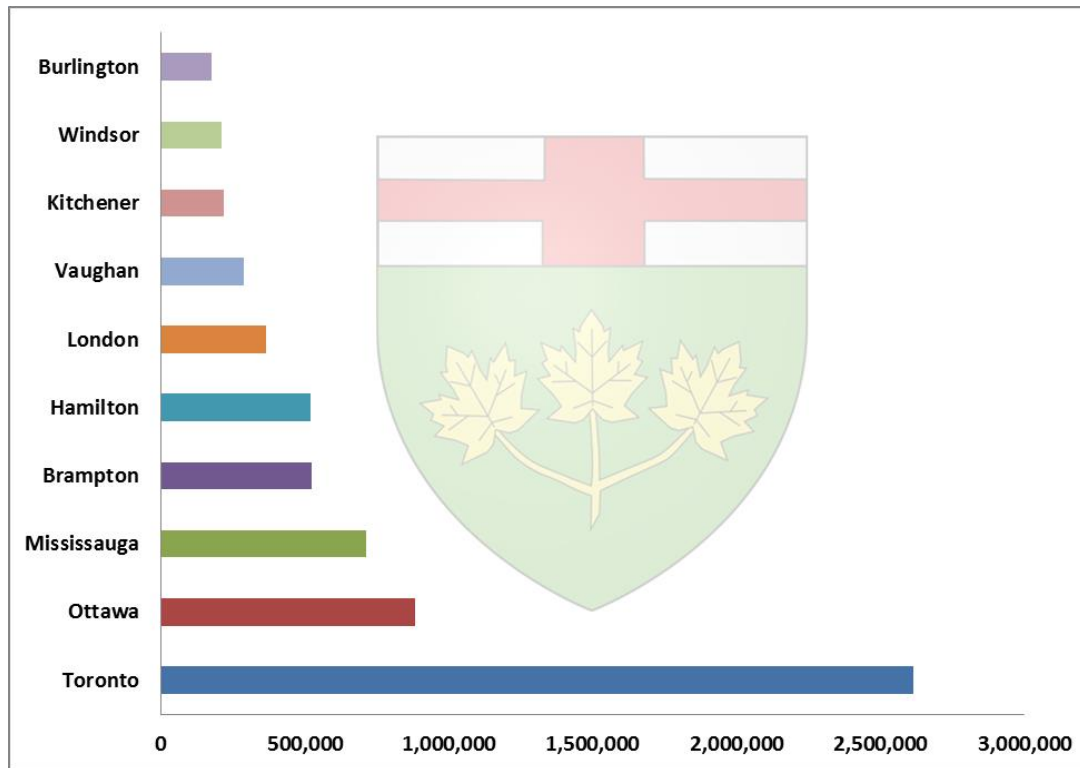
City of London - At the Crossroad of North America





Demographic Overview – London, Canada

Province of Ontario – Major Urban Centres



With a population of over 366,151 in 2011 London is the 15th largest city overall within in Canada

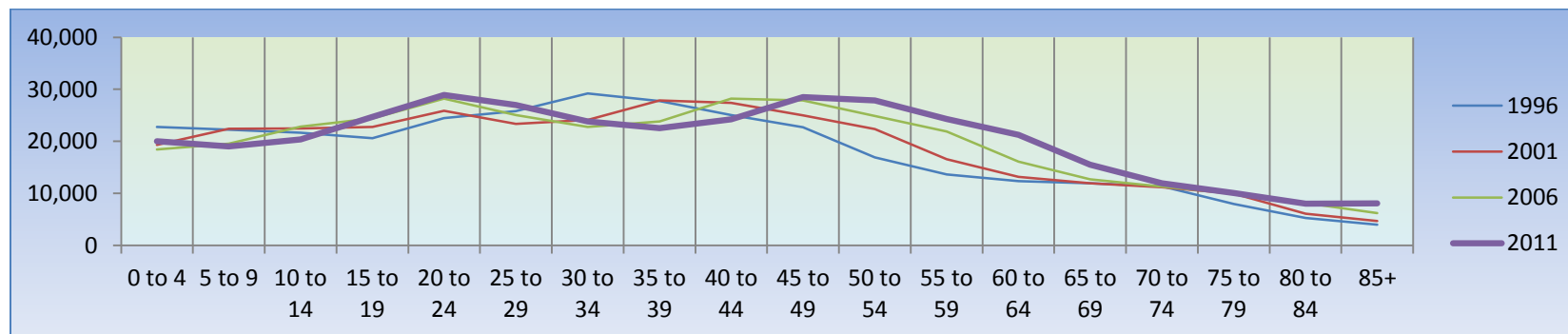
City of London Historical Growth Trends	1986	1991	1996	2001	2006	2011	Change From Previous Period (2006-2011)	
Total Population	269,140	308,060	325,615	336,680	352,395	366,151	13,756	3.90%
Female	139,415	159,630	168,755	174,425	182,710	188,568	5,858	3.21%
Male	129,725	148,430	156,860	162,255	169,685	177,583	7,898	4.65%

Population Characteristics & Age Distribution

Population Density	1996	2001	2006	2011	Change From Previous Period
Population Density per Km2	766	796	838	870	↑ 4%

Age Structure	1996	2001	2006	2011	Change From Previous Period	2011 Citywide As a %
0-19	87,230	86,680	85,245	84,080	↓ (-1.37%)	23%
0 to 4	22,745	19,295	18,470	19,990	↑ 8%	5%
5 to 9	22,220	22,435	19,545	19,010	↓ (-3%)	5%
10 to 14	21,680	22,495	22,830	20,365	↓ (-11%)	6%
15 to 19	20,585	22,755	24,405	24,715	↑ 1.27%	7%
20-44	132,300	128,680	128,030	126,515	↓ (-1.18%)	35%
45-64	65,580	77,125	90,750	101,845	↑ 12%	28%
65+	40,505	43,825	48,370	53,705	↑ 11%	15%
Median Age	35	37	38	39	↑ [1 year]	

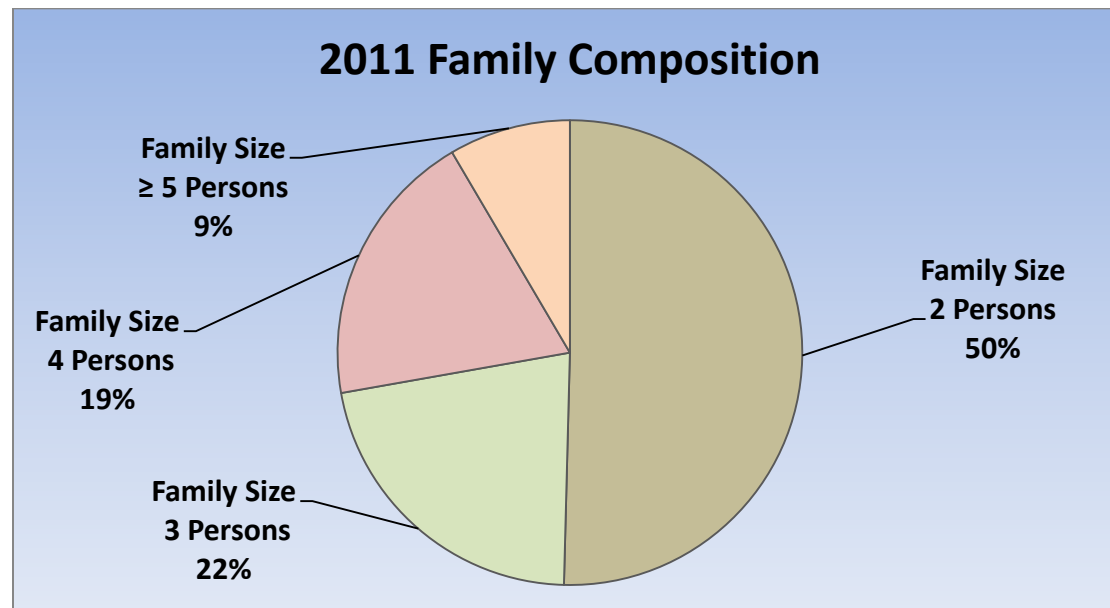
2011 Census Age Cohort Breakout	Male	Female	Total	As a % Citywide
0 to 4	10,290	9,705	19,995	5.46%
5 to 9	9,665	9,345	19,010	5.19%
10 to 14	10,380	9,985	20,365	5.56%
15 to 19	12,675	12,040	24,715	6.75%
20 to 24	14,225	14,695	28,920	7.90%
25 to 29	13,180	13,810	26,990	7.37%
30 to 34	11,735	12,095	23,830	6.51%
35 to 39	11,070	11,460	22,530	6.15%
40 to 44	11,875	12,365	24,240	6.62%
45 to 49	13,715	14,780	28,495	7.78%
50 to 54	13,280	14,555	27,835	7.60%
55 to 59	11,440	12,825	24,265	6.63%
60 to 64	10,080	11,170	21,250	5.80%
65 to 69	7,240	8,295	15,535	4.24%
70 to 74	5,450	6,510	11,960	3.27%
75 to 79	4,360	5,710	10,070	2.75%
80 to 84	3,245	4,785	8,030	2.19%
85+	2,580	5,530	8,110	2.21%
Total	176,485	189,660	366,145	



Marital Status	1996	2001	2006	2011	Change From Previous Period	2011 Citywide As a %
Single	80,250	88,605	99,970	91,660	↓ (-8%)	25%
Married	130,965	132,495	136,775	140,055	↑ 2%	38%
Common-Law	15,070	20,200	24,010	26,485	↑ 10%	7%
Divorced	19,170	21,135	22,980	20,180	↓ (-12%)	6%
Separated	10,380	10,850	11,615	10,620	↓ (-9%)	3%
Widowed	15,155	15,630	16,570	17,775	↑ 7%	5%

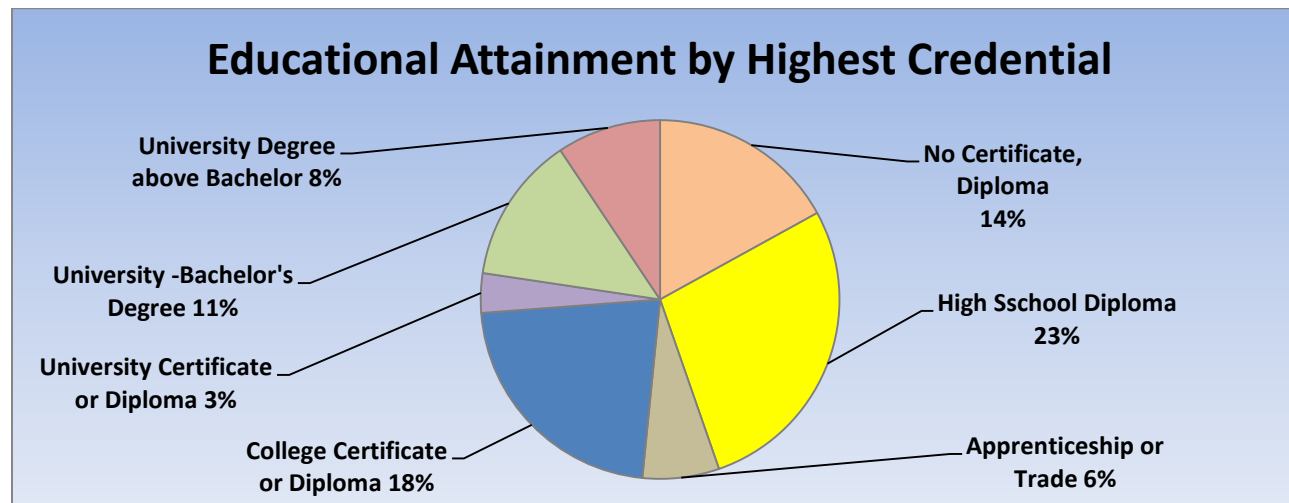
Citizenship, Immigration & Identity	1996	2001	2006	2011	Change From Previous Period	2011 Citywide As a %
Citizenship						
Canadian Citizens	305,305	314,780	328,105	340,900	↑ 4%	93%
Non-Canadian Citizens	17,105	18,155	20,585	19,815	↓ (-4%)	5%
Immigration Status						
Canadian Born	253,420	260,730	269,020	279,580	↑ 4%	76%
Foreign Born	67,530	69,175	75,620	76,585	↑ 1.28%	21%
Visible Minority	28,770	36,420	47,955	57,965	↑ 21%	16%
Aboriginal Identity	3,905	4,600	5,040	10,620	↑ 110%	3%

Family Composition	1996	2001	2006	2011	Change From Previous Period	2011 Citywide As a %
Number of Census Families	87,020	91,750	96,905	100,185	↑ 3%	
Family Size - 2 Persons	39,575	43,405	47,275	50,505	↑ 7%	50%
Family Size - 3 Persons	18,790	19,505	21,215	21,850	↑ 3%	22%
Family Size - 4 Persons	19,485	19,630	19,610	19,355	↓ 255	19%
Family Size - ≥ 5 Persons	9,165	9,210	8,800	8,480	↓ (-1.30%)	8%
Census Family - Average Size	3.10	3.00	2.90	2.90	—	



Family Structure & Number of Children	1996	2001	2006	2011	Change From Previous Period	2011 Citywide As a %
Married Couples	64,945	65,585	67,590	68,370	1.15%	68%
Without Children	26,450	27,275	29,150	30,740	5%	
With Children	38,500	38,310	38,435	37,740	(-2%)	
Common-Law	7,535	10,100	11,995	13,230	10%	13%
Without Children	4,620	6,280	7,495	8,375	12%	
With Children	2,910	3,820	4,500	4,855	8%	
Lone Parent Families	14,540	16,075	17,325	18,585	7%	18%
Female Headed	12,735	13,760	14,280	15,155	6%	
1 Child	7,365	8,285	8,600	9,065	5%	
2 Children	3,945	3,985	4,205	4,465	6%	
≥ 3 Children	1,425	1,495	1,475	1,630	11%	
Male Headed	1,805	2,315	3,040	3,430	13%	
1 Child	1,145	1,570	2,025	2,330	15%	
2 Children	475	550	815	850	4%	
≥ 3 Children	185	190	205	255	24%	

Educational Attainment by Credential	1996	2001	2006	2011	Change From Previous Period		2011 Citywide As a %
No Certificate, Diploma or Degree	N.A.	N.A.	N.A.	51,205	—	—	14%
High School Diploma or Equivalent	N.A.	N.A.	81,100	83,450	↑	3%	23%
Apprenticeship, or Trade Certificate	N.A.	25,110	21,495	20,825	↓	(-3%)	6%
College Certificate or Diploma	N.A.	47,010	58,810	66,980	↑	14%	18%
University Certificate or Degree	N.A.	N.A.	N.A.	10,735	—	—	3%
University -Bachelor's Degree	N.A.	N.A.	33,600	39,985	↑	19%	11%
University Degree above bachelor level (M.A. or PhD)	N.A.	N.A.	14,385	28,255	↑	96%	8%

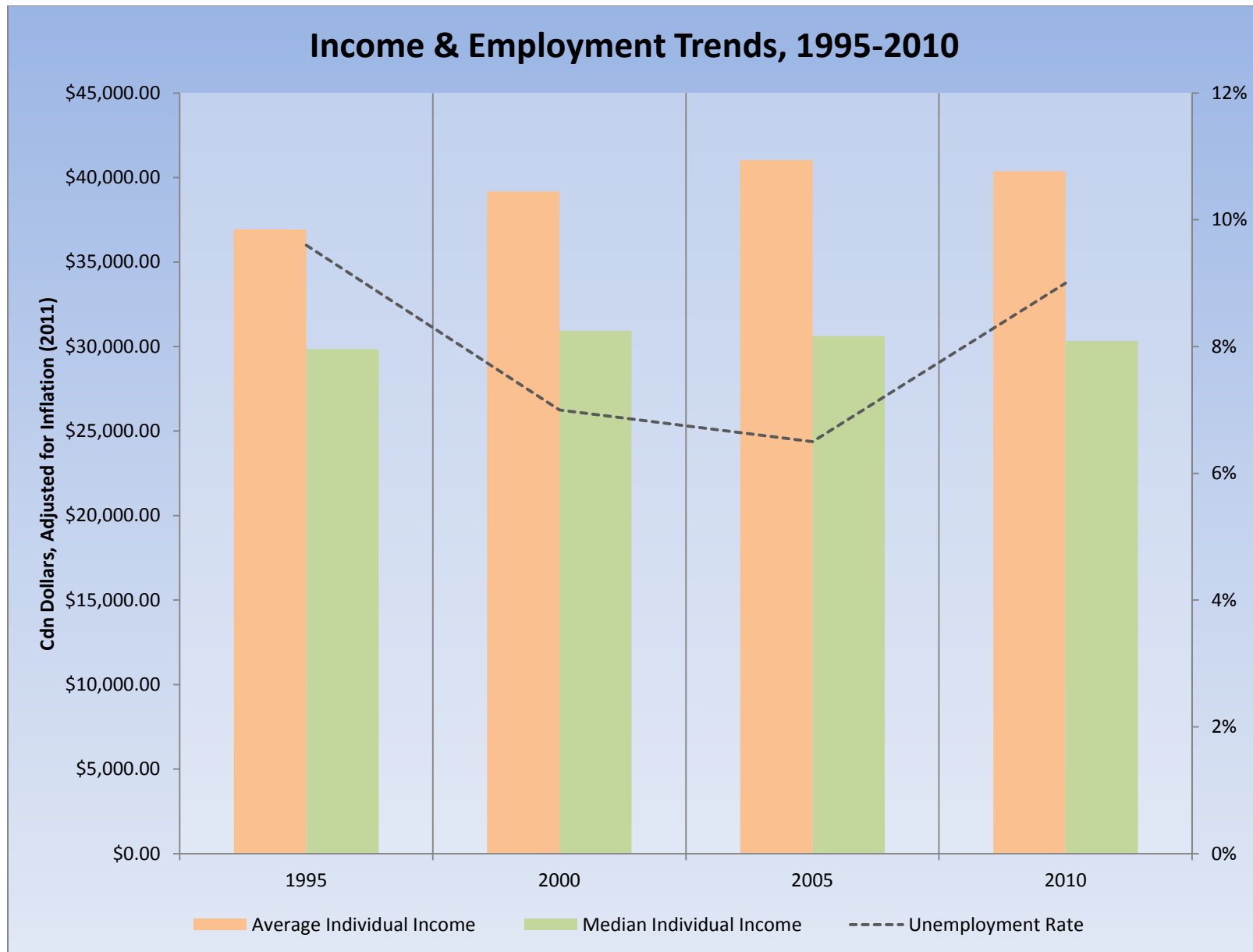


Housing by Structure Type & Tenure	1996	2001	2006	2011	Change From Previous Period	2011 Citywide As a %
Total Occupied Dwellings	129,730	137,760	145,525	153,630	↑ 6%	
Single-Detached	63,965	69,030	72,130	77,865	↑ 8%	51%
Semi-Detached	5,310	5,685	5,690	5,860	↑ 3%	4%
Row House	15,680	17,000	18,360	19,085	↑ 4%	12%
Duplex	3,790	2,570	4,460	3,965	↓ (-11%)	3%
Apartment < 5 Storeys	14,470	15,370	16,265	15,615	↓ (-4%)	10%
Apartment ≥ 5 Storeys	26,080	27,740	28,250	30,935	↑ 10%	20%
Number of Owned Dwellings	74,090	81,510	90,640	96,715	↑ 7%	
Owned as a % of Total	57%	59%	62%	63%	↑	63%
Number of Rented Dwellings	55,650	56,255	54,885	56,920	↑ 4%	
Rented as a % of Total	43%	41%	38%	37%	↓	37%
Average # of Rooms	6.3	6.4	6.6	6.5	↓	
Average # of Bedrooms	2.6	2.6	2.6	N.A.		
Average Gross Rent	\$627.00	\$652.00	\$733.00	\$822.00	↑ 12%	
Average Value of Dwelling	\$154,765.00	\$155,689.00	\$212,059.00	\$256,613.00	↑ 21%	

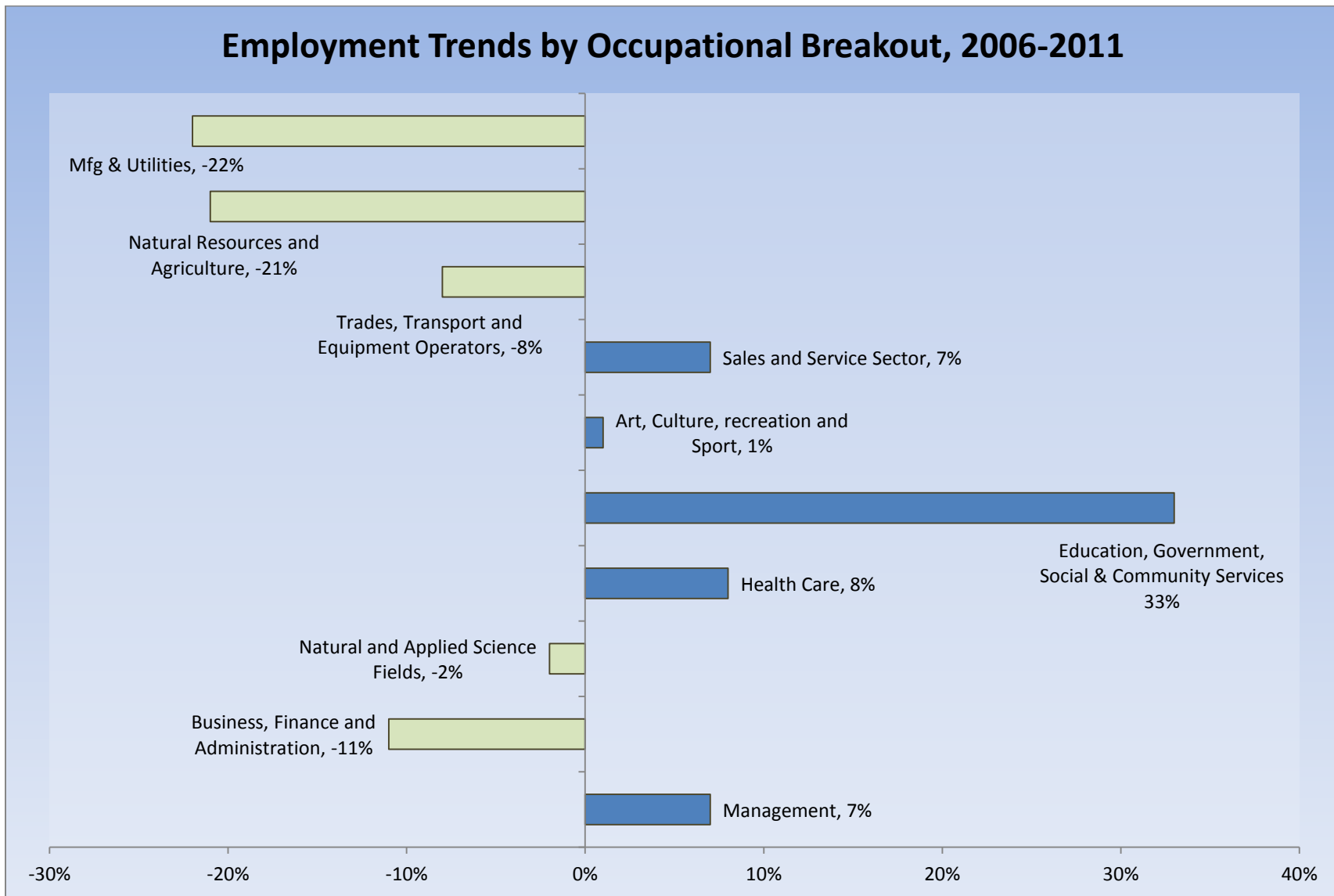
Labour Market Indicators	1996	2001	2006	2011	Change From Previous Period		As a % of Work Force
Total Labour Force ≥15 years	171,065	179,515	191,555	196,370	↑	3%	
Female	82,630	87,340	93,455	96,770	↑	4%	49%
Male	88,435	92,175	98,100	99,600	↑	2%	51%
Unemployment Rate	9.60%	7.00%	6.50%	9.00%	↑		
Female	9.70%	7.00%	6.80%	8.60%	↑		
Male	9.60%	7.10%	6.20%	9.40%	↑		
Employment Rate	N.A.	N.A.	N.A.	59%			
Participation Rate	66.80%	66.80%	66.50%	65.10%	↓		
Female	61.40%	61.80%	61.80%	61.50%	↓		
Male	72.30%	72.30%	71.70%	69.10%	↓		
Labour Force by Sector							
Primary (Agriculture & Resources)	1,810	1,735	1,985	1,860	↓	(-6%)	1%
Secondary (Construction & Manufacturing)	33,095	34,165	35,895	30,265	↓	(-16%)	16%
Tertiary - Services	130,510	140,160	150,835	158,360	↑	5%	83%

Income Characteristics of Economically Active Population	1996	2001	2006	2011	Change From Previous Period	
Individual Income						
Average Income	\$26,884.00	\$31,306.00	\$36,549.00	\$39,229.00	↑	7%
Median Income	\$21,730.00	\$24,717.00	\$27,275.00	\$29,478.00	↑	8%
Income by Gender						
Average Income – Male	\$32,779.00	\$38,391.00	\$45,041.00	\$45,469.00	↑	1%
Average Income - Female	\$20,990.00	\$24,221.00	\$28,831.00	\$33,499.00	↑	16%
Median Income – Male	\$26,882.00	\$30,284.00	\$33,818.00	\$34,462.00	↑	2%
Median Income - Female	\$16,578.00	\$19,150.00	\$22,367.00	\$25,859.00	↑	16%
Household Income						
Average Household Income	\$49,449.00	\$57,589.00	\$68,899.00	\$73,107.00	↑	6%
Median Household Income	\$41,172.00	\$46,153.00	\$53,684.00	\$56,241.00	↑	5%
Family Income						
Average Family Income	\$58,214.00	\$69,121.00	\$84,593.00	\$89,591.00	↑	6%
Median Family Income	\$50,591.00	\$58,687.00	\$68,648.00	\$74,448.00	↑	8%
Lone-Parent Families						
Average Family Income	N.A.	N.A.	N.A.	\$49,400.00		
Median Family Income	N.A.	N.A.	N.A.	\$41,673.00		

Data Note: Income figures based on previous reporting year (1995, 2000, 2005 & 2010).

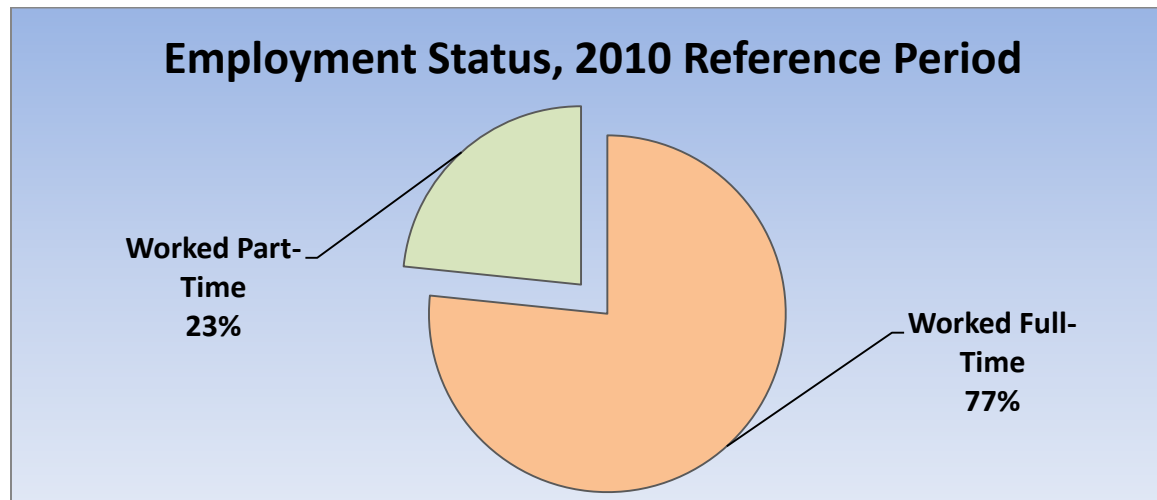


Labour Force by National Occupational Classification	1996	2001	2006	2011	Change From Previous Period	As a % of Work Force
Management	15,150	17,605	16,545	17,675	↑ 7%	9%
Business, Finance & Administration	31,960	31,995	34,135	30,220	↓ (-11%)	16%
Natural and Applied Science Fields	7,070	10,240	11,675	11,390	↓ (-2%)	6%
Health Care	10,785	11,935	13,560	14,660	↑ 8%	8%
Education, Government, Social & Community Services	13,780	16,555	19,405	25,850	↑ 33%	14%
Arts, Culture, Recreation & Sport	4,525	4,730	5,015	5,060	↑ 1%	3%
Sales and Service Sector	46,795	44,385	47,045	50,505	↑ 7%	27%
Trades, Transport & Equipment Operators	19,785	24,105	25,045	23,000	↓ (-8%)	12%
Natural Resources & Agriculture	2,470	2,125	2,345	1,845	↓ (-21%)	1%
Manufacturing & Utilities	13,100	12,375	13,135	10,265	↓ (-22%)	5%



Class of Worker	1996	2001	2006	2011	Change From Previous Period	As a % of Work Force
Employee	147,835	158,825	170,825	174,445	↑ 2%	92%
Female	73,685	79,335	85,620	88,225		
Male	74,150	79,490	85,205	86,220		
Self-Employed	17,100	16,925	16,780	16,025	↓ (-4%)	8%
Female	5,540	5,805	5,710	5,715		
Male	11,560	11,120	11,070	10,310		

Employment Status	1996	2001	2006	2011	Change From Previous Period	As a % of Work Force
Worked Full-Time	N.A.	N.A.	N.A.	141,700		77%
Worked Part-Time	N.A.	N.A.	N.A.	43,220		23%



Mode of Transport to Work	1996	2001	2006	2011	Change From Previous Period	As a % of Work Force
Automobile -As a Driver	109,185	118,425	123,140	127,330	↑ 3%	77%
Car-Pool	11,470	12,325	15,535	11,665	↓ (-25%)	7%
Public Transportation	10,685	11,850	14,455	14,520	↑ <1%	9%
Walked or Bicycled	12,420	12,325	13,795	9,790	↓ (-29%)	6%
Other Modes	955	1,485	1,570	1,445	↓ (-8%)	<1%
Median Commuting Duration	N.A.	N.A.	N.A.	15.9 Min.		

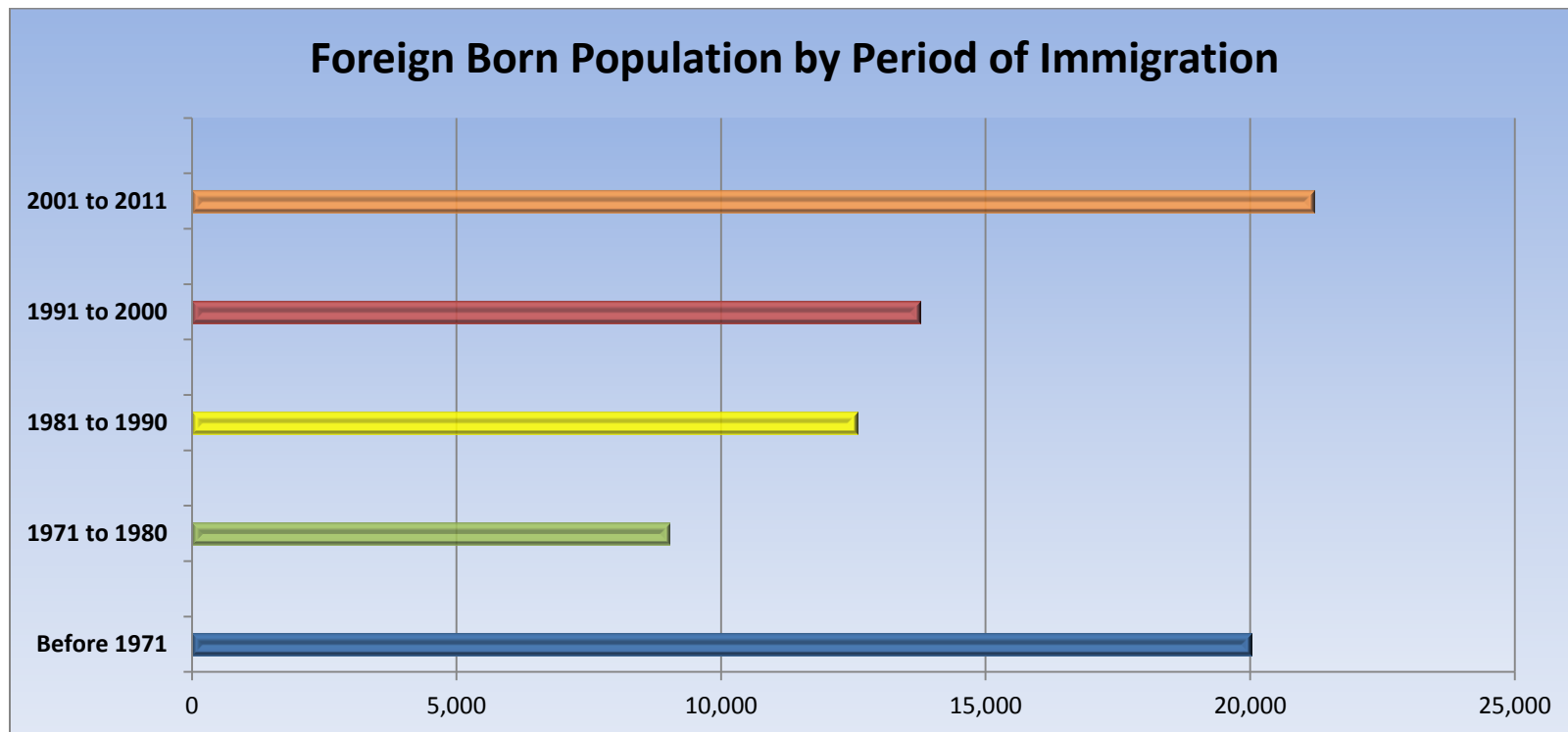
Place of Work	1996	2001	2006	2011	Change From Previous Period	As a % of Work Force
Worked at Home	9,335	9,735	9,830	10,515	↑ 7%	6%
Worked at a Fixed Address	134,340	142,250	152,640	150,415	↓ (-1%)	84%
No Fixed Workplace	10,375	14,155	15,865	17,150	↑ 8%	10%
Worked within Municipality	118,520	127,305	135,510	N.A.		
Work in a different Municipality	11,525	14,945	17,130	N.A.		
Worked outside Canada	515	775	800	595	↓ (-26%)	(-<1%)

Mobility/Migration Status	1996	2001	2006	2011	Change From Previous Period	2011 Citywide As a %
Lived at the same address 5 years ago	151,810	164,705	178,110	190,270	↑	56%
Moved sometime with the last 5 years	147,925	148,905	151,990	150,510	↓	44%
Internal Migrants	38,350	40,595	37,990	38,285	↑ 1%	11%
- Intra-provincial	33,035	34,525	32,815	32,960	↑	
- Inter-provincial	5,320	6,065	5,175	5,330	↑	
External Migrants	9,200	11,200	14,095	13,100	↓ (-7%)	4%
Lived at the same address 1 years ago	258,925	271,550	290,250	303,020	↑	85%
Moved sometime with the last year	59,155	57,890	54,725	53,830	↓ (-2%)	15%
Internal Migrants	12,740	14,145	12,700	13,125	↑	4%
- Intra-provincial	10,615	11,885	11,050	11,295	↑	
- Inter-provincial	2,130	2,255	1,645	1,835	↑	
External Migrants	2,325	3,755	3,105	3,090	↓ (<-1%)	<1%

Place of Birth	1996	2001	2006	2011	Change From Previous Period		2011 Citywide As a %
Total Immigrant Population	N.A.	N.A.	75,620	76,585	↑	1%	21%
Place of Birth by Continent							
North America (US only)	N.A.	N.A.	3,465	3,635	↑	5%	1%
Africa	N.A.	N.A.	3,625	3,885	↑	7%	1%
Asia	N.A.	N.A.	19,585	23,440	↑	20%	6%
Caribbean	N.A.	N.A.	2,085	1,500	↓	(-28%)	<1%
Central and South America	N.A.	N.A.	6,620	8,670	↑	31%	2%
Europe	N.A.	N.A.	39,580	35,065	↓	(-11%)	10%
Recent Immigration by Continent, 2006-2011							
Recent Immigrants	N.A.	N.A.	12,240	11,405	↓	(-7%)	3%
North America (US only)	N.A.	N.A.	585	675	↑	15%	<1%
Africa	N.A.	N.A.	1,435	1,045	↓	(-27%)	<1%
Asia	N.A.	N.A.	5,690	5,325	↓	(-6%)	1%
Caribbean	N.A.	N.A.	200	205	↑	2%	<1%
Central and South America	N.A.	N.A.	2,415	2,790	↑	15%	1%
Europe	N.A.	N.A.	1,755	1,300	↓	(-26%)	<1%

Immigration by Place of Birth	1996	2001	2006	2011	Change From Previous Period	2011 Citywide As a %
1. United Kingdom	N.A.	N.A.	11,815	10,035	↓ (-15%)	3%
2. Poland	N.A.	N.A.	5,105	4,295	↓ (-16%)	1%
3. Colombia	N.A.	N.A.	2,285	3,660	↑ 60%	1%
4. Portugal	N.A.	N.A.	3,920	3,630	↓ (-7%)	1%
5. China	N.A.	N.A.	2,425	2,940	↑ 21%	<1%
6. India	N.A.	N.A.	2,070	2,520	↑ 22%	<1%
7. Netherlands	N.A.	N.A.	2,750	2,300	↓ (-16%)	<1%
8. Korea	N.A.	N.A.	N.A.	2,185	↑	<1%
9. Italy	N.A.	N.A.	2,770	2,170	↓ (-21%)	<1%
10. Germany	N.A.	N.A.	2,450	2,040	↓ 16%	<1%

Period of Immigration	1996	2001	2006	2011	Change From Previous Period	2011 Citywide As a %
Before 1971	N.A.	N.A.	24,200	20,020	↑ (-17%)	3%
1971 to 1980	N.A.	N.A.	9,125	9,025	↑ (-1%)	3%
1981 to 1990	N.A.	N.A.	13,405	12,580	↓ (-6%)	3%
1991 to 2000	N.A.	N.A.	16,650	13,750	↓ (-17%)	4%
2001 to 2011	N.A.	N.A.	N.A.	21,210		6%



Language	1996	2001	2006	2011	Change From Previous Period		2011 Citywide As a %
Knowledge of Official Languages							
English Only	295,310	303,795	317,345	331,035	↑	4%	91%
French Only	125	125	275	235	↓	(-15%)	<1%
English and French	22,860	25,140	26,710	26,360	↓	(-1%)	7%
Neither English or French	4,110	3,890	4,344	4,640	↑	7%	1%
Language Spoken Most Often at Home							
English	288,475	279,660	306,350	314,010	↑	3%	87%
French	1,060	N.A.	1,610	1,460	↓	(-1%)	<1%
Non-Official Language	26,740	N.A.	35,780	35,190	↓	(-2%)	10%
Mother Tongue *							
English	261,575	265,805	271,335	281,995	↑	4%	78%
French	3,855	4,615	5,110	4,710	↓	(-8%)	1%
Non-Official Language	52,635	59,075	69,020	69,650	↑	1%	19%

* Statistics Canada defines 'mother tongue' as the first language learned in childhood and still understood by the individual at the time of census reporting.

Non-Official Languages Spoken - Top 10 Reported	1996	2001	2006	2011	Change From Previous Period	2011 Citywide As a %
Spanish	6,000	7,625	11,360	13,045	↑ 15%	4%
Arabic	5,005	7,305	8,980	10,145	↑ 13%	3%
Chinese*	3,430	2,645	5,735	6,340	↑ 11%	2%
Polish	7,330	7,285	7,105	6,315	↓ (-11%)	2%
Portuguese	6,235	6,160	6,920	5,895	↓ (-15%)	2%
German	6,405	6,410	5,395	4,865	↓ (-10%)	1%
Italian	3,895	5,570	5,235	4,240	↓ (-19%)	1%
Korean	N.A.	N.A.	N.A.	2,880		<1%
Dutch	3,305	3,615	3,110	2,835	↓ (-12%)	<1%
Greek	3,000	2,670	2,225	2,415	↑ 9%	<1%

* Refers to Cantonese and Mandarin language speakers as well as others who do not specify otherwise.

Religious Identification	1996	2001	2006	2011	Change From Previous Period	2011 Citywide As a %
Buddhist	N.A.	2,485	N.A.	2,760	↑	<1%
Christian	N.A.	244,150	N.A.	226,615	↑	63%
Anglican	N.A.	36,775	N.A.	27,490	↓	8%
Baptist	N.A.	12,455	N.A.	9,540	↓	3%
Catholic	N.A.	96,300	N.A.	97,285	↑	27%
Orthodox	N.A.	5,355	N.A.	6,535	↑	2%
Lutheran	N.A.	5,410	N.A.	4,420	↓	1%
Pentecostal	N.A.	4,400	N.A.	4,350	↓	1%
Presbyterian	N.A.	9,960	N.A.	10,140	↑	2%
United Church	N.A.	49,000	N.A.	34,185	↓	10%
Other Christian	N.A.	24,495	N.A.	32,555	↑	9%
Hindu	N.A.	1,400	N.A.	2,790	↑	<1%
Jewish	N.A.	1,825	N.A.	1,715	↓	<1%
Muslim	N.A.	11,465	N.A.	15,780	↑	4%
Sikh	N.A.	485	N.A.	715	↑	<1%
Aboriginal Spirituality	N.A.	300	N.A.	280	↓	<1%

Notes:

- (1) Source Data –Statistics Canada. 1996-2011 Census Data, Customized Profiles. Ottawa, Canada
- (2) Data also derived from Statistics Canada’s National Household Survey (NHS)
- (3) Customized Community and Neighbourhood Profiles tabulated and compiled by the City of London’s Planning Division –Policy Planning and Research Section.