

LONDON & MIDDLESEX HOUSING CORPORATION

Annual Shareholder Presentation



London & Middlesex Housing Corporation
Société de Logement London & Middlesex

May 5, 2014



Our Mission

To provide quality, affordable and sustainable housing accessible to those who are eligible.

ratified in 2013



London & Middlesex Housing Corporation
Société de Logement London & Middlesex



What We Do

- **Management of the RGI program within the public housing portfolio of 3,282 units**
- **Collecting rent, administering the *Residential Tenancies Act***
- **Maintaining the public housing stock in a good state of repair**
- **Community/tenant relations and community development**
- **Administering the Rent Supplement Program** *(repatriated by City in 2013)*



London & Middlesex Housing Corporation
Société de Logement London & Middlesex



Last year you helped house:

- **More than 5000 tenants**
- **522 new move-ins**
- **Adults**
- **Seniors**
- **Children**
- **People with physical and mental disabilities**
- **Women fleeing abuse**
- **New Canadians**
- **The working poor**
- **Formerly homeless individuals**
- **People challenged by addictions**



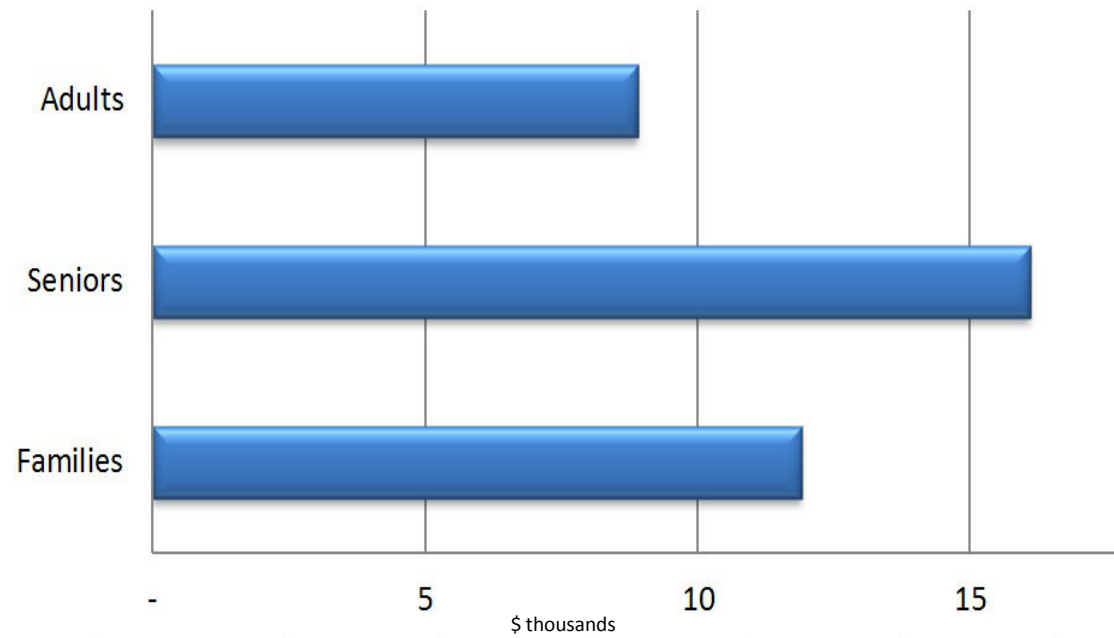


Households Served



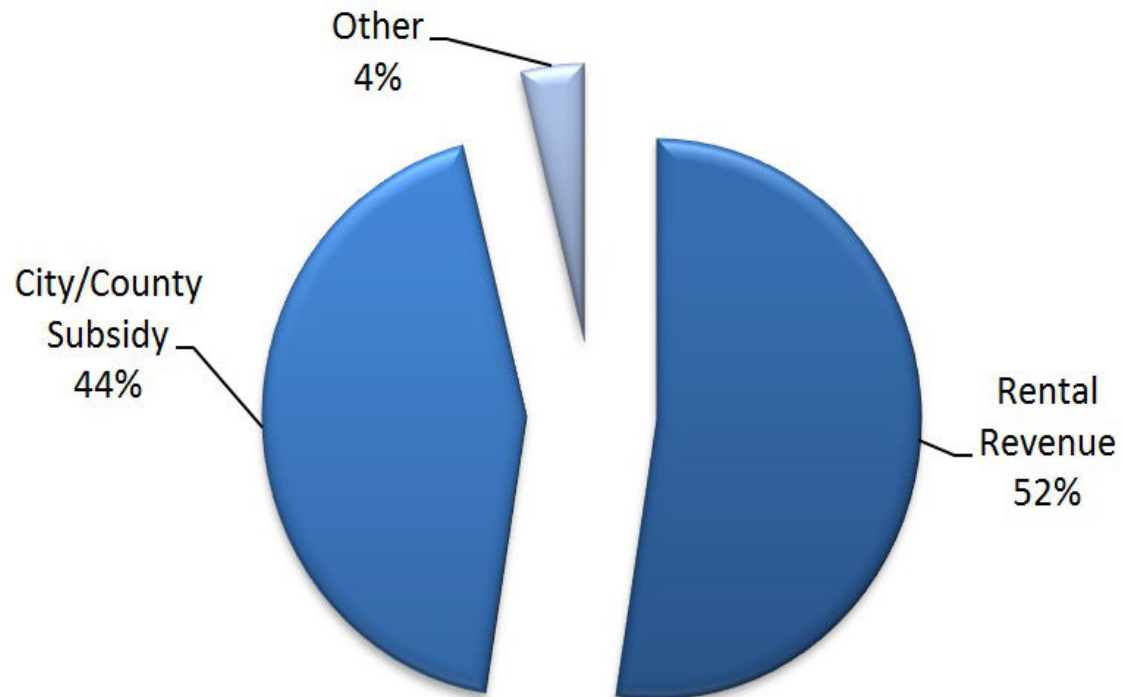


Average Annual Gross Income





2013 Revenue Sources





What We Do

- **Help the City of London achieve its key results of:**
 - **A Caring City**
 - **A Vibrant and Diverse Community**
 - **A Sustainable Infrastructure**
 - **A Green and Growing City**
 - **A Strong Economy**





**New garbage compactor and collection system
345 Wharncliffe Road North, London**



London & Middlesex Housing Corporation
Société de Logement London & Middlesex



Floor replacement
39 Tecumseh Avenue East, London



Domestic hot water boiler
39 Tecumseh Avenue East, London



London & Middlesex Housing Corporation
Société de Logement London & Middlesex



Rookie League Baseball



London & Middlesex Housing Corporation
Société de Logement London & Middlesex



Rookie League Baseball, 2013



London & Middlesex Housing Corporation
Société de Logement London & Middlesex



Southdale Summer Slam



London & Middlesex Housing Corporation
Société de Logement London & Middlesex



Gardens, 241 Simcoe Street. London



London & Middlesex Housing Corporation
Société de Logement London & Middlesex



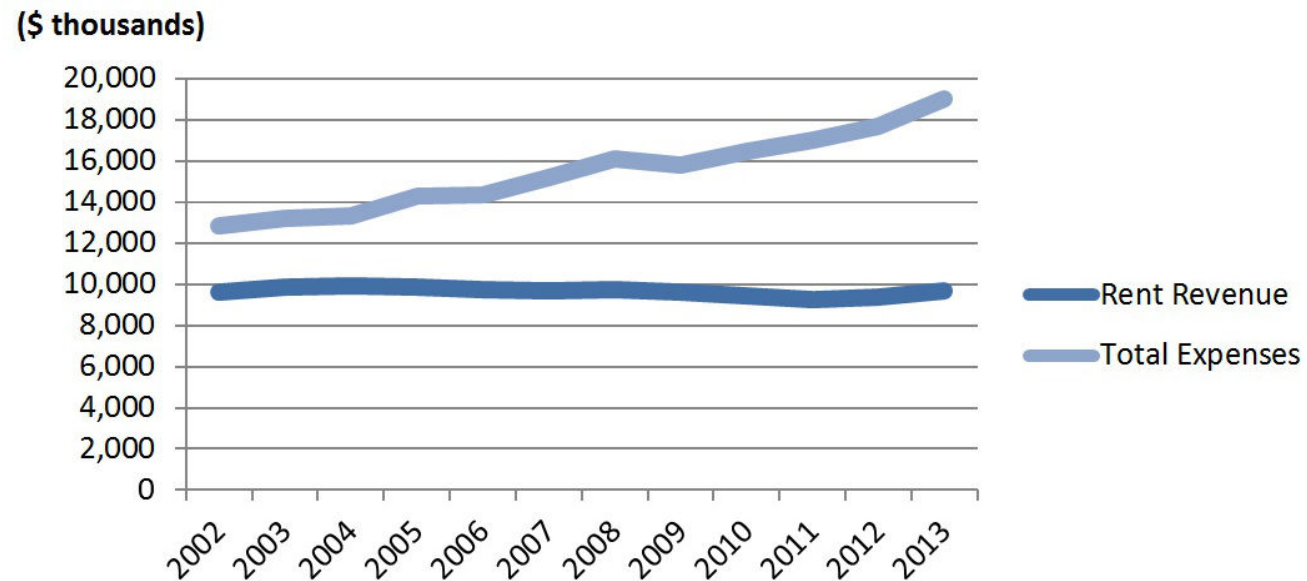
Southdale Community partners



London & Middlesex Housing Corporation
Société de Logement London & Middlesex

Revenues vs. Expenses

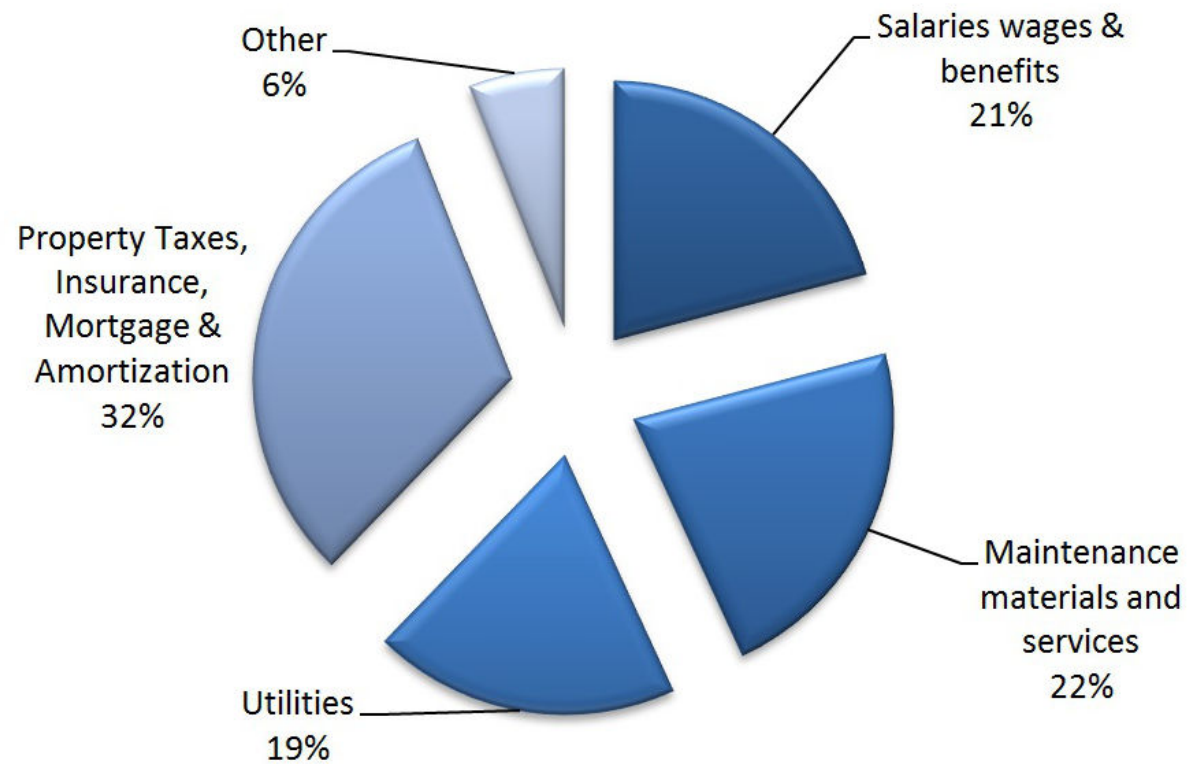
2002-2013 Operating Results



Flat rent revenues since 2001



2013 Operating Expenses





London & Middlesex Housing Corporation
Société de Logement London & Middlesex

I wanted to Thankyou for all the help and support you have given me over the year's. without you I would not be where I am today.

Thankyou thank you 😊 you deserve more credit for all the hard work you guys do.

OLD ADDRESS: 304 Oxford St W.
London ON



London & Middlesex Housing Corporation
Société de Logement London & Middlesex