

--	--

TO:	CHAIR AND MEMBERS CIVIC WORKS COMMITTEE MEETING ON APRIL 28, 2014
FROM:	EDWARD SOLDO, P. ENG. DIRECTOR, ROADS AND TRANSPORTATION
SUBJECT:	RICHMOND STREET NORTH PEDESTRIAN CROSSING ENVIRONMENTAL ASSESSMENT STUDY APPOINTMENT OF CONSULTING ENGINEER

RECOMMENDATION

That on the recommendation of the Director, Roads and Transportation, the following actions **BE TAKEN** with respect to the appointment of a consultant for the Richmond Street North Pedestrian Crossing Environmental Assessment (PD2043):

- a) AECOM, **BE APPOINTED** Consulting Engineers to complete the Environmental Assessment Study for Richmond Street North Pedestrian Crossing, in the amount of \$199,550 excluding HST, in accordance with Section 15.2 (d) of the Procurement of Goods and Services Policy;
- b) the financing for this project **BE APPROVED** as set out in the Sources of Financing Report attached hereto as Appendix 'A';
- c) the Civic Administration **BE AUTHORIZED** to undertake all the administrative acts that are necessary in connection with this project;
- d) the approvals given herein **BE CONDITIONAL** upon the Corporation entering into a formal contract with the consultant for the work; and,
- e) the Mayor and City Clerk **BE AUTHORIZED** to execute any contract or other documents, if required, to give effect to these recommendations.

BACKGROUND

Purpose

This report seeks the approval of Council to retain an engineering consultant to undertake the Richmond Street North Pedestrian Crossing Environmental Assessment (EA).

Context

The purpose of this EA is to review alternatives and generate a preferred solution for linking a major east-west recreational pathway corridor along the northern boundary of the City, as identified in the City of London's Bicycle Master Plan. Items to be considered will be user safety, road safety, ecological impacts, costs and opportunities for this crossing to function as a gateway feature to London. The Richmond Street crossing will serve as a link in a connected pathway system. The crossing is expected to function as part of a City-wide amenity, serving growth areas north of Sunningdale Road, and it will ultimately connect with Middlesex Centre at Weldon Park.

This EA will be undertaken as a Schedule 'C' Municipal Class EA due to the presence of existing environmental features in proximity to the crossing, and the inclusion of a pedestrian bridge and tunnel as potential crossing alternatives. This EA will satisfy the requirements of the Environmental Assessment Act by enabling a comprehensive, environmentally sound planning process open to public, agency and First Nation participation. The EA will help facilitate dialogue between parties with a number of competing interests.

The geographical limits of the study will, at a minimum, encompass the area around Richmond Street from Sunningdale Road to just beyond the City limits. A map in Appendix B illustrates the Study Area.

--	--

The primary deliverables from this EA include:

- A complete subject land status report for all natural heritage features located within the study limits as per Section 15.5 of the Official Plan and the City's Environmental Management Guidelines.
- An Environmental Impact Study as outlined in the City of London Official Plan.
- Determination of a preferred alternative and location to effectively link the recreational corridor. The preferred alternative will safely convey pedestrians and cyclists across Richmond Street and minimize impacts to the natural, social, cultural and economic environments.
- An Environmental Study Report that documents the study in accordance with the EA Act.

If a bridge is selected as the preferred alternative, the assignment includes consideration of innovative design options and artistic renderings that illustrate options that could function as a unique gateway feature to London.

DISCUSSION

Consultant Selection

Three (3) submissions were received as a result of this Request for Proposal (RFP14-12) which closed on March 20, 2014. An evaluation committee with representation from the Transportation Planning & Design Division and Environmental & Parks Planning reviewed the consultant submissions for the project. Based on the evaluation criteria and selection process identified in the Request for Proposal, the evaluation committee concluded that the proposal from AECOM provides the best value to the City.

AECOM has an experienced project team, a clear understanding of the project scope and requirements. They have addressed all components as identified in the RFP with details on their past performance and experiences proving their ability to undertake similar projects.

In accordance with Section 15.2 (d) of the Procurement of Good and Service Policy, Civic Administration is recommending AECOM be appointed as the consulting firm for the subject EA. The submission from AECOM includes a fee submission that indicates the EA study can be completed within the available budget in project account PD2043. The fee submission includes a 10% contingency to account for uncertainty in the EA process.

Spring Natural Environment Survey

The requirements of the City Environmental Management Guidelines includes a salamander and early frog breeding survey be completed in late March/early April. Completion of the survey in spring 2014 accelerates the EA schedule and enables better decision making. However, council approval of the EA assignment will occur after the spring survey timing window and would delay the spring survey until 2015.

Considering the benefits to the project schedule, administration requested that AECOM complete this survey in early April 2014 under a separate low dollar value purchase order. Enabling this specialty survey by AECOM, who had been identified as the recommended EA consultant, will ensure the information received is consistent and will accelerate the completion of the Environmental Study Report. The value of the purchase order is being rationalized with the assignment fee total.

CONCLUSION

This EA will review alternatives and generate a preferred solution for linking a major east-west recreational pathway corridor near the northern boundary of the City, as identified in the City of London's Bicycle Master Plan. The EA process will include stakeholder participation throughout the

--	--

study. The final report will include a preferred solution to provide a safe and functional recreational pathway linkage across Richmond Street North for all Londoners.

Recommendation

Based on the technical evaluation of the proposals, it is recommended AECOM be awarded the consulting assignment for the Richmond Street North Pedestrian Crossing Environmental Assessment at an upset amount of \$199,550 excluding HST.

With Council acceptance, the EA will be initiated in May with completion anticipated in the summer of 2015.

Acknowledgements

This report was prepared with the assistance of Jeff Bruin, Environmental & Parks Planning along with Karl Grabowski, P.Eng. and Shaun Chen, EIT, of the Transportation Planning & Design Division.

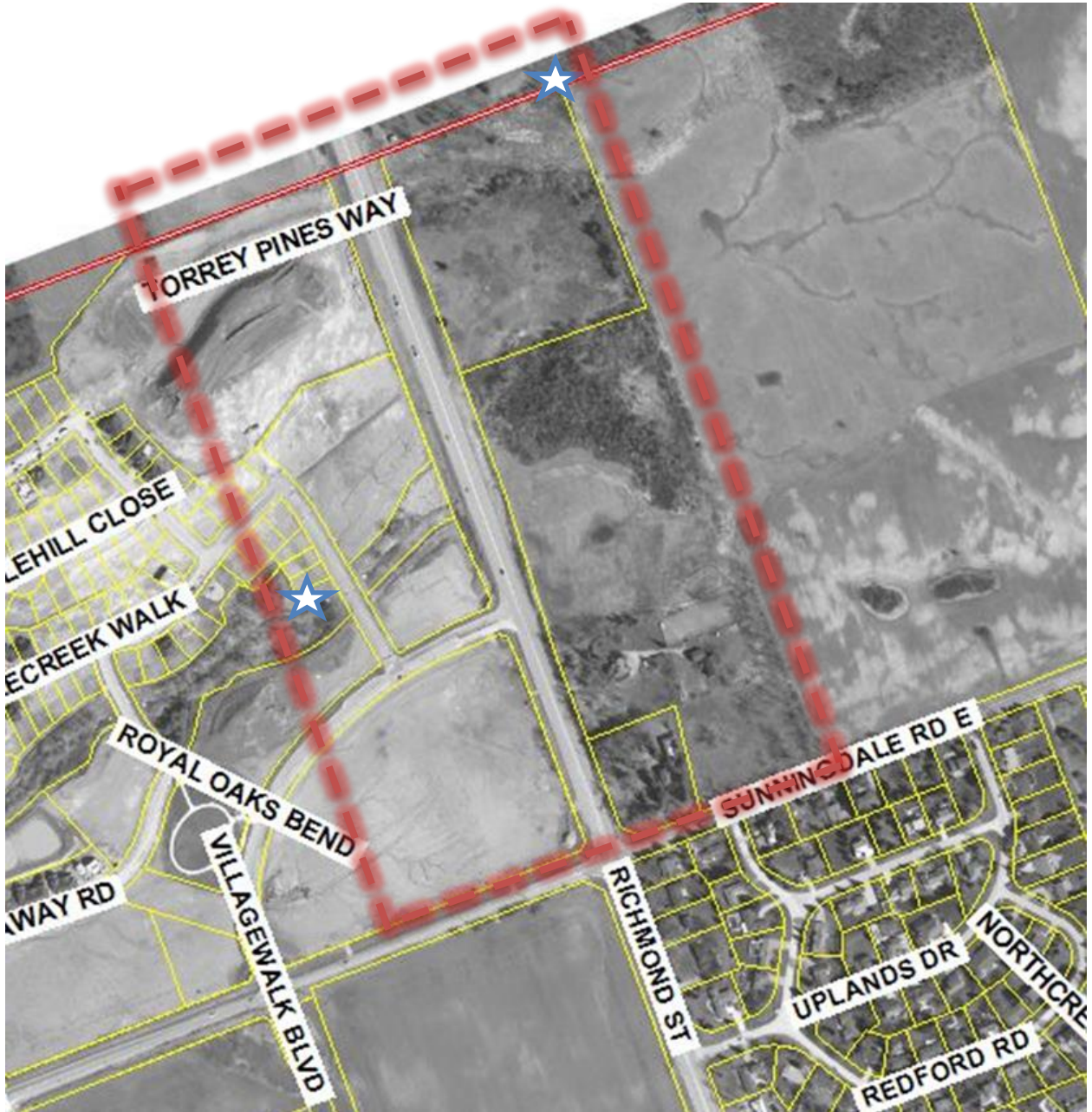
SUBMITTED BY:	RECOMMENDED BY:
DOUG MACRAE, P.ENG. DIVISION MANAGER TRANSPORTATION PLANNING & DESIGN	EDWARD SOLDO, P.ENG. DIRECTOR, ROADS AND TRANSPORTATION
REVIEWED & CONCURRED BY:	
JOHN BRAAM, P.ENG. MANAGING DIRECTOR, ENVIRONMENTAL & ENGINEERING SERVICES & CITY ENGINEER	

Attach: Appendix "A" – Sources of Financing
 Appendix "B" - Study Area Map

cc. Antony Fediw, AECOM
 Paula Neto, Dillon Consulting
 Robin Campbell, Stantec
 Pat Shack

--	--

Appendix "B" - Study Area Map



Known Terminus Points of Recreational Pathway System; Study to determine the most appropriate way of linking these two points across Richmond Street.



Boundary of the Study Area