

THAMES VALLEY CORRIDOR PLAN

APPENDIX

Legend

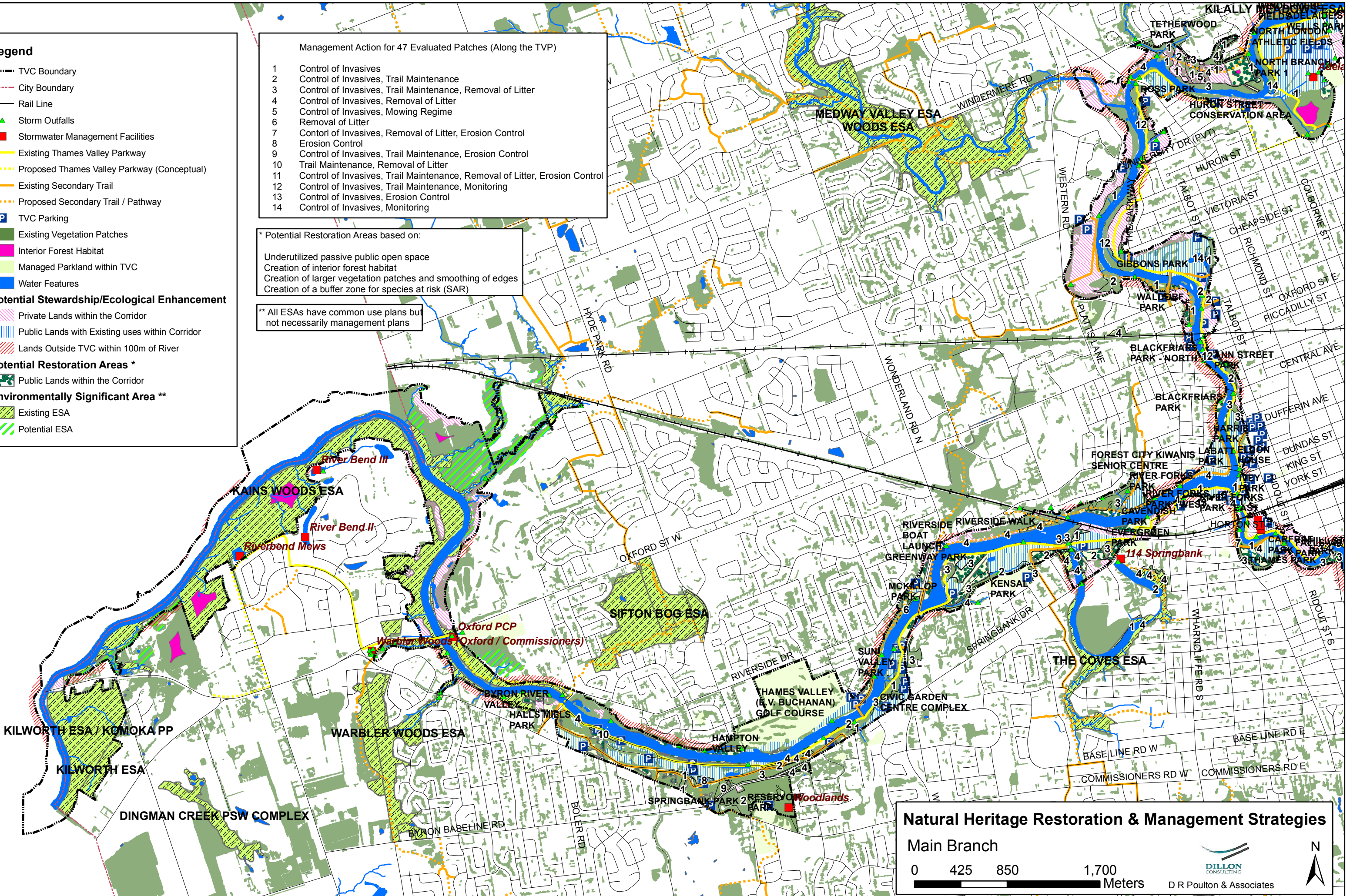
- TVC Boundary
- City Boundary
- Rail Line
- Storm Outfalls
- Stormwater Management Facilities
- Existing Thames Valley Parkway
- Proposed Thames Valley Parkway (Conceptual)
- Existing Secondary Trail
- Proposed Secondary Trail / Pathway
- TVC Parking
- Existing Vegetation Patches
- Interior Forest Habitat
- Managed Parkland within TVC
- Water Features
- Potential Stewardship/Ecological Enhancement**
- Private Lands within the Corridor
- Public Lands with Existing uses within Corridor
- Lands Outside TVC within 100m of River
- Potential Restoration Areas ***
- Public Lands within the Corridor
- Environmentally Significant Area ****
- Existing ESA
- Potential ESA

Management Action for 47 Evaluated Patches (Along the TVP)

1	Control of Invasives
2	Control of Invasives, Trail Maintenance
3	Control of Invasives, Trail Maintenance, Removal of Litter
4	Control of Invasives, Removal of Litter
5	Control of Invasives, Mowing Regime
6	Removal of Litter
7	Control of Invasives, Removal of Litter, Erosion Control
8	Erosion Control
9	Control of Invasives, Trail Maintenance, Erosion Control
10	Trail Maintenance, Removal of Litter
11	Control of Invasives, Trail Maintenance, Removal of Litter, Erosion Control
12	Control of Invasives, Trail Maintenance, Monitoring
13	Control of Invasives, Erosion Control
14	Control of Invasives, Monitoring

* Potential Restoration Areas based on:
 Underutilized passive public open space
 Creation of interior forest habitat
 Creation of larger vegetation patches and smoothing of edges
 Creation of a buffer zone for species at risk (SAR)

** All ESAs have common use plans but not necessarily management plans



Natural Heritage Restoration & Management Strategies

Main Branch

0 425 850 1,700 Meters

DR Poulton & Associates

Legend

- TVC Boundary
- - - City Boundary
- Rail Line
- ▲ Storm Outfalls
- Stormwater Management Facilities
- Existing Thames Valley Parkway
- ⋯ Proposed Thames Valley Parkway (Conceptual)
- Existing Secondary Trail
- ⋯ Proposed Secondary Trail / Pathway
- P TVC Parking
- Existing Vegetation Patches
- Interior Forest Habitat
- Managed Parkland within TVC
- Water Features
- Potential Stewardship/Ecological Enhancement**
- ▨ Private Lands within the Corridor
- ▨ Public Lands with Existing uses within Corridor
- ▨ Lands Outside TVC within 100m of River
- Potential Restoration Areas ***
- Public Lands within the Corridor
- Environmentally Significant Area ****
- ▨ Existing ESA
- ▨ Potential ESA

Management Action for 47 Evaluated Patches (Along the TVP)

- 1 Control of Invasives
- 2 Control of Invasives, Trail Maintenance
- 3 Control of Invasives, Trail Maintenance, Removal of Litter
- 4 Control of Invasives, Removal of Litter
- 5 Control of Invasives, Mowing Regime
- 6 Removal of Litter
- 7 Control of Invasives, Removal of Litter, Erosion Control
- 8 Erosion Control
- 9 Control of Invasives, Trail Maintenance, Erosion Control
- 10 Trail Maintenance, Removal of Litter
- 11 Control of Invasives, Trail Maintenance, Removal of Litter, Erosion Control
- 12 Control of Invasives, Trail Maintenance, Monitoring
- 13 Control of Invasives, Erosion Control
- 14 Control of Invasives, Monitoring

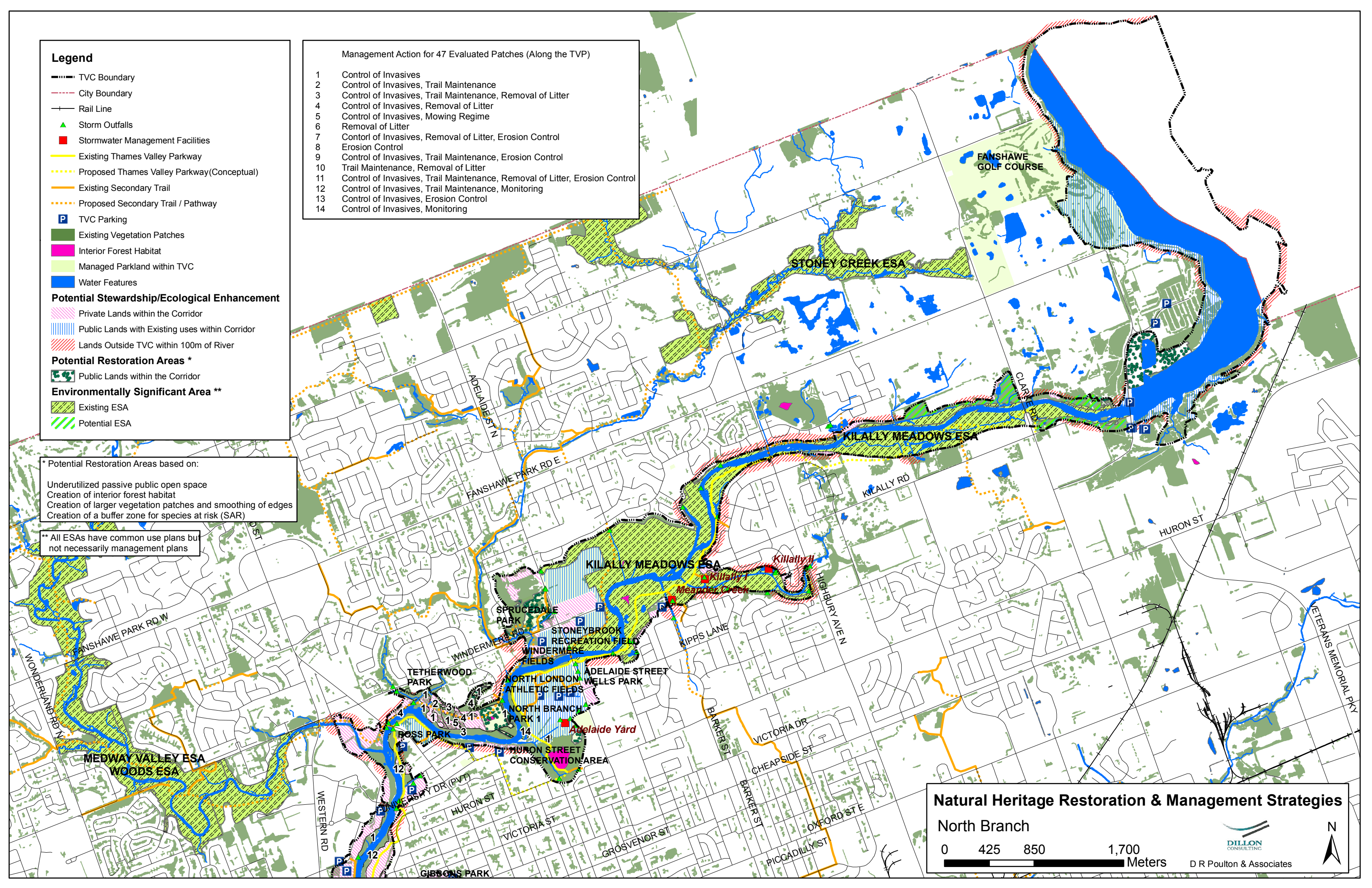
* Potential Restoration Areas based on:
 Underutilized passive public open space
 Creation of interior forest habitat
 Creation of larger vegetation patches and smoothing of edges
 Creation of a buffer zone for species at risk (SAR)

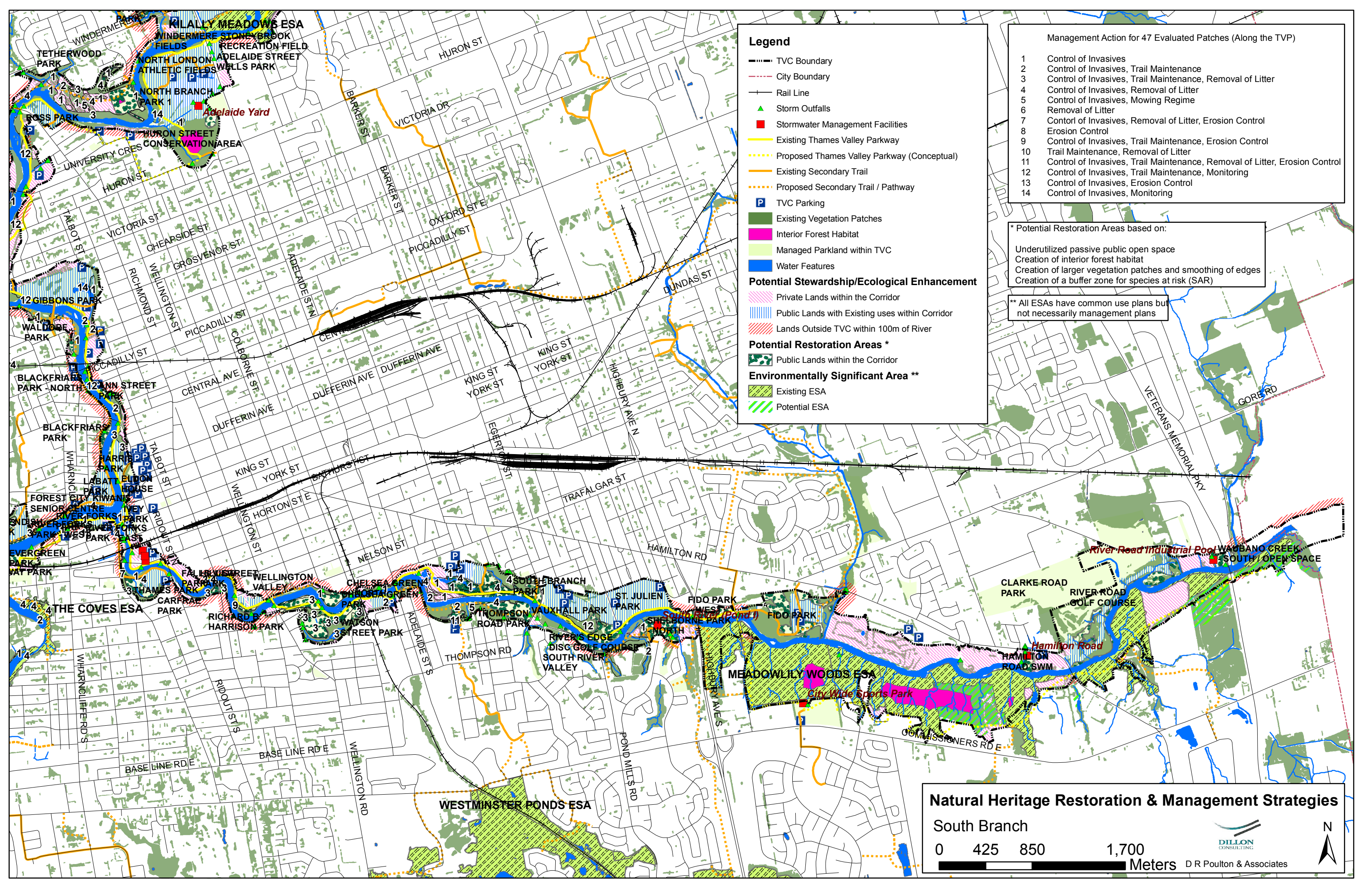
** All ESAs have common use plans but not necessarily management plans

Natural Heritage Restoration & Management Strategies
 North Branch

0 425 850 1,700 Meters

DILLON CONSULTING
 D R Poulton & Associates





Legend

- TVC Boundary
- - - City Boundary
- Rail Line
- ▲ Storm Outfalls
- Stormwater Management Facilities
- Existing Thames Valley Parkway
- Proposed Thames Valley Parkway (Conceptual)
- Existing Secondary Trail
- Proposed Secondary Trail / Pathway
- P TVC Parking
- Existing Vegetation Patches
- Interior Forest Habitat
- Managed Parkland within TVC
- Water Features

Potential Stewardship/Ecological Enhancement

- Private Lands within the Corridor
- Public Lands with Existing uses within Corridor
- Lands Outside TVC within 100m of River

Potential Restoration Areas *

- Public Lands within the Corridor

Environmentally Significant Area **

- Existing ESA
- Potential ESA

Management Action for 47 Evaluated Patches (Along the TVP)

1	Control of Invasives
2	Control of Invasives, Trail Maintenance
3	Control of Invasives, Trail Maintenance, Removal of Litter
4	Control of Invasives, Removal of Litter
5	Control of Invasives, Mowing Regime
6	Removal of Litter
7	Control of Invasives, Removal of Litter, Erosion Control
8	Erosion Control
9	Control of Invasives, Trail Maintenance, Erosion Control
10	Trail Maintenance, Removal of Litter
11	Control of Invasives, Trail Maintenance, Removal of Litter, Erosion Control
12	Control of Invasives, Trail Maintenance, Monitoring
13	Control of Invasives, Erosion Control
14	Control of Invasives, Monitoring

* Potential Restoration Areas based on:

- Underutilized passive public open space
- Creation of interior forest habitat
- Creation of larger vegetation patches and smoothing of edges
- Creation of a buffer zone for species at risk (SAR)

** All ESAs have common use plans but not necessarily management plans

Natural Heritage Restoration & Management Strategies

South Branch

0 425 850 1,700 Meters

DILLO CONSULTING

D R Poulton & Associates