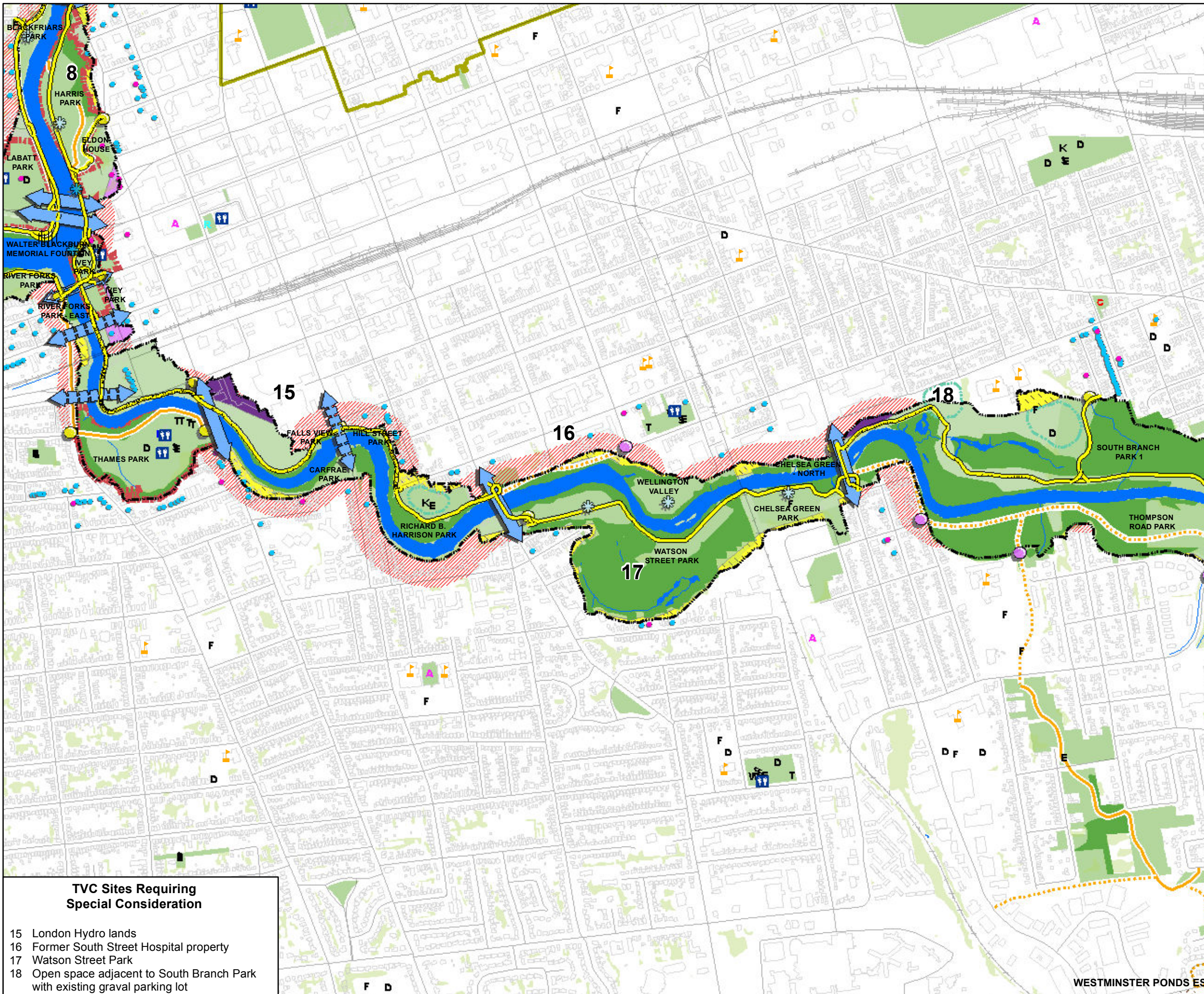


Thames Valley Corridor Plan

Figure 5a: South Branch



- Character Areas**
- Corridor Gateway
- Valley Access Point**
- Existing
 - Potential
- River Edge Access**
- Existing
 - Potential
- Valley Crossing**
- Vehicular
 - Pedestrian
 - Both
- Activity Areas**
- Existing
 - Potential
- Land Use**
- Existing Vegetation
 - Parkland/Open Space
 - Natural Area
 - Existing ESA
 - Residential
 - Industrial
 - Downtown Area
 - Central Business District
 - Existing Thames Valley Parkway
 - Proposed Thames Valley Parkway
 - Existing Secondary Pathway
 - Proposed Secondary Trail or Pathway
 - Structures
- Recreation Features**
- Washroom
 - Arenas
 - Skateboard Park
 - Community Centre
 - Baseball Diamond
 - Play Equipment
 - Soccer Field
 - Basketball Court
 - Community Pool
 - Swing Set
 - Tennis Court
 - Wading Pool
 - Outdoor Ice Rink
 - Schools
 - Golf Course
- Heritage Features**
- Existing Heritage Conservation District (HCD)
 - Proposed Heritage Landscape/HCD
 - Designated Heritage Building
 - Listed Heritage Building
- Edge Zones**
- Area Outside TVC within 100m of Normal Water Line of the Thames River

- TVC Sites Requiring Special Consideration**
- 15 London Hydro lands
 - 16 Former South Street Hospital property
 - 17 Watson Street Park
 - 18 Open space adjacent to South Branch Park with existing gravel parking lot

