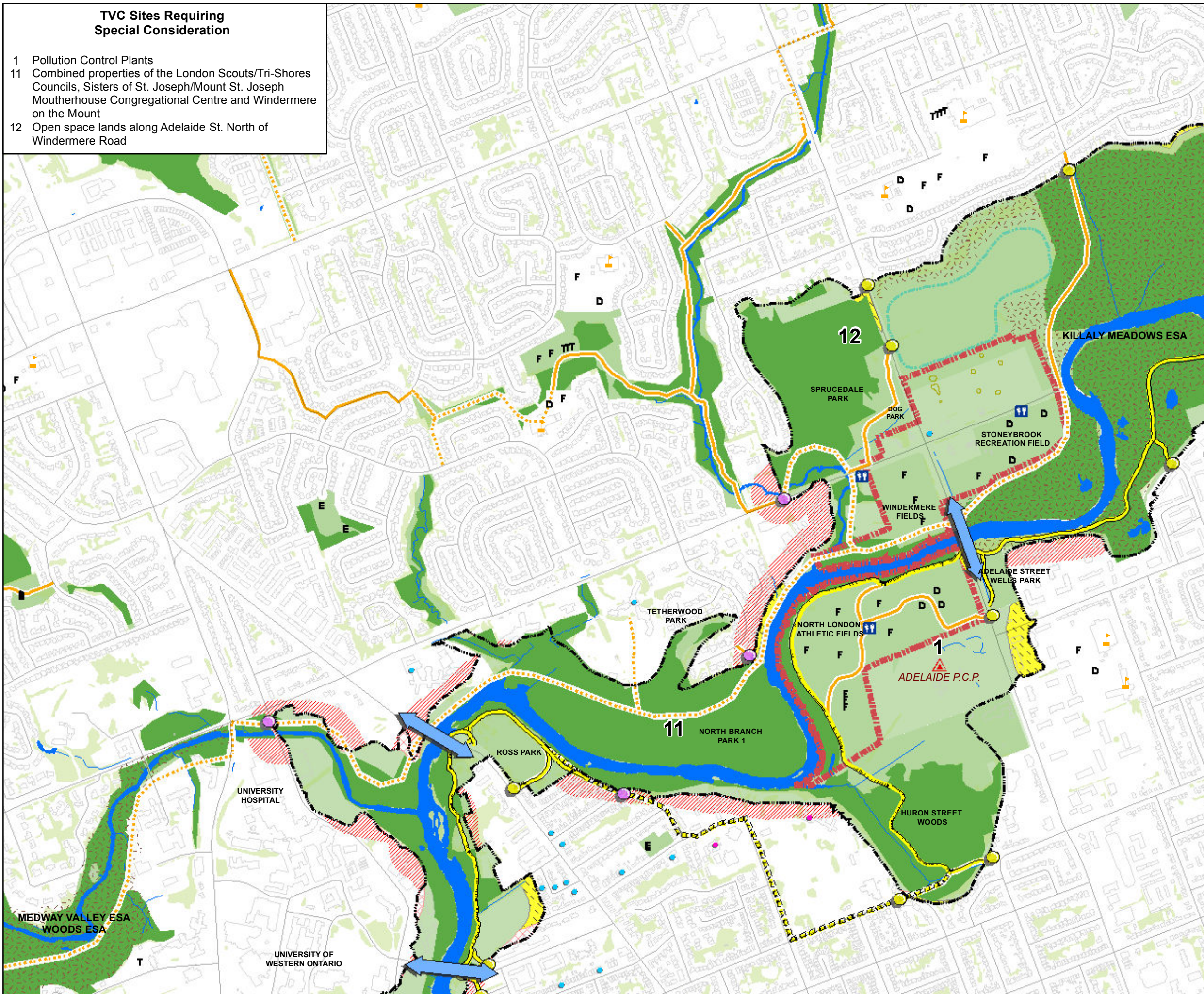


TVC Sites Requiring Special Consideration

- 1 Pollution Control Plants
- 11 Combined properties of the London Scouts/Tri-Shores Councils, Sisters of St. Joseph/Mount St. Joseph Mouserhouse Congregational Centre and Windermere on the Mount
- 12 Open space lands along Adelaide St. North of Windermere Road

Thames Valley Corridor Plan

Figure 4b: North Branch



Character Areas

- Corridor Gateway
- Valley Access Point**
 - Existing
 - Potential
- River Edge Access**
 - Existing
 - Potential
- Valley Crossing**
 - Vehicular
 - Pedestrian
 - Both
- Activity Areas**
 - Existing
 - Potential
- Land Use**
 - Existing Vegetation
 - Parkland/Open Space
 - Natural Area
 - Existing ESA
 - Residential
 - Industrial
 - Downtown Area
 - Central Business District
 - Existing Thames Valley Parkway
 - Proposed Thames Valley Parkway
 - Existing Secondary Pathway
 - Proposed Secondary Trail or Pathway
 - Structures
- Recreation Features**
 - Washroom
 - Arenas
 - Skateboard Park
 - Community Centre
 - Baseball Diamond
 - Play Equipment
 - Soccer Field
 - Basketball Court
 - Community Pool
 - Swing Set
 - Tennis Court
 - Wading Pool
 - Outdoor Ice Rink
 - Schools
 - Golf Course
- Heritage Features**
 - Existing Heritage Conservation District (HCD)
 - Proposed Heritage Landscape/HCD
 - Designated Heritage Building
 - Listed Heritage Building
- Edge Zones**
 - Area Outside TVC within 100m of Normal Water Line of the Thames River

