

Bill No. 137  
2014

By-law No. C.P.-1284(ua)-\_\_\_\_\_

A by-law to amend the Official Plan for the City of London, 1989 relating to a portion of 1424 Clarke Road, 2120 and 2204 Huron Street and 16090 Robins Hill Road.

The Municipal Council of The Corporation of the City of London enacts as follows:

1. Amendment No. \_\_\_\_ to the Official Plan for the City of London Planning Area – 1989, as contained in the text attached hereto and forming part of this by-law, is adopted.
2. This by-law shall come into effect in accordance with subsection 17(38) of the *Planning Act, R.S.O. 1990, c.P.13*.

PASSED in Open Council on March 18, 2014.

Joe Fontana  
Mayor

Catharine Saunders  
City Clerk

First Reading – March 18, 2014  
Second Reading - March 18, 2014  
Third Reading - March 18, 2014

**AMENDMENT NO. \_\_\_\_**  
**to the**

**OFFICIAL PLAN FOR THE CITY OF LONDON**

A. PURPOSE OF THIS AMENDMENT

The purpose of this Amendment is:

1. To change the designation of certain lands described herein to Environmental Review on Schedule "A", Land Use, to the Official Plan for the City of London to protect the natural features until further review is completed.

B. LOCATION OF THIS AMENDMENT

1. This Amendment applies to a portion of land located at 1424 Clarke Road, 2120 & 2204 Huron Street and 16090 Robins Hill Road in the City of London.

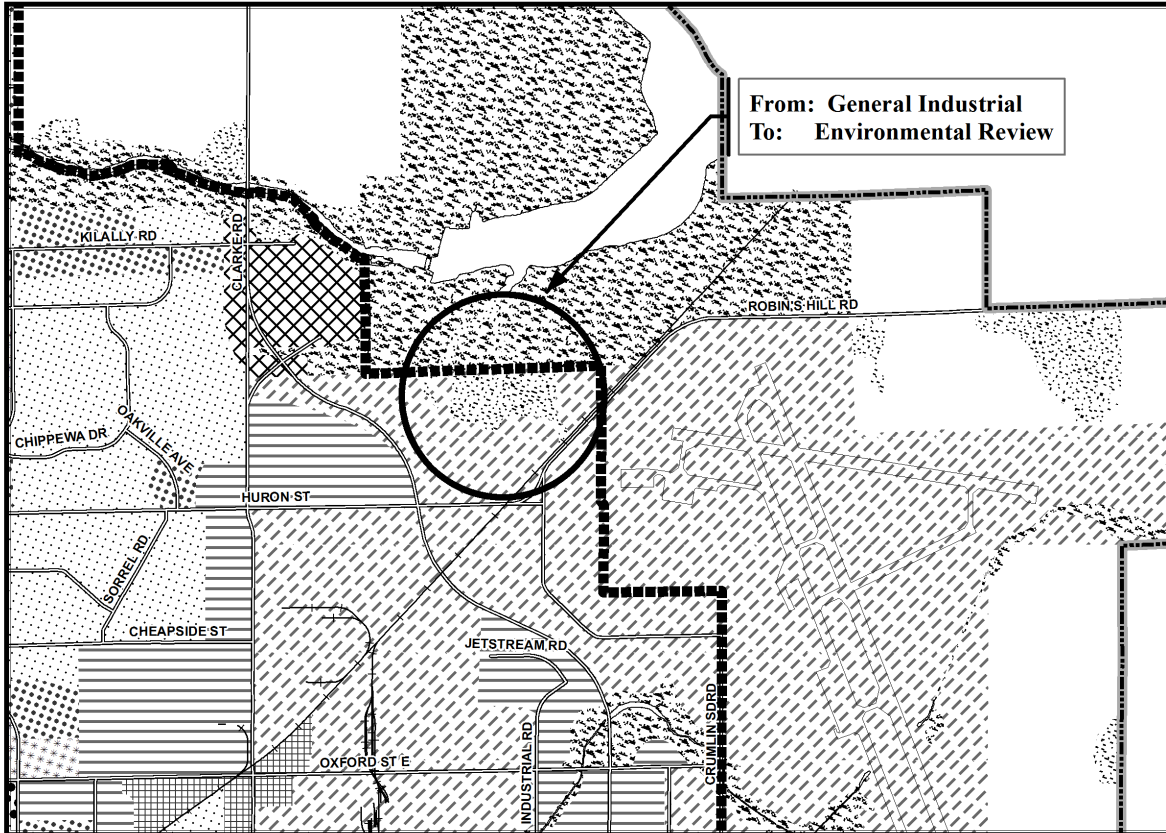
C. BASIS OF THE AMENDMENT

The recommended Official Plan amendment to protect unevaluated vegetation patch 08022 on Schedule Land Use map of the Official Plan. This is considered appropriate after reviewing the significance of the existing woodland as per Official Plan Policy 15.4.5.1 and determining that portions of the patch could contain significant natural features. No delineation of the open space should take place until further review is complete to accurately identify the areas of importance.

D. THE AMENDMENT

The Official Plan for the City of London is hereby amended as follows:

Schedule "A", Land Use, to the Official Plan for the City of London Planning Area is amended by designating a portion of those lands located at 1424 Clarke Road, 2120 & 2204 Huron Street and 16090 Robins Hill Road in the City of London, as indicated on "Schedule 1-9" attached hereto **from** General Industrial **to** Environmental Review.



**Legend**

- |  |                                   |
|--|-----------------------------------|
| Downtown                                 | Office Business Park              |
| Enclosed Regional Commercial Node        | General Industrial                |
| New Format Regional Commercial Node      | Light Industrial                  |
| Community Commercial Node                | Regional Facility                 |
| Neighbourhood Commercial Node            | Community Facility                |
| Main Street Commercial Corridor          | Open Space                        |
| Auto-Oriented Commercial Corridor        | Urban Reserve - Community Growth  |
| Multi-Family, High Density Residential   | Urban Reserve - Industrial Growth |
| Multi-Family, Medium Density Residential | Rural Settlement                  |
| Low Density Residential                  | Environmental Review              |
| Office Area                              | Agriculture                       |
| Office/Residential                       | Urban Growth Boundary             |

*This is an excerpt from the Planning Division's working consolidation of Schedule A to the City of London Official Plan, with added notations.*

**SCHEDULE 1-9  
TO  
OFFICIAL PLAN**

AMENDMENT NO. \_\_\_\_\_

PREPARED BY: Graphics and Information Services



Scale 1:30,000



FILE NUMBER: OZ-8271

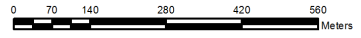
PLANNER: MC

TECHNICIAN: CK

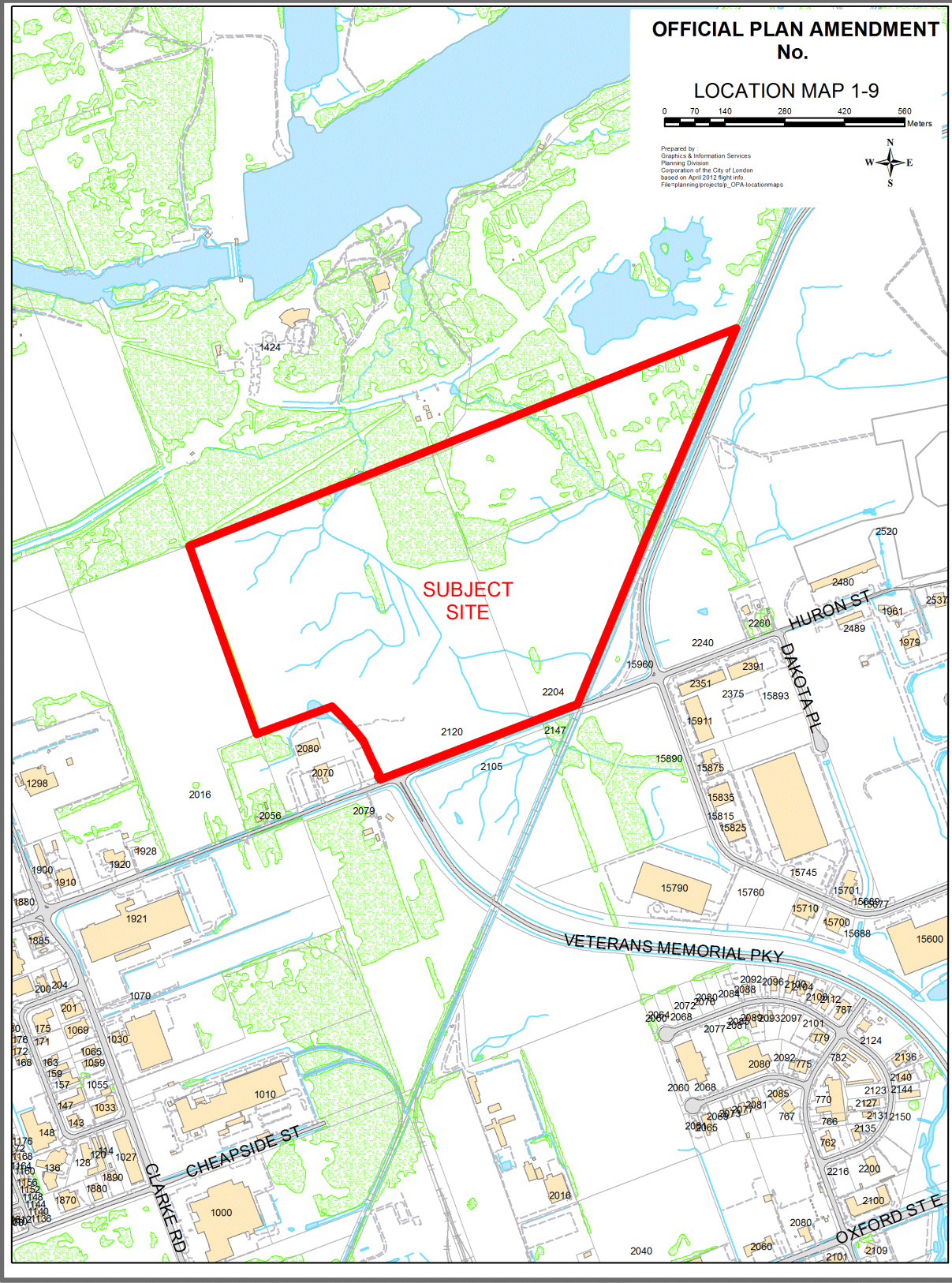
DATE: 2014/02/10

**OFFICIAL PLAN AMENDMENT  
No.**

**LOCATION MAP 1-9**



Prepared by:  
Graphics & Information Services  
Planning Division  
Corporation of the City of London  
based on April 2012 flight info.  
File: planning/projects/opa\_locationmaps



**SUBJECT  
SITE**

HURON ST

DAKOTA PL

VETERANS MEMORIAL PKY

CHEAPSIDE ST

CLARK RD

OXFORD ST E