

Bill No. 129
2014

By-law No. C.P.-1284(ts)-___

A by-law to amend the Official Plan for the City of London, 1989 relating to 1900 Gore Road.

The Municipal Council of The Corporation of the City of London enacts as follows:

1. Amendment No. ___ to the Official Plan for the City of London Planning Area – 1989, as contained in the text attached hereto and forming part of this by-law, is adopted.
2. This by-law shall come into effect in accordance with subsection 17(38) of the *Planning Act, R.S.O. 1990, c.P.13*.

PASSED in Open Council on March 18, 2014.

Joe Fontana
Mayor

Catharine Saunders
City Clerk

First Reading - March 18, 2014
Second Reading - March 18, 2014
Third Reading - March 18, 2014

AMENDMENT NO. _____

to the

OFFICIAL PLAN FOR THE CITY OF LONDON

A. PURPOSE OF THIS AMENDMENT

The purpose of this Amendment is:

1. To amend Schedule B-1- Natural Heritage Features, to delete “Unevaluated Vegetation Patch”.

B. LOCATION OF THIS AMENDMENT

1. This Amendment applies to lands located at 1900 Gore Road in the City of London.

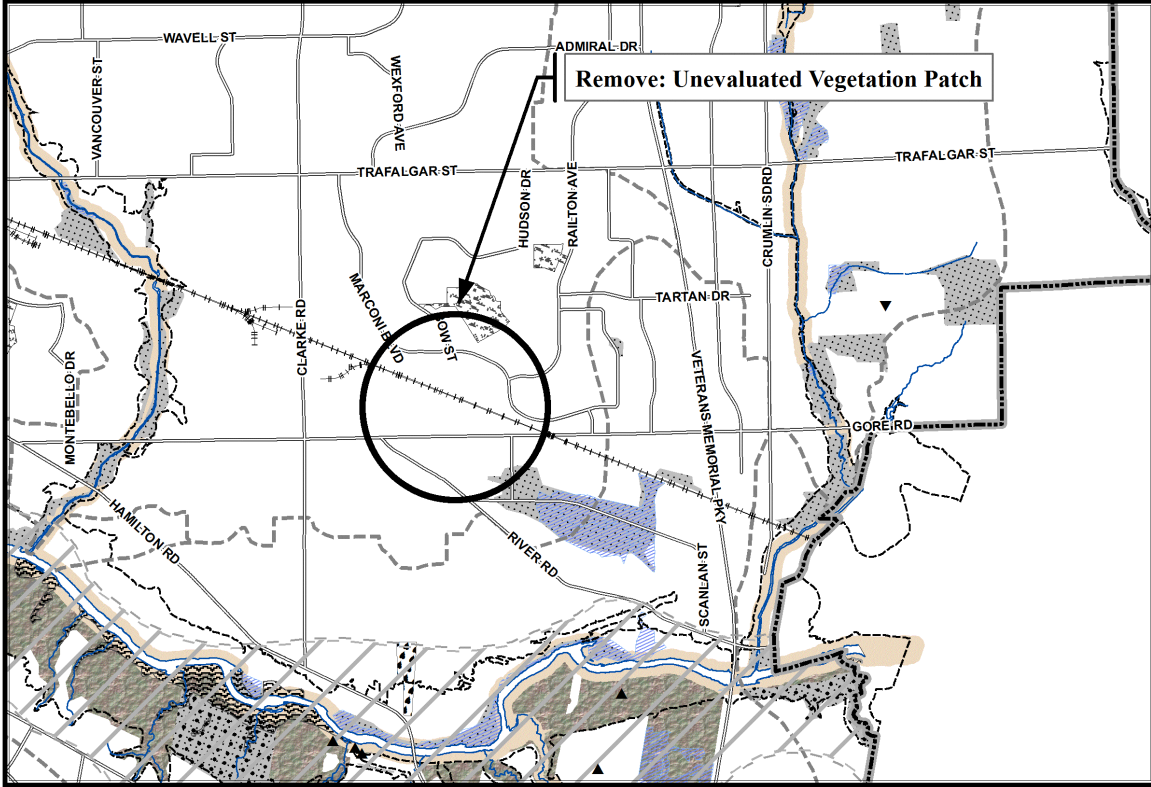
C. BASIS OF THE AMENDMENT

The recommended Official Plan amendment to delete unevaluated vegetation patch 04007 from Schedule B-1, Natural Heritage Features of the Official Plan is appropriate after reviewing the significance of the existing woodland as per Official Plan Policy 15.4.5.1 and determining that no significant features exist where the patch is identified.

D. THE AMENDMENT

The Official Plan for the City of London is hereby amended as follows:

Schedule B-1 – Natural Heritage Features of the Official Plan for the City of London is amended by deleting unevaluated vegetation patch 04007.



NATURAL HERITAGE SYSTEM

- ESAs
- Potential ESAs
- Significant Woodlands
- Woodlands
- Unevaluated Vegetation Patches
- Significant River, Stream, and Ravine Corridors
- Unevaluated Stream and Ravine Corridors
- Provincially Significant Wetlands
- Locally Significant Wetlands
- Unevaluated Wetlands
- Potential Naturalization Areas
- Potential Upland Corridors
- Ground Water Recharge Areas

NATURAL HAZARDS

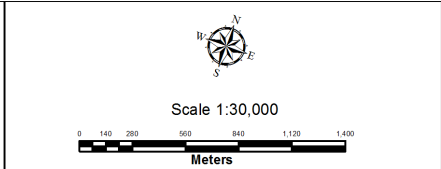
- Maximum Hazard Line
NOTE 1: Hazard Lines shown on this map are approximate. The precise delineation of hazard line mapping available from the Conservation Authority having jurisdiction.
NOTE 2: Flood Fringe mapping for certain areas of the city is available from the Upper Thames River Conservation Authority.

Base Map Features

- Railways
- Water Courses/Ponds
- Streets (refer to Schedule "C")
- Conservation Authority Boundary
- Subwatershed Boundary
- Big Picture Meta-Cores and Meta-Corridors

This is an excerpt from the Planning Division's working consolidation of Schedule B1 to the City of London Official Plan, with added notations.

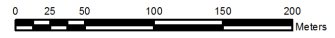
**SCHEDULE 1-1
TO
OFFICIAL PLAN**
AMENDMENT NO. _____
PREPARED BY: Graphics and Information Services



FILE NUMBER: OZ-8271_1
PLANNER: MC
TECHNICIAN: CK
DATE: 2014/01/04

**OFFICIAL PLAN AMENDMENT
No.**

LOCATION MAP 1-1



Prepared by:
Graphics & Information Services
Planning Division
Corporation of the City of London
based on April 2012 flight info.
File: planning/projects/OPA-locationmaps

