

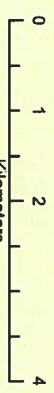


**NOT CITY OF LONDON
BACKGROUND STUDY**

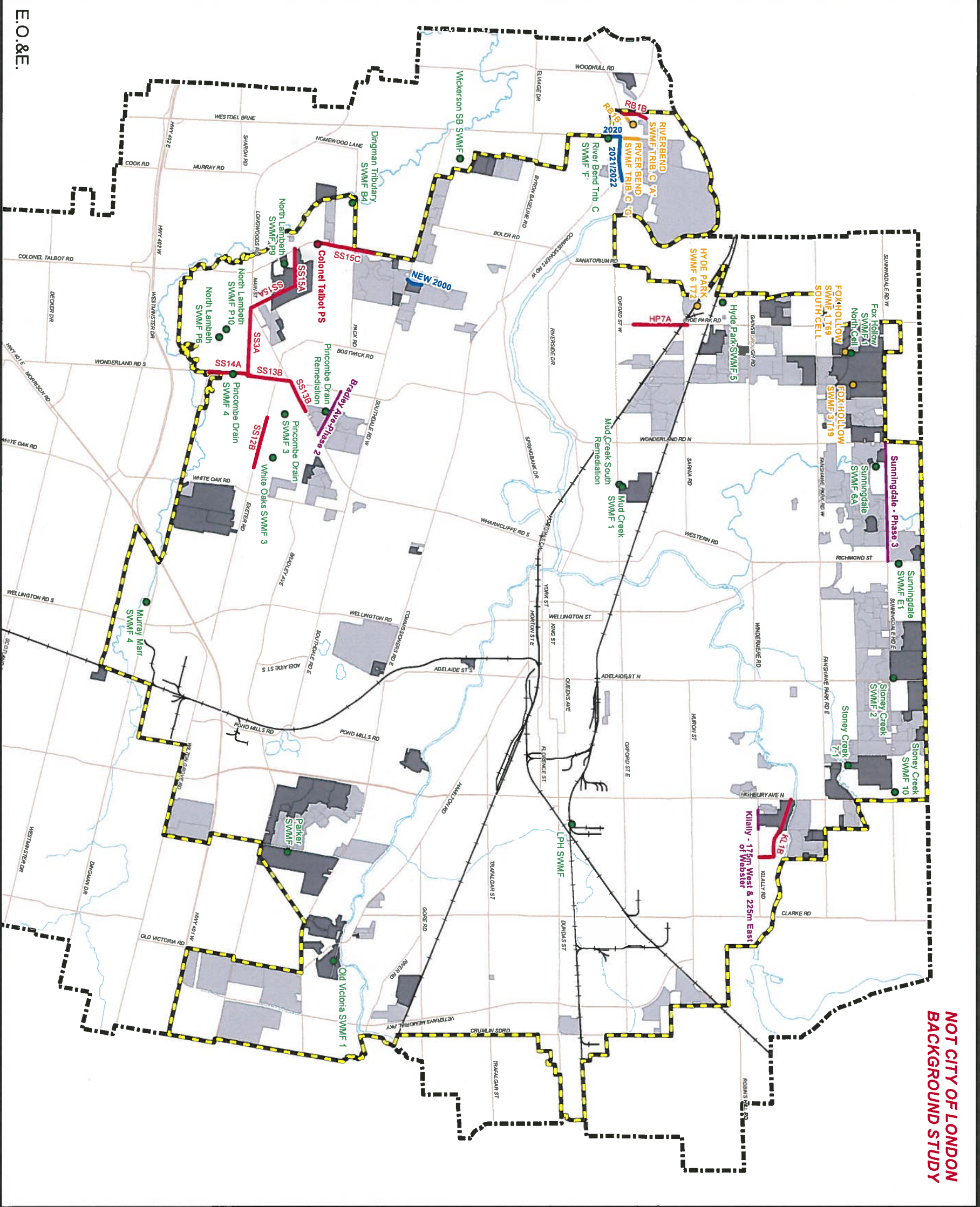
**2014+ GMIS UPDATE
Draft Schedule of Works**

**0-5 Years (2014 - 2019)
YEAR OF CONSTRUCTION**

- MAJOR ROADS
- RAILWAYS
- RIVERS / STREAMS
- CITY LIMITS
- GROWTH BOUNDARY
- REGISTERED SUBDIVISIONS (2000 - 2013)
- ACTIVE SUBDIVISION APPLICATIONS
- TRANSPORTATION
- SANITARY
- STORM
- WATER
- PCP/SANITARY PUMPING STATIONS
- SWM FACILITIES
- INTERSECTION WORKS
- WATER PUMPING STATIONS
- APPROVED PROJECTS
- DEFERRED TO 2014



PREPARED BY: Development Services
 CREATION DATE: February 5, 2014
 LOCATION: \\c:\l\giswork\planning\projects_DAB\04_GMIS\project_titling_maps\projects\2014+_GMIS_schedule_of_works_0-5_years.mxd



E.O.&E.

Table A1: GMS ANNUAL UPDATE 2014 DRAFT DETAILED LIST OF WORKS AND COSTS BY SERVICE 5 YEAR PROJECTS (2014 to 2019)

PREVIOUS GMS TIMING	PROPOSED TIMING	DEVELOPER REQUEST	DC ID	GENERAL DESCRIPTION	SERVICE	TOTAL COST	GROWTH	NON-GROWTH
2016	2019		DC14-MS0011	London Psychiatric Hospital (LPH) SWMF	SWM	\$3,577,358	100%	\$0
NEW	2014-2019		DC14-WW0203	Infill and Intensification Corridors Sanitary Sewer Servicing	Sanitary	\$1,037,500	90%	\$103,750
NEW	2014-2019		DC14-WW0202	Infill and Intensification Nodes Sanitary Sewer Servicing	Sanitary	\$1,215,575	85%	\$181,518
NEW	2014-2019		DC14-MS0102	Infill and Intensification Nodes Storm Sewer Servicing	SWM	\$3,445,228	93%	\$230,430
NEW	2014-2019		DC14-WD0102	Infill and Intensification Nodes Water Servicing	Water	\$2,747,595	95%	\$151,111
2013	2015		DC14-MS0012	Mud Creek South Channel Remediation	SWM	\$640,000	100%	\$0
2016	2015		DC14-MS0013	Mud Creek SWMF 1	SWM	\$6,114,000	100%	\$666,806
NORTH								
2016	2016		DC14-MS0033	Stoney Creek 7	SWM	\$1,668,185	100%	\$0
2018	2018		DC14-MS0034	Stoney Creek SWMF 10	SWM	\$1,961,000	100%	\$0
2017	2017		TOTAL STONEY CREEK PROJECTS			\$3,629,185		\$0
2016	2016		DC14-MS0037	Sunningdale SWMF 6A	SWM	\$1,696,409	100%	\$0
2016	2016		TOTAL SUNNINGDALE PROJECTS			\$1,696,409		\$0
2016	2016		DC14-MS0035	Stoney Creek SWMF 2	SWM	\$1,994,242	100%	\$0
2017	2017		DC14-MS0038	Sunningdale SWMF E1	SWM	\$2,457,248	100%	\$0
NORTHWEST								
NEW	2019		DC14-MS0006	Fox Hollow 1 - Phase 2	SWM	\$3,888,839	100%	\$0
10+	2019		DC14-RS0017	Wonderland (2 to 4 through lanes) 12 (2c): Sunningdale Road-Stage 2 - Phase 3 - Richmond to	Road	\$19,400,000	94%	\$1,149,150
2014	2015		DC14-MS0008	Hyde Park SWMF 5 - Phase 1	SWM	\$6,518,000	100%	\$0
2014	2014		DC14-WW0001	HP7A - Hyde Park Growth Area Oxford PCP sewer shed	Sanitary	\$2,300,489	85%	\$345,070
NORTH EAST								
2017	2017		DC14-WW0008	KL18 - Killybeg Growth Area Adelaide PCP sewer shed	Sanitary	\$1,251,450	100%	\$0
10+	2016		DC14-RS0015	Killybeg Road - Phase 1 - 175 m west of Webster to 225m east of Webster (2LRA)	Road	\$1,840,000	89%	\$195,600
2017	2016		TOTAL NORTH EAST PROJECTS			\$3,091,450		\$195,600
WEST								
2014	2014		DC14-MS0041	Wickerson SB SWMF	SWM	\$3,227,000	100%	\$0
2014	2014		TOTAL BYRON PROJECTS			\$3,227,000		\$0
2016	2016		DC14-MS0032	River Bend SWMF Trib. C SWMF 'F'	SWM	\$4,300,000	100%	\$0
2014	2014		DC14-WD0023	River Bend Growth Area - Westside Bourne (Mid Westside Bourne to Oxford)	Water	\$458,156	100%	\$0
2014	2014		DC14-WD0024	River Bend Growth Area - Oxford (Westside Bourne to Kains)	Water	\$1,109,349	100%	\$0
2014	2014		DC14-WW0002	RB18 - River Bend Growth Area Oxford PCP sewer shed	Sanitary	\$2,230,740	100%	\$0
WESTMOUNT								
2014	2014		DC14-WD0031	Talbot Growth Area - Tilman Road (Southdale to End)	Water	\$688,500	100%	\$0
WESTMOUNT PROJECTS								
						\$688,500		\$0
SOUTHEAST								
2014	2015		DC14-MS0028	Old Victoria SWMF 1	SWM	\$3,314,746	100%	\$0
10+	2016		DC14-MS0027	Parker SWMF - Phase 1	SWM	\$4,367,000	100%	\$0
SOUTHWEST								
2018	2017		DC14-RS0012	22c: Bradley Avenue Extension-Phase 2 - Whamcliffe to Wonderland (4 through lanes)	Road	\$12,975,469	100%	\$0
2014	2014		DC14-MS0028	Pincombe Drain Remediation	SWM	\$4,200,000	100%	\$0
LAMBETH								
2015	2015		DC14-WW0004	SS3A - Lambeth Growth Area Greenway PCP sewer shed	Sanitary	\$8,385,224	100%	\$0
2016	2016		DC14-WW0005	SS15A - Lambeth Growth Area Greenway PCP sewer shed	Sanitary	\$3,439,973	100%	\$0
2016	2016		DC14-MS0025	North Lambeth P9	SWM	\$3,795,220	100%	\$0
2018	2018		DC14-MS0018	North Lambeth P10 (Dingman Tributary D2) Phase 1	SWM	\$4,079,581	9%	\$37,124,419
2020	2020		DC14-MS0022	North Lambeth P6	SWM	\$2,835,755	100%	\$0
LONGWOODS								
2018	2015		DC14-WW0003	SS14A - Wonderland Growth Area Greenway PCP sewer shed	Sanitary	\$4,775,807	95%	\$238,790
2018	2016		DC14-WW0007	SS12B - Longwoods Growth Area Greenway PCP sewer shed	Sanitary	\$5,618,565	100%	\$0
2017	2018		DC14-WW0009	SS13B - Wonderland/Boswick E Growth Area Greenway PCP sewer shed	Sanitary	\$6,579,144	100%	\$0
2016	2016		DC14-MS0029	Pincombe Drain SWMF 3	SWM	\$2,448,034	100%	\$0
2016	2016		DC14-MS0039	White Oaks SWMF 3	SWM	\$2,837,000	100%	\$0
2017	2017		DC14-MS0030	Pincombe Drain SWMF 4 - Phase 1	SWM	\$5,128,000	100%	\$0
2014	2014		DC14-MS0016	Murray Marr SWMF 4 - Phase 1	SWM	\$2,100,000	100%	\$0
TALBOT								
2017	2017		DC14-WW0006	SS15C - North Talbot Growth Area Greenway PCP sewer shed	Sanitary	\$4,144,983	100%	\$0
2015	2015		DC14-MS0005	Dingman Tributary SWMF B4	SWM	\$3,638,342	100%	\$0
2017	2017		DC14-WW0106	Colonel Talbot Pumping Station	WWPS	\$5,350,000	100%	\$0
TOTAL TALBOT PROJECTS								
						\$13,133,326		\$0
TOTAL SOUTHWEST PROJECTS								
						\$82,331,097		\$3,951,209
TOTAL 5 YEAR PROJECTS (2014 to 2019)								
						\$165,780,187		\$6,307,836
UPDATED GMS COST ESTIMATES								
						\$159,472,351		\$0

(E&O Excepted)

Note: Timing refers to the year of construction. Project is subject to inclusion in and the passing of the 2014 Development Charges Background Study. (1) Subject to confirmation of the need for an Environmental Assessment.



2014+ GMIS UPDATE Draft Schedule of Works

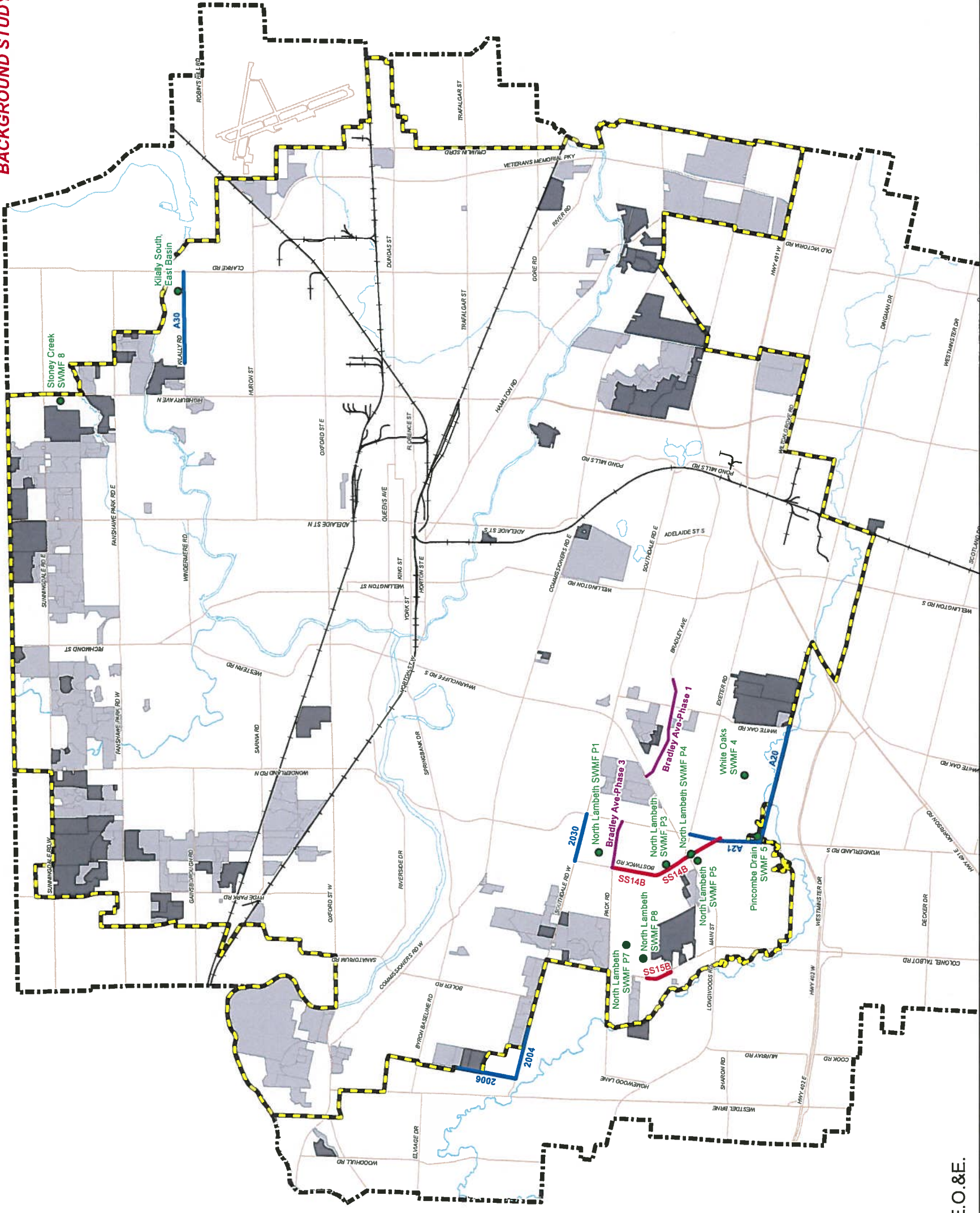
5+ Years (2020 and Beyond) YEAR OF CONSTRUCTION

- MAJOR ROADS
- RAILWAYS
- RIVERS / STREAMS
- CITY LIMITS
- GROWTH BOUNDARY
- REGISTERED SUBDIVISIONS (2000 - 2013)
- ACTIVE SUBDIVISION APPLICATIONS
- TRANSPORTATION
- SANITARY
- STORM
- WATER
- PCP/SANITARY PUMPING STATIONS
- SWM FACILITIES
- INTERSECTION WORKS
- WATER PUMPING STATIONS



PREPARED BY: Development Services
 CREATION DATE: February 5, 2014
 LOCATION: \\c:\file1\gis\work\planning\projects_DAB\lud_GMIS\project_timing_maps\projects2014+_GMIS_schedule_of_works_5+_years.mxd

**NOT CITY OF LONDON
BACKGROUND STUDY**



E.O.&E.

**Table A2: GMIS ANNUAL UPDATE 2014
DRAFT DETAILED LIST OF WORKS AND COSTS BY SERVICE
5+ YEAR PROJECTS (2020 and Beyond)**

PREVIOUS GMIS TIMING	PROPOSED TIMING	DC ID	GENERAL DESCRIPTION	SERVICE	UPDATED GMIS COST ESTIMATES		
					TOTAL COST	GROWTH	NON-GROWTH
NEW	2020-2033	DC14-WW02002	Infill and Intensification Nodes Sanitary Sewer Servicing	Sanitary	\$3,646,724	85%	\$3,102,177
NEW	2020-2033	DC14-WW02003	Infill and Intensification Corridors Sanitary Sewer Servicing	Sanitary	\$3,112,500	90%	\$2,801,250
NEW	2020-2033	DC14-MS01002	Infill and Intensification Nodes Storm Sewer Servicing	SWM	\$10,337,185	93%	\$9,645,895
NEW	2020-2033	DC14-WD01002	Infill and Intensification Nodes Water Servicing	Water	\$8,242,786	95%	\$7,789,453
BUILT OUT CITY							
NEW	2024	DC14-MS00036	Stoney Creek SWMF 8	SWM	\$1,051,000	100%	\$1,051,000
NORTH EAST							
10+	2024	DC14-MS00009	Kilaly South, East Basin	SWM	\$3,747,000	100%	\$3,747,000
NEW	2024	DC14-WD00012	Kilaly (A30) Growth Area - Kilaly Rd. (Highbury to Clarke)	Water	\$2,407,300	100%	\$2,407,300
WEST							
NEW	2024	DC14-WD00021	Summercrest Growth Area - Southdale (Bramblewood to Wickerson)	Water	\$1,257,181	100%	\$1,257,181
NEW	2024	DC14-WD00022	Summercrest Growth Area - Wickerson (Southdale to Wickerson Gate)	Water	\$1,361,030	100%	\$1,361,030
SOUTHWEST							
Beyond 2028	2029	DC14-RS00047	22c: Bradley Avenue Extension-Phase 3 - Wonderland to Boswick (2 through lanes)	Road	\$6,565,313	100%	\$6,565,313
NEW	2032	DC14-MS00019	North Lambeth P3 (Dingman Tributary D4)	SWM	\$3,529,753	100%	\$3,529,753
NEW	2033	DC14-MS00017	North Lambeth P1	SWM	\$2,871,613	100%	\$2,871,613
NEW	2024	DC14-WD00025	Boswick Growth Area - Southdale (Boswick to Wonderland)	Water	\$769,703	100%	\$769,703
Boswick							
Beyond 2028	2029	DC14-RS00047	22c: Bradley Avenue Extension-Phase 3 - Wonderland to Boswick (2 through lanes)	Road	\$6,565,313	100%	\$6,565,313
NEW	2032	DC14-MS00019	North Lambeth P3 (Dingman Tributary D4)	SWM	\$3,529,753	100%	\$3,529,753
NEW	2033	DC14-MS00017	North Lambeth P1	SWM	\$2,871,613	100%	\$2,871,613
NEW	2024	DC14-WD00025	Boswick Growth Area - Southdale (Boswick to Wonderland)	Water	\$769,703	100%	\$769,703
TOTAL BOSWICK PROJECTS							
					\$13,736,382		\$13,736,382
NEW	2025	DC14-WW00010	SS15B - North Talbot Growth Area Greenway PCP sewershed	Sanitary	\$2,981,017	100%	\$2,981,017
NEW	2030	DC14-MS00021	North Lambeth P5	SWM	\$1,983,694	100%	\$1,983,694
Lambeth							
NEW	2025	DC14-WW00010	SS15B - North Talbot Growth Area Greenway PCP sewershed	Sanitary	\$2,981,017	100%	\$2,981,017
NEW	2030	DC14-MS00021	North Lambeth P5	SWM	\$1,983,694	100%	\$1,983,694
TOTAL LAMBETH PROJECTS							
					\$4,964,712		\$4,964,712
Longwoods							
10+	2020	DC14-RS00022	22a: Bradley Avenue Extension-Phase 1 - Jalna to Whamcliffe (4 through lanes)	Road	\$11,776,250	100%	\$11,776,250
10+	2022	DC14-MS00031	Pincombe Drain SWMF 5	SWM	\$1,731,000	100%	\$1,731,000
10+	2016	DC14-MS00040	White Oaks SWMF 4 - Phase 1	SWM	\$6,198,000	100%	\$6,198,000
NEW	2029	DC14-MS00020	North Lambeth P4 (Dingman Tributary D3)	SWM	\$2,613,256	100%	\$2,613,256
NEW	2024	DC14-WD00010	Lambeth (A21) Growth Area - Wonderland (Dingman to Exeter)	Water	\$1,556,600	95%	\$1,478,770
NEW	2028	DC14-WD00009	Longwoods (A20) Growth Area - Dingman (Wonderland to White Oak)	Water	\$2,661,831	100%	\$2,661,831
TOTAL LONGWOODS PROJECTS							
					\$26,536,937		\$26,459,107
10+	2030	DC14-WW00011	SS14B - Boswick W Growth Area Greenway PCP sewershed	Sanitary	\$13,763,611	100%	\$13,763,611
NEW	2020	DC14-MS00024	North Lambeth P8	SWM	\$3,691,206	100%	\$3,691,206
NEW	2022	DC14-MS00023	North Lambeth P7	SWM	\$3,605,565	100%	\$3,605,565
TOTAL TALBOT PROJECTS							
					\$21,060,382		\$21,060,382
TOTAL SOUTHWEST PROJECTS							
					\$66,298,412		\$66,220,582
TOTAL 5+ YEAR PROJECTS (2020 and Beyond)							\$101,461,118
							\$99,382,868
							\$2,078,249

Note: Timing refers to the year of construction. Project is subject to inclusion in and the passing of the 2014 Development Charges Background Study.