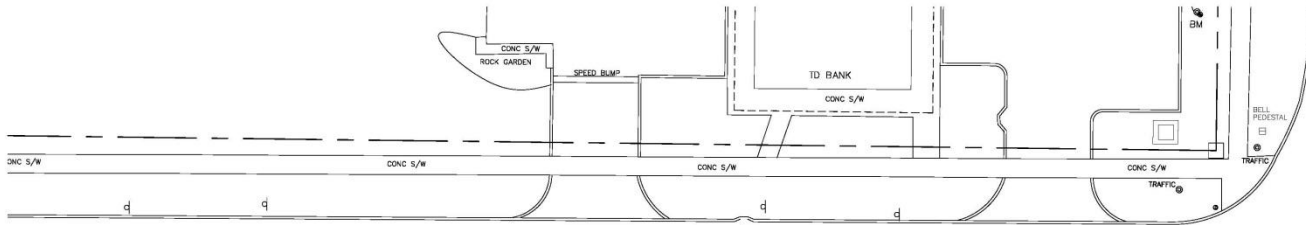


Richmond Medical Inc.
Dr. R. Lubell and Dr. P. Debellis

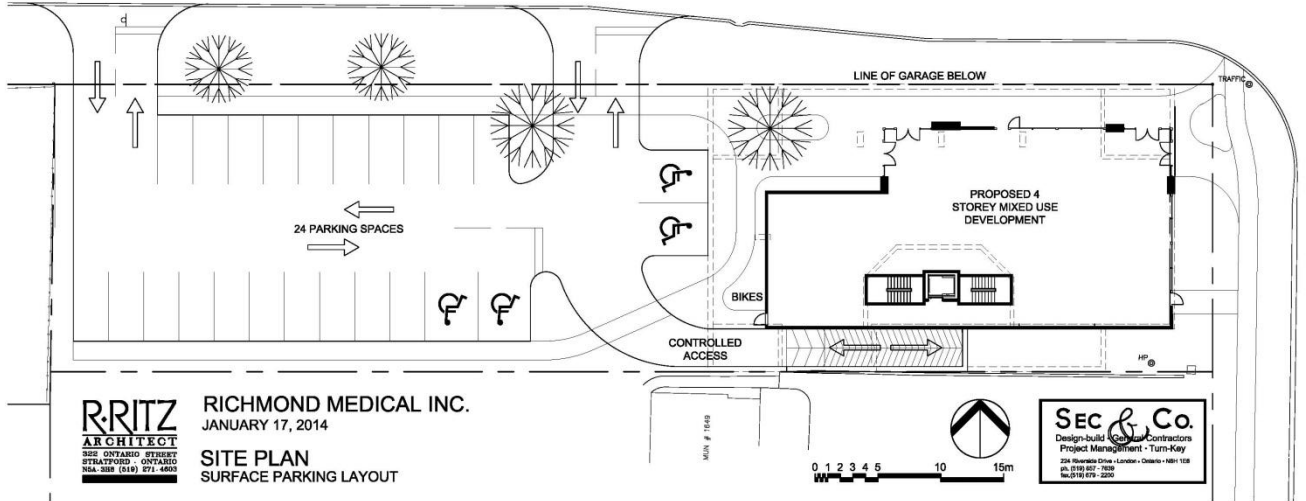
PEC Meeting January 21, 2014

1653 Richmond Street

London, Ontario



Hillview



Richmond

R RITZ ARCHITECT
 502 ONTARIO STREET
 STRATFORD - ONTARIO
 N6A-3B8 (519) 871-6803

RICHMOND MEDICAL INC.
 JANUARY 17, 2014
SITE PLAN
SURFACE PARKING LAYOUT

SEC & Co.
 Design-build General Contractors
 Project Management - Turn-Key
 234 Woodbine Circle - London - Ontario N6E 1Z8
 519-857-7888
 519-857-2200

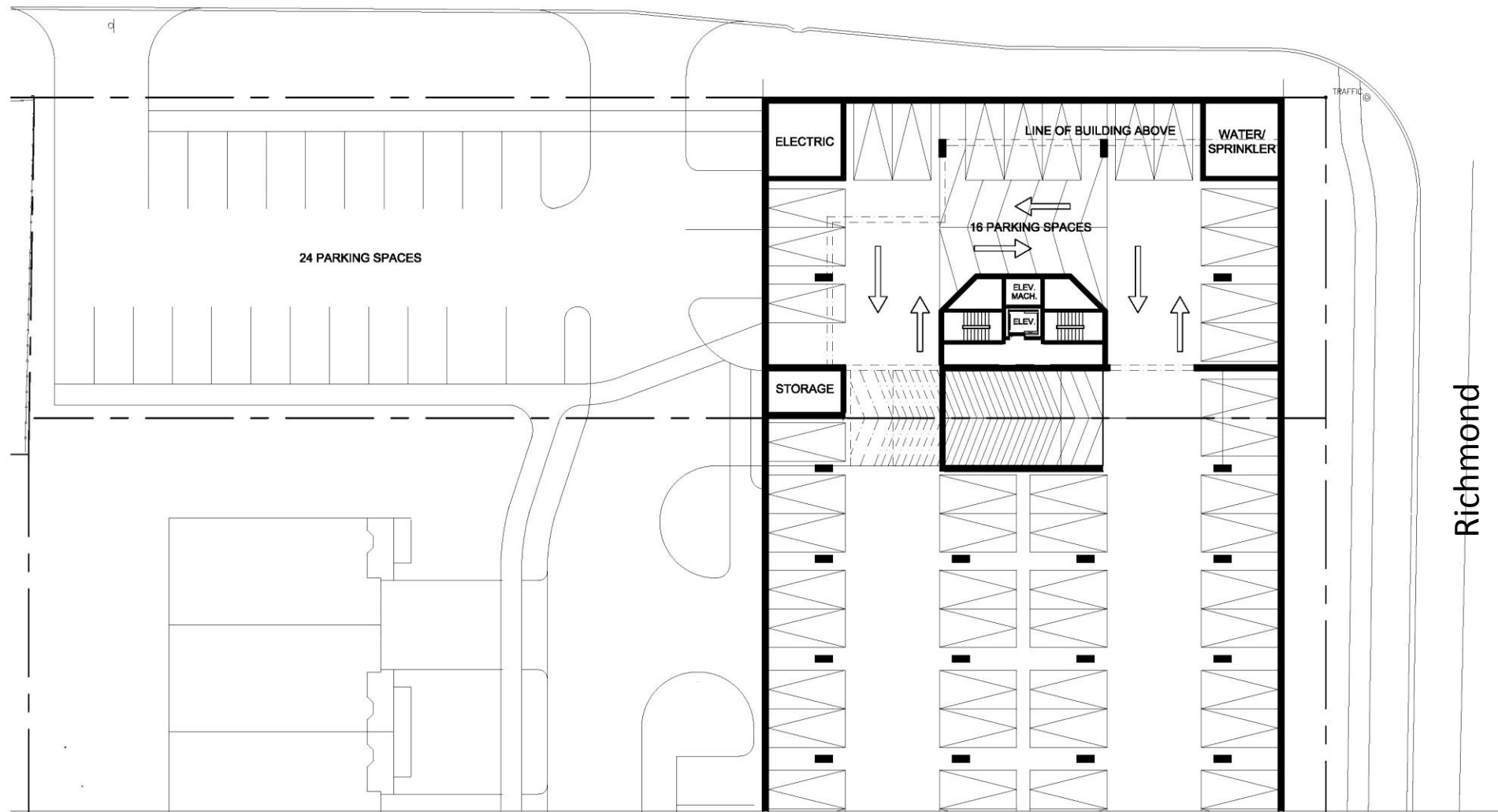


R RITZ ARCHITECT
 502 ONTARIO STREET
 STRATFORD - ONTARIO
 N6A-3B8 (519) 871-6803

RICHMOND MEDICAL INC.
 JANUARY 17, 2014
BUILDING RENDERING
 RICHMOND STREET

SEC & Co.
 Design-build General Contractors
 Project Management - Turn-Key
 234 Woodbine Circle - London - Ontario N6E 1Z8
 519-857-7888
 519-857-2200

Hillview



24 PARKING SPACES

ELECTRIC

LINE OF BUILDING ABOVE

WATER/
SPRINKLER

16 PARKING SPACES

STORAGE

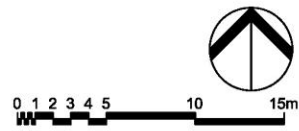
ELEV.
MACH.

ELEV.

Richmond

R. RITZ
ARCHITECT
322 ONTARIO STREET
STRATFORD ONTARIO
N5A 3H8 (519) 271 4803

RICHMOND MEDICAL INC.
JANUARY 17, 2014
SITE PLAN
U/G PARKING LAYOUT



SEC & Co.
Design-build General Contractors
Project Management • Turn-Key
224 Riverside Drive • London • Ontario • N6H 1E8
ph. (519) 857-7838
fax. (519) 878-2200

Request to PEC

Add these notions to the OPA:

- to permit greater flexibility on land use at the corner of Hillview and Richmond – specifically, medical dental office, and;
- to permit development on parcels of land of less than 70 m of lot frontage provided it can demonstrate how the adjacent lands can develop in conformity with the Master Plan.