



London  
CANADA

# **ANIMAL WELFARE SERVICES RFP 12-28**

# Reporting History

- Expanding the Scope of Animal Welfare Initiatives -Public Safety Committee , January 24, 2012
- Next Steps - Addressing Public Comments and Direction, Community & Neighbourhoods Committee (CNC), October 18, 2011,
- Status – Addressing Public Comments and Direction –(CNC), September 27, 2011,
- Public Participation Meeting on Expanding the Scope of Animal Welfare Initiatives, (CNC), July 19, 2011,
- Expanding the Scope of Animal Welfare Initiatives, (CNC), June 14, 2011,
- Updates on Requests, New Initiatives and Priorities for Animal Care, Control & Welfare (ETC) Meeting, February 8, 2010,



London  
CANADA

# Scope of Work

- Education/Awareness Services for Responsible Pet Ownership;
- Coordination of Community-based Animal Welfare Initiatives
- Fostering & Adoption Facility / Program for Stray Cats / Dogs;
- Pet Identification (Licensing) System;
- Animal Services Community Patrol;
- By-law Enforcement
- Dog Bite Investigations
- Shelter Facility for Stray and Impounded Animals
- Provide Lost and Found Services
- Pick up Service for Sick or Injured Wildlife
- Provide Quarantine Kennelling Services



London  
CANADA

## Evaluation Team

- Executive Director Ottawa Humane Society
- Director of Animal Care and Veterinary Services and Assistant Professor Pathology, University of Western Ontario
- Director of Blue Cross Animal Hospital, Kitchener Ontario



London  
CANADA

# ANIMAL WELFARE SERVICES

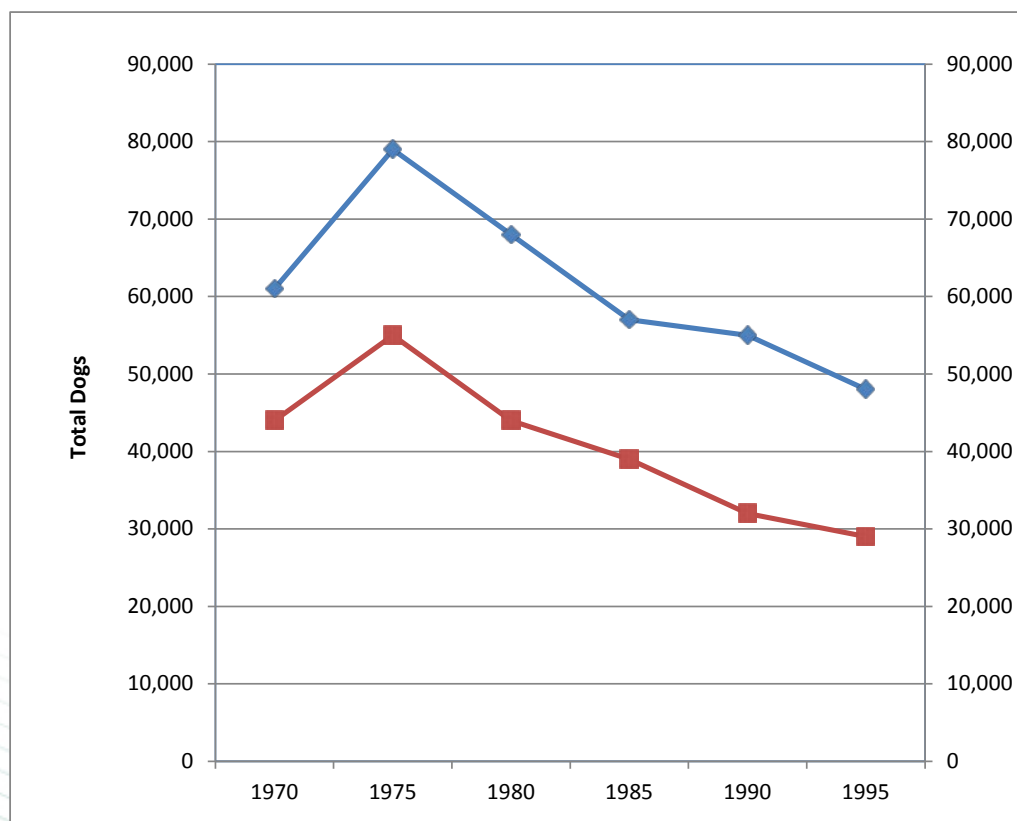
The evaluation team unanimously recommends UAM Inc. as the service provider to implement a scope of animal welfare initiatives which are fiscally responsible on behalf of London's taxpayers.

## Best Practices

No one perfect  
program but many  
elements of success



# Shelter Statistics

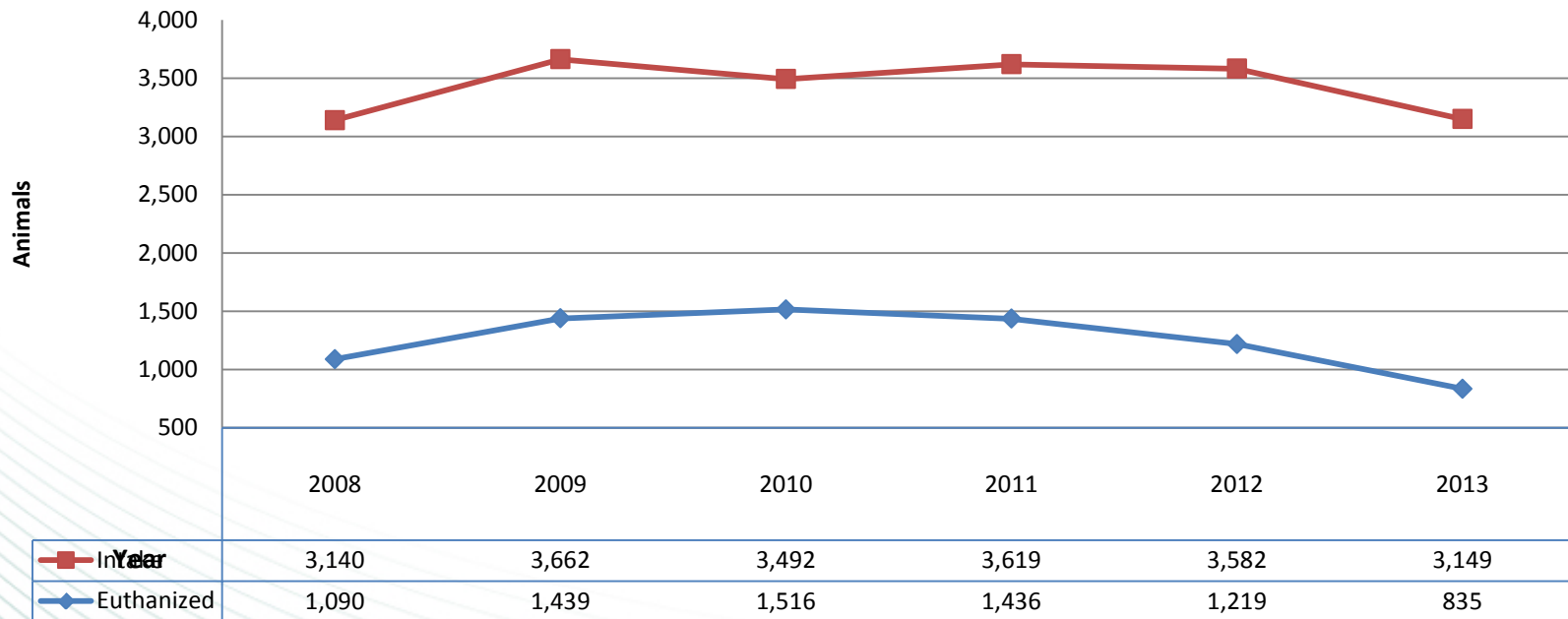


Correlation Between Intake & Euthanasia = .981

■ Intake rate

■ Euthanasia rate

# City of London – Shelter Statistics





# Metrics

- Shelter intake
- Euthanasia
- Live release rate
- Monthly stats – City web



# 1. Pet Limits

- Amend by-law – max 6
- Grandfather clause
- New citizen clause
- PPM 2014



## 2. Keeping of Newborns

- Amend by-law – 6 month exemption
- Socializing and placement
- Spay/neuter kittens prior to placement.
- PPM 2014



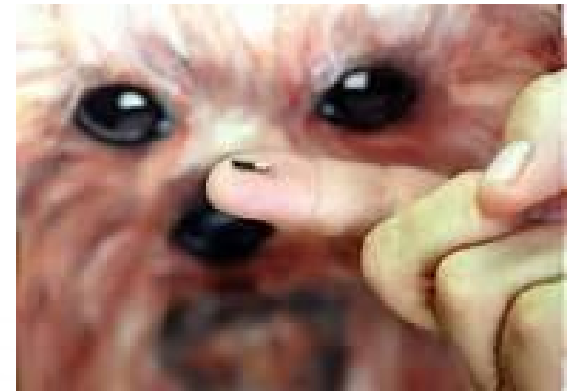
## 3. Fostering

- New animal fostering by-law
- Ten animal max
- PPM 2014



## 4. Microchipping

- Increase the rate of return - cats
- Lower pound intake
- Proven pet identification
- Component of enhanced veterinarian services.



## 5. Off-leash dog parks

- City planning process
- Pocket parks
- Reserve fund



## 6. Feral Cat Program

- Humanely reduce the number of roaming cats
- Reduce pound intake of healthy feral cats
- Component of enhanced veterinarian services model



## 7. Rewards Program

- Proven participation
- Partnership potential





## 8. Barn Cat Program

- Lifesaving measure to find homes for feral & unsocial cats entering pound
- Cats are spay, neutered, and vaccinated prior to placement
- Can provide rodent control





London  
CANADA

## 9. Enhanced Veterinarian Services

- Triage - lifesaving measures to make more pets entering pound adoptable
- Feral cat spay/neuter clinic to be able to increase pound capacity - reduce euthanasia
- Microchipping
- \$300k start up; \$125k operating funding





London  
CANADA

## 10. Adoption Centre Partnership

- More pets becoming adoptable equals reduced euthanasia
- Focus on cats initially
- Spay/neuter, fully vaccinated, full check-up and microchipped prior to transfer
- \$400k one-time start-up ; \$200k operating

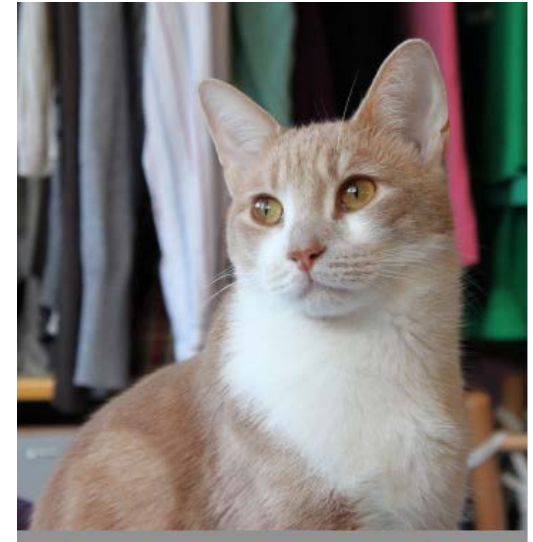




London  
CANADA

# Low Income Spay Neuter Subsidy - Ongoing

- Lifesaving measure to help reduce unwanted births.
- Reduce unwanted behaviors leading to abandonment or surrender
- Reduces the number of pets entering pound.



# Joint Venture Partnership

- Municipal shelter and adoption facility.
- Modern state of the art facility, with focus on advanced care
- Potential for joint venture



# Shelter flow through

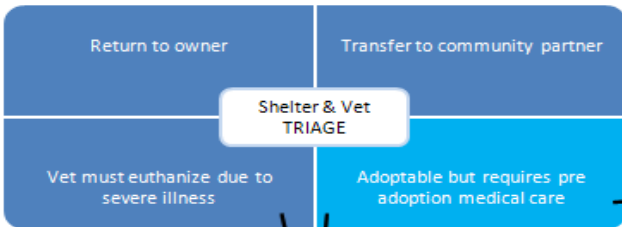
Shelter Operations

Community Patrol

Pet  
Identification/Licensing

Education/Awareness  
& Adoptions

By-law Enforcement



NEW HOME

**VET**

Shelter  
Medicine

Micro Chip  
with  
Licence

Aggressive  
TNR

Aggressive  
Spay/Neuter

Shelter  
Medicine

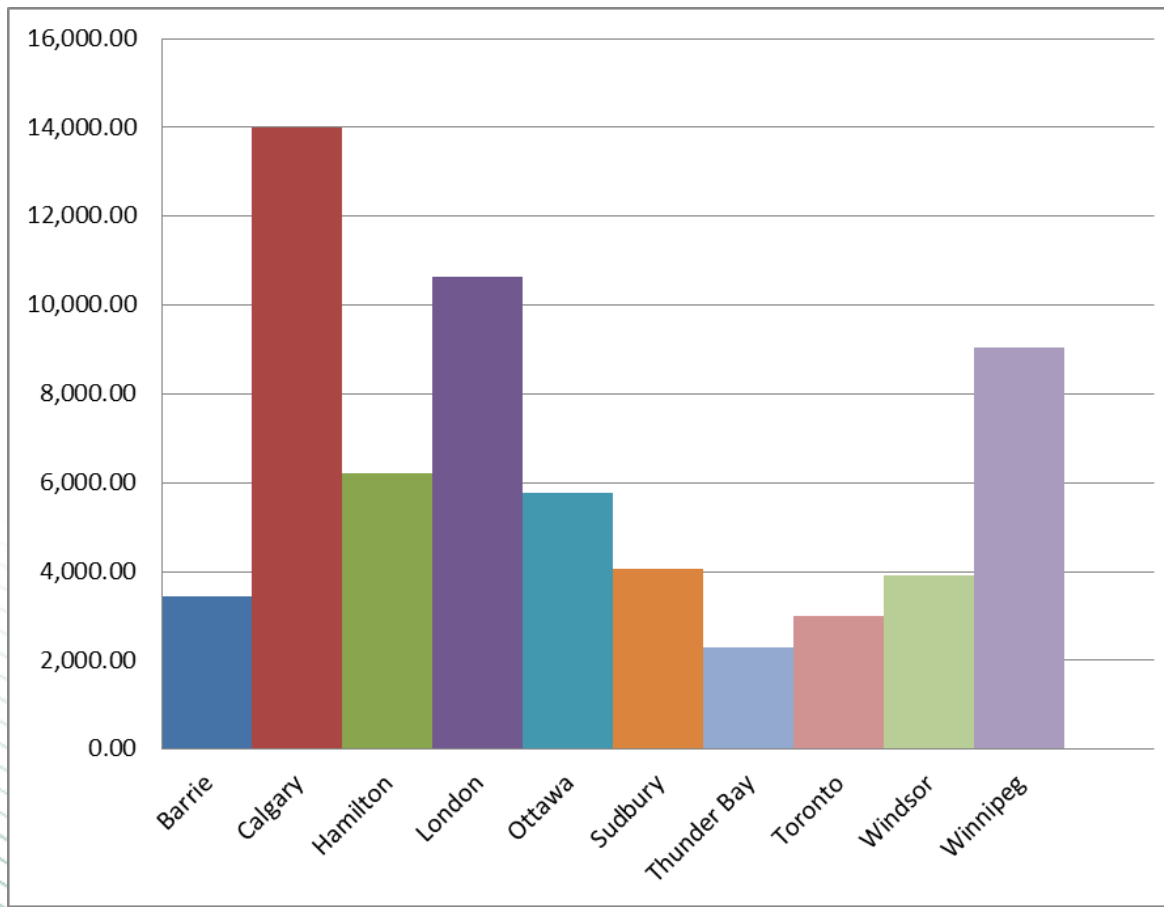
Community  
Partners

NO MORE  
HOMELESS  
PETS

Aggressive Spay/Neuter will reduce the intake of animals entering the shelter and therefore will result in a reduction of euthanized animals

# Licensing Revenue - OMBI

(per 100,000 population)



## Financial Information

- Core Services – \$ 2.1M
- Enhanced Vet Care Service Model -  
\$125k operating – \$300k one time  
capital
- Cat adoption Centre - \$200k operating –  
\$400 one time capital



## Phasing of Enhanced Services

- Priority Enhancement – City Vet Services
- Funding - HST Rebate \$244 K, vehicles savings \$23K

## The Vision

London, a city where  
all pets have a  
caring, respectful and  
responsible home.

