

CITY OF LONDON WOODLAND MANAGEMENT PROJECT

 B.A. Blackwell & Associates Ltd.

Date & Time: Thu Nov 7 09:33:22 EST 2013
Position: +043.05425° / -081.25600°
Altitude: 981 ft
Azimuth/Bearing: 260° S80W 14622mils (True)
Elevation Angle: -83.5°
Horizon Angle: -87.8°
Zoom: 1X



Mark Brown RPF
B A Blackwell & Associates

Presentation Outline

B.A. Blackwell & Associates Ltd.



- Scope of the Project
- Mapping Ecosystem Values
- Successional Trajectory
- Stakeholder Consultation
- Developing Management Regimes
- Permanent Sample Plots & Long-term Monitoring

Scope of Project

B.A. Blackwell & Associates Ltd.

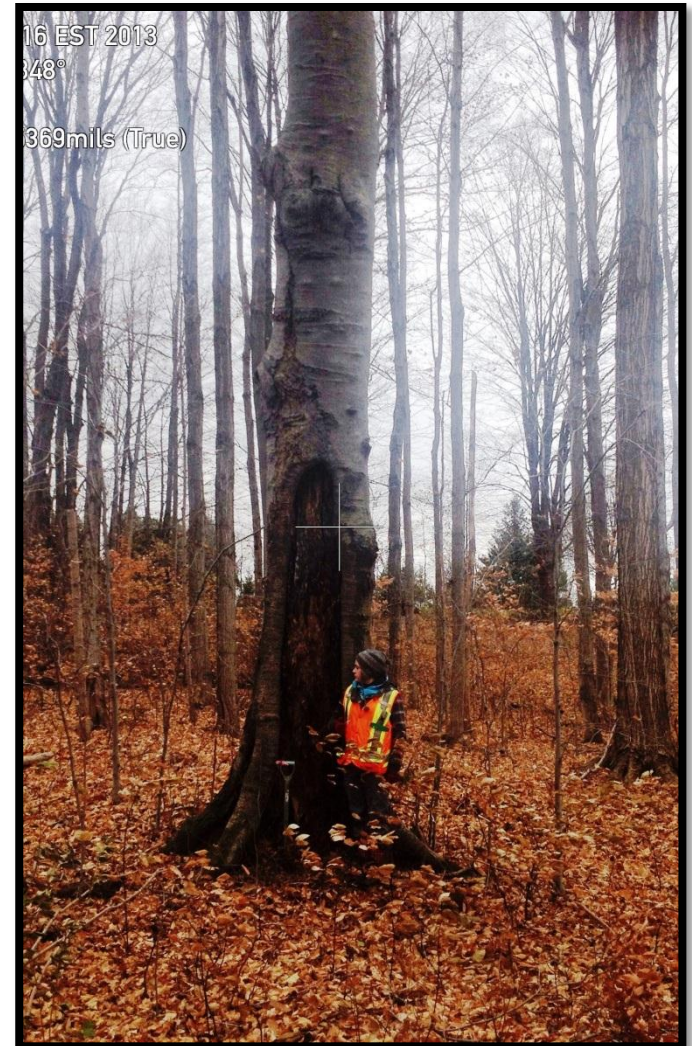
- ❑ Detailed forest inventory of 15 park woodlands
- ❑ Species composition, Age
- ❑ Structural stage, diversity
- ❑ Forest Health factors
- ❑ Endangered species and SAR
- ❑ Wildlife habitat values
- ❑ Size, location, isolation, fragmentation
- ❑ Opportunities and constraints



Ecosystem Values

B.A. Blackwell & Associates Ltd.

- Natural/anthropogenic disturbance
- Native, introduced, exotic species
- Endangered species, SAR
- Wildlife habitat values
- Natural carrying capacity
- Site productivity
- Reference sites



Successional Trajectory

B.A. Blackwell & Associates Ltd.

Date & Time: Thu Nov 7 09:37:20 EST 2013
Position: +043.05385° // -081.25548°
Altitude: 965ft
Azimuth/Bearing: 005° N05E 0089mils (True)
Elevation Angle: -05.7°
Horizon Angle: +01.0°
Zoom: 1X



- Historical management regime
- Where are the forests on natural successional trajectory ?
- How pristine or degraded are they ?
- How easy/costly to restore ?
- Actual and anticipated conflicts ?

Stakeholder Consultation

B.A. Blackwell & Associates Ltd.



- City staff interviews
- Stakeholder consultation
- Identify opportunities and constraints to management
- The need for management for multiple objectives
- New park woodland acquisition

Developing Forest Management Regimes and Models

B.A. Blackwell & Associates Ltd.

- ❑ Literature review
- ❑ Comparison with other jurisdictions
- ❑ Optimization of values
- ❑ Carbon sequestration/sinks
- ❑ Forest canopy
- ❑ Adaptation to climate change
- ❑ Forest canopy loss & afforestation opportunities



Permanent Sample Plots & Long-Term Monitoring

B.A. Blackwell & Associates Ltd.

Date & Time: Sun Nov 17 10:32:51 EST 2013

Position: +043.05357° / -081.25578°

Altitude: 883ft

Azimuth/Bearing: 178° S02E 3164mils (True)

Elevation Angle: -05.3°

Horizon Angle: +02.4°

Zoom: 1X



- GPS location, Tag, photos, N,E,S,W
- Tree DBH, Height, Species composition, Vegetation layers, Wildlife, SAR
- Soil, CWD, Forest Health & Disturbance Factors, IAP



B.A. Blackwell & Associates Ltd.

Mark Brown RPF CTRA
B. A. Blackwell & Associates
Ontario Office
Cell: 604 961 9262
Email: treewizard@shaw.ca



THANK YOU !

QUESTIONS & DISCUSSION