



New Centertown Apartments in Old East Village

CITY OF LONDON

# Reporting on Progress

Background Document for the Community Energy Action Plan

December 2013



# TABLE of CONTENTS

- 1. Community Energy Action Plan - Background..... 1
  - 1.1 What is Rethink Energy London? ..... **Error! Bookmark not defined.**
  - 1.2 What is the Community Energy Action Plan? ..... **Error! Bookmark not defined.**
- 2 Reporting on Progress – The Purpose ..... 1
- 3 Annual Community Energy & Greenhouse Gas Inventory Reports ..... 5
- 4 New Progress Indicators ..... 5
  - 4.1 Open Source Data Solutions ..... 6
- 5 Reporting on City of London Community Energy Actions ..... 6
- 6 Recognizing Progress Made by Londoners and London's Employers..... 8

## 1. COMMUNITY ENERGY ACTION PLAN - BACKGROUND

The Corporation of the City of London does not have a lot of direct control over how much energy is used in London, but it does have a lot of influence. The control over energy use in London rests primarily with our citizens, visitors, employers and employees. Individual and collective action with respect of sustainable energy use, energy management, and energy conservation is the key to our future.

Urban planning can have a significant impact on how much energy we use. Designing new communities with a mix of land uses and density reduces the need to drive all the time, and can allow for innovative energy-saving technologies that take advantage of the different heating and cooling needs of these buildings. Infill development projects, particularly in older, car-dependent suburban neighbourhoods, can help “retrofit” these neighbourhoods to have these same benefits. The City’s [Rethink London](#) campaign is being used to help get Londoners’ thoughts on how we can do a better job through urban planning.

Transportation planning is also highly dependent upon urban planning. Today in London, the main transportation mode used by residents is the private automobile, which accounts for almost 75 percent of travel during rush hour. Public transit carries about 12 percent, and active transportation (walking and cycling) represent a further nine percent. The City’s [Smart Moves 2030 Transportation Master Plan](#) analyzed various growth scenarios in order to determine what needs to be done from both land use and transportation perspectives to provide more travel choices for those who live, work and play in London.

The Corporation of the City of London is also one of London’s largest employers, operating over 200 facilities and over 300 vehicles involved in delivering a wide range of services to London. The City of London is expected to lead-by-example, and the City’s new [Corporate Energy Management Plan](#), currently under development, will outline this plan.

Finally, one of the most critical roles that the City plays is to “connect the dots” between all of the major community stakeholders, the activities they engage in, and the role that these stakeholders can play in our rolling out the Community Energy Action Plan.

### 1.1 WHAT IS RETHINK ENERGY LONDON?

Rethink Energy London was a community engagement and action plan that has been running since January 2010. Its purpose was to increase public awareness, encourage stakeholder action, and seek input on sustainable energy and greenhouse gas (GHG) emission mitigation actions that also creates local social and economic benefits. Rethink Energy London covered a broad range of topics under four main themes – Our Homes, Our Neighbourhoods, Our Transportation, and Our Economy. Over the last two years, City staff

has met with stakeholders by attending their meetings and events, and by hosting workshops, seminars and conferences. Rethink Energy London has been promoted at numerous public and community events, such as the London Home Show and Car Free Day. To reach larger audiences, City staff made use of relationships with local media, including regular appearances on Rogers Daytime's Green Segment.

City staff have made presentations about Rethink Energy London at 15 stakeholder meetings (between 10 -200 people each) and has had Rethink Energy London materials on display at more than 20 public events (between 30 – 10,000 people each).

Rethink Energy London was supported by and/or connected to a number of key activities:

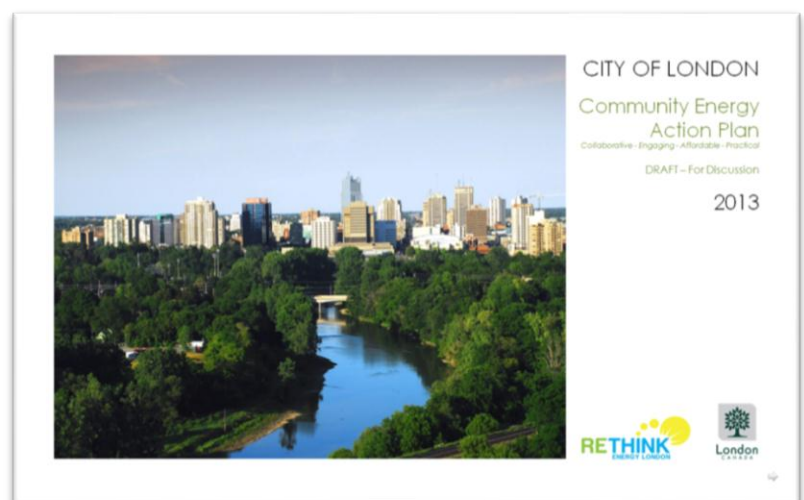
- Smart Moves 2030 Transportation Master Plan
- London Strengthening Neighbourhoods Strategy
- London's Roundtable on the Environment and the Economy
- Integrated Energy Mapping for Ontario Communities
- Rethink London
- The City of London's Corporate Energy Management Plan

## 1.2 WHAT IS THE COMMUNITY ENERGY ACTION PLAN?

London's Community Energy Action Plan builds upon what City staff learned through Rethink Energy London, and sets out an action plan with the following key principles:

1. This needs to be the community's plan for London, not the City of London's plan for the community.
2. We can't control the price of energy, but we can control the cost of energy.
3. Start first with conservation.
4. Get the size right.
5. Invest in energy efficiency and good design.
6. Make use of free heat and free light.
7. Reduce waste.
8. Make it local.
9. Build on local strengths.
10. Use renewable energy.
11. Measure your progress.
12. Share your stories.

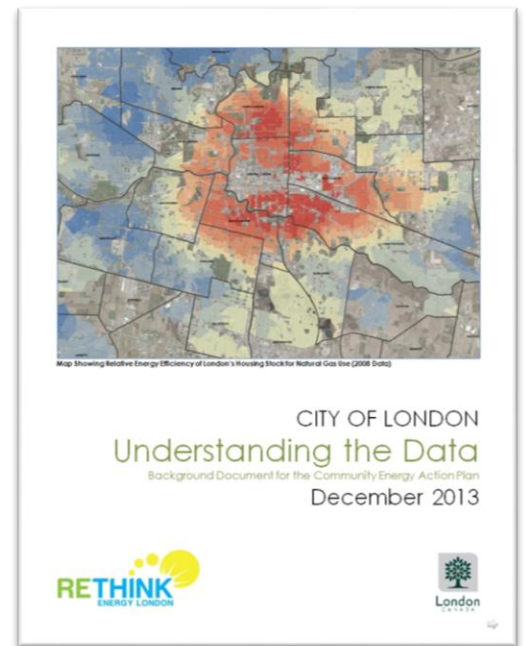
London's Community Energy Action Plan will be a "living document", in that the actions taken by the City of London and community stakeholders are expected to grow and change over time. In fact, we have chosen to deliberately leave sections of the draft action plan blank to remind



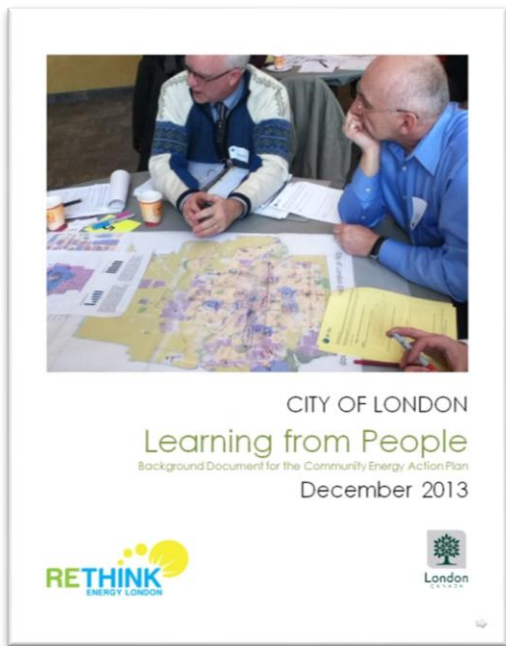


Londoners that we need to hear about what actions they are taking. We need to hear about your activities to complete this plan. In order to keep the Community Energy Action Plan focussed on “just the actions”, we have placed all of the plan’s supporting information within the following documents:

**Understanding the Data** summarizes what City staff knows to date about “big picture” issues like climate change and global energy supply, as well as local information on how much energy we use, what we use it for, how much it costs to use it, and how much



greenhouse gas emissions it creates. This document also talks about some of the information City staff has about the options we have in London to reduce energy use, reduce energy costs, reduce greenhouse gas emissions, and create jobs in the process.

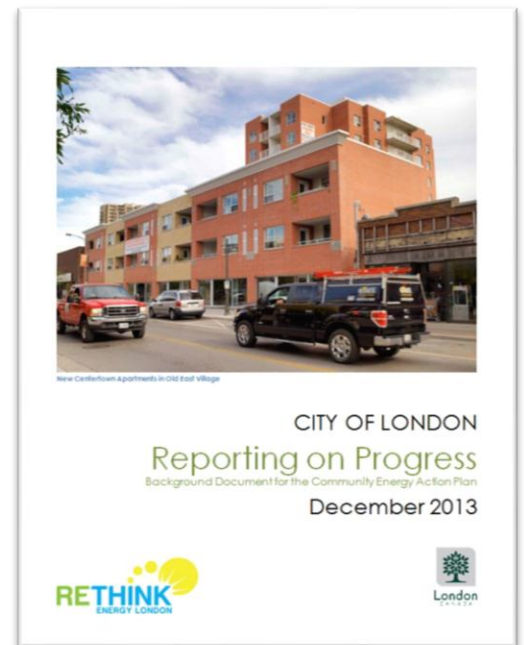


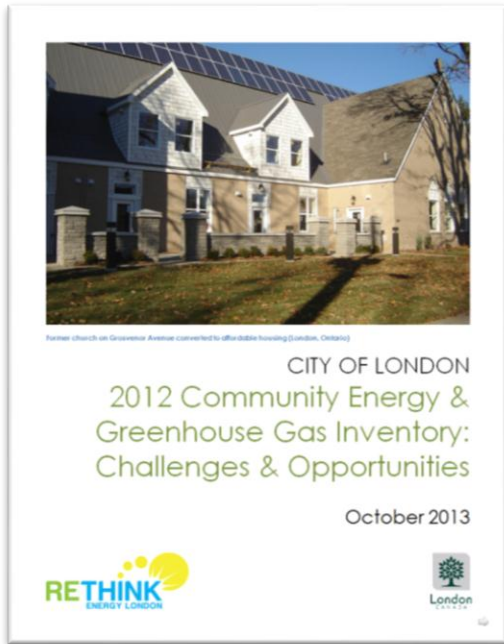
**Learning from People** summarizes what City staff learned through public engagement activities undertaken through Rethink Energy London, including London’s Roundtable on the Environment and the Economy and the Community Energy Stakeholder Workshop, as well as community-led

engagement activities.

**Reporting on Progress** outlines how Council and Londoners will be kept informed on progress made on the Community Energy Action Plan. This includes:

- annual *Community Energy & Greenhouse Gas Inventory Reports*
- Developing new progress indicators
- Open Source data solutions
- Reporting on progress for City of London community energy actions, and
- Recognizing progress made by Londoners





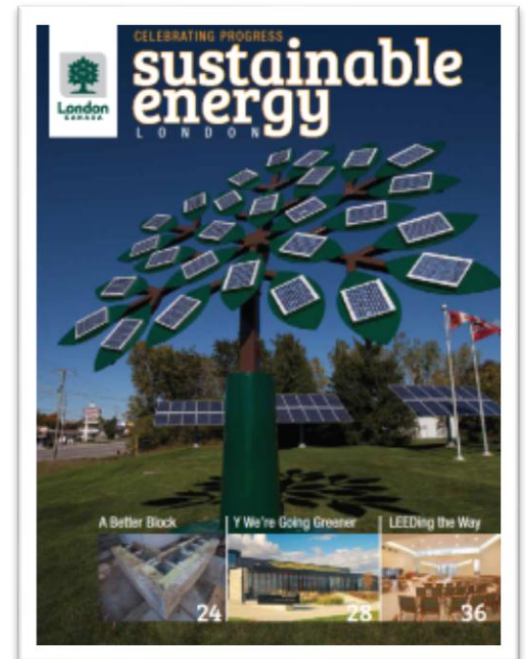
[2012 Community Energy & Greenhouse Gas Inventory: Challenges & Opportunities](#) provides an overview of London's 2012 annual energy consumption and greenhouse gas (GHG) emissions. This includes information on what energy commodities are used, which sector they are used in, and the estimated cost for using these commodities.

[Celebrating Progress - Sustainable Energy London 2013](#) (and three minute [video](#)) is a publication that draws attention to energy conservation, energy efficiency, and renewable energy projects undertaken by London's energy stakeholders in recent years.

The publication illustrates the depth of projects and programs and serves as a showcase of the 'possible'. It can also be viewed as promotional piece for London's future in sustainable energy projects.

Many of the projects highlight what Londoners and London business have done to both reduce energy expenditures and/or localize the expenditures. These projects include examples of:

1. Harnessing the sun
2. Tapping into the Earth's energy
3. Capturing the wind
4. Changing the way we move
5. Using less energy
6. Leading the way



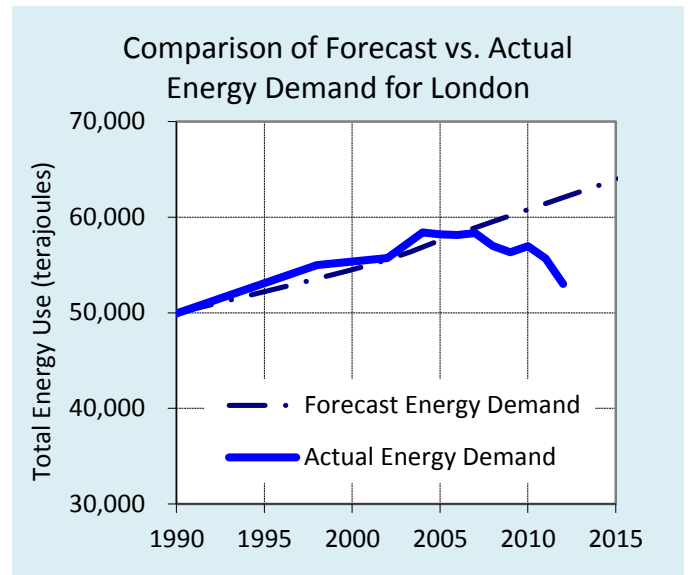
## 2 REPORTING ON PROGRESS – THE PURPOSE

The purpose of this Reporting on Progress document is to outline how City staff will keep Council and Londoners informed on the progress being made on London's Community Energy Action Plan.

## 3 ANNUAL COMMUNITY ENERGY & GREENHOUSE GAS INVENTORY REPORTS

The City of London has an established methodology for tracking and reporting on energy use in London, and the associated greenhouse gas emissions. This includes information on what energy commodities are used, which sector they are used in, and the estimated cost for using these commodities.

As part of the Community Energy Action Plan, the City of London will commit to publishing these inventory reports on an annual basis. The target date for the release of these inventory reports will be on or close to Earth Day (April 22<sup>nd</sup>) every year.



## 4 NEW PROGRESS INDICATORS

The City of London is fortunate to have a lot of information on hand to help guide our Community Energy Action Plan. However, the City of London will work with key stakeholders to develop and use new indicators:

- **Economic-related indicators** – information on energy use can be matched up with economic indicators such as gross domestic product and local employment. However, this information is currently only available for the greater London region (i.e., the London Census Metropolitan Area), which can be prorated by London's population share within this greater region. This is not the best way to assess accurately what is happening here in London, but it is a starting point.

Information on energy use trends, such as reductions in energy commodity use per person, can be used to estimate the economic benefit of avoided energy costs for London.

- **Transportation indicators** – We don't really know how much fuel Londoners use. We do know how much fuel is sold in London, but this also includes people from out of town filling up here, and also does not cover off the fuel Londoners use when filling up out of town. We also can't tell whether Londoners in the suburbs actually use more fuel than Londoners living near downtown.

However, we can get information from companies such as Polk Canada and Environics Analytics, on vehicle ownership in London such as the number of vehicles owned, the size of vehicles, and

the powertrain used in vehicles (e.g., gasoline, diesel, hybrid, electric)

- **Benchmarking indicators** – Tools such as energy mapping can help to illustrate where there are opportunities to focus building retrofit activities. City of London staff work with our energy utilities to create and update these maps on an annual basis so that we can see what parts of London are making progress on improving energy efficiency. This same data can also be used to determine useful energy efficiency benchmarks, such as energy used per square meter floor area for different types of buildings – single family housing, apartment buildings, office buildings - here in London.

#### **4.1 OPEN SOURCE DATA SOLUTIONS**

The City of London has lots of good information, but we need to figure out better ways to let people know that we have it, and make it available in a format that is quick and easy to understand. With “Open Data”, we can share our information with fellow data nerds who may have better ways to present this information.

### **5 REPORTING ON CITY OF LONDON COMMUNITY ENERGY ACTIONS**

As part of the Community Energy Action Plan, the City of London will commit to publishing progress reports on its Community Energy Action Plan activities on an annual basis. The target date for the release of these progress reports will be on or close to Earth Day (April 22<sup>nd</sup>) every year.

The Community Energy Action Plan will be a “living document”, with the ability to adapt to changing situations. New actions that arise from new opportunities will be added to the plan within these progress reports

The following table illustrates the draft template that will be used for these progress reports.



## POLICY SUPPORT FOR COMMUNITY ENERGY ACTION PLANNING

### Goals

Establish new, easy to implement policy tools and programs for encouraging energy efficiency and renewable energy, in coordination with existing tools and programs (including those from utilities) by 2014.

### Actions & Strategies

### Progress

### Details

0%	25%	50%	75%	100%
----	-----	-----	-----	------

### Highest Priority Actions for the City of London in 2014

1. Incorporate the defining principles of London's Community Energy Action Plan in to the Official Plan Review.

2. Incorporate in to the Official Plan Review means to encourage new development to be "future-ready" through voluntary, low-cost design principles that can accommodate the future installation of electric vehicle charging systems (i.e., "EV-ready"), solar energy systems (i.e., "solar-ready") and district thermal energy loops (i.e., "DE-ready").

### Key Strategies for the City of London to 2018

1. Work with target neighbourhoods (e.g., Argyle, Old East, Old South, etc.) and energy utilities (London Hydro, Union Gas) to develop and test the use of Local Improvement Charges to offer low-interest financing carried through property tax for residential and commercial building energy and water retrofits.

### Proposed Progress Report Template

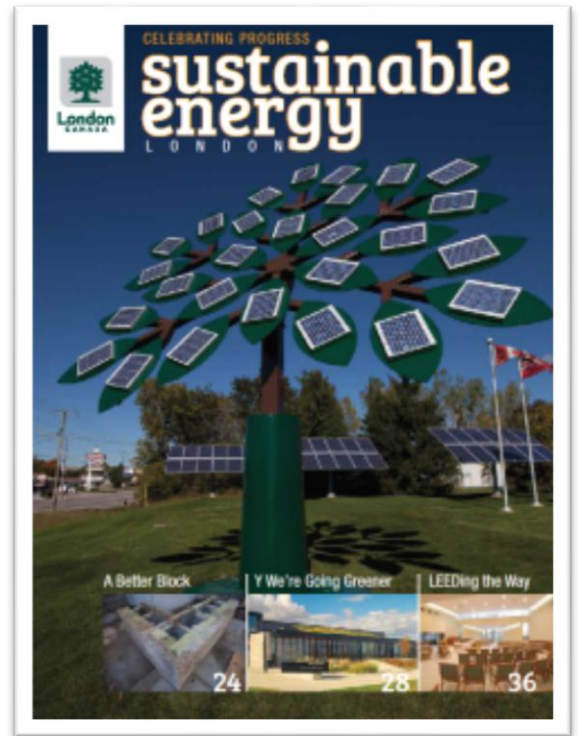
## 6 RECOGNIZING PROGRESS MADE BY LONDONERS AND LONDON'S EMPLOYERS

### [Celebrating Progress - Sustainable Energy London](#)

[2013](#) publication and video drew attention to energy conservation, energy efficiency, and renewable energy projects undertaken by London's energy stakeholders over the 2008-2012 periods.

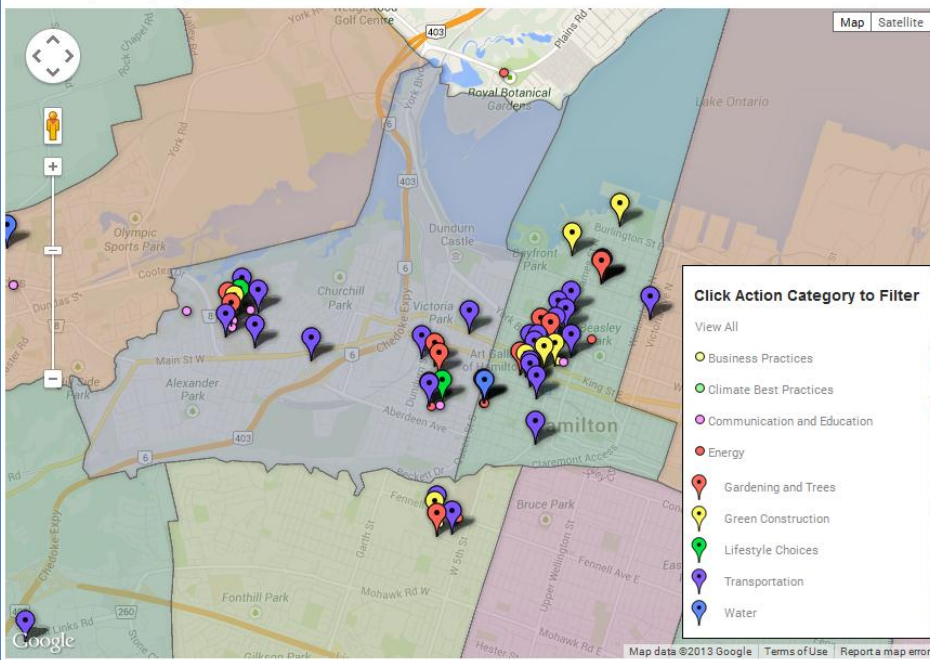
One option under consideration is to produce a similar publication on an annual or biennial basis. To support this, the City of London would require key energy stakeholders to share their stories on a regular basis.

Another option under consideration would be to create a web-based platform where the City of London, key energy stakeholders, community groups, and individual businesses and Londoners could share their stories. The City of Hamilton and McMaster University have recently launched a web-based tool, LEARN-CC (the Local Education and Action Resource Network on Climate Change), that provides an example of how this could be done.



### CLIMATE CHANGE ACTIONS MAP

Take a look at the actions people in your community are taking to address climate change. The coloured shapes represent Hamilton's wards and each category of action is represented by a different colour marker. Click around and explore! Consider submitting your own action by clicking "Report" above.



Climate Change Action Map from LEARN-CC in Hamilton