

From: J. K
Sent: Friday, November 8, 2024 2:20 PM
To: PEC <pec@london.ca>
Subject: [EXTERNAL] 3640 Dingman Drive

Dear Chair and Members of the Planning and Environment Committee,

I am writing to propose an addition to the planned sports park at 3640 Dingman Drive in London. Although I am unable to attend the meeting scheduled for Tuesday, November 12th at 1 pm, I wanted to share this suggestion with you.

There is a significant shortage of lit senior baseball parks in London (distinct from junior baseball parks and softball fields). Currently, there are only four lit senior fields in the city: Labatt Memorial Park, Dan Pulham Field, and the Upper and Lower fields at City Wide Sports Park. These facilities are fully booked from 5-11 pm, seven days a week, from May through August, primarily for London District Baseball Association (LDBA) youth activities. This has left the London Men's Baseball League (LMBL), with its 225 players, often scrambling for available fields, sometimes as far as St. Marys. Additionally, many competitive senior players (aged 22+) must travel to Strathroy, Petrolia, or Wyoming due to limited field availability in London.

I encourage the committee to consider the layout of Larry Pearson Park in Guelph, Ontario, located at 25 Poppy Dr. W. This park features three senior baseball diamonds, along with tennis and basketball courts, a large playground, a skatepark, and restrooms. These diamonds support multiple leagues, covering about 10.6 acres, or approximately 32% of the park's available space. I've attached an illustration that overlays the Guelph baseball fields onto the Dingman Drive site to provide a visual representation of what could be achieved with a similar configuration.

Constructing the proposed fields with artificial turf, similar to the Soccer/Football fields at City Wide Sports Park, could also ensure greater durability and extended playability.

Baseball has a long-standing tradition in our community, and this project presents a valuable opportunity to revitalize the sport, creating a lasting space for thousands of enthusiasts in our city.

Thank you for considering this suggestion, and I appreciate the opportunity to share my thoughts.

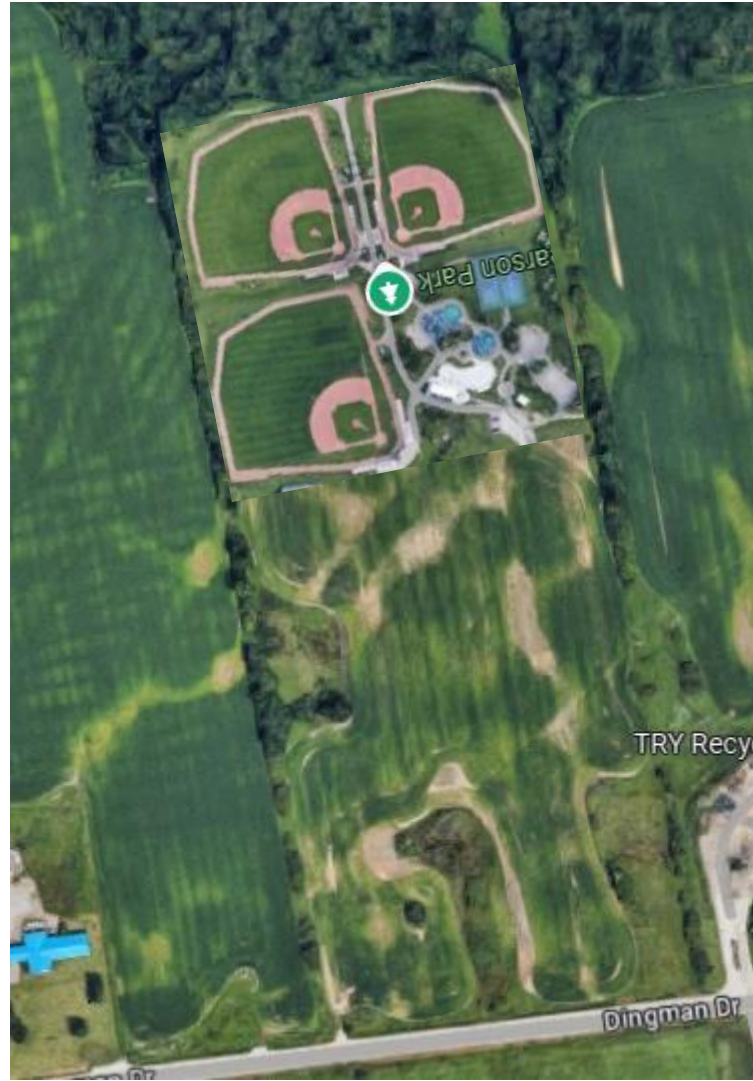
Best regards,

J. Kennedy

3640 Dingman Drive



Opportunity:



Larry Pearson Park 25 Poppy Dr W Guelph, ON N1L 1G1



Three (3) Senior Baseball Fields
90ft Base Paths
60'6" Pitchers Mound

Also includes:
2 Tennis Courts
Playground
Basketball courts
Skate park
Washrooms