

Bill No. 347  
2024

By-law No. S.- \_\_\_\_ - \_\_\_\_

A by-law to assume certain works and services  
in the City of London. (Hajjar Subdivision, Plan  
33M-732)

WHEREAS the Deputy City Manager, Environment and Infrastructure of  
The Corporation of the City of London has reported that works and services have been  
constructed to their satisfaction in Hajjar Subdivision, Plan 33M-732;

AND WHEREAS it is deemed expedient to assume the said works and  
services;

NOW THEREFORE the Municipal Council of The Corporation of the City  
of London enacts as follows:

1. The Corporation of the City of London assumes the following works and  
services, namely:

Hajjar Subdivision, Plan 33M-732  
Sifton Properties Limited

*Doyle Drive - All*

2. The warranty period for the works and services in the subdivision referred  
to in Section 1 of this by-law will commence for a duration of one calendar year from  
June 3, 2024.

3. This by-law comes into force and effect on the day it is passed subject to  
the provisions of PART VI.1 of the *Municipal Act, 2001*.

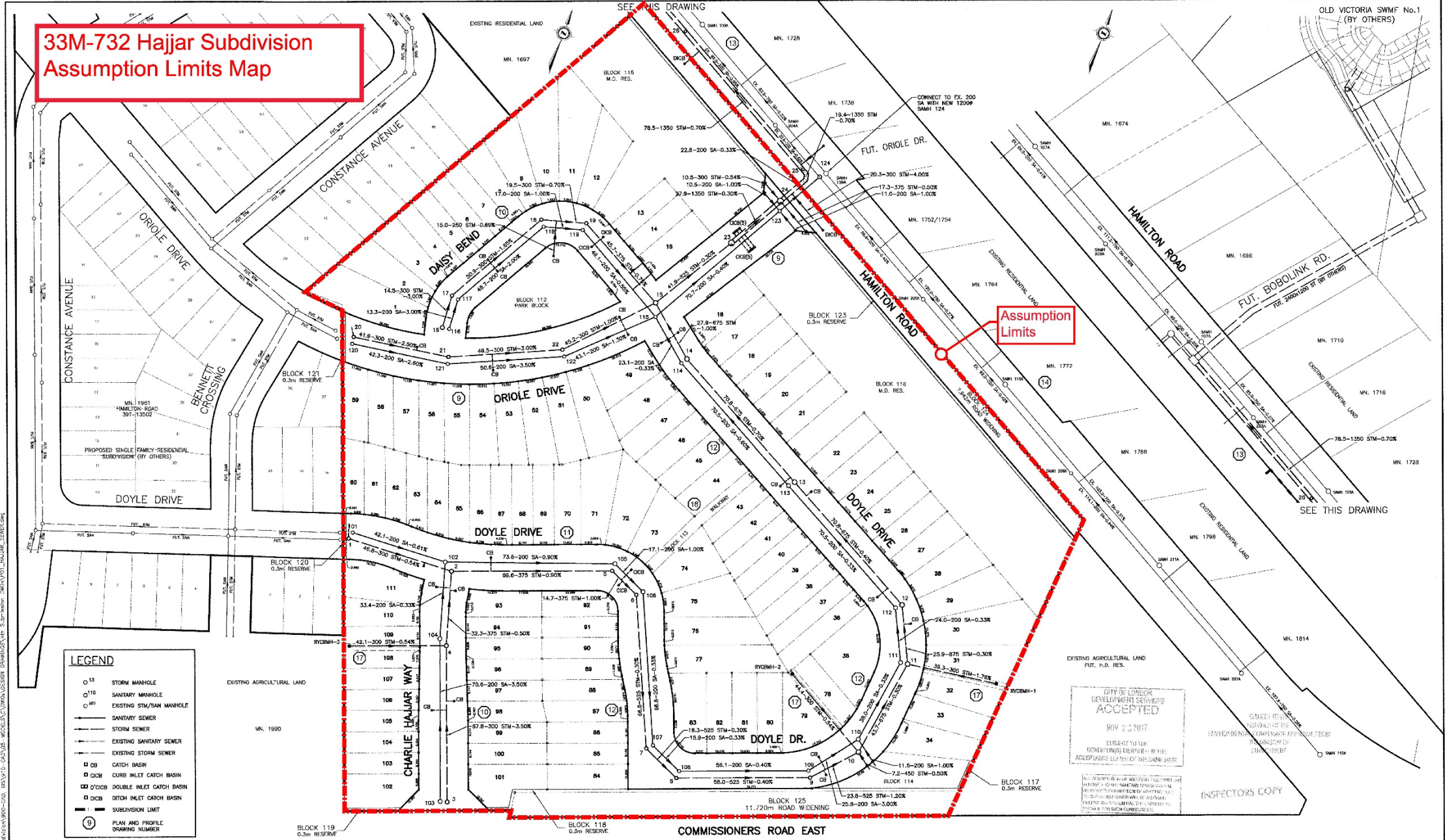
PASSED in Open Council on October 15, 2024 subject to the provisions of  
PART VI.1 of the *Municipal Act, 2001*.

Josh Morgan  
Mayor

Michael Schulthess  
City Clerk

First Reading – October 15, 2024  
Second Reading – October 15, 2024  
Third Reading – October 15, 2024

# 33M-732 Hajjar Subdivision Assumption Limits Map



CITY OF LONDON  
DEVELOPMENT SERVICES  
**ACCEPTED**  
NOV 23 2017  
SUBJECT TO THE  
CONDITIONS OF THE  
ACCEPTANCE LETTER OF THE CORPORATION

EXISTING SERVICES	DRAWING #, SOURCE	DATE	AS CONSTRUCTED SERVICES	COMPLETION

DETAILS	No.	REVISIONS	DATE	CONSULTANT
DESIGN	1	1st SUBMISSION REVIEW	APRIL 11, 2017	AECOM
DRAWN BY	2	REVISED AS PER CML COMMENTS	JULY 12, 2017	AECOM
CHECKED	3	REVISED AS PER CML COMMENTS	AUG 16, 2017	AECOM
APPROVED	4	REVISED AS PER CML COMMENTS	SEP 26, 2017	AECOM
DATE	5	REVISED AS PER CML COMMENTS	OCT 16, 2017	AECOM
	6	REVISED AS PER CML COMMENTS	NOV 14, 2017	AECOM

DISBURSAL OF DRAWING  
THIS DRAWING HAS BEEN PREPARED FOR USE OF  
AECOM'S CLIENT AND MAY NOT BE USED,  
REPRODUCED OR HELD UPON BY THIRD  
PARTIES, EXCEPT AS AGREED BY AECOM AND ITS  
CLIENT, AS REQUIRED BY LAW OR PER USE BY  
GOVERNMENTAL AGENCIES. AECOM  
ACCEPTS NO RESPONSIBILITY AND OWNS NO  
LIABILITY WHATSOEVER TO ANY PARTY THAT  
MODIFIES THIS DRAWING WITHOUT AECOM'S  
EXPRESS WRITTEN CONSENT. DO NOT SCALE  
THIS DOCUMENT. ALL MEASUREMENTS MUST BE  
OBTAINED FROM LISTED DIMENSIONS.

**AECOM**  
11000, Ontario  
516.673.0512

OWNER'S SEAL  
P. A. MALLISTER  
INSPECTOR OF WORKS  
CITY OF LONDON

**CORPORATION OF THE  
CITY OF LONDON**  
London  
CANADA

SCALE  
SCALE = 1" = 40'  
0" 10' 20' 30' 40'

**HAJJAR SUBDIVISION  
SIFTON PROPERTIES LIMITED**

**SEWER AREA PLAN**

PROJECT No.  
**60512435**

SHEET No.  
**1**

PLAN FILE No.