

Bill No. 345
2024

By-law No. S.- ____ - ____

A by-law to assume certain works and services
in the City of London. (Innovation Park
Subdivision Phase 2, Plan 33M-592)

WHEREAS the Deputy City Manager, Environment and Infrastructure of
The Corporation of the City of London has reported that works and services have been
constructed to their satisfaction in Innovation Park Subdivision Phase 2, Plan 33M-592;

AND WHEREAS it is deemed expedient to assume the said works and
services;

NOW THEREFORE the Municipal Council of The Corporation of the City
of London enacts as follows:

1. The Corporation of the City of London assumes the following works and
services, namely:

Innovation Park Subdivision Phase 2, Plan 33M-592
Development & Compliance Services/Industrial Land Development

Innovation Gate - all;

Innovation Drive - all;

External Works Bradley Avenue - all;

Concept Drive within 33M-544 - all;

2. The warranty period for the works and services in the subdivision referred
to in Section 1 of this by-law will commence for a duration of one calendar year from
September 26, 2024.

3. This by-law comes into force and effect on the day it is passed subject to
the provisions of PART VI.1 of the *Municipal Act*, 2001.

PASSED in Open Council on October 15, 2024 subject to the provisions of
PART VI.1 of the *Municipal Act*, 2001.

Josh Morgan
Mayor

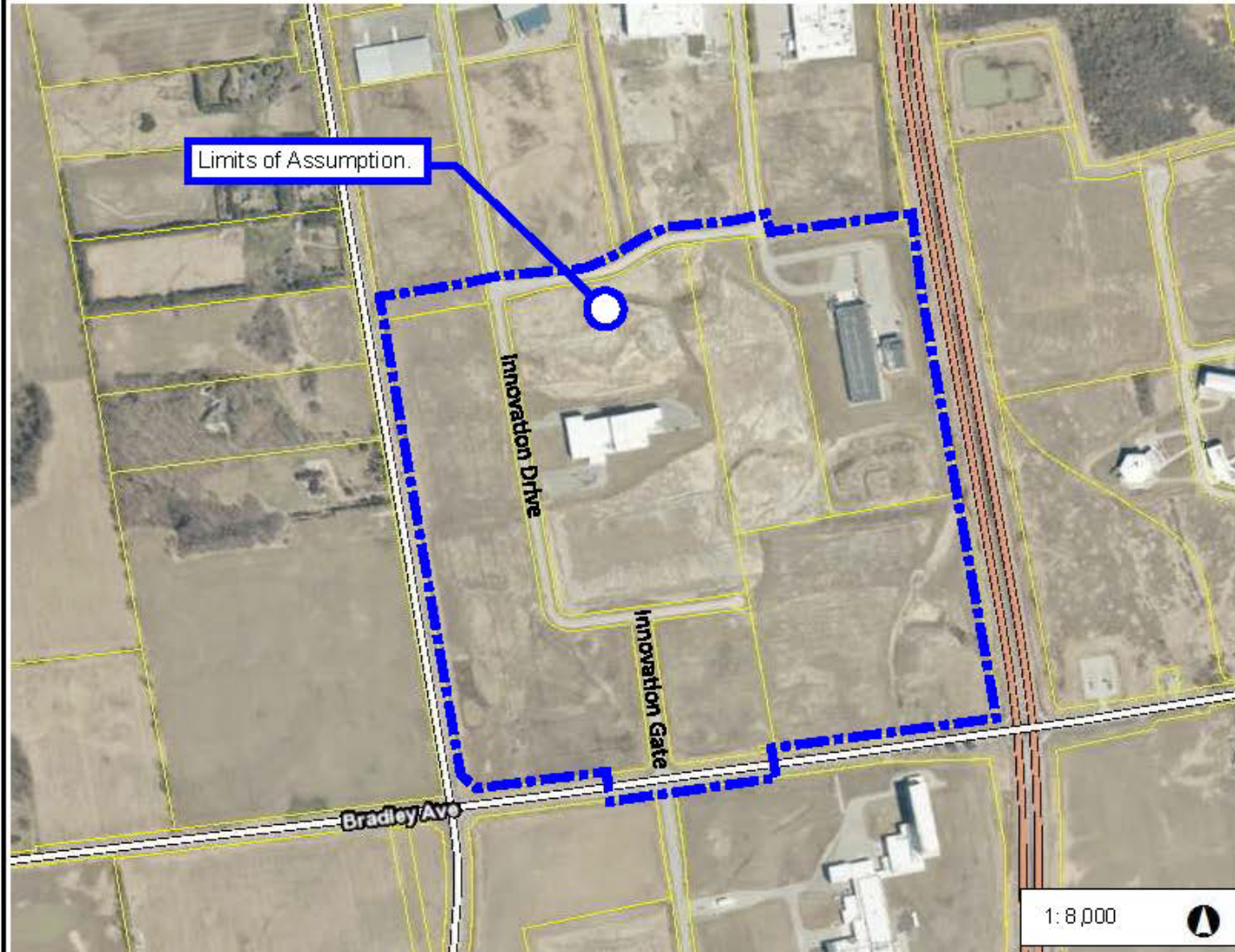
Michael Schulthess
City Clerk

First Reading – October 15, 2024
Second Reading – October 15, 2024
Third Reading – October 15, 2024



Assumption Limits Innovation Park Subdivision Phase 2, Plan 33M-592

Notes



0.4 0 0.20 0.4 Kilometers

This map is a user generated static output from city of london site and is for reference only.

NAD_1983_UTM_Zone_17N
© City of London

THIS MAP IS NOT TO BE USED FOR NAVIGATION