

Bill No. 334  
2024

By-law No. S.- \_\_\_\_ - \_\_\_\_

A by-law to assume certain works and services  
in the City of London. (Creekview Phase 3,  
Plan 33M-767 – Stage 2)

WHEREAS the Deputy City Manager, Environment and Infrastructure of  
The Corporation of the City of London has reported that works and services have been  
constructed to their satisfaction in Creekview Phase 3, Plan 33M-767 – Stage 2;

AND WHEREAS it is deemed expedient to assume the said works and  
services;

NOW THEREFORE the Municipal Council of The Corporation of the City  
of London enacts as follows:

1. The Corporation of the City of London assumes the following works and  
services, namely:

Creekview Phase 3, Plan 33M-767 – Stage 2  
Southside Group  
Tokala Trail -all  
Bridgehaven Drive – all  
Walkway Block 126 – all  
Stormwater Management Block 127 – all  
Park Block 128 - all

2. The warranty period for the works and services in the subdivision referred  
to in Section 1 of this by-law will commence for a duration of one calendar year from  
September 18, 2024.

3. This by-law comes into force and effect on the day it is passed subject to  
the provisions of PART VI.1 of the *Municipal Act*, 2001.

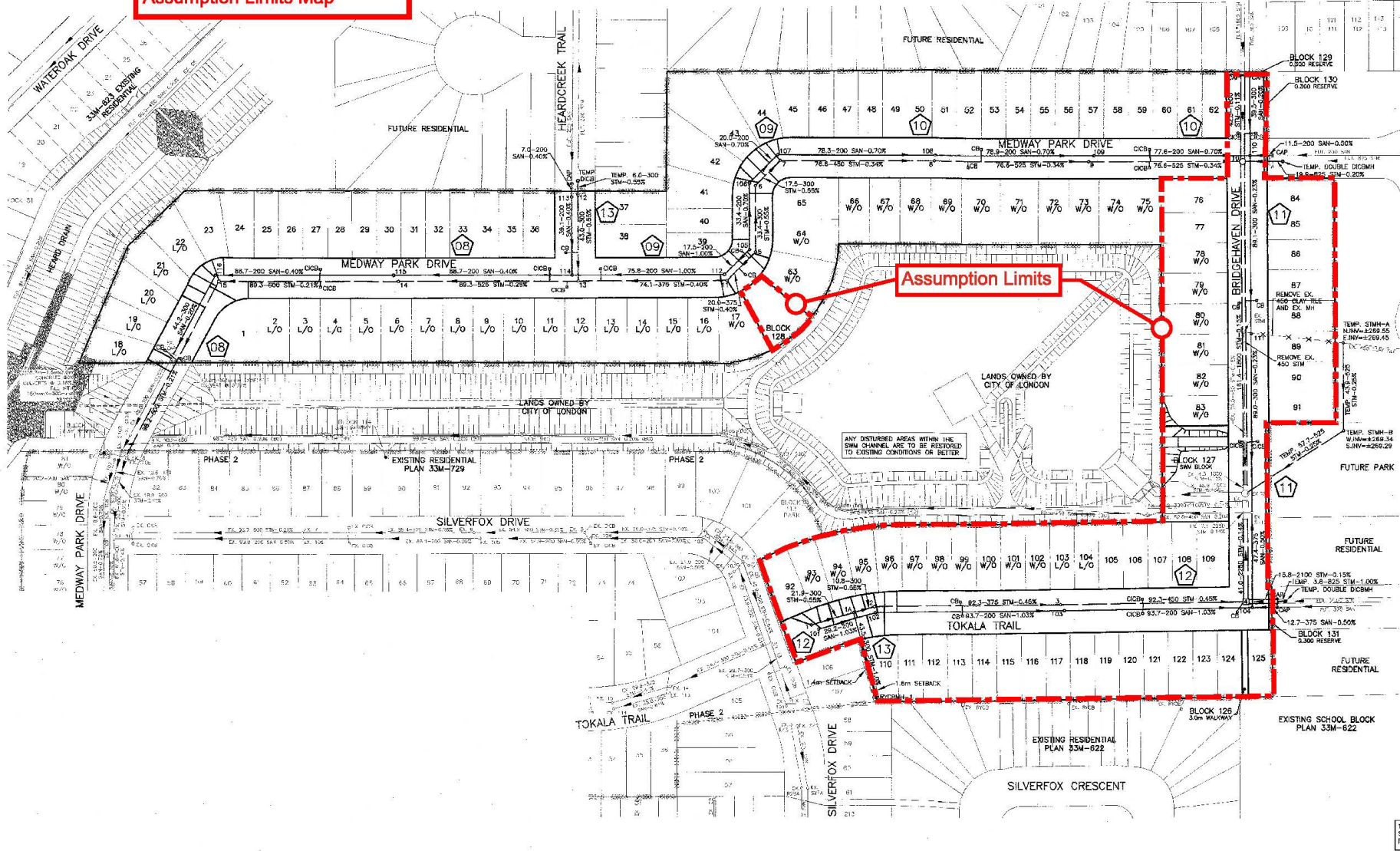
PASSED in Open Council on September 24, 2024 subject to the  
provisions of PART VI.1 of the *Municipal Act*, 2001.

Josh Morgan  
Mayor

Michael Schulthess  
City Clerk

First Reading – September 24, 2024  
Second Reading – September 24, 2024  
Third Reading – September 24, 2024

**33M-767 Creekview Phase 3  
 Stage 2  
 Assumption Limits Map**



**LEGEND**

- 129 DENOTES LOT NUMBERS
- 33288 33288 PHASE LIMIT
- 110 SANITARY MANHOLE
- 13 STORM MANHOLE OR MANHOLE TIE
- SANITARY SEWER
- STORM SEWER
- CATCH BASIN
- CURB INLET CATCH BASIN
- TWIN-INLET CATCH BASIN
- PLAN & PROFILE DRAWING NUMBER
- HOUSE SETBACK LIMITS / EASEMENTS
- EXISTING STORM SEWER
- EXISTING SANITARY SEWER
- WATER MAIN
- FIRE HYDRANT
- WATER VALVE

CITY OF LONDON  
 DEVELOPMENT SERVICES  
 ACCEPTED  
 SEP 13 2018  
 SUBJECT TO THE  
 CONDITIONS IDENTIFIED BY THE  
 ACCOMPANYING LETTER OF THE SAME DATE

APPROVED TO THE  
 2018 CITY OF LONDON  
 DEVELOPMENT SERVICES  
 THE PROPERTY OF  
 BRISBANEWAY  
 CONSULTANT'S COPY

100mm SANITARY CLEANOUTS TO BE INSTALLED ON ALL  
 SANITARY STACK CLEANOUTS SHALL BE LOCATED 0.30m  
 FROM THE P/L ON THE ROAD ALLOWANCE

EXISTING SERVICES	DRAWING # SOURCE	DATE	CONSUMED / S.I.V.G.S	COMPLETION	DETAILS	NO	REVISIONS	DATE	CONSULTANT
					ISSUED	01	REVISED AS PER CITY COMMENTS	APRIL 2018	MT
					ISSUED BY	02	REVISED AS PER CITY COMMENTS	JUNE 2018	MT
					CHECKED				
					APPROVED				
					DATE				



SCALE  
 3000 N.T.A.  
 SCALE: 1" = 100m  
 10m = 1" = 20m

CREEK VIEW SUBDIVISION - PHASE 3  
 LANDEA DEVELOPMENTS INC.  
 MASTER PLAN OF SERVICES

PROJECT NO. 41995-134  
 SHEET NO. 1  
 PLAN FILE NO.