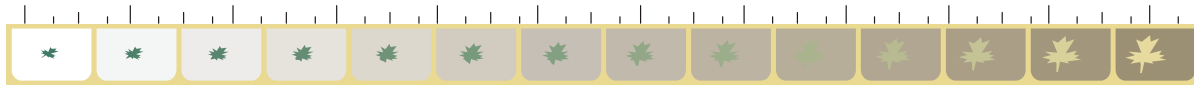


SCHEDULE "A"

City of London

Emergency Response Plan



November 2013

CITY OF LONDON EMERGENCY RESPONSE PLAN

TABLE OF CONTENTS

SECTION 1 INTRODUCTION

1.1	DEFINITION OF AN EMERGENCY	1
1.2	AIM	1
1.3	AUTHORITY	1
1.4	EMERGENCY RESPONSE	2
1.5	LEVELS OF EMERGENCIES	2
1.6	EXERCISING THE PLAN	3
1.7	REVIEW AND AMENDMENT	4

SECTION 2 DECLARATION / TERMINATION OF AN EMERGENCY

2.1	DECLARATION OF AN EMERGENCY	5
2.2	REQUESTS FOR ASSISTANCE	5
2.3	TERMINATION OF AN EMERGENCY	6
2.4	RECOVERY AND RESTORATION OF SERVICES	6

SECTION 3 NOTIFICATION AND ACTIVATION

3.1	NOTIFICATION OF AN EMERGENCY	8
3.2	COMMUNITY CONTROL GROUP (CCG) OPERATIONS	8
3.3	SUPPLEMENTARY PLANS	9

SECTION 4 COMMUNITY CONTROL GROUP (CCG)

4.1	CCG MEMBERSHIP	10
4.2	CCG ADVISORY GROUP	11
4.3	APPOINTMENT OF THE SITE INCIDENT COMMANDER	11
4.4	RESPONSIBILITIES OF THE SITE INCIDENT COMMANDER	13

SECTION 5 RESPONSIBILITIES OF THE CCG MEMBERS

5.0	RESPONSIBILITIES	15
5.1	MAYOR	15
5.2	CITY MANAGER	16
5.3	CITY CLERK	16
5.4	CHIEF OF POLICE	17
5.5	FIRE CHIEF	17
5.6	MANAGING DIRECTOR, ENVIRONMENTAL AND ENGINEERING SERVICES AND CITY ENGINEER	18
5.7	MANAGING DIRECTOR, NEIGHBOURHOOD, CHILDREN AND FIRE SERVICES	19

5.8	MEDICAL OFFICER OF HEALTH	19
5.9	MIDDLESEX- LONDON EMERGENCY MEDICAL SERVICES (EMS) CHIEF	20
5.10	DIRECTOR, COMMUNICATIONS AND COMMUNITY EMERGENCY INFORMATION OFFICER	21
5.11	COMMUNITY EMERGENCY MANAGEMENT COORDINATOR (CEMC)	21
5.12	HOSPITALS REPRESENTATIVE	22
5.13	CHIEF EXECUTIVE OFFICER, LONDON HYDRO INCORPORATED	22
5.14	GENERAL MANAGER, LONDON TRANSIT COMMISSION	23

SECTION 6 RESPONSIBILITIES OF THE CCG ADVISORY GROUP MEMBERS

6.1	MANAGING DIRECTOR, CORPORATE SERVICES AND CHIEF HUMAN RESOURCES OFFICER	24
6.2	MANAGING DIRECTOR, DEVELOPMENT AND COMPLIANCE SERVICES AND CHIEF BUILDING OFFICIAL	24
6.3	MANAGING DIRECTOR, CORPORATE SERVICES, CITY TREASURER AND CHIEF FINANCIAL OFFICER	25
6.4	CHIEF TECHNOLOGY OFFICER	25
6.5	REGIONAL CORONER	25
6.6	THE THAMES VALLEY DISTRICT SCHOOL BOARD AND THE LONDON DISTRICT CATHOLIC SCHOOL BOARD	25
6.7	OFFICE OF THE FIRE MARSHAL AND EMERGENCY MANAGEMENT	26
6.8	INCIDENT REPRESENTATIVE	26
6.9	DND – REGIONAL LIASION OFFICER	26
6.10	ADDITIONAL EOC ADVISORS	27

SECTION 7 OTHER AGENCIES AND ORGANIZATIONS

7.1	CENTRAL AMBULANCE COMMUNICATIONS CENTRE	28
7.2	ST. JOHN AMBULANCE	28
7.3	THE SALVATION ARMY	28
7.4	CANADIAN RED CROSS	28
7.5	AMATEUR RADIO EMERGENCY SERVICE	28
7.6	FEDERAL GOVERNMENT AGENCIES	29
7.7	BELL CANADA	29
7.8	UNION GAS	29

SECTION 8 POPULATION EVACUATION

8.0	GENERAL	30
-----	---------	----

SECTION 9 PLAN DISTRIBUTION LIST

9.0	GENERAL	31
-----	---------	----

1.0 INTRODUCTION

1.1 DEFINITION OF AN EMERGENCY

The Provincial *Emergency Management and Civil Protection Act* defines an emergency as:

“An emergency means a situation or an impending situation that constitutes a danger of major proportions that could result in serious harm to persons or substantial damage to property and that is caused by the forces of nature, a disease or other health risk, an accident or an act whether intentional or otherwise.”

These situations could threaten public safety, public health, the environment, property, critical infrastructure or economic stability. In order to protect residents, businesses and visitors, the City of London supports a coordinated emergency response by various agencies under the direction of the Community Control Group. These are distinct arrangements and extraordinary procedures from the normal core services normally delivered by the emergency services.

The City of London Corporate Security and Emergency Management Division (CSEMD) in conjunction with the Community Emergency Management Program Committee developed this emergency response plan to ensure that all Civic Departments, Boards, Commissions and Municipal Council are prepared to carry out assigned responsibilities in the event of an emergency situation.

The *Emergency Management and Civil Protection Act* requires that the Emergency Response Plan be a risk-based plan, developed and maintained to respond to an emergency. This includes steps to guide the response effort, identify persons, equipment and resources for activation in an emergency and outline how they will be coordinated.

In addition, it is important that residents, businesses and interested visitors be aware of the Emergency Response Plan and its provisions. Copies of the City of London Emergency Response Plan may be viewed on the City of London web site www.london.ca/emergency and are available through the Emergency Management Office.

1.2 AIM

The aim of this plan is to make provision for the extraordinary arrangements and measures that may be required to safeguard property, the environment and the health, safety and welfare of the residents, businesses and visitors of the City of London when faced with an emergency. The response plan enables a centralized controlled and coordinated response to emergencies in the City of London and meets the legislative requirements of the Emergency Management and Civil Protection Act.

1.3 AUTHORITY

The legal authority for London's Emergency Response Plan is the Provincial Emergency Management and Civil Protection Act, RSO 1990 Chapter E-9. In accordance with the Emergency Management and Civil Protection Act, the following actions were taken with respect to London's Emergency Response Plan:

- Issued under authority by City of London By-law; and
- Filed with Emergency Management Ontario, Ministry of Community Safety and Correctional Services.

For the purposes of the Act and Regulations, London's Municipal Emergency Control Group (M.E.C.G.) shall be referred to in this plan as the Community Control Group (C.C.G.)

1.4 EMERGENCY RESPONSE

Emergency action will include the earliest possible recognition of and response to the situation by all services; the earliest possible establishment of overall control of emergency operations by municipal authorities; the provision of essential aid and assistance for persons affected by the emergency; the recording of decisions taken by Municipal authorities and of costs incurred in relation to the emergency; and, the timely distribution of information on the emergency to all services, to the public, the media and senior governments.

When an incident or an emergency can be handled by emergency services in the normal course of routine operations, they are authorized to carry out their respective duties and this plan does not take effect.

When an emergency exists but has not yet been declared, actions may be taken under this emergency response plan as required to protect property and the health, safety and welfare of the citizens of the City of London.

When an emergency exists as defined by the act or determined by an emergency service that has major impact on the municipality or the health, safety and welfare of the citizens, *the City of London Community Control Group (C.C.G.) shall be notified of the incident.*

1.5 LEVELS OF EMERGENCIES

Emergency levels are defined based on the impact in the following areas:

- Evacuation;
- Impact on infrastructure;
- Threat to/loss of life;
- Impact on essential services;
- Emergency service response; and,
- Declared emergency.

It should be noted that, while this plan sets out procedures for major emergencies and disasters, responsibilities outlined in Section 5 are applicable for all levels of emergencies, and whether the C.C.G. is convened or not.

There are three levels of emergencies:

1.5.1 LEVEL ONE

Criteria:

- Evacuation - large scale evacuation;
- Impact on Infrastructure - all or most roads closed/loss of major municipal facilities, reducing or eliminating essential service;
- Threat to/Loss of Life - major loss of life or threat to a large number of people;
- Emergency Service Response - all or most emergency services involved, impact on coverage; and,
- Emergency Operations Centre - activated and/or Community Control Group convened.

1.5.2 LEVEL TWO

Criteria:

- Localized Evacuation - of an area requiring a reception center or other extra-ordinary measures;
- Impact on Infrastructure - major roadway or facility impacted;
- Disruption to business or industry;
- Threat to/Loss of Life - loss of life is minimal or non-existent. Threat to public may be substantial;
- Emergency Service Response - may or may not affect all essential services. (example severe storm); and,
- C.C.G. members may be advised of the incident but not convened.

1.5.3 LEVEL THREE

Criteria:

- Limited Evacuation - small number of people and for short duration;
- Impact on Infrastructure - secondary roadway closed for short duration;
- Threat to/Loss of Life - threat or loss of life is minimal; and,
- Emergency Service Response - limited to one or two agencies with short duration response.

1.6 EXERCISING THE PLAN

The ability to respond under emergency conditions must be assessed under non-emergency conditions. The efficacy of this Plan will be tested as follows:

- Annual testing in accordance with the Emergency Management and Civil Protection Act regulations, and,
- A notification exercise to test the alerting network will be conducted as required.

1.7 REVIEW AND AMENDMENT

This Plan will be maintained by the Emergency Management Division. It will be reviewed annually by members of the Community Emergency Management Program Committee. Normal administrative changes will be updated as part of the annual review. Changes that directly impact on the viability of the plan shall be brought to the attention of the City Manager and/or the Senior Leadership Team.

2.0 DECLARATION / TERMINATION OF AN EMERGENCY

2.1 DECLARATION OF AN EMERGENCY

Where serious and extensive steps to protect property and the health, safety and welfare of the public are deemed necessary in managing the emergency, the Mayor, on the advice of the C.C.G., may declare that an emergency exists under the provisions of Section 4 of the Emergency Management and Civil Protection Act, R.S.O. 1990 and may designate an area within the City of London as an "Emergency Area."

Upon declaring an emergency, the Mayor may authorize notification to any of the following:

- Emergency Management Ontario, Ministry of Community Safety and Correctional Services;
- Members of City Council;
- Neighbouring Community Emergency Management Coordinators, as appropriate;
- The Public;
- Neighbouring community officials, as appropriate;
- Local Members of Provincial Parliament (MPP); and,
- Local Members of Parliament (MP).

The Mayor will authorize notification to the Solicitor General as mandated under the Emergency Management and Civil Protection Act.

Under such a declaration, the Mayor may authorize any of the following actions:

- Evacuation of buildings within the vicinity considered dangerous to occupants;
- Dispersal of persons judged to be in danger or whose presence hinders emergency operations;
- Discontinuation of any service without reference to other consumers where continuation of service constitutes a hazard within the emergency area;
- Provision of shelter as required and available for residents of the emergency area in need of assistance due to conditions of the emergency;
- Deployment of Municipal personnel and equipment;
- Request assistance from volunteers and other agencies not under Municipal control such as St. John Ambulance, the Salvation Army, Canadian Red Cross, Amateur Radio Emergency Service, snowmobile clubs, local industry; and,
- Request assistance from the County of Middlesex and its Constituent Municipalities.

2.2 REQUESTS FOR ASSISTANCE

Assistance may be requested by the City in a declared emergency when needed, under the following guidelines:

- The assistance of Federal and Provincial Ministries may be requested via Emergency Management Ontario through the Community Emergency Management Coordinator;

- Assistance from other municipalities may be requested through the respective head of council and/or through senior staff.

The City Clerk will maintain a record of requests made for Municipal, Provincial or Federal Government assistance in the emergency.

Direction and control of emergency operations will rest with Municipal authorities except where the Provincial or the Federal Government assumes control.

2.3 TERMINATION OF AN EMERGENCY

A community emergency may be terminated at any time by:

- Mayor or Acting Mayor; or
- City Council; or,
- Premier of Ontario.

When terminating an emergency, the Mayor may authorize notification to:

- Emergency Management Ontario, Ministry of Community Safety and Correctional Services;
- Members of City Council;
- County Officials, as appropriate;
- Members of the Media;
- Public;
- Neighbouring community officials, as required;
- Local Members of Provincial Parliament; and,
- Local Members of Parliament.

2.4 RECOVERY AND RESTORATION OF SERVICES

Community Control Group (C.C.G.)

The C.C.G. will direct responsibilities for the recovery and restoration of services, the orderly and safe return of citizens to their homes and the clean-up following an emergency situation.

The Managing Director of Environmental and Engineering Services and City Engineer (or designate) will be responsible to co-ordinate this phase of the emergency with support and advice from other agencies as required. Where a spill of hazardous material is involved, the responsibility of the consignor or owner of the material will be considered.

Inspection of dwellings and buildings to ensure safe occupation will be organized by the Managing Director, Development & Compliance Services & Chief Building Official with inspection assistance being provided by the Fire Department, London Hydro, Electrical Safety Authority, Middlesex-London Health Unit, and other agencies as required.

Communications

The Director, Communications acting as the Community Emergency Information Officer will work with the C.C.G. to arrange for the prompt release of information and direction to the public through the media concerning clean-up operations and the occupation of dwellings and buildings. This includes the use of the Public Inquiry Centre to assist with public inquiries.

3.0 NOTIFICATION AND ACTIVATION

3.1 NOTIFICATION OF AN EMERGENCY

Emergency Services personnel are typically first on the scene mitigating the incident during any emergency. When the Police, Fire, EMS, or Engineering Supervisor at the site considers the situation or potential situation beyond the capability of the emergency service to manage or support without outside assistance, he/she will so advise the Chief of Police, Fire Chief, EMS Chief or the Managing Director, Environmental & Engineering Services & City Engineer respectively.

The following C.C.G. members (or their alternates), in consultation with the Community Emergency Management Coordinator, will decide if the situation calls for assembly of the Community Control Group:

- Chief of Police;
- Fire Chief;
- EMS Chief;
- Managing Director, Environmental & Engineering Services & City Engineer;
- Community Emergency Management Coordinator;
- Medical Officer of Health;
- City Manager;
- Managing Director, Neighbourhood. Children and Fire Services; and,
- General Manager, London Hydro.

Based on the scope of the emergency they will determine what other C.C.G. members, advisors and support staff are required and, if so, will request their attendance through the Community Emergency Management Coordinator.

3.2 COMMUNITY CONTROL GROUP (C.C.G.) OPERATIONS

Emergency Operations Centre (E.O.C.)

Corporate Security and Emergency Management Division (CSEMD) will maintain the Emergency Operations Centre in a state of readiness. This facility is located at the #12 Firehall in Byron. This is the location where the C.C.G. would convene. This centre may be activated at other times to monitor situations that may escalate or for co-ordination of planned events.

This facilities main role is to support the Site Team and assist in ensuring service levels to other parts of the Community.

The E.O.C. consists of a number of rooms:

- OPERATIONS ROOM – A large room where operational staff monitor information and collaborate in order to provide situation reports and action plans to the Policy Group.
- POLICY ROOM – Adjoining the Operations Room, a boardroom that allows the Mayor and City Manager to obtain updates from the E.O.C. Director. The City Manager (Policy Group Chair) determines the membership of the Policy Group, normally senior

representatives of the key agencies/departments. The E.O.C. Director is appointed by Policy Group to provide leadership in the Operations Room and consolidate information to provide situation reports and upcoming priorities to the Policy Group.

- **BREAK-OUT ROOM** – A smaller meeting room is available for working group or separate task-based discussions.
- **ADMINISTRATIVE AREAS** – Access control and the Amateur Radio station are housed in the front administrative area. The Manager's Office can also be used as a breakout room.
- **COMMUNITY ROOM** – A segregated room at the rear of the building can be setup to house the Public Inquiry Centre.

Operating Cycle

Members of the Policy Group will meet at regular intervals to receive a consolidated report from the E.O.C. Director, The Policy Group Chair will establish the frequency of meetings based on discussions with the E.O.C. Director and the Emergency Site Incident Commander. Meetings will be kept as brief as possible allowing C.C.G. members to carry out their individual responsibilities. A display board identifying the status of actions will be maintained and prominently displayed in the Operations Room.

The City Manager will chair operating sessions of the Policy Group. The Policy Group will consider strategic decisions and will break to permit members to consult Operations Room staff, help develop action plans and contact others as necessary.

The intent of these conference sessions is to provide an uninterrupted forum for the Policy Group members to update one another and to recommend necessary actions to be taken. The Mayor will join conference sessions when available and confirm extra-ordinary decisions recommended by the Policy Group.

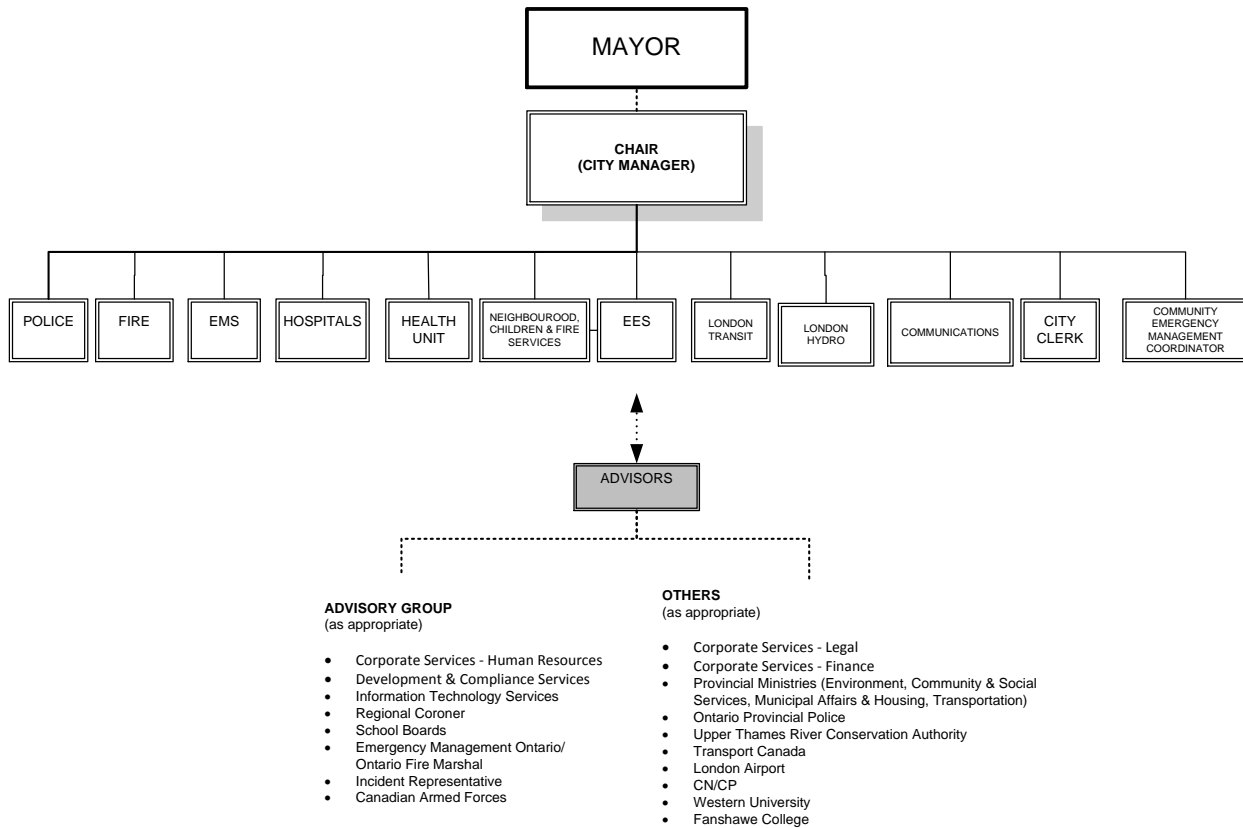
The Policy Group will require support staff to assist and to record key decisions. The CEMC will provide a Scribe to the Policy Group. C.C.G. members may require staff at the E.O.C. to handle communications to and from their department or agency at an emergency site. It is the responsibility of all C.C.G. members to notify their staff and associated volunteer organizations.

3.3 SUPPLEMENTARY PLANS

Separate emergency plans are maintained by Civic Departments, Boards and Commissions to respond to specific emergency conditions. One copy of each such plan should be available in the Emergency Operations Centre and be updated annually by the responsible agency. Copies should also be filed with the Community Emergency Management Coordinator.

4.0 COMMUNITY CONTROL GROUP (C.C.G.)

The Community Control Group is responsible for providing immediate and continuing interchange of information, assessment and planning among the officials responsible for emergency operations. Each C.C.G. member will have identified designate(s) to act on their behalf when they are not available. The C.C.G. will consist of two groups of officials:



4.1 C.C.G. MEMBERSHIP

The Membership of the C.C.G. will be comprised of the following officials:

- Mayor;
- City Manager;
- City Clerk;
- Chief of Police;
- Fire Chief;
- EMS Chief;
- Managing Director, Environmental & Engineering Services & City Engineer;
- Managing Director, Neighbourhood, Children and Fire Services;
- Medical Officer of Health;
- Director, Communications;
- General Manager, London Hydro;

- General Manager, London Transit Commission;
- Community Emergency Management Coordinator; and,
- Hospitals Representative.

4.2 C.C.G. ADVISORS

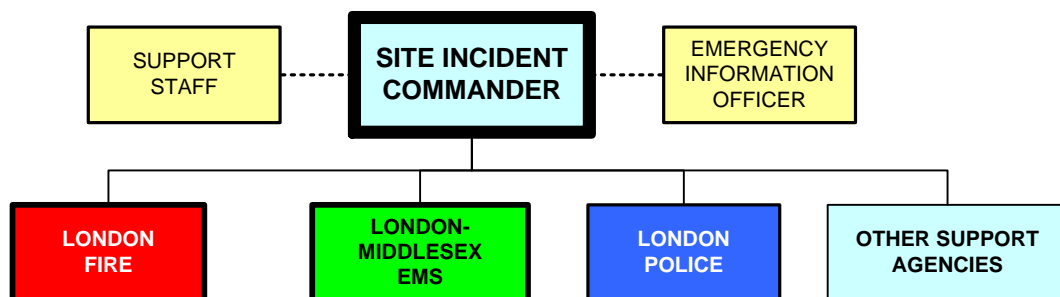
The Advisory Group can be comprised of any or all of the following officials:

- Managing Director, Development & Compliance Services & Chief Building Official;
- Managing Director, Corporate Services & Chief Human Resources Officer;
- Regional Coroner;
- Thames Valley District School Board;
- London District Catholic School Board;
- The Incident Representative;
- Ontario Ministry of the Environment;
- Upper Thames River Conservation Authority;
- Emergency Management Ontario Representative;
- Ontario Provincial Police Representative;
- Department of National Defense, Regional Liaison Officer;
- Liaison staff from Provincial and Federal Ministries; and,
- Any other officials, experts or representatives from the public or private sectors as deemed necessary by the C.C.G.

All members of the C.C.G. shall designate alternates to act for them on the C.C.G. in their absence.

4.3 APPOINTMENT OF THE SITE INCIDENT COMMANDER

The City of London has utilized standard Emergency Site Management (ESM) protocols for many years. ESM principles stipulate that one agency takes the lead role at a major incident to provide co-ordination and leadership. This person normally is drawn from the lead agency and another officer/manager takes over directing operations within that agency. This approach has been advocated in both federal and provincial level training.



SITE INCIDENT COMMANDER

The Emergency Site Incident Commander (I.C.) is appointed by those response agencies on site. He/she will usually be from the lead agency involved in the specific type of emergency. For example, in a fire incident, an I.C. from the Fire Department would be appointed. Another officer from the fire department would then assume responsibility for fire operations. In a criminal incident, the I.C. would most probably be from London Police. In the evacuation of a Health Care Facility or mass casualty incident, an EMS person may be the I.C.

However, the collaborative decision on which person is most appropriate is based on the Knowledge, Skills and Abilities (KSAs) of the on-scene personnel.

This appointment would be amended or confirmed by the Community Control Group, when assembled. This appointment may be reassessed as the event moves from response to recovery phase.

SUPPORT STAFF

This individual is responsible for liaison activities from the scene management perspective. They assist the Incident Commander in coordinating activities with other related agencies and organizations. They also offer assistance in obtaining resources and assistance. Other logistics staff may be called in to sustain operations (radio/telecommunications, Command Post, food/water, washrooms)

EMERGENCY INFORMATION OFFICER

This person develops and releases information about the incident to the news media, incident personnel, The Community Control Group (C.C.G) and political leaders, and other appropriate agencies and organizations. He/she supports the Site Incident Commander with media interviews and works with other involved communications personnel to ensure consistent, accurate and timely communications.

LONDON FIRE

The Fire Department is responsible for fire suppression, extrication, water and high angle rescue, and hazmat operations.

LONDON POLICE

Police establish perimeters to facilitate the movement of emergency vehicles and restrict access to essential emergency service personnel. They also provide policing services related to a criminal activities and related investigations.

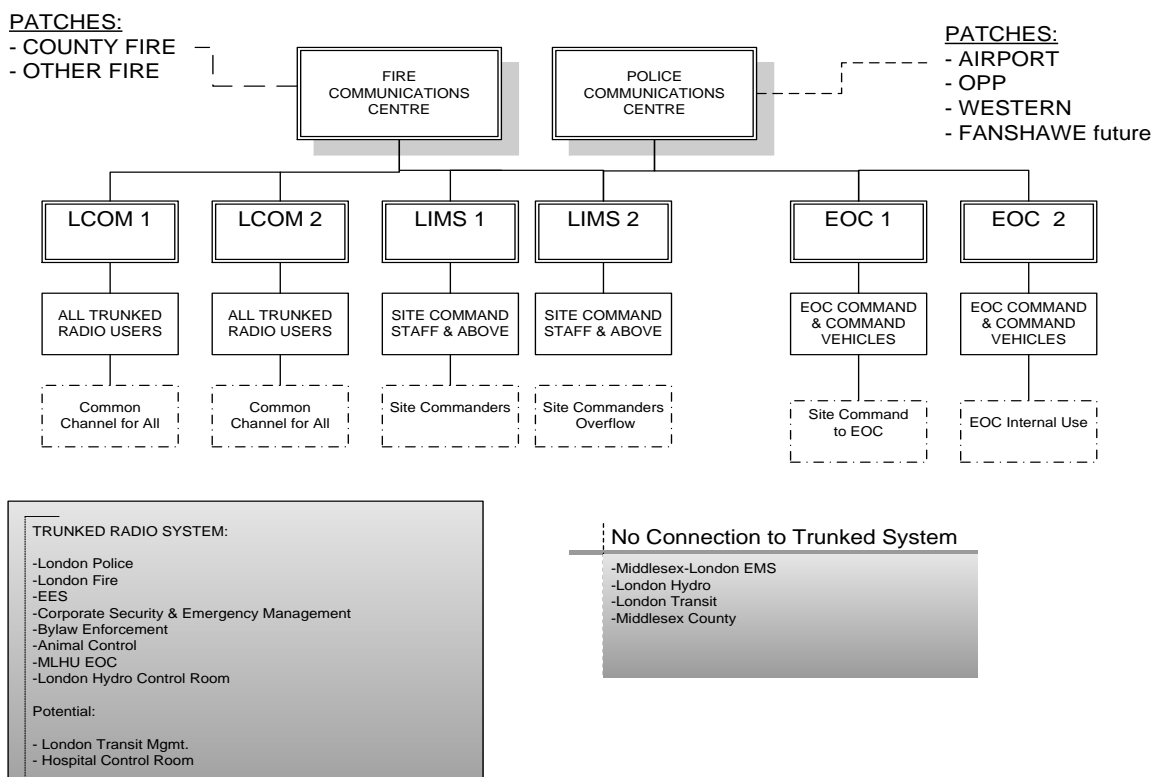
MIDDLESEX-LONDON EMS

EMS looks after triage and treatment of casualties as well as liaising through Central Ambulance Communications Centre (CACC) with hospitals for the efficient distribution of patients. They also liaise with the Medical Officer of Health on health related concerns.

RADIO COMMUNICATIONS

Services likely to be at an emergency site include Police Services, Fire Department, Middlesex-London EMS, Environmental and Engineering Services, London Hydro and London Transit personnel. They will make every effort to ensure there is an efficient means of communication in place, both to and from the Emergency Site Incident Commander and between emergency service groups.

A clear communications link must be established between the Emergency Incident Commander and the E.O.C. This is done the 800 Mhz. common talk group selected by the Site Team. This talk group is to communicate key information relative to Command decisions. Each organization utilizes their own operational channels/tacs to relay information within their own organization.



Communications relating to operational decisions should utilize individual agency channels or talk groups to communicate with staff in the Operations Room at the Emergency Operations Centre.

4.4 RESPONSIBILITIES OF THE SITE INCIDENT COMMANDER

Co-ordination of all resources at the emergency site is important to an effective response. The Senior Fire Officer and Police Officer in conjunction with the Environmental & Engineering Services Supervisor (when applicable) on site will agree who should act as the initial Incident

Commander depending on the nature of the emergency and will advise the Fire Chief and Chief of Police respectively.

An on-site Incident Command Post will be established as soon as practical, to bring together supervisors of all emergency services operating at the scene for the purposes of coordinated action. When available and appropriate, the London Police Community Command Vehicle will be requested to serve as a multi-agency command post.

Some situations may require more than one Incident Commanders when more than one emergency site exists. It may also be necessary to establish a resource staging area so that outside resources have a definitive assembling/marshaling point. It will also be necessary to establish an area close, yet in safe proximity, to the emergency site for the media to assemble. The location should be easily identified, and located in proximity to the on-scene Incident Command Post.

The Incident Commander, in liaison with the Senior Fire, Police, EMS and other officials on site, is responsible to:

- Direct, control and coordinate the onsite emergency response effort of the emergency response agencies, in accordance with direction from the Senior Officers;
- Maintain contact with the leader of each agency and inform on progress on each;
- Assess the situation, establish objectives, and determine the site operational plan;
- In conjunction with Police, EMS, Fire and other key agencies, establish site layout and a Command Post, including an assembly area for additional staff resources for the control and co-ordination of emergency site operations;
- Establish emergency site communications capabilities;
- Establish which agencies/personnel are allowed access past the outer and inner perimeters and advise onsite police;
- In coordination with the Director, Communications, establish a Site Media Spokesperson. Request public information support, as required;
- Maintain continuous contact with City Manager and the Community Control Group to report the operational status at the emergency site and advise of any assistance or other resources required;
- Take such necessary actions to minimize the effects of the emergency;
- When recovery operations are nearing completion, monitor and advise the C.C.G. about agencies preparing to depart the site;
- Maintain a log of all major decisions, instructions issues and actions taken; and,
- Prepare and submit a final report containing operational evaluation of his/her area of responsibility, including recommendations on changes to the Emergency Response Plan and Supplementary Plans.

5.0 RESPONSIBILITIES OF THE C.C.G. MEMBERS

The members of the C.C.G. are authorized to take the following actions:

- Calling out and mobilizing their respective services, equipment or other agencies as required;
- Coordinating and directing services and ensuring that any actions necessary for mitigating the effects of the emergency are taken;
- Determining if the location and composition of the C.C.G. are appropriate (and that appropriate advisory and support members are present);
- Advising the Mayor as to whether the declaration of an emergency is recommended;
- Notifying personnel under their direction, of the declaration and termination of the emergency;
- Advising the Mayor on the need to designate all or part of the City as an emergency area;
- Ensuring that a Site Incident Commander is appointed and confirmed if required;
- Ensuring support to the Site Team in terms of equipment, staff and other resources as required;
- Ordering, coordinating and/or overseeing the evacuation of those deemed to be in danger;
- Discontinuing utilities or services provided by public or private agencies, e.g. hydro, water, gas, closing down a shopping plaza/mall;
- Arranging for services and equipment from outside local agencies;
- Notifying, requesting assistance from and/or liaising with various levels of government and other public or private agencies not under municipal control, as considered necessary;
- Determining if volunteers are required and authorizing requests to identify agencies for assistance;
- Authorizing transportation arrangements for evacuation or transport of persons and/or supplies;
- Ensuring that pertinent information is promptly forwarded to Communications for dissemination;
- Determining the need to establish advisory groups and/or sub-committees/working groups for any aspect of the emergency including recovery;
- Authorizing expenditure of money required to deal with the emergency;
- Maintaining a log outlining issues, decisions made and actions taken for submission to the City Manager within one week of the termination of the emergency;
- Participating in the operational debriefing following the emergency; and,
- Ensuring support to emergency service personnel and the citizens suffering emotional trauma as a result of critical incident stress.

5.1 MAYOR

The Mayor is responsible for the following:

- The strategic direction and control of the overall response;
- Providing overall leadership to the community;

- Designating specific responsibilities to members of the C.C.G. as deemed appropriate and receiving interim reports on a continuing basis for such special areas of concern;
- Representing the City of London with Senior Government officials and making the appropriate notifications;
- Serving as main media spokesperson for the Municipality;
- Determining if and when an emergency is declared;
- Declaring an emergency;
- Ensuring Provincial representatives and Emergency Management Ontario are advised of a declaration or termination of an emergency;
- Ensuring Council members are advised of the declaration and termination of an emergency;
- Ensuring Council members are informed of the emergency situation as per Corporate policy;
- Addressing elected officials concerns during an emergency; and,
- Declaring termination of the emergency.

5.2 CITY MANAGER

The City Manager is responsible for the following:

- Activating the C.C.G. notification system, when applicable;
- Chairing C.C.G. Policy Group meetings, determining the meeting cycle and agenda during emergencies or other meeting;
- Act as Chief Advisor to the Mayor on policies and procedures as appropriate;
- Ensuring a master event log is made recording all important decisions and actions taken by the C.C.G; and,
- Approving, in conjunction with the Mayor, major announcements and media releases prepared by Communications.

5.3 CITY CLERK

The City Clerk is responsible for the following:

- Assisting the EOC Director as required;
- Advising the C.C.G. in matters of: bylaws and protocols governing Council;
- Assist with administrative support to ensure appropriate documentation and reporting to Council;
- Recording emergency expenditures authorized by the C.C.G.;
- Maintain a record of requests made for Municipal, Provincial or Federal Government assistance in the emergency; and,
- Upon direction of the Mayor, arranging special meetings of Council; and advising Councillors of the time, date and location of the meetings.

5.4 CHIEF OF POLICE

The Chief of Police will have the following responsibilities in addition to the normal responsibilities of the Police Service:

- Activating the C.C.G. notification system, when applicable;
- Alerting persons endangered by the emergency and coordinating evacuation procedures;
- Depending on the nature of the emergency, providing the Emergency Site Incident Commander and inform the C.C.G.;
- Establishing an ongoing communications link with the Senior Police Official on scene;
- Where applicable, establish and/or secure the inner perimeter of the emergency scene;
- As feasible, provision of the police mobile command vehicle to service as the multi-agency command post;
- Where applicable, establish the outer perimeter in the vicinity of the emergency to facilitate the movement of evacuees, emergency vehicles and to restrict access to all but essential emergency personnel;
- Initiating traffic control to facilitate the movement of emergency vehicles and services;
- Arranging for additional police assistance when necessary;
- Evacuation of buildings or areas as authorized by the Mayor, or the immediate evacuation of residents from a building or area for urgent safety reasons on the decision of the Senior Police Officer on scene in consultation with Fire Services where appropriate, and notifying the C.C.G. or City Manager and the Managing Director, Neighbourhood, Children and Fire Services of such actions;
- Arranging for the maintenance of order in any emergency reception centre, morgue and other facilities established by the C.C.G.;
- Notifying the coroner of fatalities;
- Ensure the protection of life and property and the provision of law and order;
- Securing the emergency site to protect evidence so that subsequent investigation by other agencies is not hindered, for example an aircraft crash site; and,
- Liaising with other municipal, provincial and federal law enforcement/intelligence agencies as required. The Chief of Police will ensure that the O.P.P. Western Region Duty Officer is kept informed of any emergency situation in or affecting the City of London, so that current information on the emergency will be on hand at O.P.P. General Headquarters.

5.5 FIRE CHIEF

The Fire Chief and will have the following responsibilities in the emergency in addition to the normal responsibilities of the Fire Department:

- Activating the C.C.G. notification system, when applicable;
- Providing the C.C.G. with information and advice on firefighting and rescue matters;
- Depending on the nature of the emergency, providing the Emergency Site Incident Commander and informing the C.C.G.;
- Establishing an ongoing communications link with the Incident Commander on scene;

- Informing Mutual Aid Fire Chiefs and/or initiating mutual aid arrangements for the provision of additional firefighters and equipment, if needed;
- Determining if additional or special equipment or capabilities are required and recommending possible sources of supply, e.g. breathing apparatus, protective clothing;
- Determining the level and nature of Mutual Aid Fire assistance to provide to neighbouring communities when requested;
- Providing support to non-firefighting operations if necessary, e.g. rescue, casualty collection, evacuation;
- Maintaining plans and procedures for dealing with spills of hazardous material from the viewpoint of public safety, prevention of explosions and the spread of noxious fumes; and,
- Providing advice to other City Services as required in the emergency.

5.6 MANAGING DIRECTOR, ENVIRONMENTAL AND ENGINEERING SERVICES AND CITY ENGINEER

The Managing Director of Environmental and Engineering Services and City Engineer is responsible for the following:

- Activating the C.C.G. notification system, when applicable;
- Depending on the nature of the emergency, providing the Emergency Site Incident Commander and informing the C.C.G.;
- Establishing an ongoing communications link with the Senior Environmental and Engineering Services Official at the scene of the emergency;
- Liaising with public utilities to disconnect any services representing a hazard to the public and/or arranging for the provision of alternate services or functions;
- Maintaining procedures and plans for Engineering and Environmental Services response to spills of hazardous and environmentally damaging materials including containment, neutralizing and clean-up, upon advice from the Fire Department as to the material involved and the remedial action required;
- Maintaining communications with public works representatives from neighbouring communities to ensure a coordinated response;
- Ensuring provision of engineering assistance;
- Maintaining and repairing sanitary sewage and water systems;
- Providing emergency potable water, supplies and sanitation facilities as required by the Medical Officer of Health;
- Liaising with the Upper Thames River Conservation Authority regarding flood control, conservation and environmental matters;
- Maintaining flood plans including river watch in liaison with the Upper Thames River Conservation Authorities and the weather services, when required;
- Arranging for snow or building debris clearance on an emergency basis so that vehicle movement can be maintained;
- Developing and implementing a plan for the removal and disposal of debris;
- Arranging for procurement of special purpose vehicles/equipment not in City inventory;
- Obtaining advice from the Chief Building Official on the structural safety of any buildings affected by the emergency and take action as required under the Building Code Act.
- Arranging with London Police for building evacuation where appropriate;
- Arranging for the demolition of unsafe structures as required;

- Coordinating action for the recovery and restoration of services as outlined in the London Emergency Response Plan, including the inspection of homes and buildings for safe re-occupation where required;
- Arranging for repair of the water distribution system in case of ruptured mains in order to restore availability of water for fire-fighting purposes;
- Providing assistance to accomplish tasks as requested by the London Police to support evacuations; and,
- Arrange for the provision of forestry crews as required.

5.7 MANAGING DIRECTOR, NEIGHBOURHOOD, CHILDREN AND FIRE SERVICES

The Managing Director of Neighbourhood, Children and Fire Services is responsible for the following:

- Activating the C.C.G. notification system, when applicable;
- Ensuring the well-being of residents who have been evacuated from their homes by arranging emergency lodging, clothing, food, registration, inquiries and other personal services;
- Activation of the Emergency Social Services Plan;
- Coordinating the opening and operation of temporary and/or long-term reception/evacuation centres and ensuring adequate staffing;
- Liaising with the C.C.G. with respect to the designated reception/evacuation centres that can be opened on short notice;
- Liaising with the Medical Officer of Health on areas of mutual concern regarding operations in reception centres;
- Liaising with the Ministry of Community and Social Services;
- Liaising with volunteer organizations in regards to providing staff for registering the public in reception centres and providing clergy to the site;
- Notifying Western Fair and London school boards when their facilities are required as reception centres.

5.8 MEDICAL OFFICER OF HEALTH

The Medical Officer of Health will have the following responsibilities:

- Activating the C.C.G. notification system, when applicable;
- Acting as a coordinating link for all emergency health services at the C.C.G.;
- Liaising with the Ontario Ministry of Health and Long Term Care, Public Health Branch;
- Depending on the nature of the emergency, assigning the Emergency Site Incident Commander and informing the C.C.G.;
- Establishing an ongoing communications link with the senior health official at the scene of the emergency;
- Liaising with senior EMS representatives, hospital officials, relevant health care organizations (i.e. Southwest Local Health Integration Network, Community Care Access Centre, long term care facilities), the Ministry of Health and Long-Term Care and relevant government agencies;

- Providing authoritative instructions on health and safety matters to the public through Communications;
- Coordinating the response to disease related emergencies or anticipated emergencies such as epidemics, according to the Ministry of Health and Long-Term Care policies;
- Coordinating care of bed-ridden citizens and invalids at home and in reception centres during an emergency;
- Liaising with voluntary and private health care agencies, as required, for augmenting and coordinating public health resources;
- Coordinating efforts towards prevention and control of the spread of disease during an emergency;
- Notifying the Managing Director of Environmental and Engineering Services and City Engineer regarding the need for potable water supplies and sanitation facilities;
- Liaising with the Managing Director of Neighbourhood, Children and Fire Services on areas of mutual concern regarding health services in reception centres;
- Providing advice to the Mayor and the C.C.G. on health matters;
- When advised by emergency services of an emergency situation involving hazardous substances or any threat to public health, providing advice for the safety of emergency service workers and activities to reduce the adverse effects on the public health;
- Directing precautions in regard to food and water supplies when warranted;
- Arranging for mass immunization where required; and,
- Notifying other agencies and senior levels of government about health-related matters in the emergency.

5.9 MIDDLESEX-LONDON EMERGENCY MEDICAL SERVICES (EMS) CHIEF

The Middlesex-London EMS Chief is responsible for the following:

- Activating the C.C.G. notification system, when applicable;
- Providing information on patient care activities and casualty movement from the emergency site;
- Establishing an ongoing communications link with the EMS official at the scene of the emergency;
- Depending on the nature of the emergency, assigning the Emergency Site Incident Commander and informing the C.C.G.;
- Liaising and obtaining EMS resources from the Provincial Ministry of Health and Long-Term Care, Emergency Health Services, Ambulance Service Branch, Senior Field Manager or On Call Duty Manager and from other municipalities for support if required;
- Liaising with the Central Ambulance Communications Centre regarding patient status, destination, and department case load;
- Organizing the EMS response to assist and co-ordinate actions of other Social Service agency EMS branches (i.e. other first aid and transportation providers);
- Advising the C.C.G. if other means of transportation are required for large scale responses;
- Obtain EMS Mutual Aid assistance as required for both land and air based patient transport;
- Assist with the emergency evacuation when required;
- Ensure balanced emergency EMS coverage is available at all times throughout the community;

- Liaising with the receiving hospitals; and,
- Liaising with Police, Fire, Coroner and Medical Officer of Health, as required.

5.10 DIRECTOR, COMMUNICATIONS AND EMERGENCY INFORMATION OFFICER (EIO)

The Director of Communications (EIO) responsibilities include:

- Establishing a communications link with the Community Spokesperson and any other media coordinator(s) (i.e. provincial, federal, private industry, etc) involved in the incident;
- Implementing the Emergency Communications Plan;
- Ensuring that all information released to the public is timely, full and accurate;
- Ensuring an Emergency Information Centre is set up and staffed for the purpose of disseminating information to the media;
- Ensuring media releases are approved by the Mayor prior to dissemination;
- Handling inquiries from the public and media;
- Coordinating individual interviews and organizing press conferences;
- Ensuring a Public Inquiry Centre is set up (if necessary) to process email and/or phone inquiries;
- Ensuring a Public Inquiry Centre Supervisor is designated and to liaise often with this Supervisor regarding the nature of inquiries;
- Distributing hard copies of media releases to the C.C.G., Public Inquiry Centre Supervisor and other appropriate key persons;
- Ensuring the public is advised of the inquiry centre e-mail address and phone number(s) through public service media announcements;
- Monitoring news coverage and correcting any erroneous information;
- Maintaining copies of media releases pertaining to the emergency; and,
- Ensure information notification protocols for Elected Officials are exercised.

5.11 COMMUNITY EMERGENCY MANAGEMENT COORDINATOR (CEMC)

The Community Emergency Management Coordinator responsibilities include:

- Activating the C.C.G. notification system, when applicable;
- Ensuring the email lists and Blackberry PIN applications are utilized to supplement telephone call-out system;
- Providing advice and support to the Site Incident Commander and initial responders including liaison with appropriate agencies and departments;
- Assisting with the decision-making process to determine whether to activate the C.C.G. notification system when applicable;
- Preparing and arranging the Emergency Operations Centre in readiness to activate;
- Ensuring C.C.G. members have all plans, resources, supplies, maps and equipment;
- Ensuring that a communications link is established between the E.O.C. and Site;
- Providing communications support, and information on the emergency to the C.C.G.;
- Providing advice and clarification regarding the London Emergency Response Plan;
- Lead contact between the Municipality and Emergency Management Ontario;

- Liaising with Provincial and Federal agencies as required;
- Authorizing movement of the primary E.O.C. to the alternate E.O.C. location;
- Liaising with support agencies (i.e. Red Cross, St. John Ambulance, Salvation Army) as required;
- Addressing any action items that may result from the activation of the London Emergency Response Plan;
- Maintaining logs for the purpose of debriefings and post emergency reporting;
- Acting as an adviser, coordinator and/or liaison to the C.C.G. as required;
- Advising on the implementation of the City of London departmental emergency plans;
- Arranging the provision of administrative staff to assist in the E.O.C., as required;
- Maintaining plans in place, for the alternate E.O.C. at City Hall and alternate back up at London Police Headquarters, for use by the C.C.G.;
- Providing a process for registering C.C.G. members; and,
- Forwarding all Provincial Media releases to the Director of Communications.

5.12 HOSPITALS REPRESENTATIVE

London Hospitals' work collaboratively together on their Emergency Management programs. They would send a representative to attend the C.C.G. and provide direct liaison to the hospitals' control groups.

The Hospital Representative is responsible for the following:

- Providing information on patient care activities and casualty movement at the hospitals;
- Liaising with the Central Ambulance Communications Centre regarding patient status, destination, and department case load;
- Activating their emergency plans as appropriate;
- Establishing ongoing communications links with the hospital control groups;
- Liaising and obtaining hospital resources from the Provincial Ministry of Health and Long-Term Care, Emergency Health Services, Ambulance Service Branch, and from other hospitals for support if required;
- Ensure hospital services are available at all times throughout the community; and,
- Liaising with Police, Fire, Coroner and Medical Officer of Health, as required.

5.13 CHIEF EXECUTIVE OFFICER, LONDON HYDRO

The Chief Executive Officer, London Hydro Inc. responsibilities include:

- Activating the C.C.G. notification system, when applicable;
- Monitoring the status of power outages and customers without services;
- Providing updates to the C.C.G. on power outages, as required;
- Liaising with the Independent Electrical System Operators (IESO) regarding local and global power outage issues;
- Monitoring service status to inform customers relying on home medical equipment, (i.e. oxygen, dialysis machines);
- Providing assistance with accessing generators for essential services or other temporary power measures;

- Arranging to discontinue electrical services to any consumer where considered necessary in the interest of public safety;
- Maintaining plans in place for alternative electrical service, where necessary, and for the priority restoration of affected services as dictated by emergency needs of City services and other essential users;
- Arranging for the clearance of power lines and fallen trees on emergency routes in order that emergency response personnel have access to perform their duties;
- Establishing procedures and maintaining plans for emergency response to transformer oil leaks and for the co-ordination of response efforts by other departments and agencies in such situations; and,
- Assisting with post-disaster clean-up and restoration of services.

5.14 GENERAL MANAGER, LONDON TRANSIT

The General Manager, London Transit responsibilities include:

- Co-ordination of evacuation transportation resources;
- Responding as directed by London Police and/or the C.C.G. regarding the utilization of transportation resources under emergency evacuation conditions;
- Coordinating the acquisition, distribution and scheduling of various modes of transport (i.e. public transit, school buses, etc.) for the purpose of transporting persons and/or supplies, as required in an emergency;
- Procuring staff to assist with transportation issues, as required;
- Ensuring that a record is maintained of drivers and operators involved;
- Establishing an emergency availability system for all transportation vehicles according to time of day, excluding London Central Ambulance Communications Centre dispatched vehicles which will remain the responsibility of the L.C.A.C.C., and,
- Provide transportation support for on-site emergency responders as required.

6.0 RESPONSIBILITIES OF C.C.G. ADVISORY GROUP MEMBERS

6.1 MANAGING DIRECTOR, CORPORATE SERVICES AND CHIEF HUMAN RESOURCES OFFICER

The Managing Director, Corporate Services and Chief Human Resources Officer is responsible for the following:

- Assisting with providing necessary staff to help with emergency operations by matching employees' skills with required job (prior to an emergency). Obtaining, recording and maintaining an inventory of employee skills and limitations related to emergency operations, to be verified through the C.C.G. and support staff;
- Coordinating offers of, and appeals for, volunteers with the support of the Community Control Group. (This may include additional registration of volunteers for Emergency Reception Centres, telephone inquiry call in lines, recovery work parties, etc.);
- Coordination of staff information hotline and internal Corporation of the City of London communications in conjunction with Emergency Management;
- Ensuring safe workplace practices are followed and that appropriate safeguards are in place to protect staff and volunteers. Advising the C.C.G. on matters concerning Occupational Health and Safety legislation;
- Advising the C.C.G. on legislative and collective agreement aspects of the response. Make recommendations to ensure staff are fairly compensated for extra-ordinary efforts. Work with Union leadership to address any issues arising during the incident.
- Providing identification cards to staff, volunteers and temporary employees when required;
- Providing personal assistance to those employees who are impacted by the emergency. Establishing the necessary support services to allow employees to continue to report to work during the emergency (i.e. daycare, elder care, food services, rest areas, etc.);
- Recommendation to the C.C.G. on alternate work schedules, site, telecommuting, etc. in the event that City facilities are impacted;
- Ensuring that records of human resources and related administrative issues that cover financial liability are completed; and,
- Arranging Critical Incident Stress Debriefing Teams and employee counseling services to respond to the needs of municipal emergency response staff and registered volunteers, during and post emergency, as required.

Managing Director, Environmental & Engineering Services & City Engineer

6.2 MANAGING DIRECTOR, DEVELOPMENT AND COMPLIANCE SERVICES AND CHIEF BUILDING OFFICIAL

The Managing Director, Development and Compliance Services and Chief Building Official or alternate will:

- Where possible, inspect buildings for visual assessment of damage and advise if any dangerous or unsafe conditions exist; If necessary, retain or request the owner to retain

the services of a professionally qualified engineer to determine the structural adequacies of the structure;

- Issue Orders as necessary for remedial actions to be undertaken; and,
- Proceed with any actions as necessary to “make safe” any building or structure.

6.3 MANAGING DIRECTOR, CORPORATE SERVICES, CITY TREASURER AND CHIEF FINANCIAL OFFICER

The Managing Director, Corporate Services, City Treasurer and Chief Financial Officer responsibilities includes:

- Co-ordinate financial management at the emergency;
- Ensure necessary purchasing and stores support is available to support the incident;
- Assisting the EOC Director;
- Providing information and advice on financial matters related to the emergency; and,
- Ensuring that records of expenses are maintained for future claim procedure.

6.4 CHIEF TECHNOLOGY OFFICER

The Chief Technology Officer is responsible for the following:

- Providing information technology services personnel to assist with telecommunications, computer, LAN and GIS needs of the C.C.G.; and,
- Provide co-ordination with London Police IT services.

6.5 REGIONAL CORONER

When the Regional Coroner is called upon to join the C.C.G., the following responsibilities will be carried out:

- Providing information on the handling of fatalities;
- Liaising with London Police Service regarding victim identification and evidence gathering/preservation;
- Liaising with the Medical Officer of Health regarding associated health risks to emergency responders and the public;
- Arranging for adequate staffing to deal with the situation;
- Advising the Mayor/City Manager regarding information to be released to the media; and,
- Providing information with respect to the establishment of a temporary morgue.

6.6 THAMES VALLEY DISTRICT SCHOOL BOARD AND LONDON DISTRICT CATHOLIC SCHOOL BOARD

When the Boards of Education are called upon to join the C.C.G., they will provide liaison officer(s) who will have the following responsibilities:

- Provide the C.C.G. with information with respect to the Boards action to ensure the safety and well-being of their students;
- Providing school facilities (as appropriate and available) for use as public information and/or reception centres as required;
- Provide staffing to co-ordinate the maintenance, use, and operation of the facilities being used as public convergence/assembly and/or reception centres; and,
- Act as liaison between the Boards of Education to keep them informed of C.C.G. decisions that will impact the Boards activity.

6.7 OFFICE OF THE FIRE MARSHAL AND EMERGENCY MANAGEMENT

Office of the Fire Marshal and Emergency Management (OFMEM) can assist with facilitating access to Provincial and Federal agencies and resources. They can provide advice on managing an emergency and provide information and access to additional private and public agencies that may assist in the management of the emergency. Access to OFMEM is through the CEMC, who should notify the Provincial Emergency Operations Centre of all major incidents.

6.8 INCIDENT REPRESENTATIVE

When the emergency has been occurred at an industrial/business/institutional facility, the C.C.G. may request that the organization involved provide the C.C.G. with an advisor.

6.9 DND – REGIONAL LIASION OFFICER

A Canadian Armed Forces Liaison Officer will provide a link between the community and local Department of National Defence resources in London; including 31 Canadian Brigade Group and HMCS Prevost.

6.10 ADDITIONAL E.O.C. ADVISORS

Dependant upon the nature of the emergency, the C.C.G. may require further consultation from, but not limited to, the following internal and external agencies;

Internal

Legal Services

External

Ministry of the Environment
Ministry of Community and Social Services
Ministry of Municipal Affairs and Housing
Ministry of Health and Long-Term Care
Ontario Provincial Police
Ministry of Transportation
Upper Thames River Conservation Authority
Transport Canada
London International Airport
Canadian National/Canadian Pacific Railroad
Western University
Fanshawe College

7.0 OTHER AGENCIES AND ORGANIZATIONS

7.1 CENTRAL AMBULANCE COMMUNICATIONS CENTRE

The London Central Ambulance Communications Centre is responsible for the dispatch of ambulances in London and Middlesex County operating 24 hours per day, 7 days per week.

7.2 ST. JOHN AMBULANCE

The London – Middlesex Branch of the St. John Ambulance Community Services, with headquarters in London, has resources for communications, Incident Command Post, First Aid, emergency generators & lighting, mobile canteen services, search and rescue and emergency reception centre medical support. St. John Ambulance will respond to requests from the Emergency Services or the C.C.G. St. John Ambulance resources are staffed by volunteers and their response is governed by the availability for duty of volunteers. The resources can be accessed through the CEMC or Fire dispatch.

7.3 THE SALVATION ARMY

The Salvation Army has emergency resources for public welfare, short term accommodation, clothing, feeding, emergency responder critical incident stress issues, emergency reception centre support and will respond within their budgetary capabilities when requested by the C.C.G. The Salvation Army is also prepared to arrange for clergy assistance, emotional and spiritual care personnel at a disaster site or at reception centres when called upon by police or fire authorities or by the Managing Director of Neighbourhood, Children and Fire Services.

7.4 CANADIAN RED CROSS

The London and Middlesex Branch of the Canadian Red Cross is prepared to provide Red Cross assistance to the community in the form of a registration and inquiry service as described in the Health Canada's "Registration and Inquiry Manual". This service will assist the public in locating immediate relatives who have left their homes as a result of the emergency. Inquiry services may be operated from outside the disaster area in accordance with Red Cross standard operating procedures and may involve the assistance of the Amateur Radio Emergency Service. Registration and inquiry services will be provided at the request of the Managing Director of Neighbourhood, Children and Fire Services.

7.5 AMATEUR RADIO EMERGENCY SERVICE

The Amateur Radio Emergency Service (A.R.E.S.) is the volunteer group which co-ordinates amateur radio in the London-Middlesex area. They are prepared to establish emergency radio communications for any purpose required, including assisting Red Cross with registration and inquiry services, and to supplement municipal communications resources. Radio operators can deploy mobile and portable radios throughout the area to supplement existing radio networks.

An A.R.E.S. control station will be activated at the E.O.C. in a major emergency at the request of the Community Emergency Management Coordinator. Other stations are available at Middlesex-London Health Unit, London Fire Services, St. John Ambulance Communications Vehicle, and London Police Community Command Vehicle.

7.6 FEDERAL GOVERNMENT AGENCIES

Federal resource assistance should be accessed through Emergency Management Ontario. The financial burden for Federal resource assistance requests made directly from the municipality is born by the Municipality.

7.7 BELL CANADA

Bell Canada is aware of key emergency personnel and departments, and will ensure that these telephones are given priority attention in maintenance and restoration of service in emergency situations. Bell Canada can provide additional emergency telephone lines if the incident has not caused major disruption to their installed services.

7.8 UNION GAS

Union Gas Limited has emergency plans in place, personnel and equipment available to handle the restoration of gas mains and services in an emergency when contacted by City Emergency Services.

8.0 POPULATION EVACUATION

It may be necessary in an emergency for the residents of an area of the City to be temporarily evacuated from their homes for their own welfare and safety. Such a requirement may be of an urgent or short-notice nature caused by an immediate hazard, and decided upon and directed by Police in collaboration with Fire authorities. Police and Fire authorities will consider the advice of the Medical Officer of Health when deciding on the need for such immediate evacuation where health matters are involved. A less immediate, but probably larger scale evacuation could be decided upon and directed by the C.C.G., as in the case of an impending flood situation. The aim in any such operation will be to care for the evacuated persons, to bring families together, and to re-establish residents in their homes.

When the Police and/or Fire authority decides that an immediate and urgent evacuation is necessary, they will attempt to arrange for a nearby facility such as a community centre, shopping mall, or a school, to be utilized as a Reception Centre to provide essential needs to those adversely affected by the event.

The Emergency Site Incident Commander will notify the C.C.G. of the initial actions taken. When transportation beyond private vehicles is required to assist residents to move, the C.C.G. will request London Transit to provide buses for this purpose.

Further arrangements for the welfare of evacuees while accommodated at such a temporary shelter facility by City direction will be the responsibility of the Managing Director, Neighbourhood, Children and Fire Services, assisted by City Departments as necessary and by volunteer agencies noted here. When an urgent evacuation is considered necessary by the Medical Officer of Health, he will so advise the Mayor and the assistance of municipal essential service agencies will be made available.

In a situation where a less urgent, but major evacuation of an area is decided on by the C.C.G. or by the City Manager, co-ordination of measures to arrange for one or more suitable reception centres and for the welfare of evacuees will be the responsibility of the Managing Director of Housing and Community Services assisted by other municipal service and volunteer agencies. In the case where the City accepts a commitment to provide temporary shelter and welfare requirements for a group of evacuees from another community in Ontario, the C.C.G. will direct responsibilities of municipal agencies for management of the commitment.

9.0 PLAN DISTRIBUTION LIST

C.C.G. Membership

- Mayor
- City Manager
- City Clerk
- Chief of Police
- Fire Chief
- Managing Director, Environmental & Engineering Services & City Engineer
- Managing Director, Neighbourhood, Children & Fire Services
- Medical Officer of Health
- Chief, Middlesex-London Emergency Medical Services
- Director, Communications & Emergency Information Officer
- Community Emergency Management Coordinator
- Chief Executive Officer, London Hydro
- General Manager, London Transit
- London Health Sciences Centre (4 copies)
- St. Joseph's Health Care London (3 copies)

C.C.G. Advisory Group and Others

- Managing Director, Corporate Services & Chief Human Resources Officer
- Managing Director, Development & Compliance Services & Chief Building Official
- Managing Director, Corporate Services, City Treasurer & Chief Financial Officer
- Managing Director, Housing, Social Services and Dearness Home
- Chief Technology Officer
- Thames Valley District School Board
- London District Catholic School Board
- Upper Thames River Conservation Authority
- Emergency Operations Centre Room
- Middlesex County –CEMC and Administrator
- Western University Police
- Fanshawe College Emergency Management
- St. John Ambulance
- Canadian Red Cross
- The Salvation Army
- Emergency Management Ontario Field Officer – St. Clair Sector
- Amateur Radio Emergency Service (ARES) London
- London International Airport