

## Report to Civic Works Committee

**To:** Chair and Members  
Civic Works Committee

**From:** Kelly Scherr, P.Eng., MBA, FEC  
Deputy City Manager, Environment and Infrastructure

**Subject:** Appointment of Consulting Engineer for Contract  
Administration Services and CP Rail Flagging Fees: Hyde  
Park Assignment 'A' - Phase 2 Project

**Date:** July 16, 2024

## Recommendation

That on the recommendation of Deputy City Manager, Environment and Infrastructure, the following actions **BE TAKEN** with respect to the appointment of consulting engineers for contract administration services for the Hyde Park Assignment 'A' - Phase 2 Stormwater Infrastructure construction project:

- (a) Stantec Consulting Limited, **BE AUTHORIZED** to carry out the resident inspection and contract administration for the Hyde Park Assignment 'A' Phase 2 project in accordance with the estimate, on file, at an upset amount of \$243,764.00, including contingency, excluding HST, in accordance with Section 15.2 (g) of the City of London's Procurement of Goods and Services Policy;
- (b) the allowance of the mandated Canadian Pacific Railway (CP) flagging personnel during the construction of the Hyde Park Assignment 'A' - Phase 2 tunnel works per the anticipated CP flagging requirements **BE APPROVED** for the Hyde Park Assignment 'A' - Phase 2 project, with an estimated fee of \$52,034, excluding HST;
- (c) the financing for this project **BE APPROVED** as set out in the Sources of Financing Report attached, hereto, as Appendix 'A';
- (d) the Civic Administration **BE AUTHORIZED** to undertake all the administrative acts that are necessary in connection with this project;
- (e) the approval given, herein, **BE CONDITIONAL** upon the Corporation entering into a formal contract; and,
- (f) the Mayor and City Clerk **BE AUTHORIZED** to execute any contract or other documents, if required, to give effect to these recommendations.

## Executive Summary

Stantec Consulting Limited worked with city staff to complete the challenging Hyde Park stormwater infrastructure lifecycle replacement needs in response to climate change and to accommodate development growth within the City. This project is the second phase of the original Hyde Park Assignment 'A' design awarded to Stantec Consulting Limited.

## Linkage to the Corporate Strategic Plan

This recommendation supports the following 2023-2027 Strategic Plan areas of focus:

- Climate Action and Sustainable Growth:
  - Waterways, wetlands, watersheds, and natural areas are protected and enhanced.
  - London is more resilient and better prepared for the impacts of a changing climate; and
  - Infrastructure is built, maintained, and secured to support future growth and protect the environment.

# Analysis

## 2.1 Background Information

### 1.1 Previous Reports Related to this Matter

- CWC – June 13, 2023 – Appointment of Consulting Engineers for Contract Administration Services: Stormwater Infrastructure and Channel Remediation Projects.
- CWC – August 31, 2021 – Appointment of Consulting Engineer for the Hyde Park EA SWM Works – Assignment ‘A’ Detailed Design

## 2.0 Discussion and Considerations

### 2.1 Work Description – Hyde Park EA Works Assignment ‘A’ – Phase 2

Stantec’s original assignment included the detailed design of several components of the stormwater management (SWM) works recommended by the Hyde Park EA Addendum as follows:

1. Hyde Park SWM 1 Retrofit within existing block.
2. Hyde Park SWM 1B1 Retrofit within existing block.
3. Trenchless design of a new storm culvert under the Canadian Pacific (CP) Rail line, and a new storm channel south of the CP Rail into a new inlet into Hyde Park SWM facility 1B1.
4. Decommissioning of the temporary Matthews Hall Subdivision SWM Facility.

Due to ongoing land acquisition negotiations and CP Rail tunnel crossing approvals, the above noted work was separated into two project tenders. Phase 1 tender consisted of item #1 which was constructed in 2023. In June 2024, items #2-4 were tendered for construction following receipt of the CP Rail agreement and the necessary land acquisition. The location map of these projects is provided in Appendix ‘B’.

Stantec’s original design assignment did not anticipate the separation of this project into two separate tender phases and thus, additional contract administration fees are required to facilitate the resident inspection and contract administration of Phase 2.

All work was designed and will be constructed in accordance with the mitigation and compensation plan identified in the Environmental Impact Study (EIS) and additional features identified through this detailed design.

Phase 2 construction tender will be awarded through the Administrative Approval of Tender Acceptance/Contract Award (AATACA) process.

## 3.0 Financial Impact/Considerations

### 3.1 CP Rail Flagging Requirements

In accordance with the Canadian Pacific Railway (CP) agreement with the City, it is mandated that CP flagging personnel be present at all times when work progresses within the CP right-of-way, unless otherwise approved by CP. A conservative estimate of \$52,034 (excluding HST) has been identified for this project.

### 3.2 Consulting Engineer Services

In accordance with Section 15.2 (g) of the City of London’s Procurement of Goods and Services Policy, Civic Administration recommends that the engineering services associated with the resident inspection and contract administration services be awarded to ensure that the City receives the product specified and associated value.

Due to the knowledge and positive performance on the detailed design assignments, Stantec Consulting Limited was invited to submit a proposal to carry out the resident inspection and contract administration for their project.

Staff have reviewed the fee submissions, including hourly rates and the time allocated to each project task, as provided by Stantec Consulting Limited. The submission was found to be consistent with other project assignments of similar scope. The continued use of the identified consultant for resident inspection and contract administration is of financial advantage to the City because the firm has specific knowledge of the project and has undertaken work for which duplication would be required if another firm were to be selected.

In addition to the financial advantage, there are also accountability and risk reduction benefits. The City requires a Professional Engineer to seal all construction drawings. These 'record drawings' are created based on field verification and ongoing involvement by the Professional Engineer. This requirement promotes consultant accountability for the design of these projects, and correspondingly, reduces the City's overall risk exposure. Consequently, the continued use of the consultant who created and sealed the design drawings is required in order to maintain this accountability process and to manage risk.

Funds have been budgeted in the Stormwater capital budgets to support the recommended award, as identified in Appendix 'A' - Sources of Financing.

## **Conclusion**

Replacing infrastructure at the end of its lifecycle and rehabilitating existing stormwater infrastructure is essential to building a sustainable city and to adapt to climate change for the future. The recommended engineering consultant assignment will allow the construction project to be completed in the best financial and technical interests of the City. It is recommended that Stantec Consulting Limited continue as the consulting engineer for the purpose of resident inspection and contract administration services.

**Prepared by:** **Shawna Chambers, P.Eng., DPA**  
**Division Manager, Stormwater Engineering**

**Submitted by:** **Ashley Rammeloo, MMSc, P.Eng.**  
**Director, Water, Wastewater, and Stormwater**

**Recommended by:** **Kelly Scherr, P.Eng., MBA, FEC**  
**Deputy City Manager, Environment and Infrastructure**

cc: Gary MacDonald  
Alan Dunbar  
Jason Davies  
Paul Titus

Appendix 'A' – Sources of Financing

Appendix 'B' – Location Map

## Appendix "A"

#24137

July 16, 2024

(Appoint Consulting Engineer)

Chair and Members

Civic Works Committee

RE: Contract Administration Services and CP Rail Flagging Fees: Hyde Park Assignment 'A' - Phase 2 Project  
(Subledger SWM24003)

Capital Project ESSWM-HP5 - SWM Facility - Hyde Park No 5

Stantec Consulting Limited - \$243,764.00 (excluding HST)

Canadian Pacific Railway (CP) - \$52,034.00 (excluding HST)

### Finance Supports Report on the Sources of Financing:

Finance Supports confirms that the cost of this project can be accommodated within the financing available for it in the Capital Budget and that, subject to the approval of the recommendation of the Deputy City Manager, Environment and Infrastructure, the detailed source of financing is:

Estimated Expenditures	Approved Budget	Committed To This Date	Submission	Balance for Future Work
Engineering	2,134,000	769,622	0	1,364,378
Land Acquisition	444,700	206,014	0	238,686
Construction	7,068,978	2,488,510	301,004	4,279,464
City Related Expenses	70,022	70,022	0	0
<b>Total Expenditures</b>	<b>\$9,717,700</b>	<b>\$3,534,168</b>	<b>\$301,004</b>	<b>\$5,882,528</b>

### Sources of Financing

Debenture By-law No. W.-5560-200	142,218	0	0	142,218
Drawdown from Sewage Works Renewal Reserve Fund	289,667	157,069	13,378	119,220
Drawdown from City Services - Stormwater Reserve Fund (Development Charges) (Note 1)	9,285,815	3,377,099	287,626	5,621,090
<b>Total Financing</b>	<b>\$9,717,700</b>	<b>\$3,534,168</b>	<b>\$301,004</b>	<b>\$5,882,528</b>

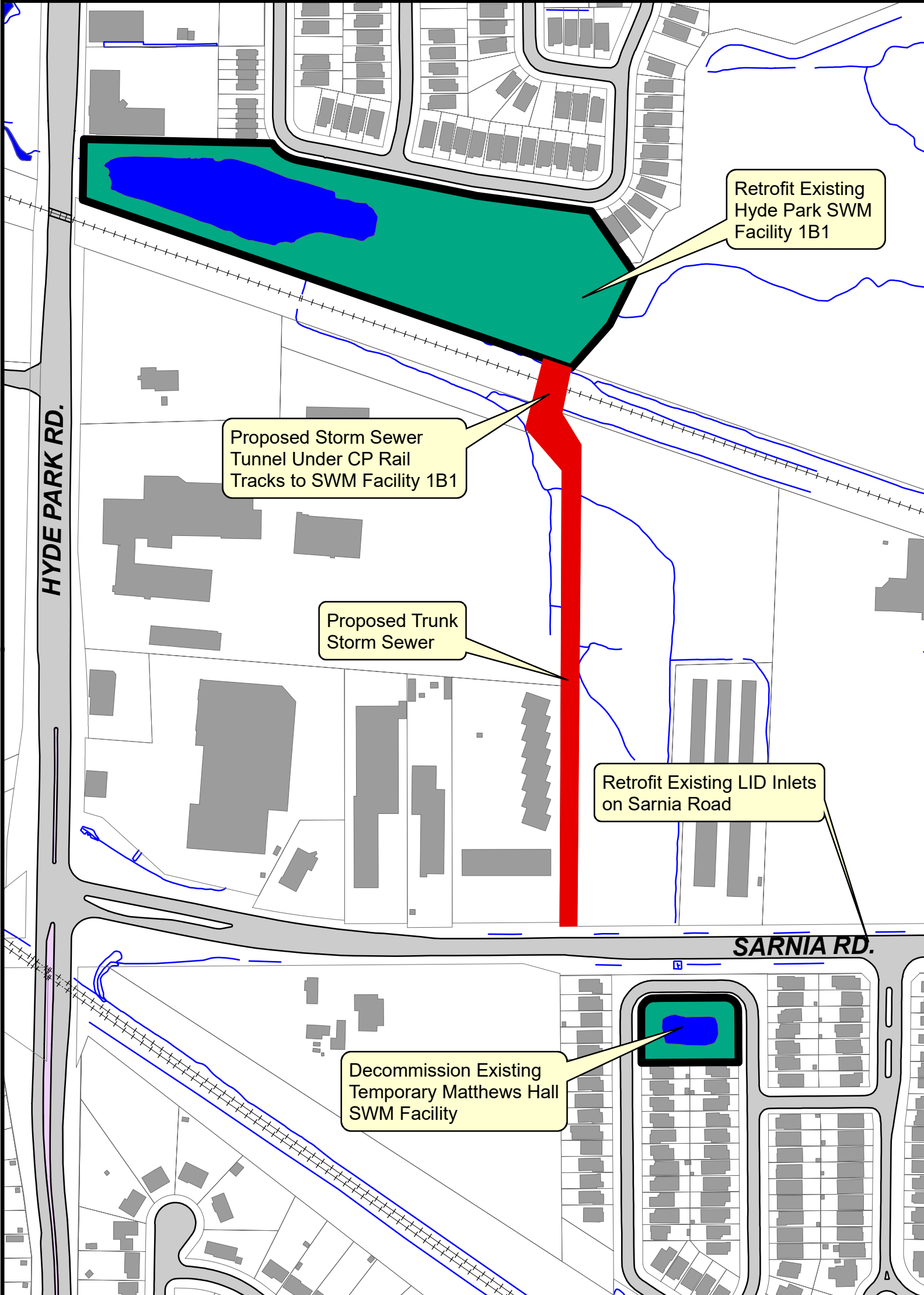
### Financial Note:

	Stantec - ESSWM-HP5	CP Rail - ESSWM-HP5	Total
Contract Price	\$243,764	\$52,034	\$295,798
Add: HST @13%	31,689	6,765	38,454
Total Contract Price Including Taxes	275,453	58,799	\$334,252
Less: HST Rebate	-27,399	-5,849	-33,248
Net Contract Price	\$248,054	\$52,950	\$301,004

**Note 1:** Development charges have been utilized in accordance with the underlying legislation and the approved 2019 Development Charges Background Study and the 2021 Development Charges Background Study Update.

Jason Davies  
Manager of Financial Planning & Policy

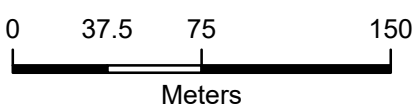
ah









**PROJECT LOCATION MAP - APPENDIX 'B'**



1:3,000



**Legend**

-  Existing SWM Facilities
-  Trunk Storm Sewer and Tunnel Alignment/Location
-  Land Parcel
-  Road
-  Railroad
-  Water Body

Map Produced by  
the Stormwater  
Engineering Division

300 Dufferin Avenue,  
PO Box 5035  
London, Ontario  
N6A 4L9  
www.London.ca

