

Bill No. 222  
2024

By-law No. S.- \_\_\_\_ - \_\_\_\_

A by-law to assume certain works and services  
in the City of London. (Hajjar Subdivision, Plan  
33M-732)

WHEREAS the Deputy City Manager, Environment and Infrastructure of  
The Corporation of the City of London has reported that works and services have been  
constructed to their satisfaction in Hajjar Subdivision, Plan 33M-732;

AND WHEREAS it is deemed expedient to assume the said works and  
services;

NOW THEREFORE the Municipal Council of The Corporation of the City  
of London enacts as follows:

1. The Corporation of the City of London assumes the following works and  
services, namely:

Hajjar Subdivision, Plan 33M-732  
Sifton Properties Ltd.  
*Daisy Bend – All;*  
*Oriole Drive – All;*  
*Charlie Hajjar Way – All;*  
*Block 112 – Park Block;*  
*Block 113 – Walkway;*  
*Commissioners Road East – external works;*  
*Hamilton Road – external works*

2. The warranty period for the works and services in the subdivision referred  
to in Section 1 of this by-law will commence for a duration of one calendar year from  
June 3, 2024.

3. This by-law comes into force and effect on the day it is passed subject to  
the provisions of PART VI.1 of the *Municipal Act*, 2001.

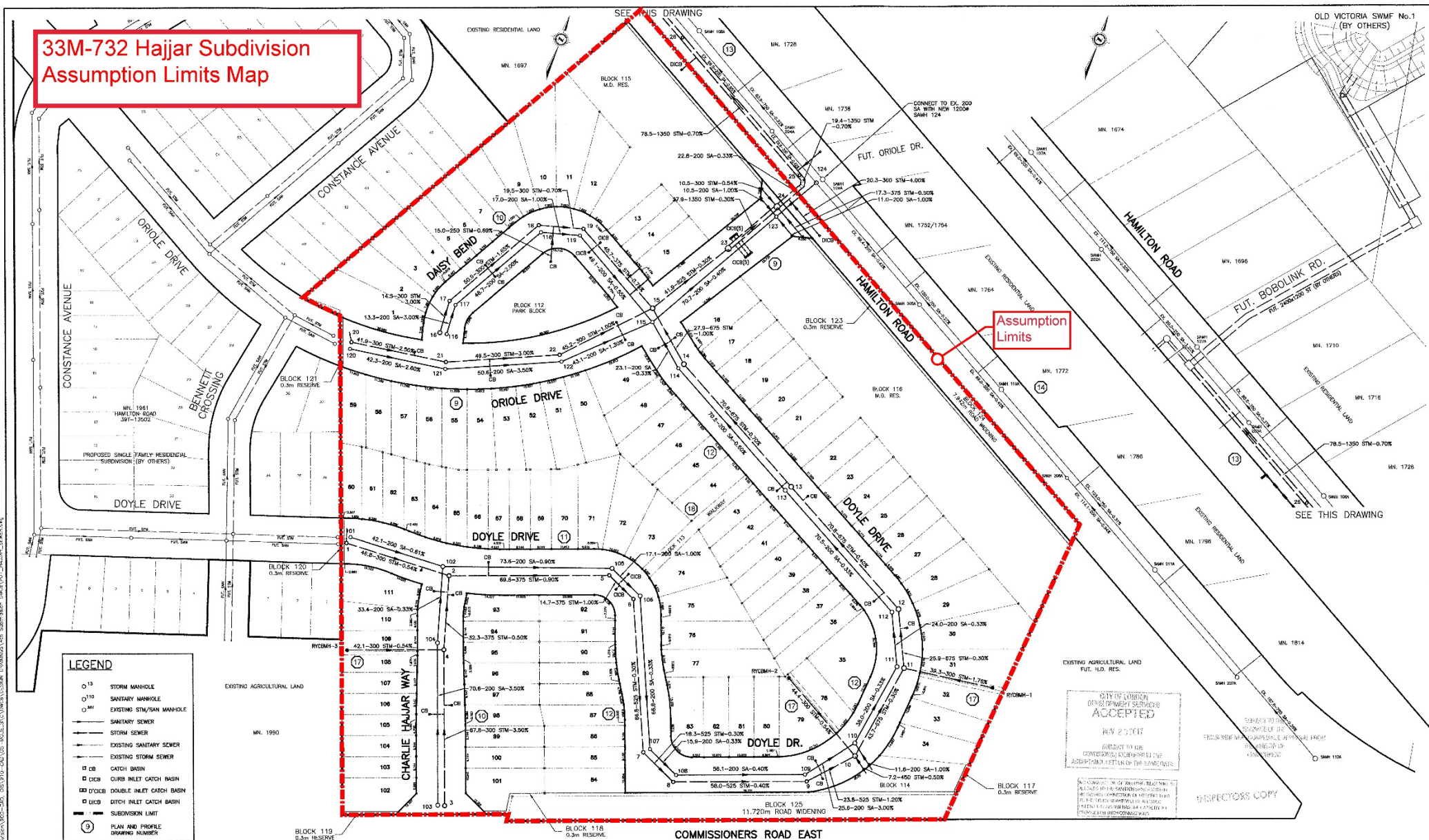
PASSED in Open Council on June 25, 2024 subject to the provisions of  
PART VI.1 of the *Municipal Act*, 2001.

Josh Morgan  
Mayor

Michael Schulthess  
City Clerk

First Reading – June 25, 2024  
Second Reading – June 25, 2024  
Third Reading – June 25, 2024

# 33M-732 Hajjar Subdivision Assumption Limits Map



**LEGEND**

- 15 STORM MANHOLE
- 110 SANITARY MANHOLE
- 300 EXISTING STIM/SAN MANHOLE
- SANITARY SEWER
- STORM SEWER
- EXISTING SANITARY SEWER
- EXISTING STORM SEWER
- ▣ CB CATCH BASIN
- ▣ CIB CURB INLET CATCH BASIN
- ▣ D/CIB DOUBLE INLET CATCH BASIN
- ▣ D/CIB DITCH INLET CATCH BASIN
- SUBDIVISION LIMIT
- ⑨ PLAN AND PROFILE DRAWING NUMBER

CITY OF LONDON  
DEVELOPMENT SERVICES  
ACCEPTED  
REV 2017  
SUBJECT TO THE  
CONDITIONS OUTLINED IN THE  
APPROPRIATE LETTER OF THE SAME DATE

EXISTING SERVICES	DRAWING #, SOURCE	DATE	AS CONSTRUCTED SERVICES	COMPLETION	DETAILS	NO.	REVISIONS	DATE	CONSULTANT	CONSULTANT OR ENGINEER
					DESIGN	1	1st SUBMISSION REVIEW	APRIL 11, 2017	AECOM	<small>THIS DRAWING HAS BEEN PREPARED FOR USE BY ANYONE'S CLIENT AND MAY NOT BE LOANED, REPRODUCED OR COPIED, EITHER WHOLLY OR PARTIALLY, WITHOUT THE WRITTEN PERMISSION OF THE CLIENT. THE CLIENT IS RESPONSIBLE FOR THE ACCURACY OF THE INFORMATION PROVIDED AND FOR OBTAINING ALL NECESSARY PERMITS AND APPROVALS. THE CONSULTANT ACCEPTS NO RESPONSIBILITY FOR ANY ERRORS OR OMISSIONS IN THIS DRAWING. THE CLIENT'S USE OF THIS DRAWING IS LIMITED TO THE PROJECT AND SITE SPECIFICALLY IDENTIFIED IN THE TITLE BLOCK. ALL MEASUREMENTS MUST BE OBTAINED FROM STATED DIMENSIONS.</small>
					DESIGN	2	REVISION AS PER CHL COMMENTS	JULY 12, 2017	AECOM	
					DESIGN	3	REVISION AS PER CHL COMMENTS	NOV 15, 2017	AECOM	
					DESIGN	4	REVISION AS PER CHL COMMENTS	SEP 26, 2017	AECOM	
					DESIGN	5	REVISION AS PER CHL COMMENTS	OCT 18, 2017	AECOM	
					DESIGN	6	REVISION AS PER CHL COMMENTS	NOV 14, 2017	AECOM	



SCALE - 1:1,250  
1" = 6' 10"

HAJJAR SUBDIVISION  
SIFTON PROPERTIES LIMITED  
SEWER AREA PLAN

PROJECT No. 60512435  
SHEET No. 1  
PLAN FILE No.