

PROPOSED PLAN FOR PATHWAYS FROM ENCAMPMENTS TO HOUSING

Part of the Health and Homelessness
Whole of Community System Response

Chantelle McDonald, Director of Service, London Cares

Greg Nash, Director, Complex Urban Health, London InterCommunity Health Centre



**HEALTH +
HOMELESSNESS**
WHOLE OF COMMUNITY
SYSTEM RESPONSE



UNSHELTERED HOMELESSNESS IN LONDON

- London, like many cities in Canada, is facing a health and homelessness crisis.
- Demand for supportive and affordable housing continues to outpace supply.
- Encampments are typically home to our community's most vulnerable, high needs individuals, who haven't been able to secure permanent housing.
- This plan is intended to find ways to support these individuals – right now, and in the longer term – so that they can live indoors and access the help they need.





WHOLE OF COMMUNITY SYSTEM RESPONSE

Last year we came together as a community and developed the Health & Homelessness

Whole of Community System Response to:

- Help Londoners with the highest needs move safely inside
- Help them get stabilized
- Wrap around them with supports
- Connect them to the right type of housing
- Help them stay housed

Strategies to achieve this are:

- **Hubs Implementation Plan** – endorsed by Council in July 2023
- **Highly Supportive Housing Plan** – endorsed by Council in April 2024
- › **Pathways from Encampments to Housing Plan** - Council to review in June 2024



WHAT IS THE PLAN FOR PATHWAYS FROM ENCAMPMENTS TO HOUSING ALL ABOUT?



- A plan to help individuals within encampments with tailed support to move into stable and safe indoor spaces, whether it's a shelter, a hub, or highly supportive housing
- A comprehensive strategy to address immediate needs, while planning for a future in which encampments are no longer needed
- Supports previous plans for Hubs and Highly Supportive Housing





WHAT IS THE PLAN FOR PATHWAYS FROM ENCAMPMENTS TO HOUSING ALL ABOUT?

Focuses on three main components:

- **Transformational Outreach**
- **Transactional Outreach**
- **Encampment protocols** to promote safety for people living in encampments as well as neighbours





TRANSFORMATIONAL OUTREACH

Helping individuals with complex needs by:

- Providing case management
- Supporting access to services and navigation of larger system within London so they can move out of encampments and into shelters, hubs, or highly supportive housing.

EVERY INTERACTION IS AN ACTIVE AND INTENTIONAL EFFORT TO MEET PEOPLE WHERE THEY'RE AT, SUPPORTING AN INDIVIDUAL'S STEPS TOWARD HOUSING.



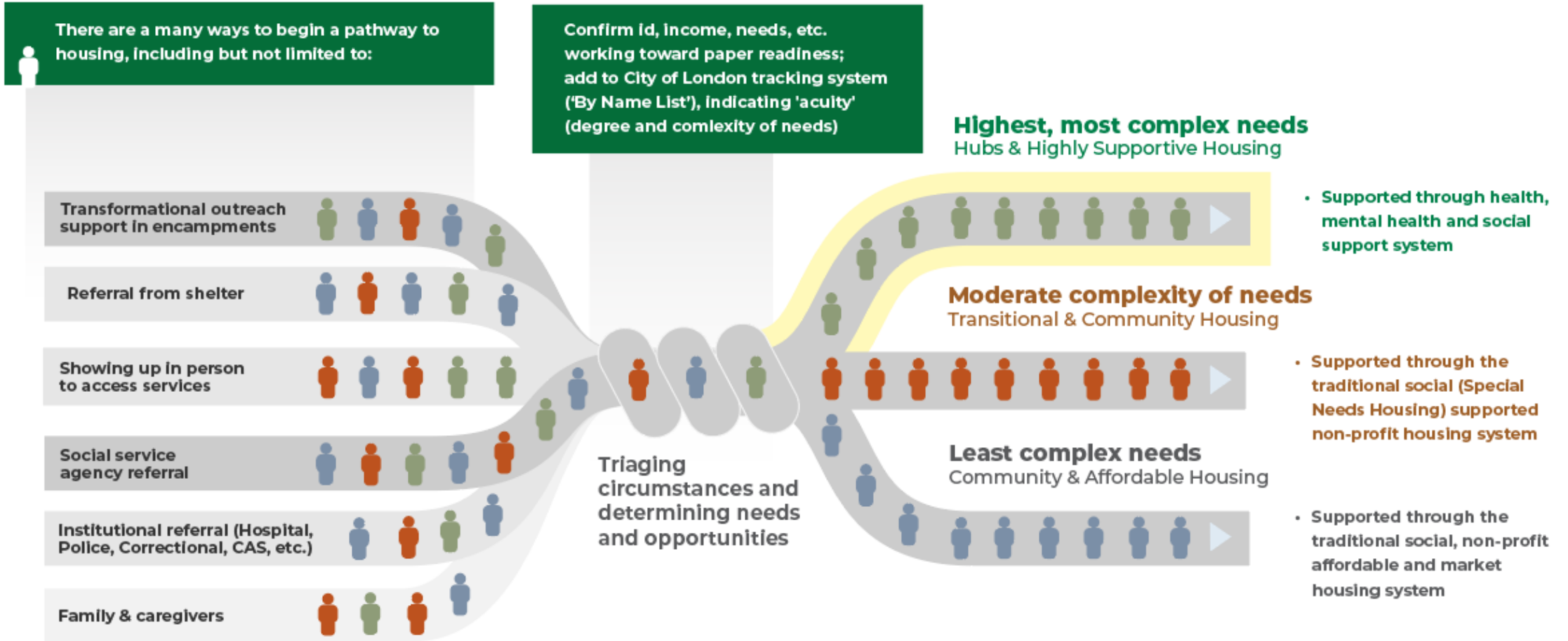


HOUSING SPECTRUM IN LONDON





PATHWAYS TO HOUSING



The term 'acuity' defines how marginalized a given person is. High acuity refers to those whose social and personal conditions are severe. This can include physical health, mental health, substance use health and/or deprivation of basic needs like food, water, housing, or systemic barriers to accessing services.





TRANSACTIONAL OUTREACH

- Primarily involves street outreach organizations engaging briefly with people in living encampments for wellness checks, harm reduction support where applicable, and to provide essential items such as **food, water, personal supplies and other basic human rights.**
- Provided across London today by various outreach workers and organizations.

ROOTED IN A HUMAN RIGHTS APPROACH





ENCAMPMENT SAFETY PROTOCOLS

ENCAMPMENT SAFETY

Human Trafficking:

- Human trafficking or any illegal associated activity is not tolerated. Any evidence of human trafficking observed within the encampment, will be reported.



Pets:

- Pets must be on a leash when outside a tent/structure.
- A muzzle is required if the pet is known to be violent.



Underage individuals:

- No minors (under 16) are to be permitted to reside in the encampment. If minors are observed residing in the camp, they are to be reported to CAS.



Violence/threats:

- Intimidation, physical violence, or threats of physical violence towards neighboring tents, community residents, or staff providing services will not be tolerated.



Fires:

- No open burn fires, compressed gas cylinders, gasoline containers or explosives are permitted in camps.



Camp Capacity:

- Structures must be free standing and not attached to anything. No fortification will be permitted



Weapons:

- Brandishing weapons or firearms towards other neighboring tents, community residents, or staff providing services will not be tolerated.



Cleanliness:

- No used, uncapped needles in or around the site. Sharps containers must be used for disposal.
- No large amounts of garbage, food remains or evidence of hoarding.



Location of Camp:

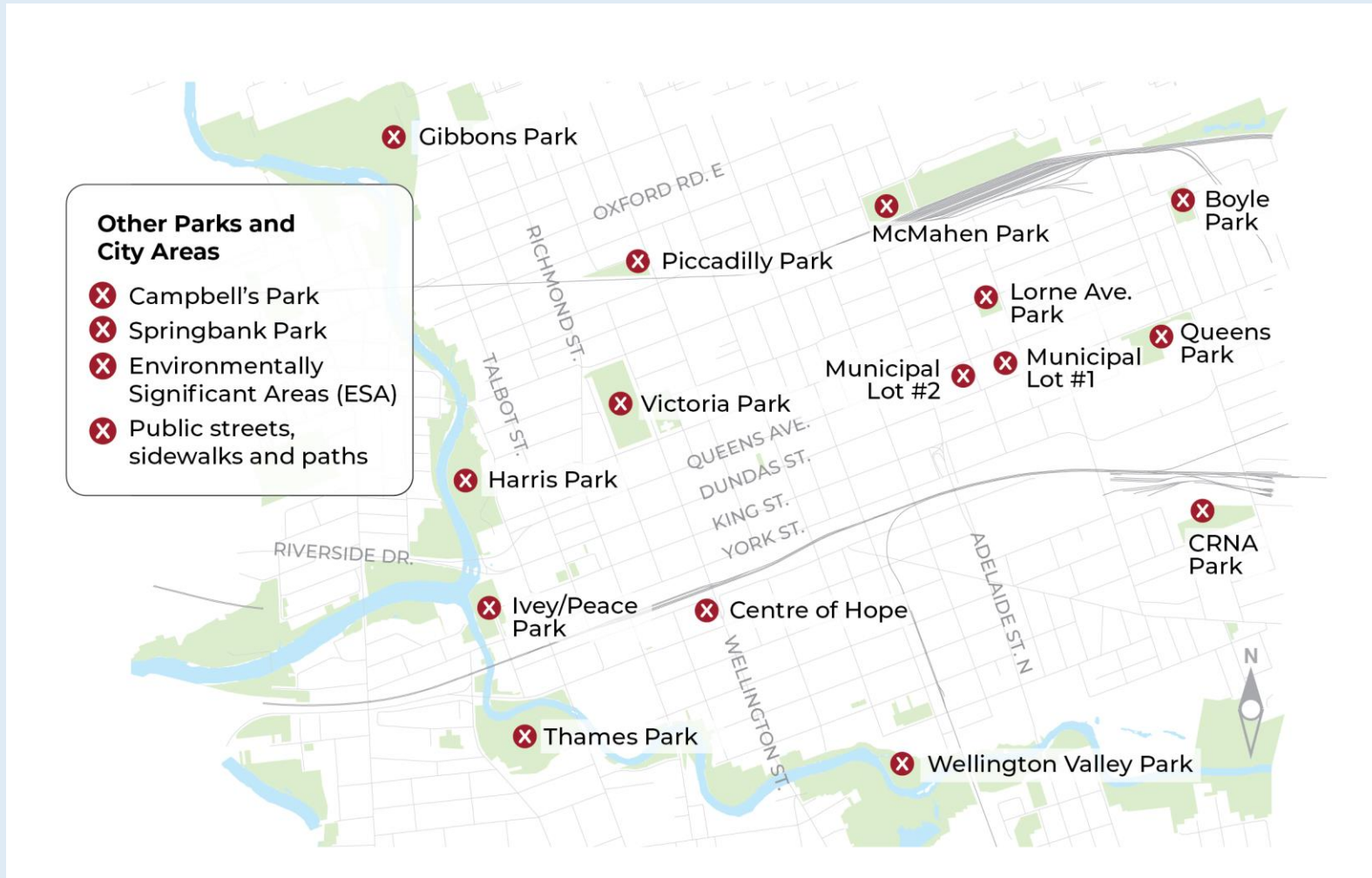
- Tents cannot be located near a playground, pathway, open area of play, or on a flood plain, river embankments, roadways, private property, side walks or bus shelters.





ENCAMPMENT PROTOCOLS

Locations where encampments are not permitted



THANK YOU



**HEALTH +
HOMELESSNESS**
WHOLE OF COMMUNITY
SYSTEM RESPONSE