

To: Environmental Stewardship and Action Community Advisory Committee

From: Sandy Levin, Chair, Ecological Community Advisory Committee Chair

At a recent meeting of our committee, we briefly discussed the [Tree Protection By-Law](#). Staff indicated that the matters discussed should be referred to your committee for consideration. I am raising them directly with you through your Chair.

This document has two parts, describing two related issues:

1. Violations of the by law that occur without consequence (i.e., lack of enforcement)
2. Discrepancies between the map schedules referenced in the by law, and the London Plan

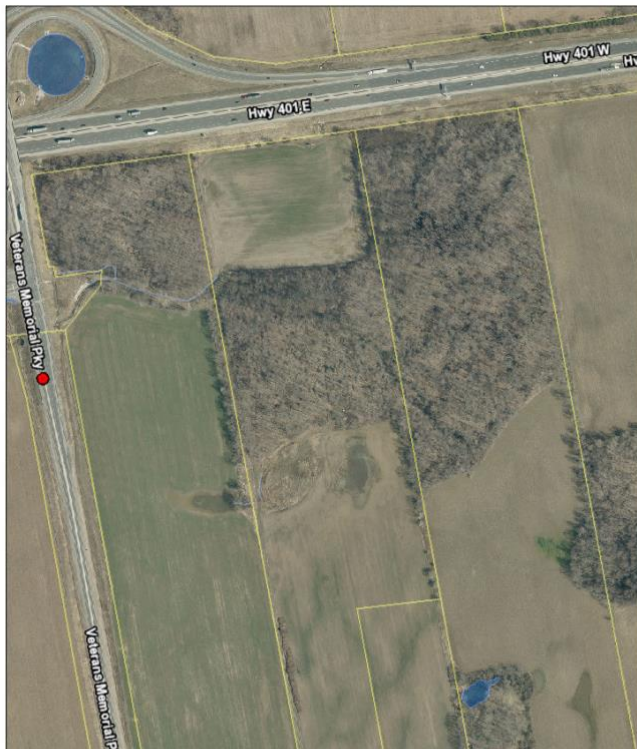
It is hoped that your committee will review these matters and make recommendations.

### PART 1 – VIOLATION OF BY LAW

The Significant Woodland located at approximately 42.941566, -81.121247 (southeast of Veterans Memorial Parkway and Highway 401) was cut between 2022 and 2023 without a permit. Apparently the by law does not provide the City with the ability to enforce this unauthorized cutting. What changes are required so that enforcement can take place when cutting is detected? The current practice has a timing window for receiving complaints (21 days after a by-law violation) that seems too short for effective enforcement. It can be difficult to detect violations in a timely manner. In this example, it appears the violation was hidden behind a row of trees left on the west side of the property and by only "coring" the section to the east. Therefore, there may be a gap in the ability of the bylaw to deter violators.

Image from 2022

London City Map



2024-02-21, 4:46:43 p.m.

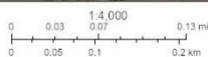
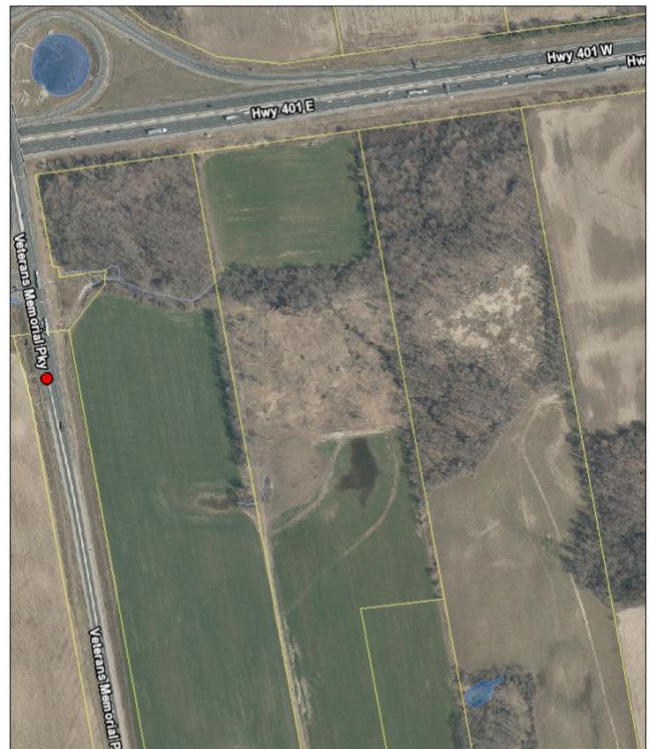
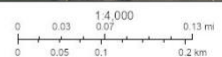


Image from 2023

London City Map



2024-02-21, 4:47:57 p.m.



The area shown in the dotted circle below is where trees have been removed from a designated Tree Protection Area according to the [Key Map for Section B-16](#) under Schedule B of the Tree Protection By-law.



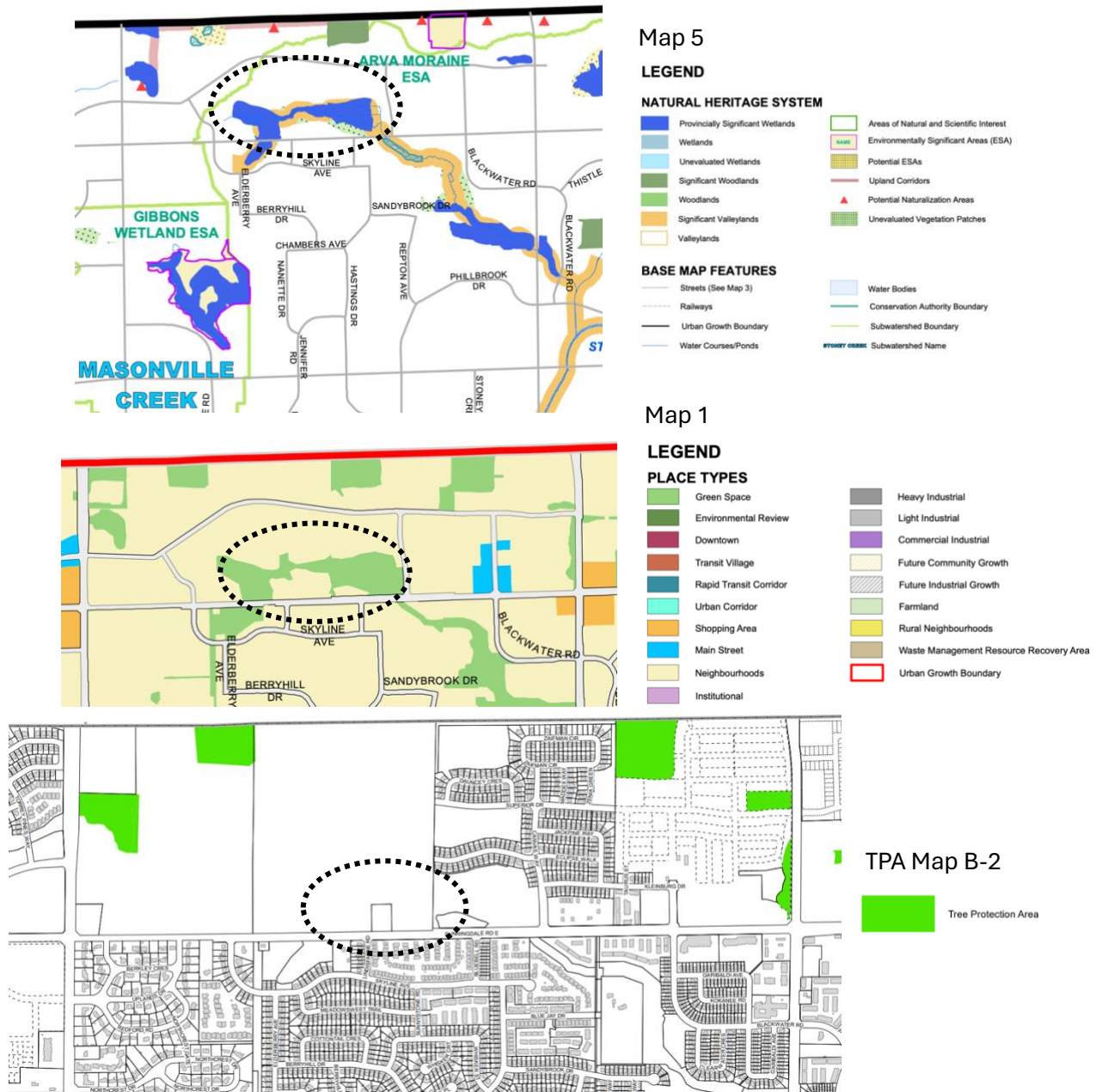
**Questions for staff:**

1. Why wasn't the Tree Protection By-law enforced in this case?
2. Why are only 21 days following a by-law violation allowed for complaints to be submitted?

## PART 2 – MAPPING INCONSISTENCIES

Map 5 of the London Plan shows the Natural Heritage System. It would be expected that all parts of the Natural Heritage System shown on Map 1 (Place Types) and Map 5 would be included in maps of Tree Protection Areas. The following is an example of where that is not the case. It is suspected that there are other such examples across the City.

A wetland north of Skyline Avenue is marked in the dotted circle. It appears in Map 5 and Map 1 but it does not appear on the Tree Protection Area Key Map for section B-2.



### Questions for staff:

1. Why are there discrepancies between the Tree Protection Area and Map 5 and Map 1 of the London Plan? How can these discrepancies be identified and corrected?