



Environment & Infrastructure Services TVP Closure: Greenway Flood Protection



Integrated Transportation Community Advisory Committee

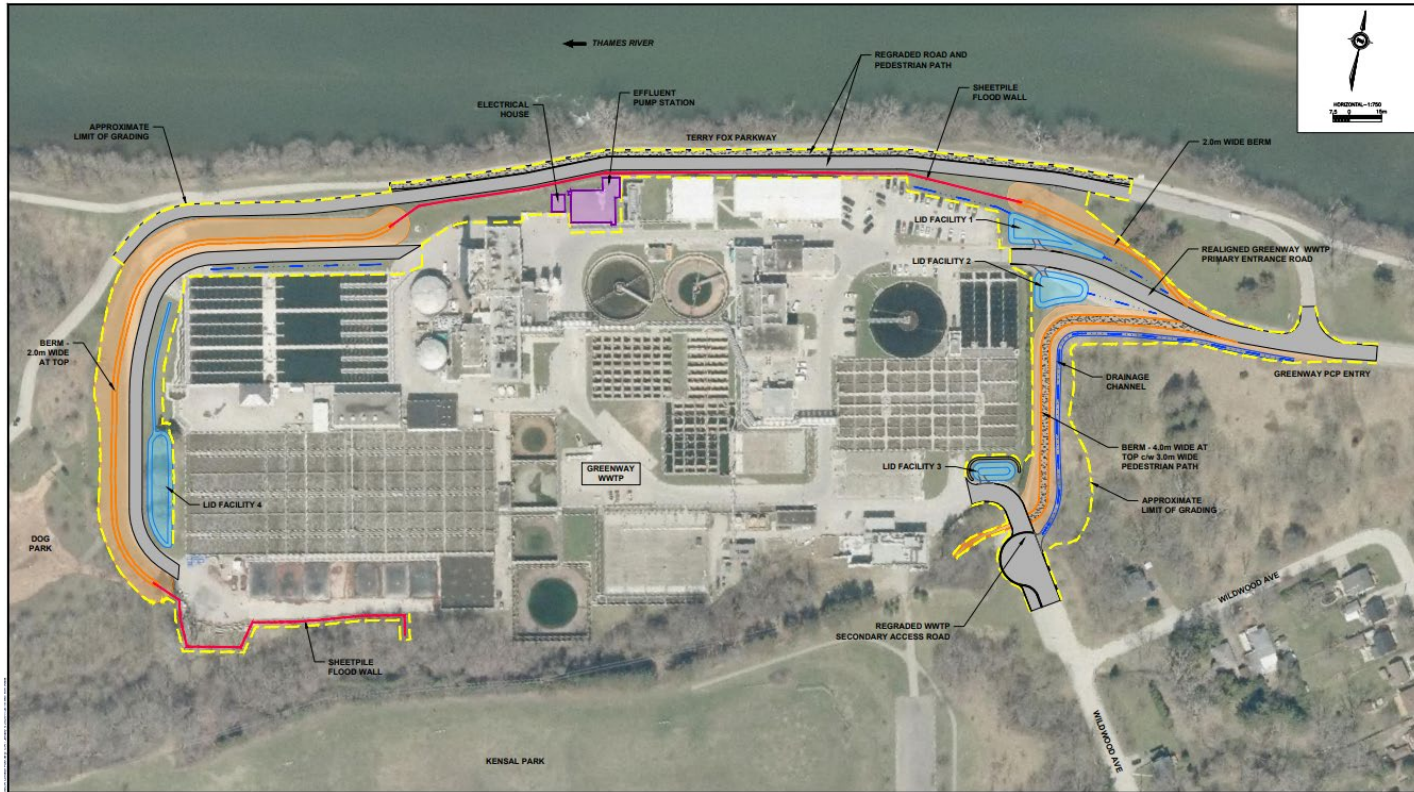
May 15, 2024

Why Protect WWTPs From Flooding?

- Significant investment - \$500M
- Critical role in protecting human health and the environment
- Gravity sewers require treatment plants be built as low as possible



Greenway WWTP Flood Protection



Thames Valley Parkway Closure

- Unavoidable due to space required for large equipment.
- Closure limited to 2 months during the winter
 - Start after November 1
 - Complete by March 6
- Terry Fox Parkway
 - Closure could be 3 months
- Contract structured to incentivize early completion and penalize late



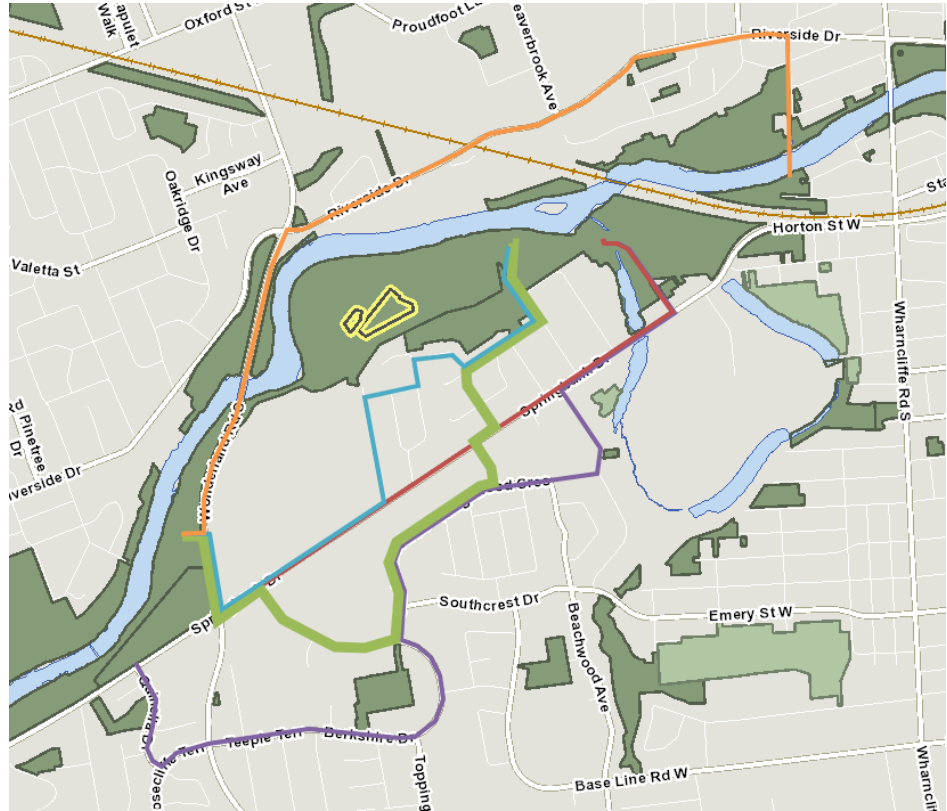
Proposed Detour Route

- Primarily effected through wayfinding signs
- Combination of on-road and shared sidewalk
- Details of implementation still to be confirmed
- Opportunity for comment



Informal Detour Options

- Other routes available but not selected as primary for various reasons
- Still available based on personal preference or need
- Recreational users are recommended to explore new areas of City during 2-month closure





Questions



Get Involved

Your ideas and feedback help shape the future of our city.

