

Bill No. 135
2024

By-law No. S.- ____ - ____

A by-law to assume certain works and services
in the City of London. (Kent Subdivision –
Phase 2, Stage 1, Plan 33M-750)

WHEREAS the Deputy City Manager, Environment and Infrastructure of
The Corporation of the City of London has reported that works and services have been
constructed to their satisfaction in Kent Subdivision – Phase 2, Stage 1, Plan 33M-750;

AND WHEREAS it is deemed expedient to assume the said works and
services;

NOW THEREFORE the Municipal Council of The Corporation of the City
of London enacts as follows:

1. The Corporation of the City of London assumes the following works and
services, namely:

Kent Subdivision – Phase 2, Stage 1, Plan 33M-750
Auburn Developments Inc.
Twilite Boulevard – All;
Heardcreek Trail – from south limit of Plan to Twilite Boulevard;
Applerock Avenue – from Twilite Boulevard to Buroak Drive;
Bridgehaven Drive – from Applerock Avenue to east limit of Plan;
Buroak Drive – from west limit of Plan to east limit of Plan;
Sunningdale Road West – external works (channelization)

2. The warranty period for the works and services in the subdivision referred
to in Section 1 of this by-law will commence for a duration of one calendar year from
April 12, 2024.

3. This by-law comes into force and effect on the day it is passed subject to
the provisions of PART VI.1 of the *Municipal Act*, 2001.

PASSED in Open Council on April 23, 2024 subject to the provisions of
PART VI.1 of the *Municipal Act*, 2001.

Josh Morgan
Mayor

Michael Schulthess
City Clerk

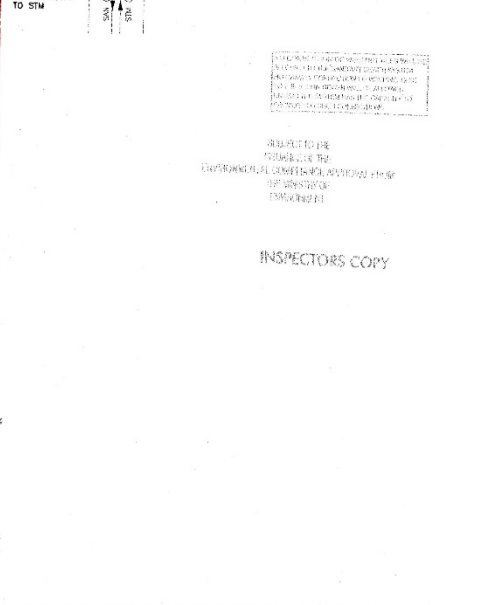
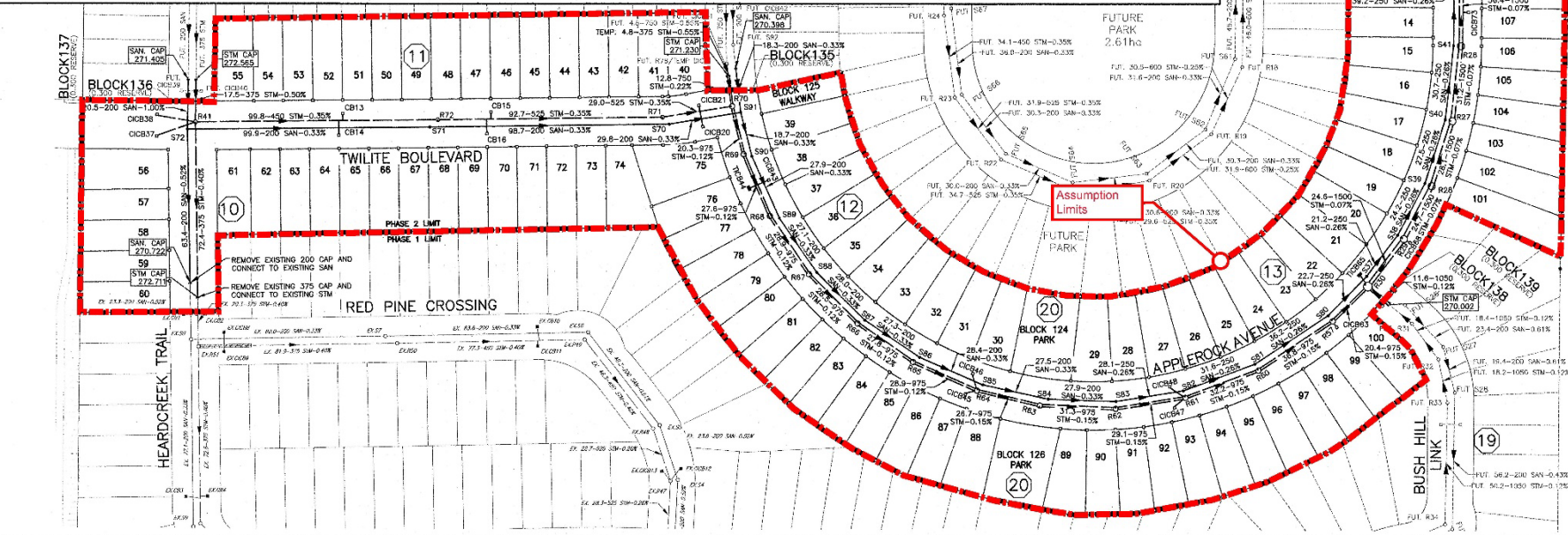
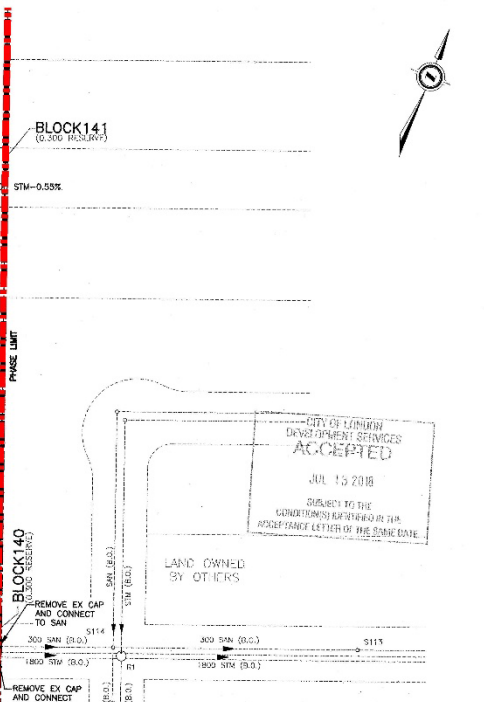
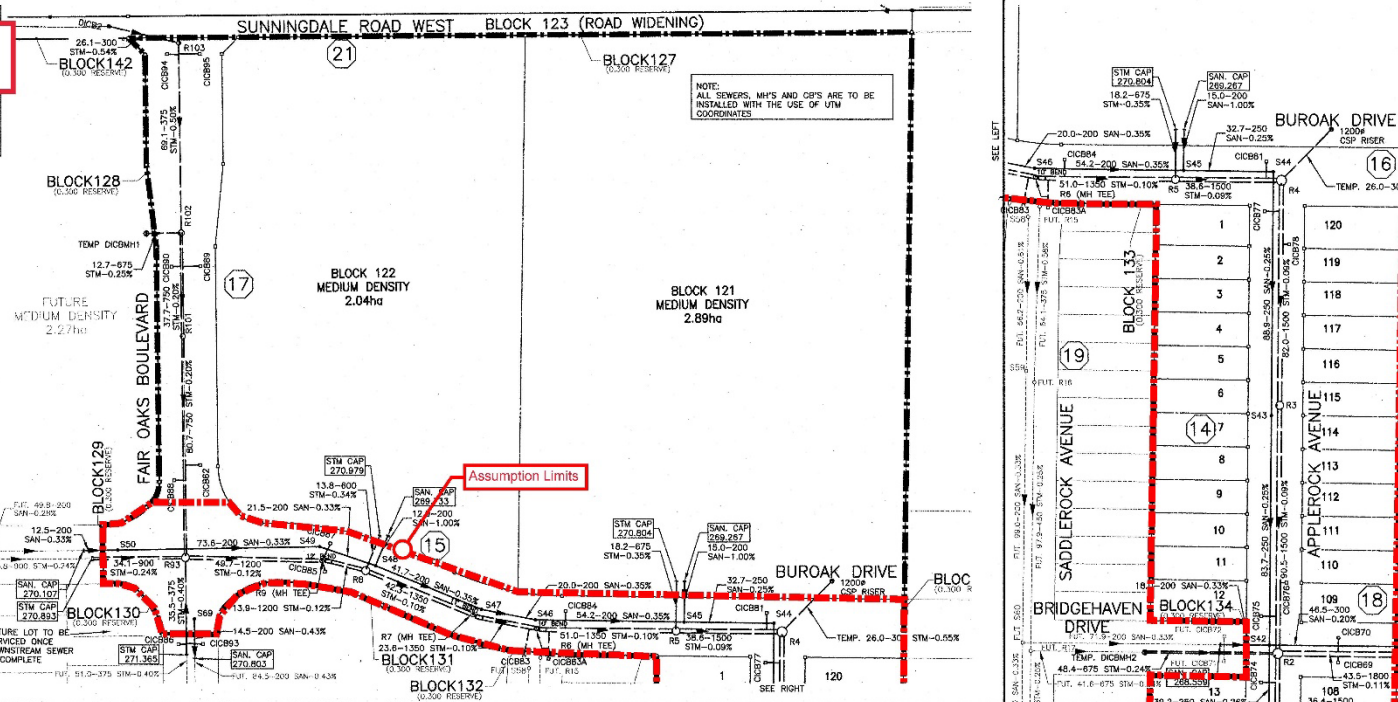
First Reading – April 23, 2024
Second Reading – April 23, 2024
Third Reading – April 23, 2024

33M-750 Kent subdivision Phase 2 Assumption Limits Map

LOCATION: ONE STOREY BRICK HOUSE, MUNICIPAL NO. 1500 SUNNINGDALE ROAD WEST, 300.4/- EAST OF HYDE PARK ROAD. BOLT SET IN THE NORTH FACE OF THE BUILDING, 0.22m WEST OF THE NORTHEAST CORNER. ELEV. - 277.662m.
 AT LEAST TWO BENCHMARKS SHALL BE USED AT ALL TIMES DURING CONSTRUCTION.

LEGEND

	LIMIT OF PHASE
	EX. STORM SEWER
	PROPOSED STORM SEWER
	PROPOSED STORM SEWER >= 750mm
	FUTURE STORM SEWER
	FUTURE STORM SEWER >= 750mm
	EX. SANITARY SEWER
	PROPOSED SANITARY SEWER
	FUTURE SANITARY SEWER
	PROPOSED SANITARY MANHOLE
	PROPOSED STORM MANHOLE
	PROPOSED CATCHBASIN MANHOLE
	PROPOSED CATCHBASIN
	PROPOSED TWIN INLET CATCHBASIN
	PROPOSED DITCH INLET CATCHBASIN
	EX. MANHOLE
	FUTURE MANHOLE
	EX. CATCHBASIN
	BY OTHERS
	151 DENOTES REGISTERED PLAN LOT/BLOCK NUMBERS
	4 DENOTES PROPOSED REGISTERED PLAN LOT/BLOCK NUMBERS
	5 PLAN & PROFILE DRAWING No.

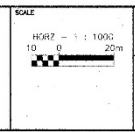


EXISTING SERVICES	DRAWING #	SOURCE	DATE	CONSTRUCTED SERVICES	COMPLETION	DETAILS	NO.	REVISIONS	DATE	CONSULTANT
							1.	1st SUBMISSION COMMENTS	NOVEMBER 2017	
							2.	2nd SUBMISSION COMMENTS	FEBRUARY 2018	
							3.	3rd SUBMISSION COMMENTS	JUNE 2018	
							4.	4th SUBMISSION COMMENTS	JUNE 2018	
							5.	5th SUBMISSION COMMENTS	JULY 2018	

Stantec

100 King Street West
 Suite 1000
 Toronto, Ontario M5X 1C4
 Canada

London
 CORPORATION OF THE CITY OF LONDON
 CANADA



KENT SUBDIVISION - PHASE 2
 FOXHOLLOW NORTH KENT DEVELOPMENTS INC.

GENERAL SERVICING PLAN

PROJECT No. 1614-13447
 SHEET No. 1 of 40
 PLAN FILE No.

CITY OF LONDON
 DEVELOPMENT SERVICES
ACCEPTED
 JUL 15 2018
 SUBJECT TO THE
 CONDITIONS SET FORTH IN THE
 APPROPRIATE LETTER OF THE BOARD DATE

INSPECTOR'S COPY