

PROFILE OF LONDON'S ONTARIO WORKS PARTICIPANTS, 2013

A RESEARCH AND POLICY DEVELOPMENT REPORT

2013-10-28

PROFILE OF LONDON'S ONTARIO WORKS PARTICIPANTS

SECTION 1: INFORMATION ON THE TOTAL CASELOAD

Data for this section of the report is from a variety of Service Delivery Management Technology (SDMT) reports and a local data extract. In some cases, data represents average monthly figures, in others; the data is a snapshot of July 19, 2013.

TECHNICAL NOTE:

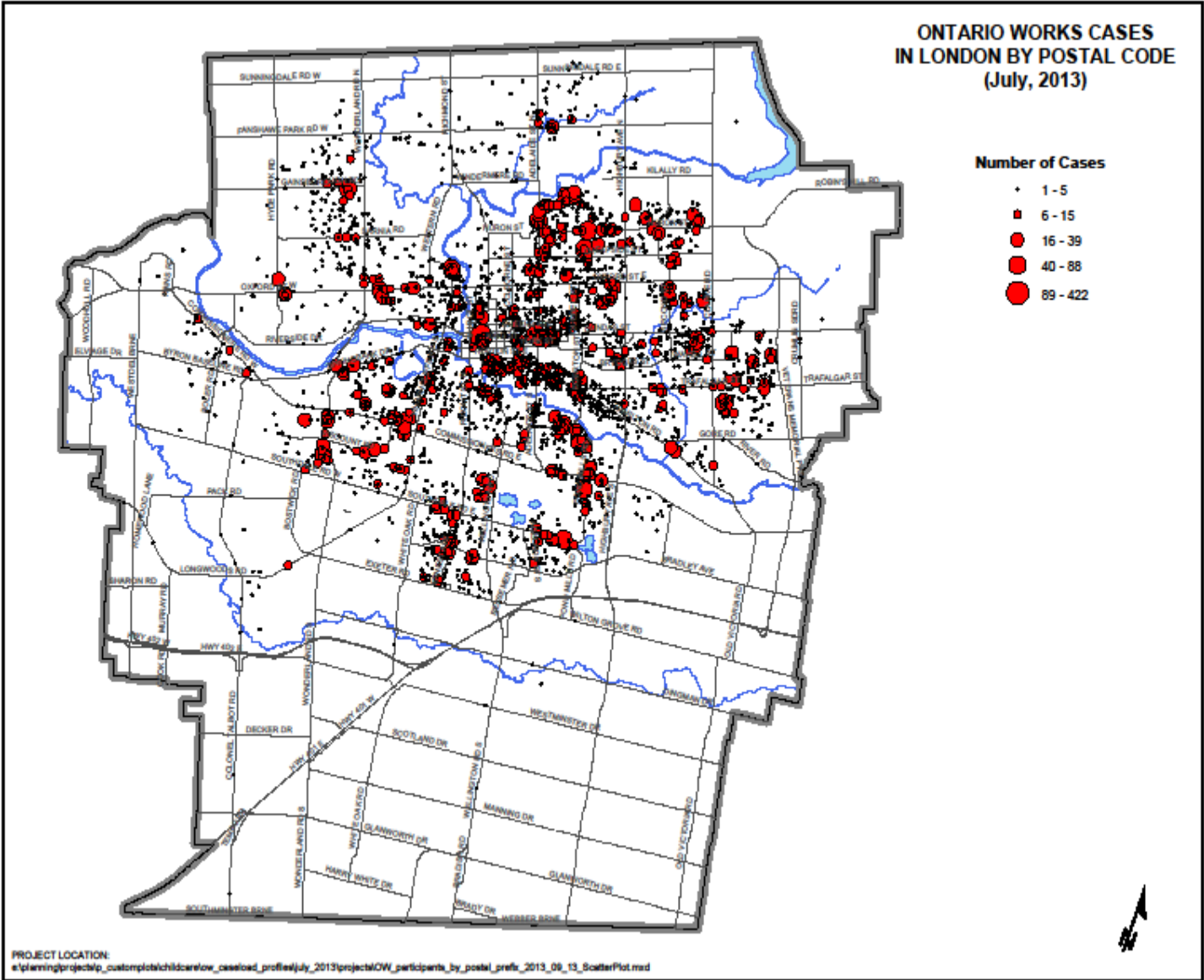
Average monthly data includes: caseload size including number of individuals and number of households, family type, number and age of children, entries, exits, and employment outcomes

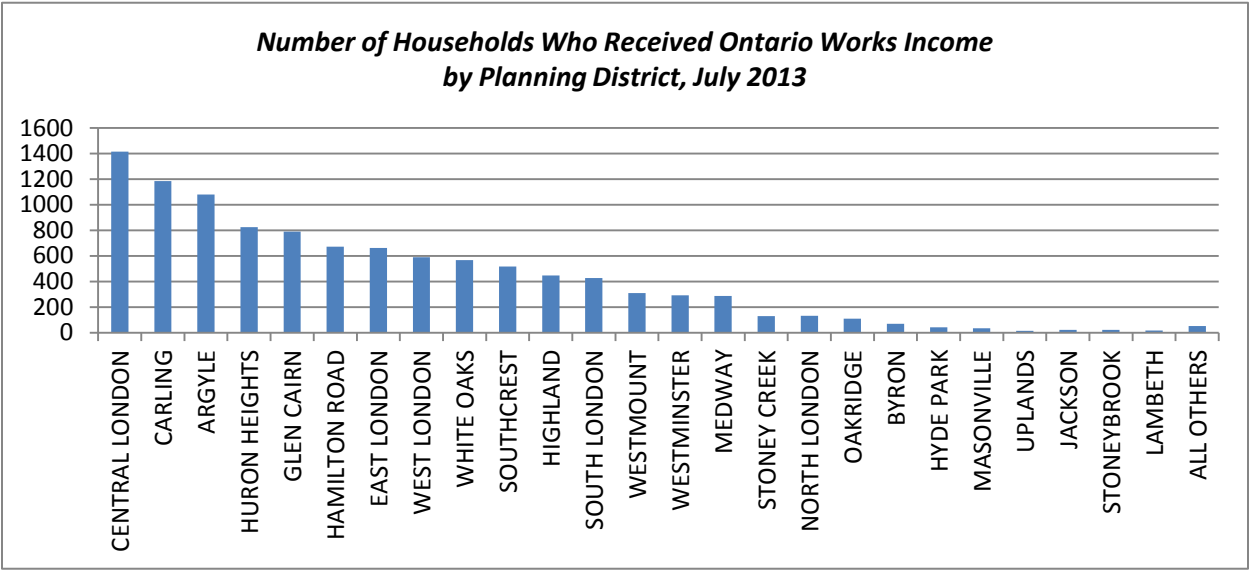
Snapshot data includes: caseload by postal code and planning district, housing tenure, age and gender, number of families with children, education, reason for needing assistance, length of time receiving assistance, profiles of selected populations, and interpreter requests

Caseload Size: Number of Individuals and Number of Households

Just over 11,000 households totalling an average of about 24,000 people including all adults and children received Ontario Works income each month in the first half of 2013. This represents approximately 6.6% of London's total population.

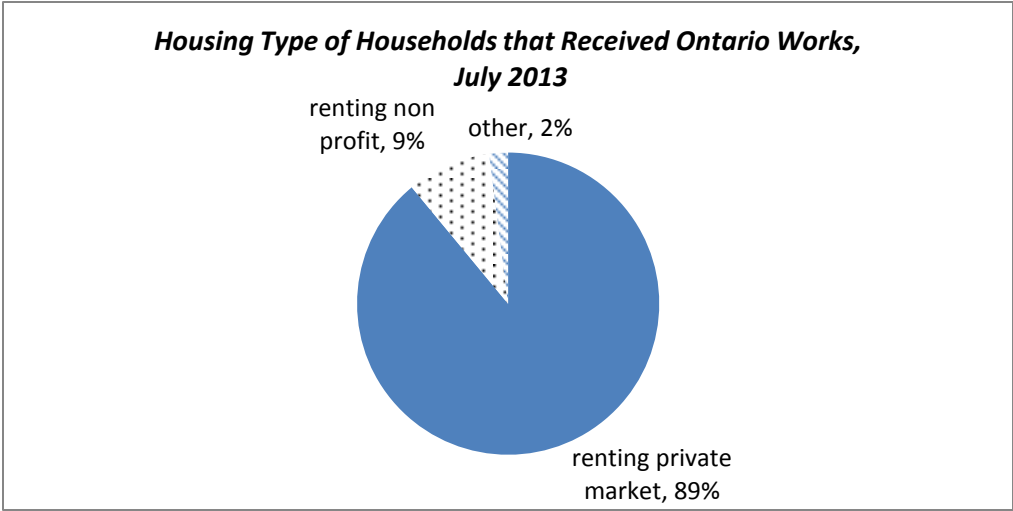
The Carling, Argyle, Glen Cairn and Huron Heights planning districts had the highest percentages of households participating in Ontario Works. The Central London planning district had the highest number of households that received assistance.





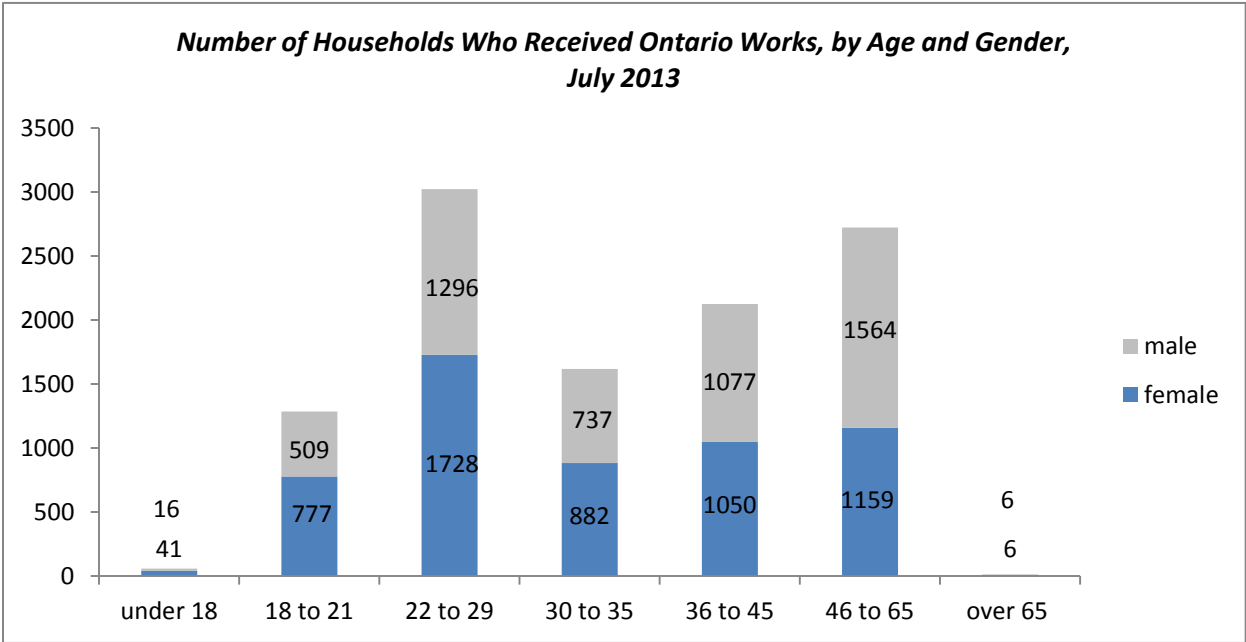
Housing Type

Almost nine out of 10 households that received assistance rented from the private market. Note that “other” housing type includes home ownership, boarding, homeless, interval or transition home, and unknown accommodation.



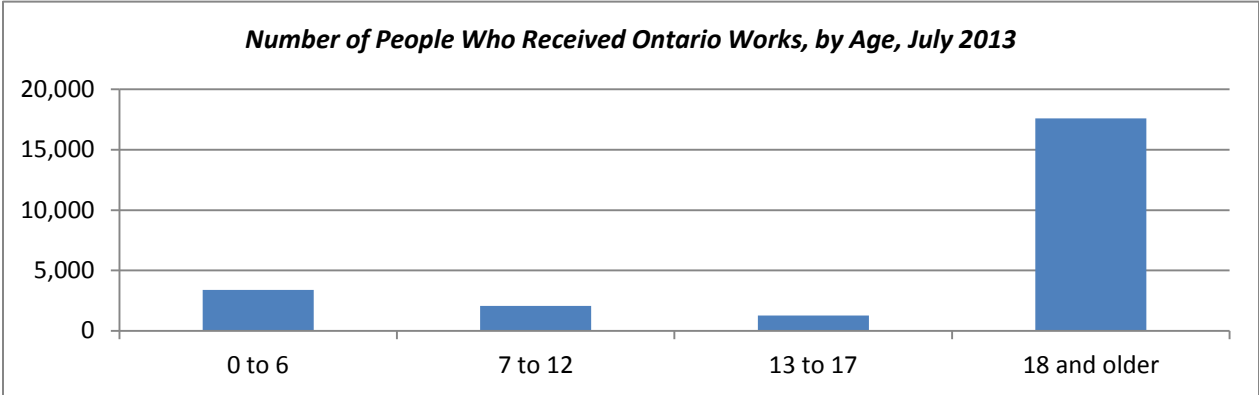
Age and Gender

Just over half of the households receiving Ontario Works in July were headed by women (52%) and 48% were headed by men. As a population, women on the caseload are younger than men.



Beneficiaries by Age

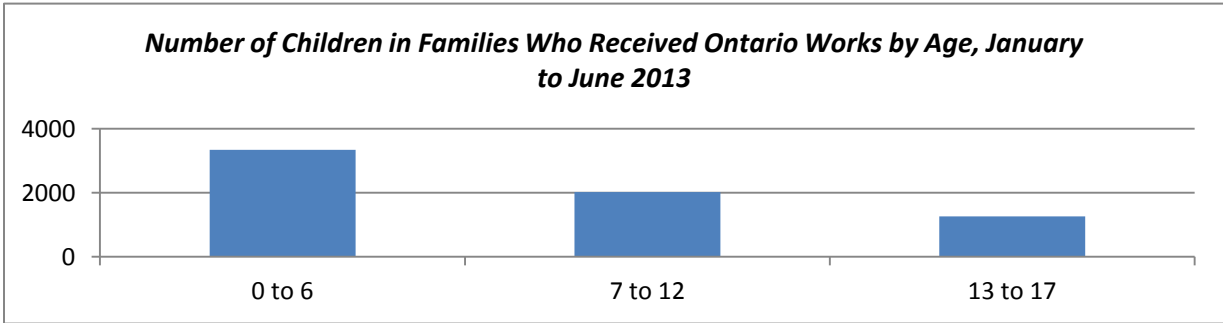
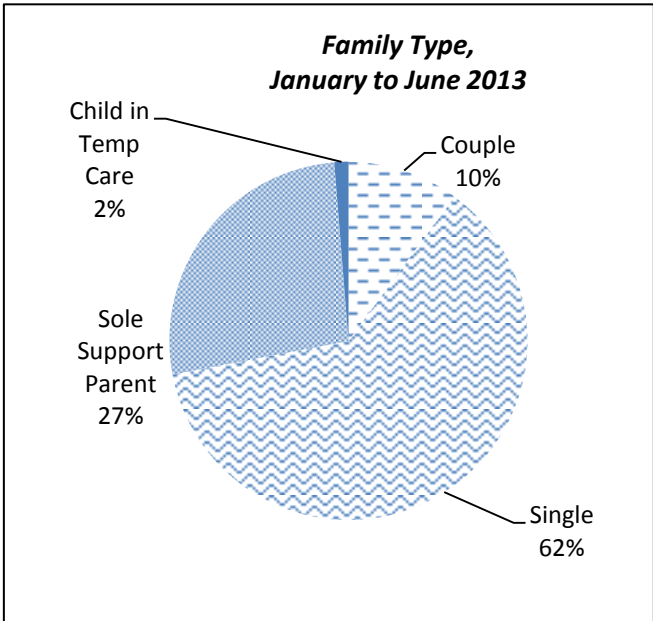
Of all the people who received benefits in July 2013, 73% were adults age 18 and older and 27% were children under the age of 18.



Family Type

On average each month from January to June, over 60 per cent of households were single individuals and just over one quarter were sole support parents.

In July, over one third of the caseload were families with children (3,569) and 79 per cent of these families were sole support families. The average family had almost 2 children, for a total of about 6,700 children. On average each month, half of all children were under the age of seven.



Education

In July 2013 over half of households reported obtaining grade 12 education or higher.

Reported Education Level	Percent of Caseload*
Unknown or less than grade 9	7%
Grade 9 to 11	38%
High school diploma	31%
Post secondary education	25%

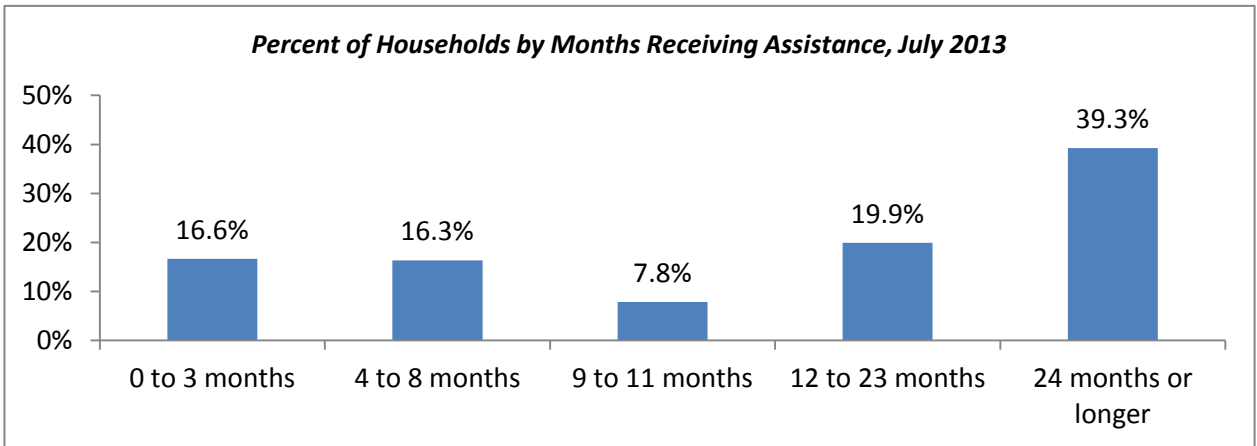
*numbers may not total 100 due to rounding

Caseload Dynamics

In the first half of 2013, a total of 3,950 households entered London's Ontario Works program and a total of 3,600 left.

The main reasons for needing assistance are: inability to obtain employment (69%), separated with dependents (9%), ill health (8%), Employment Insurance exhausted (3%), Earnings Less than OW Budget (3%) and Hostel – Homeless OW (2%).

In July, 41 per cent of households had received assistance for less than one year, and 59 per cent had been receiving benefits for one year or longer.

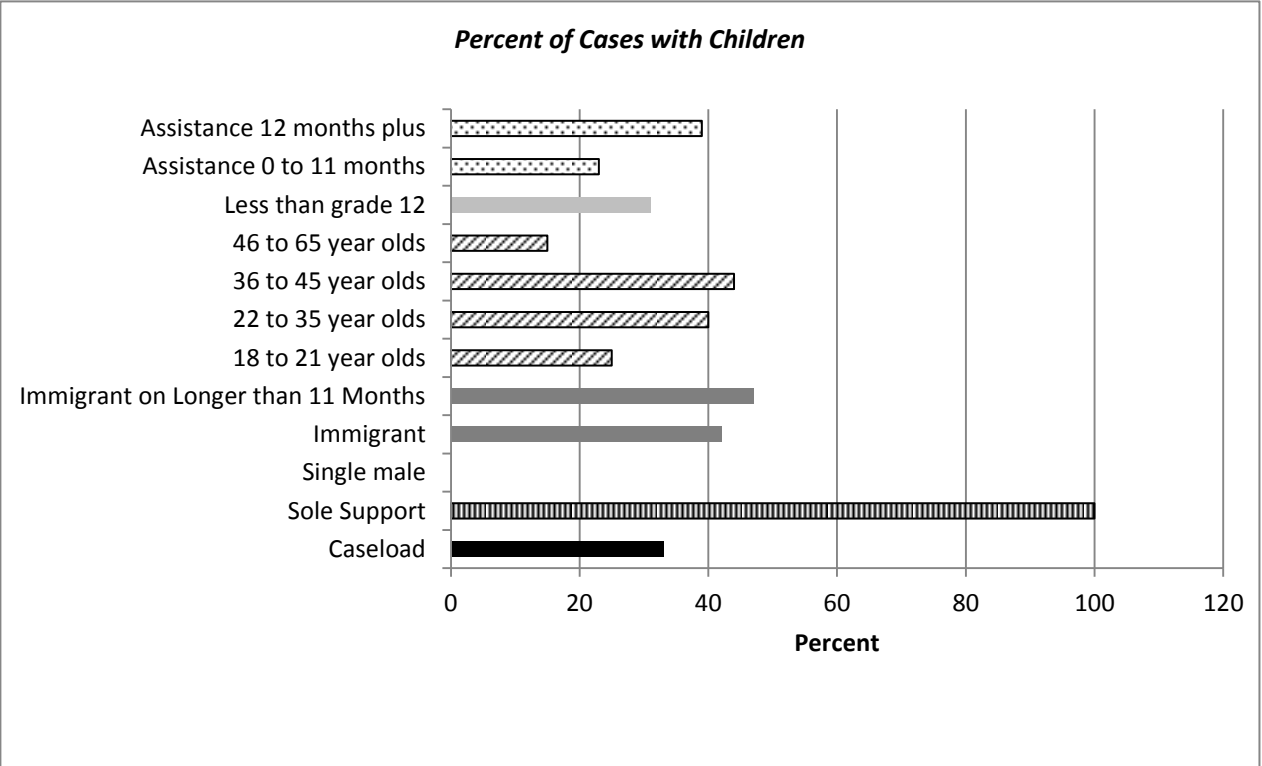
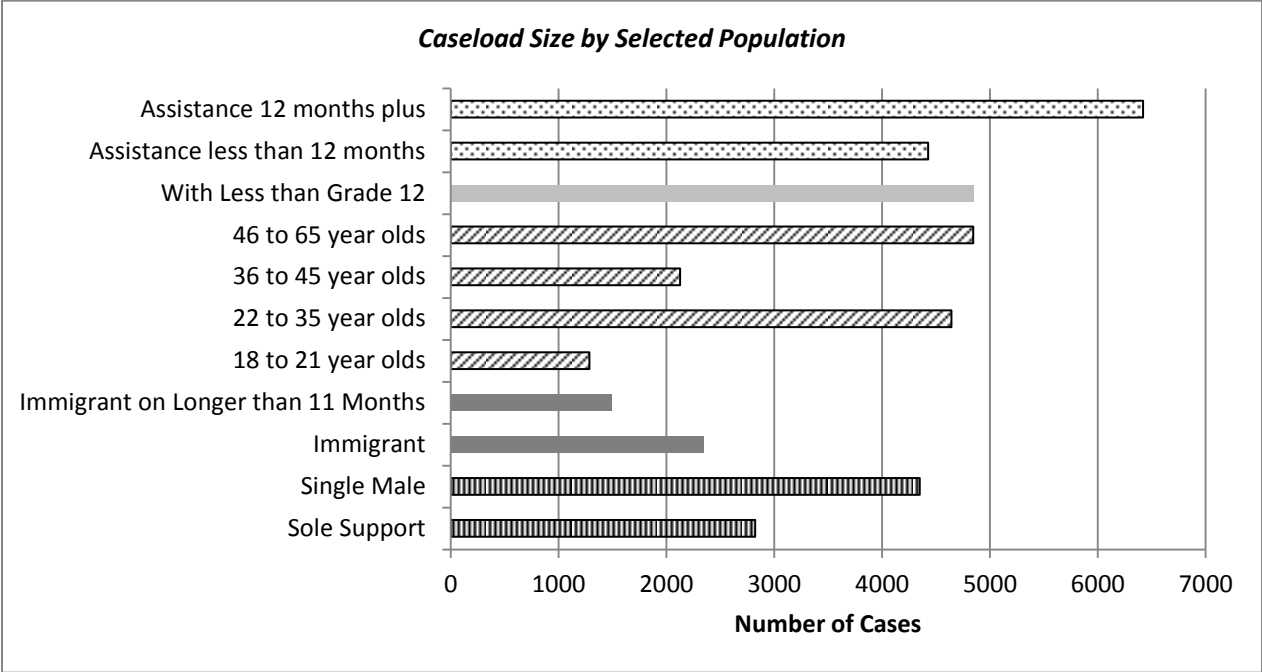


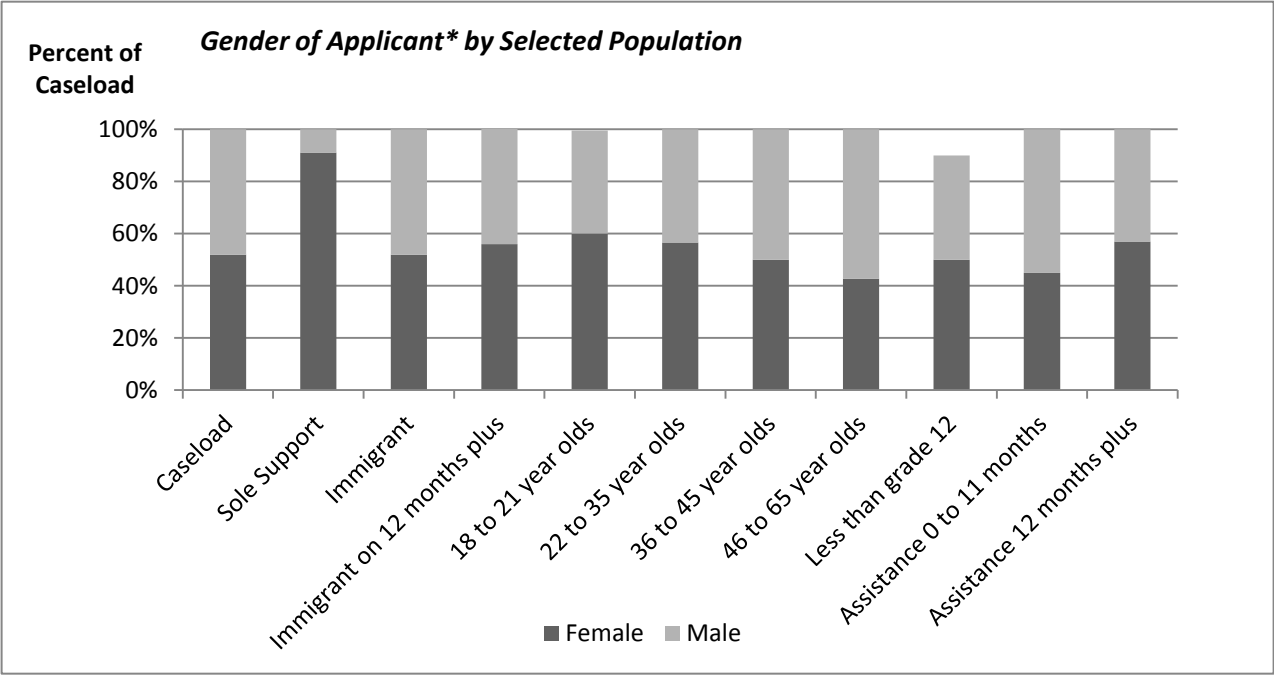
SECTION 2: INFORMATION ON SELECTED POPULATIONS

Data for this section of the report is a snapshot of the caseload on July 19, 2013. For this reason, data may not be consistent with what is cited earlier in this report.

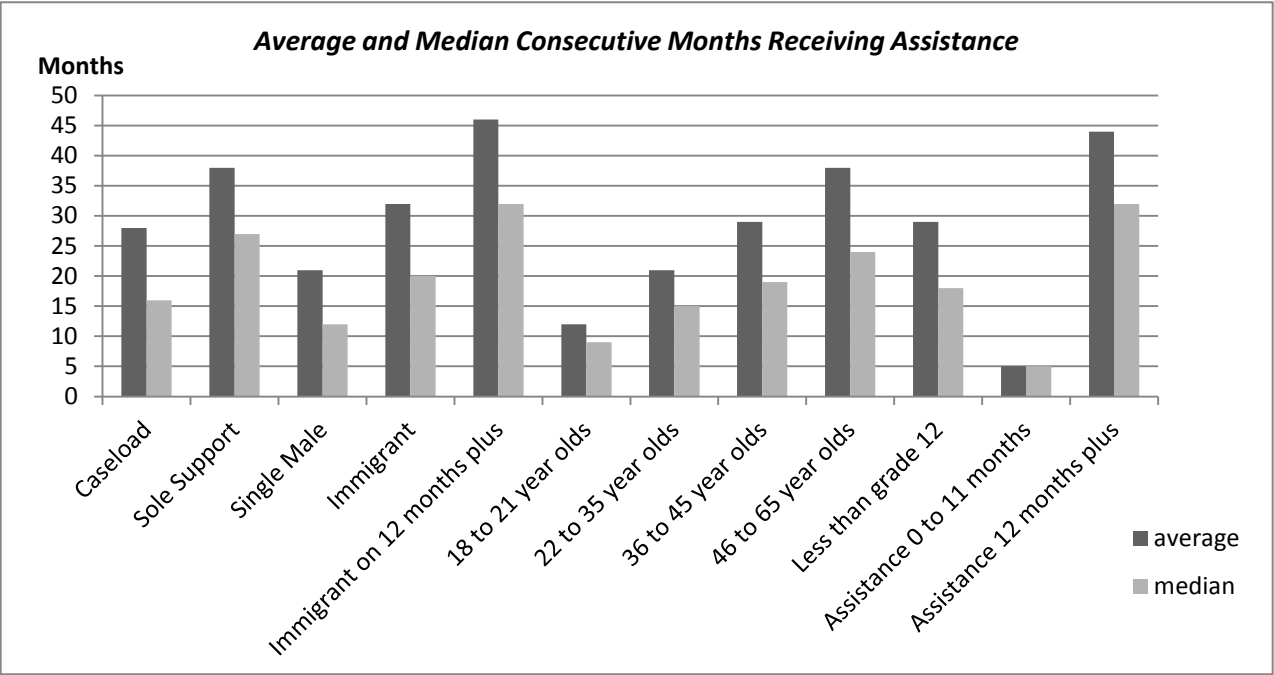
The following charts provide a visual comparison of the attributes of selected populations on the caseload. For more detail on these, please consult the tables provided at the end of this report.

*Applicant refers to the head of the household for each case.

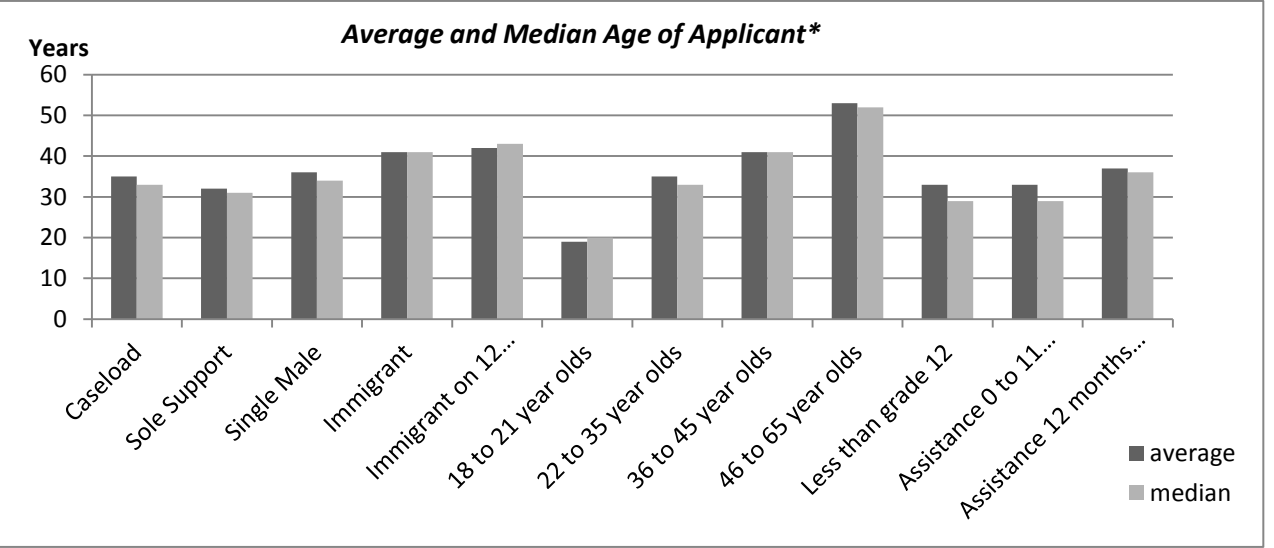




*Applicant refers to the head of the household for each population group.



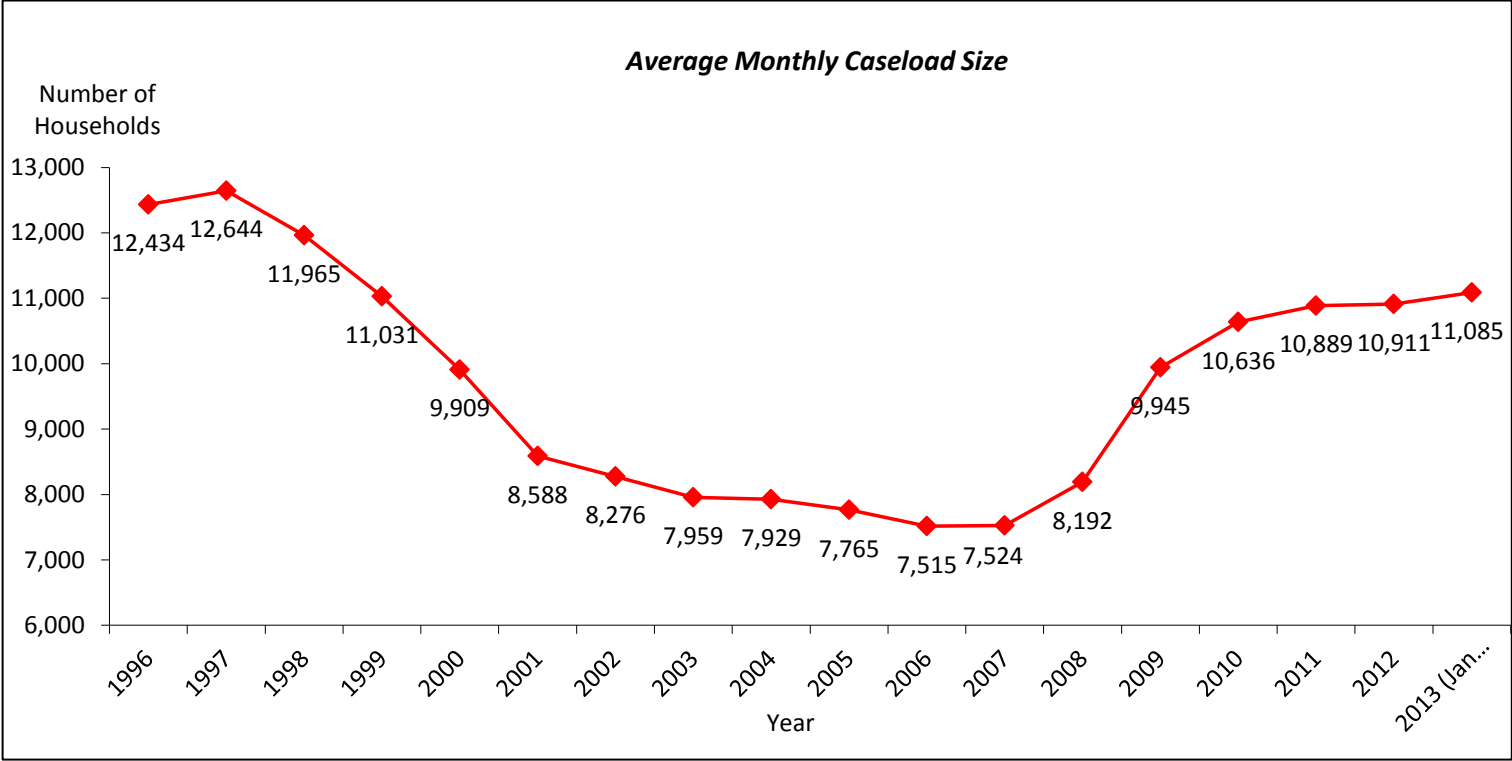
The average figure is the total cumulative number of months that all households on the caseload have received assistance divided by the number of cases. The median is the middle value. The difference between the months on assistance average and median figures for most of the populations signifies that the median figure is more representative of the population’s time on assistance than is the average figure.



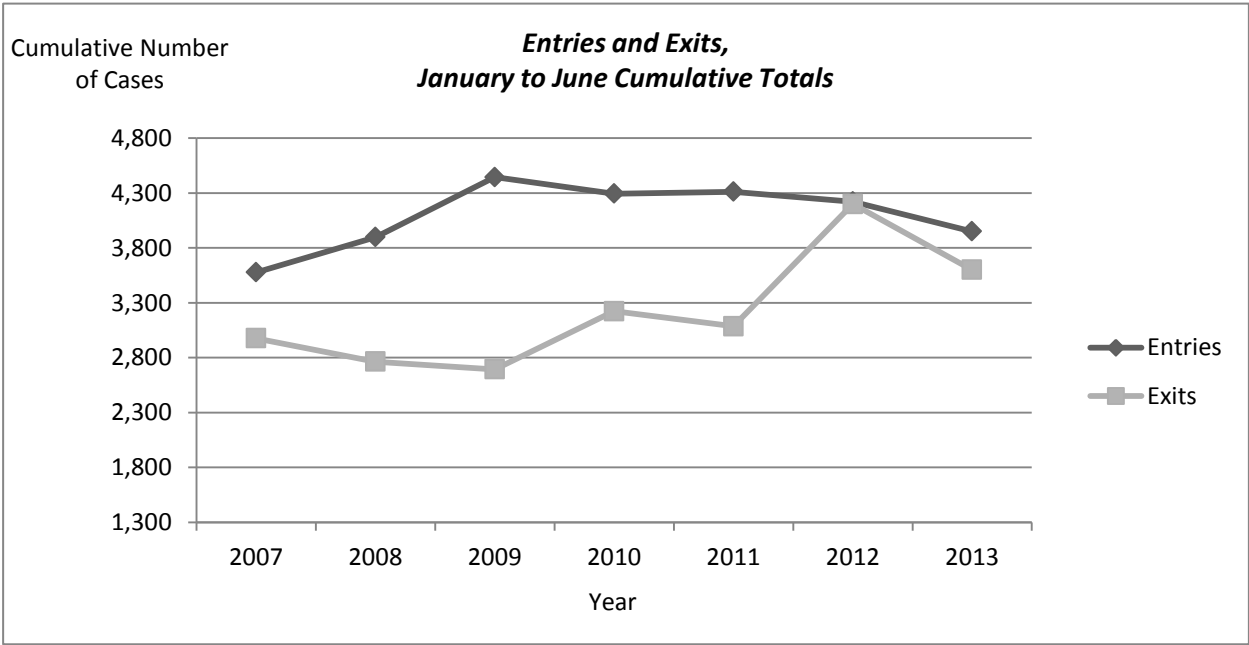
SECTION 3: TRENDS

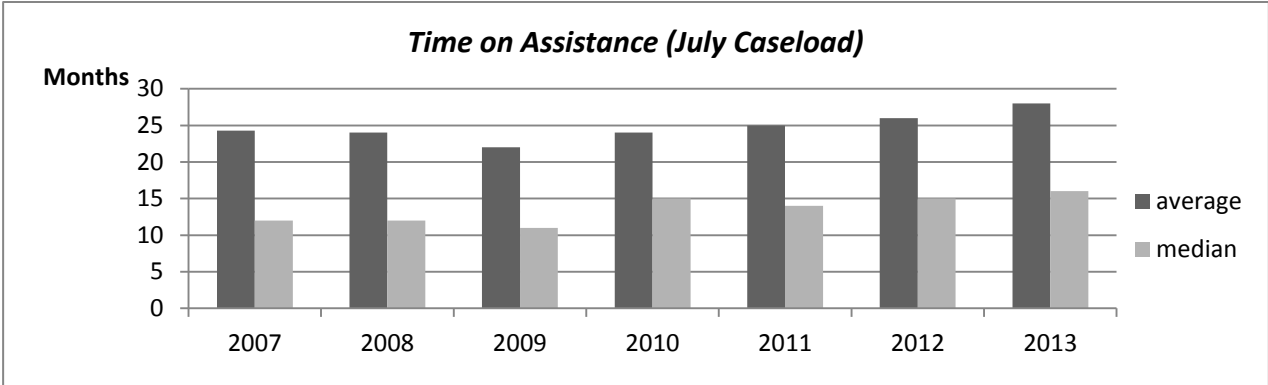
Caseload Size and Dynamics

Since 2007, the year that sustained caseload growth began, the caseload has increased by 47 per cent.



From 2007 to 2009, caseload growth was been driven by an increase in the cumulative number of households entering the Ontario Works program, coupled with a reduction in the cumulative number exiting the program. Caseload growth in 2011 has been driven by a decline in the number of households leaving Ontario Works. In the first six months of 2012 the number of caseload exits was almost equal to the number of caseload entries. In the first six months of 2013 the number of caseload entries is once again outpacing the number of caseload exits

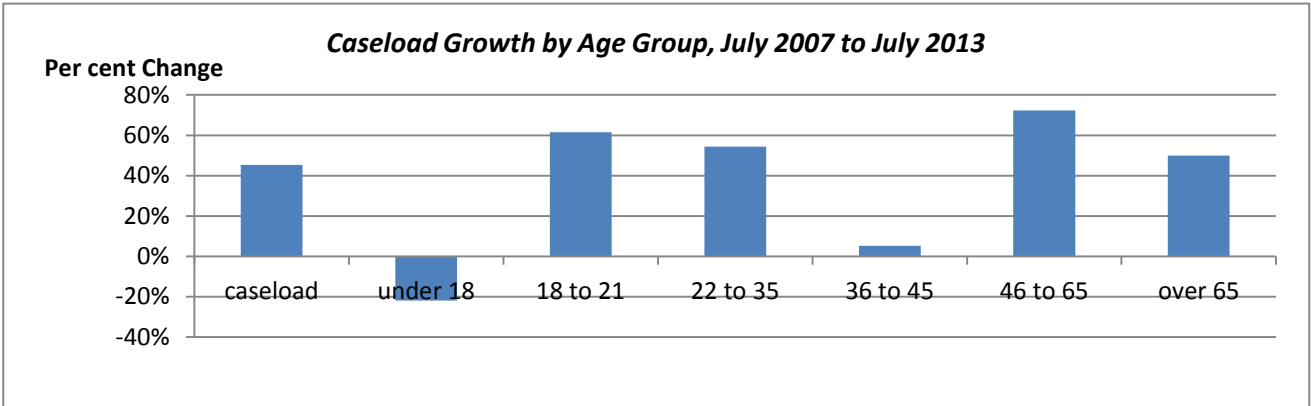




The average and median number of months on assistance was at its lowest in 2009. This was due to the high number of entries to Ontario Works and the low number of exits from the program. Since then, times on assistance figures have increased.

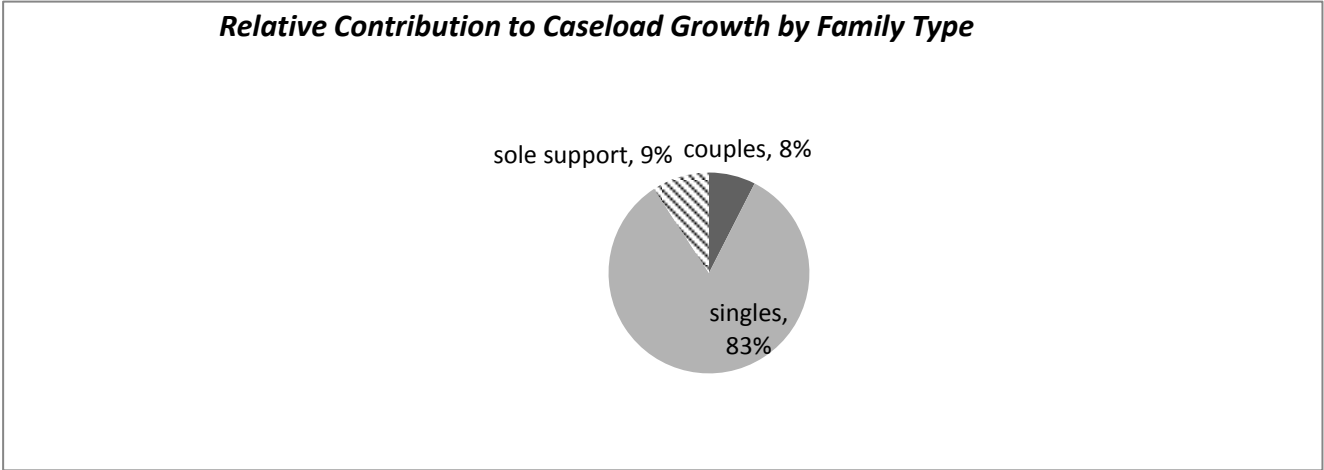
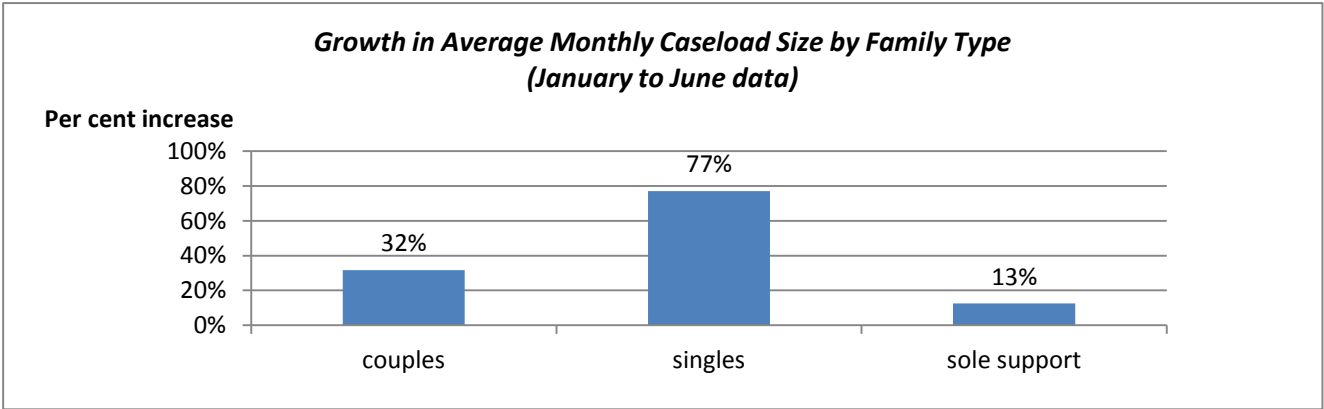
Age

Compared to 2007, the 46 to 65 year old age group and the 18 to 21 year old age group have grown the most, increasing by 62 per cent. The number of 22 to 35 year olds on the caseload has grown by 52 per cent.



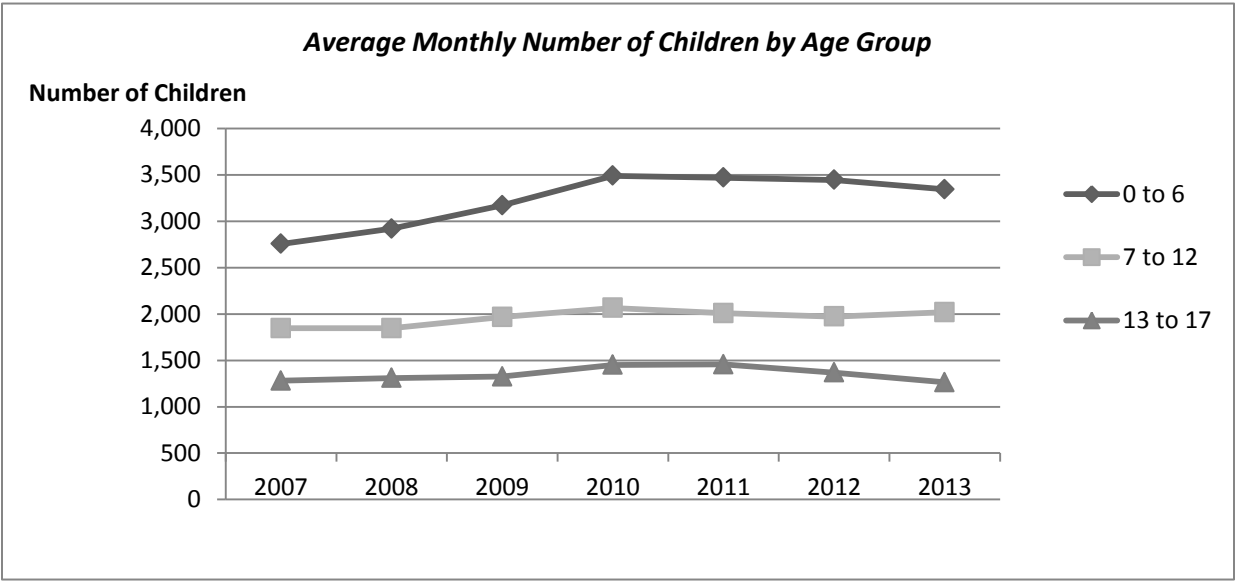
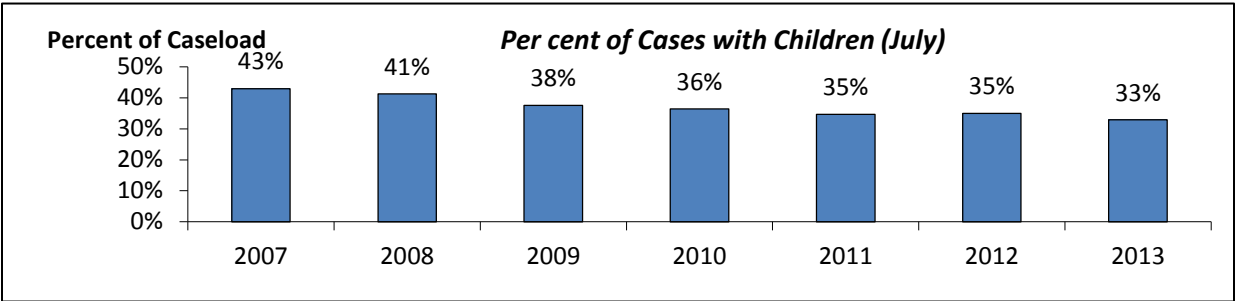
Family Type

Since to 2007, the single caseload has grown by 77 per cent, the couples caseload by 32 per cent and the sole support caseload by 13 per cent. The singles caseload accounted for 83 per cent of total caseload growth while the sole support caseload accounted for 9 per cent and the couples caseload accounted for 8 per cent.



Children

The proportion of households with children receiving Ontario Works has declined 18 per cent between 2007 and 2013. The increase in child benefits may contribute to this decline. From 2007 to 2013, the number of children living in families receiving assistance increased by 13 per cent. Most of this growth was due to an increase in the number of 0 to 6 year olds.



Interpreter Requests

Although the proportion of the caseload that are landed immigrants and refugee claimants has stayed between 11 per cent and 16 per cent since 2007, the top languages requested have changed. Spanish has consistently been the top requested language followed by Arabic. In 2013, Spanish accounted for 32 per cent of all interpreter requests while Arabic accounted for 28 per cent.

Immigrant Trends: Top Ten Interpreter Requests (January to June)

2009	2010	2011	2012	2013
183 requests per month	222 requests per month	210 requests per month	189 requests per month	169 Requests per month
SPANISH	SPANISH	SPANISH	SPANISH	SPANISH
ARABIC	ARABIC	ARABIC	ARABIC	ARABIC
PERSIAN	KAREN	FARSI	OTHER	FARSI
KAREN	PERSIAN	FRENCH	FARSI	NEPALI
VIETNAMESE	VIETNAMESE	KAREN	VIETNAMESE	KAREN
FRENCH	KHMER	VIETNAMESE	KAREN	KHMER
ALBANIAN	AMHARIC	KHMER	DARI	VIETNAMESE
KURDISH	FRENCH	OTHER	FRENCH	DARI
KHMER	ALBANIAN	DARI	KHMER	FRENCH
SOMALI	KURDISH	SOMALI	SOMALI	SOMALI

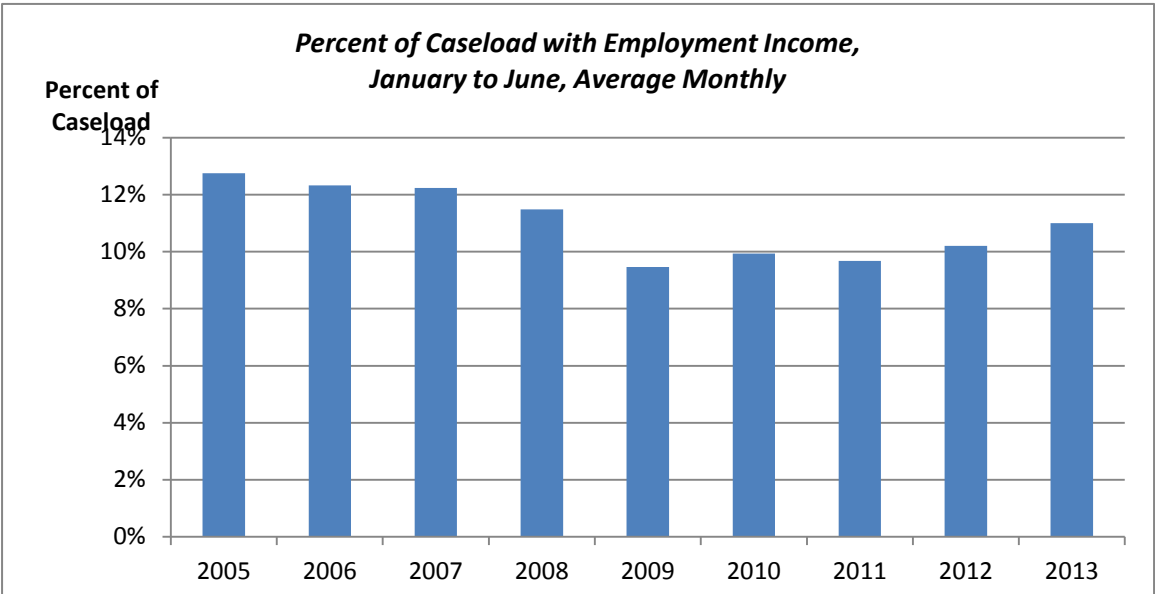
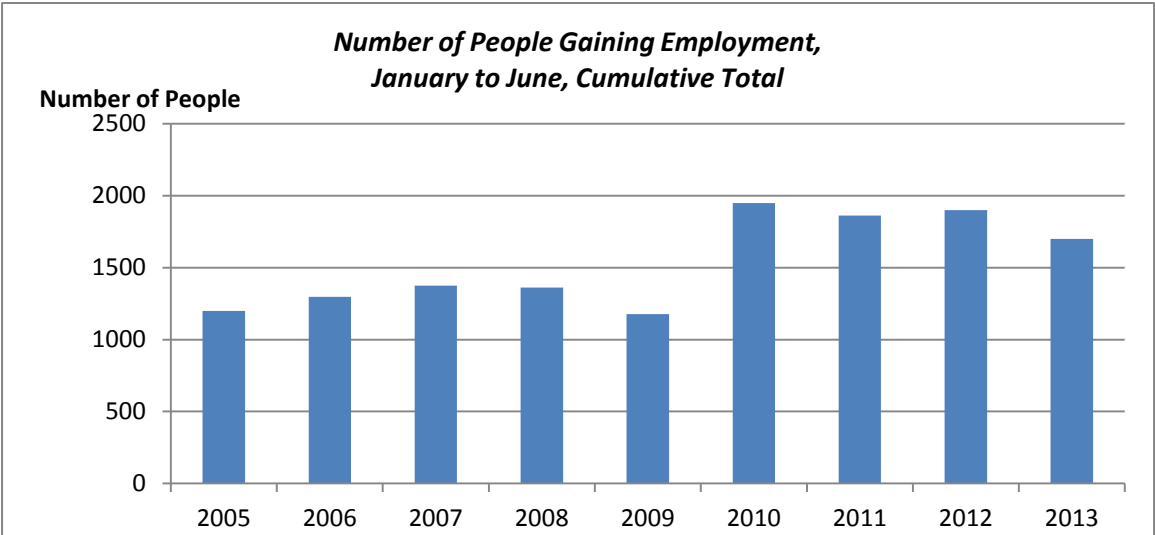
Employment Outcomes

In the first half of 2013, 10 per cent of households earned employment income and a total of 1,699 people gained employment. Almost 22 per cent of households that exited Ontario Works left with employment income.

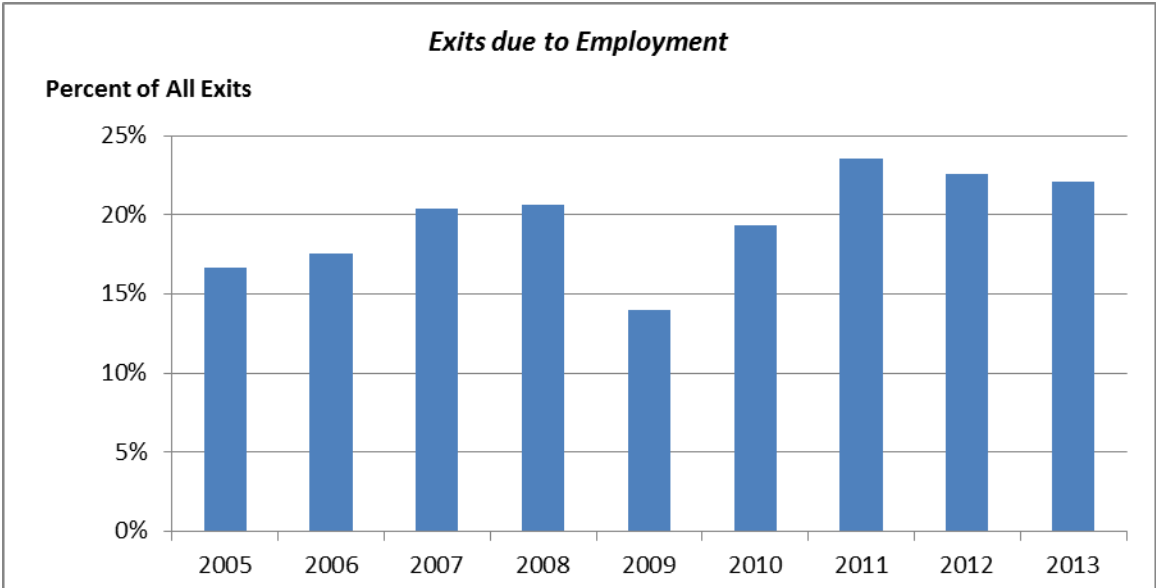
Compared to 2012 the number of people gaining employment in the first half of 2013 has decreased,¹ however the number remains higher than prerecession levels.

The per cent of the caseload with employment income has increased for the last three years although it remains lower than it was from 2005 to 2008.

Exits due to employment have decreased compared to 2012 in actual numbers and as a percentage of cases leaving Ontario Works.



¹ The data source reporting the number of people gaining employment has changed in 2012 due to the discontinuation of a provincially produced report (the Service Contract). While another provincially produced SDMT report provides data for the number of people gaining employment, the two reports do not reconcile and the year over year patterns differ. For this reason, data from this Profile Report cannot be compared to data contained in previous Profile Reports.



Appendix 1: City of London Participant Profile, July 19, 2013



	Total Caseload	Sole Support	Single Male	Immigrant	Immigrant on Assistance more than 11 months	18 to 21 yrs old	22 to 29 yrs old	30 to 35 yrs old	36 to 45 yrs old	Older Worker (Age 46 to 65)	Education Less than Grade 12	On Assistance Less than 4 months	On Assistance 4 to 8 months	On Assistance 9 to 11 months	On Assistance Longer than 11 months
Caseload	10,848	2,823	4,349	2,345	1,491	1,286	3,024	1,619	2,127	2,723	4,845	1,805	1,772	850	6,420
	100%	26%	40%	22%	14%	12%	28%	15%	20%	25%	45%	17%	16%	8%	59%
Total Beneficiaries	18,858	7,934	4,420	5,185	3,548	1,751	5,195	3,361	4,511	3,957	8,250	2,771	2,630	1,326	12,216
Applicants and Spouses	11974	2971	4389	2906	1891	1369	3283	1804	2451	2999	5285	2042	1911	914	7292
Dependent Children	6478	4837	0	2050	1463	382	1912	1551	1906	712	2790	698	697	395	4688
Dependant Adult	406	126	31	229	194	0	0	6	154	246	175	31	22	17	336
Average number of persons per case	1.7	2.8	1.0	2.2	2.4	1.4	1.7	2.1	2.1	1.5	1.7	1.5	1.5	1.6	1.9
Gender															
Male	5205	254	4349	1126	662	509	1296	737	1077	1564	2401	963	1024	442	2765
% male	48%	9%	100%	48%	44%	40%	43%	46%	51%	57%	50%	53%	58%	52%	43%
Female	5643	2569	0	1219	829	777	1728	882	1056	1159	244	842	748	398	3655
% female	52%	91%	0%	52	56%	60%	57%	54	50	43	50	47	42	47	57
Family Type															
Single	6932	0	4349	1206	693	935	1812	839	1137	2157	3184	1372	1326	598	3645
% single	64%	0%	100%	51%	46%	73%	60%	52%	53%	79%	66%	76%	74%	70%	57%
Sole Support	2823	2823	0	567	398	288	973	612	666	269	1266	296	317	188	2022
% sole support	26%	100%	0%	24%	27%	22%	32%	38%	31%	10%	26%	16%	18%	22%	31%
Couple - No Children	347	0	0	143	96	24	76	37	56	152	136	46	51	24	226
% couple with no children	3%	0%	0%	6%	6%	2%	3%	2%	3%	6%	3%	3%	3%	3%	4%
Couple - With Children	745	0	0	429	304	39	163	131	268	145	259	91	88	40	527
% couple with children	7%	0%	0%	18%	20%	3%	5%	8%	13%	5%	5%	5%	5%	5%	8%

	Total Caseload	Sole Support	Single Male	Immigrant	Immigrant on Assistance more than 11 months	18 to 21 yrs old	22 to 29 yrs old	30 to 35 yrs old	36 to 45 yrs old	Older Worker (Age 46 to 65)	Education Less than Grade 12	On Assistance Less than 4 months	On Assistance 4 to 8 months	On Assistance 9 to 11 months	On Assistance Longer than 11 months
Time on Assistance Frequency (London)															
0 to 3 Months	1,805	296	855	337	0	256	582	230	302	317	683	1,805	0	0	0
4 to 8 Months	1,772	317	905	327	0	281	524	244	331	366	759	0	1,772	0	0
9 to 11 Months	850	188	402	190	0	130	272	125	149	161	391	0	0	850	0
% 0 to 11 months	41%	28%	50%	36%	0%	60%	46%	37%	37%	31%	38%	100%	100%	100%	0%
12 to 17 Months	1,167	257	476	246	246	181	356	170	216	239	553	0	0	0	1,167
18 to 23 Months	992	240	411	219	219	128	294	146	182	239	493	0	0	0	992
% 12 to 23 months	20%	18%	20%	20%	31%	24%	21%	20%	19%	18%	22%	0%	0%	0%	34%
24 to 29 Months	746	228	251	167	168	86	210	116	145	188	327	0	0	0	746
30 to 35 Months	599	191	201	142	144	57	157	88	116	180	283	0	0	0	599
36 to 41 Months	449	160	139	111	112	36	118	72	106	117	190	0	0	0	449
42 to 47 Months	406	119	152	89	89	18	109	67	94	118	186	0	0	0	406
% 24 to 47 months	20%	25%	17%	22%	34%	15%	33%	33%	31%	32%	35%	0%	0%	0%	55%
48 to 53 Months	323	115	104	72	71	9	75	62	66	111	137	0	0	0	323
54 to 59 Months	325	112	110	93	94	3	90	45	71	116	149	0	0	0	325
60 to 65 Months	237	81	82	43	41	1	53	41	62	80	113	0	0	0	237
Over 65 Months	1,176	519	260	309	307	0	184	212	287	491	580	0	0	0	1,176
% 48 + months	19%	29%	13%	22%	34%	1%	13%	22%	23%	29%	20%	0%	0%	0%	32%
Avg Months on Assistance	28	38	21	32	46	12	21	30	31	38	29	2	5	9	44
Median Months on Assistance	16	27	12	20	32	9	13	19	19	24	18	2	5	9	32



	Total Caseload	Sole Support	Single Male	Immigrant	Immigrant on Assistance more than 11 months	18 to 21 yrs old	22 to 29 yrs old	30 to 35 yrs old	36 to 45 yrs old	Older Worker (Age 46 to 65)	Education Less than Grade 12	On Assistance Less than 4 months	On Assistance 4 to 8 months	On Assistance 9 to 11 months	On Assistance Longer than 11 months
Age															
Under 18	68	57	15	14	5	0	0	0	0	0	0	54	17	21	11
18 to 21	1,339	1,286	288	481	116	53	1,286	0	0	0	0	892	356	281	130
% 21 years of age and younger	12%	11%	11%	5%	4%	100%	0%	0%	0%	0%	20%	21%	17%	17%	8%
22 to 29	3,024	973	1,174	387	180	0	3,024	0	0	0	1,521	582	524	272	1,646
% 22 to 29 years of age	28%	34%	27%	17%	12%	0%	100%	0%	0%	0%	31%	32%	30%	32%	26%
30 to 35	1,619	612	598	336	204	0	0	1,619	0	0	663	230	244	125	1,019
% 30 to 35 years of age	15	22	14	14	14	0	0	100	0	0	14	13	14	15	16
36 to 45	2,127	666	777	596	408	0	0	0	2,127	0	740	302	331	149	1,345
% 36 to 45 years of age	20	24	18	25	27	0	0	0	100	0	15	17	19	18	21
46 to 55	1,872	241	893	565	395	0	0	0	0	1,872	682	236	260	123	1,253
% 46 to 55 years of age	17%	9%	21%	24%	26%	0%	0%	0%	0%	69%	14%	13%	15%	14%	20%
56 to 65	851	28	408	329	247	0	0	0	0	851	287	81	105	38	626
Over 65	12	0	4	11	4	0	0	0	0	0	6	1	5	2	4
% 56 + years	8%	1%	9%	14%	17%	0%	0%	0%	0%	31%	6%	5%	6%	5%	10%
Average Age	35	32	36	41	42	19	25	32	41	53	33	32	32	34	37
Median Age	33	31	34	41	43	20	25	32	41	52	29	29	29	30	36



	Total Caseload	Sole Support	Single Male	Immigrant	Immigrant on Assistance more than 11 months	18 to 21 yrs old	22 to 29 yrs old	30 to 35 yrs old	36 to 45 yrs old	Older Worker (Age 46 to 65)	Education Less than Grade 12	On Assistance Less than 4 months	On Assistance 4 to 8 months	On Assistance 9 to 11 months	On Assistance Longer than 11 months
Immigrant Status															
Total	2,345	568	683	2,345	1,491	116	384	334	595	887	755	333	327	188	1,456
% of Total Caseload Population	22%	5%	6%	22%	14%	1%	4%	3%	5%	8%	7%	3%	3%	2%	13%
% of Selected Population Group	22%	20%	16%	100.0%	100.0%	9.0%	13%	21%	28.0%	33%	16%	18%	19%	22%	23%
Canadian Citizen	1,131	307	387	1,131	679	52	186	152	263	471	350	179	171	102	679
% of immigrant population	48%	54%	57%	48%	46%	45%	48%	46%	44%	53%	46%	54%	52%	54%	47%
Convention Refugee	57	10	16	57	45	1	6	6	25	20	9	4	5	3	45
% of immigrant population	2%	2%	2%	2%	3%	1%	2%	2%	4%	2%	1%	1%	2%	2%	3%
Landed Immigrant	939	221	232	939	621	49	161	142	239	343	358	128	124	66	594
% of immigrant population	40%	39%	34%	40%	42%	42%	42%	43%	40%	39%	47%	38%	38%	35%	41%
Refugee Claimant	204	29	47	204	138	14	31	34	68	53	38	22	27	17	138
% of immigrant population	9%	5%	7%	9%	9%	12%	8%	10%	11%	6%	5%	7%	8%	9%	9%
Education															
Unknown or No Education Reported	95	29	13	84	61	0	5	13	30	46	95	10	15	8	62
Less than Grade 9	621	136	230	230	175	47	147	69	98	254	621	66	77	47	431
% less than grade 9 or unknown	7%	6%	6%	13%	16%	4%	5%	5%	6%	11%	15%	4%	5%	6%	8%
Grade 9 to 11	4,129	1,101	1,824	446	292	845	1,369	581	612	669	4,129	607	667	336	2,518
% grade 9 to 11	38%	39%	42%	19%	20%	66%	45%	36%	29%	25%	85%	34%	38%	40%	39%
Grade 12 to 13	3,318	790	1,455	676	426	323	900	502	680	907	0	563	602	247	1,906
% grade 12 or 13	31%	28%	33%	29%	29%	25%	30%	31%	32%	33%	0%	31%	34%	29%	30%
Post Secondary	2,685	767	827	909	537	71	603	454	707	847	0	559	441	212	1,503
% post secondary	25%	27%	19%	39%	36%	6%	20%	28%	33%	31%	0%	31%	25%	25%	23%

