

# Oxford Street West Municipal Class Environmental Assessment



**Ecological Community Advisory Committee**

Thursday, March 21, 2024



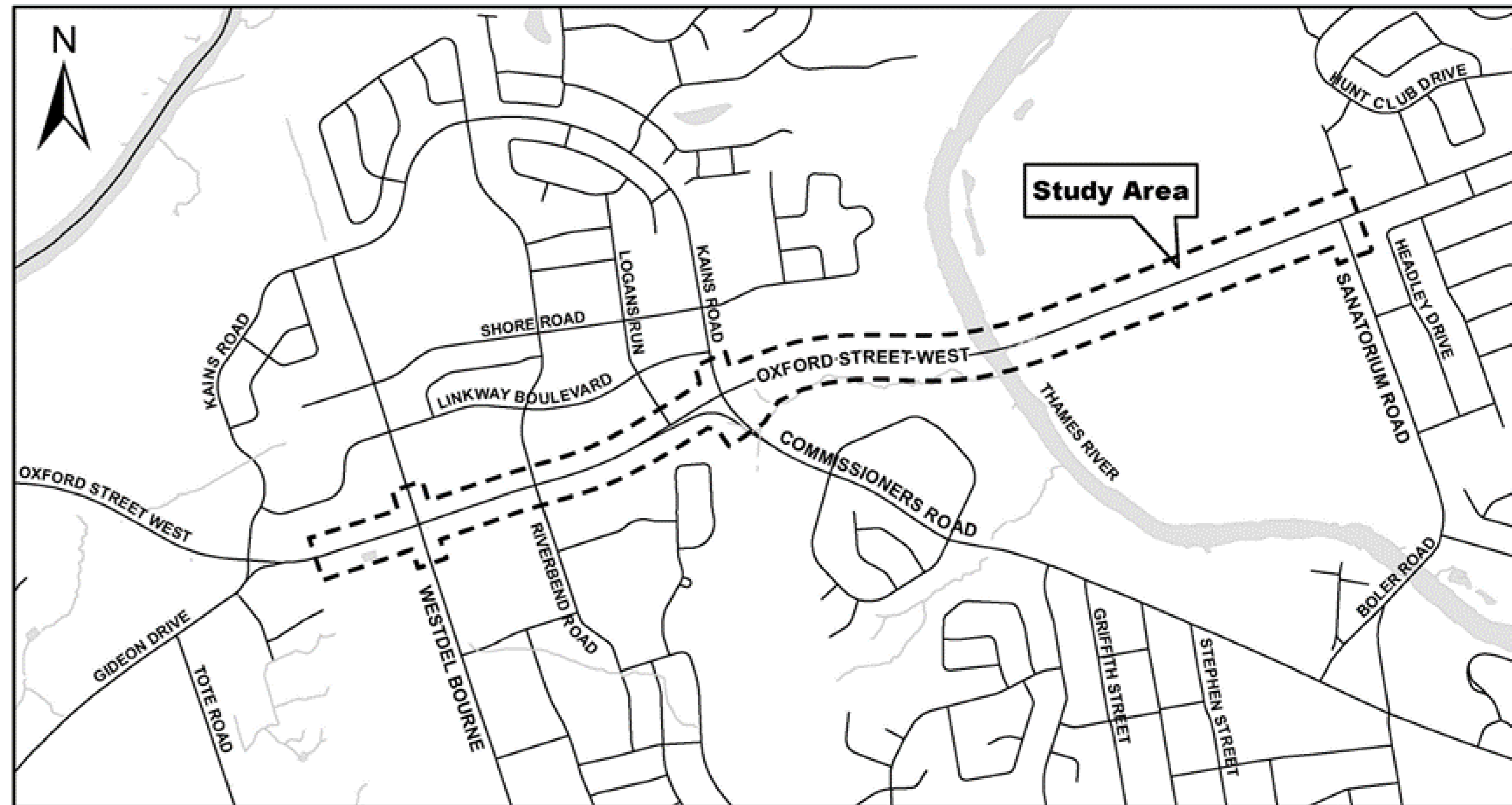
# What is This Study About?

## Study Objectives

The City of London (the City) is undertaking a Municipal Class Environmental Assessment (Class EA) to identify improvements to Oxford Street West to accommodate future growth over the next 25 years.

Improvements being explored as part of this study include:

- Roadway capacity needs
- Intersection operations
- Pedestrian and cyclist facilities
- Accessibility needs
- Roadway drainage and stormwater management

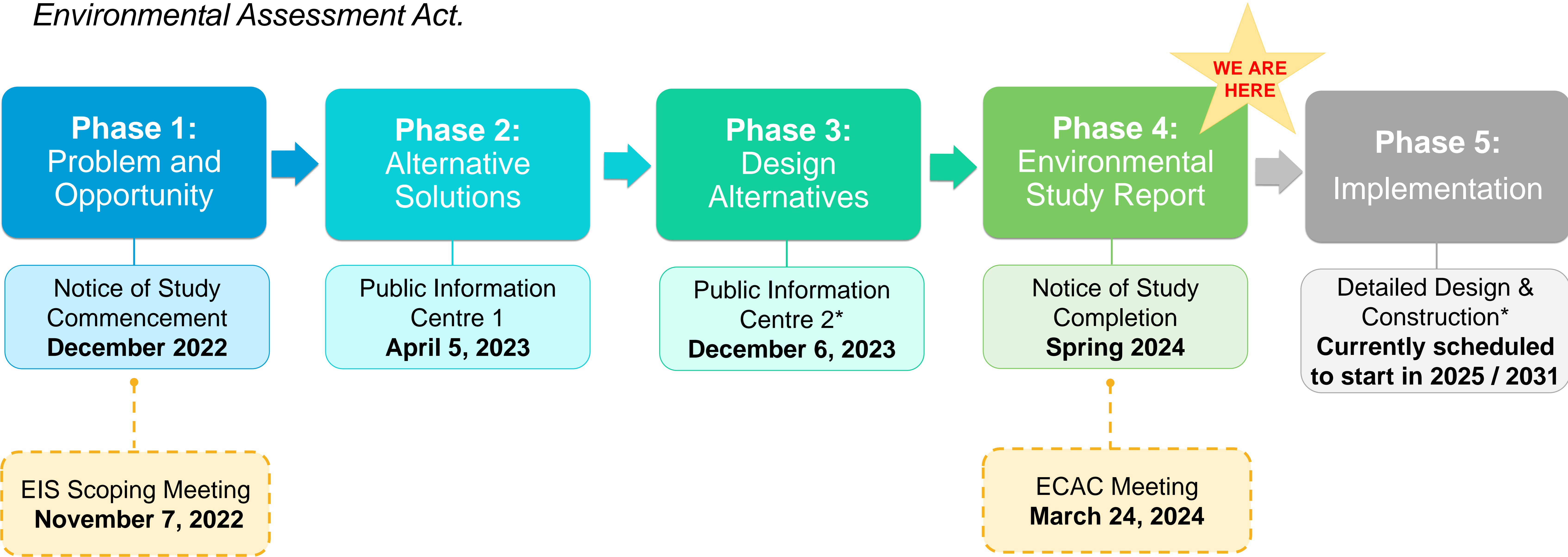


The study area is Oxford Street West from Westdel Bourne to Sanatorium Road



# Class EA Process & Study Schedule

This study is being carried out in accordance with Schedule C of the *Municipal Class Environmental Assessment (MCEA)*, (October 2000, as amended 2023), which is an approved process under the *Ontario Environmental Assessment Act*.



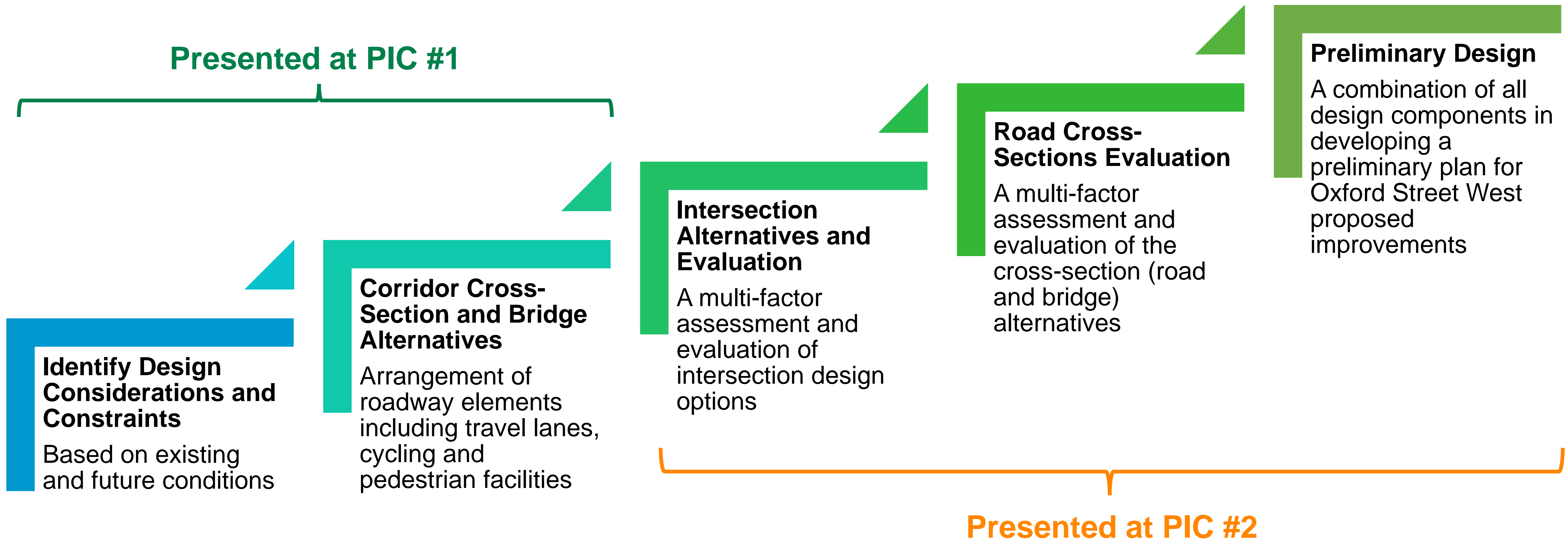
\*Timing to be reviewed as part of the EA. Subject to Council approval and funding.





# Design Process

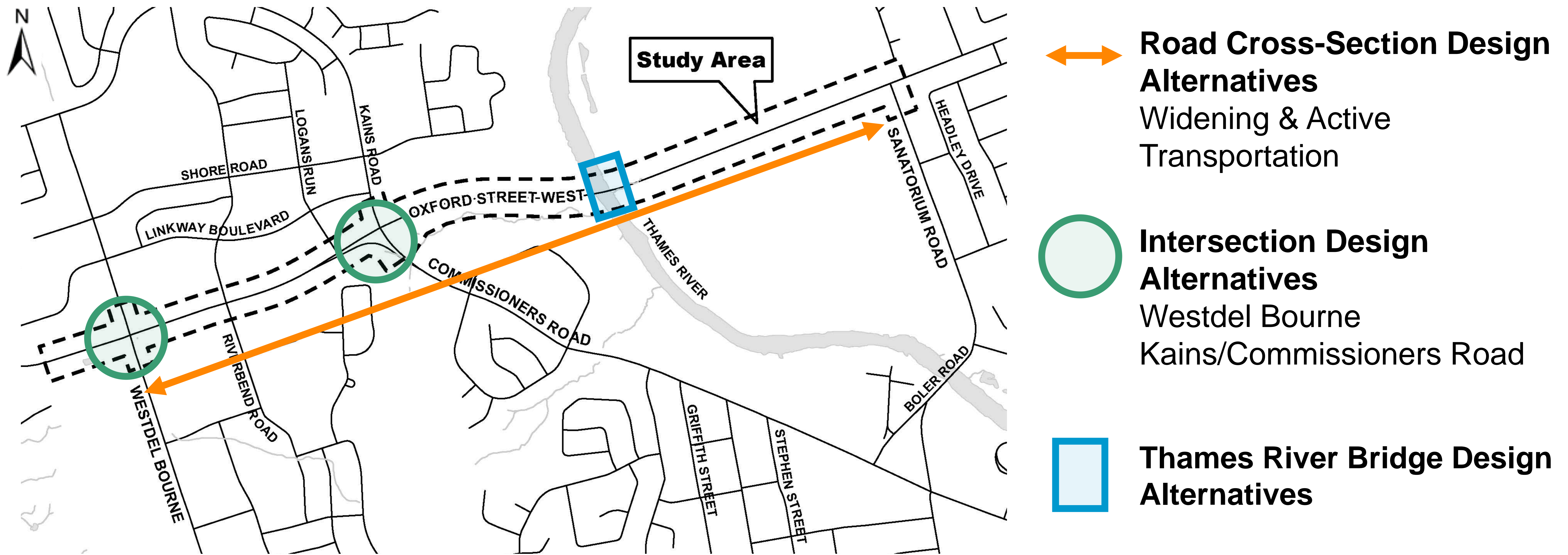
The design process consists of a number of decision points for different components of the roadway. As the design progresses and our knowledge of conditions and constraints evolved, there were several design iterations and refinements.





# Roadway Components

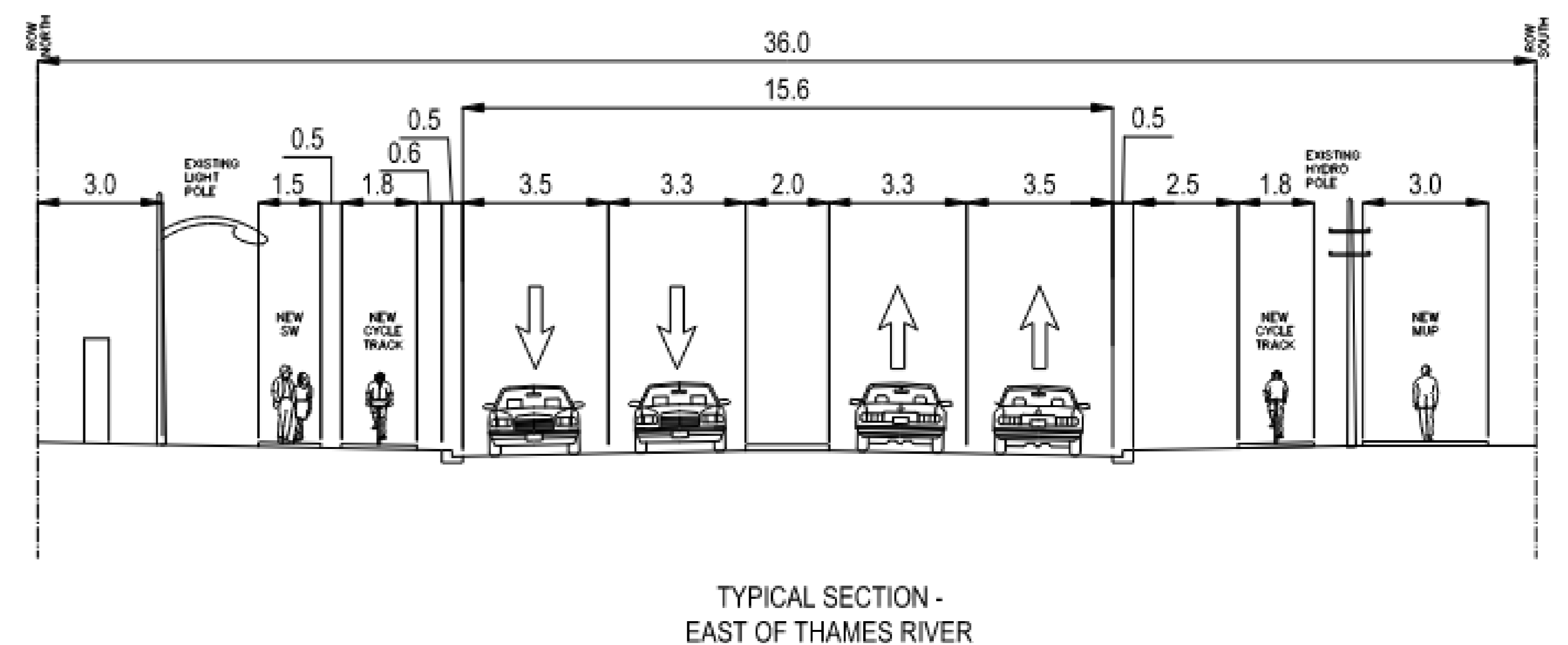
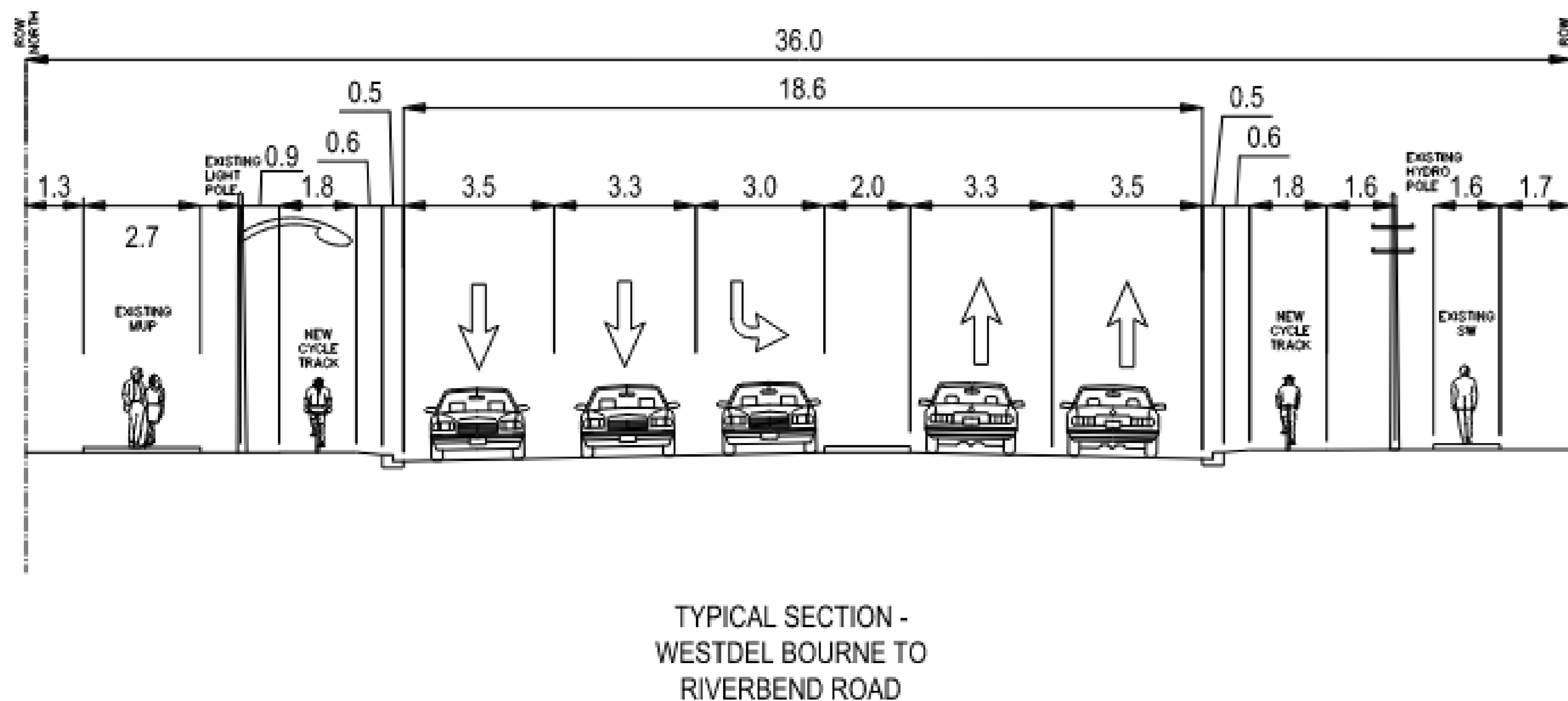
There are several components that form the overall design for Oxford Street West. Design alternatives were developed and assessed considering a wide range of factors under transportation planning, technical, and environmental (socio-economic, cultural, natural).





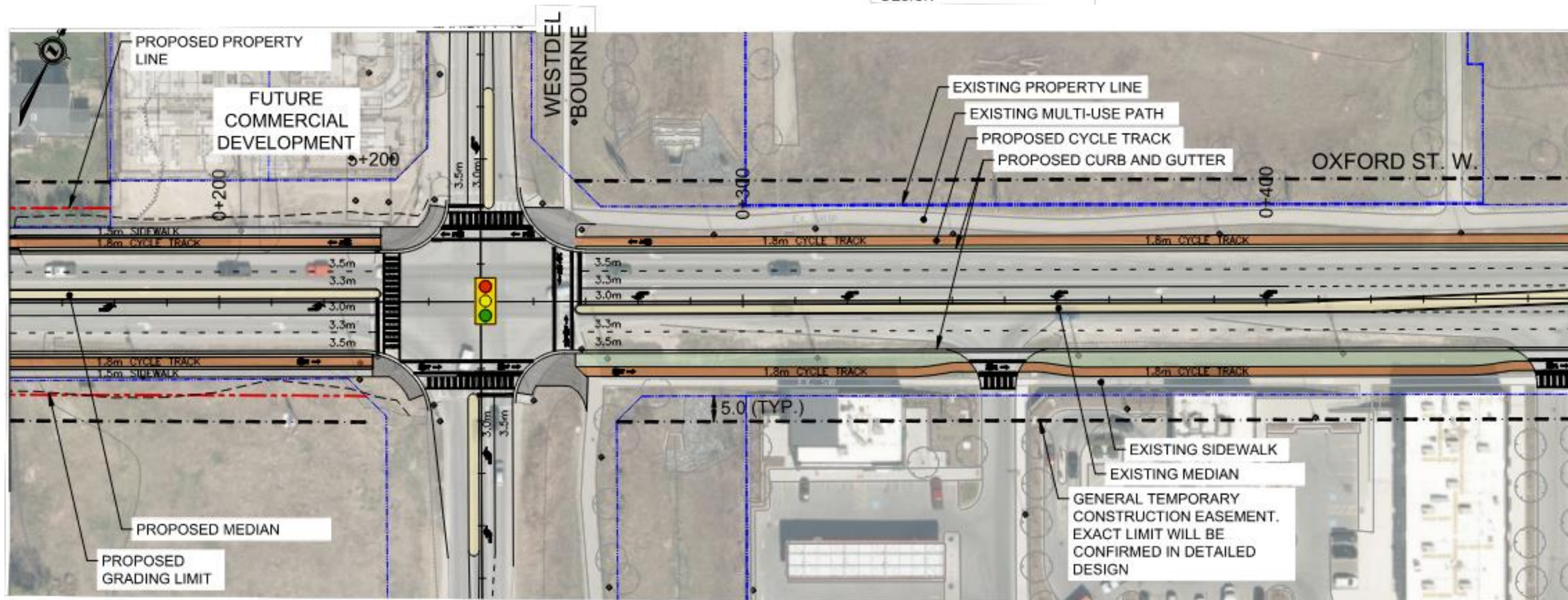
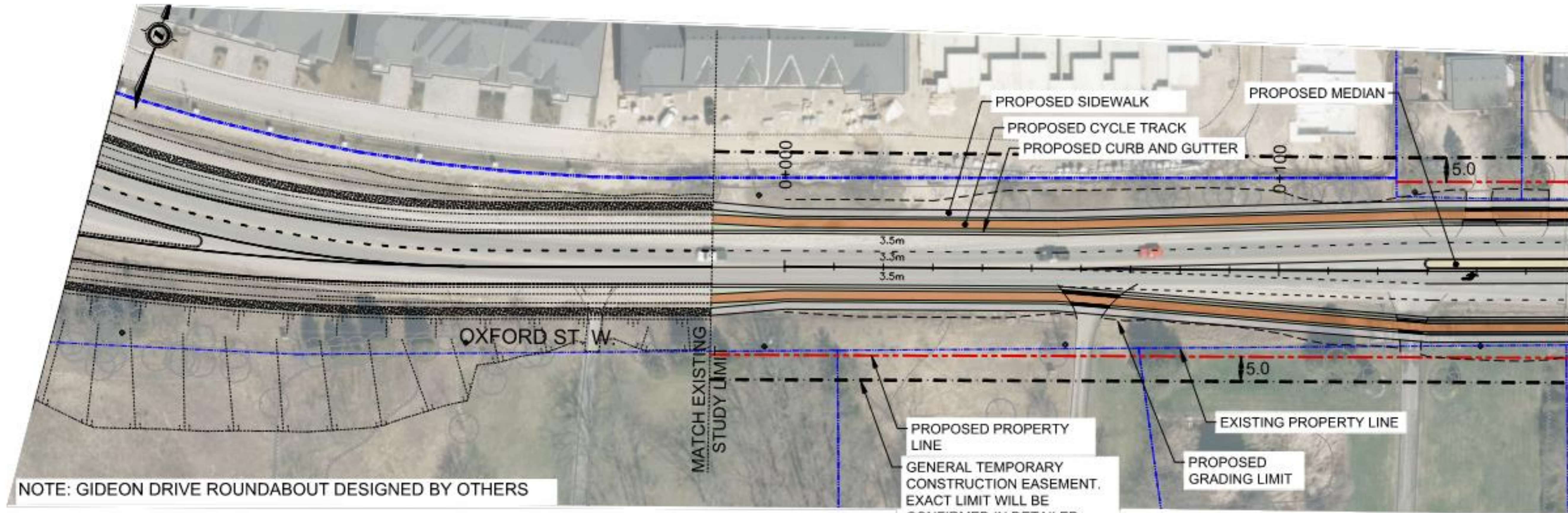
# Recommended Plan

- The Recommended Plan includes:
  - Construction of cycle tracks, sidewalks and multi-use paths throughout the corridor
  - Widening Oxford Street West to 4-lanes
  - Reconstruction of all intersections accommodate widening, turn lanes, active transportation facilities (multi-use path, cycle track, sidewalk)
  - Reconstruction of all accesses
  - Construction of cantilever structure on north side of Thames River Bridge to provide a multi-use path



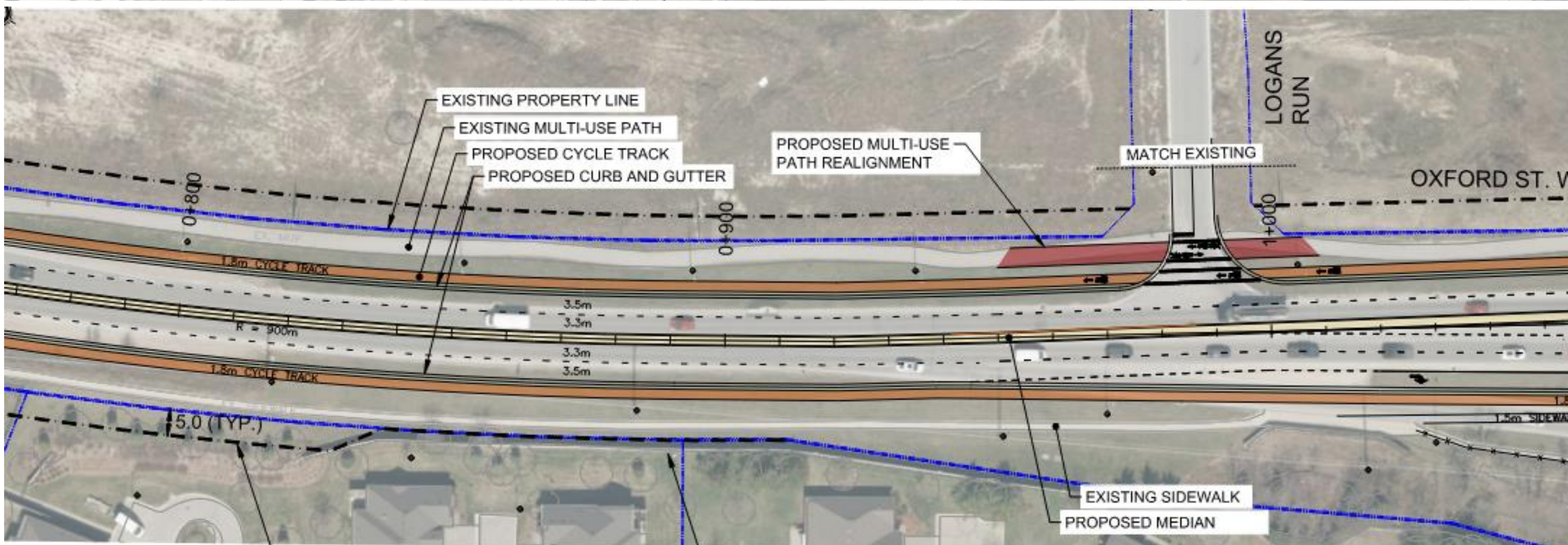
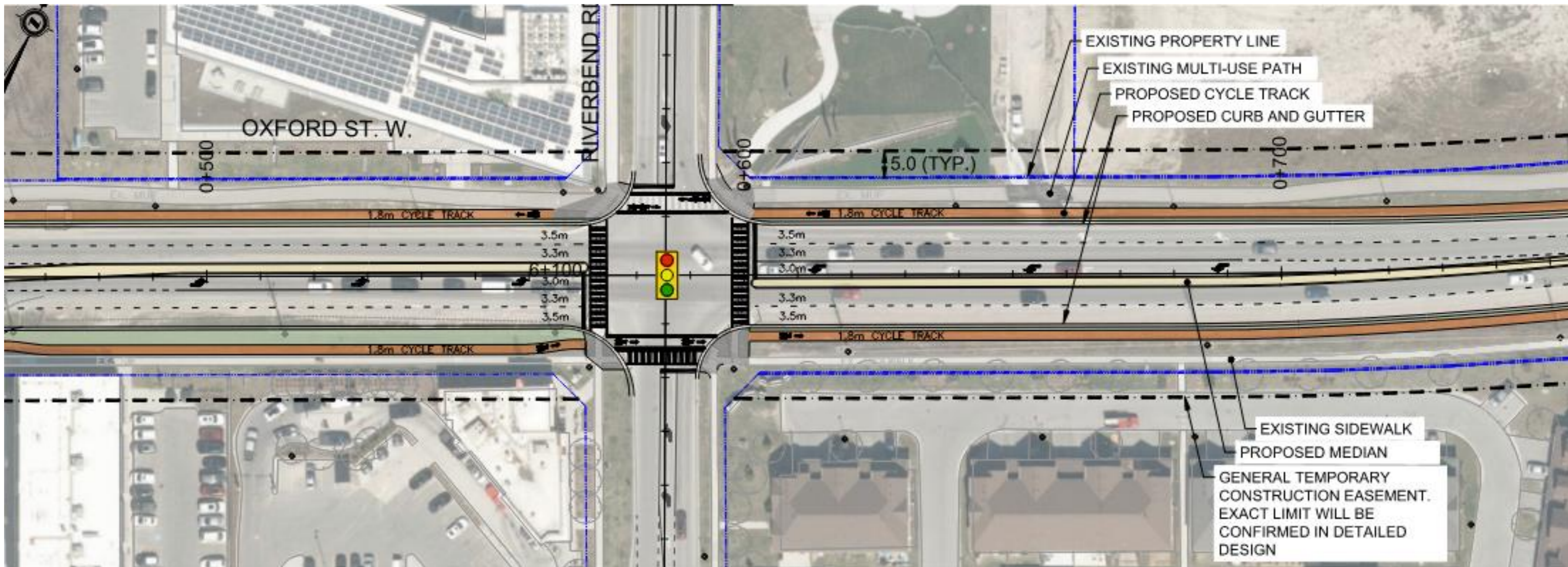


# Recommended Plan – Study Limit to Westdel Bourne





# Recommended Plan – Riverbend Road to Logans Run

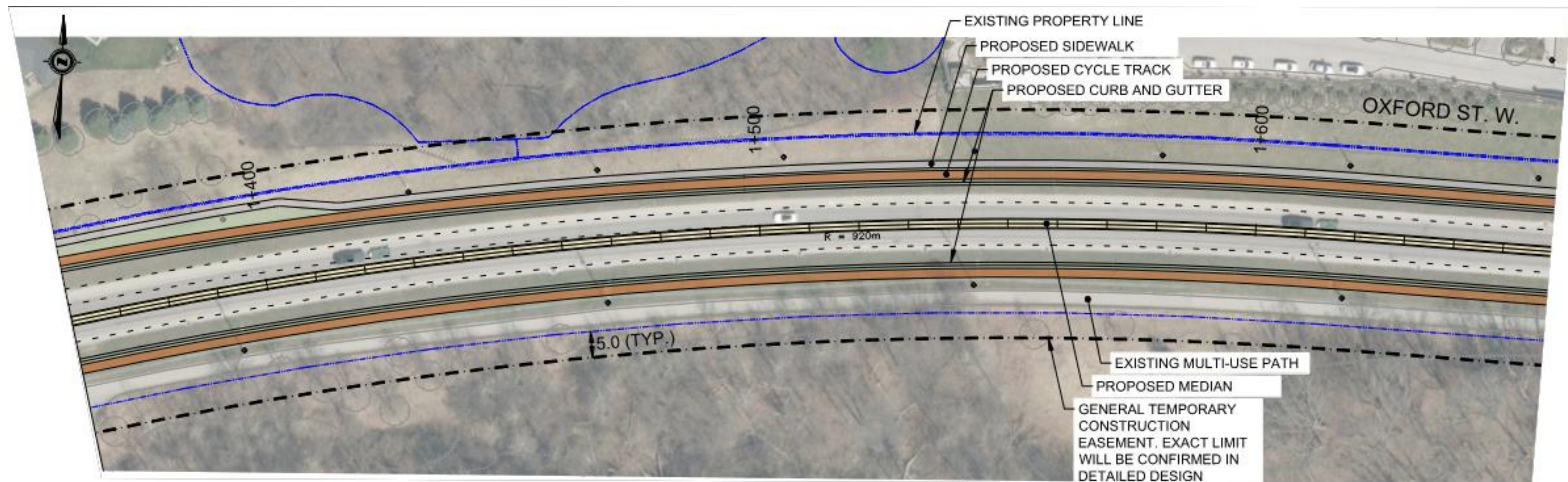
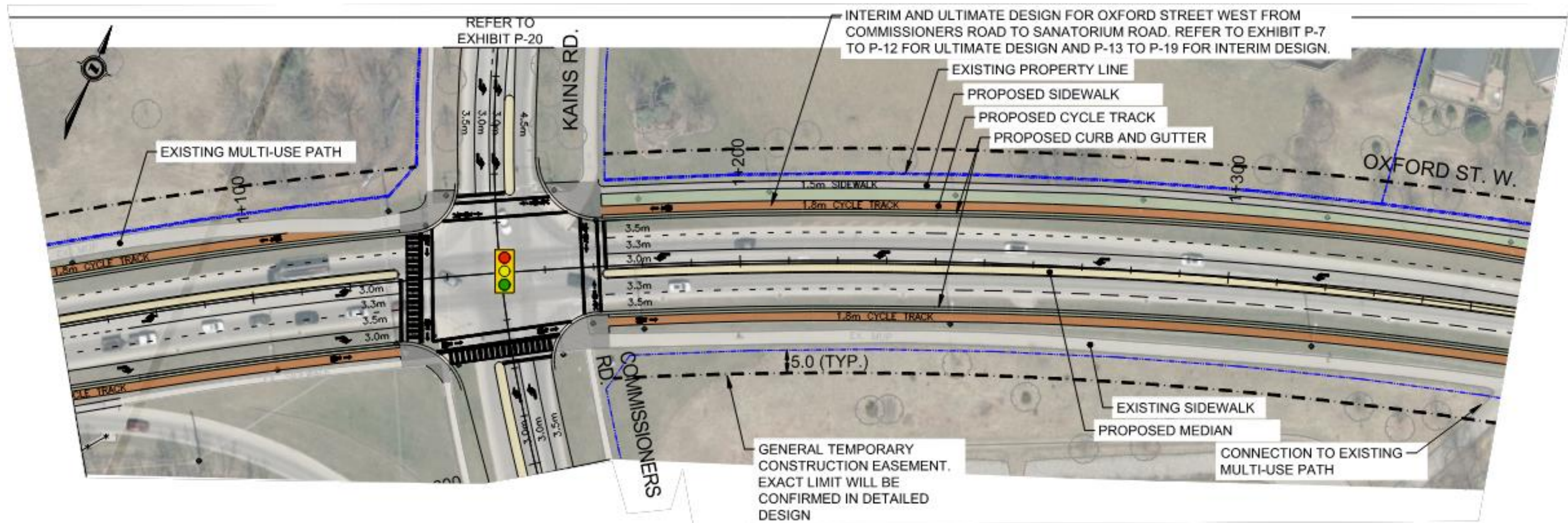


GENERAL TEMPORARY CONSTRUCTION EASEMENT. EXACT LIMIT WILL BE CONFIRMED IN DETAILED DESIGN

EXISTING NOISE WALL

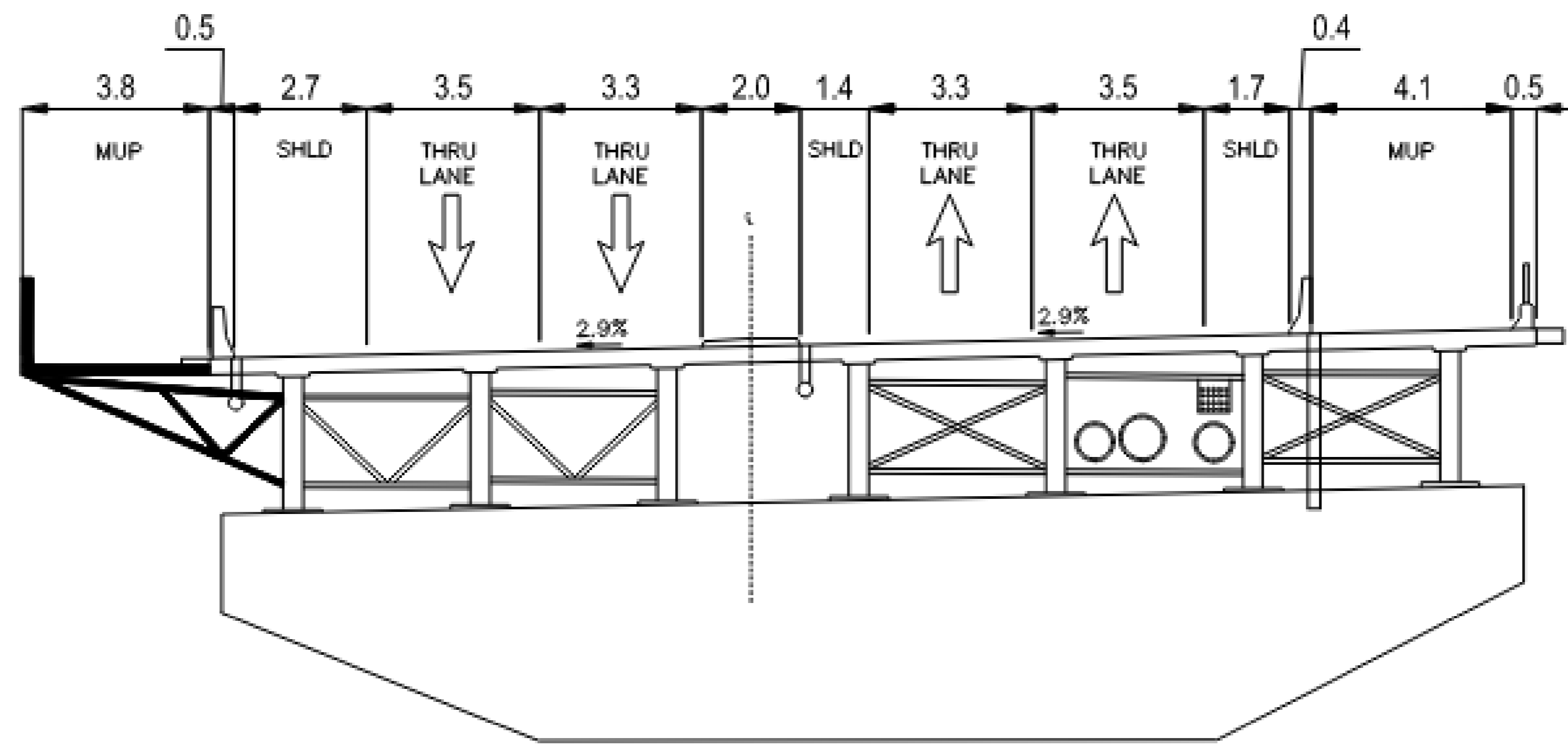
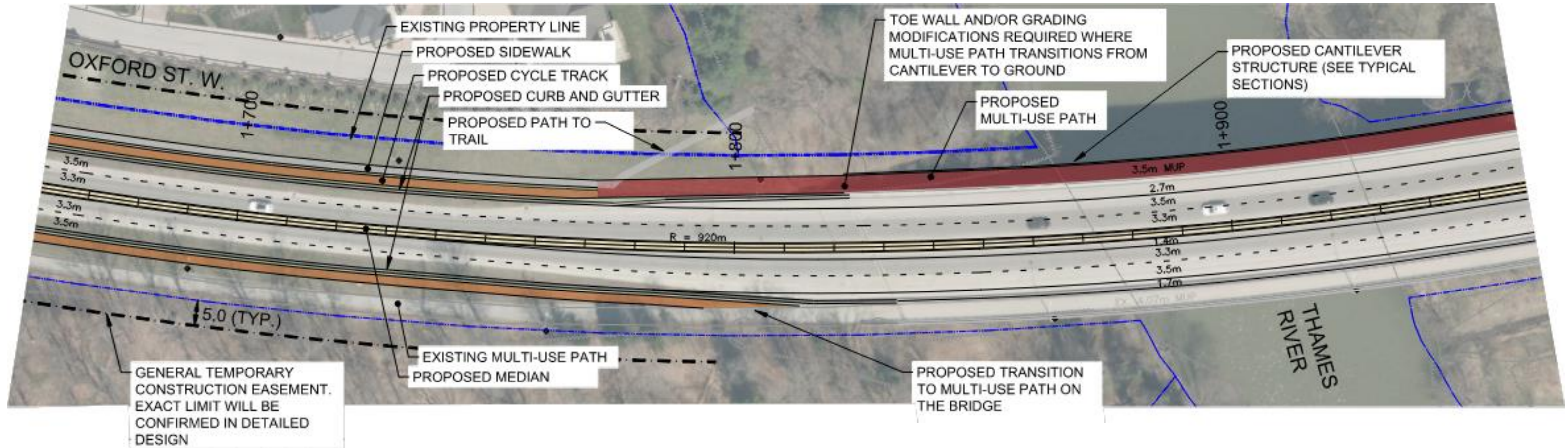


# Recommended Plan – Kains/Commissioners Road





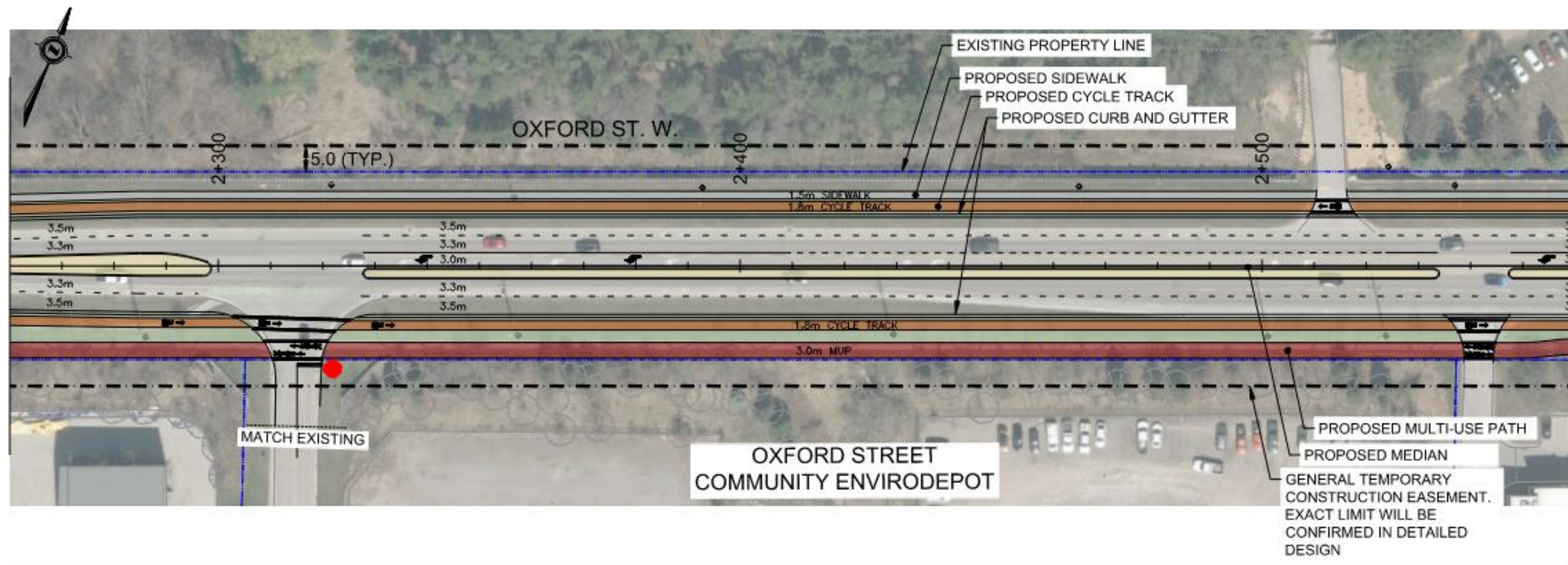
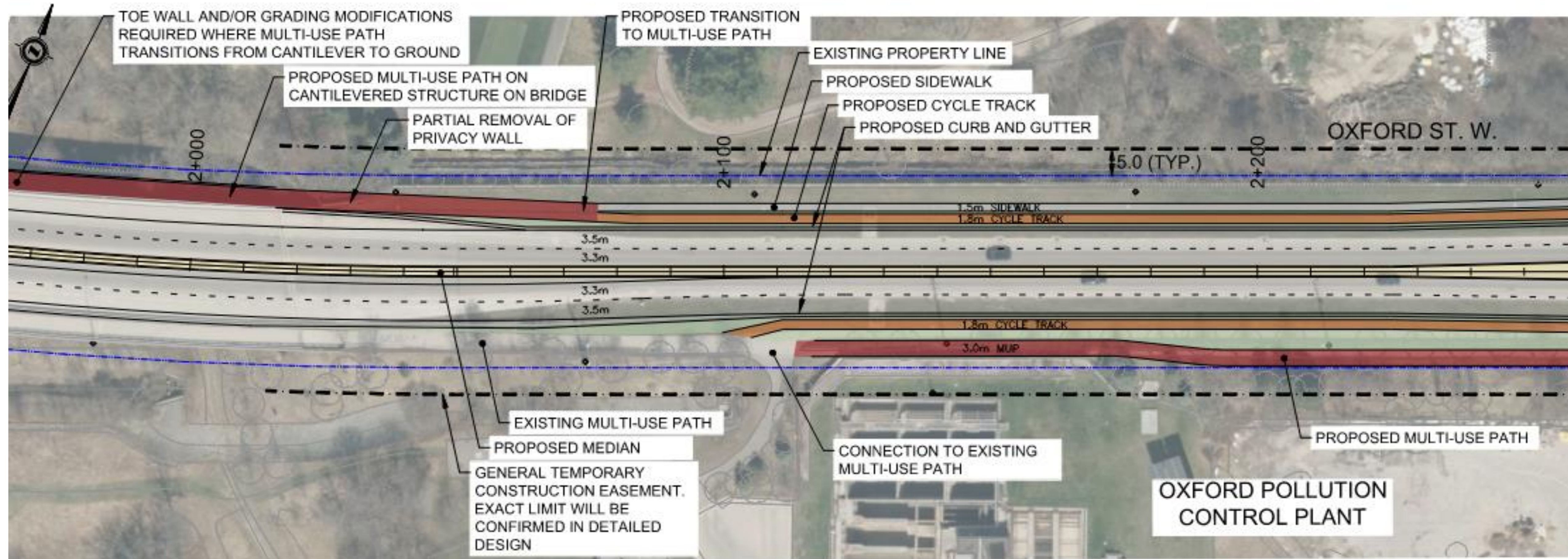
# Recommended Plan – Thames River Bridge



TYPICAL SECTION -  
 THAMES RIVER BRIDGE  
 ULTIMATE CONFIGURATION

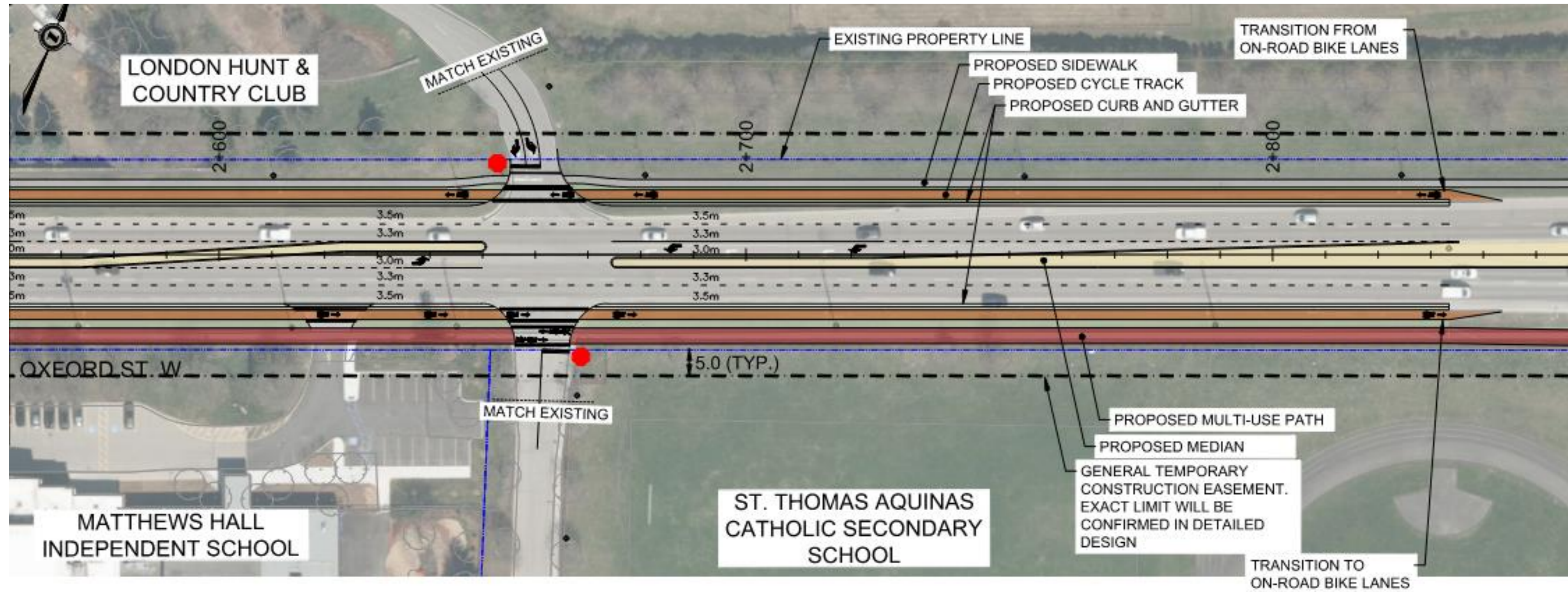


# Recommended Plan – East of Thames River





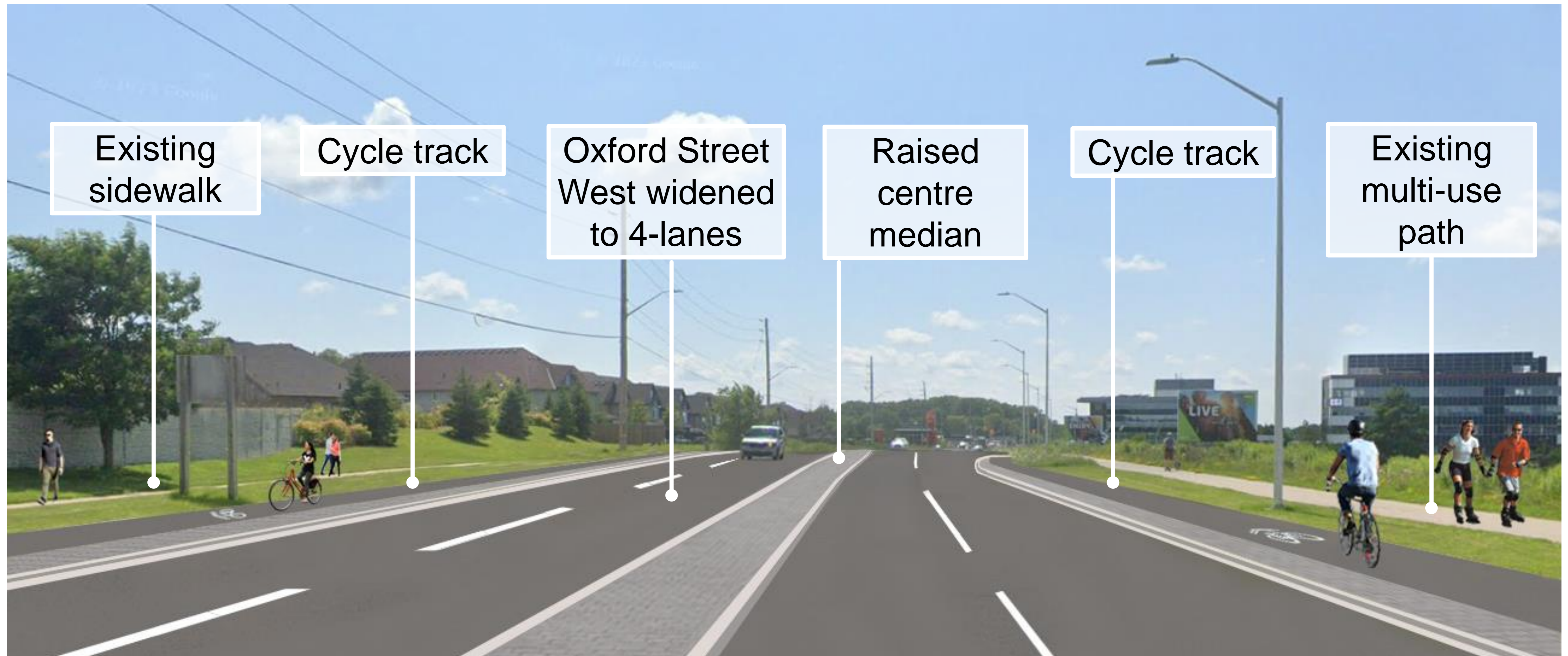
# Recommended Plan – Sanatorium Road





# What Could Oxford Street West Look Like?

## Oxford Street West (Mid-Block Looking West)

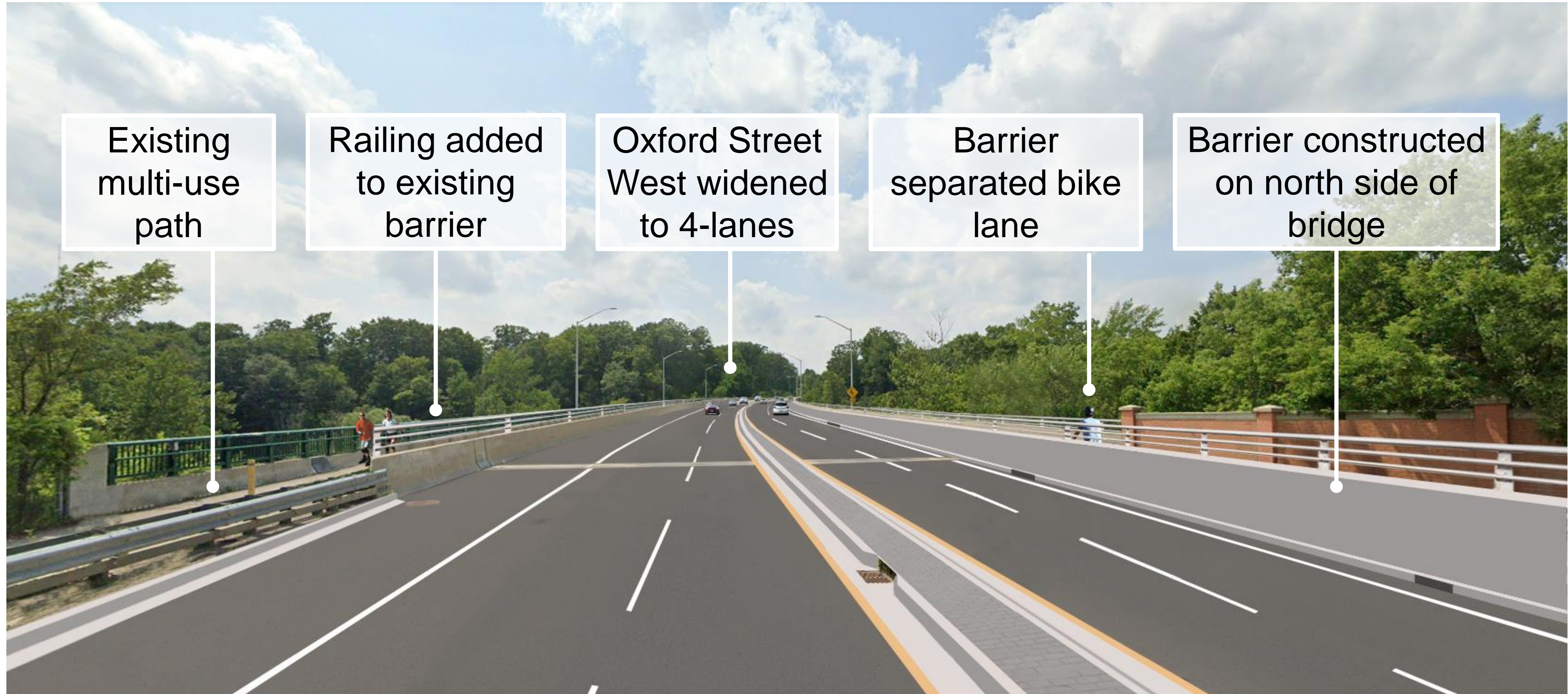


Conceptual only. Details associated with the design elements (e.g., materials, color, etc.) will be confirmed in detailed design and will adhere to the current standard at that time.



# What Could Oxford Street West Look Like?

## Interim Solution at Thames River Bridge (Looking West)

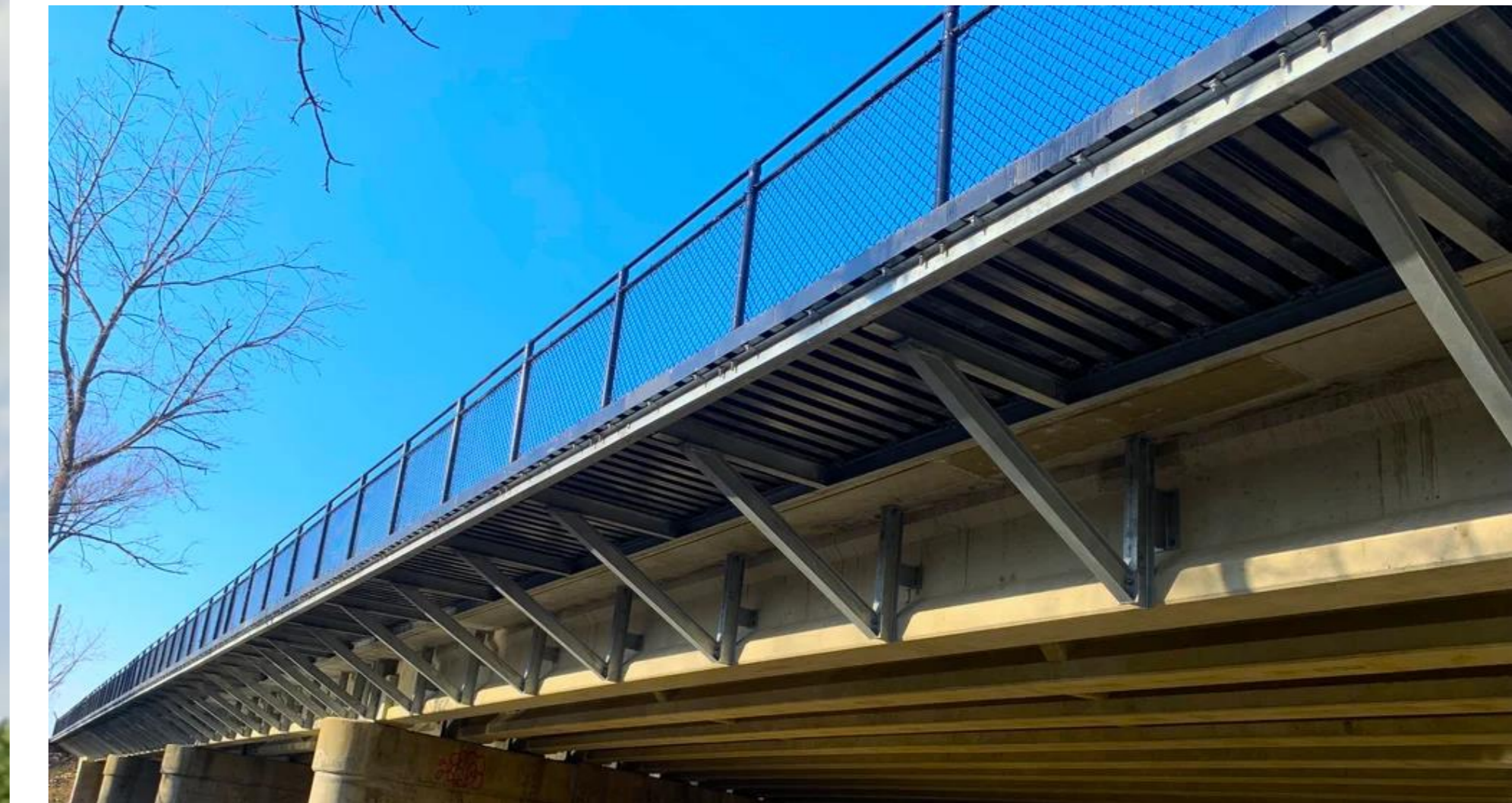
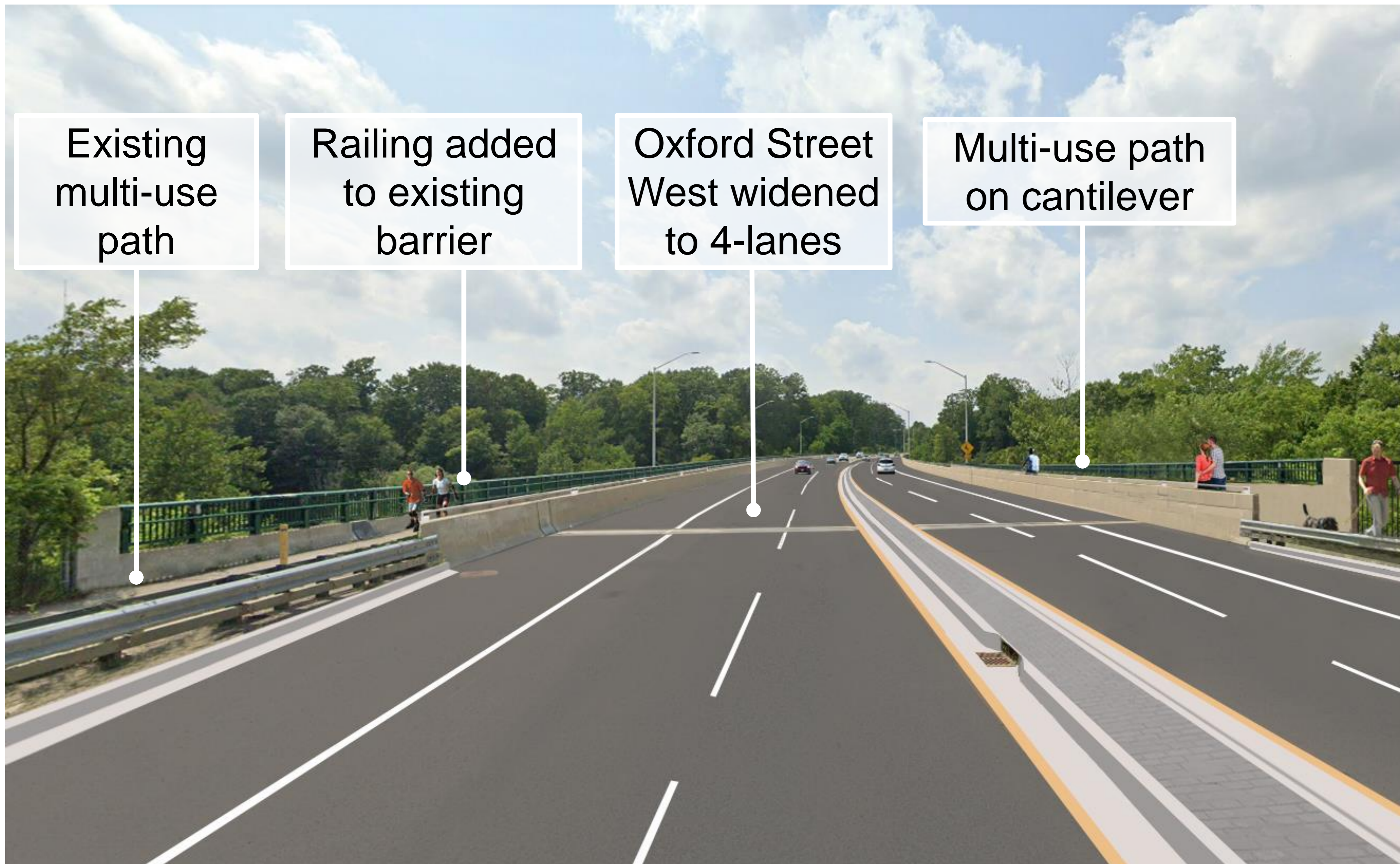


Conceptual only. Details associated with the design elements (e.g., materials, color, railings, etc.) will be confirmed in detailed design and will adhere to the current standard at that time.



# What Could Oxford Street West Look Like?

## Ultimate Solution at Thames River Bridge (Looking West)



Example Cantilever

Conceptual only. Details associated with the design elements (e.g., materials, color, railings, etc.) will be confirmed in detailed design and will adhere to the current standard at that time.



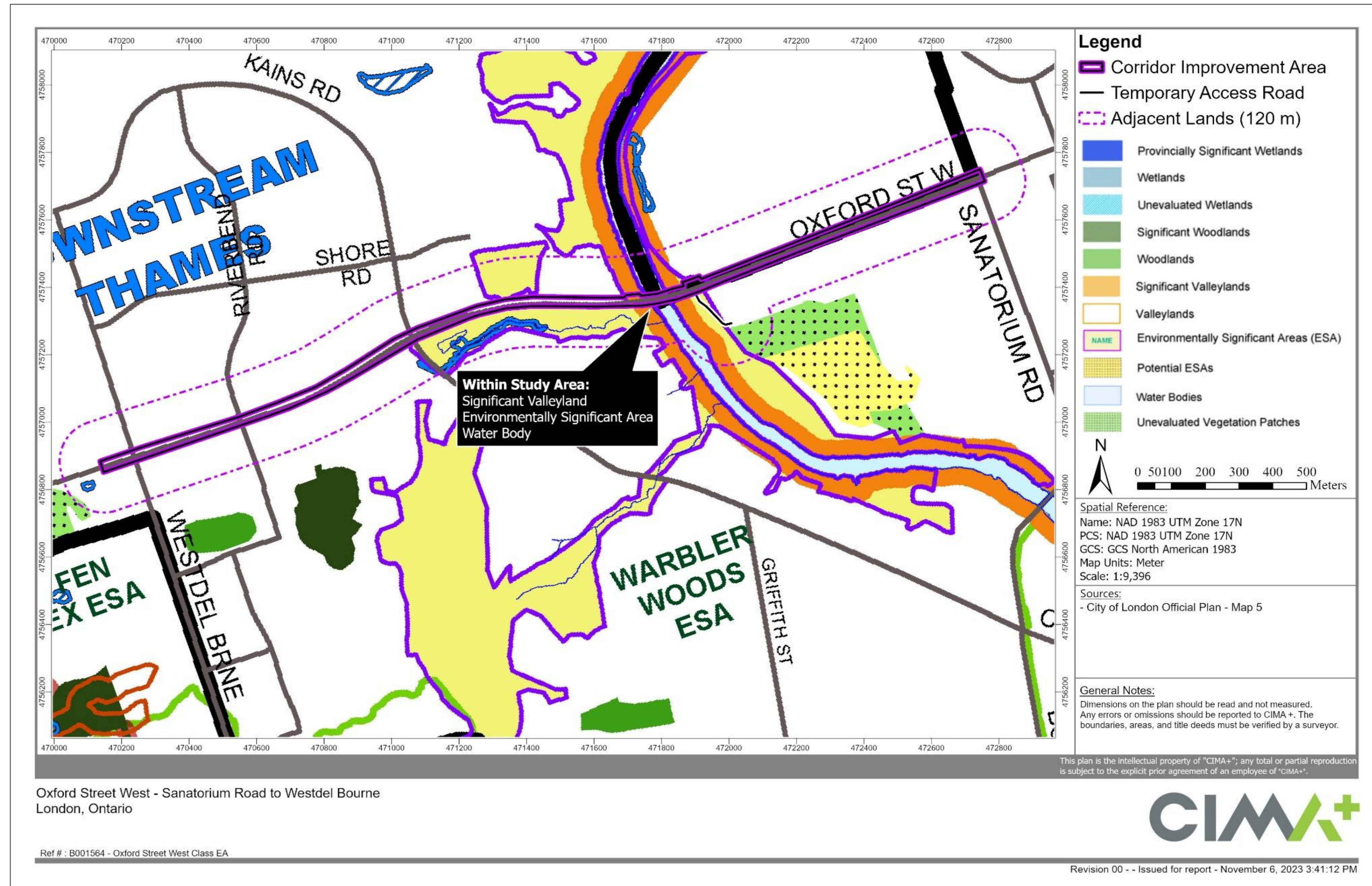
# Natural Heritage - Background

## Environmental Impact Study (EIS) Scoping Meeting

- Meeting held November 7, 2022
- Attendees: City of London, Upper Thames River Conservation Authority, Ecological Community Advisory Committee, CIMA+
- General approach:
  - Assume all natural areas to be high value especially the Thames River
  - Avoid / Minimize in-water work or work in the valley

## Background review identified the following:

- Significant Valleylands
- Environmentally Significant Area (ESA)
- Unevaluated Vegetation Patches
- Thames River
- Potential for other aquatic features (i.e., tributaries)
- Species at Risk
- 42 potential SAR listed in the various sources



## City of London Official Plan Map 5 – Natural Heritage (2023)



## Field Investigations

The following field investigations were completed in 2023 as part of the Oxford Street West EA:

- Assessment and description of **fish habitat**
- Characterizing **vegetation communities**
- Tree and Botanical Inventories, including Species at Risk (SAR)
- Screening for **significant wildlife habitat** and the **presence of SAR** or **SAR habitat**
- Identifying and assessing **significant woodlands**

## Results

- **Fish Habitat**
  - **Confirmed:** Thames River, two (2) tributaries at the bridge
  - **Assumed:** Tributary to Thames River, Tributary near Westdel Bourne
- **Candidate Significant Wildlife Habitat** (e.g. turtle wintering area, waterfowl stopover)
- **Confirmed or Potential Endangered or Threatened Species (and their Habitat):**
  - Mussels
  - Fish
  - Herpetofauna
  - Birds
  - Bats
- **Significant Woodlands:** Two stands confirmed to meet City of London Guidelines
- **Significant Valleyland:** Thames River Valley, identified on the Official Plan



# Natural Heritage - Results



Oxford Street West - Sanatorium Road to Westdel Bourne  
London, Ontario

Ref #: B001564 - Oxford Street West Class EA

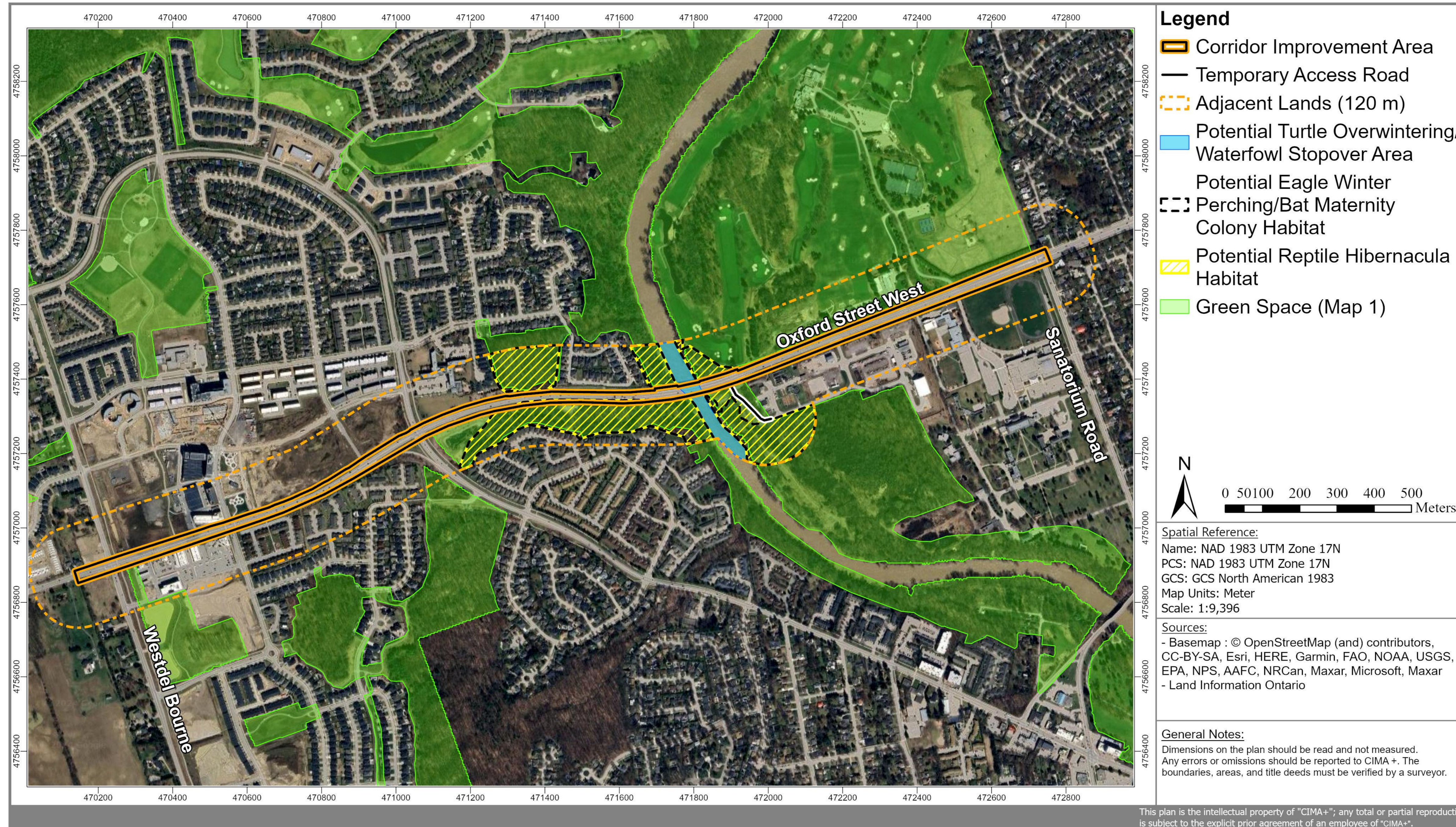


Revision 00 - Issued for report - Wednesday, March 6, 2024 12:00:28 PM

## Terrestrial



# Natural Heritage - Results



Oxford Street West - Sanatorium Road to Westdel Bourne  
 London, Ontario

Ref # : B001564 - Oxford Street West Class EA

Revision 00 - - Issued for report - Wednesday, March 6, 2024 12:10:25 PM



## Significant Wildlife Habitat



# Natural Heritage - Results



Oxford Street West - Sanatorium Road to Westdel Bourne  
 London, Ontario

Ref # : B001564 - Oxford Street West Class EA



Revision 00 -- Issued for report - Friday, November 3, 2023 3:02:24 PM

## Aquatic





# Natural Heritage – Summary of Impacts

- Most of the proposed work on Oxford Street West will be within the existing right-of-way
- It is anticipated that some of the vegetation will be impacted on the north side of the Thames River Bridge
- Thames River and four aquatic features
  - No in-water work
- Valleyland
  - Minimized to small amount of vegetation clearing
  - No impacts to slopes





# Natural Heritage – Commitments to Future Work and Mitigation Measures

## Consultations and Permitting

- Consultation with Ministry of Environment, Conservation and Park (all species) and Fisheries and Oceans Canada (fish and mussels) on Endangered and Threatened species required at final design.

## Additional Surveys During Detailed Design

- Review applicable legislations to confirm scope of surveys.

## Planning and General Measures

- Minimize the clearing of vegetation and disturbances to soil.
- Implement avoidance and mitigation measures for species at risk (i.e., timing windows, exclusion fencing, avoid protected habitats).
- Ensure that erosion and sediment control measures are designed to protect all aquatic features, and Valleylands.
- Minimize harm to all fauna through best management practices (i.e., application of timing windows, minimize sensory disturbances)
- Develop contractor awareness training.
- Implement measures to minimize the spread of invasive plants.
- Avoidance of alterations to drainage patterns, or changes to the water quantities/qualities reaching aquatic habitats and follow appropriate Code of Practices issued by Fisheries and Oceans Canada.



## Next Steps...

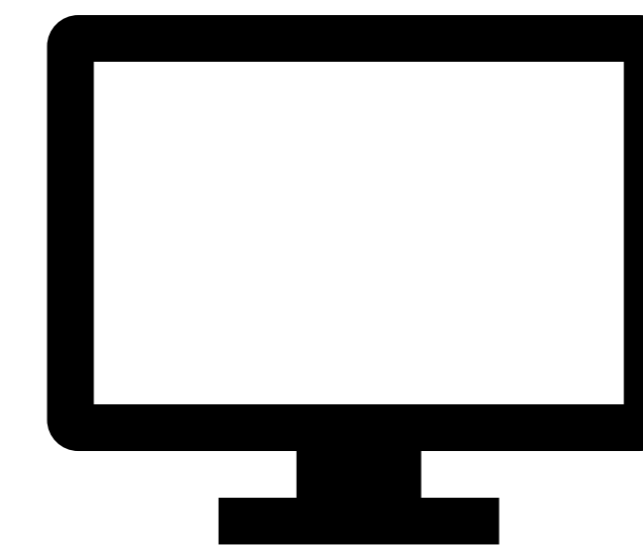
- Finalize Environmental Study Report (to document the study findings)
- Circulate the Environmental Study Report to agencies for review (MCEP & UTRCA)
- Present study to Council
- Pending Council endorsement, issue Notice of Study Completion to initiate a 30-day public review period for the Environmental Study Report

## How to Stay In Touch



**Contact City Project Manager,  
Erik Guil**

Reach out by email at  
[eguil@london.ca](mailto:eguil@london.ca)



**Review Study Materials at**  
[https://getinvolved.london.ca/  
oxfordwest](https://getinvolved.london.ca/oxfordwest)