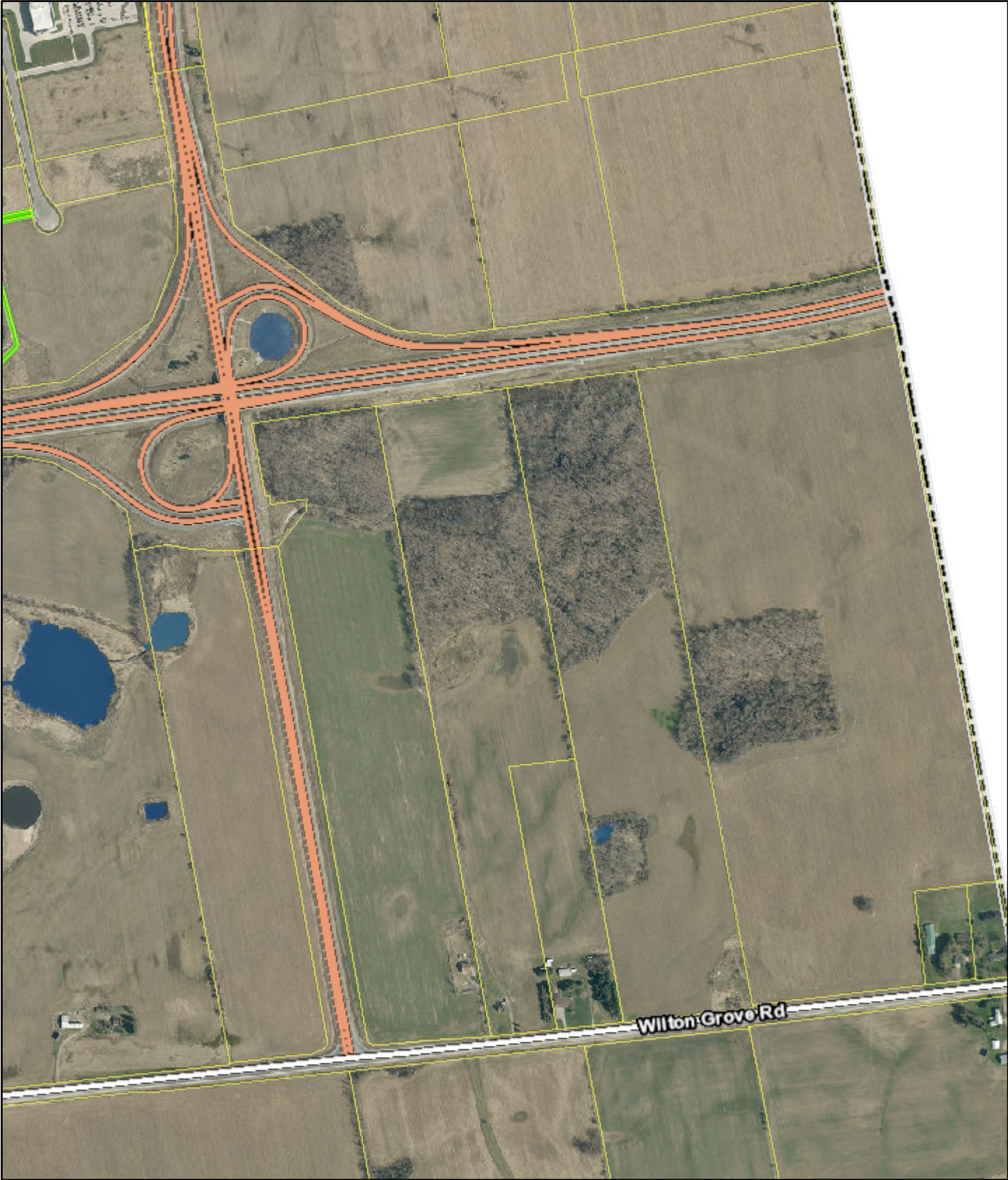
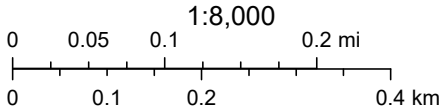


London City Map



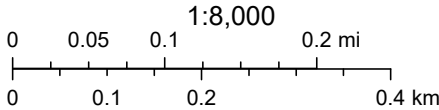
2024-02-09, 12:59:45 p.m.

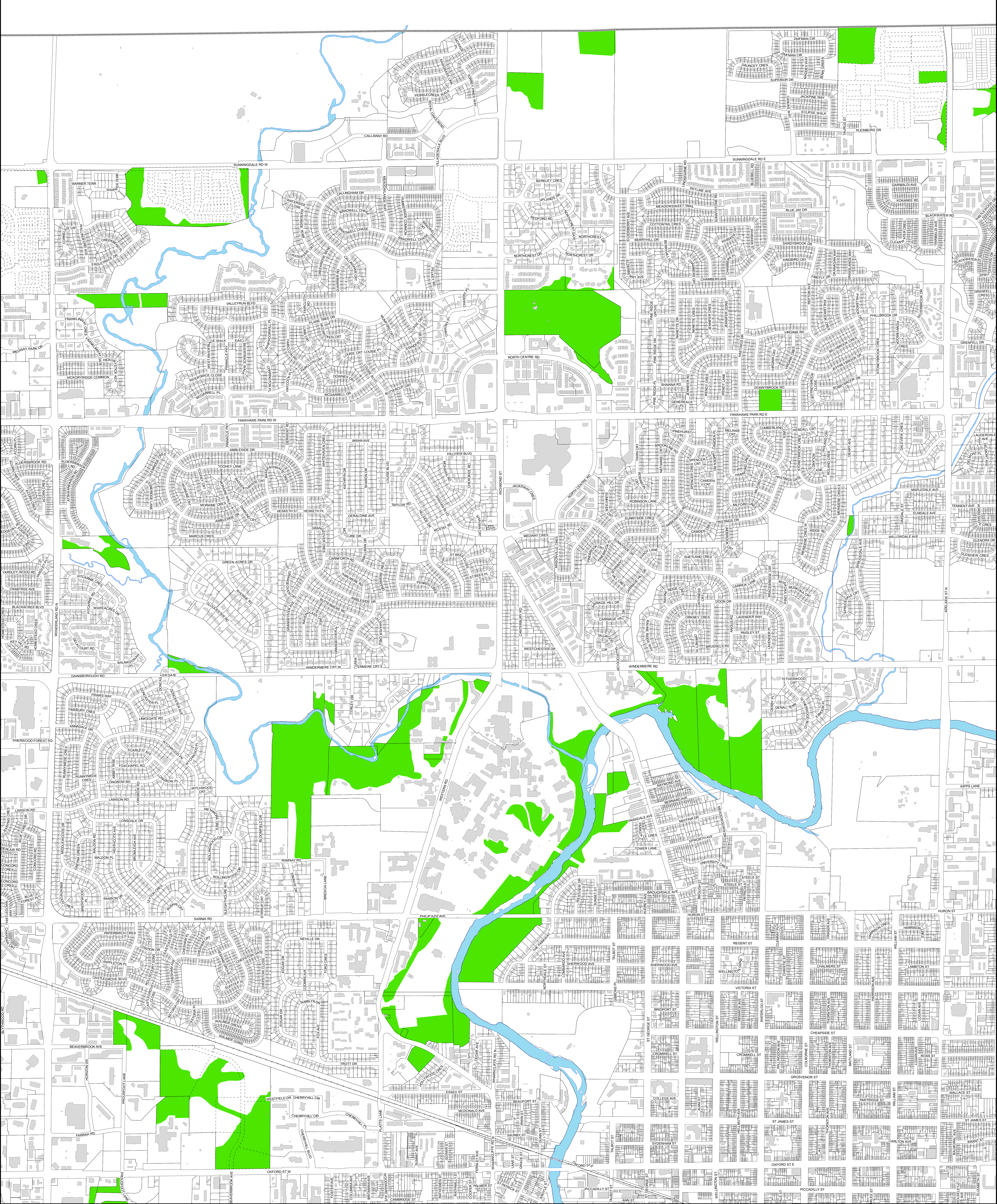


London City Map



2024-02-09, 12:57:23 p.m.

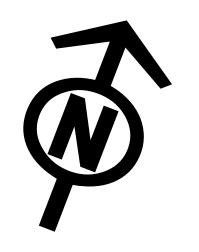
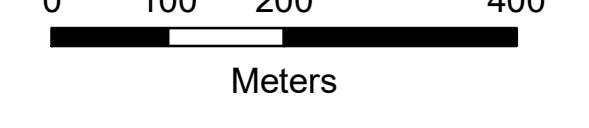




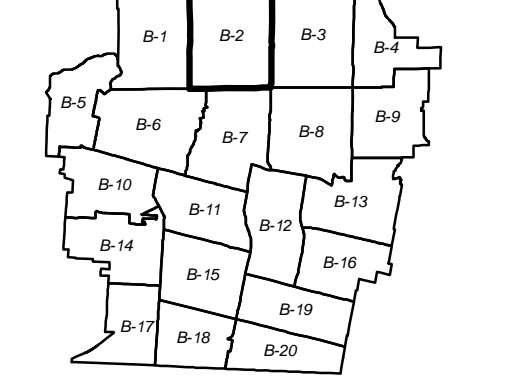
 Tree Protection Area

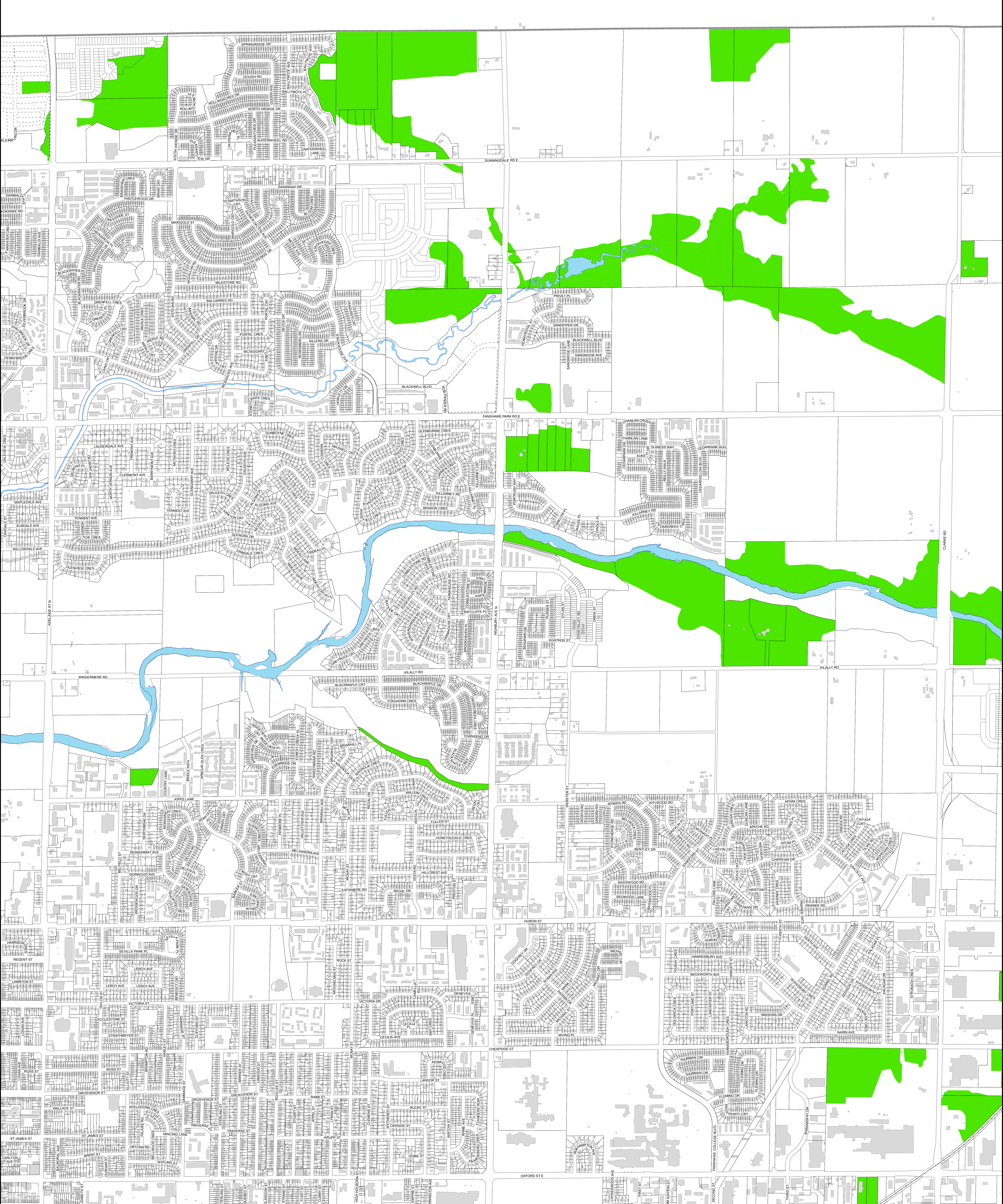
KEY MAP
B-2

1:6,500



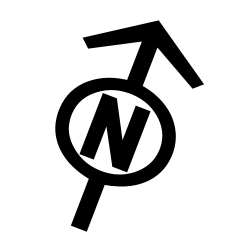
DISCLAIMER:
 The City of London Tree Protection By-Law Maps and related information are made available for information only. The City of London does not warrant that this information is the most current version or that there are no errors or omissions contained herein. The City of London accepts no responsibility for damages, if any, suffered by any person as a result of decisions made or actions based on this information and any person undertaking work based on this information assumes all risk in connection therewith and any damages done or occasioned shall be at the sole risk and expense of that person. Any person undertaking work should verify it with the City's Planning Services before acting on it. No permission is given for distribution of the Tree Protection By-Law maps or related information for commercial purposes. This information may be used for other purposes only if the user of this information repeats this disclaimer and the notice of copyright.





 Tree Protection Area

KEY MAP
B-3
 1:6,500
 0 100 200 400
 Meters



DISCLAIMER:
 The City of London Tree Protection By-Law Maps and related information are made available for information only. The City of London does not warrant that this information is the most current version or that there are no errors or omissions contained herein. The City of London accepts no responsibility for damages, if any, suffered by any person as a result of decisions made or actions based on this information and any person undertaking work based on this information assumes all risk in connection therewith and any damages done or occasioned shall be at the sole risk and expense of that person. Any person undertaking work based on this information should verify it with the City's Planning Services before acting on it. No permission is given for distribution of the Tree Protection By-Law maps or related information for commercial purposes. This information may be used for other purposes only if the user of this information repeats this disclaimer and the notice of copyright.
 COPYRIGHT 2020

